



## URA RESOLUTION 2008-026

### **A RESOLUTION APPROVING A FAÇADE GRANT FOR SCOTT EMMETT, OWNER OF THE BUILDING HOUSING SHERWOOD OLD TOWN DENTAL**

**WHEREAS**, the Urban Renewal District created the Façade Grant Program by URA Resolution 2003-001 in January 2003 and adopted amendments to the program in May 2004; and

**WHEREAS**, Scott Emmett, building owner, representing the building housing Sherwood Old Town Dental, has submitted an application for a grant shown as Exhibit A to this document; and

**WHEREAS**, the Sherwood Urban Renewal Planning Advisory Commission (SURPAC) concurs with the application and recommended approval.

**NOW, THEREFORE, THE URBAN RENEWAL AGENCY BOARD OF DIRECTORS RESOLVES AS FOLLOWS:**

The District Administrator is authorized to grant \$15,000 in accordance to the terms and conditions to the Façade Grant Program.

**Duly passed by the City of Sherwood Urban Renewal Agency Board of Directors this 7<sup>th</sup> day of October 2008.**

  
Keith S. Mays, Board Chair

ATTEST:

  
Sylvia Murphy, District Recorder



### Old Town Facade Program Grant Application

Date of Application: 8-21-08 SURPAC Review Date: \_\_\_\_\_

#### Business Information

Sherwood Old Town Dental  
Name of Business

16043 SW Railroad St, Sherwood, OR 97140  
Physical Business Address

\_\_\_\_\_  
Mailing Address (if different from physical address)

503-625-6221 503-625-5340 \_\_\_\_\_  
Business Phone Business Fax Web site

Debi Huyssoon, DMD  
Business Owner(s) Name(s)

16043 SW Railroad St 503-625-6221  
Address of Property to be Improved Phone

Scott Emmett 503-572-8606 scott@phairdevelopment.com  
Application being submitted by Phone E-mail

#### Project Information

Please describe scope of project. Attach quote, photos or other information as appropriate. (Please attach additional sheets as required). New main entrance with covered porch and covered bike parking. New roofing, new siding (Hardi), new vinyl windows, new paint.

It is understood that paint and roofing are not eligible for grant money just detailed here to illustrate the scope for this project.

*Full set of plans attached for review*

Est. Project Start Date: 9-8-08 Est. Project Completion Date: 11-9-08

#### Budget

Total Project Cost: \$ 43,200.00  
Dollar Amount Requested: \$ 15,000.00  
(Please see attached Guidelines)

#### Authorization

\_\_\_\_\_  
UR District Manager

\_\_\_\_\_  
District Board President

\_\_\_\_\_  
Date Awarded



**OUTLINE SPECIFICATIONS**

**SECTION 02 - EXTERIOR FINISHES**  
 02-01 - EXTERIOR PAINTS AND COATINGS  
 02-02 - EXTERIOR WALL FINISHES  
 02-03 - EXTERIOR ROOF FINISHES  
 02-04 - EXTERIOR FLOOR FINISHES  
 02-05 - EXTERIOR METAL FINISHES  
 02-06 - EXTERIOR GLASS FINISHES  
 02-07 - EXTERIOR STONE FINISHES  
 02-08 - EXTERIOR TILE FINISHES  
 02-09 - EXTERIOR CONCRETE FINISHES  
 02-10 - EXTERIOR BRICK FINISHES  
 02-11 - EXTERIOR BLOCK FINISHES  
 02-12 - EXTERIOR PLASTER FINISHES  
 02-13 - EXTERIOR GROUT FINISHES  
 02-14 - EXTERIOR SEALERS  
 02-15 - EXTERIOR PROTECTIVE COATINGS  
 02-16 - EXTERIOR CORROSION RESISTANT FINISHES  
 02-17 - EXTERIOR ANTI-CORROSION FINISHES  
 02-18 - EXTERIOR ANTI-GRAFFITI FINISHES  
 02-19 - EXTERIOR ANTI-VANDALISM FINISHES  
 02-20 - EXTERIOR ANTI-THEFT FINISHES  
 02-21 - EXTERIOR ANTI-FIRE FINISHES  
 02-22 - EXTERIOR ANTI-UV FINISHES  
 02-23 - EXTERIOR ANTI-POLLUTION FINISHES  
 02-24 - EXTERIOR ANTI-WEAR FINISHES  
 02-25 - EXTERIOR ANTI-SCUFF FINISHES  
 02-26 - EXTERIOR ANTI-IMPACT FINISHES  
 02-27 - EXTERIOR ANTI-GLASS FINISHES  
 02-28 - EXTERIOR ANTI-SHOCK FINISHES  
 02-29 - EXTERIOR ANTI-CRACK FINISHES  
 02-30 - EXTERIOR ANTI-SPALL FINISHES  
 02-31 - EXTERIOR ANTI-CHIPPAGE FINISHES  
 02-32 - EXTERIOR ANTI-SCALING FINISHES  
 02-33 - EXTERIOR ANTI-PEELING FINISHES  
 02-34 - EXTERIOR ANTI-FLAKING FINISHES  
 02-35 - EXTERIOR ANTI-BLEEDING FINISHES  
 02-36 - EXTERIOR ANTI-SODIUM SULFATE FINISHES  
 02-37 - EXTERIOR ANTI-ACID FINISHES  
 02-38 - EXTERIOR ANTI-ALKALI FINISHES  
 02-39 - EXTERIOR ANTI-SALT FINISHES  
 02-40 - EXTERIOR ANTI-OIL FINISHES  
 02-41 - EXTERIOR ANTI-GRAFFITI FINISHES  
 02-42 - EXTERIOR ANTI-VANDALISM FINISHES  
 02-43 - EXTERIOR ANTI-THEFT FINISHES  
 02-44 - EXTERIOR ANTI-FIRE FINISHES  
 02-45 - EXTERIOR ANTI-UV FINISHES  
 02-46 - EXTERIOR ANTI-POLLUTION FINISHES  
 02-47 - EXTERIOR ANTI-WEAR FINISHES  
 02-48 - EXTERIOR ANTI-SCUFF FINISHES  
 02-49 - EXTERIOR ANTI-IMPACT FINISHES  
 02-50 - EXTERIOR ANTI-GLASS FINISHES  
 02-51 - EXTERIOR ANTI-SHOCK FINISHES  
 02-52 - EXTERIOR ANTI-CRACK FINISHES  
 02-53 - EXTERIOR ANTI-SPALL FINISHES  
 02-54 - EXTERIOR ANTI-CHIPPAGE FINISHES  
 02-55 - EXTERIOR ANTI-SCALING FINISHES  
 02-56 - EXTERIOR ANTI-PEELING FINISHES  
 02-57 - EXTERIOR ANTI-FLAKING FINISHES  
 02-58 - EXTERIOR ANTI-BLEEDING FINISHES  
 02-59 - EXTERIOR ANTI-SODIUM SULFATE FINISHES  
 02-60 - EXTERIOR ANTI-ACID FINISHES  
 02-61 - EXTERIOR ANTI-ALKALI FINISHES  
 02-62 - EXTERIOR ANTI-SALT FINISHES  
 02-63 - EXTERIOR ANTI-OIL FINISHES  
 02-64 - EXTERIOR ANTI-GRAFFITI FINISHES  
 02-65 - EXTERIOR ANTI-VANDALISM FINISHES  
 02-66 - EXTERIOR ANTI-THEFT FINISHES  
 02-67 - EXTERIOR ANTI-FIRE FINISHES  
 02-68 - EXTERIOR ANTI-UV FINISHES  
 02-69 - EXTERIOR ANTI-POLLUTION FINISHES  
 02-70 - EXTERIOR ANTI-WEAR FINISHES  
 02-71 - EXTERIOR ANTI-SCUFF FINISHES  
 02-72 - EXTERIOR ANTI-IMPACT FINISHES  
 02-73 - EXTERIOR ANTI-GLASS FINISHES  
 02-74 - EXTERIOR ANTI-SHOCK FINISHES  
 02-75 - EXTERIOR ANTI-CRACK FINISHES  
 02-76 - EXTERIOR ANTI-SPALL FINISHES  
 02-77 - EXTERIOR ANTI-CHIPPAGE FINISHES  
 02-78 - EXTERIOR ANTI-SCALING FINISHES  
 02-79 - EXTERIOR ANTI-PEELING FINISHES  
 02-80 - EXTERIOR ANTI-FLAKING FINISHES  
 02-81 - EXTERIOR ANTI-BLEEDING FINISHES  
 02-82 - EXTERIOR ANTI-SODIUM SULFATE FINISHES  
 02-83 - EXTERIOR ANTI-ACID FINISHES  
 02-84 - EXTERIOR ANTI-ALKALI FINISHES  
 02-85 - EXTERIOR ANTI-SALT FINISHES  
 02-86 - EXTERIOR ANTI-OIL FINISHES  
 02-87 - EXTERIOR ANTI-GRAFFITI FINISHES  
 02-88 - EXTERIOR ANTI-VANDALISM FINISHES  
 02-89 - EXTERIOR ANTI-THEFT FINISHES  
 02-90 - EXTERIOR ANTI-FIRE FINISHES  
 02-91 - EXTERIOR ANTI-UV FINISHES  
 02-92 - EXTERIOR ANTI-POLLUTION FINISHES  
 02-93 - EXTERIOR ANTI-WEAR FINISHES  
 02-94 - EXTERIOR ANTI-SCUFF FINISHES  
 02-95 - EXTERIOR ANTI-IMPACT FINISHES  
 02-96 - EXTERIOR ANTI-GLASS FINISHES  
 02-97 - EXTERIOR ANTI-SHOCK FINISHES  
 02-98 - EXTERIOR ANTI-CRACK FINISHES  
 02-99 - EXTERIOR ANTI-SPALL FINISHES  
 03-00 - EXTERIOR ANTI-CHIPPAGE FINISHES

**SECTION 03 - INTERIOR FINISHES**  
 03-01 - INTERIOR PAINTS AND COATINGS  
 03-02 - INTERIOR WALL FINISHES  
 03-03 - INTERIOR ROOF FINISHES  
 03-04 - INTERIOR FLOOR FINISHES  
 03-05 - INTERIOR METAL FINISHES  
 03-06 - INTERIOR GLASS FINISHES  
 03-07 - INTERIOR STONE FINISHES  
 03-08 - INTERIOR TILE FINISHES  
 03-09 - INTERIOR CONCRETE FINISHES  
 03-10 - INTERIOR BRICK FINISHES  
 03-11 - INTERIOR BLOCK FINISHES  
 03-12 - INTERIOR PLASTER FINISHES  
 03-13 - INTERIOR GROUT FINISHES  
 03-14 - INTERIOR SEALERS  
 03-15 - INTERIOR PROTECTIVE COATINGS  
 03-16 - INTERIOR CORROSION RESISTANT FINISHES  
 03-17 - INTERIOR ANTI-CORROSION FINISHES  
 03-18 - INTERIOR ANTI-GRAFFITI FINISHES  
 03-19 - INTERIOR ANTI-VANDALISM FINISHES  
 03-20 - INTERIOR ANTI-THEFT FINISHES  
 03-21 - INTERIOR ANTI-FIRE FINISHES  
 03-22 - INTERIOR ANTI-UV FINISHES  
 03-23 - INTERIOR ANTI-POLLUTION FINISHES  
 03-24 - INTERIOR ANTI-WEAR FINISHES  
 03-25 - INTERIOR ANTI-SCUFF FINISHES  
 03-26 - INTERIOR ANTI-IMPACT FINISHES  
 03-27 - INTERIOR ANTI-GLASS FINISHES  
 03-28 - INTERIOR ANTI-SHOCK FINISHES  
 03-29 - INTERIOR ANTI-CRACK FINISHES  
 03-30 - INTERIOR ANTI-SPALL FINISHES  
 03-31 - INTERIOR ANTI-CHIPPAGE FINISHES  
 03-32 - INTERIOR ANTI-SCALING FINISHES  
 03-33 - INTERIOR ANTI-PEELING FINISHES  
 03-34 - INTERIOR ANTI-FLAKING FINISHES  
 03-35 - INTERIOR ANTI-BLEEDING FINISHES  
 03-36 - INTERIOR ANTI-SODIUM SULFATE FINISHES  
 03-37 - INTERIOR ANTI-ACID FINISHES  
 03-38 - INTERIOR ANTI-ALKALI FINISHES  
 03-39 - INTERIOR ANTI-SALT FINISHES  
 03-40 - INTERIOR ANTI-OIL FINISHES  
 03-41 - INTERIOR ANTI-GRAFFITI FINISHES  
 03-42 - INTERIOR ANTI-VANDALISM FINISHES  
 03-43 - INTERIOR ANTI-THEFT FINISHES  
 03-44 - INTERIOR ANTI-FIRE FINISHES  
 03-45 - INTERIOR ANTI-UV FINISHES  
 03-46 - INTERIOR ANTI-POLLUTION FINISHES  
 03-47 - INTERIOR ANTI-WEAR FINISHES  
 03-48 - INTERIOR ANTI-SCUFF FINISHES  
 03-49 - INTERIOR ANTI-IMPACT FINISHES  
 03-50 - INTERIOR ANTI-GLASS FINISHES  
 03-51 - INTERIOR ANTI-SHOCK FINISHES  
 03-52 - INTERIOR ANTI-CRACK FINISHES  
 03-53 - INTERIOR ANTI-SPALL FINISHES  
 03-54 - INTERIOR ANTI-CHIPPAGE FINISHES  
 03-55 - INTERIOR ANTI-SCALING FINISHES  
 03-56 - INTERIOR ANTI-PEELING FINISHES  
 03-57 - INTERIOR ANTI-FLAKING FINISHES  
 03-58 - INTERIOR ANTI-BLEEDING FINISHES  
 03-59 - INTERIOR ANTI-SODIUM SULFATE FINISHES  
 03-60 - INTERIOR ANTI-ACID FINISHES  
 03-61 - INTERIOR ANTI-ALKALI FINISHES  
 03-62 - INTERIOR ANTI-SALT FINISHES  
 03-63 - INTERIOR ANTI-OIL FINISHES  
 03-64 - INTERIOR ANTI-GRAFFITI FINISHES  
 03-65 - INTERIOR ANTI-VANDALISM FINISHES  
 03-66 - INTERIOR ANTI-THEFT FINISHES  
 03-67 - INTERIOR ANTI-FIRE FINISHES  
 03-68 - INTERIOR ANTI-UV FINISHES  
 03-69 - INTERIOR ANTI-POLLUTION FINISHES  
 03-70 - INTERIOR ANTI-WEAR FINISHES  
 03-71 - INTERIOR ANTI-SCUFF FINISHES  
 03-72 - INTERIOR ANTI-IMPACT FINISHES  
 03-73 - INTERIOR ANTI-GLASS FINISHES  
 03-74 - INTERIOR ANTI-SHOCK FINISHES  
 03-75 - INTERIOR ANTI-CRACK FINISHES  
 03-76 - INTERIOR ANTI-SPALL FINISHES  
 03-77 - INTERIOR ANTI-CHIPPAGE FINISHES  
 03-78 - INTERIOR ANTI-SCALING FINISHES  
 03-79 - INTERIOR ANTI-PEELING FINISHES  
 03-80 - INTERIOR ANTI-FLAKING FINISHES  
 03-81 - INTERIOR ANTI-BLEEDING FINISHES  
 03-82 - INTERIOR ANTI-SODIUM SULFATE FINISHES  
 03-83 - INTERIOR ANTI-ACID FINISHES  
 03-84 - INTERIOR ANTI-ALKALI FINISHES  
 03-85 - INTERIOR ANTI-SALT FINISHES  
 03-86 - INTERIOR ANTI-OIL FINISHES  
 03-87 - INTERIOR ANTI-GRAFFITI FINISHES  
 03-88 - INTERIOR ANTI-VANDALISM FINISHES  
 03-89 - INTERIOR ANTI-THEFT FINISHES  
 03-90 - INTERIOR ANTI-FIRE FINISHES  
 03-91 - INTERIOR ANTI-UV FINISHES  
 03-92 - INTERIOR ANTI-POLLUTION FINISHES  
 03-93 - INTERIOR ANTI-WEAR FINISHES  
 03-94 - INTERIOR ANTI-SCUFF FINISHES  
 03-95 - INTERIOR ANTI-IMPACT FINISHES  
 03-96 - INTERIOR ANTI-GLASS FINISHES  
 03-97 - INTERIOR ANTI-SHOCK FINISHES  
 03-98 - INTERIOR ANTI-CRACK FINISHES  
 03-99 - INTERIOR ANTI-SPALL FINISHES  
 04-00 - INTERIOR ANTI-CHIPPAGE FINISHES

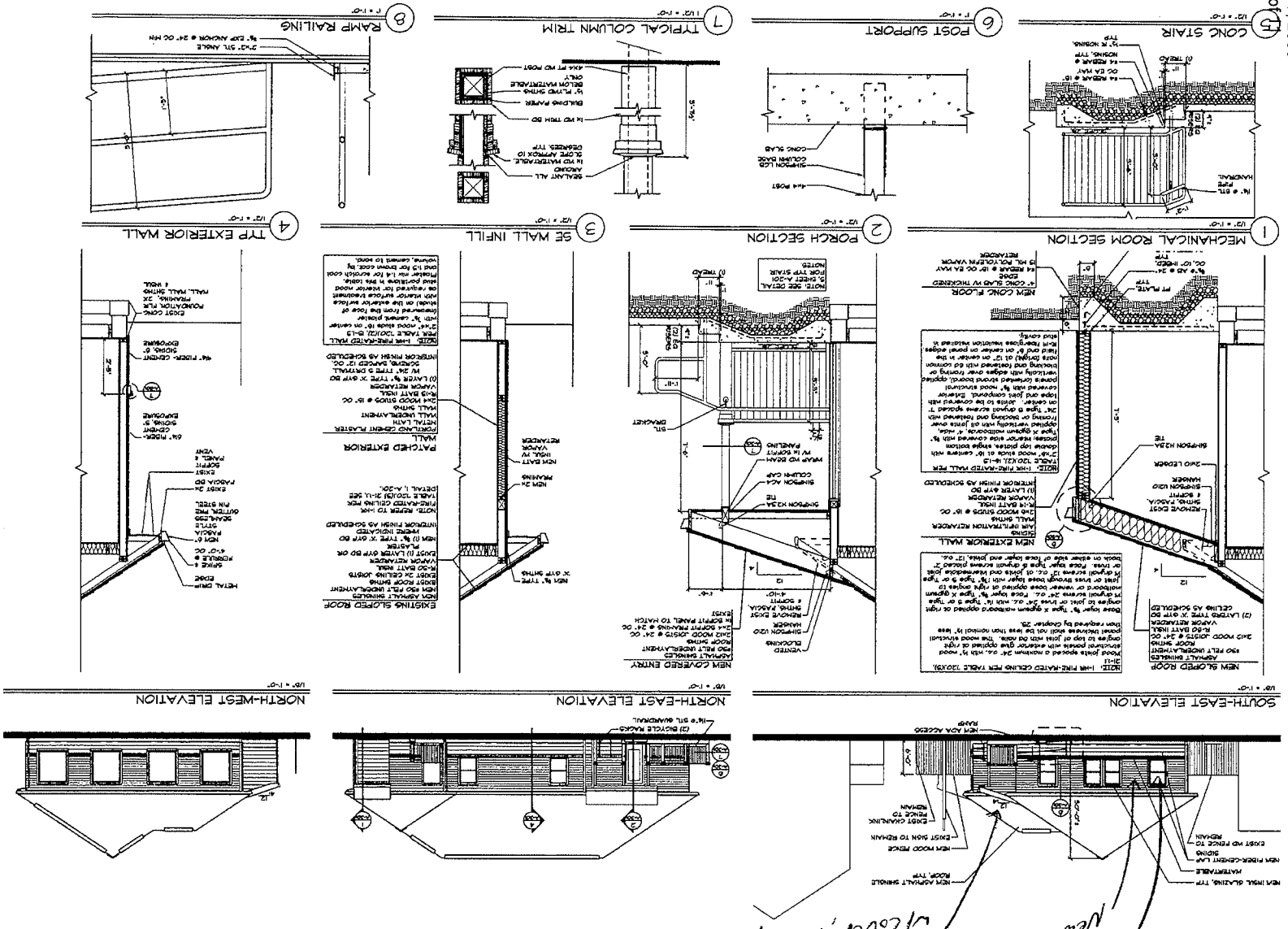
**SECTION 04 - MECHANICAL AND ELECTRICAL**  
 04-01 - MECHANICAL  
 04-02 - ELECTRICAL  
 04-03 - PLUMBING  
 04-04 - HEATING  
 04-05 - COOLING  
 04-06 - VENTILATION  
 04-07 - EXHAUST  
 04-08 - FUEL GAS  
 04-09 - WATER SUPPLY  
 04-10 - SEWER  
 04-11 - SANITATION  
 04-12 - FIRE PROTECTION  
 04-13 - ALARM SYSTEMS  
 04-14 - ACCESS CONTROL  
 04-15 - SECURITY SYSTEMS  
 04-16 - COMMUNICATIONS  
 04-17 - DATA COMMUNICATIONS  
 04-18 - TELEVISION  
 04-19 - AUDIO  
 04-20 - VIDEO  
 04-21 - LIGHTING  
 04-22 - ENERGY MANAGEMENT  
 04-23 - BUILDING AUTOMATION  
 04-24 - SCHEDULING  
 04-25 - MONITORING  
 04-26 - CONTROLS  
 04-27 - TESTING  
 04-28 - COMMISSIONING  
 04-29 - TRAINING  
 04-30 - MAINTENANCE  
 04-31 - REPAIRS  
 04-32 - UPGRADES  
 04-33 - MODIFICATIONS  
 04-34 - DEMOLITION  
 04-35 - RESTORATION  
 04-36 - PRESERVATION  
 04-37 - RECONSTRUCTION  
 04-38 - RENOVATION  
 04-39 - EXPANSION  
 04-40 - ADDITION  
 04-41 - ALTERATION  
 04-42 - REPAIR  
 04-43 - MAINTENANCE  
 04-44 - INSPECTION  
 04-45 - TESTING  
 04-46 - COMMISSIONING  
 04-47 - TRAINING  
 04-48 - MAINTENANCE  
 04-49 - REPAIRS  
 04-50 - UPGRADES  
 04-51 - MODIFICATIONS  
 04-52 - DEMOLITION  
 04-53 - RESTORATION  
 04-54 - PRESERVATION  
 04-55 - RECONSTRUCTION  
 04-56 - RENOVATION  
 04-57 - EXPANSION  
 04-58 - ADDITION  
 04-59 - ALTERATION  
 04-60 - REPAIR  
 04-61 - MAINTENANCE  
 04-62 - INSPECTION  
 04-63 - TESTING  
 04-64 - COMMISSIONING  
 04-65 - TRAINING  
 04-66 - MAINTENANCE  
 04-67 - REPAIRS  
 04-68 - UPGRADES  
 04-69 - MODIFICATIONS  
 04-70 - DEMOLITION  
 04-71 - RESTORATION  
 04-72 - PRESERVATION  
 04-73 - RECONSTRUCTION  
 04-74 - RENOVATION  
 04-75 - EXPANSION  
 04-76 - ADDITION  
 04-77 - ALTERATION  
 04-78 - REPAIR  
 04-79 - MAINTENANCE  
 04-80 - INSPECTION  
 04-81 - TESTING  
 04-82 - COMMISSIONING  
 04-83 - TRAINING  
 04-84 - MAINTENANCE  
 04-85 - REPAIRS  
 04-86 - UPGRADES  
 04-87 - MODIFICATIONS  
 04-88 - DEMOLITION  
 04-89 - RESTORATION  
 04-90 - PRESERVATION  
 04-91 - RECONSTRUCTION  
 04-92 - RENOVATION  
 04-93 - EXPANSION  
 04-94 - ADDITION  
 04-95 - ALTERATION  
 04-96 - REPAIR  
 04-97 - MAINTENANCE  
 04-98 - INSPECTION  
 04-99 - TESTING  
 05-00 - COMMISSIONING

**SECTION 05 - STRUCTURAL**  
 05-01 - FOUNDATIONS  
 05-02 - CONCRETE  
 05-03 - STEEL  
 05-04 - WOOD  
 05-05 - BRICK  
 05-06 - BLOCK  
 05-07 - PLASTER  
 05-08 - GROUT  
 05-09 - SEALERS  
 05-10 - PROTECTIVE COATINGS  
 05-11 - CORROSION RESISTANT FINISHES  
 05-12 - ANTI-CORROSION FINISHES  
 05-13 - ANTI-GRAFFITI FINISHES  
 05-14 - ANTI-VANDALISM FINISHES  
 05-15 - ANTI-THEFT FINISHES  
 05-16 - ANTI-FIRE FINISHES  
 05-17 - ANTI-UV FINISHES  
 05-18 - ANTI-POLLUTION FINISHES  
 05-19 - ANTI-WEAR FINISHES  
 05-20 - ANTI-SCUFF FINISHES  
 05-21 - ANTI-IMPACT FINISHES  
 05-22 - ANTI-GLASS FINISHES  
 05-23 - ANTI-SHOCK FINISHES  
 05-24 - ANTI-CRACK FINISHES  
 05-25 - ANTI-SPALL FINISHES  
 05-26 - ANTI-CHIPPAGE FINISHES  
 05-27 - ANTI-SCALING FINISHES  
 05-28 - ANTI-PEELING FINISHES  
 05-29 - ANTI-FLAKING FINISHES  
 05-30 - ANTI-BLEEDING FINISHES  
 05-31 - ANTI-SODIUM SULFATE FINISHES  
 05-32 - ANTI-ACID FINISHES  
 05-33 - ANTI-ALKALI FINISHES  
 05-34 - ANTI-SALT FINISHES  
 05-35 - ANTI-OIL FINISHES  
 05-36 - ANTI-GRAFFITI FINISHES  
 05-37 - ANTI-VANDALISM FINISHES  
 05-38 - ANTI-THEFT FINISHES  
 05-39 - ANTI-FIRE FINISHES  
 05-40 - ANTI-UV FINISHES  
 05-41 - ANTI-POLLUTION FINISHES  
 05-42 - ANTI-WEAR FINISHES  
 05-43 - ANTI-SCUFF FINISHES  
 05-44 - ANTI-IMPACT FINISHES  
 05-45 - ANTI-GLASS FINISHES  
 05-46 - ANTI-SHOCK FINISHES  
 05-47 - ANTI-CRACK FINISHES  
 05-48 - ANTI-SPALL FINISHES  
 05-49 - ANTI-CHIPPAGE FINISHES  
 05-50 - ANTI-SCALING FINISHES  
 05-51 - ANTI-PEELING FINISHES  
 05-52 - ANTI-FLAKING FINISHES  
 05-53 - ANTI-BLEEDING FINISHES  
 05-54 - ANTI-SODIUM SULFATE FINISHES  
 05-55 - ANTI-ACID FINISHES  
 05-56 - ANTI-ALKALI FINISHES  
 05-57 - ANTI-SALT FINISHES  
 05-58 - ANTI-OIL FINISHES  
 05-59 - ANTI-GRAFFITI FINISHES  
 05-60 - ANTI-VANDALISM FINISHES  
 05-61 - ANTI-THEFT FINISHES  
 05-62 - ANTI-FIRE FINISHES  
 05-63 - ANTI-UV FINISHES  
 05-64 - ANTI-POLLUTION FINISHES  
 05-65 - ANTI-WEAR FINISHES  
 05-66 - ANTI-SCUFF FINISHES  
 05-67 - ANTI-IMPACT FINISHES  
 05-68 - ANTI-GLASS FINISHES  
 05-69 - ANTI-SHOCK FINISHES  
 05-70 - ANTI-CRACK FINISHES  
 05-71 - ANTI-SPALL FINISHES  
 05-72 - ANTI-CHIPPAGE FINISHES  
 05-73 - ANTI-SCALING FINISHES  
 05-74 - ANTI-PEELING FINISHES  
 05-75 - ANTI-FLAKING FINISHES  
 05-76 - ANTI-BLEEDING FINISHES  
 05-77 - ANTI-SODIUM SULFATE FINISHES  
 05-78 - ANTI-ACID FINISHES  
 05-79 - ANTI-ALKALI FINISHES  
 05-80 - ANTI-SALT FINISHES  
 05-81 - ANTI-OIL FINISHES  
 05-82 - ANTI-GRAFFITI FINISHES  
 05-83 - ANTI-VANDALISM FINISHES  
 05-84 - ANTI-THEFT FINISHES  
 05-85 - ANTI-FIRE FINISHES  
 05-86 - ANTI-UV FINISHES  
 05-87 - ANTI-POLLUTION FINISHES  
 05-88 - ANTI-WEAR FINISHES  
 05-89 - ANTI-SCUFF FINISHES  
 05-90 - ANTI-IMPACT FINISHES  
 05-91 - ANTI-GLASS FINISHES  
 05-92 - ANTI-SHOCK FINISHES  
 05-93 - ANTI-CRACK FINISHES  
 05-94 - ANTI-SPALL FINISHES  
 05-95 - ANTI-CHIPPAGE FINISHES  
 05-96 - ANTI-SCALING FINISHES  
 05-97 - ANTI-PEELING FINISHES  
 05-98 - ANTI-FLAKING FINISHES  
 05-99 - ANTI-BLEEDING FINISHES  
 06-00 - ANTI-SODIUM SULFATE FINISHES

**SECTION 06 - SPECIALTIES**  
 06-01 - GLASS  
 06-02 - METAL  
 06-03 - WOOD  
 06-04 - STONE  
 06-05 - TILE  
 06-06 - PLASTER  
 06-07 - GROUT  
 06-08 - SEALERS  
 06-09 - PROTECTIVE COATINGS  
 06-10 - CORROSION RESISTANT FINISHES  
 06-11 - ANTI-CORROSION FINISHES  
 06-12 - ANTI-GRAFFITI FINISHES  
 06-13 - ANTI-VANDALISM FINISHES  
 06-14 - ANTI-THEFT FINISHES  
 06-15 - ANTI-FIRE FINISHES  
 06-16 - ANTI-UV FINISHES  
 06-17 - ANTI-POLLUTION FINISHES  
 06-18 - ANTI-WEAR FINISHES  
 06-19 - ANTI-SCUFF FINISHES  
 06-20 - ANTI-IMPACT FINISHES  
 06-21 - ANTI-GLASS FINISHES  
 06-22 - ANTI-SHOCK FINISHES  
 06-23 - ANTI-CRACK FINISHES  
 06-24 - ANTI-SPALL FINISHES  
 06-25 - ANTI-CHIPPAGE FINISHES  
 06-26 - ANTI-SCALING FINISHES  
 06-27 - ANTI-PEELING FINISHES  
 06-28 - ANTI-FLAKING FINISHES  
 06-29 - ANTI-BLEEDING FINISHES  
 06-30 - ANTI-SODIUM SULFATE FINISHES  
 06-31 - ANTI-ACID FINISHES  
 06-32 - ANTI-ALKALI FINISHES  
 06-33 - ANTI-SALT FINISHES  
 06-34 - ANTI-OIL FINISHES  
 06-35 - ANTI-GRAFFITI FINISHES  
 06-36 - ANTI-VANDALISM FINISHES  
 06-37 - ANTI-THEFT FINISHES  
 06-38 - ANTI-FIRE FINISHES  
 06-39 - ANTI-UV FINISHES  
 06-40 - ANTI-POLLUTION FINISHES  
 06-41 - ANTI-WEAR FINISHES  
 06-42 - ANTI-SCUFF FINISHES  
 06-43 - ANTI-IMPACT FINISHES  
 06-44 - ANTI-GLASS FINISHES  
 06-45 - ANTI-SHOCK FINISHES  
 06-46 - ANTI-CRACK FINISHES  
 06-47 - ANTI-SPALL FINISHES  
 06-48 - ANTI-CHIPPAGE FINISHES  
 06-49 - ANTI-SCALING FINISHES  
 06-50 - ANTI-PEELING FINISHES  
 06-51 - ANTI-FLAKING FINISHES  
 06-52 - ANTI-BLEEDING FINISHES  
 06-53 - ANTI-SODIUM SULFATE FINISHES  
 06-54 - ANTI-ACID FINISHES  
 06-55 - ANTI-ALKALI FINISHES  
 06-56 - ANTI-SALT FINISHES  
 06-57 - ANTI-OIL FINISHES  
 06-58 - ANTI-GRAFFITI FINISHES  
 06-59 - ANTI-VANDALISM FINISHES  
 06-60 - ANTI-THEFT FINISHES  
 06-61 - ANTI-FIRE FINISHES  
 06-62 - ANTI-UV FINISHES  
 06-63 - ANTI-POLLUTION FINISHES  
 06-64 - ANTI-WEAR FINISHES  
 06-65 - ANTI-SCUFF FINISHES  
 06-66 - ANTI-IMPACT FINISHES  
 06-67 - ANTI-GLASS FINISHES  
 06-68 - ANTI-SHOCK FINISHES  
 06-69 - ANTI-CRACK FINISHES  
 06-70 - ANTI-SPALL FINISHES  
 06-71 - ANTI-CHIPPAGE FINISHES  
 06-72 - ANTI-SCALING FINISHES  
 06-73 - ANTI-PEELING FINISHES  
 06-74 - ANTI-FLAKING FINISHES  
 06-75 - ANTI-BLEEDING FINISHES  
 06-76 - ANTI-SODIUM SULFATE FINISHES  
 06-77 - ANTI-ACID FINISHES  
 06-78 - ANTI-ALKALI FINISHES  
 06-79 - ANTI-SALT FINISHES  
 06-80 - ANTI-OIL FINISHES  
 06-81 - ANTI-GRAFFITI FINISHES  
 06-82 - ANTI-VANDALISM FINISHES  
 06-83 - ANTI-THEFT FINISHES  
 06-84 - ANTI-FIRE FINISHES  
 06-85 - ANTI-UV FINISHES  
 06-86 - ANTI-POLLUTION FINISHES  
 06-87 - ANTI-WEAR FINISHES  
 06-88 - ANTI-SCUFF FINISHES  
 06-89 - ANTI-IMPACT FINISHES  
 06-90 - ANTI-GLASS FINISHES  
 06-91 - ANTI-SHOCK FINISHES  
 06-92 - ANTI-CRACK FINISHES  
 06-93 - ANTI-SPALL FINISHES  
 06-94 - ANTI-CHIPPAGE FINISHES  
 06-95 - ANTI-SCALING FINISHES  
 06-96 - ANTI-PEELING FINISHES  
 06-97 - ANTI-FLAKING FINISHES  
 06-98 - ANTI-BLEEDING FINISHES  
 06-99 - ANTI-SODIUM SULFATE FINISHES  
 07-00 - ANTI-ACID FINISHES

**SECTION 07 - FINISHES**  
 07-01 - PAINTS AND COATINGS  
 07-02 - WALL FINISHES  
 07-03 - FLOOR FINISHES  
 07-04 - METAL FINISHES  
 07-05 - GLASS FINISHES  
 07-06 - STONE FINISHES  
 07-07 - TILE FINISHES  
 07-08 - CONCRETE FINISHES  
 07-09 - BRICK FINISHES  
 07-10 - BLOCK FINISHES  
 07-11 - PLASTER FINISHES  
 07-12 - GROUT FINISHES  
 07-13 - SEALERS  
 07-14 - PROTECTIVE COATINGS  
 07-15 - CORROSION RESISTANT FINISHES  
 07-16 - ANTI-CORROSION FINISHES  
 07-17 - ANTI-GRAFFITI FINISHES  
 07-18 - ANTI-VANDALISM FINISHES  
 07-19 - ANTI-THEFT FINISHES  
 07-20 - ANTI-FIRE FINISHES  
 07-21 - ANTI-UV FINISHES  
 07-22 - ANTI-POLLUTION FINISHES  
 07-23 - ANTI-WEAR FINISHES  
 07-24 - ANTI-SCUFF FINISHES  
 07-25 - ANTI-IMPACT FINISHES  
 07-26 - ANTI-GLASS FINISHES  
 07-27 - ANTI-SHOCK FINISHES  
 07-28 - ANTI-CRACK FINISHES  
 07-29 - ANTI-SPALL FINISHES  
 07-30 - ANTI-CHIPPAGE FINISHES  
 07-31 - ANTI-SCALING FINISHES  
 07-32 - ANTI-PEELING FINISHES  
 07-33 - ANTI-FLAKING FINISHES  
 07-34 - ANTI-BLEEDING FINISHES  
 07-35 - ANTI-SODIUM SULFATE FINISHES  
 07-36 - ANTI-ACID FINISHES  
 07-37 - ANTI-ALKALI FINISHES  
 07-38 - ANTI-SALT FINISHES  
 07-39 - ANTI-OIL FINISHES  
 07-40 - ANTI-GRAFFITI FINISHES  
 07-41 - ANTI-VANDALISM FINISHES  
 07-42 - ANTI-THEFT FINISHES  
 07-43 - ANTI-FIRE FINISHES  
 07-44 - ANTI-UV FINISHES  
 07-45 - ANTI-POLLUTION FINISHES  
 07-46 - ANTI-WEAR FINISHES  
 07-47 - ANTI-SCUFF FINISHES  
 07-48 - ANTI-IMPACT FINISHES  
 07-49 - ANTI-GLASS FINISHES  
 07-50 - ANTI-SHOCK FINISHES  
 07-51 - ANTI-CRACK FINISHES  
 07-52 - ANTI-SPALL FINISHES  
 07-53 - ANTI-CHIPPAGE FINISHES  
 07-54 - ANTI-SCALING FINISHES  
 07-55 - ANTI-PEELING FINISHES  
 07-56 - ANTI-FLAKING FINISHES  
 07-57 - ANTI-BLEEDING FINISHES  
 07-58 - ANTI-SODIUM SULFATE FINISHES  
 07-59 - ANTI-ACID FINISHES  
 07-60 - ANTI-ALKALI FINISHES  
 07-61 - ANTI-SALT FINISHES  
 07-62 - ANTI-OIL FINISHES  
 07-63 - ANTI-GRAFFITI FINISHES  
 07-64 - ANTI-VANDALISM FINISHES  
 07-65 - ANTI-THEFT FINISHES  
 07-66 - ANTI-FIRE FINISHES  
 07-67 - ANTI-UV FINISHES  
 07-68 - ANTI-POLLUTION FINISHES  
 07-69 - ANTI-WEAR FINISHES  
 07-70 - ANTI-SCUFF FINISHES  
 07-71 - ANTI-IMPACT FINISHES  
 07-72 - ANTI-GLASS FINISHES  
 07-73 - ANTI-SHOCK FINISHES  
 07-74 - ANTI-CRACK FINISHES  
 07-75 - ANTI-SPALL FINISHES  
 07-76 - ANTI-CHIPPAGE FINISHES  
 07-77 - ANTI-SCALING FINISHES  
 07-78 - ANTI-PEELING FINISHES  
 07-79 - ANTI-FLAKING FINISHES  
 07-80 - ANTI-BLEEDING FINISHES  
 07-81 - ANTI-SODIUM SULFATE FINISHES  
 07-82 - ANTI-ACID FINISHES  
 07-83 - ANTI-ALKALI FINISHES  
 07-84 - ANTI-SALT FINISHES  
 07-85 - ANTI-OIL FINISHES  
 07-86 - ANTI-GRAFFITI FINISHES  
 07-87 - ANTI-VANDALISM FINISHES  
 07-88 - ANTI-THEFT FINISHES  
 07-89 - ANTI-FIRE FINISHES  
 07-90 - ANTI-UV FINISHES  
 07-91 - ANTI-POLLUTION FINISHES  
 07-92 - ANTI-WEAR FINISHES  
 07-93 - ANTI-SCUFF FINISHES  
 07-94 - ANTI-IMPACT FINISHES  
 07-95 - ANTI-GLASS FINISHES  
 07-96 - ANTI-SHOCK FINISHES  
 07-97 - ANTI-CRACK FINISHES  
 07-98 - ANTI-SPALL FINISHES  
 07-99 - ANTI-CHIPPAGE FINISHES  
 08-00 - ANTI-SCALING FINISHES

**SECTION 08 - EQUIPMENT**  
 08-01 - MECHANICAL  
 08-02 - ELECTRICAL  
 08-03 - PLUMBING  
 08-04 - HEATING  
 08-05 - COOLING  
 08-06 - VENTILATION  
 08-07 - EXHAUST  
 08-08 - FUEL GAS  
 08-09 - WATER SUPPLY  
 08-10 - SEWER  
 08-11 - SANITATION  
 08-12 - FIRE PROTECTION  
 08-13 - ALARM SYSTEMS  
 08-14 - ACCESS CONTROL  
 08-15 - SECURITY SYSTEMS  
 08-16 - COMMUNICATIONS  
 08-17 - DATA COMMUNICATIONS  
 08-18 - TELEVISION  
 08-19 - AUDIO  
 08-20 - VIDEO  
 08-21 - LIGHTING  
 08-22 - ENERGY MANAGEMENT  
 08-23 - BUILDING AUTOMATION  
 08-24 - SCHEDULING  
 08-25 - MONITORING  
 08-26 - CONTROLS  
 08-27 - TESTING  
 08-28 - COMMISSIONING  
 08-29 - TRAINING  
 08-30 - MAINTENANCE  
 08-31 - REPAIRS  
 08-32 - UPGRADES  
 08-33 - MODIFICATIONS  
 08-34 - DEMOLITION  
 08-35 - RESTORATION  
 08-36 - PRESERVATION  
 08-37 - RECONSTRUCTION  
 08-38 - RENOVATION  
 08-39 - EXPANSION  
 08-40 - ADDITION  
 08-41 - ALTERATION  
 08-42 - REPAIR  
 08-43 - MAINTENANCE  
 08-44 - INSPECTION  
 08-45 - TESTING  
 08-46 - COMMISSIONING  
 08-47 - TRAINING  
 0



*New windows*  
*New siding*  
*New entry/bike parking, ADA ramp*  
*W/cover*

**CARLSON VITTT ARCHITECTS**

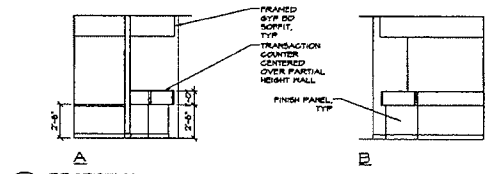
ARCHITECTURE • INTERIOR DESIGN

3005 SHERWOOD ROAD NORTH, SUITE 100, OREGON 97133  
 REBEKAH ANDERSON, PARTNER  
 JAMES CARLSON, PARTNER  
 JENNIFER VITTT, ARCHITECT

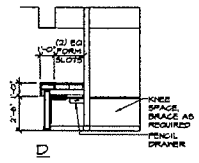
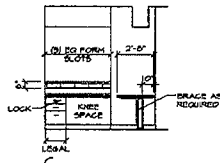
SHERWOOD OLD TOWN DENTAL  
 16045 SW RAILROAD STREET  
 SHERWOOD, OREGON

ELEVATIONS & SECTIONS  
 A-201

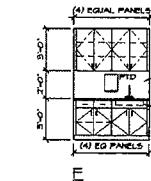
DATE: 09-09-08  
 DRAWN BY: BDD  
 CHECKED BY: CDD  
 PROJECT NO: A-201X-10007  
 COMPANY: CARLSON VITTT ARCHITECTS P.C.



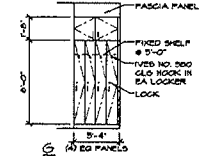
1 RECEPTION  
 1/4" x 1'-0"



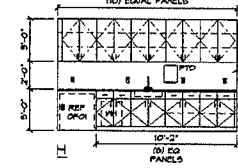
2 STAFF  
 1/4" x 1'-0"



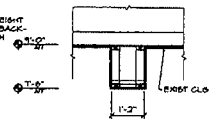
5 LAB  
 1/4" x 1'-0"  
 RM 110  
 18" DEEP UPPER CABINETS  
 24" DEEP BASE CABINETS



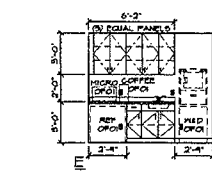
6 STAFF TOILET  
 1/4" x 1'-0"  
 RM 111



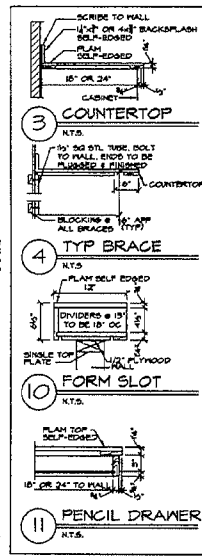
7 STERILE  
 1/4" x 1'-0"  
 RM 112  
 18" DEEP UPPER CABINETS  
 24" DEEP BASE CABINETS



8 SOFFIT  
 1/2" x 1'-0"



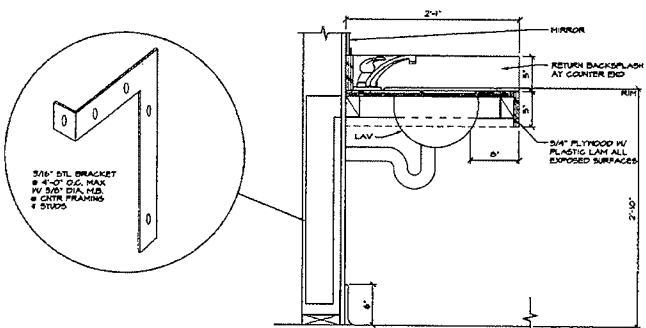
9 NOT USED  
 1/4" x 1'-0"



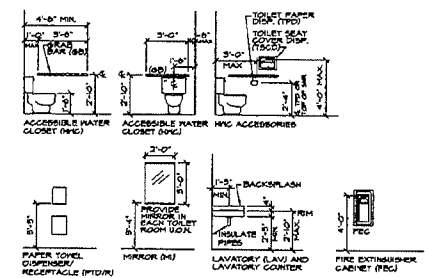
11 PENCIL DRAWER  
 N.T.S.

GENERAL NOTES

- ALL EXPOSED SURFACES OF CASEWORK TO BE PLASTIC LAMINATE, UNCL. TYPICAL ENTIRE PROJECT.
- 3/8" BACK SPLASH TYP IN DRY AREAS.
- 4" MIN. BACK SPLASH TYP ADJ TO NET COUNTERS.
- ADJUSTABLE SHELVES TYP IN UPPER CABINETS. REFER TO DTLS B, 4, 10, & 18A-200 FOR TYP CASEWORK CONSTRUCTION.



12 LAVATORY COUNTER  
 1 1/2" x 1'-0"



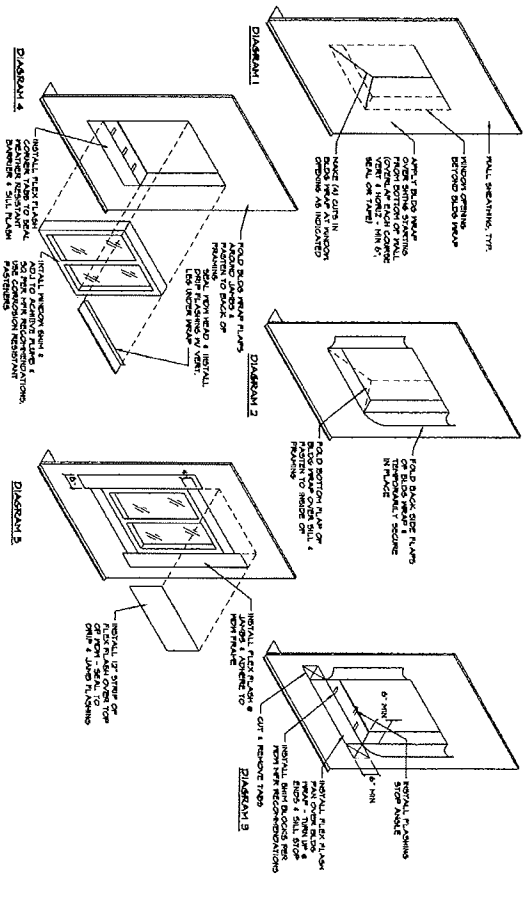
FIXTURE MOUNTING HEIGHTS  
 N.T.S.  
 TYPICAL UNLESS OTHERWISE NOTED  
 ALL DIMENSIONS ARE CLEAR FINISH

**CARLSON VEIT ARCHITECTS PC**  
 ARCHITECTURE • INTERIOR DESIGN  
 4000 NORTH LEWIS ROAD, SUITE 1100, PORTLAND, OREGON 97217  
 503.253.8888  
 3045 RIVER ROAD NORTH, SALEM, OREGON 97303  
 MEMBER AMERICAN INSTITUTE OF ARCHITECTS

**SHERWOOD OLD TOWN DENTAL**  
 1504 S. 5th AVE. RAILROAD STREET  
 SHERWOOD, OREGON

DATE: 10/07  
 PROJECT: 10007  
 SHEET: A-201X-10007  
 DRAWN BY: BDO  
 CHECKED BY: CDC  
 COPYRIGHT © 2008  
 Carlson Veit Architects P.C.  
 INTERIOR ELEVATIONS  
 SHEET: A-202  
 OF

4 WINDOW FLASHING INSTALLATION



1 TYP WINDOW HEAD  
3/4" x 1/4"

2 TYPICAL INTERIOR WALL  
1/2" x 1/4"

3 RIDGE VENT  
3/4" x 1/4"

4 TYP WINDOW SILL  
3/4" x 1/4"

5 MID DOOR SILL & HEAD  
3/4" x 1/4"

6 INT DOOR JAMB / HEAD  
3/4" x 1/4"

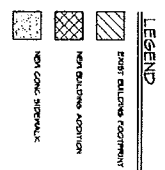
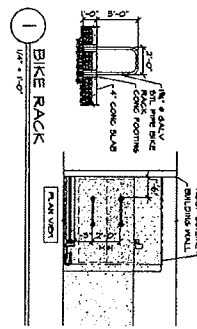
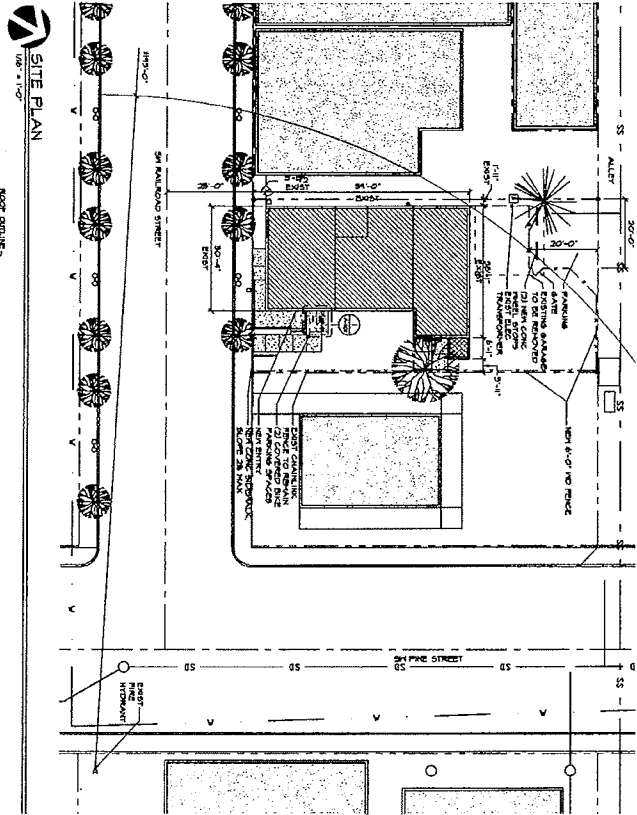
7 WATER TABLE  
3/4" x 1/4"

8 EAVE  
3/4" x 1/4"

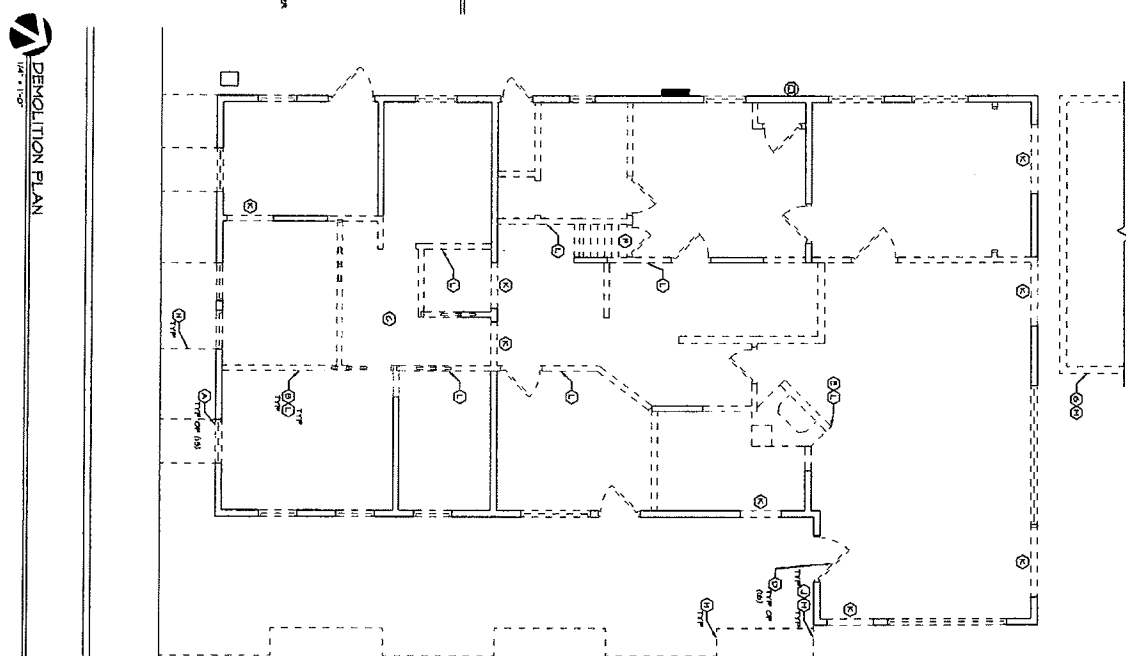
<p>DATE: 08-08-08                  DRAWN BY: A-301K-1000T                  CHECKED BY: BDO                  COMPANY: CARLSON VEIT ARCHITECTS PC                  3095 RIVER ROAD NORTH, SALEM, OREGON 97303</p>	<p>PROJECT: SHERWOOD OLD TOWN DENTAL                  16045 SK RAILROAD STREET                  SHERWOOD, OREGON                  CONTRACT NO:</p>	<p><b>CARLSON VEIT</b>                  ARCHITECTS PC                  ARCHITECTURE • INTERIOR DESIGN                  503-390-0281 • FAX 503-390-2455 • WWW.CARLSONVEIT.COM                  3095 RIVER ROAD NORTH, SALEM, OREGON 97303                  MEMBER AMERICAN INSTITUTE OF ARCHITECTS</p>
	<p>Sheet: A-501</p>	





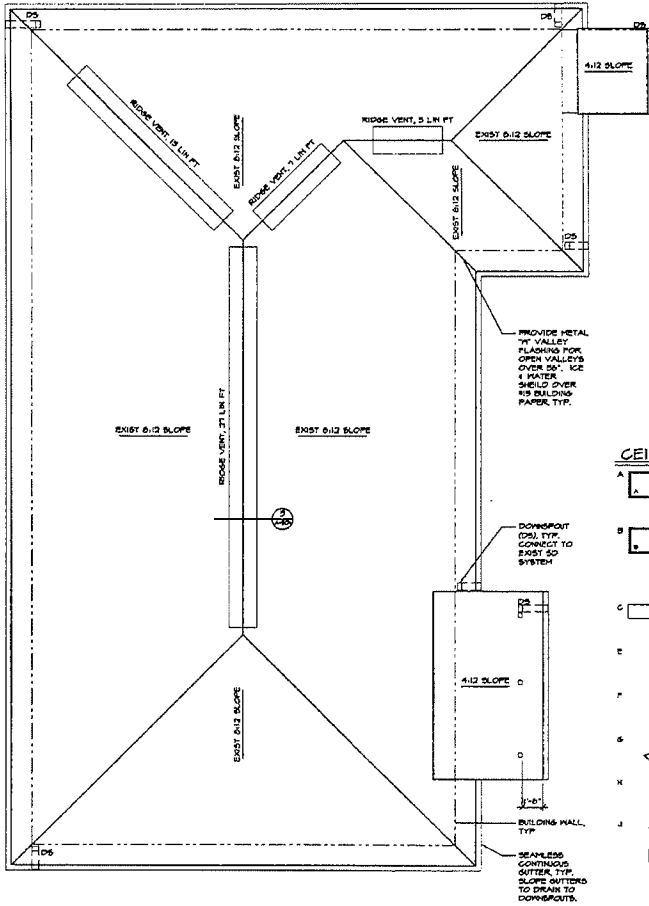


- DEMOLITION NOTES**
- 1 REMOVE REAR PORCH
  - 2 REMOVE HALL
  - 3 REMOVE LOWERED CEILING FINISHING
  - 4 REMOVE DOOR
  - 5 REMOVE INTERIOR SHEETROCK AND PARTIAL
  - 6 REMOVE ATTIC STAIRS
  - 7 REMOVE DAMAGED BUILDING
  - 8 REMOVE CONCRETE DRIVEWAY
  - 9 REMOVE REAR BRICK CONCRETE WALL & CONCRETE
  - 10 REMOVE INTERIOR SHEETROCK
  - 11 REMOVE INTERIOR SHEETROCK
  - 12 REMOVE INTERIOR SHEETROCK
  - 13 REMOVE INTERIOR SHEETROCK
  - 14 REMOVE INTERIOR SHEETROCK
  - 15 REMOVE INTERIOR SHEETROCK
  - 16 REMOVE INTERIOR SHEETROCK
  - 17 REMOVE INTERIOR SHEETROCK
  - 18 REMOVE INTERIOR SHEETROCK
  - 19 REMOVE INTERIOR SHEETROCK
  - 20 REMOVE INTERIOR SHEETROCK
  - 21 REMOVE INTERIOR SHEETROCK
  - 22 REMOVE INTERIOR SHEETROCK
  - 23 REMOVE INTERIOR SHEETROCK
  - 24 REMOVE INTERIOR SHEETROCK
  - 25 REMOVE INTERIOR SHEETROCK
  - 26 REMOVE INTERIOR SHEETROCK
  - 27 REMOVE INTERIOR SHEETROCK
  - 28 REMOVE INTERIOR SHEETROCK
  - 29 REMOVE INTERIOR SHEETROCK
  - 30 REMOVE INTERIOR SHEETROCK
  - 31 REMOVE INTERIOR SHEETROCK
  - 32 REMOVE INTERIOR SHEETROCK
  - 33 REMOVE INTERIOR SHEETROCK
  - 34 REMOVE INTERIOR SHEETROCK
  - 35 REMOVE INTERIOR SHEETROCK
  - 36 REMOVE INTERIOR SHEETROCK
  - 37 REMOVE INTERIOR SHEETROCK
  - 38 REMOVE INTERIOR SHEETROCK
  - 39 REMOVE INTERIOR SHEETROCK
  - 40 REMOVE INTERIOR SHEETROCK
  - 41 REMOVE INTERIOR SHEETROCK
  - 42 REMOVE INTERIOR SHEETROCK
  - 43 REMOVE INTERIOR SHEETROCK
  - 44 REMOVE INTERIOR SHEETROCK
  - 45 REMOVE INTERIOR SHEETROCK
  - 46 REMOVE INTERIOR SHEETROCK
  - 47 REMOVE INTERIOR SHEETROCK
  - 48 REMOVE INTERIOR SHEETROCK
  - 49 REMOVE INTERIOR SHEETROCK
  - 50 REMOVE INTERIOR SHEETROCK
  - 51 REMOVE INTERIOR SHEETROCK
  - 52 REMOVE INTERIOR SHEETROCK
  - 53 REMOVE INTERIOR SHEETROCK
  - 54 REMOVE INTERIOR SHEETROCK
  - 55 REMOVE INTERIOR SHEETROCK
  - 56 REMOVE INTERIOR SHEETROCK
  - 57 REMOVE INTERIOR SHEETROCK
  - 58 REMOVE INTERIOR SHEETROCK
  - 59 REMOVE INTERIOR SHEETROCK
  - 60 REMOVE INTERIOR SHEETROCK
  - 61 REMOVE INTERIOR SHEETROCK
  - 62 REMOVE INTERIOR SHEETROCK
  - 63 REMOVE INTERIOR SHEETROCK
  - 64 REMOVE INTERIOR SHEETROCK
  - 65 REMOVE INTERIOR SHEETROCK
  - 66 REMOVE INTERIOR SHEETROCK
  - 67 REMOVE INTERIOR SHEETROCK
  - 68 REMOVE INTERIOR SHEETROCK
  - 69 REMOVE INTERIOR SHEETROCK
  - 70 REMOVE INTERIOR SHEETROCK
  - 71 REMOVE INTERIOR SHEETROCK
  - 72 REMOVE INTERIOR SHEETROCK
  - 73 REMOVE INTERIOR SHEETROCK
  - 74 REMOVE INTERIOR SHEETROCK
  - 75 REMOVE INTERIOR SHEETROCK
  - 76 REMOVE INTERIOR SHEETROCK
  - 77 REMOVE INTERIOR SHEETROCK
  - 78 REMOVE INTERIOR SHEETROCK
  - 79 REMOVE INTERIOR SHEETROCK
  - 80 REMOVE INTERIOR SHEETROCK
  - 81 REMOVE INTERIOR SHEETROCK
  - 82 REMOVE INTERIOR SHEETROCK
  - 83 REMOVE INTERIOR SHEETROCK
  - 84 REMOVE INTERIOR SHEETROCK
  - 85 REMOVE INTERIOR SHEETROCK
  - 86 REMOVE INTERIOR SHEETROCK
  - 87 REMOVE INTERIOR SHEETROCK
  - 88 REMOVE INTERIOR SHEETROCK
  - 89 REMOVE INTERIOR SHEETROCK
  - 90 REMOVE INTERIOR SHEETROCK
  - 91 REMOVE INTERIOR SHEETROCK
  - 92 REMOVE INTERIOR SHEETROCK
  - 93 REMOVE INTERIOR SHEETROCK
  - 94 REMOVE INTERIOR SHEETROCK
  - 95 REMOVE INTERIOR SHEETROCK
  - 96 REMOVE INTERIOR SHEETROCK
  - 97 REMOVE INTERIOR SHEETROCK
  - 98 REMOVE INTERIOR SHEETROCK
  - 99 REMOVE INTERIOR SHEETROCK
  - 100 REMOVE INTERIOR SHEETROCK



	<p><b>SHERWOOD OLD TOWN DENTAL</b>                  16043 5th RAILROAD STREET                  SHERWOOD, OR                  97139</p>	<p><b>CARLSON VEIT</b>                  ARCHITECTS PC                  ARCHITECTURE • INTERIOR DESIGN                  503-350-0281 • FAX 503-390-5459 • WWW.CARLSONVEIT.COM                  3025 RIVER ROAD NORTH, SALEM, OREGON 97303                  MEMBER AMERICAN INSTITUTE OF ARCHITECTS</p>
	<p>DATE: 08-09-08                  DRAWN: A-101                  CHECKED: BDC                  PROJECT: 08-0001                  SHEET: 11 OF 11                  SCALE: AS SHOWN                  DESIGNED BY: CJC                  DATE: 08-09-08                  DRAWN BY: BDC                  PROJECT: 08-0001                  SHEET: 11 OF 11                  SCALE: AS SHOWN</p>	



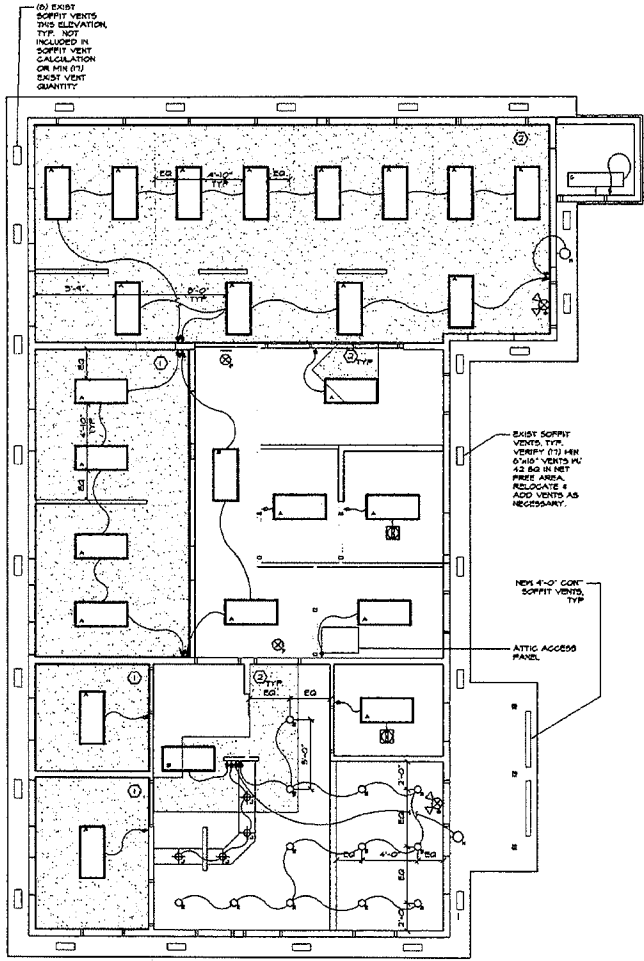


**CEILING LEGEND**

- A 2'-0" x 4'-0" FLUORESCENT LIGHT FIXTURE (F) (2) TO LAMPS, ACRYLIC DIFFUSER, ELEC BALLAST, SURFACE-MOUNTED.
  - B NIGHT LIGHT, SAME AS FIXTURE (A) EXCEPT ONE LAMP ON EMERGENCY BATTERY BACKUP BALLAST TO PROVIDE 1500 LUMENS PER HOUR EMERGENCY MODE AND PROVIDE INSTANT CIRCUIT
  - C 4'-0" LONG, SINGLE IS LAMP, HALL-MOUNTED FLUORESCENT (F) ACRYLIC COVER, ELEC BALLAST.
  - E ○ RECESSED COMPACT FLUORESCENT FIXTURE
  - F ⊗ SELF-ILLUMINATING EXIT LIGHT (F) DIRECTIONAL ARROW
  - G ⊕ SELF-ILLUMINATING EXIT LIGHT (F) EMERGENCY ILLUMINATION
  - H ○ HALL-MOUNTED COMPACT FLUORESCENT EXTERIOR LIGHT, OUT-OFF TYPE
  - J ⊕ DECORATIVE PENDANT FIXTURE
  - ☐ EXHAUST FAN
- NOTE: CENTER FIXTURE IN ROOM UNLESS OTHERWISE NOTED.

**CONSTRUCTION NOTES**

- ① PATCH EXIST CEILING GYP BD, PROVIDE (1) NEW LAYER TYPE 'X' 1/2" GYP BD FOR 1-HR FIRE-RESISTANCE RATING, PER TABLE 1201.10(1) 2-11 SEE DETAIL 1, A-301.
- ② PATCH EXIST CEILING GYP BD TO MATCH ADJACENT, TYP THROUGHOUT.

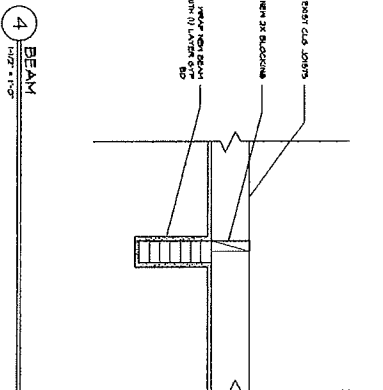
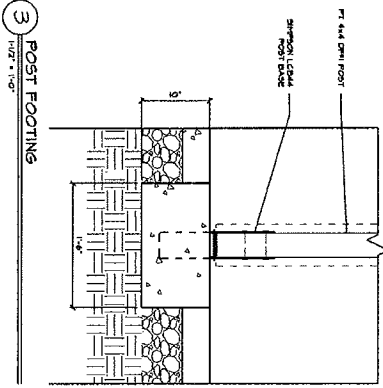
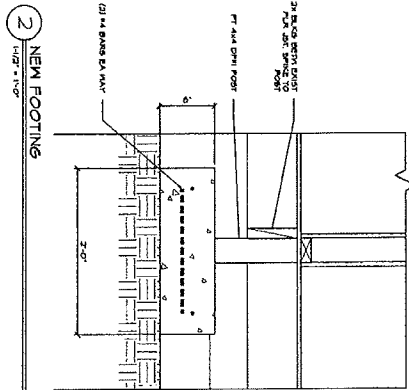
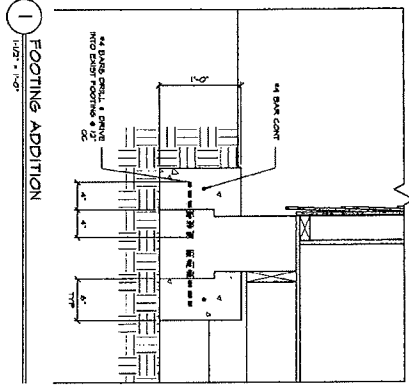


**REFLECTED CEILING PLAN**  
 1/4" = 1'-0"

**CARLSON VEIT ARCHITECTS PC**  
 ARCHITECTURE • INTERIOR DESIGN  
 303.580.0031 • FAX 303.580.2469 • WWW.CARLSONVEIT.COM  
 3045 RIVER ROAD NORTH, SALEM, OREGON 97303  
 MEMBER AMERICAN INSTITUTE OF ARCHITECTS

SHERWOOD OLD TOWN DENTAL  
 1604 B SW RAILROAD STREET  
 SHERWOOD, OREGON 97140

Revisions:  
 ▲  
 ▲  
 ▲  
 Date: 08-08-08  
 Project: 100007  
 Drawing: A-102X-10007  
 Drawn by: BDO  
 Checked by: GDC  
 Copyright © 2008  
 Carlson Veit Architects P.C.  
**REFLECTED CEILING & ROOF PLANS**  
 Sheet: **A-103**  
 of:

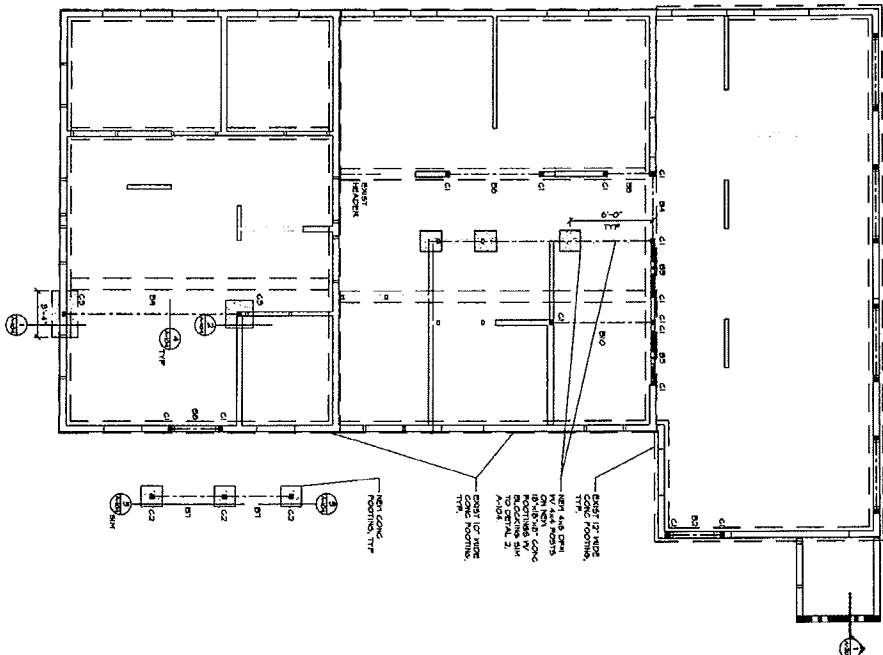


**BEAM SCHEDULE**

MARK	BEAM SIZE
B1	440 2" x 11"
B2	440 2" x 11"
B3	440 2" x 11"
B4	440 2" x 11"
B5	440 2" x 11"
B6	440 2" x 11"
B7	440 2" x 11"
B8	440 2" x 11"
B9	440 2" x 11"
B10	440 2" x 11"

**COLUMN & FOOTING SCHEDULE**

MARK	COLUMN SIZE	FOOTING SIZE	TYPE	REMARKS
C1	24" x 24" x 2'	8' x 8' x 12" CONC. S&C	1'	(2) 14 BARS OC
C2	24" x 24" x 2'	8' x 8' x 12" CONC. S&C	1'	(2) 14 BARS OC
C3	24" x 24" x 2'	8' x 8' x 12" CONC. S&C	1'	(2) 14 BARS OC
C4	24" x 24" x 2'	8' x 8' x 12" CONC. S&C	1'	(2) 14 BARS OC
C5	24" x 24" x 2'	8' x 8' x 12" CONC. S&C	1'	(2) 14 BARS OC
C6	24" x 24" x 2'	8' x 8' x 12" CONC. S&C	1'	(2) 14 BARS OC
C7	24" x 24" x 2'	8' x 8' x 12" CONC. S&C	1'	(2) 14 BARS OC
C8	24" x 24" x 2'	8' x 8' x 12" CONC. S&C	1'	(2) 14 BARS OC
C9	24" x 24" x 2'	8' x 8' x 12" CONC. S&C	1'	(2) 14 BARS OC
C10	24" x 24" x 2'	8' x 8' x 12" CONC. S&C	1'	(2) 14 BARS OC



STRUCTURAL PLAN

<p>DATE: 08-08-09                  PROJECT: 10007                  DRAWN BY: A-102X-10007                  CHECKED BY: BDD                  DESIGNED BY: BDD                  PROJECT NO: 10007                  SHEET NO: 10007                  SCALE: AS SHOWN                  DRAWN BY: BDD                  CHECKED BY: BDD                  DESIGNED BY: BDD                  PROJECT NO: 10007                  SHEET NO: 10007                  SCALE: AS SHOWN</p>	<p><b>SHERWOOD OLD TOWN DENTAL</b>                  16043 SW RAILROAD STREET                  SHERWOOD, OREGON 97140                  CONSULTANTS:</p>	<p><b>CARLSON VEIT</b>                  ARCHITECTS P.C.                  ARCHITECTURE • INTERIOR DESIGN                  503-336-0281 • FAX 503-336-2459 • WWW.CARLSONVEIT.COM                  3095 RIVER ROAD NORTH, SALEM, OREGON 97303                  MEMBER AMERICAN INSTITUTE OF ARCHITECTS</p>
	<p>DETAILS                  A-104</p>	