



RESOLUTION 2013-046

ESTABLISHING TWO (2) RESIDENTIAL PARKING DISTRICTS WITHIN THE CITY OF SHERWOOD IN ACCORDANCE WITH CHAPTER 10 OF THE SHERWOOD MUNICIPAL CODE

WHEREAS, the City allows for the creation of Residential Parking Districts in Chapter 10 of the Municipal Code; and

WHEREAS, the City Manager has identified the need for the districts by evaluating the residential nature within the district, the volume of traffic and available parking, the surface width of the streets within the proposed district, the relationship between the need for parking space by residents of the proposed district and the need for parking by the public at large and the hours of the day and night when use of parking within the proposed district is necessary or most convenient; and

WHEREAS, both City staff and residents have identified livability issues caused by non-residential parking within the proposed district

NOW, THEREFORE, THE CITY OF SHERWOOD RESOLVES AS FOLLOWS:

Section 1. The City Manager is authorized to establish the following Residential Parking Districts in accordance with Chapter 10 of the Municipal Code:

- Woodhaven Phase 1, which includes SW Dow Drive north from SW Woodhaven Drive to the 90° left/west turn; SW Woodhaven Drive east from SW Verdant Terrace to SW Saunders Drive; SW Saunders Drive south to SW Villa Road; SW Villa Road west to SW Verdant Terrace; SW Verdant Terrace north to SW Woodhaven Drive; SW Kinglet Drive from SW Verdant Terrace to SW Saunders Drive; SW Carlson Street from SW Verdant Terrace to SW Saunders Drive. (See Attached Woodhaven Phase 1 map, with area highlighted)
 - Woodhaven Phase 1 will prohibit non-permitted parking on all school days between the hours of 7:00am and 3:00pm.
- Smock Street from SW Sherk Place west to the end of the street at Snyder Park. (See Attached Smock St. map, with area highlighted)
 - Smock Street will prohibit non-permitted parking seven (7) days a week, 24-hours a day.

Section 2. This Resolution shall be effective upon its approval and adoption.

Duly passed by the City Council this 20th day of August 2013.

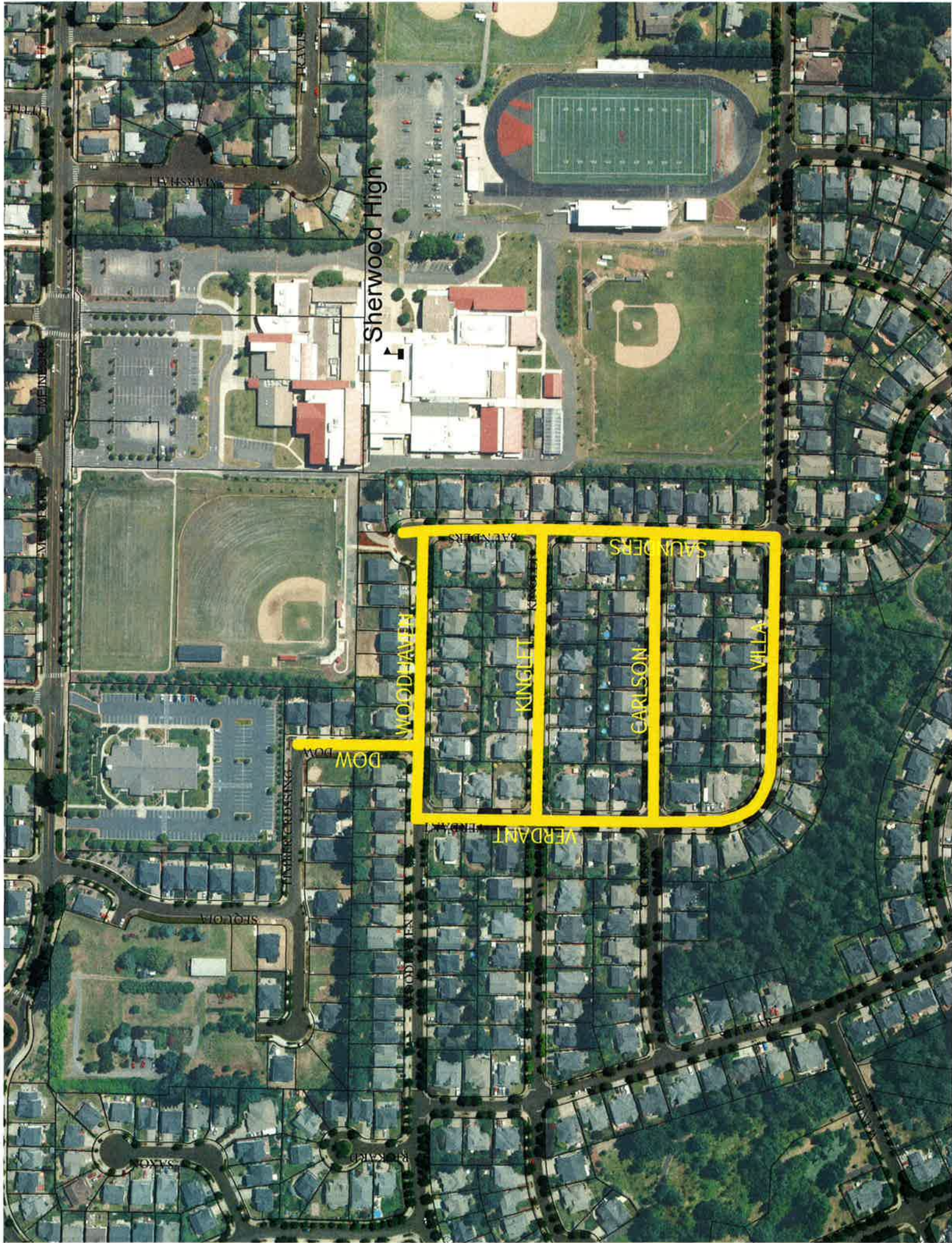


Bill Middleton, Mayor

Attest:



Sylvia Murphy, CMC, City Recorder



Sherwood High

WOODHAVEN

KINGLET

CARLSON

VILLA

VERDANT

SAUNDERS

DOW

SAVOY

STOLCRA

THREPERDISING

STODDEN

INDIAN

SAUNDERS

MARSHALL

TRAVIS

WINE

WINE

WINE

WINE

WINE

WINE

