

City of Sherwood, Oregon
Resolution No. 95-599

A RESOLUTION AUTHORIZING THE STOP SIGNING OF DIVISION STREET WEST BOUND AND STOP/RIGHT TURN WITHOUT STOPPING SIGNING OF PARK ROW STREET SOUTH BOUND AND ESTABLISHING AN EFFECTIVE DATE.

WHEREAS, the City Council having received and considered the testimony of the City Engineer requesting a stop sign at Division Street West Bound and a stop/right turn without stopping sign at Park Row South Bound.


NOW, THEREFORE, THE CITY RESOLVES AS FOLLOWS:

Section 1. Signing: Division Street at its intersection with Park Row Street is hereby made a stop street and shall be signed such in West direction, and Park Row Street at its intersection with Division street is hereby made a stop/right turn without stopping, thereby creating a major traffic flow along Division - Park Row - Willamette Streets.


Section 2. Change Authorized: The City Manager is directed to cause standard traffic signs to be installed as necessary to carry out the foregoing provisions.

Section 3. Effective Date: This Resolution shall become effective upon adoption.

Duly passed by the City Council this 10th day of January 1995.


Walter Hitchcock, Mayor

Attest:



James H. Rapp
City Manager/Recorder



PUBLIC WORKS DEPARTMENT
540 N.W. Washington Street
Sherwood, Oregon 97140
625-5722 • FAX 625-0620

December 16, 1994

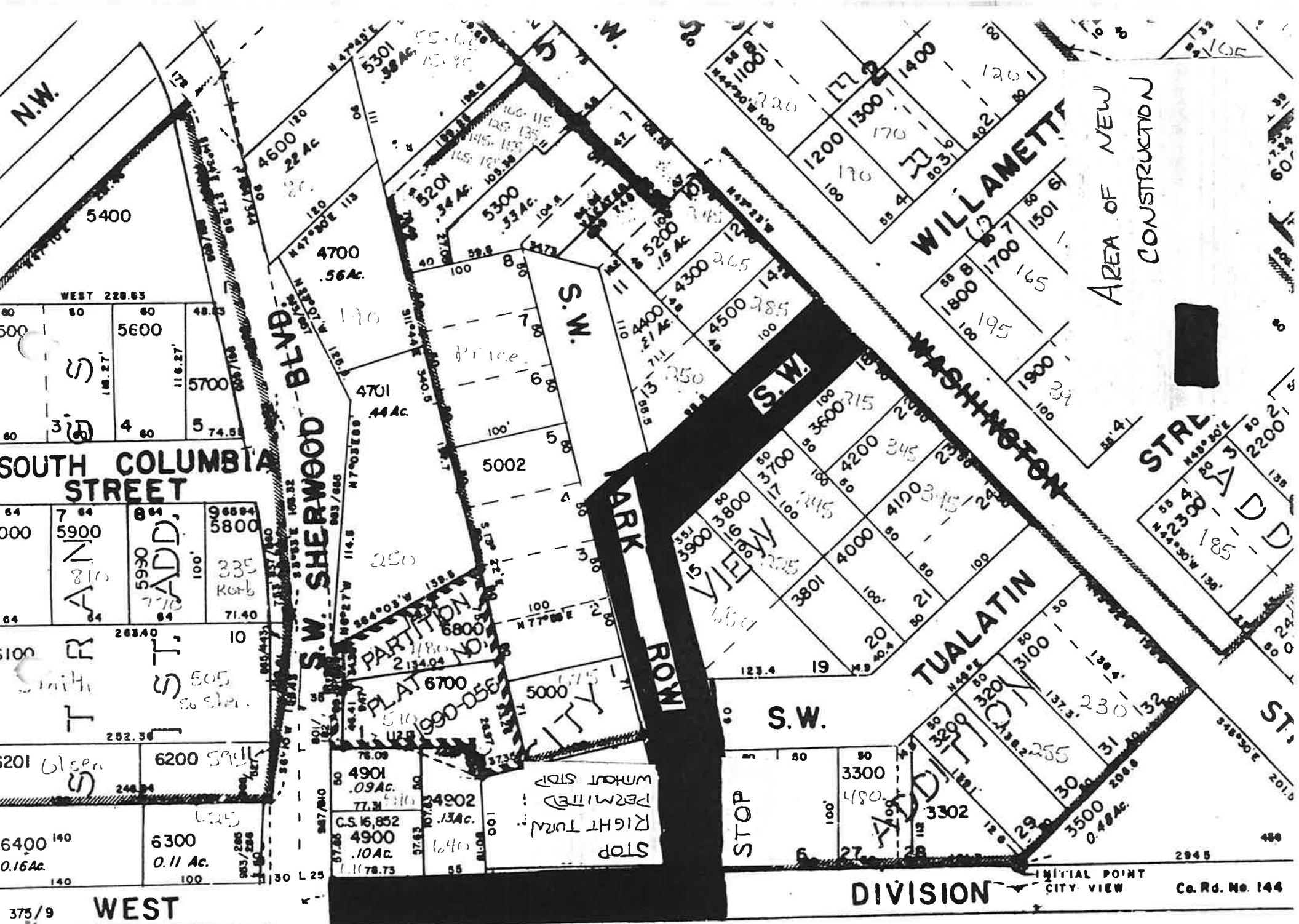
From: Ron Hudson, City Engineer 

To: City Council

Via: Jim Rapp, City Manager 

RE: Traffic flow and signing for Division-Park Row-Willamette Streets

1. We recently completed the construction of streets and sidewalks from South Sherwood Blvd. to Washington Street on Division-Park Row-Willamette Streets. This construction has created a new primary traffic flow. Previously Division Street was a through street with a stop sign on Park Row. Now the traffic flow should dictate that Division-Park Row-Willamette Streets would be the through street with the west bound traffic on Division Street being required to stop. I recommend the signing be changed as shown on the attached drawing.



SEE MAP 25 1 32CA*