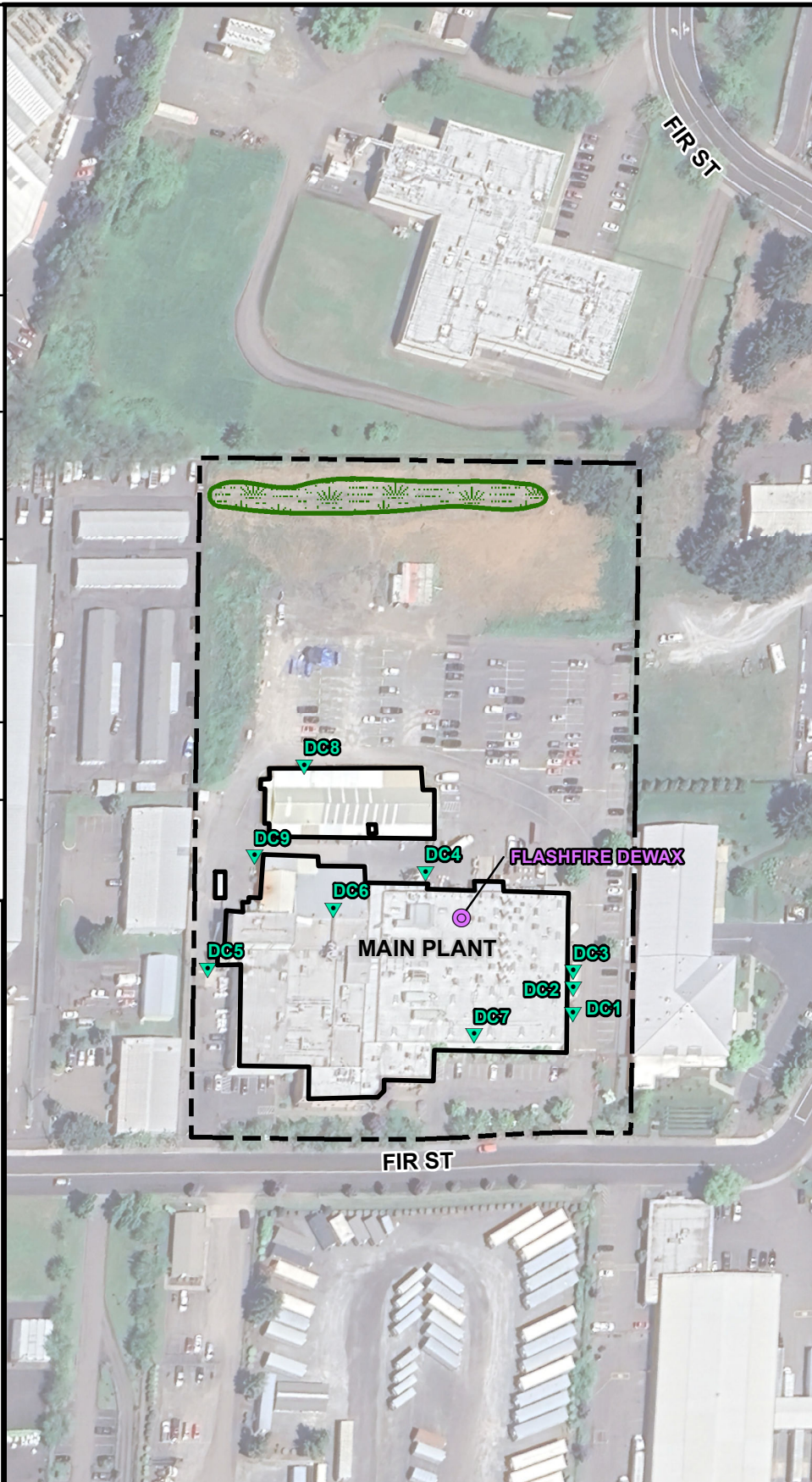




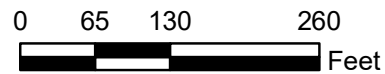


DRAWN BY H. ROMER	CHECKED BY E. BRUGGEMAN	APPROVED BY L. GREEN	DRAWING NUMBER 1827-23001(V05)
6/12/2025	6/12/2025	6/12/2025	



LEGEND:

-  SUBJECT PROPERTY BOUNDARY
-  SUBJECT BUILDING
-  DUST COLLECTOR
-  EMISSION CONTROL



NOTES:

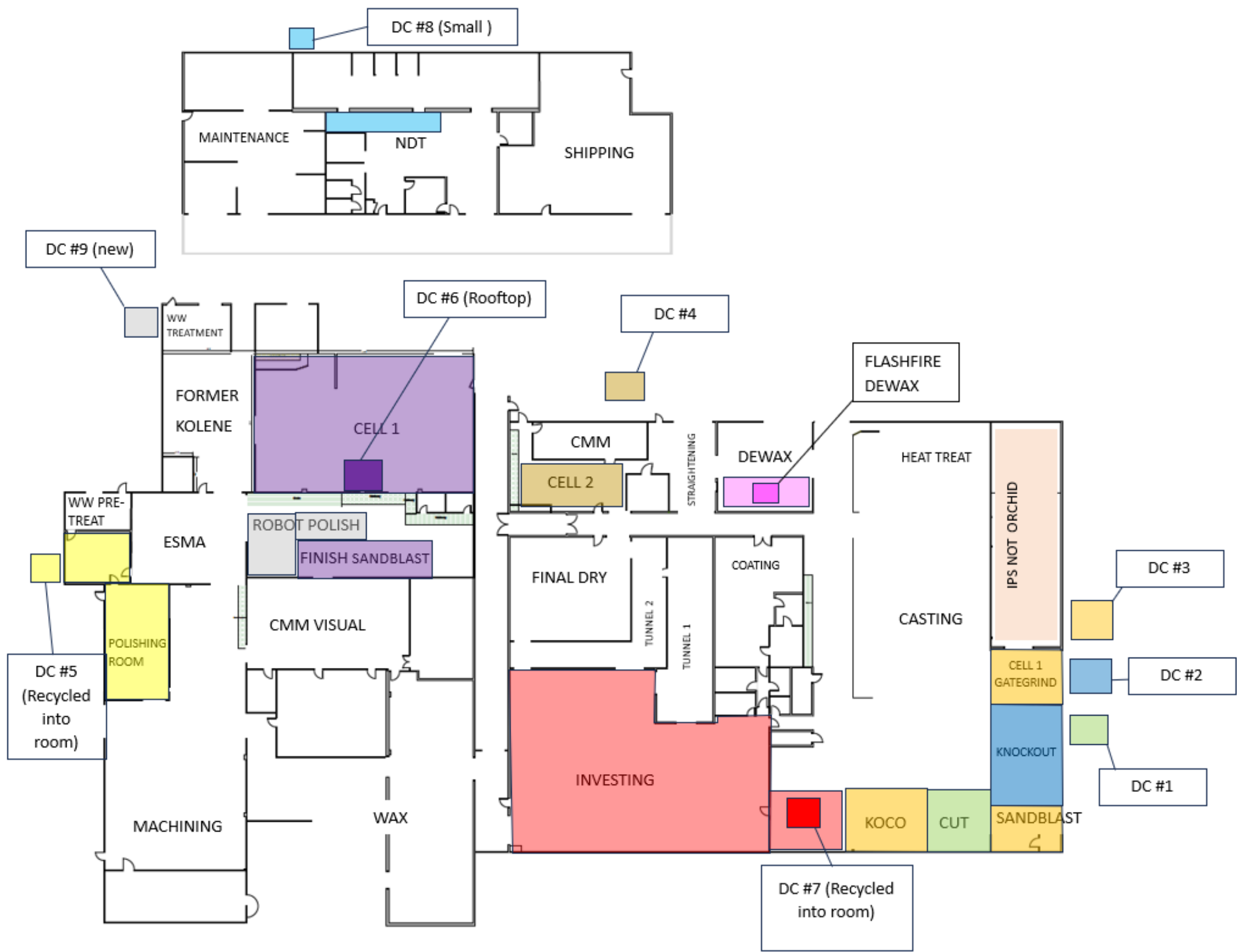
1. BASE MAP DEVELOPED FROM AN AERIAL PHOTO (2023) AND ENW FIELD NOTES.
2. ALL BUILDING, STREET, AND FEATURE LOCATIONS ARE APPROXIMATE.
3. SYMBOLS REPRESENT LOCATION AND DO NOT ALWAYS REPRESENT EXACT SHAPE, SIZE, OR ORIENTATION



**FIGURE 2
SITE PLAN**

**ORCHID ORTHOPEDIC
13963 FIR STREET
OREGON CITY, OREGON**

1827-23001(V07)
 DRAWING NUMBER
 DRAWN BY M. FERRY 6/17/2025
 CHECKED BY L. SIMMONS 6/17/2025
 APPROVED BY L. GREEN 6/17/2025



LEGEND:

NOTES:

1. SITE DRAWING PROVIDED BY ORCHID ORTHOPEDIC
2. SYMBOLS AND SHADING REPRESENT LOCATION BUT DO NOT ALWAYS REPRESENT EXACT SHAPE, SIZE, OR ORIENTATION
3. AREAS OF EMISSION CONTROLS ARE COLOR-CODED TO MATCH THEIR CONTROL DEVICE

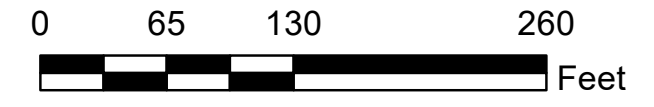


FIGURE 3
PROCESS AND EMISSION CONTROL AREAS
 ORCHID ORTHOPEDIC
 13963 FIR STREET
 OREGON CITY, OREGON