

FIGURE 6-1 Groundwater Sample Locations

NORTHWEST PIPE COMPANY
PORTLAND, OREGON

LEGEND

- Monitoring Well Location Northwest Pipe Company
- Monitoring Well Location Terminal 4 Slip
- ◆ Sept, 2007 Geoprobe

Note - Metro 2005 and 2006 Aerials

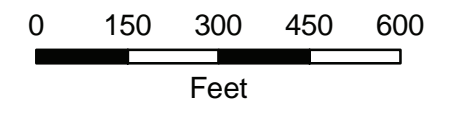
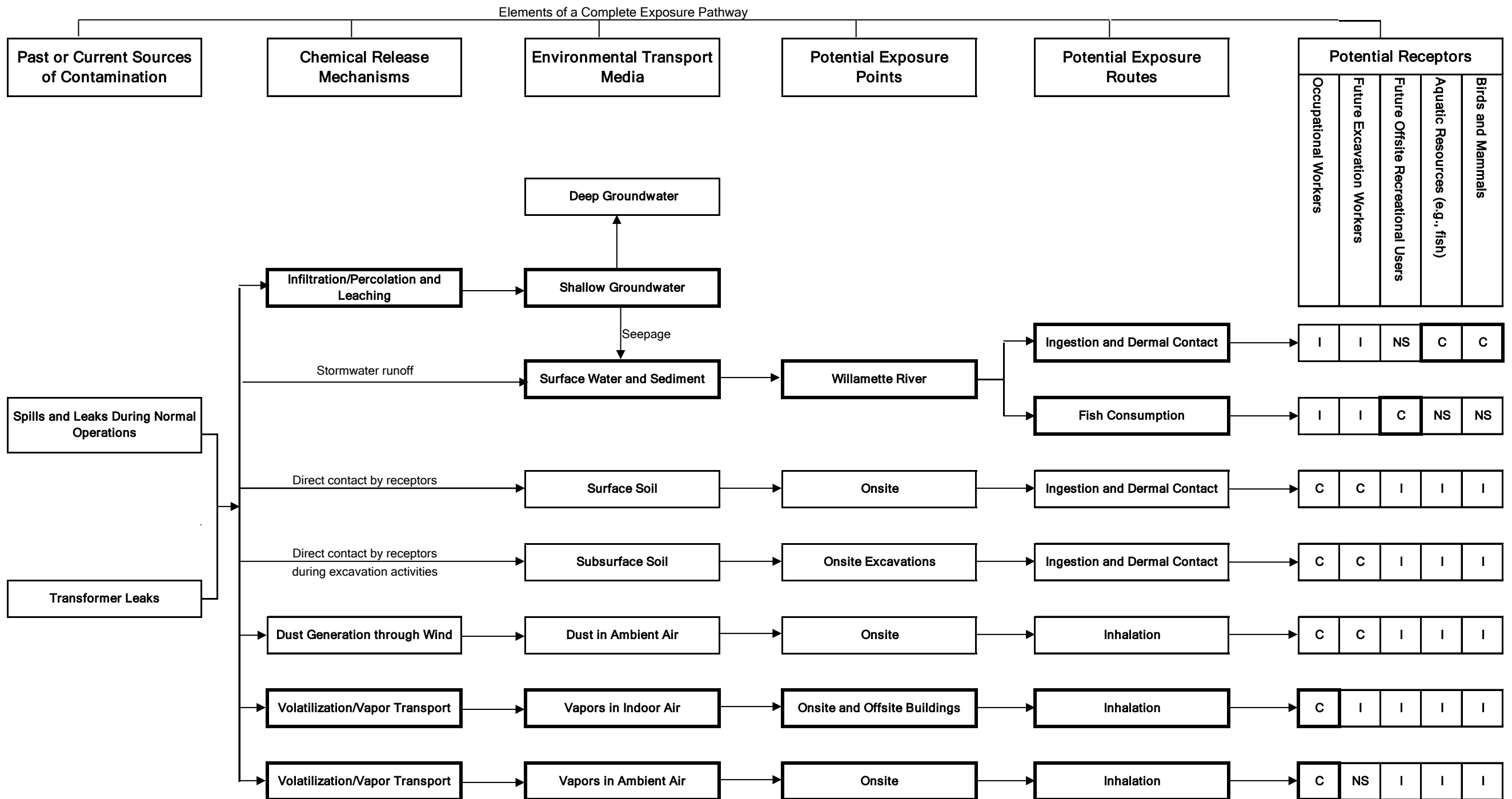
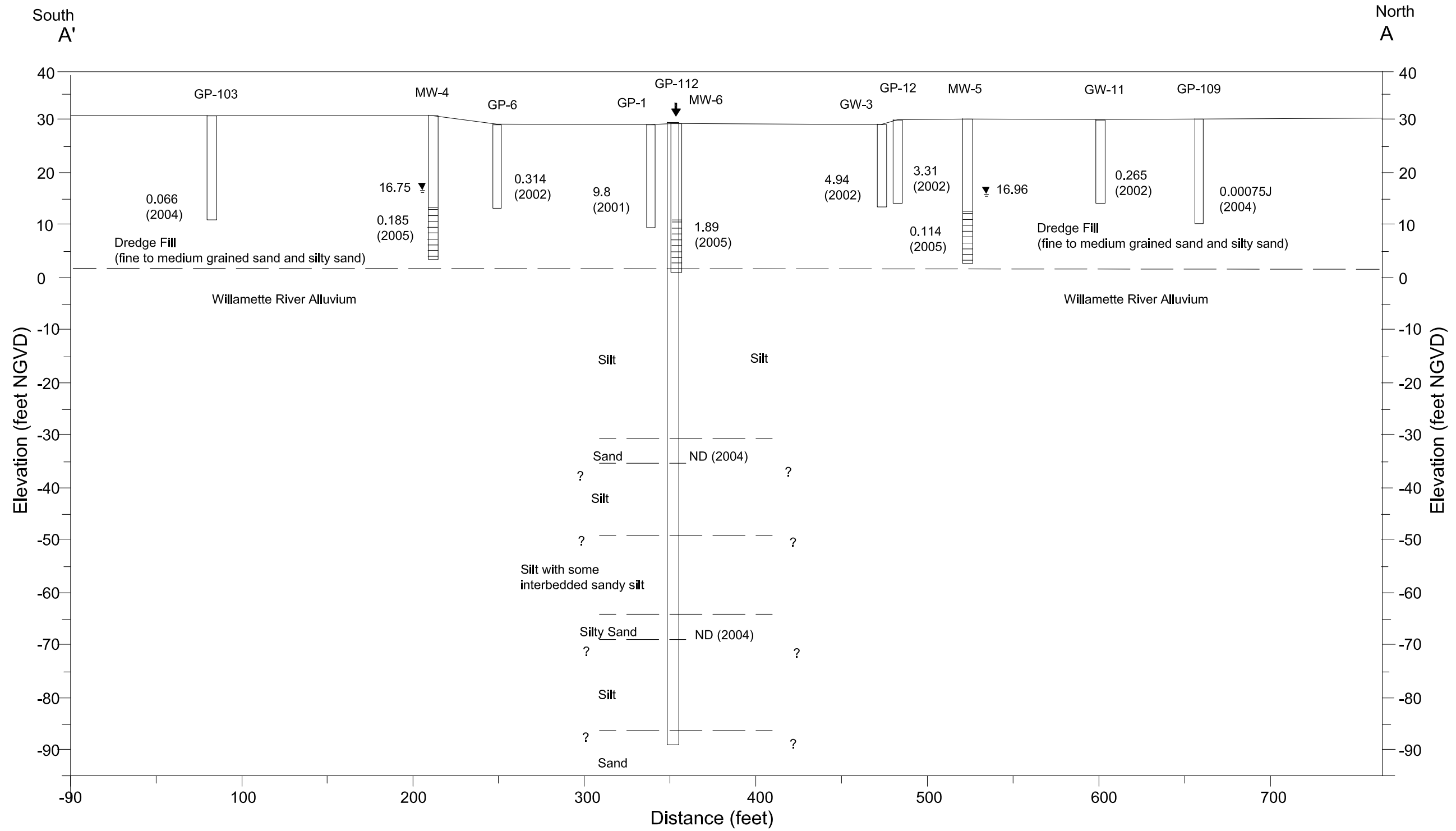


Figure 6-2
Conceptual Site Model for Human Health and Ecological Exposure Pathways
Northwest Pipe, Portland, Oregon



Notes:
 C = Potentially complete pathway
 I = Incomplete pathway
 NS = Potentially complete; not significant exposure pathway
 Bold pathways indicate those evaluated for the groundwater risk screening



Legend

Vertical Exaggeration = 3X

Horizontal Scale
1 inch = 60 feet

Elevation is relative to 1929 National Geodetic Vertical Datum (NGVD)

▼ Water level on January 11, 2005

0.25 (2004) PCE concentration mg/L (Year)

ND not detected above reporting limit

J estimated concentration

Geoprobe

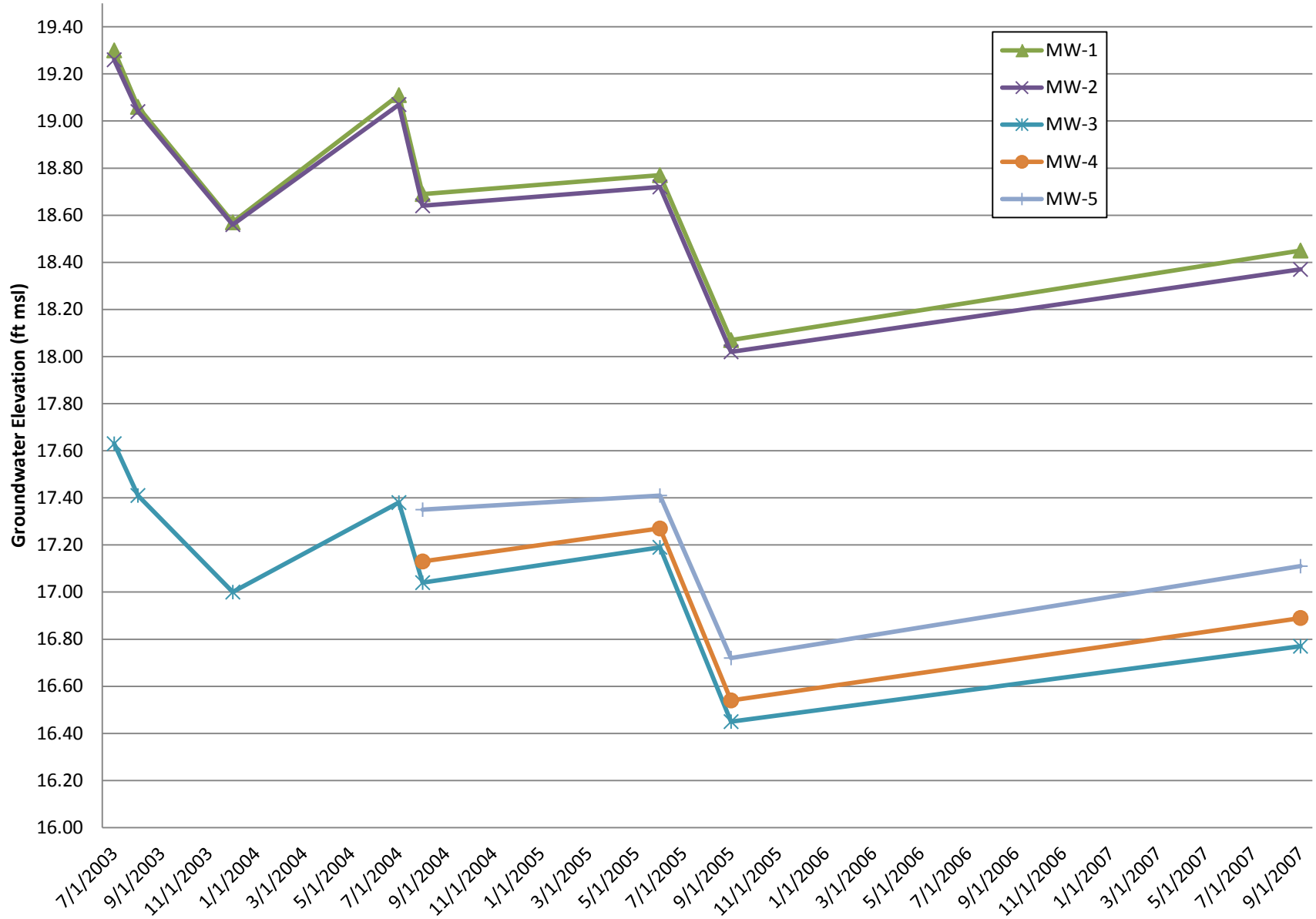
Monitoring Well

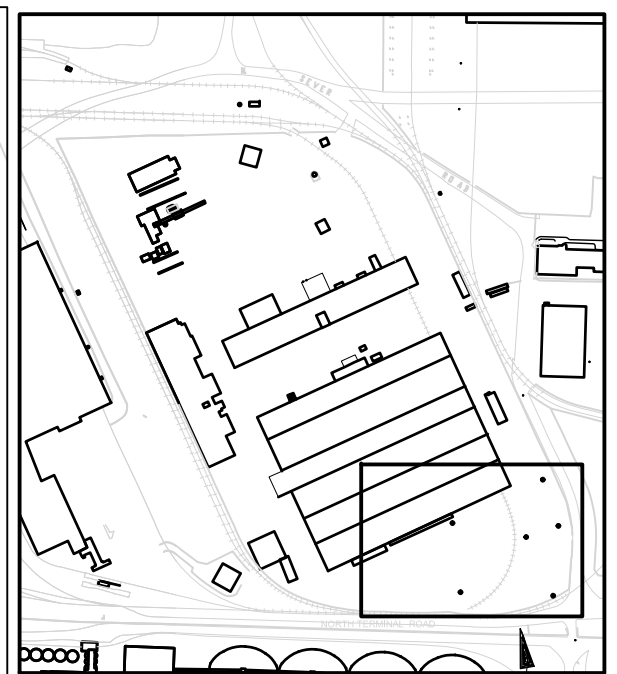
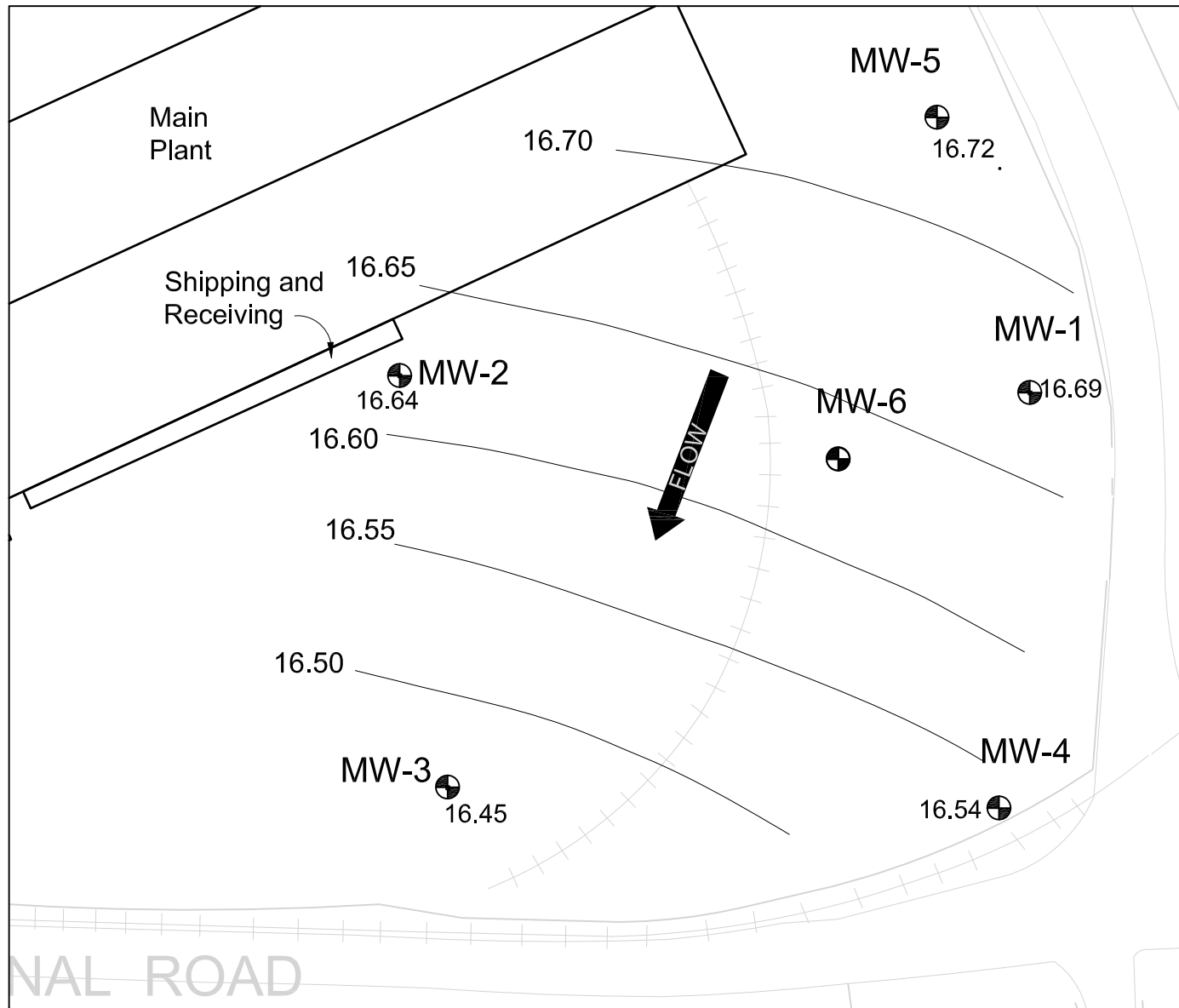
← Screened Interval

Figure 6-3
Southeast Area Cross Section
 NORTHWEST PIPE COMPANY
 PORTLAND, OREGON

Figure 6-4

Groundwater Levels in Southeast Area Monitoring Wells





LEGEND:




- MW-3  Monitoring well location and well ID
- 17.30 Groundwater elevation (feet) measured on September 21, 2005
- 17.2  Groundwater elevation contour with elevation
- Contour interval = 0.05 foot
-  Groundwater flow direction for September 21, 2005

FIGURE 6-5
SOUTHWEST AREA GROUNDWATER
CONTOUR MAP
 September 21, 2005

NORTHWEST PIPE COMPANY
 PORTLAND, OREGON



SCALE IN FEET

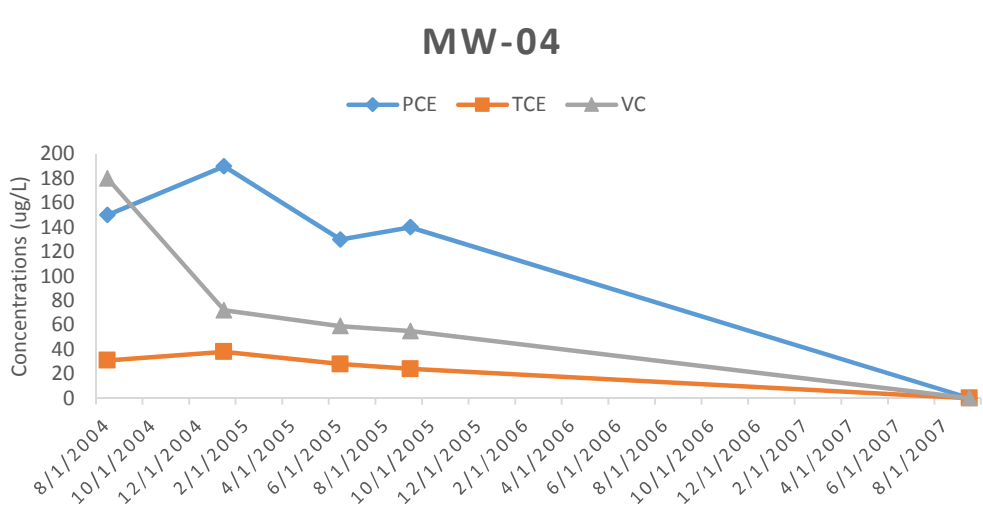
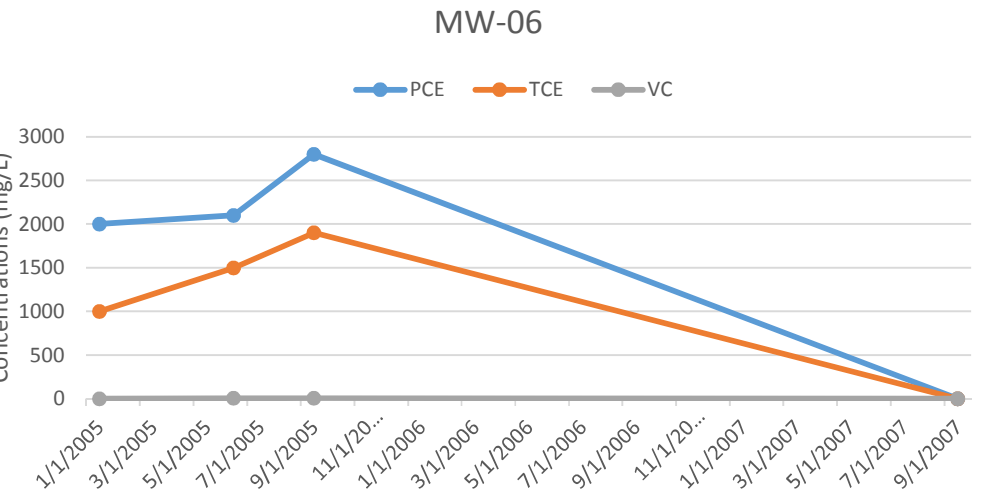
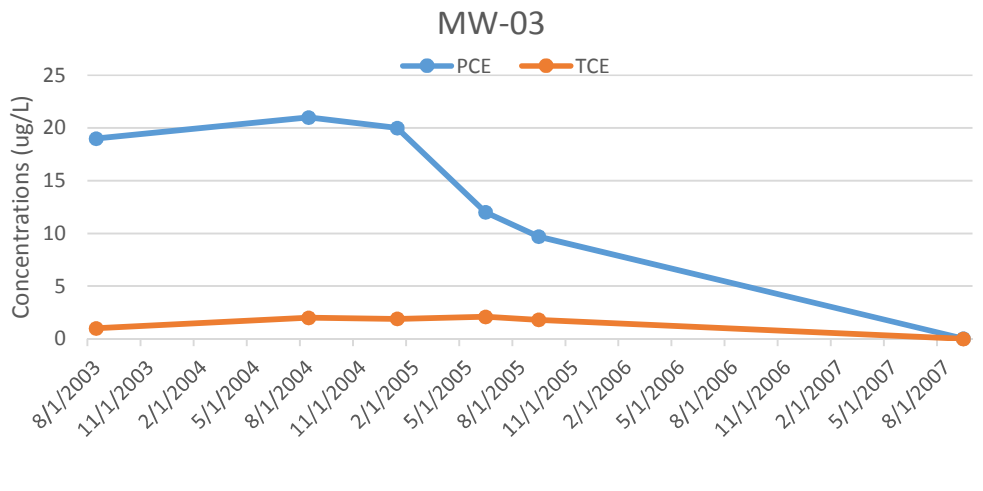
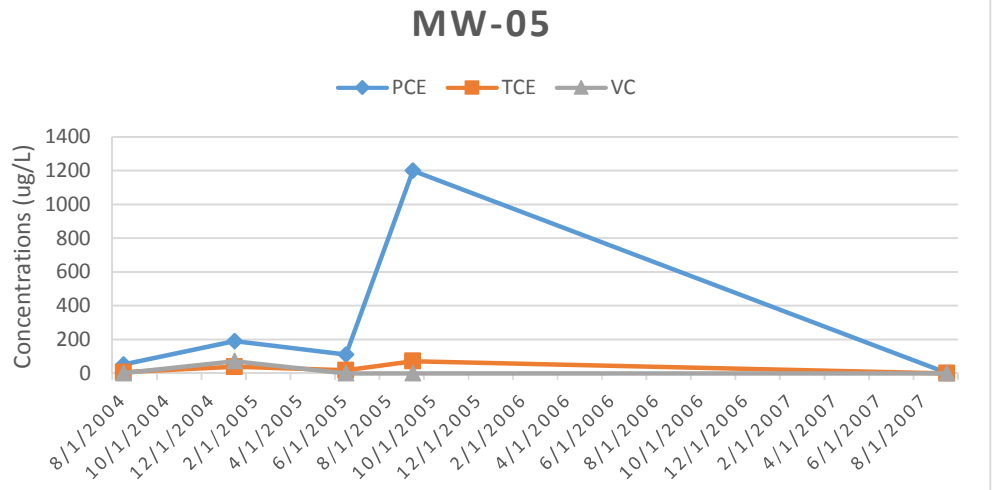
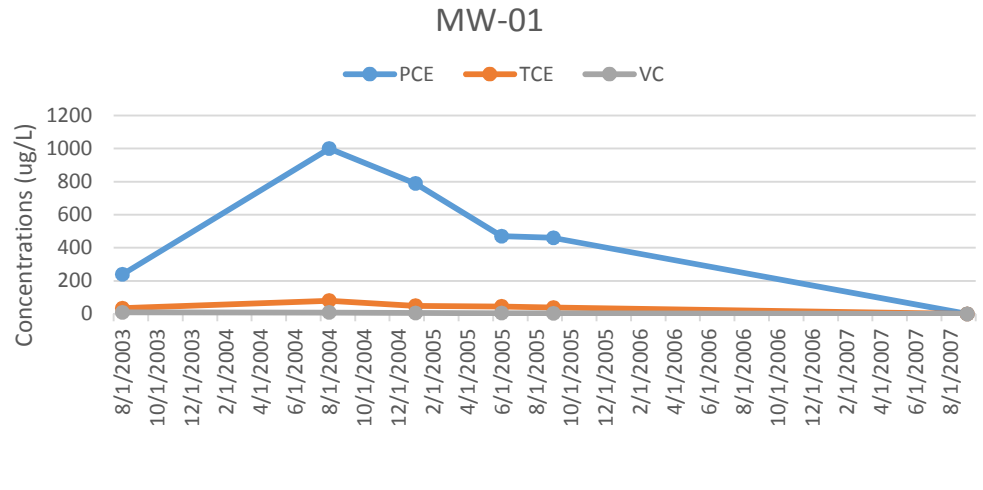


Figure 6-6
 On-Site Groundwater VOC
 Concentrations Over Time
 Northwest Pipe Company