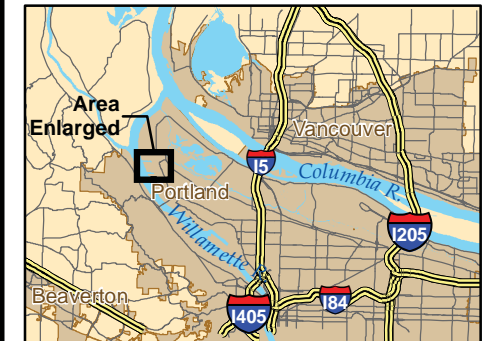
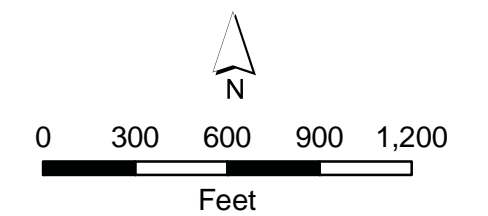


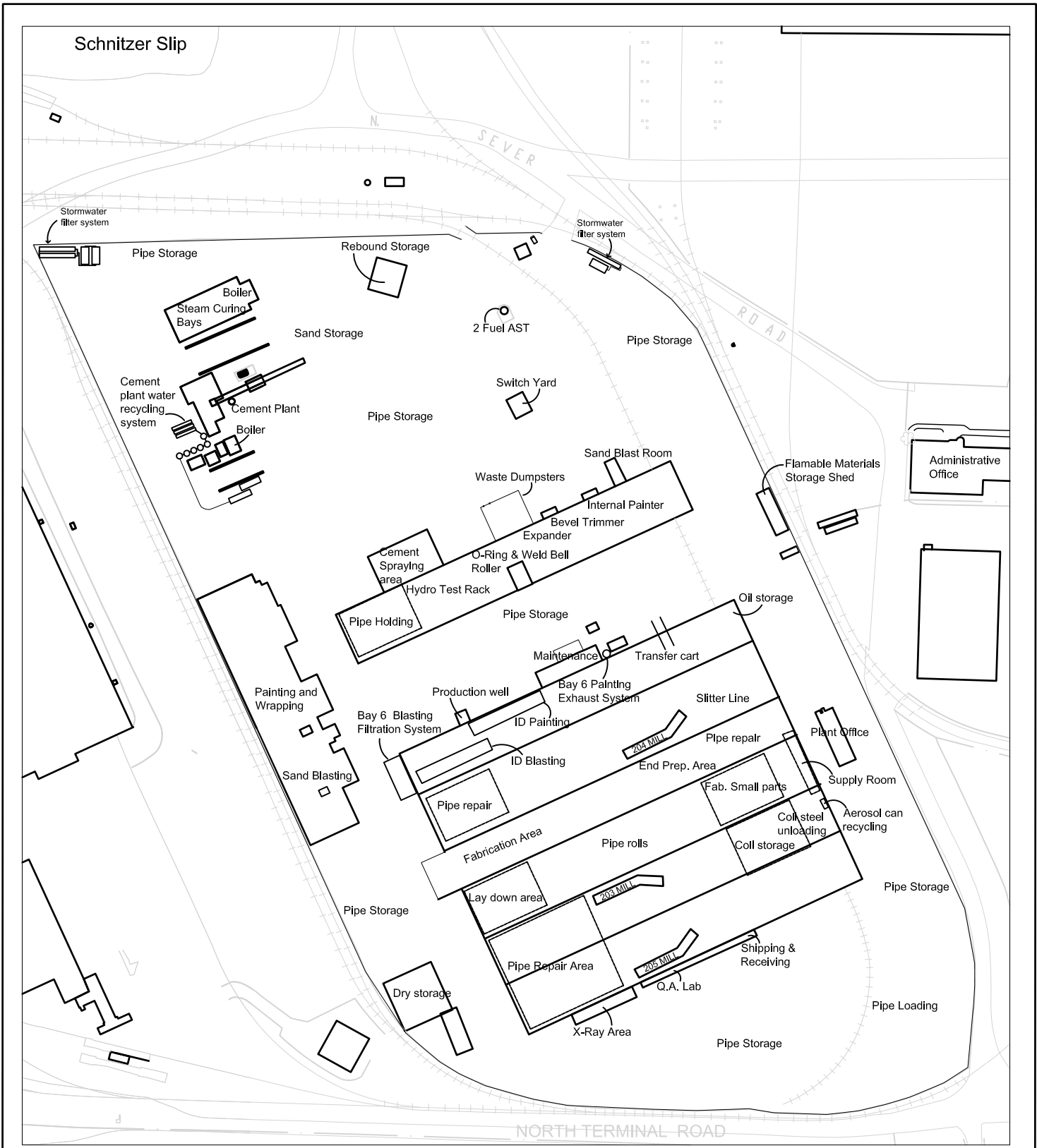
Figure 2-1
Site Location
 Northwest Pipe Company
 Portland, Oregon



Legend

 Northwest Pipe Site Boundary





NOTE: The facility is a "job Shop" and utilizes equipment as needed for specific orders. Not all equipment or operations presented in this figure are used full time but rather are run on an as needed basis.

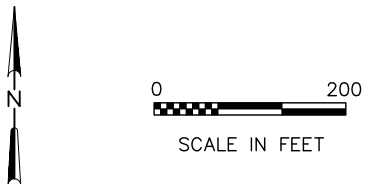


FIGURE 2-3
Industrial Activity
 NORTHWEST PIPE COMPANY
 PORTLAND, OREGON



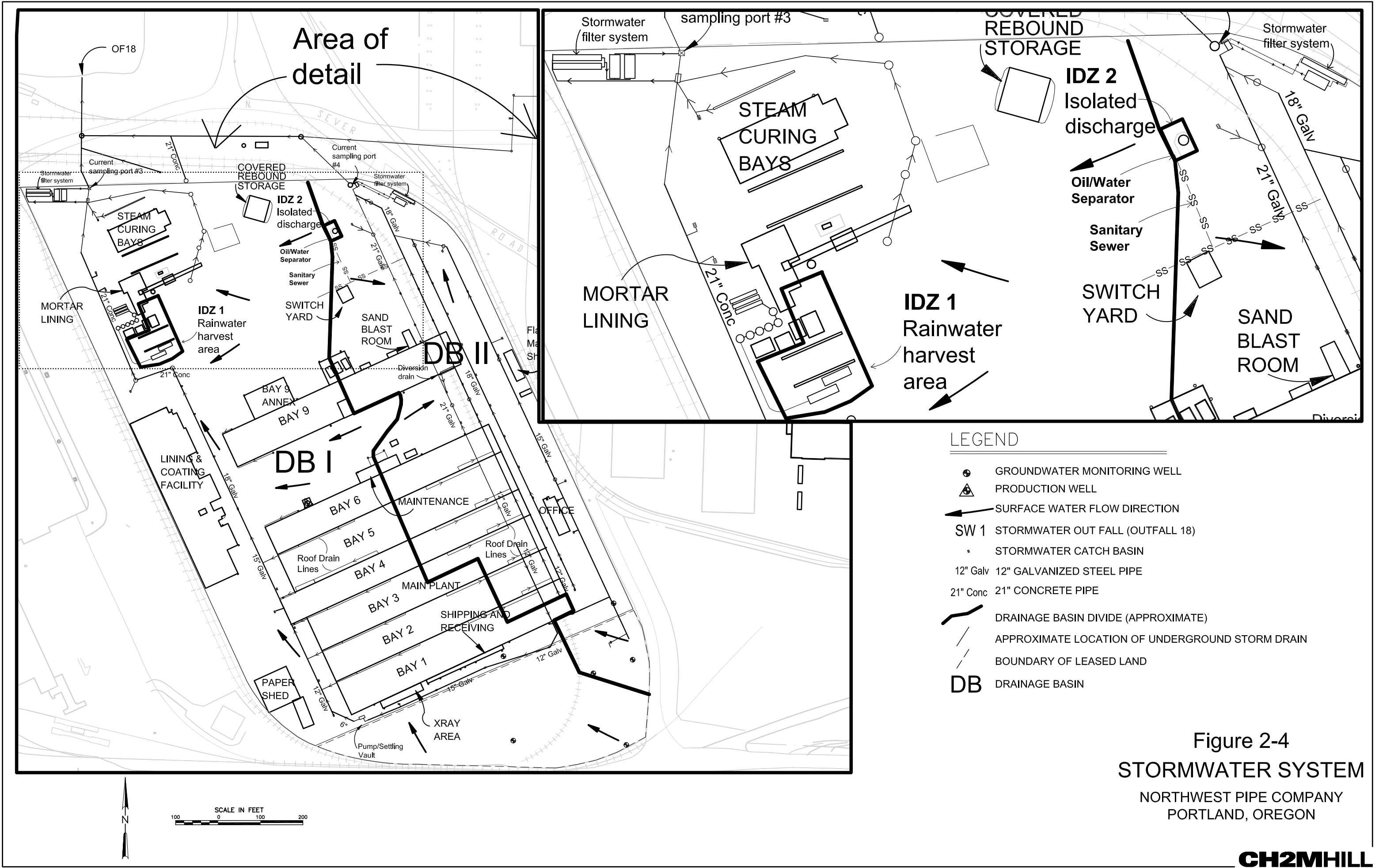
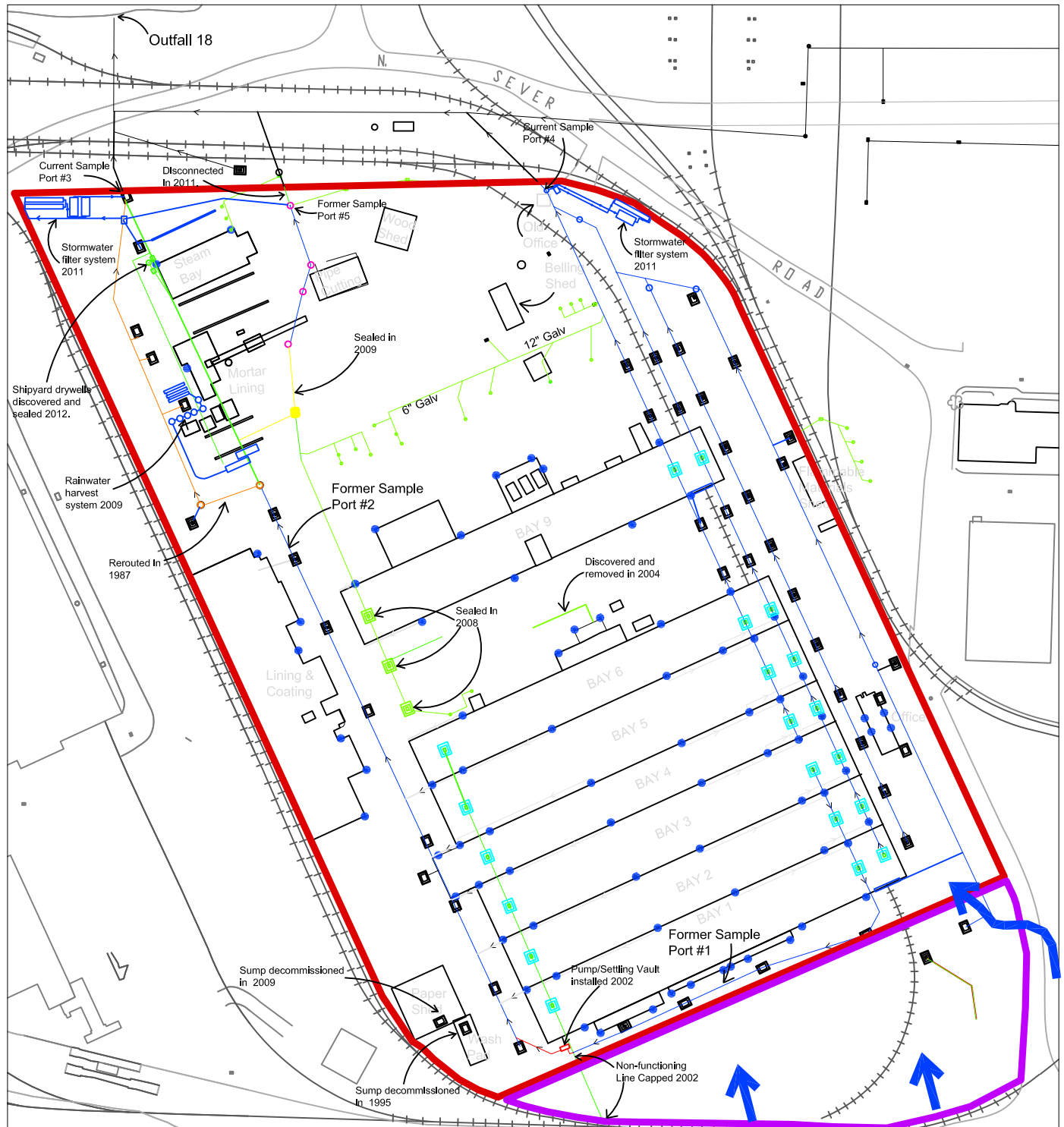


Figure 2-4
STORMWATER SYSTEM
 NORTHWEST PIPE COMPANY
 PORTLAND, OREGON



- Legend**
- Northwest Pipe Company Property boundary
 - Leased Property
 - Historical shipyard drain lines no longer functioning
 - Current functioning stormwater drain lines
 - Functioning off-site stormwater drain lines
 - Stormwater feature modified in 1987
 - Stormwater feature installed in 2002
 - Stormwater feature installed prior to 1983 and abandoned in 2009
 - Stormwater roof drain
 - Stormwater catch basin
 - Stormwater catch basin sealed 2002-2008
 - Stormwater feature installed prior to 1983 and modified in 1991
 - ➔ Stormwater run-on from off site locations

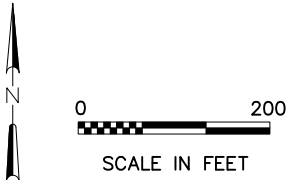


Figure 2-5
Historical Stormwater Features
 NORTHWEST PIPE COMPANY
 PORTLAND, OREGON



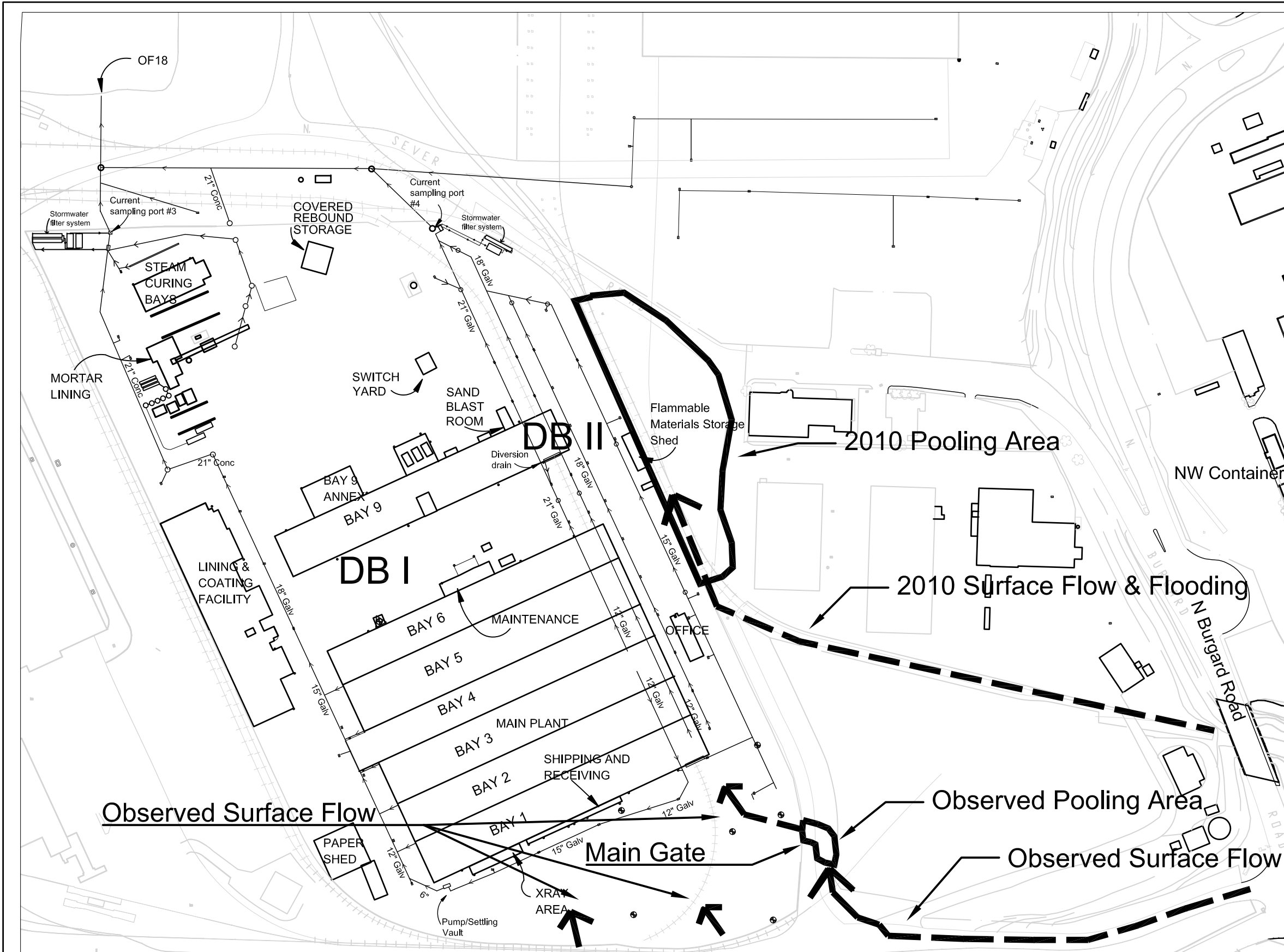


Figure 2-6
 STORMWATER RUN-ON
 NORTHWEST PIPE COMPANY
 PORTLAND, OREGON