

LEGEND

- Groundwater Elevation Contour (0.5 ft contour interval, ft NGVD29)
- Groundwater Elevation Contour (0.05 ft contour interval, to show detail in the NW Pipe Southeast Area, ft NGVD29)
- Groundwater Flow Direction

Investigation Wells

- Groundwater Quality Monitoring
- Water Level Only
- Northwest Pipe Site Boundary

Note: Groundwater levels measured between 9:30 AM and 11:10 AM on October 25, 2016. During this period, the Willamette River stage decreased by 0.27 foot, as measured at the Broadway Bridge river gauge (USGS 14211720).

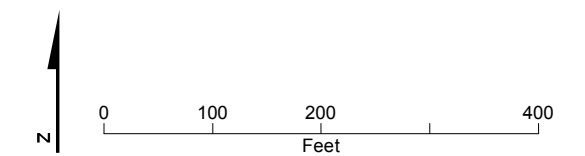
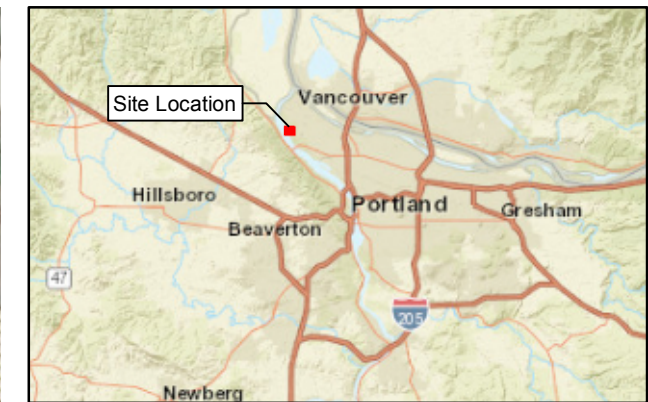
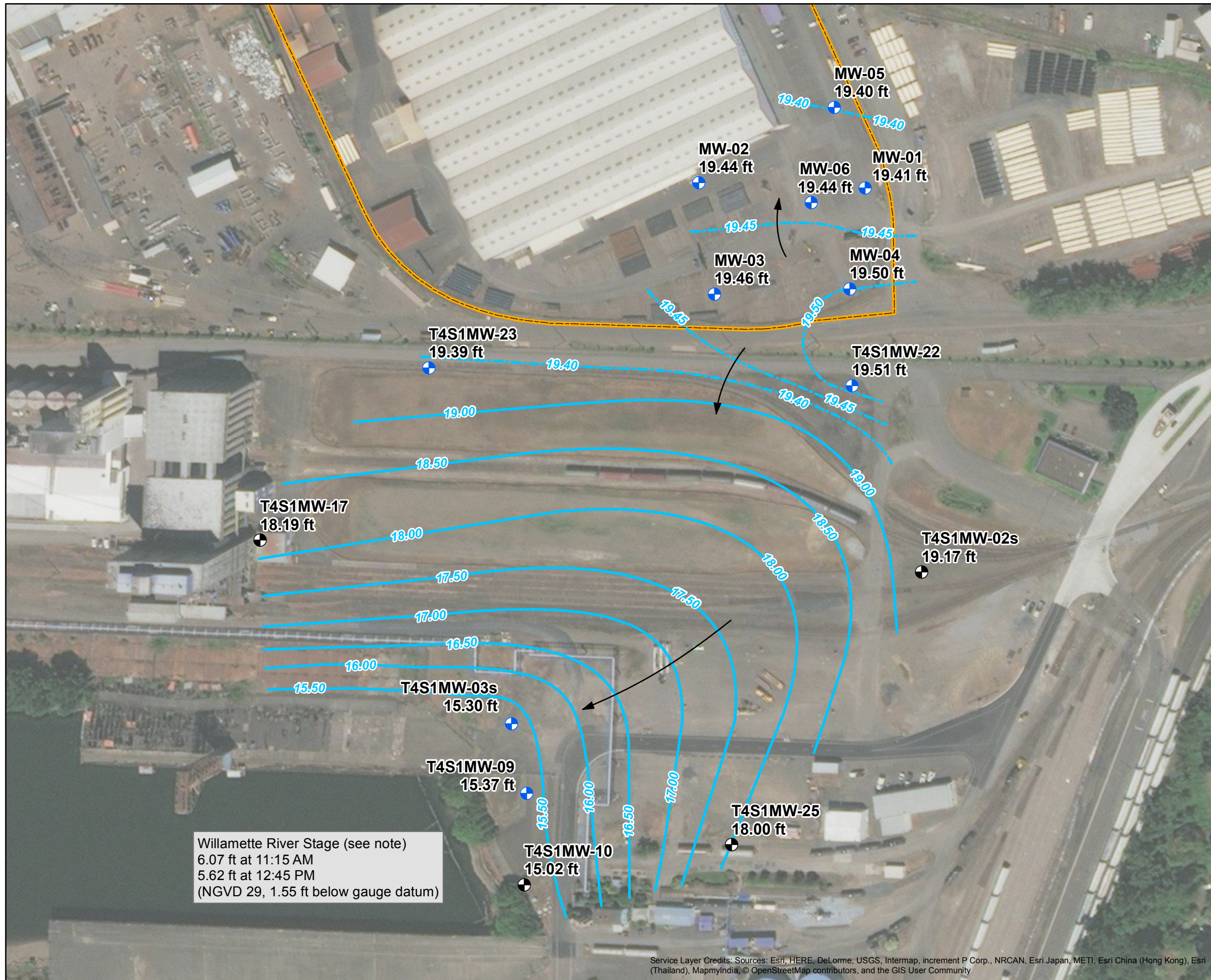


FIGURE 1
Groundwater Elevation Contour Map
October 25, 2016

Supplemental Groundwater Sampling and Data Evaluation
 Northwest Pipe Company, Portland, Oregon



Service Layer Credits: Sources: Esri, HERE, DeLorme, USGS, Intermap, increment P Corp., NRCAN, Esri Japan, METI, Esri China (Hong Kong), Esri (Thailand), MapmyIndia, © OpenStreetMap contributors, and the GIS User Community



LEGEND

- Groundwater Elevation Contour (0.5 ft contour interval, ft NGVD29)
- Groundwater Elevation Contour (0.05 ft contour interval, to show detail in the NW Pipe Southeast Area, ft NGVD29)
- Groundwater Flow Direction

Investigation Wells

- Groundwater Quality Monitoring
- Water Level Only
- Northwest Pipe Site Boundary

Note: Groundwater levels measured between 11:20 AM and 12:40 PM on January 30, 2017. During this period, the Willamette River stage decreased by 0.45 foot, as measured at the Broadway Bridge river gauge (USGS 14211720).

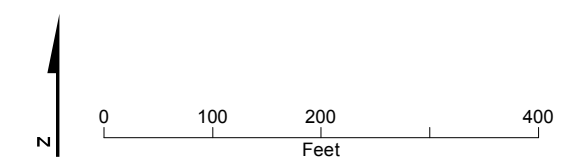
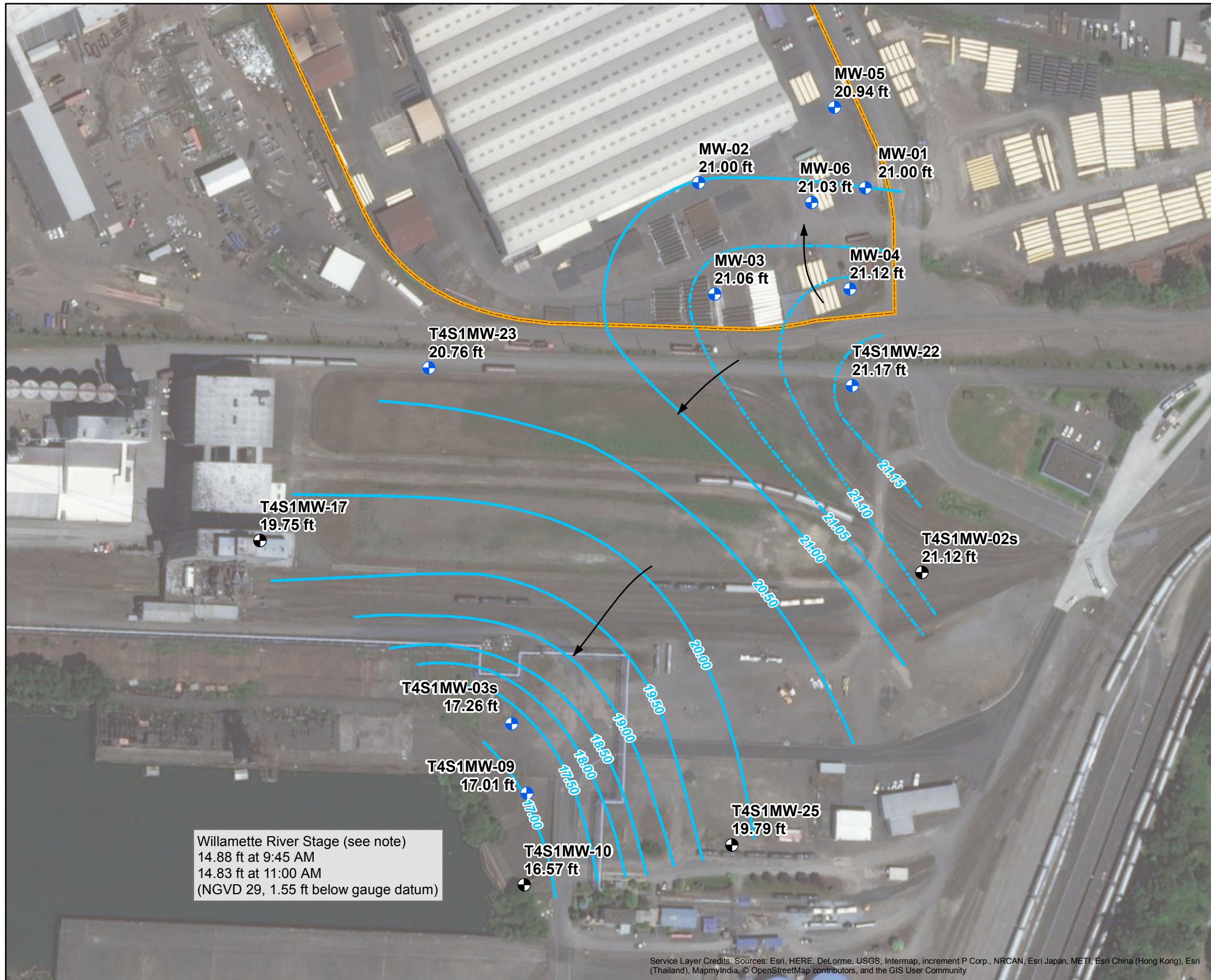


FIGURE 3
Groundwater Elevation Contour Map
January 30, 2017

Supplemental Groundwater Sampling and Data Evaluation
 Northwest Pipe Company, Portland, Oregon



Service Layer Credits: Sources: Esri, HERE, DeLorme, USGS, Intermap, increment P Corp., NRCAN, Esri Japan, METI, Esri China (Hong Kong), Esri (Thailand), MapmyIndia, © OpenStreetMap contributors, and the GIS User Community



Willamette River Stage (see note)
 14.88 ft at 9:45 AM
 14.83 ft at 11:00 AM
 (NGVD 29, 1.55 ft below gauge datum)

Service Layer Credits: Sources: Esri, HERE, DeLorme, USGS, Intermap, increment P Corp., NRCAN, Esri Japan, METI, Esri China (Hong Kong), Esri (Thailand), MapmyIndia, © OpenStreetMap contributors, and the GIS User Community



LEGEND

- Groundwater Elevation Contour (0.5 ft contour interval, ft NGVD29)
- Groundwater Elevation Contour (0.05 ft contour interval, to show detail in the NW Pipe Southeast Area, ft NGVD29)
- Groundwater Flow Direction

Investigation Wells

- Groundwater Quality Monitoring
- Water Level Only
- Northwest Pipe Facility Boundary

Note: Groundwater levels measured between 9:48 AM and 10:51 AM on April 26, 2017. During this period, the Willamette River stage decreased by 0.05 foot, as measured at the Broadway Bridge river gauge (USGS 14211720).

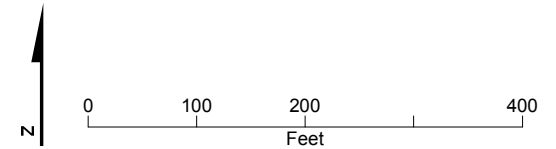
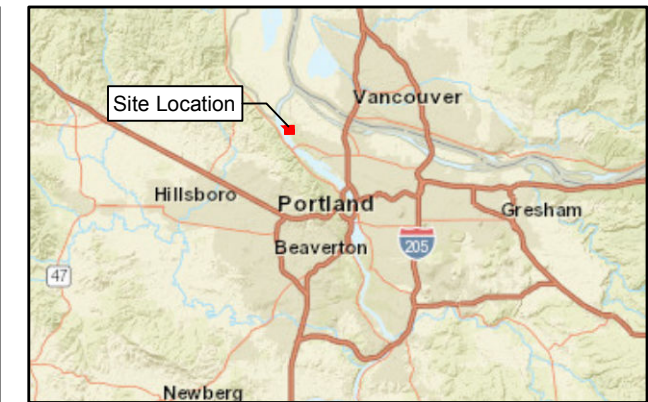


FIGURE 4
Groundwater Elevation Contour Map
April 26, 2017
 Supplemental Groundwater Sampling and Data Evaluation
 Northwest Pipe Company, Portland, Oregon





LEGEND

- Groundwater Elevation Contour (0.5 ft contour interval, ft NGVD29)
- Groundwater Elevation Contour (0.05 ft contour interval, to show detail in the NW Pipe Southeast Area, ft NGVD29)
- Groundwater Flow Direction
- Groundwater Quality Monitoring
- Water Level Only
- Northwest Pipe Facility Boundary

Note: Groundwater levels measured between 3:20 PM and 4:11 PM on July 24, 2017. During this period, the Willamette River stage decreased by 0.09 foot, as measured at the Broadway Bridge river gauge (USGS 14211720).

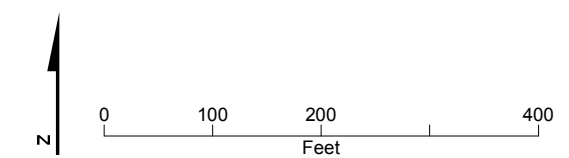
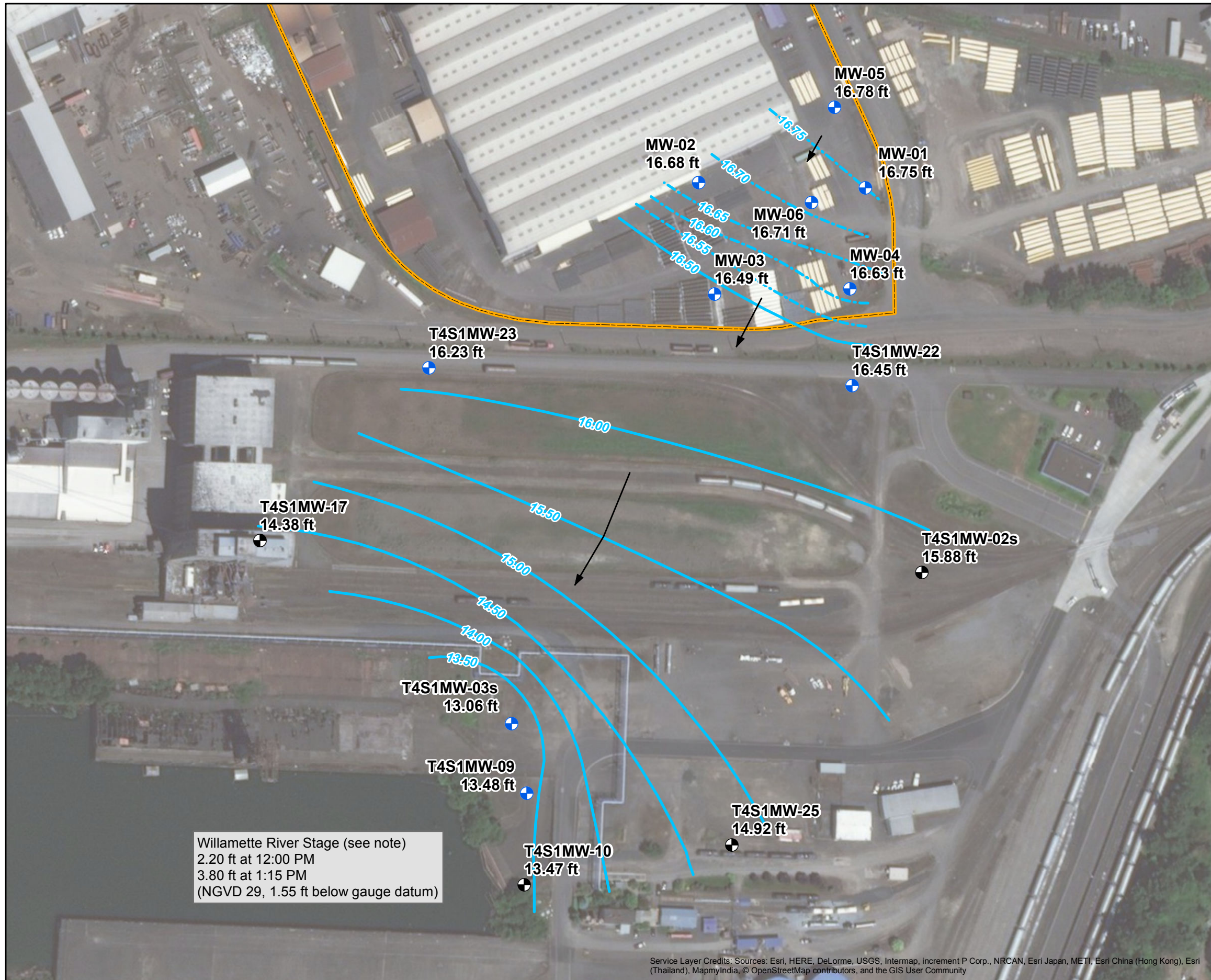


FIGURE 5
Groundwater Elevation Contour Map
July 24, 2017

Supplemental Groundwater Sampling and Data Evaluation
 Northwest Pipe Company, Portland, Oregon



Service Layer Credits: Sources: Esri, HERE, DeLorme, USGS, Intermap, increment P Corp., NRCAN, Esri Japan, METI, Esri China (Hong Kong), Esri (Thailand), MapmyIndia, © OpenStreetMap contributors, and the GIS User Community



Willamette River Stage (see note)
 2.20 ft at 12:00 PM
 3.80 ft at 1:15 PM
 (NGVD 29, 1.55 ft below gauge datum)

Service Layer Credits: Sources: Esri, HERE, DeLorme, USGS, Intermap, increment P Corp., NRCAN, Esri Japan, METI, Esri China (Hong Kong), Esri (Thailand), MapmyIndia, © OpenStreetMap contributors, and the GIS User Community



- LEGEND**
- Groundwater Elevation Contour (0.5 ft contour interval, ft NGVD29)
 - Groundwater Elevation Contour (0.05 ft contour interval, to show detail in the NW Pipe Southeast Area, ft NGVD29)
 - Groundwater Flow Direction
- Investigation Wells**
- Groundwater Quality Monitoring
 - Water Level Only
 - Northwest Pipe Facility Boundary

Note: Groundwater levels measured between 12:00 PM and 1:15 PM on December 4, 2018. During this period, the Willamette River stage increased by 1.6 feet, as measured at the Broadway Bridge river gauge (USGS 14211720).

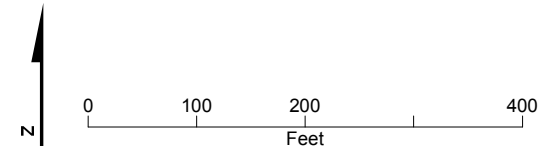
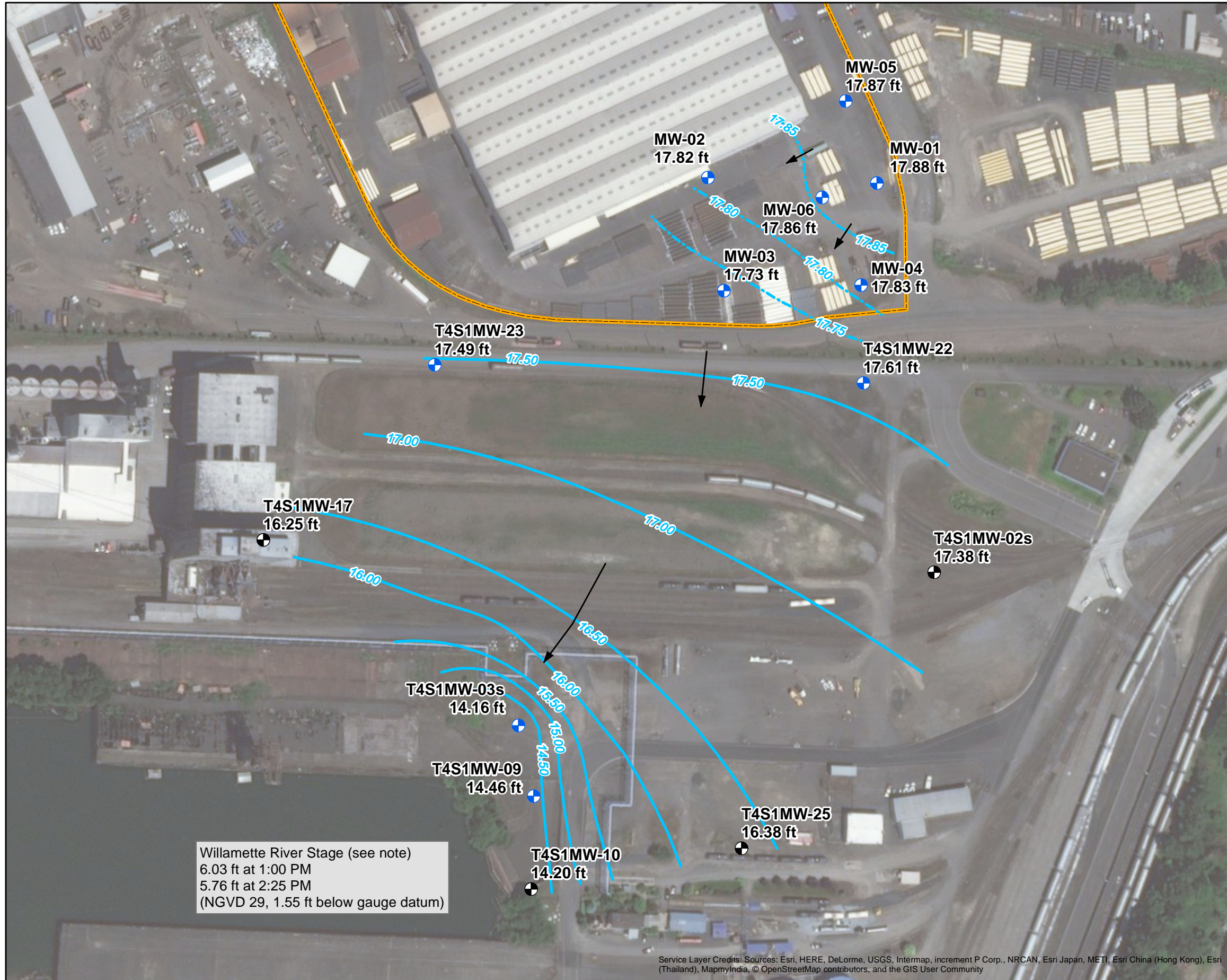


FIGURE 6
Groundwater Elevation Contour Map
December 4, 2018
 Supplemental Groundwater Sampling and Data Evaluation
 Northwest Pipe Company, Portland, Oregon





LEGEND

- Groundwater Elevation Contour (0.5 ft contour interval, ft NGVD29)
- Groundwater Elevation Contour (0.05 ft contour interval, to show detail in the NW Pipe Southeast Area, ft NGVD29)
- Groundwater Flow Direction

Investigation Wells

- Groundwater Quality Monitoring
- Water Level Only
- Northwest Pipe Site Boundary

Note: Groundwater levels measured between 1:00 PM and 2:30 PM on May 7, 2019. During this period, the Willamette River stage decreased by 0.27 feet, as measured at the Broadway Bridge river gauge (USGS 14211720).

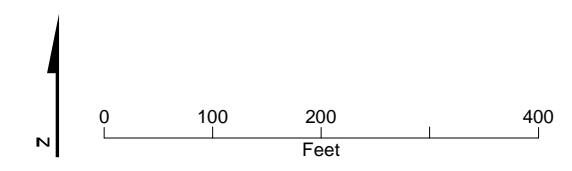
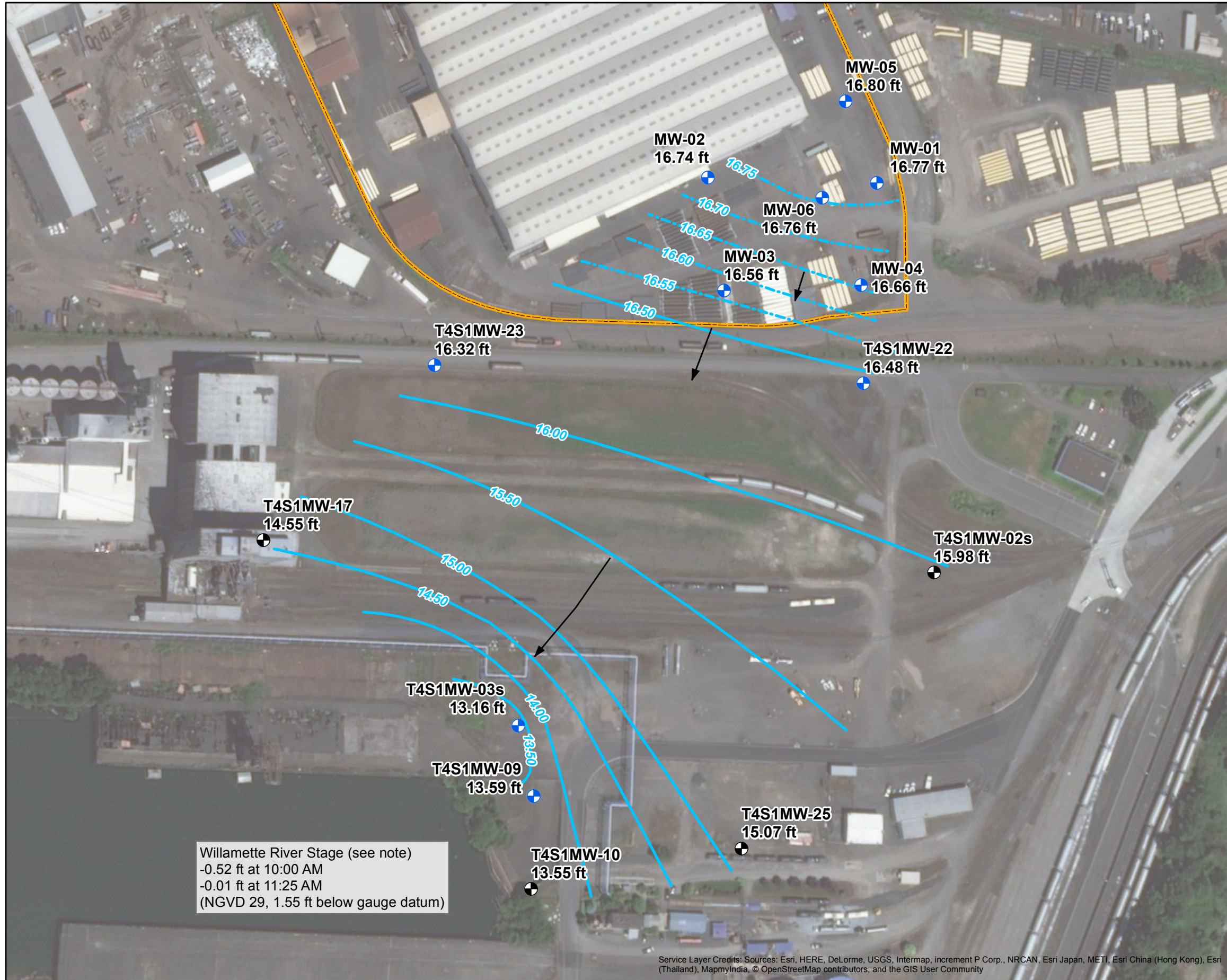


FIGURE 7
Groundwater Elevation Contour Map
May 7, 2019
 Supplemental Groundwater Sampling and Data Evaluation
 Northwest Pipe Company, Portland, Oregon

Service Layer Credits: Sources: Esri, HERE, DeLorme, USGS, Intermap, increment P Corp., NRCAN, Esri Japan, METI, Esri China (Hong Kong), Esri (Thailand), MapmyIndia, © OpenStreetMap contributors, and the GIS User Community



LEGEND

- Groundwater Elevation Contour (0.5 ft contour interval, ft NGVD29)
- Groundwater Elevation Contour (0.05 ft contour interval, to show detail in the NW Pipe Southeast Area, ft NGVD29)
- Groundwater Flow Direction

Investigation Wells

- Groundwater Quality Monitoring
- Water Level Only
- Northwest Pipe Site Boundary

Note: Groundwater levels measured between 10:00 AM and 11:26 AM on October 7, 2019. During this period, the Willamette River stage increased by 0.51 feet, as measured at the Morrison Bridge river gauge (USGS 14211720).

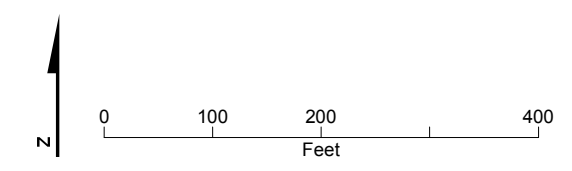


FIGURE 8
Groundwater Elevation Contour Map
October 7, 2019
 Supplemental Groundwater Sampling and Data Evaluation
 Northwest Pipe Company, Portland, Oregon