

# Appendices for: *Conducting Ecological Risk Assessments*



**Land Quality Division**  
Cleanup Program  
700 NE Multnomah St.  
Suite 600  
Portland, OR 97232  
Phone: 503-229-5696  
800-452-4011  
Fax: 503-229-6124  
Contact: Jessika Cohen

*DEQ is a leader in restoring, maintaining and enhancing the quality of Oregon's air, land and water.*



State of Oregon  
Department of  
Environmental  
Quality

DEQ can provide documents in an alternate format or in a language other than English upon request. Call DEQ at 800-452-4011 or email [deqinfo@deq.state.or.us](mailto:deqinfo@deq.state.or.us).

# **Appendix A1: Basic Site Information Checklist**

<b>General Site Information</b>	
<b>ECSI File No. or LUST File No.:</b>	LUST 10-17-1075
<b>Site Name:</b>	Tiller Ranger Station II
<b>Site Location (address, city, and/or county):</b>	27812 Tiller Hwy, Tiller OR, Douglas County
<b>Latitude/Longitude or other location documentation for site:</b>	-122.948029°, 42.927418°
<b>Current and Historical Site Use (gas station, dry cleaner, jet hangar, etc.)<sup>1</sup>:</b>	Ranger station, current and past use as of 1999
<b>Zoning:</b>	Public reserve
<b>Site<sup>2</sup> Features:</b>	Southwest of flammable storage facility. Fuel dispensers were located adjacent to the north of the tanks nest 18.55 Acres
<b>Chemicals of Interest<sup>3</sup>:</b>	gas, diesel, lube and heavy oil, BETX, PAHs, and metals

<sup>1</sup> Include contaminant management, treatment, storage or disposal and areas where a release may have occurred. Historical sources should be identified using sources of information which help in identifying current or past uses or occupants of a site including aerial photographs, fire insurance maps, property tax files, recorded land title records, United States Geological Survey (USGS) 7.5 minute topographic maps, local street directories, building department records, zoning or land use records. Any previous site assessments, environmental assessments or studies should be summarized

<sup>2</sup> Facility or Site (OAR 340-122-0115(26)) means any building, structure, installation, equipment, pipe or pipeline including any pipe into a sewer or publicly owned treatment works, well, pit, pond, lagoon, impoundment, ditch, landfill, storage container, above ground tank, underground storage tank, motor vehicle, rolling stock, aircraft, or any site or area where a hazardous substance has been deposited, stored, disposed of, or placed, or otherwise come to be located and where a release has occurred or where there is a threat of a release, but does not include any consumer product in consumer use or any vessel.

<sup>3</sup> A COI list should include chemicals that are detected or are suspected to be present based on historical and current operations. For Stage 1, the site-specific history of hazardous substance uses and releases is usually the source of potential chemical information. Identify hazardous substances that have the potential to bioaccumulate in Section C2 of Attachment 1.

### Site Conditions – Provide Approximate Areas (acreage or square feet)

These habitats may occur in a range of natural and protected areas, including parks and green space found within urban areas. More information and habitat classification can be found at: <https://oregonexplorer.info/content/classification-wildlife-habitats>

Site Adjacent to Site

\_\_\_\_\_ **Terrestrial Open Habitat / Grasslands:** Dominated by short to medium-tall grasses, low to medium shrubs, or bare soil.

**Forest or Woodland Habitats:** Woodlands (maple, alder, aspen), conifer forest (Douglas fir, hemlock, cedar, spruce), mixed-woodland, juniper, pine (ponderosa, lodgepole).

\_\_\_\_\_ **Wetland<sup>4</sup>:** May be either tidal or non-tidal wetlands with emergent herbaceous plants.

**Riparian Zone:** Patches or linear strips of land adjacent to waterbodies (rivers, streams, waterbodies), or on nearby floodplains and terraces. May be impacted by periodic riverine flooding or perennial flowing water. May or may not also contain wetlands.

**Aquatic Open Water:** Ponds, lakes, reservoirs, rivers, creeks, streams, bays estuaries, and nearshore marine and inter-tidal.

**Impermeable Surface:** Pavement, structures.

### Documentation

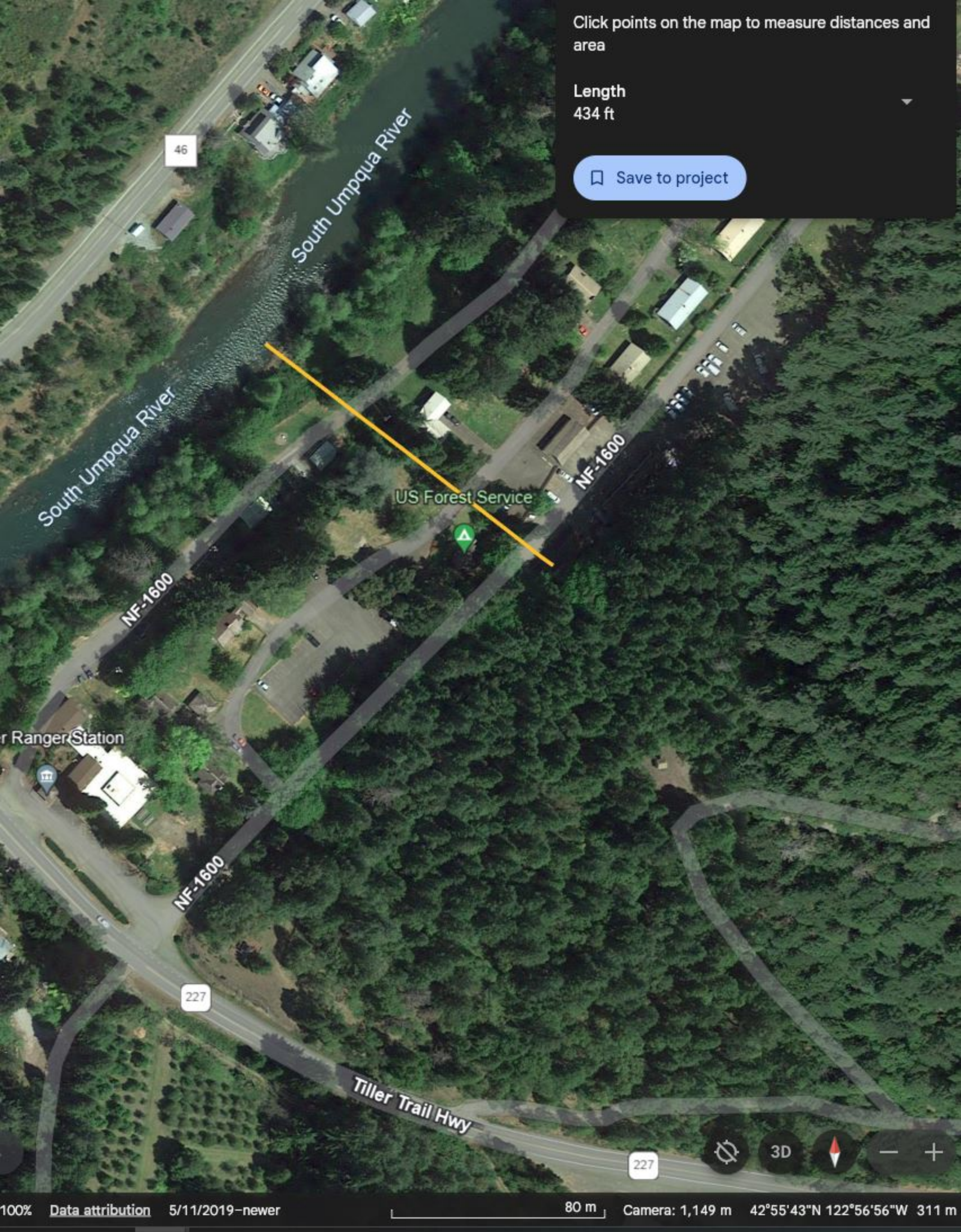
- Aerial Site Vicinity Map(s) identifying zoning and Site features. Include topographic map.
- Summarize known or potential contaminated soil, groundwater, migration pathways.
- Figure illustrating source/release areas, sample locations, estimated areas of contamination, and surface features such as pavement, stormwater catch basins/drainage system including outfalls, dry wells or stormwater swales.
- Aerial Map showing habitat types described above both within and adjacent to the Site by at least 1/4 mile from Site boundary. Definitions and tools<sup>5</sup> for identifying wetlands include:

<sup>4</sup> Covered Under Oregon Statewide Wetlands Inventory (ORS 196.674)

<https://www.oregon.gov/dsl/WW/Pages/SWI.aspx>

<sup>5</sup> Information shown on the Local Wetland Inventory maps is for planning purposes only, as wetland information is subject to change. There may be unmapped wetland and waters subject to regulation and all wetlands and waters boundary mapping is approximate. In all cases, actual field conditions determine the presence, absence and boundaries of wetlands and waters.

<a href="https://www.oregon.gov/dsl/WW/Pages/Inventories.aspx">https://www.oregon.gov/dsl/WW/Pages/Inventories.aspx</a> http://tools.oregonexplorer.info/oe_map_viewer_2_0/viewer.html?Viewer=orwap National Wetlands Inventory: <a href="https://www.fws.gov/wetlands/Data/Mapper.html">https://www.fws.gov/wetlands/Data/Mapper.html</a>	
Checklist Completed By: (name and title/expertise)	Date:



Click points on the map to measure distances and area

Length  
434 ft

Save to project

South Umpqua River

South Umpqua River

NF-1600

US Forest Service

NF-1600

Ranger Station

NF-1600

227

Tiller Trail Hwy

227