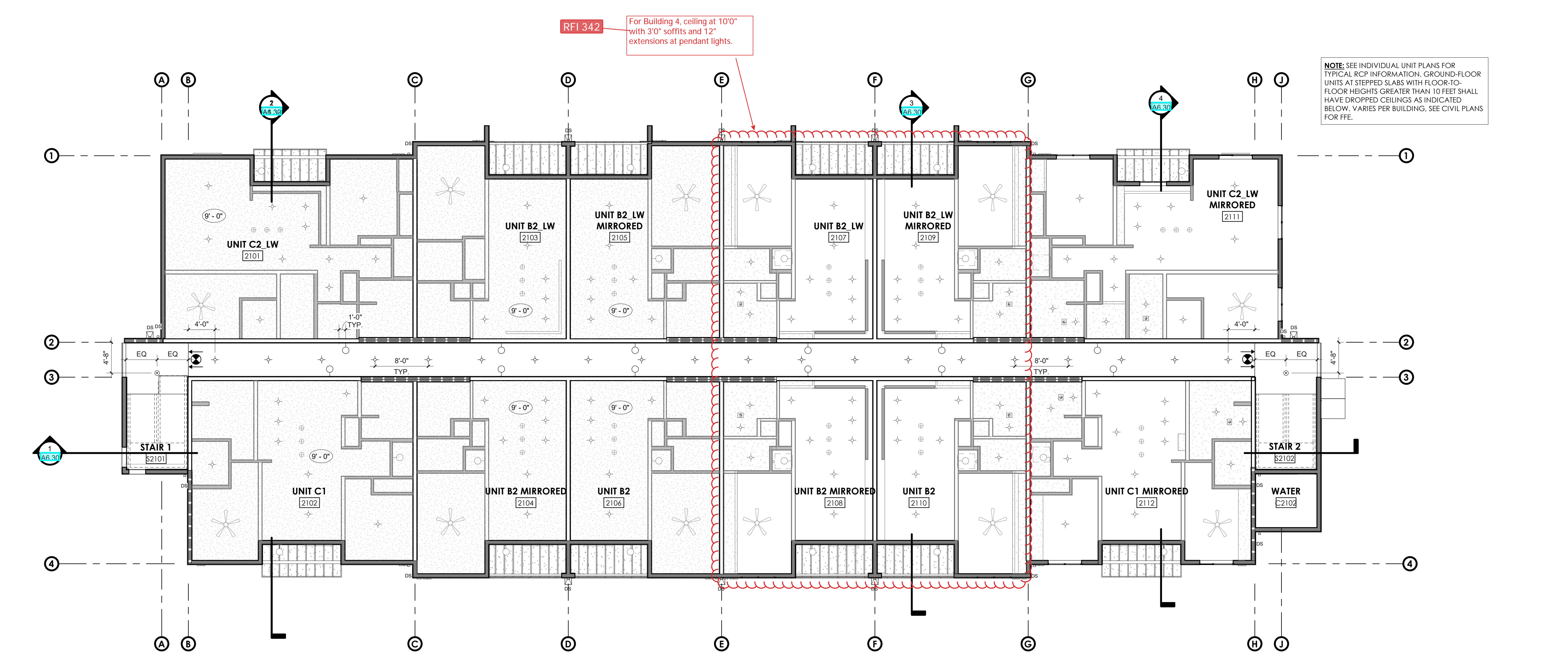


1 LEVEL 1 FLOOR PLAN
1/8" = 1'-0"



2 LEVEL 1 RCP
1/8" = 1'-0"

GENERAL NOTES

- A. REFER TO STRUCTURAL FOR WALL FRAMING INFORMATION, U.N.O.
- B. SITE INFORMATION FOR REFERENCE ONLY. SEE SITE PLANS.
- C. FIRE BLOCKING SHALL BE PROVIDED:
 1. IN CONCEALED SPACES OF STUD WALLS AND PARTITIONS, INCLUDING FURRED SPACES, AT THE CEILING AND FLOOR LEVELS @ 10' INTERVALS BOTH HORIZONTAL AND VERTICAL.
 2. AT ALL INTERCONNECTIONS BETWEEN CONCEALED VERTICAL & HORIZONTAL SPACES SUCH AS SOFFITS, DROP CEILING AND COVE CEILING.
 3. IN OPENINGS AROUND VENTS, PIPES, DUCTS, CHIMNEYS, FIREPLACES & SIMILAR OPENINGS WHICH AFFORD A PASSAGE FOR FIRE AT CEILING & FLOOR LEVELS, WITH NON-COMBUSTIBLE MATERIALS.
 4. AT OPENINGS BETWEEN ATTIC SPACES AND CHIMNEY CHASES FOR FACTORY BUILT CHIMNEYS.
- D. ALL DIMENSIONS ARE TO FRAMING, NOT FINISH WALL DIMENSIONS INDICATED AS "CLR MIN" ARE TO FACE OF FINISH.
- E. ALL DOOR OPENINGS PERPENDICULAR TO A WALL ARE 4" TO THE WALL U.O.N. ALL CLOSE DOOR OPENINGS ARE CENTERED ON INSIDE OF CLOSET U.O.N. AND CIRCLES ON PLAN DESIGNATE REQUIRED ACCESSIBLE SPACE. (2009 ICC/ANSI A117.1)
 1. SETS FOR ALL FINISH DESIGNATIONS AND SELECTIONS. OWNER FINISHES PRIOR TO INSTALLATION.
 2. WINDOW SCHEDULES FOR ADDITIONAL INFORMATION.
 3. LOWER/TUB SHALL BE PROVIDED WITH INDIVIDUAL CONTROL REASSURE BALANCE, THERMOSTATIC, OR COMBINATION ICE/ THERMOSTATIC MIXING VALVE TYPE THAT PROVIDE MAL SHOCK PROTECTION.
- F. WHERE A BALCONY OR OTHER ELEVATED SURFACE THAT INTERCEPTS A WALL IS EXPOSED TO WATER, THE IMPERVIOUS MOISTURE BARRIER SHALL NOT BE CONCEALED UNTIL INSPECTED AND APPROVED.
- G. CONTRACTOR TO CONFIRM ALL CLEARANCE DIMENSIONS WITH MANUFACTURER PRIOR TO CONSTRUCTION. NOTIFY ARCHITECT OF ANY ADJUSTMENTS TO STUD LOCATIONS PRIOR TO INSTALL.
- H. FURNITURE SHOWN FOR REFERENCE ONLY.
- I. PROVIDE PASSIVE UNDER-BASED RADON MITIGATION FOR BUILDING. PROVIDE ONE EXHAUST PIPE PER EVERY 2,000 SF OR TWO DWELLING UNITS. EXHAUST PIPING TO EXIT THROUGH ROOF. PROVIDE ELECTRICAL ROUGH-IN FOR FUTURE FAN. COORDINATE WITH PLUMBING AND ELECTRICAL CONTRACTOR BUILDING CODE. SEE SLAB PLAN FOR ADDITIONAL INFORMATION.

LIVE-WORK UNIT DESIGNATION
THE FOLLOWING UNITS ARE DESIGNATED AS LIVE-WORK. REFER TO SITE PLAN FOR MORE INFORMATION:
BUILDING 2: 2101, 2103, 2105, 2107, 2109, 2111
BUILDING 3: 3101, 3103, 3105

Proposed Indoor Air Sampling locations (Unit 109, 102) in Building 4

Proposed Ambient Air Sampling location

WALL LEGEND

| WALL TYPE | FIRE RATING (SEE FLOOR PLAN) | WALL TYPES, SEE FLOOR PLAN | DETAIL |
|-------------------|------------------------------|----------------------------|----------|
| NON-RATED | | | |
| EX-W1 | EXTERIOR WALL | | 1/A9.01 |
| EX-W2 | EXTERIOR WALL | | 2/A9.01 |
| IN-W1 | INTERIOR WALL | | A/A9.01 |
| 1-HR RATED | | | |
| EX-W3 | EXTERIOR DBL STUD WALL | | 3/A9.01 |
| EX-W4 | EXTERIOR WALL | | 4/A9.01 |
| IN-W4 | INTERIOR WALL | | C/A9.01 |
| EX | EXTERIOR | IN | INTERIOR |
| | | W | WOOD |

SEE A1.00 CODE SERIES SHEETS FOR ADDITIONAL INFORMATION

RCP NOTES

- A. SEE INDIVIDUAL UNIT PLANS FOR TYPICAL RCP INFORMATION.
- B. SEE A9.41 FOR TYPICAL RCP DETAILS AND SUSPENDED CEILING REQUIREMENTS.
- C. CEILING FIXTURES ARE SHOWN FOR COORDINATION WITH CEILING FINISH SYSTEM. SEE MECHANICAL, ELECTRICAL AND SPRINKLER DRAWINGS FOR ALL CEILING FIXTURES AND TYPES ONLY.
- D. SPOT ELEVATIONS ARE FROM FINISH FLOOR TO SURFACE OF CEILING AND ARE ROUNDED TO THE NEAREST INCH TYP.
- E. MAINTAIN FIRE RESISTIVE RATING AT RECESSED FIXTURE AT BOTTOM OF A FIRE RATED HORIZONTAL ASSEMBLY.
- F. COORDINATE ALL REQUIRED ACCESS PANELS SIZE AND LOCATION WITH ALL TRADES.
- G. CEILING FIXTURES TO BE CENTERED OR EQUALLY SPACED AND ALIGNED IN ROOM U.O. SHOWER LIGHTS TO BE CENTERED IN SHOWER ENCLOSURE.
- H. CEILING GRID TO BE CENTERED IN BOTH DIRECTIONS U.O.
- I. SPRAY PAINT ALL METAL ACCESS PANELS AND DIFFUSERS TO MATCH ADJACENT CEILING FINISHES U.O.

RCP LEGEND

- NOTE 1:** SEE ELECTRICAL PLAN FOR COORDINATION AND ADDITIONAL INFORMATION NOT SHOWN.
- NOTE 2:** GRAY TRIANGLES IN LIGHT FIXTURE SYMBOLS DENOTE EMERGENCY LIGHT FIXTURES.
- ◻ BOTTOM OF FIRE RESISTIVE HORIZONTAL ASSEMBLY. SEE A9.01
 - ◻ NONRATED GYP. BD. SOFFIT. SEE A9.41
 - RECESSED LIGHT FIXTURE - MAINTAIN 1 HOUR RATING AT FLOOR/ ROOF-CEILING PENETRATION WHERE OCCURS. SEE A9.10
 - RECESSED EMERGENCY LIGHT FIXTURE - MAINTAIN 1 HOUR RATING AT FLOOR/ ROOF-CEILING PENETRATION WHERE OCCURS. SEE A9.10
 - LINEAR PENDANT FIXTURE
 - LINEAR WALL-MOUNTED FIXTURE
 - ⊠ EXHAUST FAN, REFER TO MECHANICAL
 - ⊕ FLUSH MOUNTED CEILING LIGHT FIXTURE
 - ⊖ L-17: DECORATIVE PENDANT LIGHT FIXTURE
 - UNDER CABINET LIGHTING, CONTINUOUS LED STRIP
 - WALL MOUNTED VANITY LIGHT FIXTURE
 - ⊖ L-19: WALL MOUNTED LIGHT FIXTURE
 - ⊗ CEILING FAN W/ LIGHT
 - ⊠ EXIT SIGNS (W/ INTEGRAL ARROW WHERE OCCURS) FLUORESCENT LIGHT FIXTURE SURFACE MOUNT
 - ⊠ WALL MOUNTED EMERGENCY STROBE
 - ⊠ 24"x36" ATTIC ACCESS DOOR ASSEMBLY
 - ⊗ CEILING HEIGHT
 - ⊖ CEILING FINISH
 - ⊗ SMOKE DETECTOR

REFERENCE NOTES

- 059 7 FOOT DEEP GROUND FLOOR PATIOS WITH FENCE FOR DWELLING PRIVACY/SECURITY. TYP ALL GROUND FLOOR DWELLING UNITS. SEE EACH BUILDING PACKAGE FOR MORE INFORMATION.
- 204 SEMI RECESSED FIRE EXTINGUISHER CABINET (FEC), TYP.
- 254 FLOOR DRAIN, SLOPE TO DRAIN, 2% MAX. S.P.D.
- 344 HOSE BIB, COORDINATE WITH PLUMBING DRAWINGS
- 352 ROOF SCUPPER AND DOWNSPOUT
- 353 4" ALUMINUM PAINTED GUTTER AND DOWNSPOUT. SEE ROOF PLAN AND S.P.D.

Arris
STUDIO ARCHITECTS

ADDRESS: 1221 SW YAMHILL ST., STE. 300
PORTLAND, OR 97205
CONTACT: 803.547.2240
ARRIS-STUDIO.COM
THOMAS E. JESS ARCHITECT (CA) #C27048
STEPHEN A. RIGOR ARCHITECT (CA) #C33472
Architect of Record/Consultant

Registered Architect
Thomas E. Jess
Lic. # 12620
State of Oregon

Consultant

Client
MONROE APARTMENTS OWNER, LLC
760 SW 9TH AVENUE, SUITE 2200
PORTLAND, OR 97205
(503) 802 - 3600

Project
MONROE APARTMENTS
BUILDING 2-4
10999 SE 37TH, MILWAUKIE, OR 97222
BUILDING #2-4 - LEVEL 1 - OVERALL
FLOOR PLAN AND RCP

| NO. | REVISION | DATE |
|-----|-----------------------|------------|
| 1 | FINAL CHECK REVISIONS | 10/01/2021 |
| 2 | FULL BID SET ISSUE | 10/14/2021 |
| 3 | CONSTRUCTION SET | 11/22/2021 |

Project: A20070
Date: 12/21/2020
Sheet: **A6.00**

10/22/2021 09:00:00 AM - C:\Users\jess\OneDrive\Documents\A20070\Bldg 2-4.rvt

THE INCLUDED DRAWINGS, SPECIFICATIONS, IDEAS, DESIGNS & ARRANGEMENTS REPRESENTED THEREBY ARE AND SHALL REMAIN THE PROPERTY OF ARRIS STUDIO ARCHITECTS AND NO PART THEREOF SHALL BE COPIED, DISCLOSED TO OTHERS OR USED IN CONNECTION WITH ANY WORK OR PROJECT OTHER THAN THE SPECIFIC PROJECT FOR WHICH THEY HAVE BEEN PREPARED AND DEVELOPED WITHOUT THE WRITTEN CONSENT OF ARRIS STUDIO ARCHITECTS. ISSA CONTRACT WITH THESE DRAWINGS OR SPECIFICATIONS SHALL CONSTITUTE CONCLUSIVE EVIDENCE OF ACCEPTANCE OF THESE RESTRICTIONS. SUBMITTAL OF THESE DOCUMENTS FOR PUBLIC OFFICIAL REVIEW SHALL NOT BE CONSIDERED A WAIVER OF ARRIS STUDIO ARCHITECTS RIGHTS. ARRIS STUDIO ARCHITECTS COPYRIGHT 2020

REFERENCE NOTES

- 018 ELECTRICAL METER/SWITCH GEAR - SEE ELECTRICAL DRAWINGS
- 028 GAS METER - SEE PLUMBING DRAWINGS
- 109 MRL ELEVATOR WITH REMOTE CLOSET
- 131 DOOR MANEUVERING CLEARANCES
- 217 DIRECT VENT, SEE THROUGH GAS FIREPLACE, SEE FIXTURES & FINISHES SCHEDULE.
- 220 PAINTED STEEL ATTIC ACCESS LADDER
- 223 DECORATIVE METAL STAIRCASE
- 241 LINE OF ATTIC ACCESS HATCH ABOVE
- 260 EXTERIOR LIGHT FIXTURE, S.E.D. & SEE FIXTURES & FINISHES SCHEDULE.
- 292 COFFER DECK, SEE **RF 24.0** AND FIXTURES & FINISHES SCHEDULE.
- 293 AMAZON APARTMENT LOCKER, SEE 2/A4.20.
- 294 BUILT-IN LEASING LOUNGE COUNTERTOP WITH WATERFALL EDGE, PROVIDE POWER, DATA & USB OUTLETS, SEE **RF 24.0**.
- 295 LINE OF VAULTED CEILING ABOVE (SHOWN DASHED), SEE REFLECTED CEILING PLAN.
- 296 NON-STRUCTURAL ROOF TRUSS AT EXTERIOR COVERED AREA.
- 297 STRUCTURAL BEAM (SHOWN DASHED ABOVE), S.S.D.
- 298 STRUCTURAL BEAM, S.S.D.
- 299 STRUCTURAL COLUMN, S.S.D.
- 353 4" ALUMINUM PAINTED GUTTER AND DOWNSPOUT, SEE ROOF PLAN AND S.P.D.
- 606 EMERGENCY GAS SHUTOFF SWITCH, MOUNT PER ACCESSIBILITY REACH RANGE REQUIREMENTS, SEE ACCESSIBILITY SHEETS.

WALL LEGEND

| WALL TYPE | DETAIL |
|----------------------------------|-----------|
| NON-RATED | |
| EX-W1 EXTERIOR WALL | 1/A 9.00 |
| EX-W2 EXTERIOR WALL | 2/A 9.00 |
| IN-F1 INTERIOR WOOD FURRED WALL | F1/A 9.00 |
| IN-F2 INTERIOR METAL FURRED WALL | F2/A 9.00 |
| IN-W1 INTERIOR WALL | A/A 9.00 |
| 1-HR RATED | |
| EX-W3 EXTERIOR WALL | 3/A 9.00 |
| EX-W4 EXTERIOR DBL. STUD WALL | 4/A 9.00 |
| IN-W3 INTERIOR WALL | C/A 9.00 |

EX: EXTERIOR IN: INTERIOR W: WOOD F: FURRED
SEE **A1.00** CODE SHEET SERIES FOR ADDITIONAL INFORMATION

GENERAL PLAN NOTES

- A. REFER TO STRUCTURAL FOR WALL FRAMING INFORMATION, U.N.O
- B. SITE INFORMATION FOR REFERENCE ONLY, SEE SITE PLANS.
- C. FIRE BLOCKING SHALL BE PROVIDED:
 1. IN CONCEALED SPACES OF STUD WALLS AND PARTITIONS, INCLUDING FURRED SPACES, AT THE CEILING AND FLOOR LEVELS @ 10' INTERVALS BOTH HORIZONTAL AND VERTICAL.
 2. AT ALL INTERCONNECTIONS BETWEEN CONCEALED VERTICAL & HORIZONTAL SPACES SUCH AS SOFFITS, DROP CEILINGS AND COVE CEILINGS.
 3. IN OPENINGS AROUND VENTS, PIPES, DUCTS, CHIMNEYS, FIREPLACES & SIMILAR OPENINGS WHICH AFFORD A PASSAGE FOR FIRE AT CEILING & FLOOR LEVELS, WITH NON-COMBUSTIBLE MATERIALS.
 4. AT OPENINGS BETWEEN ATTIC SPACES AND CHIMNEY CHASES FOR FACTORY BUILT CHIMNEYS.
- D. ALL DIMENSIONS ARE TO FRAMING, NOT FINISH WALL DIMENSIONS INDICATED AS "CLR MIN" ARE TO FACE OF FINISH.
- E. ALL DOOR OPENINGS PERPENDICULAR TO A WALL ARE 4" TO THE WALL U.O.N. ALL CLOSET DOOR OPENINGS ARE CENTERED ON INSIDE OF CLOSET U.O.N.
- F. DASHED BOXES AND CIRCLES ON PLAN DESIGNATE REQUIRED ACCESSIBLE CLEAR FLOOR SPACE. (2009 ICC/ANSI A117.1)
- G. SEE INTERIORS SHEETS FOR ALL FINISH DESIGNATIONS AND SELECTIONS, OWNER TO APPROVE ALL FINISHES PRIOR TO INSTALLATION.
- H. REFER TO DOOR AND WINDOW SCHEDULES FOR ADDITIONAL INFORMATION.
- I. SHOWERS AND SHOWER/TUB SHALL BE PROVIDED WITH INDIVIDUAL CONTROL VALVES OF THE PRESSURE BALANCE, THERMOSTATIC, OR COMBINATION PRESSURE BALANCE/THERMOSTATIC MIXING VALVE TYPE THAT PROVIDE SCALD AND THERMAL SHOCK PROTECTION.
- J. WHERE A BALCONY OR OTHER ELEVATED SURFACE THAT INTERCEPTS A WALL IS EXPOSED TO WATER, THE IMPERVIOUS MOISTURE BARRIER SHALL NOT BE CONCEALED UNTIL INSPECTED AND APPROVED.
- K. CONTRACTOR TO CONFIRM ALL CLEARANCE DIMENSIONS WITH MANUFACTURER PRIOR TO CONSTRUCTION, NOTIFY ARCHITECT OF ANY ADJUSTMENTS TO STUD LOCATIONS PRIOR TO INSTALL.
- L. FURNITURE SHOWN FOR REFERENCE ONLY.
- M. PROVIDE PASSIVE UNDERSLAB RADON MITIGATION FOR BUILDING, PROVIDE ONE EXHAUST PIPE PER EVERY 2,000 SF OR TWO DWELLING UNITS, EXHAUST PIPING TO EXIT THROUGH ROOF, PROVIDE ELECTRICAL ROUGH-IN FOR FUTURE IN-LINE EXHAUST FAN, COORDINATE WITH PLUMBING AND ELECTRICAL ENGINEERS AND OREGON BUILDING CODE, SEE SLAB PLAN FOR ADDITIONAL INFORMATION.
- N. SEE **A0.23 & A0.27** FOR FULL ACCESSIBILITY REQUIREMENTS.

RCP NOTES

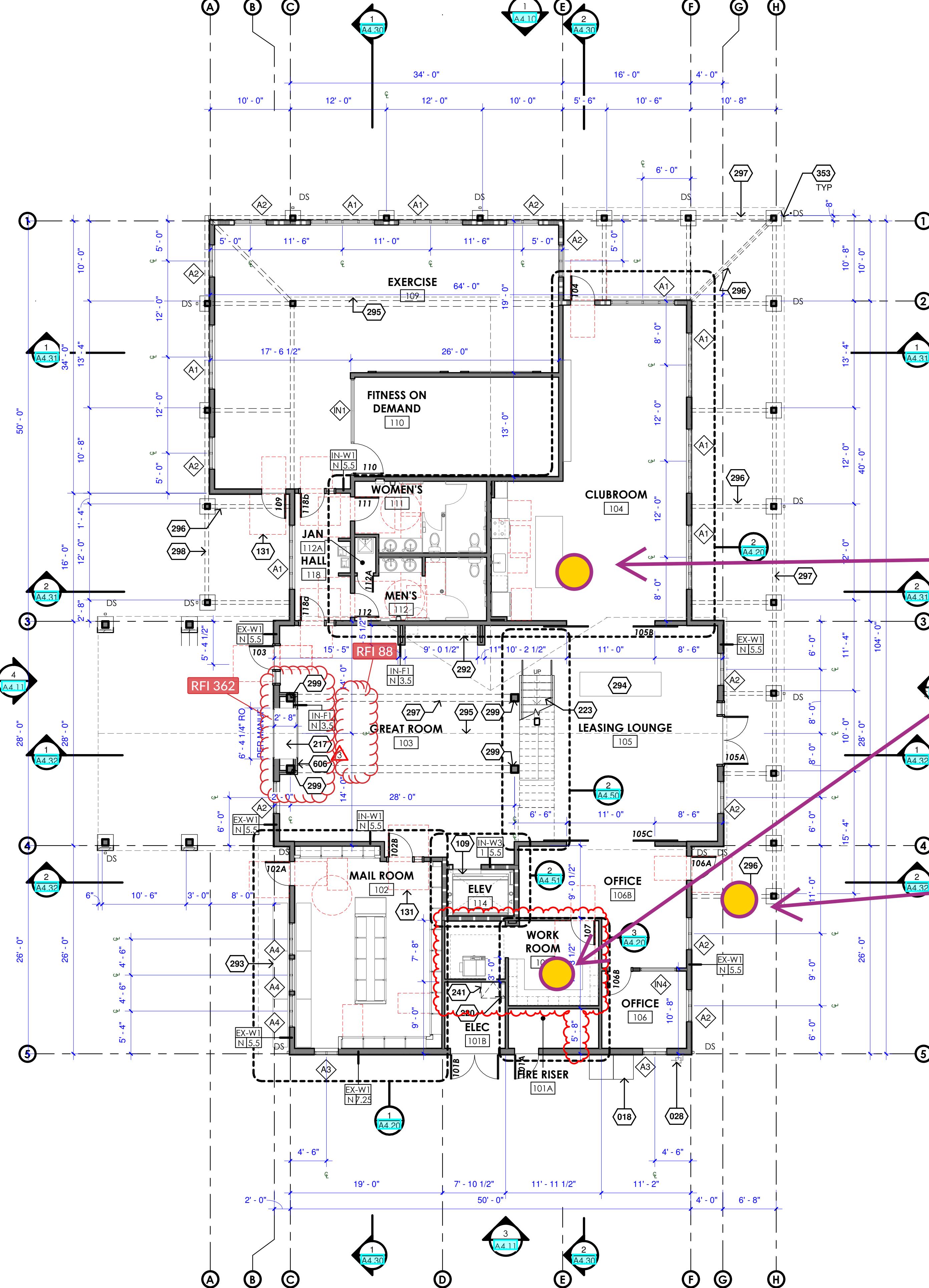
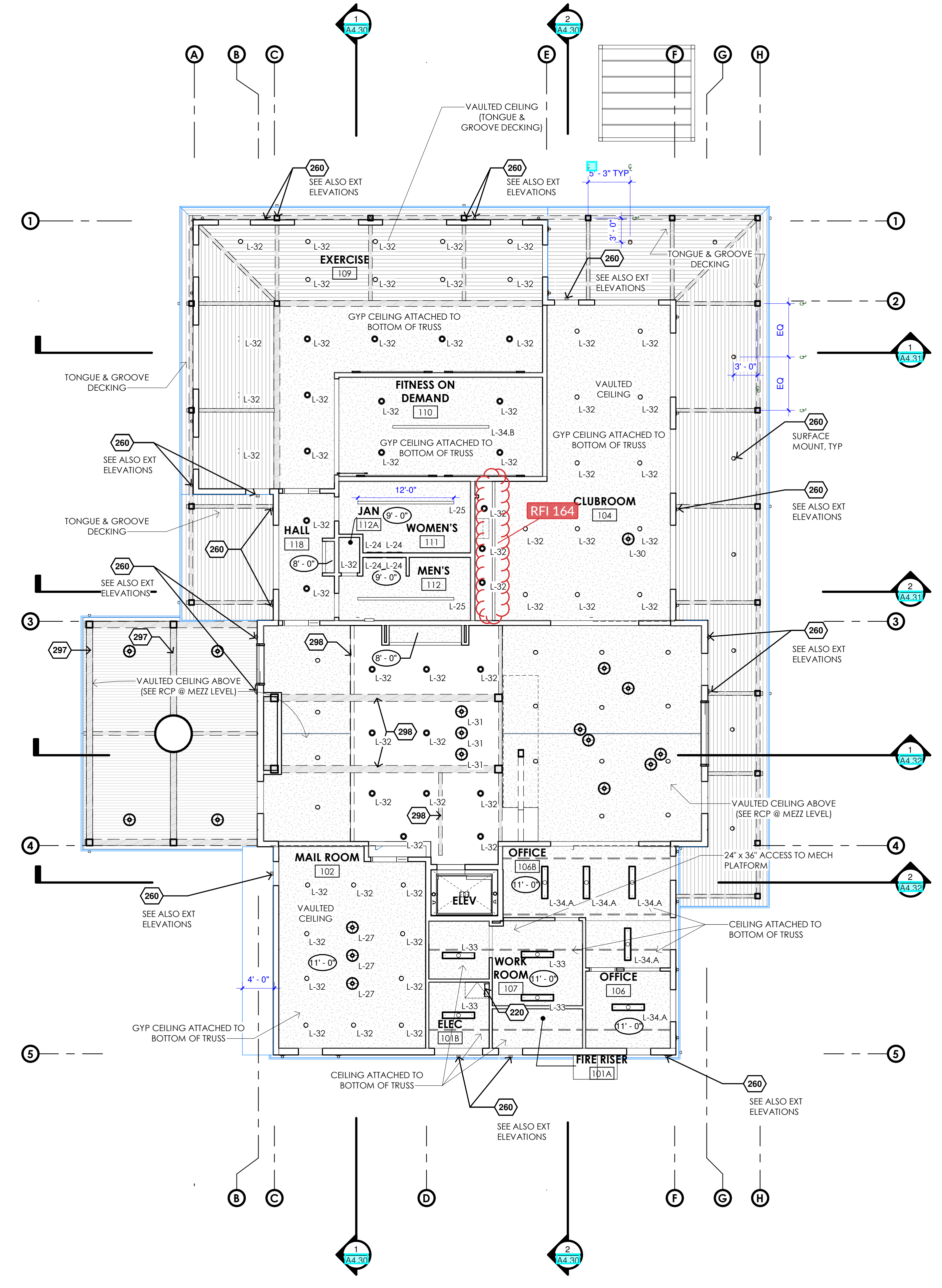
1. CEILING FIXTURES ARE SHOWN FOR COORDINATION WITH CEILING FINISH SYSTEM, SEE MECHANICAL, ELECTRICAL AND SPRINKLER DRAWINGS FOR ALL CEILING FIXTURES AND TYPES ONLY.
2. SEE MECHANICAL DRAWINGS FOR GRILLES AND DIFFUSER SIZES AND DRAFT STOP LOCATIONS, AND FOR MECHANICAL GRILLE SYMBOLS.
3. SEE DRAWINGS FOR ELECTRICAL, LIGHT, FIRE ALARM AND SIGNAL SYMBOLS LIST, LIGHTING LOCATION AND DETAILS.
4. SEE UNIT PLANS FOR UNIT CEILING LOCATIONS AND FINISHES.
5. SEE INTERIOR DESIGN DRAWINGS FOR LIGHT FIXTURE HEIGHTS.
6. SEE FINISH SCHEDULE FOR FURTHER INFORMATION.
7. SPOT ELEVATIONS ARE FROM FINISH FLOOR TO SURFACE OF CEILING AND ARE ROUNDED TO THE NEAREST 1/8" TYP.
8. MAINTAIN FIRE RESISTIVE RATING AT RECESSED FIXTURE AT BOTTOM OF A FIRE RATED HORIZONTAL ASSEMBLY.
9. COORDINATE ALL REQUIRED ACCESS PANELS SIZE AND LOCATION WITH ALL TRADES.
10. CEILING GRID TO BE CENTERED IN BOTH DIRECTIONS UNO.
11. SPRAY PAINT ALL METAL ACCESS PANELS AND DIFFUSERS TO MATCH ADJACENT CEILING FINISHES UNO.
12. PER **OSCC XXX**: WHERE THERE IS AN ACCESSIBLE CONCEALED FLOOR, FLOOR-CEILING OR ATTIC SPACE, FIRE WALLS, FIRE BARRIERS, FIRE PARTITIONS, SMOKE BARRIERS AND SMOKE PARTITIONS OR ANY OTHER WALL REQUIRED TO HAVE PROTECTED OPENINGS OR PENETRATIONS SHALL BE EFFECTIVELY AND PERMANENTLY IDENTIFIED WITH SIGNS OR STENCILING, SUCH IDENTIFICATIONS SHALL:
 - A. BE WITHIN 15 FEET OF THE END OF EACH WALL AND AT INTERVALS NOT EXCEEDING 30 FEET MEASURED HORIZONTALLY ALONG THE WALL OR PARTITION
 - B. INCLUDE LETTERING NOT LESS THAN 3 INCHES IN HEIGHT WITH A MINIMUM 3/8" INCH STROKE IN A CONTRASTING COLOR INCORPORATING THE SUGGESTED WORDING, TRIM OPENINGS OR OTHER WALL REQUIRED TO HAVE PROTECTED OPENINGS OR PENETRATIONS SHALL BE EFFECTIVELY AND PERMANENTLY IDENTIFIED WITH SIGNS OR STENCILING, SUCH IDENTIFICATIONS SHALL:
13. GYPBOARD CEILING WIRE SHALL BE NOTED.
14. PROVIDE FIRE/SMOKE DAMPER RATED SHAFTS, AND FIRE RATED

RCP LEGEND

- NOTE: GRAY TRIANGLES IN LIGHT FIXTURE SYMBOLS DENOTE EMERGENCY LIGHT FIXTURES
- NON-RATED GYP. BD. SOFFIT OR NON-RATED ONE LAYER GYP. BD. INSTALLED TO BOTTOM OF HORIZONTAL ASSEMBLY, SEE BUILDING SECTIONS & SHEET A1.35
 - HVAC SUPPLY
 - HVAC RETURN
 - LED 2x4 LAY-IN LIGHT FIXTURE
 - RECESSED LIGHT FIXTURE - MAINTAIN 1 HOUR RATING AT FLOOR/ROOF-CEILING PENETRATION WHERE OCCURS, SEE **XXXXX**
 - WALL MOUNTED VANITY LIGHT FIXTURE
 - WALL MOUNTED LED LIGHT FIXTURE
 - DECORATIVE LED PENDANT LIGHT FIXTURE
 - RECESSED LINEAR LED LIGHT FIXTURE
 - UNDERCABINET LED TAPE LIGHT
 - EXIT SIGNS (W/ INTEGRAL ARROW WHERE OCCURS) FLUORESCENT LIGHT FIXTURE SURFACE MOUNT
 - WALL MOUNTED EMERGENCY STROBE
 - 24"x36" RATED ATTIC ACCESS DOOR ASSEMBLY
 - CEILING HEIGHT
 - EXTERIOR LIGHT FIXTURE, WALL MOUNT, SEE EXTERIOR ELEVATIONS FOR MORE INFO
 - EXTERIOR LIGHT FIXTURE, WALL MOUNT, SEE EXTERIOR ELEVATIONS FOR MORE INFO
 - EXTERIOR LIGHT FIXTURE, SURFACE MOUNT AT T&G CEILING OFF CLUBROOM

Proposed Indoor Air Sampling Locations in Clubhouse

Proposed Ambient Air Sampling Location



2 REFLECTED CEILING PLAN - LEVEL 1
1/8" = 1'-0"

1 FLOOR PLAN - LEVEL 1
1/8" = 1'-0"

Arris
STUDIO ARCHITECTS

ADDRESS:
1221 SW YAMHILL ST., STE. 300
PORTLAND, OR 97205

CONTACT:
803.547.2240
ARRIS-STUDIO.COM

THOMAS E. JESS ARCHITECT (CA) #C27048
STEPHEN A. RIGOR ARCHITECT (CA) #C23472

Registered Architect
Thomas E. Jess
State of Oregon

Consultant

MONROE APARTMENTS OWNER, LLC

760 SW 9TH AVENUE, SUITE 220
PORTLAND, OR 97205
(503) 802-3600

MONROE APARTMENTS

10999 SE 37TH AVENUE, MILWAUKIE, OR 97222
CLUBHOUSE - FLOOR PLAN & RCP - LEVEL 1

| NO. | REVISION | DATE |
|-----|----------------------|------------|
| 1 | PLAN CHECK REVISIONS | 10/01/2021 |
| 2 | FULL BID SET ISSUE | 10/14/2021 |
| 3 | CONSTRUCTION SET | 11/22/2021 |

Project: A20070
Date: 12/21/2020
Sheet: **A4.00**

THE INCLUDED DRAWINGS, SPECIFICATIONS, IDEAS, DESIGNS & ARRANGEMENTS REPRESENTED THEREBY ARE AND SHALL REMAIN THE PROPERTY OF ARRIS STUDIO ARCHITECTS AND NO PART THEREOF SHALL BE COPIED, DISCLOSED TO OTHERS OR USED IN CONNECTION WITH ANY WORK OR PROJECT OTHER THAN THE SPECIFIC PROJECT FOR WHICH THEY HAVE BEEN PREPARED AND DEVELOPED WITHOUT THE WRITTEN CONSENT OF ARRIS STUDIO ARCHITECTS. ISSA CONTRACT WITH THESE DRAWINGS OR SPECIFICATIONS SHALL CONSTITUTE CONCLUSIVE EVIDENCE OF ACCEPTANCE OF THESE DOCUMENTS FOR PUBLIC OFFERING. SUBMITTAL OF THESE DOCUMENTS FOR PUBLIC OFFERING SHALL NOT BE CONSIDERED A WAIVER OF ARRIS STUDIO ARCHITECTS RIGHTS. ARRIS STUDIO ARCHITECTS COPYRIGHT 2020