

**FIGURE 1**

**PDX FUEL FACILITY  
PIPE SUPPORTS BEING DEMOLISHED**



APPROXIMATE LOCATION OF KINDER MORGAN / PFC DEMARCATION

INDICATES DEMOLITION



START OF AIRCRAFT HYDRANT SYSTEM (AHS)

FIGURE 1 - PDX FUEL FACILITY DEMOLITION PLAN

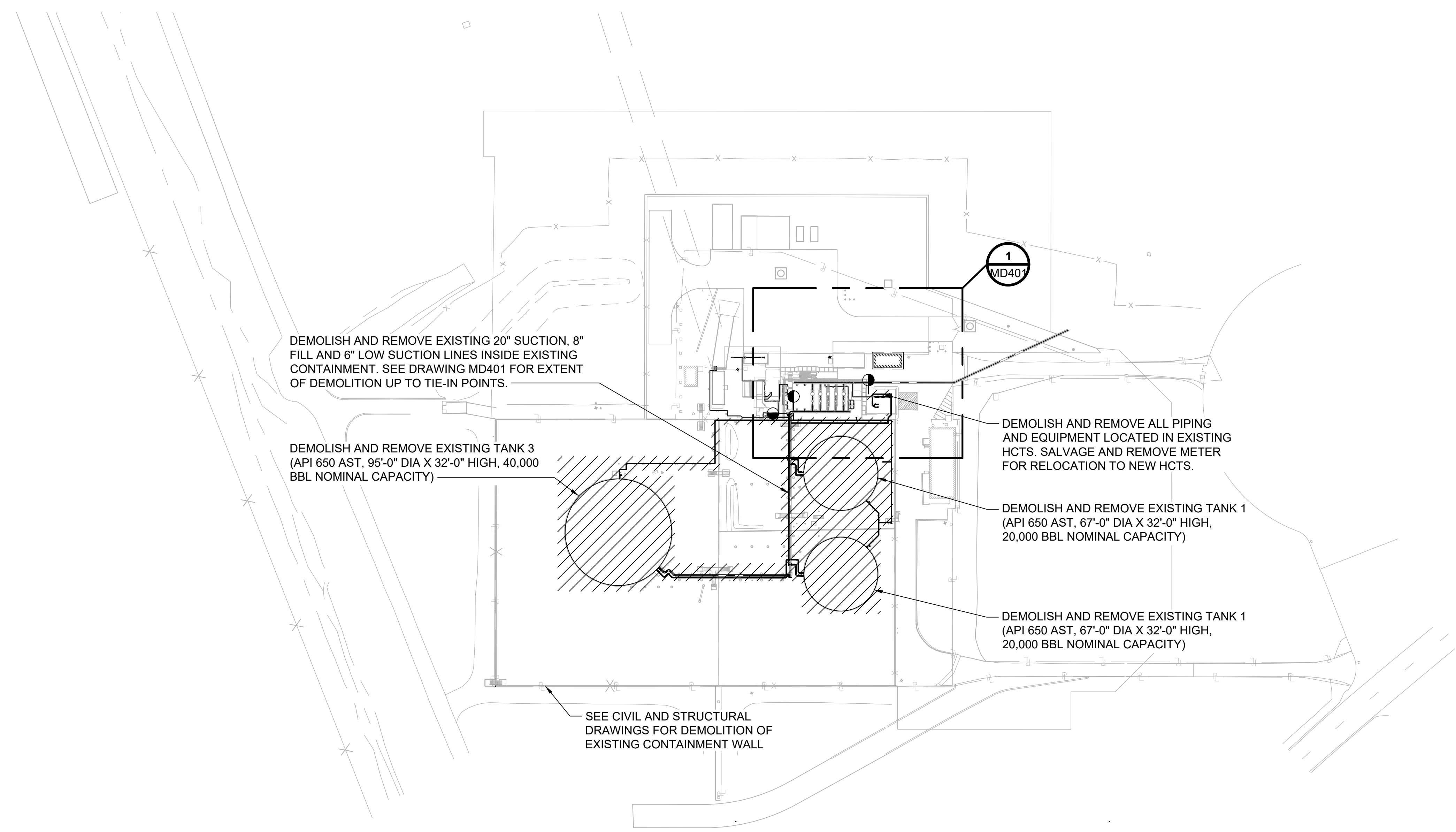
**FIGURE 2**

**MD101, MECHANICAL DEMOLITION OVERALL SITE PLAN**

**NOTES:**

1. SEE DRAWINGS M-001 AND M-002 FOR ABBREVIATIONS, SYMBOLS, INSTRUMENTATION, AND GENERAL FUELING AND PHASING NOTES.
2. SEE DRAWINGS MD101 AND MD401 FOR MECHANICAL FUELING DEMO PLANS.

Millimeters  
Scale For Microfining  
Inches



DEMOLISH AND REMOVE EXISTING 20" SUCTION, 8" FILL AND 6" LOW SUCTION LINES INSIDE EXISTING CONTAINMENT. SEE DRAWING MD401 FOR EXTENT OF DEMOLITION UP TO TIE-IN POINTS.

DEMOLISH AND REMOVE EXISTING TANK 3 (API 650 AST, 95'-0" DIA X 32'-0" HIGH, 40,000 BBL NOMINAL CAPACITY)

DEMOLISH AND REMOVE ALL PIPING AND EQUIPMENT LOCATED IN EXISTING HCTS. SALVAGE AND REMOVE METER FOR RELOCATION TO NEW HCTS.

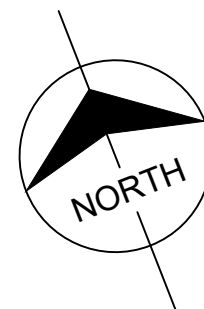
DEMOLISH AND REMOVE EXISTING TANK 1 (API 650 AST, 67'-0" DIA X 32'-0" HIGH, 20,000 BBL NOMINAL CAPACITY)

DEMOLISH AND REMOVE EXISTING TANK 1 (API 650 AST, 67'-0" DIA X 32'-0" HIGH, 20,000 BBL NOMINAL CAPACITY)

SEE CIVIL AND STRUCTURAL DRAWINGS FOR DEMOLITION OF EXISTING CONTAINMENT WALL

**MECHANICAL OVERALL SITE PLAN**

0 60' 120'  
SCALE IN FEET



no.	date	by	ckd	description
A	12/21/23	DLW	JJB	ISSUED FOR PERMIT
B	05/10/24	DLW	JJB	PERMIT REVISION 1

**ISSUED FOR PERMIT ONLY**



9400 WARD PARKWAY  
KANSAS CITY, MO 64114  
816-333-9400  
Burns & McDonnell Engineering Co., Inc.

date	06/07/2023	detailed	H. HARMON
designed	D. WOODWARD	checked	J. BURD

**PDX FUEL COMPANY L.L.C**

PORTLAND INTERNATIONAL AIRPORT  
5000 NE MARINE DR.  
PORTLAND, OREGON 97218

**PDX FACILITY IMPROVEMENTS  
MECHANICAL DEMOLITION OVERALL  
SITE PLAN**

project	153929	contract	
drawing	<b>MD101</b>	rev.	<b>B</b>
file 153929MD101.DWG			

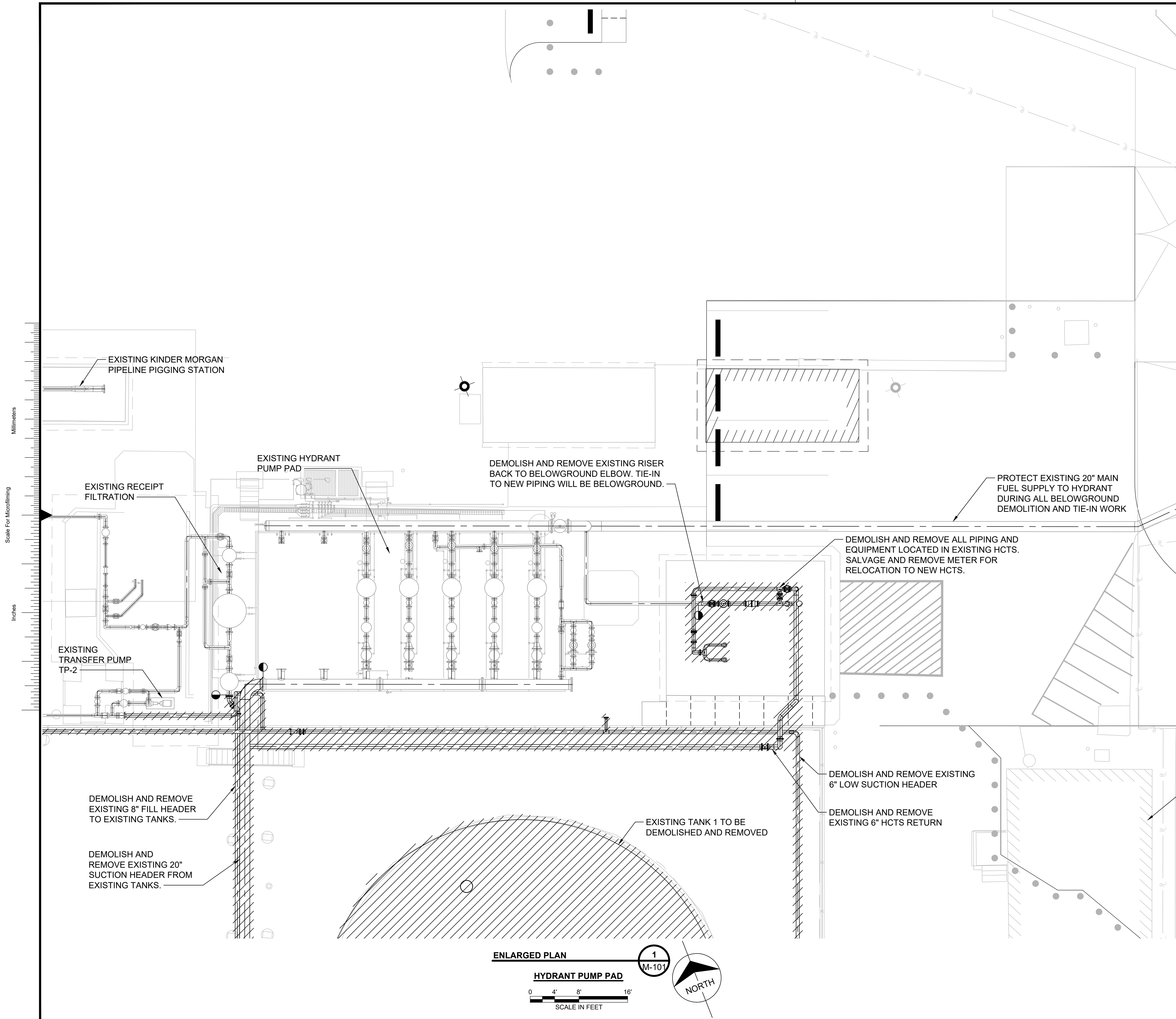


**FIGURE 3**

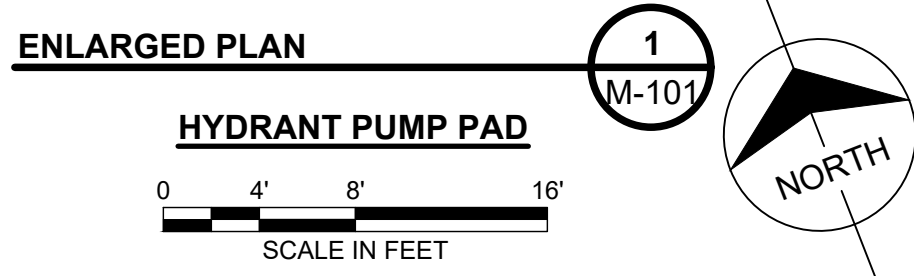
**MD401, ENLARGED DEMOLITION PLAN HYDRANT PUMP PAD**

**NOTES:**

1. SEE DRAWINGS M-001 AND M-002 FOR ABBREVIATIONS, SYMBOLS, INSTRUMENTATION, AND GENERAL FUELING AND PHASING NOTES.
2. THE DRAWINGS INDICATE THE VARIOUS PIPING SYSTEMS SCHEMATICALLY AND DO NOT ATTEMPT TO SHOW EXACT DETAILS OF ALL PIPING.
3. ALL DIMENSIONS ARE IN INCHES UNLESS OTHERWISE INDICATED. ALL DIMENSIONS SHOWN TO CENTERLINE OF PIPE UNLESS OTHERWISE INDICATED.
4. NOT ALL SMALL BORE PIPING REQUIRED IS SHOWN ON PLANS AND SECTIONS FOR CLARITY. SEE MECHANICAL P&ID DRAWINGS FOR ADDITIONAL REQUIREMENTS.



Scale For Microfinishing  
Millimeters  
Inches



no.	date	by	ckd	description
A	12/21/23	DLW	JJB	ISSUED FOR PERMIT
B	05/10/24	DLW	JJB	PERMIT REVISION 1

**ISSUED FOR PERMIT ONLY**

**BURNS MEDONNELL**  
 9400 WARD PARKWAY  
 KANSAS CITY, MO 64114  
 816-333-9400  
 Burns & McDonnell Engineering Co., Inc.

date	06/07/2023	detailed	H. HARMON
designed	D. WOODWARD	checked	J. BURD

**PDX FUEL COMPANY L.L.C**  
 PORTLAND INTERNATIONAL AIRPORT  
 5000 NE MARINE DR.  
 PORTLAND, OREGON 97218

**PDX FACILITY IMPROVEMENTS**  
 ENLARGED DEMOLITION PLAN  
 HYDRANT PUMP PAD

project	153929	contract	
drawing	<b>MD401</b>	rev.	<b>B</b>



file 153929MD401.DWG