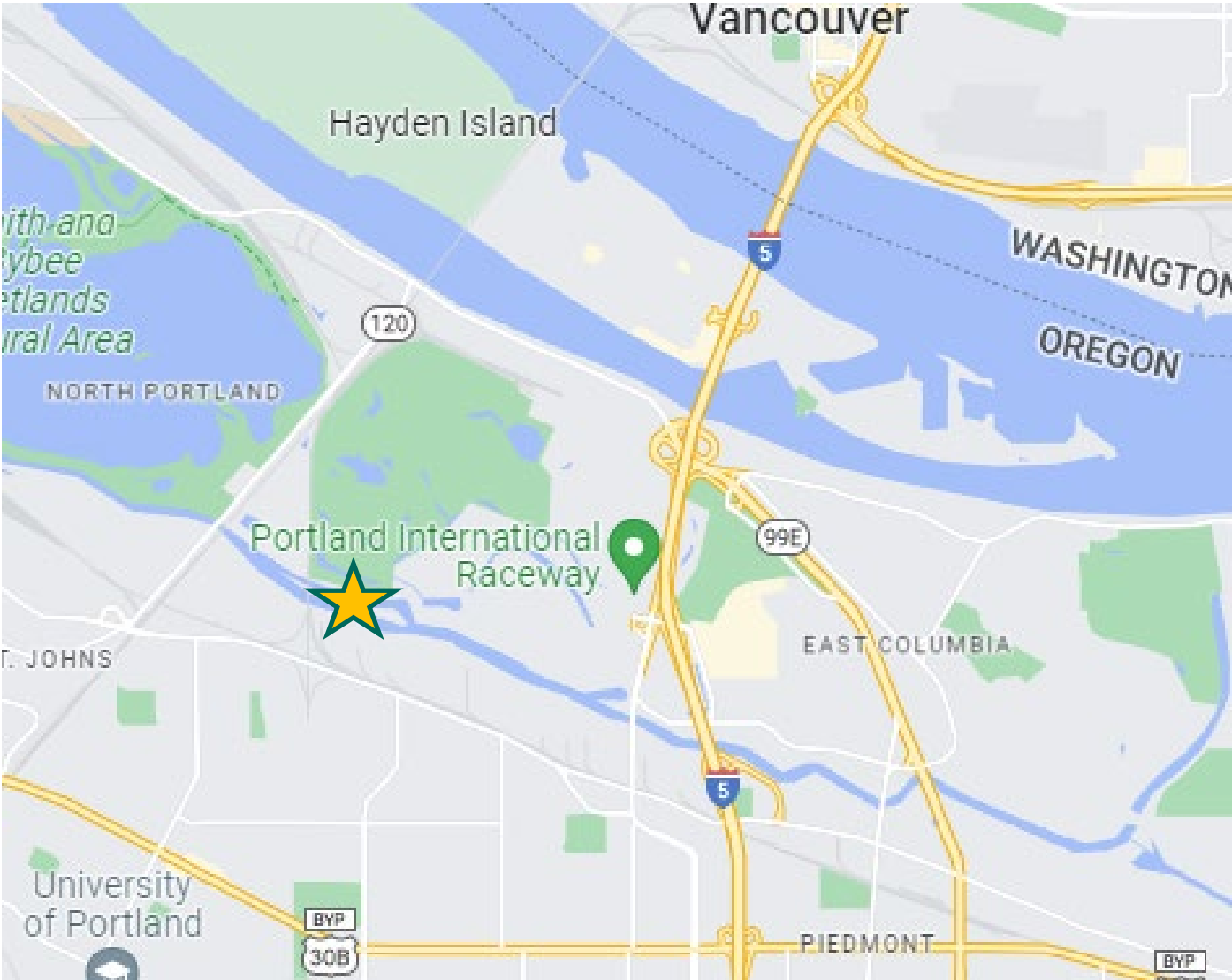


Moore and Wright Islands Natural Area Sediment Cleanup Brownfield

Columbia Slough, Portland



US EPA Brownfield Grant
Community Meeting
July 17, 2024
5:30pm



Agenda

Welcome/Introductions

Columbia Slough & Pacific Carbide Background

Overview of EPA Brownfield Grant

M&W Islands Sediment Cleanup

What to expect

How to stay informed/involved

Open Discussion/Questions



Introductions & Partners

- Department of State Lands
 - Barbara Park-Poage, Project Administration

- Department of Environmental Quality
 - Sarah Miller, Heidi Nelson, Project Manager/Engineer



Project Partners



Columbia Slough Background

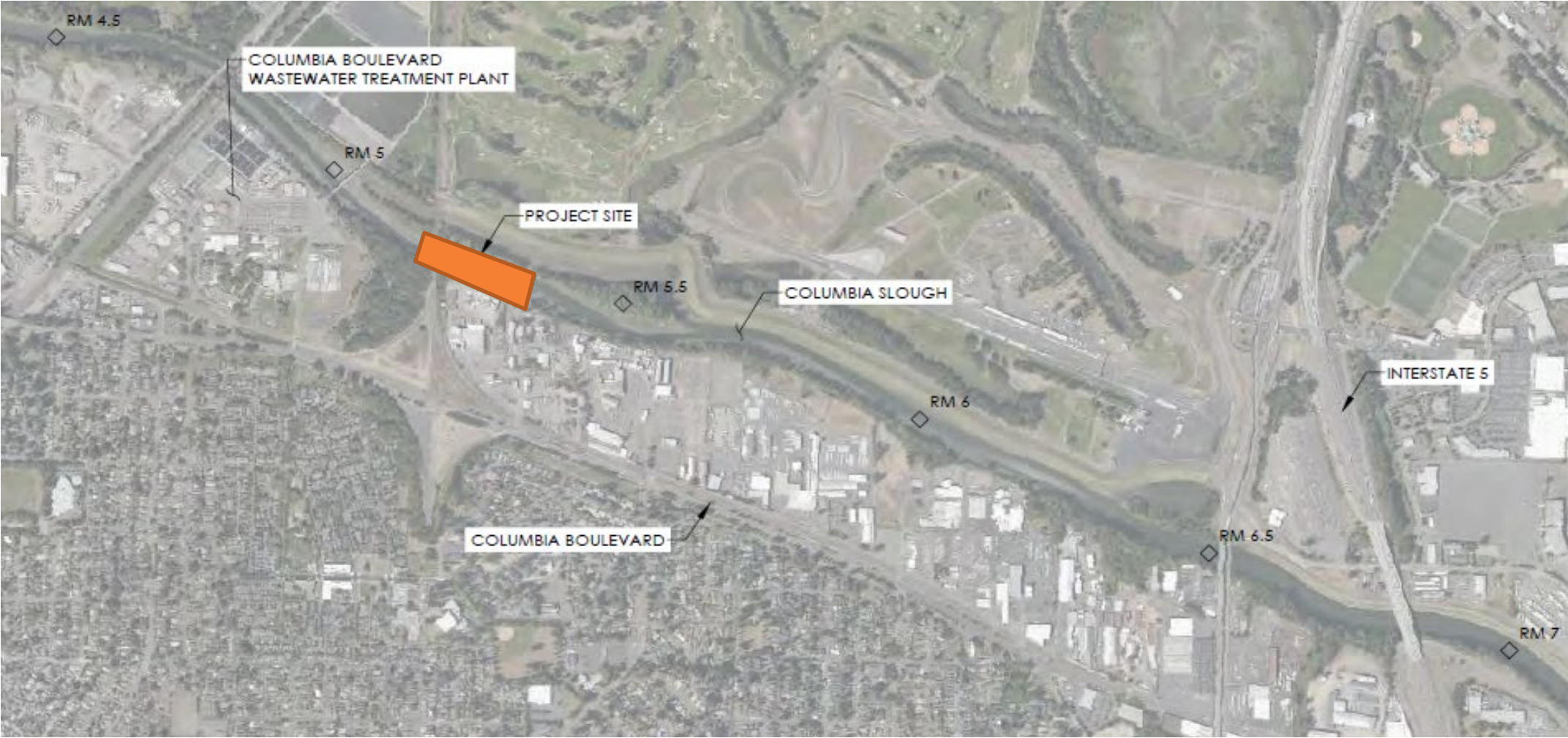
- Sediment contamination
- Fish Consumption Advisory 1994

2005 DEQ cleanup plan

- Conduct cleanup at individual sediment ‘hotspots’
- Pollution prevention to the Slough(stormwater)
- Monitor conditions over the long term
- Many partners- community, City of Portland, CSWC, Mult. Drainage District, private parties, etc.

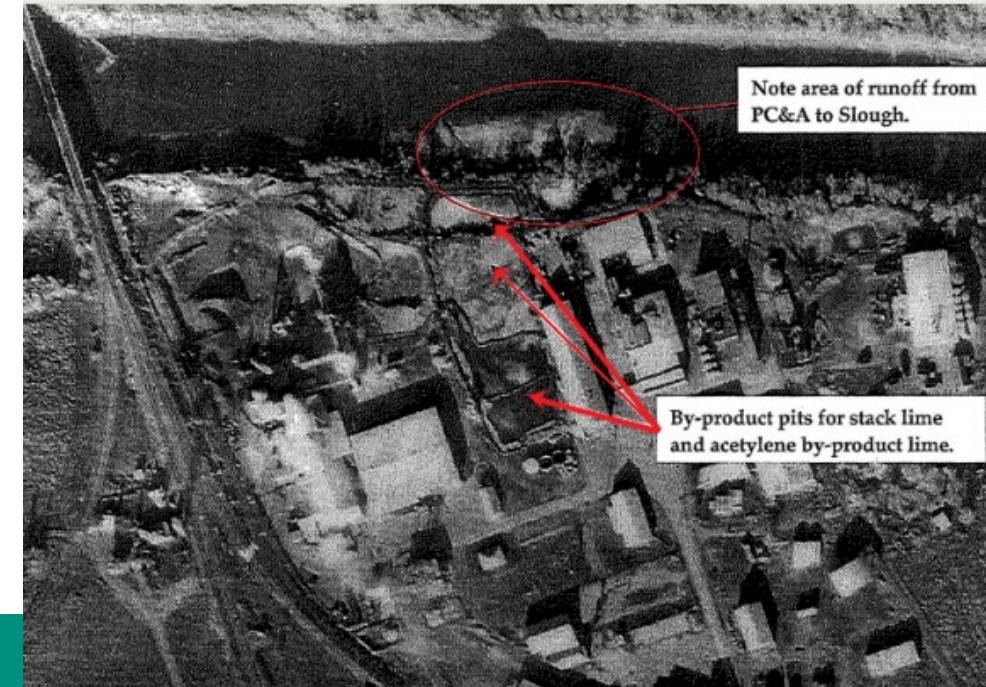


Moore & Wright Islands Sediment Area



Pacific Carbide Background

- Calcium carbide manufacturing plant (1940s-1987)
- Wastes stored onsite settling basins adjacent to slough
- Discharge pipes and bank failures between basins and slough prior to 1970s
- Contaminants include: PAHs, PCBs, metals, and significant calcium

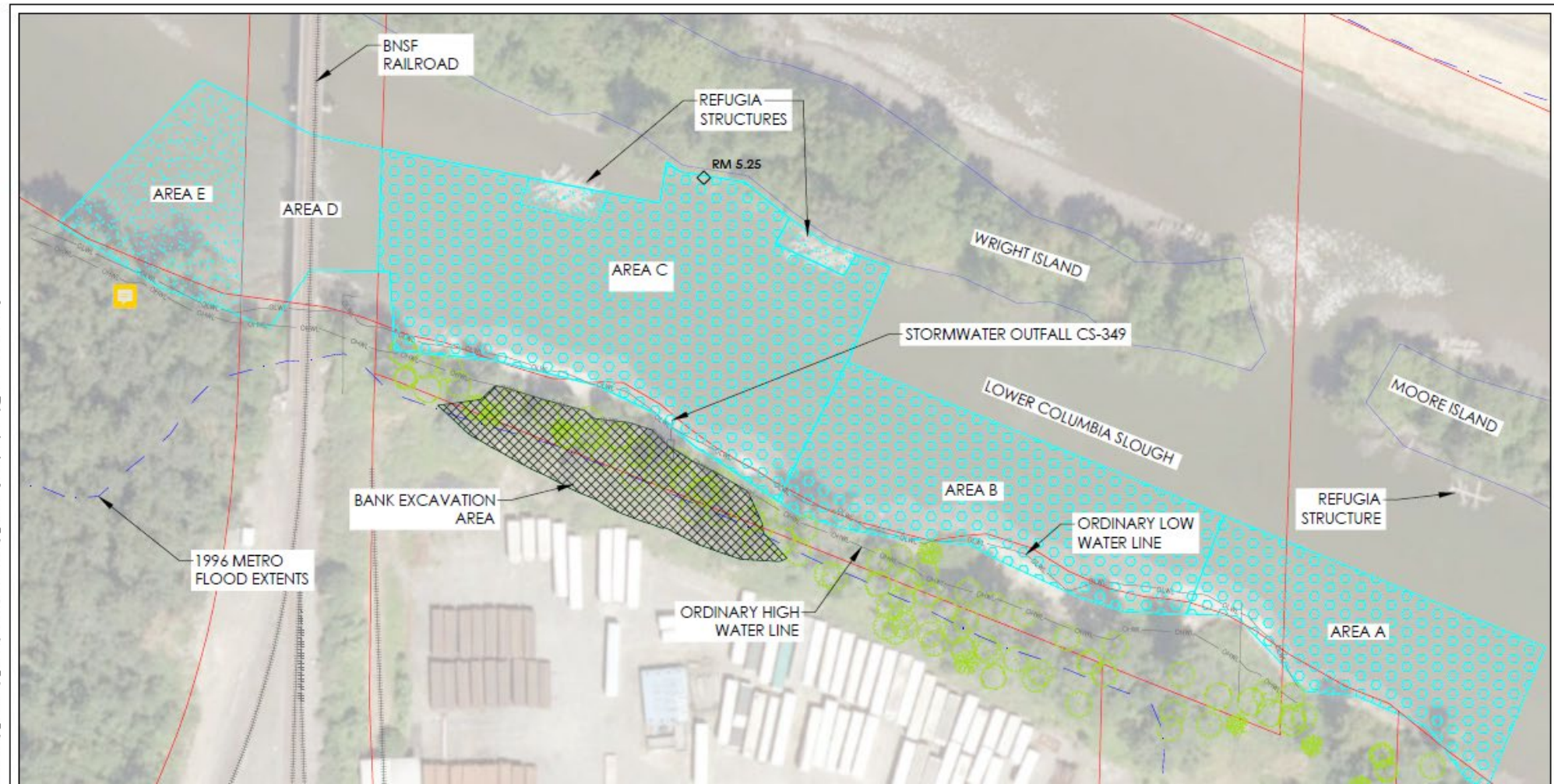


Pacific Carbide + DEQ Cleanup Program

- 2003: Entered DEQ's Cleanup Program, conducted upland characterization & limited sediment characterizations.
- 2013: Pacific Carbide entered into legal agreement to implement upland remedy and settle for in-water contamination.
- 2015: DEQ takes over in-water portion. Upland source control complete.
- 2015-2022: Sediment characterization & design work.
- 2021: DEQ declares sediments an 'orphan' site.
- **2023: DSL/DEQ receive \$1Million EPA Brownfield Cleanup Grant**

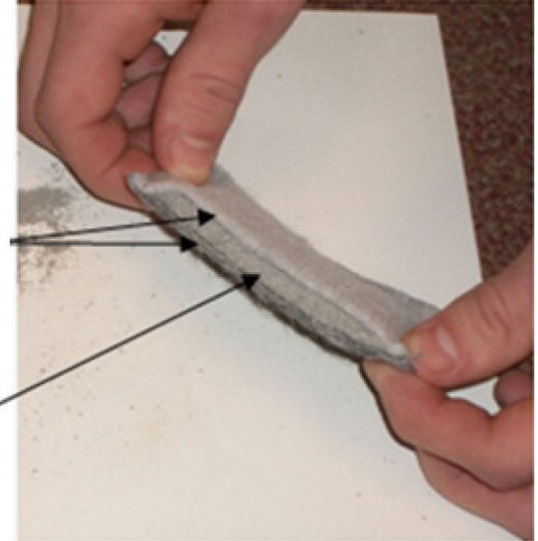
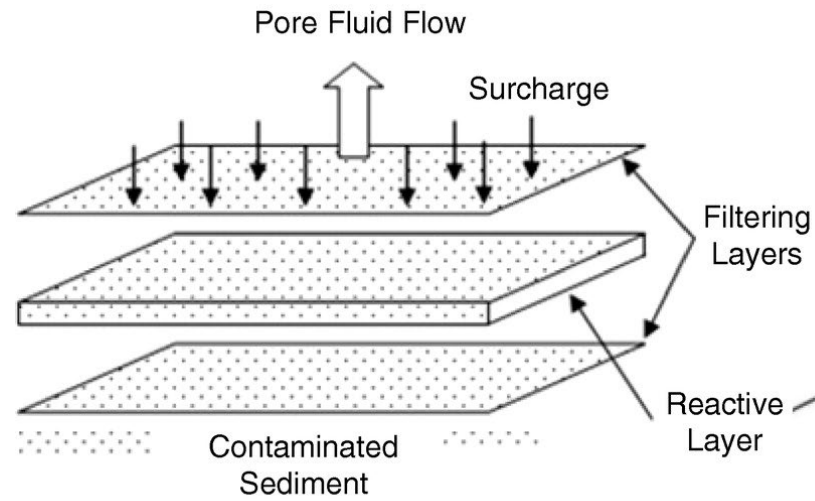


Selected Moore & Wright Islands Cleanup



Cap materials used

- Reactive Core Mat & habitat layer
 - (similar to CD Greenway)



- Activated Carbon amended Sand
 - (E. Whitaker Pond)



ACTIVATED CARBON

EPA Brownfield Grant



- EPA Brownfield Grants-
 - DSL/DEQ receive \$1Million EPA Brownfield Grant in 2023
 - Active cleanup of environmental contaminants
 - **Support environmental justice**
 - **Community engagement**
 - Measurable environmental progress



Promote Environmental Justice

- Census data confirms North Portland environmentally overburdened, underserved community.
- Long term- project will reduce risk of consuming contaminated fish
- Short term- improve access to high-quality natural areas offering safer outdoor recreation.

သတိပေးခွင့်
注意
Kapas auchea
တပ်လီ
ကမ္ဘာ့ဗဟို
चेतावनी
Avertizare
Предупреждение
Advertencia
Digniin
Увага
Cảnh báo

WARNING!

**Fish Smart.
Eat Safe.**



Fish from the Columbia Slough may be harmful to eat

DO NOT EAT
Throw away head, skin, tail, guts, and fats. Fats have more pollutants.



OKAY TO EAT
Eat only fillets 1 time each month.



WHO IS MOST AT RISK?
Mothers, babies, small children



FOR MORE INFORMATION
City of Portland
Bureau of Environmental Services
www.portlandoregon.gov/bes/FishAdvisory



Oregon Health Authority
www.healthoregon.org/fishadv

FOR TRANSLATION AND OTHER SERVICES
Call 503-823-7740



ENVIRONMENTAL SERVICES
CITY OF PORTLAND
working for clean rivers



Community Engagement



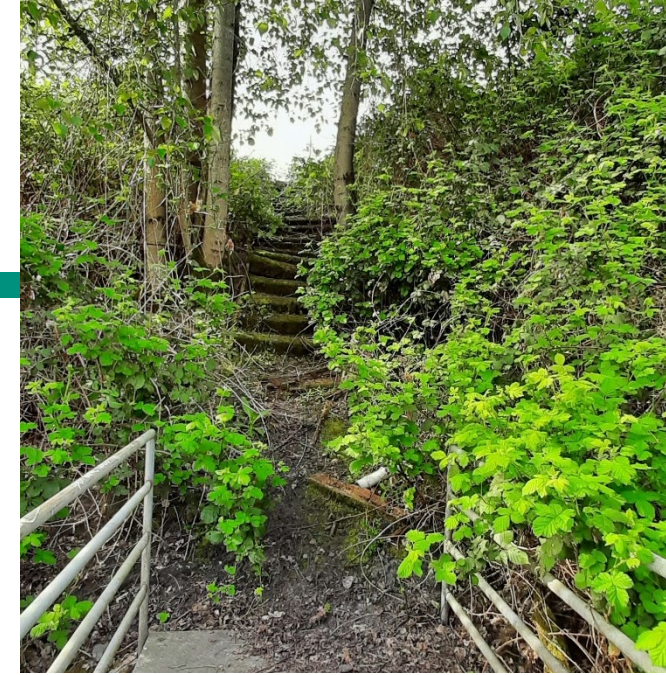
- Public Engagement Plan-
 - 7 community meetings facilitated by Columbia Slough Watershed Council
 - Support at least 2 field trips during project implementation for environmental workforce training, focus on local and underserved communities
 - Funds for undergraduate intern summer 2025 via OSU SeaGrant
 - Participate in workshop/kayak trip with City of Portland, CSWC and community members



Next Steps

Jan/Feb 2025: Preparatory work

- Vegetation clearing at south bank
- Erosion controls
- Reuse of cut logs along bank for habitat



Summer 2025: In-water construction and bank excavation

- In-water cap placement
- Bank soil removal
- Bank re-vegetation
- Community education activities

What to Expect- Jan/Feb 2025



What to Expect June-September 2025



Long Term Controls & Remedy Protection

- Easement
- Utility registry- 811
- Bathymetry survey after cap installation.
- Signs



Measuring Environmental Progress

- Sediment/fish tissue sampling (2025-2027).
- Benthic invertebrate study pre-/post-cap installation.
- Survival rate of bank vegetation.



How to stay informed

- www.ordeq.org/columbiasloughcleanup

- [view the presentation](#)

More information

- [Moore & Wright Islands Natural Area Sediments Cleanup Story Map](#)
- [Columbia Slough Annual Report](#)
- [Columbia Slough Sediment Project Story Map](#)
- [Fish advisory updates](#)
- [Get involved at Columbia Slough.org](#)
- Fact sheet: [Settlement Agreement With City of Portland](#)
- Fact sheet: [Columbia Slough Sediment Update](#)
- Fact sheet: [Columbia Slough Cleanup near Moore and Wright Islands](#)
- [City of Portland Columbia Slough Sediment Program](#)

- Columbia Slough Watershed Council

Wrap up and Questions

www.ordeq.org/columbiasloughcleanup

- Sarah Miller
 - 503-229-5040
 - sarah.miller@deq.oregon.gov
- Heidi Nelson
 - 503-229-6802
 - Heidi.neson@deq.oregon.gov
- Barbe Park Poage
 - barbara.poage@dsl.oregon.gov



Public Engagement Meeting 7/17/2024 via CSWC

Participants –

Krysta MFA

Heather King, CSWC

Deb Goldberg, DEQ

Sarah Miller, DEQ (Presenter)

Barbara Poage, DSL

Margaret Olsen, EPA

Andrew Davidson, City of Portland

Heidi Nelson, DEQ

Keith Kroeger (citizen)

Naomi (Citizen)

Kara Master (Citizen)

Anna (Citizen)

Connie (Citizen)

Zora (Citizen)

Iphone participants (Citizen)

Meeting minutes:

Sarah Miller - Started at 5:33pm – Introductions – presentation will be recorded. Questions and answers are at the end of the meeting.

Thanks everyone for attending. Share exciting project for 2025. Ground rules were presented. Questions at the end. Memorialize the questions can be place in the chat. Sarah will start the recording.

Sarah completed the presentation – went through the agenda – and following slides.

Questions –

Kieth Kroeger – How are the remedial action levels developed and are there similar to Portland Harbor Superfund Site?

- A. Cleanup concentration were developed in 2005 – they are a combination of risk-based pathways for bioaccumulation to human health and it's a combination of background levels and addressing those bioaccumulation risk drivers. For the members online, the risk-based number and baseline are the urban baseline values.

Were any tribes involved in the process? The in-water work window in the Columbia are later – is it different in this area of the slough.

- A. The tribes were not involved directly in this project, although they have been notified of the work, but not directly involved. The in-water work window, we have to go through all permitting process so for the slough it is the earlier window and meeting the deadlines. The in-water work window is July 15- Sept 15.

Zora – Area is a very frequent beaver habitat and those families?

- A. Wildlife are using the area – and we will have biologists that are contracted to verify the animals are relocated and/or protected before the work is completed. There are turtles and from ODFW transit through the area and haven't seen nesting in this particular area – and the sediments are evaluated – if they are beavers the biological consultant will be handling the critters.

There are very different projects where beavers were removed and it is a different approach. There is a TASS site over 200 feet away in tiny homes and RVs. The transportation and truck removal to landfill – are the trucks capped and what route will they take. Whole area will be super-impacted by traffic. Any collaboration between projects?

- A. Trucks route will be determined and the trucks will be covered. the timing is tricky with the in-water work window and no other coordination has been conducted, but when the projects get closer because traffic is an important issue.

How the unhoused community will be involved? Informing trusted groups in the area. And trust for the government is not very high.

- A. We are working on the community engagement plan and we will definitely need to provide information to the unhoused community and people living along the slough to know what the details will be involved in. We are trying to work with groups that are already established, so there is a way to already get the information to the existing networks.

Reach out to Zora who can connect DEQ with the groups.

Where will be the signs for the kayakers and the people?

- A. This is to be determined. And that will be distributed and we will have some input from the different groups and it will be posted during the events and monitored to ensure the signs are still there.

Does the community plan include any additional options other than a website? What other communication members are we using?

- A. We recognize not everyone has access to the internet. We are looking at flyers posting in multiple locations with multiple languages, we are planning to put them maybe near the fish advisory signs, since they are already out there. We are planning to do several outreach events and slough gatherings to get the word out too.

Sarah thanked Zora for her questions.

Sarah asked for additional questions. There will be more community meetings – appreciate everyone attending.

Naomi – how are other people able to have access who aren't in the CSWC circle?

- A. We'd like to get the information out to the neighborhood associations. We also send a note on Gov Delivery for the meeting. Heidi added that we will be hosting some in-person meetings that are also hybrid and locating flyers in the community at areas where we can also get the word out.

Feel free to email Sarah – contact information is online and find us on the web – or connect to provide information for the project. Thanks to the watershed for hosting tonight.

Meeting ended at 6:21pm.