

Remedial Action Completion Report

205 Auto Salvage Site, 5605 NE 105th
Avenue, Portland, Oregon

Final

Prepared for:

205 Real Estate Inc.

December 22, 2023

Project No. M0106.30.001

Prepared by:

Maul Foster & Alongi, Inc.

3140 NE Broadway, Portland, OR 97232

© 2023 Maul Foster & Alongi, Inc.



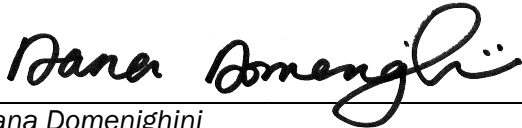
M A U L
F O S T E R
A L O N G I

Remedial Action Completion Report

205 Auto Salvage Site, 5605 NE 105th Avenue, Portland, Oregon

*The material and data in this report were prepared
under the supervision and direction of the undersigned.*

Maul Foster & Alongi, Inc.



Dana Domenighini
Project Environmental Scientist

Ted Wall, PE
Vice President

Contents

Abbreviations.....	v
1 Introduction.....	1
1.1 Purpose	1
1.2 Scope of Work.....	1
2 Background.....	1
2.1 Site Location, History, and Description	1
2.2 Nature and Extent of Contamination.....	2
3 Project Team and Organization	3
3.1 Project Team	3
3.2 Project Schedule.....	3
4 Remedial Action Activities.....	3
4.1 Preparatory Activities.....	3
4.2 Remedial Actions	4
4.2.1 Contaminated Soil Excavation	4
4.2.2 Dewatering.....	5
4.2.3 Contaminated Soil Loading, Transport, and Disposal.....	5
4.2.4 Leave Surface Sampling	5
4.2.5 Backfill.....	6
4.2.6 Geotechnical	6
4.2.7 Stormwater Pipe Decommissioning	6
4.3 Deviations from Design	6
4.3.1 Excavation Extents.....	7
4.3.2 Catch Basin Removal	7
4.3.3 Backfill.....	8
5 Certification Statement.....	8
6 Post-Remedial Action Next Steps	8
References	9

Limitations

Figures

1-1 Site Location

2-1 Site Overview and Features

Drawings

Table

4-1 Leave Surface Sample Analytical Results

Appendixes

Appendix A

Standard Operating Procedures

Appendix B

City of Portland Site Development Permit

Appendix C

Photograph Log

Appendix D

Disposal Documentation

Appendix E

Analytical Laboratory Report

Appendix F

Data Validation Memorandum

Appendix G

Import Materials Documentation

Appendix H

Geotechnical Report

Abbreviations

bgs	below ground surface
CMMP	contaminated media management plan
DEQ	Oregon Department of Environmental Quality
EPA	U.S. Environmental Protection Agency
HASP	health and safety plan
MFA	Maul Foster & Alongi, Inc.
mg/kg	milligram per kilogram
PCB	polychlorinated biphenyl
RBC	risk-based concentration
the Site	205 Auto Salvage Site, 5605 NE 105 th Avenue, Portland, Oregon
Telluric	Telluric Enterprises LLC
Terrageo	Terra-Geo, Inc.
Work Plan	Final Remedial Action Work Plan, 205 Auto Salvage Site, 5605 NE 105 th Avenue, Portland, Oregon

1 Introduction

Maul Foster & Alongi, Inc. (MFA) has prepared this completion report on behalf of 205 Real Estate Inc., to document the remedial actions completed at the 205 Auto Salvage site located at 5605 NE 105th Avenue in Portland, Oregon (the Site) (Figure 1-1). The Site is listed as Environmental Cleanup Site Information No. 2087.

1.1 Purpose

The purpose of this project was to remove surface soil at the Site where polychlorinated biphenyl (PCB) concentrations were detected in exceedance of the Site-established 0.56 milligrams per kilogram (mg/kg) cleanup level, as well as concentrations of arsenic above applicable Oregon Department of Environmental Quality (DEQ) risk-based concentrations (RCBs). This remedial action was completed in pursuit of a No Further Action determination for the Site by DEQ.

1.2 Scope of Work

To accomplish the above purpose, the scope of work described in the DEQ-approved *Final Remedial Action Work Plan, 205 Auto Salvage Site, 5605 NE 105th Avenue, Portland, Oregon* (Work Plan) (MFA 2023a) was followed. The scope of work included the following general tasks:

- Excavate up to two feet of impacted surface soil and dispose of it offsite.
- Collect leave surface soil samples in the excavations.
- Place a demarcation layer and clean backfill in the excavations.
- Decommission a stormwater pipe at the Site.¹

This report summarizes the work performed and includes a summary of analytical results compared to applicable screening levels, supporting documentation, and recommended next steps following the remedial actions (as applicable).

2 Background

2.1 Site Location, History, and Description

The Site is located in section 15, township 1 north, range 2 east of the Willamette Meridian in Portland, Oregon. The 4.21-acre Site comprises tax lots 1900 and 2000 and is currently occupied by

¹ The Work Plan did not include a discussion of decommissioning a stormwater pipe at the Site; however, the Drawings included in the Work Plan provided details regarding this remedial action.

two industrial/warehouse buildings and two auxiliary structures (see Figure 2-1). Since the 1970s, an auto salvage facility, known as 205 Auto Salvage, has operated on the Site. 205 Auto Salvage discontinued business in June 2022.

The Site's stormwater system currently consists of subsurface 6-inch perforated pipes located on the south side of the Site that run east to west to convey stormwater that infiltrates into the gravel to a swale/gully along the west side of the Site. The swale/gully conveys runoff into a retention pond located in the low point of the western boundary. The pond was equipped with an elevated catch basin outlet structure purportedly to help facilitate drainage to an adjacent pond on the adjoining property to the west.² During large storm events, significant ponding is observed in the vicinity of the catch basin and retention pond due to overflow onto the Site from the west-adjacent property.

2.2 Nature and Extent of Contamination

In March 2023, Evren Northwest, Inc. conducted an environmental site assessment on the Site which identified two areas of impacted soil: an area of elevated concentrations of arsenic and PCBs at 0.5 feet below ground surface (bgs) within the stormwater swale/gully and retention pond located along the western property boundary and elevated concentrations of arsenic at 2 feet bgs near a suspect infiltration feature located in the central portion of the Site (ENW 2023). The suspect infiltration feature was determined to be an 8-inch stormwater pipe that is connected to an open catch basin on the Site. The stormwater pipe terminates at a surface depression in the central portion of the Site where the pipe is exposed at the surface.

To further define the remedial action excavation area in the stormwater swale/gully and retention pond, MFA collected additional soil samples in July and August 2023 (MFA 2023b). MFA delineated seven grid cells (GC01 through GC07) for composite soil sampling within the stormwater retention system (see Figure 2-1). In each grid cell, one shallow soil sample was collected from 0 to 0.5 feet bgs and one deeper soil sample from 0.5 to 1-foot bgs. Six of the grid cells had concentrations of arsenic above the direct contact DEQ RBCs for occupational and construction workers at 0.5 and 1-foot bgs, while only one grid cell (GC07) had concentrations of arsenic above the direct contact RBC for occupational workers at 1-foot bgs. In addition, three grid cells (GC03 through GC05) had concentrations of PCBs above the Site-established cleanup level at 0.5 and 1-foot bgs.

The locations of MFA's samples were used to inform the excavation extent associated with the stormwater retention system along the western boundary of the Site, while the field-observed location of the daylighting pipe was used to inform the excavation extent at the suspect infiltration feature.³

² This structure was later found to be non-functioning (see Section 4.3.2).

³ Note that the stormwater pipe terminus was located as shown in Figure 2-1 of this report, which differs from that shown in prior Evren Northwest, Inc. figures.

3 Project Team and Organization

This section provides the project team organizational structure, responsibilities, and lines of authority, as well as the schedule for completing the remedial action activities.

3.1 Project Team

The project organization, reporting relationships, and lines of communication related to the remedial action executed at the Site are as follows:

- **205 Real Estate Inc.**—205 Real Estate Inc. is the current owner of the Site. 205 Real Estate Inc. is responsible for the implementation, operations, and maintenance of the remedial action pursuant to the Work Plan. 205 Real Estate Inc. has authority over work completed on the Site, including overall project management, contract administration, and project funding.
- **DEQ**—DEQ is the primary regulatory authority. DEQ reviewed and approved the Work Plan associated with the remedial action and will review project closeout documents, including this completion report.
- **MFA**—MFA (the engineer) was responsible for project design and overseeing remedial action implementation for conformance to the approved design.
- **Telluric Enterprises LLC (Telluric)**—Telluric performed all remedial action activities including erosion and sediment control, excavation, and importing clean backfill material.
- **Terra-Geo, Inc. (Terrageo)**—Terrageo provided geotechnical engineering and testing services.
- **Apex Laboratories, LLC**—Apex Laboratories, LLC, provided analytical testing services.

3.2 Project Schedule

Telluric mobilized equipment and performed site preparation activities on November 25, 2023. Remediation work began on December 12, 2023, and was completed on December 22, 2023.

4 Remedial Action Activities

The remedial action activities performed to complete the scope of work identified in Section 1.2 are presented below.

4.1 Preparatory Activities

Site Health and Safety Plan (HASP). A site-specific HASP was prepared for the planned activities (MFA 2023c). The HASP was prepared in general accordance with the Occupational Safety and

Health Act and the Oregon Administration Rules. A copy of the HASP was maintained on site for use by MFA staff during the field activities.

Underground Utility Location. Prior to subsurface work, public underground utility locates were coordinated via the Oregon Utility Notification Center. On December 12, 2023, a private utility locate was conducted by Pacific Northwest Locating, LLC prior to excavation activities to locate potential underground utilities/structures in the excavation areas. A representative of MFA oversaw the private utility locate. Underground utility locates were completed in accordance with MFA Standard Operating Procedure 18 (see Appendix A).

Permitting. MFA obtained the required City of Portland site development permit prior to commencement of field activities. A copy of the permit is included in Appendix B.

Work Notification. MFA notified DEQ of the work schedule before the start of the remediation activities.

Erosion and Sediment Controls. Erosion and sediment controls were installed before remediation activities began. The following best management practices were installed and maintained throughout the remedial actions:

- Gravel was placed at the construction entrance to the work area for incoming and outgoing trucks.⁴
- Silt fencing was installed at the downgradient boundary of the work area along the western portion of the Site.
- One catch basin located in the stormwater retention pond was protected with a filter fabric beneath the grate. No other stormwater facilities were located on or near the work areas.

4.2 Remedial Actions

A representative of MFA oversaw the excavation and decommissioning activities to document the activities and to collect soil samples for chemical analysis. Daily remedial activities were documented in photographs and field notes kept on file by MFA. Key photographs are provided in Appendix C. The remediation activities were performed in general accordance with the Work Plan and in conformance with the City of Portland grading permit.

4.2.1 Contaminated Soil Excavation

Excavation of contaminated soil began on December 12, 2023, and was completed on December 13, 2023. Soil was excavated using a track mounted excavator. Excavation depths extended to two feet bgs. During excavation activities, soil was regulatory screened. Field screening included screening for the presence of volatiles in accordance with Standard Operating Procedure 3 (see Appendix A), using a photoionization detector, and visual and olfactory observations. Photoionization readings of soil headspace ranged from 0.1 to 0.8 parts per million. No olfactory or visual impacts were detected in soils removed from the excavations.

⁴ Site soils were not observed to be tracked to the roadway during remediation activities; therefore, the entrance/exit gravel pad was fully functional, and a wheel wash station was not warranted/constructed.

The base of the excavations were measured by MFA to verify that the required excavation depth had been met prior to backfill. MFA used a global positioning system unit and site observations to document the excavation boundaries. See Record Drawings for the final extent of the excavations.

4.2.2 Dewatering

Recent wet weather conditions resulted in water accumulating in the stormwater retention pond prior to the excavation activities beginning. The accumulated water in the excavation was pumped off by a vacuum truck operated by Telluric and stored in 275-gallon totes. Additional dewatering was performed throughout the excavation activities. A total of 2,750 gallons of water was pumped from the excavations and is stored on the Site pending future disposal.

4.2.3 Contaminated Soil Loading, Transport, and Disposal

Excavated soil was either loaded directly into trucks or temporarily stockpiled within the excavation limits and then loaded into trucks for off-site disposal. The trucks hauling excavated soil were covered during transport. Approximately 179 tons of contaminated soils were transported to the Waste Management landfill in Hillsboro, Oregon, for disposal (disposal tickets are provided in Appendix D).

4.2.4 Leave Surface Sampling

Following excavation activities, leave surface soil samples were collected: a 10-point composite sample was collected from the floor of the excavation in each grid cell, while one five-point composite sample was collected from the floor of the excavation for the suspect infiltration feature.

Leave surface soil samples from both excavations were analyzed for arsenic by U.S. Environmental Protection Agency (EPA) Method 6020B, with the stormwater retention system excavation also analyzed for PCBs by EPA Method 8082A.⁵ Analytical results are presented in Table 4-1. A copy of the analytical laboratory report is provided as Appendix E. Analytical results were reviewed for usability and were qualified consistent with EPA procedures and appropriate laboratory and method-specific guidelines. A data validation memorandum presents the quality assurance and quality control review of the data and is included as Appendix F. Based on the results of the data quality review, the data are acceptable for their intended use with the qualifiers assigned.

Soil sample results for arsenic were screened against the ingestion, dermal contact, and inhalation (soil direct contact) for occupational, construction, and excavation workers, while PCB results were screened against the Site-specific cleanup level of 0.56 mg/kg. Additionally, arsenic results were screened against DEQ's background metals concentration. The leave surface soil sample results are summarized as follows:

- **PCBs**—Three grid cells (GC02, GC03, and GC05) had concentrations of PCBs above the Site-established cleanup level (ranging from 0.67 to 4.19 mg/kg).

⁵ No indications of total petroleum hydrocarbon impacts were observed during field screening (see Section 4.2.1); therefore, additional analysis for total petroleum hydrocarbons, volatile organic compounds, and/or polycyclic aromatic hydrocarbons were not conducted.

- **Arsenic**—Detections of arsenic in one grid cell (GC05) and the suspect infiltration feature excavation were below the DEQ background metals concentration of 8.8 mg/kg.⁶ The remaining grid cells (GC01 through GC04, GC06, and GC07) had concentrations of arsenic ranging from 21.7 to 213 mg/kg, which exceeded the DEQ background metals value and the direct contact DEQ RBCs for occupational and construction workers.

4.2.5 Backfill

Prior to backfilling, a geotextile fabric was placed as demarcation along the entire base of each of the excavations. This demarcation layer acts as a visual barrier for people potentially conducting future soil-disturbing activities, informing them that additional considerations concerning handling and disposal of disturbed underlying soil may be required, as outlined in a Contaminated Media Management Plan (CMMP) to be developed for the Site.

Placement of backfill material began on December 13, 2023, and was completed on December 22, 2023. A 1 ½"-minus crushed rock was used to backfill the excavations. The clean backfill was placed in 8-inch lifts and compacted with the excavator tracks and bucket. Approximately 305 tons of clean backfill were imported from Portland Sand and Gravel, CalPortland, or Knife River. The suspect infiltration feature excavation was backfilled to original grade with 1 ½"-minus crushed rock, while the stormwater retention system excavation was backfilled with approximately 16 inches of 1 ½"-minus crushed rock, 6 inches of topsoil, and approximately 2 inches of ¾"- to 1 ½"-minus crushed rock on top of the topsoil for the final surfacing of the stormwater retention system excavation.⁷ Import tickets are included in Appendix G.

4.2.6 Geotechnical

Terrageo verified and documented that the backfill of the excavations were placed and compacted as outlined by the plans; the geotechnical report from Terrageo includes more detailed information (see Appendix H).

4.2.7 Stormwater Pipe Decommissioning

On December 14, 2023, the 8-inch stormwater pipe located in the central portion of the Site was decommissioned in place by plugging the daylighting end of the line with fast-setting concrete (see attached Record Drawings).

4.3 Deviations from Design

MFA and Telluric encountered site conditions and weather that caused deviations from the Work Plan and approved City of Portland grading permit. All changes were approved by the engineer prior to implementation (as applicable), and DEQ was informed of the changes at the time of discovery.

⁶ Metals occur naturally in soil; therefore, arsenic data were first compared to the DEQ-established background concentrations. Metals results below background metals criteria and above DEQ RBCs were not considered RBC exceedances.

⁷ This final configuration of the backfill (i.e., topsoil covered with gravel) is a result of the timing of backfilling activities and the decision by the City of Portland that gravel is a suitable final cover for the excavation (see Section 4.3.3).

4.3.1 Excavation Extents

The Remedial Action Plan and overall approach relied, in part, on the 2014 *Final Removal Action Completion Report, Marx Street Facility, 10103 NE Marx Street, Portland, Oregon* (SLR 2014) which stated, “The [Marx Street] site has been graded to divert stormwater away from the East Pond in a manner that the only stormwater that enters the East Pond is from the neighboring properties to the east [i.e., the 205 Auto Salvage site] and south of the pond. No stormwater from the [Marx Street] site enters the East Pond, however, stormwater from the East Pond is piped to the West Pond and also is discharged to Johnson Lake.” (SLR 2014). For ease of orientation and to correlate with the 2014 SLR report, the two ponds on the west-adjacent Marx Street property will be referred in this report to as the East Pond and the West Pond, respectively.

Contrary to the findings in the 2014 SLR report, during dewatering activities, water from the adjacent East Pond on the adjoining Marx Street property began infiltrating under the fence line and accumulating in the stormwater retention system excavation area. Water from the East Pond also flowed into the excavation area when the storm line was breached (See Section 4.3.2 below). To prevent this inflow from increasing and to maintain the integrity of the East Pond’s sidewall, i.e., avoid soil collapse and pond discharge onto the Site, the excavation boundaries were adjusted to provide a three- to four-foot buffer between the fence line and the excavation’s western boundary, with a length of approximately 60 feet (see Record Drawings). Consequently, the grid cell boundaries for GC01 through GC05 were also adjusted and leave surface sampling was completed within the new extents (see Record Drawings).

Additionally, the global positioning system used to mark the extent of the excavation malfunctioned during the excavation of grid cells GC06 and GC07. As a result, the boundaries of the excavation were inadvertently expanded (see Record Drawings), and an additional 50 tons of soil was excavated from these two grid cells. Note that the final configuration of the excavation boundaries incorporated all seven grid cells originally proposed for removal. Leave surface sampling was adjusted to include the new extents of grid cell GC06 and GC07(see Record Drawings). The additional soil tonnage is included in the 179 tons of soil listed in Appendix D.

4.3.2 Catch Basin Removal

During excavation activities conducted in the stormwater retention pond on December 12, 2023, a stormwater pipe located on the west side of the catch basin outlet structure that purportedly conveyed water from the Site stormwater pond to the East Pond sustained minor damage (a 4-inch laceration approximately ¼” inch in diameter). As a result of the damage to the pipe, water from the East Pond began to enter the excavation area. The pipe was promptly cut and plugged to prevent additional off-site water from entering the excavation. The accumulated water was pumped off by a vacuum truck and stored in two 275-gallon totes.

From conversations with the property owner and site observations, MFA identified that 1) the damaged stormwater line was the only connection to the catch basin, and 2) the stormwater line terminates at the property line. Additionally, as noted above, when the stormwater line was damaged, water flowed onto the Site and not off site to the East Pond. Based on these factors, MFA concluded that the system was substantially/fully non-functional as a conveyance system from the Site to the East Pond and, therefore, was of no value. The catch basin was removed, and the plugged stormwater line was abandoned in place.

4.3.3 Backfill

Hydroseeding of the stormwater retention system excavation was listed in the Work Plan to stabilize soils and restore initial conditions. However, due to concerns about the ability of the hydroseed to grow during the ongoing wet weather conditions and the majority of the Site currently being a gravel lot, the City of Portland concurred with and approved backfilling the excavation with ¾"- to 1 ½"- minus crushed rock to the pre-removal grade (see Section 4.2.5).

5 Certification Statement

The remedial action oversight and project engineering services described in this report were performed by MFA on behalf of 205 Real Estate Inc. Based on the observations made during the remediation work and final product constructed on site, it is the opinion of the engineer that the remedial action has been constructed in accordance with standard trade practices, in substantial compliance with the approved plans and technical specifications, and in accordance with the design intent as approved by DEQ.

6 Post-Remedial Action Next Steps

An area of subsurface soil with concentrations of arsenic and PCBs that exceed the arsenic background level of 8.8 mg/kg, the direct contact DEQ RBC for occupational and construction workers, and/or PCB cleanup level of 0.56 mg/kg were left in place at depths greater than two feet bgs in the stormwater retention system excavation along the western boundary of the Site. These areas include GC02, GC03, and GC05 for PCBs, as well as GC01 through GC04, GC06, and GC07 for arsenic. A clean soil cover of two feet was installed across this excavated area as shown on the Record Drawings. This clean soil cover prevents direct contact exposure of future occupants with the underlying soil in this area of the Site. In addition to the soil cover, a demarcation layer has been placed across the entire excavation area where soil was removed to two feet bgs. This demarcation acts as a visual barrier to discourage disturbance of underlying soil, for example by construction workers.

A CMMP will be developed to outline procedures for interacting with soil underlying the demarcation layer if disturbance or maintenance activities are planned in this area of the Site. It will also address the soil buffer adjacent to the excavated area described in Section 4.3.1.

With DEQ approval of this completion report and the CMMP, the Site owner will request a No Further Action determination from DEQ.

References

- ENW. 2023. *Draft Focused Phase II Environmental Site Assessment, Industrial Property, 5605-5621 NE 105th Avenue, Portland, Oregon*. Prepared for Blackstone Consulting. Evren Northwest, Inc. May 19.
- MFA. 2023a. Dana Domenighini and Ted Wall, Maul Foster & Alongi, Inc. *205 Auto Salvage, 5605 NE 105th Avenue, Portland, Oregon—Site Investigation Work Plan*. Letter to Rebecca Digjustino, Oregon Department of Environmental Quality. July 10.
- MFA. 2023b. Dana Domenighini and Ted Wall, Maul Foster & Alongi, Inc. *205 Auto Salvage, 5605 NE 105th Avenue, Portland, Oregon—Site Investigation*. Letter to Garry Gossett, 205 Real Estate, Inc. December 19.
- MFA. 2023c. *Health and Safety Plan, 205 Auto Salvage, 5605 NE 105th Avenue, Portland, Oregon*. Prepared for 205 Real Estate, Inc. Maul Foster & Alongi, Inc.: Portland, OR. November 30.
- SLR. 2014. *Final Removal Action Completion Report, Marx Street Facility, 10103 NE Marx Street, Portland, Oregon*. Prepared for IMACC Corporation. SLR International Corp. April.

Limitations

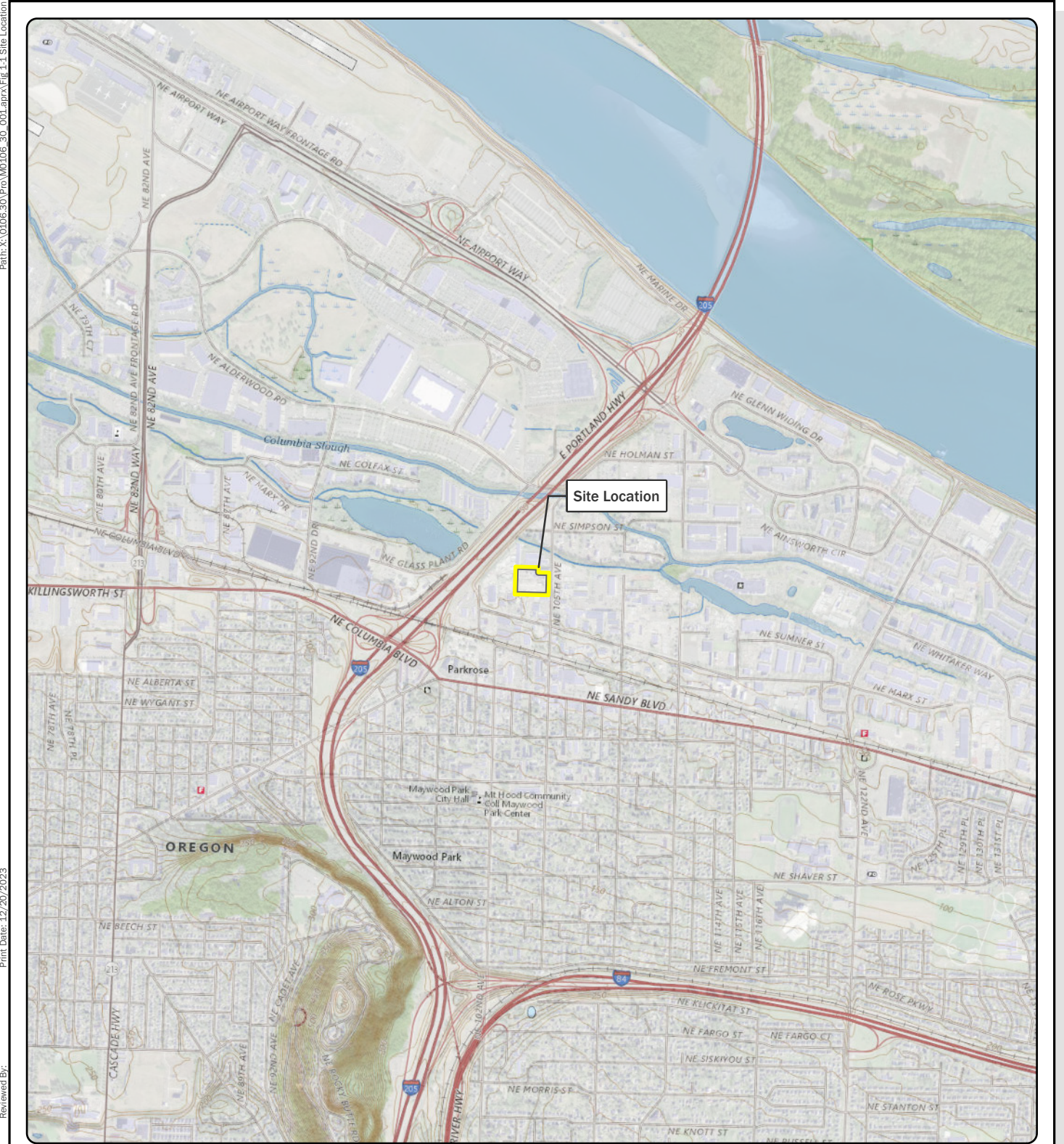
The services undertaken in completing this report were performed consistent with generally accepted professional consulting principles and practices. No other warranty, express or implied, is made. These services were performed consistent with our agreement with our client. This report is solely for the use and information of our client unless otherwise noted. Any reliance on this report by a third party is at such party's sole risk.

The information and findings in this report apply to conditions existing when services were performed and are intended only for the client, purposes, locations, time frames, and project parameters indicated. We are not responsible for the impacts of any changes in environmental standards, practices, or regulations subsequent to performance of services. We do not warrant the accuracy of information supplied by others, or the use of segregated portions of this report.

Figures



MAUL
FOSTER
ALONGI



Notes
 U.S. Geological Survey 7.5-minute topographic quadrangle (2020): Mount Tabor.
 Township 1 north, range 2 east, section 15.

Data Source
 Property boundary obtained from Oregon Metro (2023).

MAUL FOSTER ALONGI
 p. 971 544 2139 | www.maulfooster.com


Legend
 Site boundary

Figure 1-1
Site Location
 5605 NE 105th Ave
 Portland, OR

This product is for informational purposes and may not have been prepared for, or be suitable for legal, engineering, or surveying purposes. Users of this information should review or consult the primary data and information sources to ascertain the usability of the information.
 © 2023 Maul Foster & Alongi, Inc.

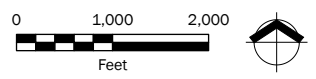






Figure 2-1 Site Overview and Features

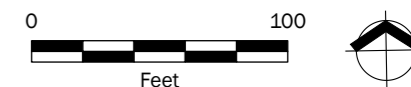
5605 NE 105th Ave
Portland, Oregon

Legend

-  Catch basin
-  8-inch Stormwater Pipe
-  Arsenic Impacted Area
-  Grid Cell
-  Site Boundary



Notes
The arsenic impacted area was adjusted to the location of where the 8-inch stormwater pipe terminates at the surface, which differs from that shown on prior Evren Northwest Inc. figures.



Data Sources
Aerial photograph obtained from City of Portland (2022).

 MAUL FOSTER ALONGI
p. 971 544 2139 | www.maulfooster.com

This product is for informational purposes and may not have been prepared for, or be suitable for legal, engineering, or surveying purposes. Users of this information should review or consult the primary data and information sources to ascertain the usability of the information.
© 2023 Maul Foster & Alongi, Inc.

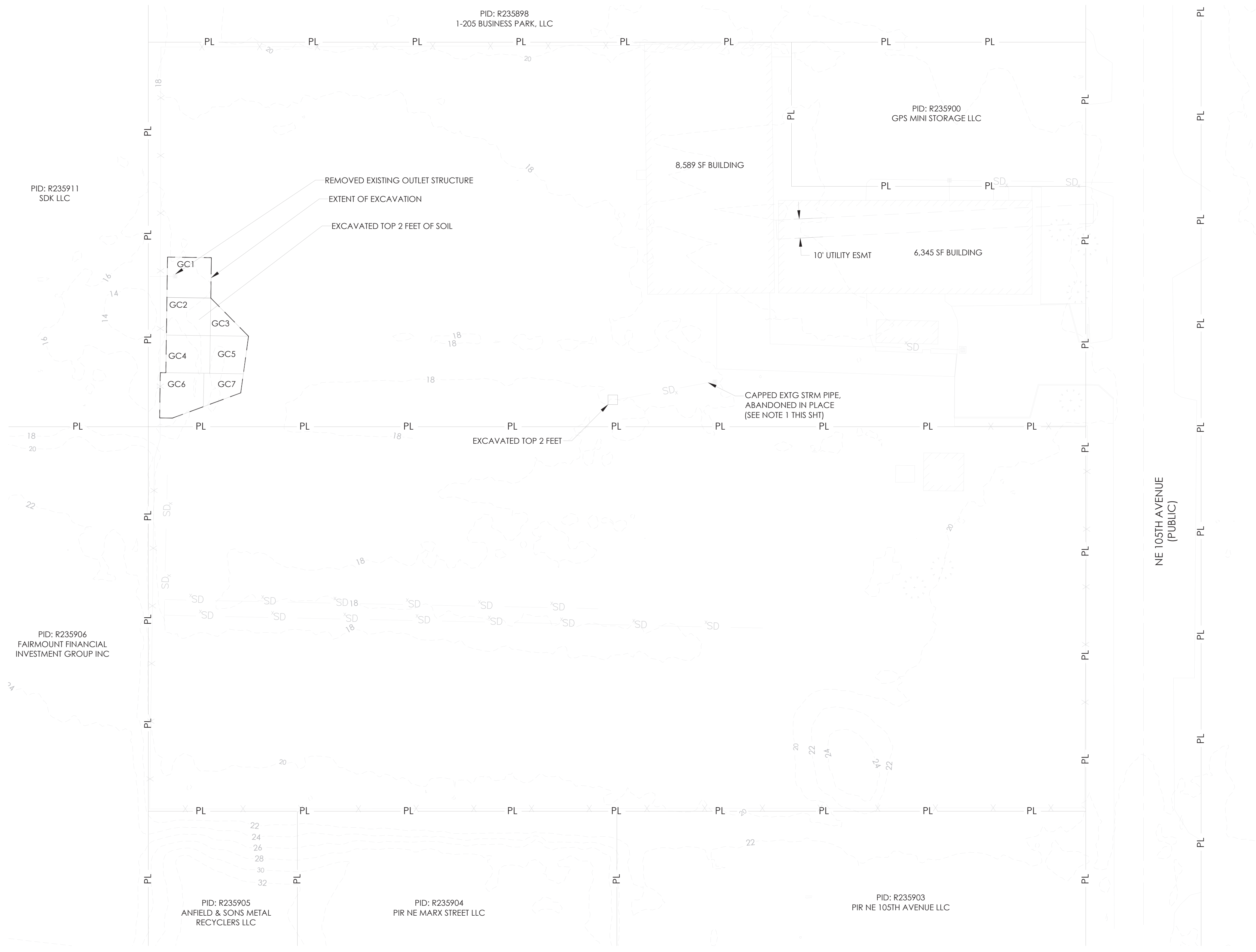
Print Date: 12/20/2023
Produced By: jelsirott
Reviewed By: ddomenighini
Project: W0106.30.001
Path: X:\0106.30\Pro W0106.30_001.aprx, Fig 2-1 Site Overview and Features

Drawings



MAUL
FOSTER
ALONGI

PLOTTED ON: 2023-12-22 11:27 AM
 PLOTTED BY: tbr-tackett
 FILENAME: G:\00_MVA_CH\3D\00_PROJECT\0186_30 James C. Brown & Associates\PLANS\ASBUILT\CTI EXCAVATION AND STORMWATER DECOMMISSIONING.dwg



NOTES:
 1. STORMWATER PIPE WAS ABANDONED WITH A FAST-SETTING CONCRETE PLUG THAT WAS POURED AROUND AND IN THE END OF THE PIPE FOR A DISTANCE OF TWO PIPE DIAMETERS.

MAUL FOSTER ALONGI
 3140 NE BROADWAY STREET
 PORTLAND, OR 97232
 PHONE: 971.544.2139
 www.maulfooster.com



205 AUTO SALVAGE REMEDIAL ACTION
205 REAL ESTATE, INC.
 TROUTDALE, OREGON

ISSUE	DATE	DESCRIPTION
C	12/22/2023	AS-BUILT
B	10/10/2023	REVISED PER MVA PLAN SET
A	10/05/2023	PERMIT DOCUMENTS

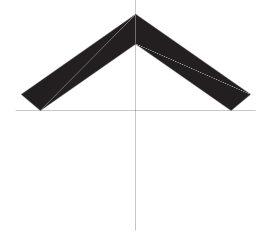
PROJECT: M0106.30.001
 DESIGNED: B. TACKETT
 DRAWN: B. TACKETT
 CHECKED: T. WALL



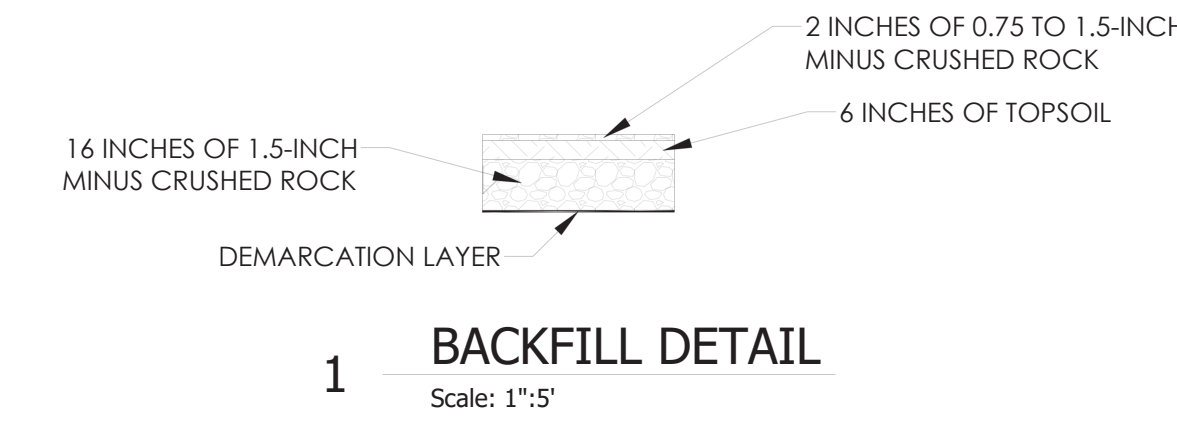
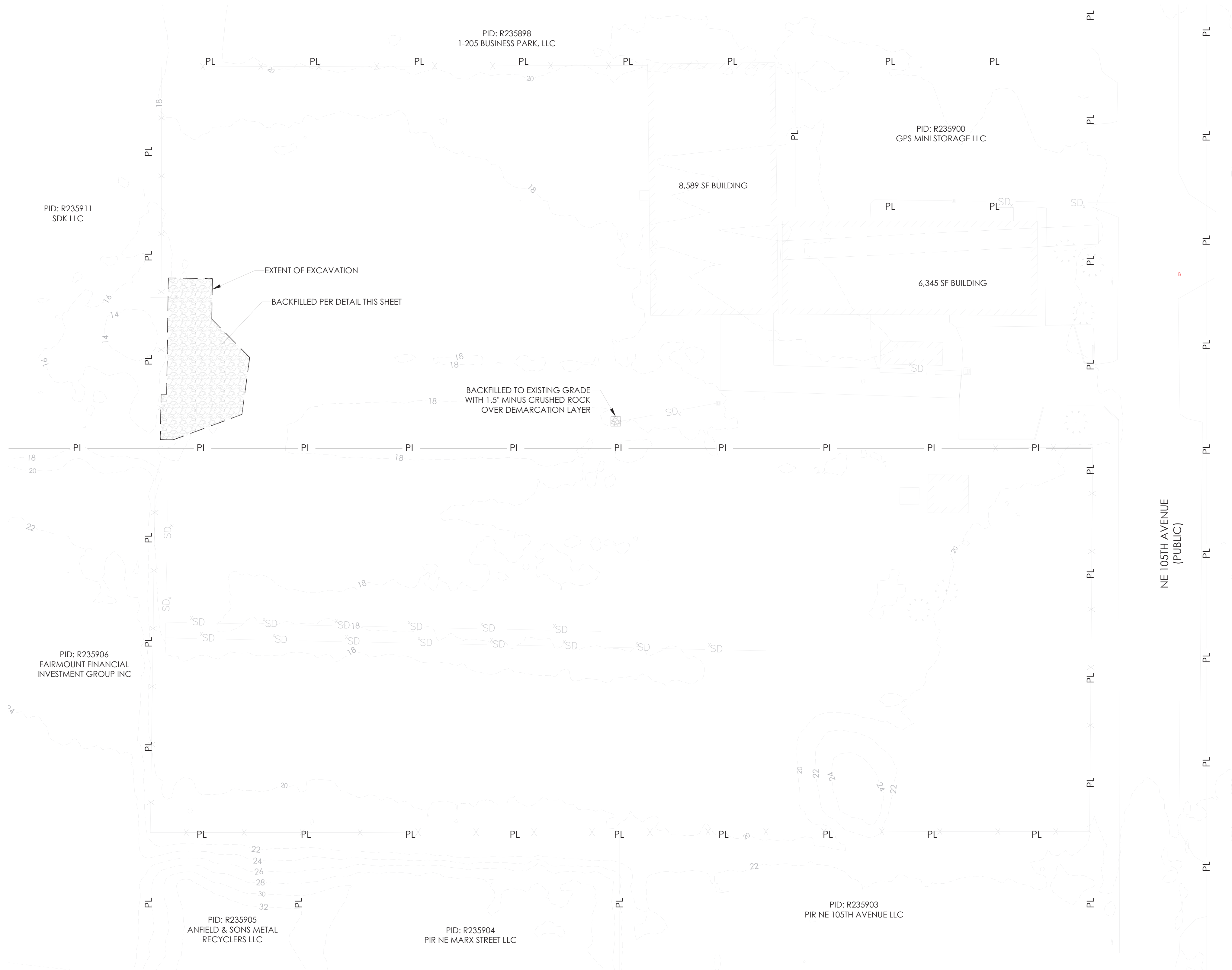
NOTE: BAR IS ONE INCH ON ORIGINAL DRAWING. IF NOT ONE INCH ON THIS SHEET, ADJUST SCALE ACCORDINGLY.

SHEET TITLE
EXCAVATION AND STORMWATER DECOMMISSIONING

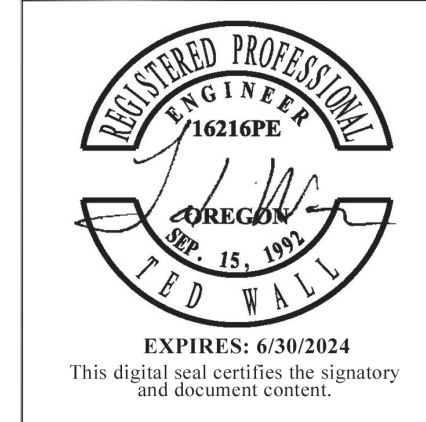
SHEET
C1.0



PROJECT: M0106.30.001
 FILENAME: G:\00_MIA_C\3D\00_PROJECT\01\06_30\James C. Brown & Associates\PLANS\AS-BUILT\C2.DWG RESTORATION.dwg
 PLOTTED BY: tbrly.tackett
 PLOTTED ON: 2023.12.22 11:20 AM



MAUL FOSTER ALONGI
 3140 NE BROADWAY STREET
 PORTLAND, OR 97232
 PHONE: 971.544.2139
 www.maulfooster.com

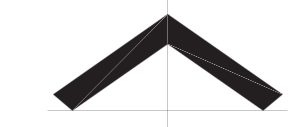


205 AUTO SALVAGE REMEDIAL ACTION
 205 REAL ESTATE, INC.
 TROUTDALE, OREGON

ISSUE	DATE	DESCRIPTION
C	12/22/2023	AS-BUILT REVISED PER MIF PLANS SET
B	10/10/2023	REVISED PER MIF PLANS SET
A	10/05/2023	PERMITS DOCUMENTS

PROJECT: M0106.30.001
 DESIGNED: B. TACKETT
 DRAWN: B. TACKETT
 CHECKED: T. WALL
 SCALE: 1"=5'
 NOTE: BAR IS ONE INCH ON ORIGINAL DRAWING. IF NOT ONE INCH ON THIS SHEET, ADJUST SCALE ACCORDINGLY.

SHEET TITLE
 SITE RESTORATION
SHEET
 C2.0



Table



MAUL
FOSTER
ALONGI

**Table 4-1
Leave Surface Sample Analytical Results
205 Auto Salvage
Portland, Oregon**



Location:	RBC, Soil, Soil Ingestion, Dermal Contact, and Inhalation ⁽¹⁾			Oregon Background Metals, Portland Basin ⁽²⁾	Site-Specific Cleanup Level ⁽³⁾	GC01	GC02	GC03	GC04	GC05	GC06	GC07	Infiltration Feature
Sample Name:						GC01 COMPOSITE	GC02 COMPOSITE	GC03 COMPOSITE	GC04 COMPOSITE	GC05 COMPOSITE	GC06 COMPOSITE	GC07 COMPOSITE	IF01 COMPOSITE
Sample Date:	Occupational	Construction Worker	Excavation Worker			12/13/2023	12/13/2023	12/13/2023	12/13/2023	12/13/2023	12/13/2023	12/12/2023	12/13/2023
Sample Depth (ft bgs):						2	2	2	2	2	2	2	2
Total Metals (mg/kg)													
Arsenic	1.9	15	420	8.8	NV	32.9	124	213	43.2	6.25	41.0	21.7	4.23
PCBs (mg/kg)													
Aroclor 1016	NV	NV	NV	NV	NV	0.00551 U	0.00573 U	0.0280 U	0.00567 U	0.0976 U	0.00625 U	0.00513 U	--
Aroclor 1221	NV	NV	NV	NV	NV	0.00551 U	0.00573 U	0.0280 U	0.00567 U	0.0976 U	0.00625 U	0.00513 U	--
Aroclor 1232	NV	NV	NV	NV	NV	0.0110 U	0.00573 U	0.0280 U	0.00567 U	0.0976 U	0.00625 U	0.00513 U	--
Aroclor 1242	NV	NV	NV	NV	NV	0.00551 U	0.00573 U	0.0280 U	0.0186 J	0.0976 U	0.00625 U	0.00513 U	--
Aroclor 1248	NV	NV	NV	NV	NV	0.00551 U	0.00573 U	0.0280 U	0.00567 U	0.0976 U	0.00625 U	0.00513 U	--
Aroclor 1254	NV	NV	NV	NV	NV	0.0477 J	0.670	1.47	0.172 J	4.19	0.0611 J	0.158 J	--
Aroclor 1260	NV	NV	NV	NV	NV	0.00990 J	0.00573 U	0.0280 U	0.0233 J	0.0976 U	0.00773 J	0.0366 J	--
Total PCBs ^(a)	NA ^(b)	NA ^(b)	NA ^(b)	NV	0.56	0.0576 J	0.670	1.47	0.214 J	4.19	0.0688 J	0.195 J	--
Notes													
Shading (color key below) indicates values that exceed screening criteria; non-detects (U) results were not compared with screening criteria. Where multiple criteria are exceeded, results are shaded based on the highest value.													
Metals results below background metals criteria were not considered RBC exceedances.													
RBC, Soil, Soil Ingestion, Dermal Contact, and Inhalation, Occupational													
RBC, Soil, Soil Ingestion, Dermal Contact, and Inhalation, Construction Worker													
Oregon Background Metals Concentrations in Soil, Portland Basin													
Site-Specific Cleanup Level													
-- = not analyzed.													
DEQ = Oregon Department of Environmental Quality.													
ft bgs = feet below ground surface.													
J = result is estimated.													
mg/kg = milligrams per kilogram.													
NA = not applicable.													
NV = no value.													
PCB = polychlorinated biphenyl.													
RBC = risk-based concentration.													
U = result is non-detect at the laboratory detection limit.													
^(a) Total PCBs is the sum of all detected PCB Aroclors. Non-detect results are not included in the sum.													
^(b) A DEQ-approved cleanup level is established for the site; therefore, total PCBs are not screened against the generic DEQ RBCs.													
References													
⁽¹⁾ DEQ. 2023. Table: <i>Risk-Based Concentrations for Individual Chemicals</i> . Oregon Department of Environmental Quality. June.													
⁽²⁾ DEQ. 2013. <i>Oregon Background Concentrations for Metals in Soil</i> . Oregon Department of Environmental Quality. March.													
⁽³⁾ DEQ. 2023. Rebecca Digiustino, Oregon Department of Environmental Quality. <i>Request for Revised Residual PCB Cleanup Level of 0.56 mg/kg, Auto Salvage 205 (ECSI No. 2087)</i> . Letter to Garry Gossett, City of Portland. June 29.													

Appendix A

Standard Operating Procedures



MAUL
FOSTER
ALONGI



STANDARD OPERATING PROCEDURE

Field Screening for VOCs in Soil

SOP Number: 3
Date: 3/9/2021
Revision Number: 0.1

SCOPE AND APPLICATION

This standard operating procedure (SOP) describes the use of a photoionization detector (PID) to field screen soil for evidence of organic vapors. The PID measures the organic vapor concentration in parts per million, is not compound-specific.

Never rely on a stand-alone PID reading to identify organic chemical contamination in soil. Always collect multiple PID readings (e.g., at multiple depths along the length of a soil core), since it is the relative difference in concentration between multiple readings (e.g., a sudden increase in concentration at a certain depth interval) that is the typical indicator of contamination. Additionally, PID readings should always be accompanied by observation of the soil samples for other indicators of contamination, such as soil staining or chemical odors, so that these multiple lines of evidence can be used together to identify potential organic chemical contamination in the field.

EQUIPMENT AND MATERIALS REQUIRED

The following materials are necessary for this procedure:

- Personal protective equipment (as specified in the health and safety plan)
- PID with calibration gas
- Ziploc®-type bags
- Field forms or notebook for documenting PID readings

METHODOLOGY

When the project-specific sampling and analysis plan (SAP) specifies additional or different requirements for organic vapor field screening, it takes precedence over this SOP. In the absence of a SAP, the procedures in this SOP shall be used.

The electron volt (eV) rating for the PID lamp (e.g., 9.8, 10.6, 11.7) must be greater than the ionization potential (in eV) of a compound in order for the PID to detect the compound. A lamp of at least 9.8 eV should be used for petroleum hydrocarbons. A lamp of at least 10.6 eV should be used for typical chlorinated alkenes. If the project health and safety plan does not specify the lamp size, verify the compatibility of the lamp size with the anticipated compounds expected to be present in soil prior to the field activities, and confirm with the project manager.

General Procedure:

Calibration:

- The PID should be calibrated daily (or more frequently, as needed).
- Calibrate the PID according to the manufacturer's instructions.
- Document the calibration activities and results in the field notebook.

Measuring organic vapor content:

- Place a representative volume (generally, a “handful”) of freshly exposed soil into a Ziploc-type bag.
- Seal the bag and gently knead the bag to loosen the soil.
- Let the bag set for several minutes to allow organic vapors, if present, to volatilize from the soil into the headspace of the bag.

- Partially open the bag so that the tip of the PID intake tube can be inserted into the bag but is not in contact with the soil, then close the bag seal around the intake tube.
- Record the PID measurement and document results in the field notes or boring log.

Static Sheen Test Procedure and Observations:

Sheen Test Procedure:

- Following the PID screen discussed above, add enough water to cover the soil in the container.
- Observe the water for signs of discoloration/sheen and characterize per the table below.

When static sheen testing is required or when making observations of a water surface the following table presents descriptions to be used (consistent with Department of Ecology Guidance)¹.

No Sheen (NS)	No visible sheen on the water surface
Slight Sheen (SS)	Light, colorless, dull sheen; spread is irregular, not rapid. Natural organic oils or iron bacteria in the soil may produce a slight sheen.
Moderate Sheen (MS)	Pronounced sheen over limited area; probably has some color/iridescence; spread is irregular, may be rapid; sheen does not spread over entire water surface.
Heavy Sheen (HS)	Heavy sheen with pronounced color/iridescence; spread is rapid; the entire water surface is covered with sheen.
Biogenic Film (BF)	False positive results may be generated by the presence of decaying organic matter and iron bacteria, which can produce a rainbow-like sheen similar to an oil sheen. These sheens, unlike oil sheens, can typically be broken up creating platy or blocky fragments when agitated or disturbed. Biogenic films can also be foamy.

¹ Department of Ecology. 2016. Guidance for remediation of petroleum contaminated sites. June.



STANDARD OPERATING PROCEDURE

Underground Utility Locates

SOP Number: 18
Date: 3/9/2021
Revision Number: 0.1

SCOPE AND APPLICATION

This standard operating procedure (SOP) describes the practices for locating underground utilities. Refer to the MFA health and safety plan (HASp) for additional information regarding communication procedures to be followed when an inadvertent utility strike occurs, as well as regarding methods for mitigating hazards during a utility strike.

EQUIPMENT AND MATERIALS REQUIRED

The following materials are necessary for this procedure:

- Personal protective equipment (as specified in the HASp)
- Marking materials (e.g., marking paint, stakes, flags)
- Field documentation materials

METHODOLOGY

When the project-specific sampling and analysis plan (SAP) specifies additional or different requirements for underground utility locates, it takes precedence over this SOP. In the absence of a SAP, the procedures in this SOP shall be used.

Before Conducting Utility Locates:

- Ensure that the locate will be conducted reasonably soon before the excavation work begins, e.g., within 48 hours. There may be project-specific conditions, e.g., weather and/or ground features that could cause markings to fade, which would require scheduling of the excavation work sooner than 48 hours after the locate.
- Clearly define the boundary of the work and the locations of all proposed excavations. Prepare a map of the project area showing the excavation locations.
- Interview site managers/property owners and obtain plans or drawings, if available, showing on-site utilities.
- For project work that will not take place in the public right-of-way, ensure that the public rights-of-way nearest to the project are identified and communicated during the one-call notification.
- Identify the township and range of the project area. This information can be easily attained by a quick email to MFA's GIS Exchange.
- If feasible, conduct a site visit to identify site conditions that could cause fading or disruption of marking paint. Such conditions could include gravel or ground sensitive to erosion and high traffic.
- Check the weather forecast to assess the potential for snow or rain to make marking utilities difficult or cause the markings to fade.

One-Call Utility Notification:

- If possible, initiate the one-call utility notification at least one week before the proposed work begins.
- Include a map or GPS coordinates when submitting the notification.
- Before conducting any excavation activities, confirm with each public utility that the utility locate has been completed.

- On remote or complicated sites, consider meeting public locators on site.
- Document the one-call ticket number and results in the project files.
- Provide the one-call ticket number to subcontractors who will be doing the excavations.

Private Utility Locate:

- Conduct the private utility locate only after confirmation that the public utility locate has been completed and all public utilities have been marked and the results reviewed by MFA staff who will be overseeing the excavations.
- Meet the private locator on site and participate in the entire private utility locate. Be engaged in the process, ask questions, and take time to walk the site thoroughly with the locator.
- Bring a copy of the one-call utility ticket and results of the one-call utility locator to check against the utility markings on the ground.
- If possible, have a site/property representative knowledgeable of on-site utilities participate in the private utility locate.
- If paint alone may not suffice to ensure clear marking of utilities, add vertical markers such as stakes or flags.
- Visually assess the area of the proposed excavation(s) to identify features potentially indicative of buried utilities. Have the private utility locator examine each feature identified below to assess the presence of buried utilities.
 - Examine adjacent public rights-of-way where public utilities have been marked for evidence of utilities that may extend onto the project site.
 - Identify nearby light poles, telephone poles, electrical utility poles, or other overhead utility poles with wires or conductors that run from the overhead utility, down the pole, and into the ground.
 - Identify the location of gas meters, water meters, or other aboveground junction boxes for evidence of utilities extending from these features into the ground.
 - Examine asphalt and concrete ground surfaces for discontinuities in the surface indicative of utility installations. Discontinuities may include recent patches of asphalt or concrete inlaid within older concrete or asphalt surfaces.
 - Identify manholes and catch basins indicative of buried storm or sanitary sewer pipes. Open manholes to examine the orientation of associated pipes to assess whether the utilities may be present near proposed excavations.
 - Identify tank ports and vent pipes.
 - Identify irrigation systems and associated features such as valve boxes and controllers.
 - Identify any other signs indicating the presence of buried utilities.
 - Be wary of utility marks that suddenly begin or dead end.

Preparing to Perform Subsurface Activities after a Locate:

- Ensure that the markings are still visible when the work begins.
- Adjust locations, as needed, to avoid identified utilities, or use alternative methods such as nonmechanical excavation means (i.e., manual excavation or air-knifing) to a minimum depth of 5 feet.

Table
APWA UNIFORM COLOR CODE

	WHITE—Proposed Excavation
	PINK—Temporary Survey Markings
	RED—Electric Power Lines, Cables, Conduit and Lighting Cables
	YELLOW—Gas, Oil, Steam, Petroleum or Gaseous Materials
	ORANGE—Communication, Alarm or Signal Lines, Cables or Conduit
	BLUE—Potable Water
	PURPLE—Reclaimed Water, Irrigation and Slurry Lines
	GREEN—Sewers and Drain Lines
Source: Uniform Color Codes, ANSI Standard Z535.1. American Public Works Association. Revised 1999.	

Appendix B

City of Portland Site Development Permit



MAUL
FOSTER
ALONGI



CITY OF
PORTLAND, OREGON
 BUREAU OF DEVELOPMENT SERVICES
 1900 SW 4th Ave, Suite 5000
 Portland, OR 97201



SITE DEVELOPMENT PERMIT

23-080131-000-00-SD

Site Address: 5621 NE 105TH AVE

Issued:

PROJECT INFORMATION		Occ. Group	Const. Type
Existing Commercial Site	Grading		

Project Description: SINGLE PDF: ENVIRONMENTAL CLEAN UP INCLUDES EXCAVATION OF UPTO 160 CY CONTAMINATED SOIL AND FILL WITH NEW SOIL AND GRADING AND STABILIZATION.

APPLICANT	MAUL, FOSTER & ALONGI *BROOKE HARMON*	Phone: (360) 433-0230
PROPERTY OWNER	205 REAL ESTATE INC	Phone:
CONTRACTOR	TO BID	Phone:

Project Details		Project Details	
Ground Disturbance Area (Sq. Ft.)	1	Ground Disturbance?	Yes
Inches of Individual Trees Removed	0	Lot Area (Sq. Ft.)	86005
SI-Soils	Yes	Slope steeper than 20% or 5:1 on lot?	Yes

This permit expires if, at any time, 180 days pass without an approved inspection. If you are not able to obtain an inspection approval within 180 days, you may request a one-time only extension of 180 days by calling 503-823-6892.

BEFORE YOU DIG	ATTENTION: Oregon law requires you to follow rules adopted by the Oregon Utility Notification Center. Those rules are set forth in OAR 952-001-0010 through OAR 952-001-0090. You may obtain copies of the rules by calling the center. (Note: the telephone number for the Oregon Utility Notification Center is 1-800-332-2344).
-----------------------	------------------------------------------------------------------------------------------------------------------------------------------------------------------------------------------------------------------------------------------------------------------------------------------------------------------------------------

CITY CONTACT	Phone:
E-Mail:	Fax: (503) 823-4172

INSPECTION REQUEST PHONE NUMBERS	Building/Trade Inspections - Call Before 6:00 AM: (503) 823-7000
TDD: (503) 823-6868	
IVR Inspection Request Number:	4964966

Appendix C

Photograph Log



MAUL
FOSTER
ALONGI



MAUL
FOSTER
ALONGJ

Photographs

Project Name: 205 Auto Salvage Site Remedial Action
Project Number: M0106.30.001
Location: 5605 NE 105th Avenue, Portland, Oregon

Photo No. 1.

Description

Pumping out the accumulated water from the northern portion of the stormwater retention system excavation prior to removal activities. 12/12/23.



Photo No. 2.

Description

Loading excavated soil directly into trucks for disposal to Hillsboro Landfill. 12/12/23.



Photographs

Project Name: 205 Auto Salvage Site Remedial Action
Project Number: M0106.30.001
Location: 5605 NE 105th Avenue, Portland, Oregon

Photo No. 3.

Description

View of removal activities in the central portion of the stormwater retention system excavation. Soil was excavated to two feet below existing grade. The soil buffer remaining onsite is visible to the left. 12/12/23.



Photo No. 4.

Description

View of the covered temporary stockpiled material located within the excavation area. The material located was temporarily stockpiled pending loading directly into trucks for disposal. 12/13/23.





MAUL
FOSTER
ALONGI

Photographs

Project Name: 205 Auto Salvage Site Remedial Action
Project Number: M0106.30.001
Location: 5605 NE 105th Avenue, Portland, Oregon

Photo No. 5.

Description

Excavating soil at the northern portion of the stormwater retention system excavation near the catch basin. The soil buffer remaining onsite is visible to the right. 12/13/23.



Photo No. 6.

Description

View of the damaged stormwater pipe that was intended to convey stormwater from the catch basin to the adjacent property. The damage caused water from the adjacent property to enter the excavation zone. 12/13/23.





MAUL
FOSTER
ALONGI

Photographs

Project Name: 205 Auto Salvage Site Remedial Action
Project Number: M0106.30.001
Location: 5605 NE 105th Avenue, Portland, Oregon

Photo No. 7.

Description

Plugging of the damaged pipe near the catch basin in the excavation. 12/13/23.



Photo No. 8.

Description

View of interior of the catch basin. Only one outlet pipe is present. 12/13/23.



Photographs

Project Name: 205 Auto Salvage Site Remedial Action
Project Number: M0106.30.001
Location: 5605 NE 105th Avenue, Portland, Oregon

Photo No. 9.

Description

View of the leave surface at the northern end of the stormwater retention system excavation after the catch basin was removed. 12/13/23.



Photo No. 10.

Description

Leave surface at the southern portion of the stormwater retention system excavation. 12/13/23.





MAUL
FOSTER
ALONGI

Photographs

Project Name: 205 Auto Salvage Site Remedial Action
Project Number: M0106.30.001
Location: 5605 NE 105th Avenue, Portland, Oregon

Photo No. 11.

Description

Demarcation layer being installed over the leave surface at the southern portion of the stormwater retention system excavation. 12/13/23.



Photo No. 12.

Description

Clean 1 ½"-minus crushed rock used as backfill material. 12/13/23.





MAUL
FOSTER
ALONGI

Photographs

Project Name: 205 Auto Salvage Site Remedial Action
Project Number: M0106.30.001
Location: 5605 NE 105th Avenue, Portland, Oregon

Photo No. 13.

Description

View of backfilling activities in the stormwater retention system excavation. 12/13/23.



Photo No. 14.

Description

View of the compacted backfill in the stormwater retention system excavation. Approximately 16 inches of gravel was installed. The soil buffer remaining onsite is visible to the right. 12/13/23.





MAUL
FOSTER
ALONGI

Photographs

Project Name: 205 Auto Salvage Site Remedial Action
Project Number: M0106.30.001
Location: 5605 NE 105th Avenue, Portland, Oregon

Photo No. 15.

Description

View of the soil buffer.
12/14/23.



Photo No. 16.

Description

Placement of topsoil
over the stormwater
retention system
excavation. 12/14/23.





Photographs

Project Name: 205 Auto Salvage Site Remedial Action
Project Number: M0106.30.001
Location: 5605 NE 105th Avenue, Portland, Oregon

Photo No. 17.

Description

The backfill surface at the stormwater retention system excavation on 12/14/23.



Photo No. 18.

Description

The finalized backfill surface at the stormwater retention system excavation. 12/22/23.





MAUL
FOSTER
ALONGI

Photographs

Project Name: 205 Auto Salvage Site Remedial Action
Project Number: M0106.30.001
Location: 5605 NE 105th Avenue, Portland, Oregon

Photo No. 19.

Description

View of the suspect infiltration feature excavation located in the central portion of the site. Excavated soils were removed to two feet below existing grade. The daylighting stormwater pipe to be decommissioned is visible. 12/13/23.



Photo No. 20.

Description

Partial backfill at the suspect infiltration feature excavation. 12/13/23.





MAUL
FOSTER
ALONGI

Photographs

Project Name: 205 Auto Salvage Site Remedial Action
Project Number: M0106.30.001
Location: 5605 NE 105th Avenue, Portland, Oregon

Photo No. 21.

Description

Grouting and plugging the stormwater pipe located in the suspect infiltration feature excavation. 12/14/23.



Photo No. 22.

Description

The finalized surface at the suspect infiltration feature excavation after backfilling. 12/14/23.



Appendix D

Disposal Documentation



MAUL
FOSTER
ALONGI



Hillsboro Landfill, Inc
 3205 SE Minter Bridge
 Hillsboro, OR, 97123
 Ph: (503)-640-9427

Original
 Ticket# 1705840

Customer Name TELLURIC ENTERPRISES TELLURIC Carrier CASEDAY INC
 Ticket Date 12/13/2023 Vehicle# 18-SOLO Volume
 Payment Type Credit Account Container
 Manual Ticket# Driver JIM
 Hauling Ticket# Check#
 Route Billing # 0004280
 State Waste Code Gen EPA ID
 Manifest 9186-2 Grid
 Destination
 PO Bid #23280
 Profile 141551OR (SOIL)
 Generator 133-205 AUTO SALVAGE INC 205 AUTO SALVAGE INC 5605 NE 105TH AVE PORTLAND OR

	Time	Scale	Operator	Inbound	Gross	82400 lb
In	12/13/2023 07:07:10	Inbound 1	lgillila		Tare	33120 lb
Out	12/13/2023 07:07:10		lgillila		Net	49280 lb
					Tons	24.64

Comments

Consumer Comments? We want to know. Please call.

Product	LD%	Qty	UOM	Rate	Tax	Amount	Origin
1	ENVCLEANUP SPWPCS-	100	24.64	Tons			MULT-IN
2	ENERGY-Energy Surc	100	%				

Total Tax
 Total Ticket

Driver's Signature



Hillsboro Landfill, Inc
 3205 SE Minter Bridge
 Hillsboro, OR, 97123
 Ph: (503)-640-9427

Original
 Ticket# 1705802

Customer Name TELLURIC ENTERPRISES TELLURIC Carrier CASEDAY INC
 Ticket Date 12/12/2023 Vehicle# 18-SOLO Volume
 Payment Type Credit Account Container
 Manual Ticket# Driver CASEY
 Hauling Ticket# Check#
 Route Billing # 0004280
 State Waste Code Gen EPA ID
 Manifest 9186-4 Grid
 Destination
 PO Bid #23280
 Profile 141551OR (SOIL)
 Generator 133-205 AUTO SALVAGE INC 205 AUTO SALVAGE INC 5605 NE 105TH AVE PORTLAND OR

	Time	Scale	Operator	Inbound	Gross	85180 lb
In	12/12/2023 13:48:26	Inbound 2	DKACHMAR		Tare	33120 lb
Out	12/12/2023 13:48:26		DKACHMAR		Net	52060 lb
					Tons	26.03

Comments

Consumer Comments? We want to know. Please call.

Product	LD%	Qty	UOM	Rate	Tax	Amount	Origin
1 ENVCLEANUP SPWPCS-	100	26.03	Tons				MULT-IN
2 ENERGY-Energy Surc	100		%				

Total Tax
 Total Ticket

Driver's Signature



Hillsboro Landfill, Inc
 3205 SE Minter Bridge
 Hillsboro, OR, 97123
 Ph: (503)-640-9427

Original
 Ticket# 1705838

Customer Name TELLURIC ENTERPRISES TELLURIC Carrier CASEDAY INC
 Ticket Date 12/13/2023 Vehicle# 22-SOLO Volume
 Payment Type Credit Account Container
 Manual Ticket# Driver SCOTT
 Hauling Ticket# Check#
 Route Billing # 0004280
 State Waste Code Gen EPA ID
 Manifest 9186-6 Grid
 Destination
 PO Bid #23280
 Profile 141551OR (SOIL)
 Generator 133-205 AUTO SALVAGE INC 205 AUTO SALVAGE INC 5605 NE 105TH AVE PORTLAND OR

	Time	Scale	Operator	Inbound	Gross	71380 lb
In	12/13/2023 06:57:53	Inbound 1	lgillila		Tare	30020 lb
Out	12/13/2023 06:57:53		lgillila		Net	41360 lb
					Tons	20.68

Comments

Consumer Comments? We want to know. Please call.

Product	LD%	Qty	UOM	Rate	Tax	Amount	Origin
1 ENVCLEANUP SPWPCS-	100	20.68	Tons				MULT-IN
2 ENERGY-Energy Surc	100		%				MULT-IN

Total Tax
 Total Ticket

Driver's Signature



Hillsboro Landfill, Inc
 3205 SE Minter Bridge
 Hillsboro, OR, 97123
 Ph: (503)-640-9427

Original
 Ticket# 1705762

Customer Name TELLURIC ENTERPRISES TELLURIC Carrier CASEDAY INC
 Ticket Date 12/12/2023 Vehicle# 18-SOLO Volume
 Payment Type Credit Account Container
 Manual Ticket# Driver CASEY
 Hauling Ticket# Check#
 Route Billing # 0004280
 State Waste Code Gen EPA ID
 Manifest na
 Destination Grid
 PO Bid #23280
 Profile 141551OR (SOIL)
 Generator 133-205 AUTO SALVAGE INC 205 AUTO SALVAGE INC 5605 NE 105TH AVE PORTLAND OR

	Time	Scale	Operator	Inbound	Gross	83580 lb
In	12/12/2023 11:03:21	Inbound 2	mmalone2		Tare	33120 lb
Out	12/12/2023 11:03:21		mmalone2		Net	50460 lb
					Tons	25.23

Comments

Consumer Comments? We want to know. Please call.

Product	LD%	Qty	UOM	Rate	Tax	Amount	Origin
1 ENVCLEANUP SPWPCS-	100	25.23	Tons				MULT-IN
2 ENERGY-Energy Surc	100		%				MULT-IN

Total Tax
 Total Ticket

Driver's Signature



Hillsboro Landfill, Inc
 3205 SE Minter Bridge
 Hillsboro, OR, 97123
 Ph: (503)-640-9427

Original
 Ticket# 1705872

Customer Name TELLURIC ENTERPRISES TELLURIC Carrier CASEDAY INC
 Ticket Date 12/13/2023 Vehicle# 16-SOLO Volume
 Payment Type Credit Account Container
 Manual Ticket# Driver MARC
 Hauling Ticket# Check#
 Route Billing # 0004280
 State Waste Code Gen EPA ID
 Manifest 9186-8
 Destination Grid
 PO Bid #23280
 Profile 141551OR (SOIL)
 Generator 133-205 AUTO SALVAGE INC 205 AUTO SALVAGE INC 5605 NE 105TH AVE PORTLAND OR

	Time	Scale	Operator	Inbound	Gross	76060 lb
In	12/13/2023 09:52:02	Inbound 2	lgillila		Tare	28600 lb
Out	12/13/2023 09:52:02		lgillila		Net	47460 lb
					Tons	23.73

Comments

Consumer Comments? We want to know. Please call.

Product	LD%	Qty	UOM	Rate	Tax	Amount	Origin
1 ENVCLEANUP SPWPCS-	100	23.73	Tons				MULT-IN
2 ENERGY-Energy Surc	100		%				

Total Tax
 Total Ticket

Driver's Signature



Hillsboro Landfill, Inc
 3205 SE Minter Bridge
 Hillsboro, OR, 97123
 Ph: (503)-640-9427

Original
 Ticket# 1705878

Customer Name TELLURIC ENTERPRISES TELLURIC Carrier CASEDAY INC
 Ticket Date 12/13/2023 Vehicle# 22-SOLO Volume
 Payment Type Credit Account Container
 Manual Ticket# Driver SCOTT
 Hauling Ticket# Check#
 Route Billing # 0004280
 State Waste Code Gen EPA ID
 Manifest NA
 Destination Grid
 PO Bid #23280
 Profile 141551OR (SOIL)
 Generator 133-205 AUTO SALVAGE INC 205 AUTO SALVAGE INC 5605 NE 105TH AVE PORTLAND OR

	Time	Scale	Operator	Inbound	Gross	68440 lb
In	12/13/2023 10:10:43	Inbound 1	mmalone2		Tare	30020 lb
Out	12/13/2023 10:10:43		mmalone2		Net	38420 lb
					Tons	19.21

Comments

Consumer Comments? We want to know. Please call.

Product	LD%	Qty	UOM	Rate	Tax	Amount	Origin
1 ENVCLEANUP SPWPCS-	100	19.21	Tons				MULT-IN
2 ENERGY-Energy Surc	100		%				MULT-IN

Total Tax
 Total Ticket

Driver's Signature



Hillsboro Landfill, Inc
 3205 SE Minter Bridge
 Hillsboro, OR, 97123
 Ph: (503)-640-9427

Original
 Ticket# 1705884

Customer Name TELLURIC ENTERPRISES TELLURIC Carrier CASEDAY INC
 Ticket Date 12/13/2023 Vehicle# 18-SOLO Volume
 Payment Type Credit Account Container
 Manual Ticket# Driver jim
 Hauling Ticket# Check#
 Route Billing # 0004280
 State Waste Code Gen EPA ID
 Manifest 9186-10
 Destination Grid
 PO Bid #23280
 Profile 141551OR (SOIL)
 Generator 133-205 AUTO SALVAGE INC 205 AUTO SALVAGE INC 5605 NE 105TH AVE PORTLAND OR

	Time	Scale	Operator	Inbound	Gross	77140 lb
In	12/13/2023 10:49:08	Inbound 2	tlong5		Tare	33120 lb
Out	12/13/2023 10:49:08		tlong5		Net	44020 lb
					Tons	22.01

Comments

Consumer Comments? We want to know. Please call.

Product	LD%	Qty	UOM	Rate	Tax	Amount	Origin
1 ENVCLEANUP SPWPCS-	100	22.01	Tons				MULT-IN
2 ENERGY-Energy Surc	100		%				MULT-IN

Total Tax
 Total Ticket

Driver's Signature



Hillsboro Landfill, Inc
 3205 SE Minter Bridge
 Hillsboro, OR, 97123
 Ph: (503)-640-9427

Original
 Ticket# 1705906

Customer Name	TELLURIC ENTERPRISES TELLURIC	Carrier	CASEDAY INC	
Ticket Date	12/13/2023	Vehicle#	16-SOLO	Volume
Payment Type	Credit Account	Container		
Manual Ticket#		Driver	MARC	
Hauling Ticket#		Check#		
Route		Billing #	0004280	
State Waste Code		Gen EPA ID		
Manifest	9186-11			
Destination		Grid		
PO	Bid #23280			
Profile	141551OR (SOIL)			
Generator	133-205 AUTO SALVAGE INC 205 AUTO SALVAGE INC 5605 NE 105TH AVE PORTLAND OR			

	Time	Scale	Operator	Inbound	Gross	62120 lb
In	12/13/2023 13:02:46	Inbound 2	dkachmar		Tare	28600 lb
Out	12/13/2023 13:02:46		dkachmar		Net	33520 lb
					Tons	16.76

Comments

Consumer Comments? We want to know. Please call.

Product	LD%	Qty	UOM	Rate	Tax	Amount	Origin
1 ENVCLEANUP SPWPCS-	100	16.76	Tons				MULT-IN
2 ENERGY-Energy Surc	100		%				MULT-IN

Total Tax
 Total Ticket

Driver's Signature

Appendix E

Analytical Laboratory Report



MAUL
FOSTER
ALONGI



ANALYTICAL REPORT

Apex Laboratories, LLC

6700 S.W. Sandburg Street
Tigard, OR 97223
503-718-2323
ORELAP ID: OR100062

Friday, December 15, 2023

Dana Domenighini
Maul Foster & Alongi, INC.
3140 NE Broadway Street
Portland, OR 97232

RE: A3L1221 - 205 Auto Salvage - 0106.30.001

Thank you for using Apex Laboratories. We greatly appreciate your business and strive to provide the highest quality services to the environmental industry.

Enclosed are the results of analyses for work order A3L1221, which was received by the laboratory on 12/13/2023 at 4:50:00PM.

If you have any questions concerning this report or the services we offer, please feel free to contact me by email at: pnerenberg@apex-labs.com, or by phone at 503-718-2323.

Please note: All samples will be disposed of within 30 days of sample receipt, unless prior arrangements have been made.

Cooler Receipt Information	
<p><u>Acceptable Receipt Temperature is less than, or equal to, 6 degC (not frozen), or received on ice the same day as sampling.</u></p> <p>(See Cooler Receipt Form for details)</p>	
<p>Default Cooler</p> <hr style="width: 20%; margin-left: 0;"/>	<p>0.4 degC</p>

This Final Report is the official version of the data results for this sample submission, unless superseded by a subsequent, labeled amended report.

All other deliverables derived from this data, including Electronic Data Deliverables (EDDs), CLP-like forms, client requested summary sheets, and all other products are considered secondary to this report.



Apex Laboratories

Philip Nerenberg, Lab Director

The results in this report apply to the samples analyzed in accordance with the chain of custody document(s) and updated by any subsequent written communications. This analytical report must be reproduced in its entirety.



ANALYTICAL REPORT

Apex Laboratories, LLC

6700 S.W. Sandburg Street
Tigard, OR 97223
503-718-2323
ORELAP ID: OR100062

<u>Maul Foster & Alongi, INC.</u> 3140 NE Broadway Street Portland, OR 97232	Project: <u>205 Auto Salvage</u> Project Number: 0106.30.001 Project Manager: Dana Domenighini	Report ID: A3L1221 - 12 15 23 1559
-----------------------------------------------------------------------------------------------	---------------------------------------------------------------------------------------------------------------------------	-----------------------------------------------------

ANALYTICAL REPORT FOR SAMPLES

SAMPLE INFORMATION

Client Sample ID	Laboratory ID	Matrix	Date Sampled	Date Received
GC01 Composite	A3L1221-01	Soil	12/13/23 13:15	12/13/23 16:50
GC02 Composite	A3L1221-02	Soil	12/13/23 13:00	12/13/23 16:50
GC03 Composite	A3L1221-03	Soil	12/13/23 14:31	12/13/23 16:50
GC04 Composite	A3L1221-04	Soil	12/13/23 12:15	12/13/23 16:50
GC05 Composite	A3L1221-05	Soil	12/13/23 11:00	12/13/23 16:50
GC06 Composite	A3L1221-06	Soil	12/13/23 10:00	12/13/23 16:50
GC07 Composite	A3L1221-07	Soil	12/12/23 14:30	12/13/23 16:50
IF01 Composite	A3L1221-08	Soil	12/13/23 14:55	12/13/23 16:50

Apex Laboratories

The results in this report apply to the samples analyzed in accordance with the chain of custody document(s) and updated by any subsequent written communications. This analytical report must be reproduced in its entirety.

Philip Nerenberg, Lab Director



ANALYTICAL REPORT

Apex Laboratories, LLC

6700 S.W. Sandburg Street
Tigard, OR 97223
503-718-2323
ORELAP ID: OR100062

Maul Foster & Alongi, INC. 3140 NE Broadway Street Portland, OR 97232	Project: 205 Auto Salvage Project Number: 0106.30.001 Project Manager: Dana Domenighini	Report ID: A3L1221 - 12 15 23 1559
----------------------------------------------------------------------------------------	--------------------------------------------------------------------------------------------------------------------	-----------------------------------------------------

ANALYTICAL SAMPLE RESULTS

Polychlorinated Biphenyls by EPA 8082A

Analyte	Sample Result	Detection Limit	Reporting Limit	Units	Dilution	Date Analyzed	Method Ref.	Notes
GC01 Composite (A3L1221-01)				Matrix: Soil		Batch: 23L0495		C-07
Aroclor 1016	ND	5.51	11.0	ug/kg dry	1	12/14/23 16:18	EPA 8082A	
Aroclor 1221	ND	5.51	11.0	ug/kg dry	1	12/14/23 16:18	EPA 8082A	
Aroclor 1232	ND	11.0	11.0	ug/kg dry	1	12/14/23 16:18	EPA 8082A	
Aroclor 1242	ND	5.51	11.0	ug/kg dry	1	12/14/23 16:18	EPA 8082A	
Aroclor 1248	ND	5.51	11.0	ug/kg dry	1	12/14/23 16:18	EPA 8082A	
Aroclor 1254	47.7	5.51	11.0	ug/kg dry	1	12/14/23 16:18	EPA 8082A	P-12
Aroclor 1260	9.90	5.51	11.0	ug/kg dry	1	12/14/23 16:18	EPA 8082A	J
<i>Surrogate: Decachlorobiphenyl (Surr)</i>		<i>Recovery: 90 %</i>		<i>Limits: 60-125 %</i>		<i>1</i>	<i>12/14/23 16:18</i>	<i>EPA 8082A</i>
GC02 Composite (A3L1221-02)				Matrix: Soil		Batch: 23L0495		C-07
Aroclor 1016	ND	5.73	11.5	ug/kg dry	1	12/14/23 13:56	EPA 8082A	
Aroclor 1221	ND	5.73	11.5	ug/kg dry	1	12/14/23 13:56	EPA 8082A	
Aroclor 1232	ND	5.73	11.5	ug/kg dry	1	12/14/23 13:56	EPA 8082A	
Aroclor 1242	ND	5.73	11.5	ug/kg dry	1	12/14/23 13:56	EPA 8082A	
Aroclor 1248	ND	5.73	11.5	ug/kg dry	1	12/14/23 13:56	EPA 8082A	
Aroclor 1254	670	5.73	11.5	ug/kg dry	1	12/14/23 13:56	EPA 8082A	
Aroclor 1260	ND	5.73	11.5	ug/kg dry	1	12/14/23 13:56	EPA 8082A	
<i>Surrogate: Decachlorobiphenyl (Surr)</i>		<i>Recovery: 96 %</i>		<i>Limits: 60-125 %</i>		<i>1</i>	<i>12/14/23 13:56</i>	<i>EPA 8082A</i>
GC03 Composite (A3L1221-03RE1)				Matrix: Soil		Batch: 23L0495		C-07
Aroclor 1016	ND	28.0	55.9	ug/kg dry	5	12/14/23 17:29	EPA 8082A	
Aroclor 1221	ND	28.0	55.9	ug/kg dry	5	12/14/23 17:29	EPA 8082A	
Aroclor 1232	ND	28.0	55.9	ug/kg dry	5	12/14/23 17:29	EPA 8082A	
Aroclor 1242	ND	28.0	55.9	ug/kg dry	5	12/14/23 17:29	EPA 8082A	
Aroclor 1248	ND	28.0	55.9	ug/kg dry	5	12/14/23 17:29	EPA 8082A	
Aroclor 1254	1470	28.0	55.9	ug/kg dry	5	12/14/23 17:29	EPA 8082A	
Aroclor 1260	ND	28.0	55.9	ug/kg dry	5	12/14/23 17:29	EPA 8082A	
<i>Surrogate: Decachlorobiphenyl (Surr)</i>		<i>Recovery: 98 %</i>		<i>Limits: 60-125 %</i>		<i>5</i>	<i>12/14/23 17:29</i>	<i>EPA 8082A</i>
GC04 Composite (A3L1221-04)				Matrix: Soil		Batch: 23L0495		C-07
Aroclor 1016	ND	5.67	11.3	ug/kg dry	1	12/14/23 15:07	EPA 8082A	
Aroclor 1221	ND	5.67	11.3	ug/kg dry	1	12/14/23 15:07	EPA 8082A	
Aroclor 1232	ND	5.67	11.3	ug/kg dry	1	12/14/23 15:07	EPA 8082A	

Apex Laboratories

Philip Nerenberg, Lab Director

The results in this report apply to the samples analyzed in accordance with the chain of custody document(s) and updated by any subsequent written communications. This analytical report must be reproduced in its entirety.



ANALYTICAL REPORT

Apex Laboratories, LLC

6700 S.W. Sandburg Street
Tigard, OR 97223
503-718-2323
ORELAP ID: OR100062

Maul Foster & Alongi, INC. 3140 NE Broadway Street Portland, OR 97232	Project: 205 Auto Salvage Project Number: 0106.30.001 Project Manager: Dana Domenighini	Report ID: A3L1221 - 12 15 23 1559
----------------------------------------------------------------------------------------	--------------------------------------------------------------------------------------------------------------------	-----------------------------------------------------

ANALYTICAL SAMPLE RESULTS

Polychlorinated Biphenyls by EPA 8082A

Analyte	Sample Result	Detection Limit	Reporting Limit	Units	Dilution	Date Analyzed	Method Ref.	Notes
GC04 Composite (A3L1221-04)				Matrix: Soil		Batch: 23L0495		C-07
Aroclor 1242	18.6	5.67	11.3	ug/kg dry	1	12/14/23 15:07	EPA 8082A	P-12
Aroclor 1248	ND	5.67	11.3	ug/kg dry	1	12/14/23 15:07	EPA 8082A	
Aroclor 1254	172	5.67	11.3	ug/kg dry	1	12/14/23 15:07	EPA 8082A	P-12
Aroclor 1260	23.3	5.67	11.3	ug/kg dry	1	12/14/23 15:07	EPA 8082A	P-12
<i>Surrogate: Decachlorobiphenyl (Surr)</i>		<i>Recovery: 99 %</i>		<i>Limits: 60-125 %</i>		<i>1</i>	<i>12/14/23 15:07</i>	<i>EPA 8082A</i>
GC05 Composite (A3L1221-05RE1)				Matrix: Soil		Batch: 23L0495		C-07
Aroclor 1016	ND	97.6	195	ug/kg dry	20	12/14/23 16:53	EPA 8082A	
Aroclor 1221	ND	97.6	195	ug/kg dry	20	12/14/23 16:53	EPA 8082A	
Aroclor 1232	ND	97.6	195	ug/kg dry	20	12/14/23 16:53	EPA 8082A	
Aroclor 1242	ND	97.6	195	ug/kg dry	20	12/14/23 16:53	EPA 8082A	
Aroclor 1248	ND	97.6	195	ug/kg dry	20	12/14/23 16:53	EPA 8082A	
Aroclor 1254	4190	97.6	195	ug/kg dry	20	12/14/23 16:53	EPA 8082A	
Aroclor 1260	ND	97.6	195	ug/kg dry	20	12/14/23 16:53	EPA 8082A	
<i>Surrogate: Decachlorobiphenyl (Surr)</i>		<i>Recovery: 103 %</i>		<i>Limits: 60-125 %</i>		<i>20</i>	<i>12/14/23 16:53</i>	<i>EPA 8082A</i>
GC06 Composite (A3L1221-06)				Matrix: Soil		Batch: 23L0495		C-07
Aroclor 1016	ND	6.25	12.5	ug/kg dry	1	12/14/23 16:18	EPA 8082A	
Aroclor 1221	ND	6.25	12.5	ug/kg dry	1	12/14/23 16:18	EPA 8082A	
Aroclor 1232	ND	6.25	12.5	ug/kg dry	1	12/14/23 16:18	EPA 8082A	
Aroclor 1242	ND	6.25	12.5	ug/kg dry	1	12/14/23 16:18	EPA 8082A	
Aroclor 1248	ND	6.25	12.5	ug/kg dry	1	12/14/23 16:18	EPA 8082A	
Aroclor 1254	61.1	6.25	12.5	ug/kg dry	1	12/14/23 16:18	EPA 8082A	P-12
Aroclor 1260	7.73	6.25	12.5	ug/kg dry	1	12/14/23 16:18	EPA 8082A	J
<i>Surrogate: Decachlorobiphenyl (Surr)</i>		<i>Recovery: 88 %</i>		<i>Limits: 60-125 %</i>		<i>1</i>	<i>12/14/23 16:18</i>	<i>EPA 8082A</i>
GC07 Composite (A3L1221-07)				Matrix: Soil		Batch: 23L0495		C-07
Aroclor 1016	ND	5.13	10.3	ug/kg dry	1	12/14/23 16:53	EPA 8082A	
Aroclor 1221	ND	5.13	10.3	ug/kg dry	1	12/14/23 16:53	EPA 8082A	
Aroclor 1232	ND	5.13	10.3	ug/kg dry	1	12/14/23 16:53	EPA 8082A	
Aroclor 1242	ND	5.13	10.3	ug/kg dry	1	12/14/23 16:53	EPA 8082A	
Aroclor 1248	ND	5.13	10.3	ug/kg dry	1	12/14/23 16:53	EPA 8082A	
Aroclor 1254	158	5.13	10.3	ug/kg dry	1	12/14/23 16:53	EPA 8082A	P-12

Apex Laboratories

The results in this report apply to the samples analyzed in accordance with the chain of custody document(s) and updated by any subsequent written communications. This analytical report must be reproduced in its entirety.

Philip Nerenberg, Lab Director



ANALYTICAL REPORT

Apex Laboratories, LLC

6700 S.W. Sandburg Street
 Tigard, OR 97223
 503-718-2323
 ORELAP ID: OR100062

Maul Foster & Alongi, INC. 3140 NE Broadway Street Portland, OR 97232	Project: 205 Auto Salvage Project Number: 0106.30.001 Project Manager: Dana Domenighini	Report ID: A3L1221 - 12 15 23 1559
----------------------------------------------------------------------------------------	--------------------------------------------------------------------------------------------------------------------	-----------------------------------------------------

ANALYTICAL SAMPLE RESULTS

Polychlorinated Biphenyls by EPA 8082A

Analyte	Sample Result	Detection Limit	Reporting Limit	Units	Dilution	Date Analyzed	Method Ref.	Notes	
GC07 Composite (A3L1221-07)		Matrix: Soil			Batch: 23L0495		C-07		
Aroclor 1260	36.6	5.13	10.3	ug/kg dry	1	12/14/23 16:53	EPA 8082A	P-12	
<i>Surrogate: Decachlorobiphenyl (Surr)</i>		<i>Recovery: 94 %</i>			<i>Limits: 60-125 %</i>		<i>1</i>	<i>12/14/23 16:53</i>	<i>EPA 8082A</i>

Apex Laboratories

The results in this report apply to the samples analyzed in accordance with the chain of custody document(s) and updated by any subsequent written communications. This analytical report must be reproduced in its entirety.

Philip Nerenberg, Lab Director



ANALYTICAL REPORT

Apex Laboratories, LLC

6700 S.W. Sandburg Street
Tigard, OR 97223
503-718-2323
ORELAP ID: OR100062

Maul Foster & Alongi, INC. 3140 NE Broadway Street Portland, OR 97232	Project: 205 Auto Salvage Project Number: 0106.30.001 Project Manager: Dana Domenighini	Report ID: A3L1221 - 12 15 23 1559
----------------------------------------------------------------------------------------	--------------------------------------------------------------------------------------------------------------------	-----------------------------------------------------

ANALYTICAL SAMPLE RESULTS

Total Metals by EPA 6020B (ICPMS)

Analyte	Sample Result	Detection Limit	Reporting Limit	Units	Dilution	Date Analyzed	Method Ref.	Notes
GC01 Composite (A3L1221-01)				Matrix: Soil				
Batch: 23L0490								
Arsenic	32.9	0.702	1.40	mg/kg dry	10	12/14/23 15:11	EPA 6020B	
GC02 Composite (A3L1221-02)				Matrix: Soil				
Batch: 23L0490								
Arsenic	124	0.705	1.41	mg/kg dry	10	12/14/23 15:17	EPA 6020B	
GC03 Composite (A3L1221-03)				Matrix: Soil				
Batch: 23L0490								
Arsenic	213	0.607	1.21	mg/kg dry	10	12/14/23 15:22	EPA 6020B	
GC04 Composite (A3L1221-04)				Matrix: Soil				
Batch: 23L0490								
Arsenic	43.2	0.695	1.39	mg/kg dry	10	12/14/23 15:37	EPA 6020B	
GC05 Composite (A3L1221-05)				Matrix: Soil				
Batch: 23L0490								
Arsenic	6.25	0.576	1.15	mg/kg dry	10	12/14/23 15:42	EPA 6020B	
GC06 Composite (A3L1221-06)				Matrix: Soil				
Batch: 23L0490								
Arsenic	41.0	0.680	1.36	mg/kg dry	10	12/14/23 15:48	EPA 6020B	
GC07 Composite (A3L1221-07)				Matrix: Soil				
Batch: 23L0490								
Arsenic	21.7	0.595	1.19	mg/kg dry	10	12/14/23 15:53	EPA 6020B	
IF01 Composite (A3L1221-08)				Matrix: Soil				
Batch: 23L0490								
Arsenic	4.23	0.677	1.35	mg/kg dry	10	12/14/23 15:58	EPA 6020B	

Apex Laboratories

Philip Nerenberg, Lab Director

The results in this report apply to the samples analyzed in accordance with the chain of custody document(s) and updated by any subsequent written communications. This analytical report must be reproduced in its entirety.



ANALYTICAL REPORT

Apex Laboratories, LLC

6700 S.W. Sandburg Street
Tigard, OR 97223
503-718-2323
ORELAP ID: OR100062

Maul Foster & Alongi, INC. 3140 NE Broadway Street Portland, OR 97232	Project: 205 Auto Salvage Project Number: 0106.30.001 Project Manager: Dana Domenighini	Report ID: A3L1221 - 12 15 23 1559
----------------------------------------------------------------------------------------	--------------------------------------------------------------------------------------------------------------------	-----------------------------------------------------

ANALYTICAL SAMPLE RESULTS

Percent Dry Weight

Analyte	Sample Result	Detection Limit	Reporting Limit	Units	Dilution	Date Analyzed	Method Ref.	Notes
GC01 Composite (A3L1221-01)				Matrix: Soil		Batch: 23L0527		
% Solids	75.8	1.00	1.00	%	1	12/15/23 08:59	EPA 8000D	
GC02 Composite (A3L1221-02)				Matrix: Soil		Batch: 23L0527		
% Solids	76.8	1.00	1.00	%	1	12/15/23 08:59	EPA 8000D	
GC03 Composite (A3L1221-03)				Matrix: Soil		Batch: 23L0527		
% Solids	80.8	1.00	1.00	%	1	12/15/23 08:59	EPA 8000D	
GC04 Composite (A3L1221-04)				Matrix: Soil		Batch: 23L0527		
% Solids	75.1	1.00	1.00	%	1	12/15/23 08:59	EPA 8000D	
GC05 Composite (A3L1221-05)				Matrix: Soil		Batch: 23L0527		
% Solids	85.6	1.00	1.00	%	1	12/15/23 08:59	EPA 8000D	
GC06 Composite (A3L1221-06)				Matrix: Soil		Batch: 23L0527		
% Solids	71.3	1.00	1.00	%	1	12/15/23 08:59	EPA 8000D	
GC07 Composite (A3L1221-07)				Matrix: Soil		Batch: 23L0527		
% Solids	81.4	1.00	1.00	%	1	12/15/23 08:59	EPA 8000D	
IF01 Composite (A3L1221-08)				Matrix: Soil		Batch: 23L0527		
% Solids	81.1	1.00	1.00	%	1	12/15/23 08:59	EPA 8000D	

Apex Laboratories

Philip Nerenberg, Lab Director

The results in this report apply to the samples analyzed in accordance with the chain of custody document(s) and updated by any subsequent written communications. This analytical report must be reproduced in its entirety.



ANALYTICAL REPORT

Apex Laboratories, LLC

6700 S.W. Sandburg Street
Tigard, OR 97223
503-718-2323
ORELAP ID: OR100062

Maul Foster & Alongi, INC. 3140 NE Broadway Street Portland, OR 97232	Project: 205 Auto Salvage Project Number: 0106.30.001 Project Manager: Dana Domenighini	Report ID: A3L1221 - 12 15 23 1559
----------------------------------------------------------------------------------------	--------------------------------------------------------------------------------------------------------------------	-----------------------------------------------------

QUALITY CONTROL (QC) SAMPLE RESULTS

Polychlorinated Biphenyls by EPA 8082A

Analyte	Result	Detection Limit	Reporting Limit	Units	Dilution	Spike Amount	Source Result	% REC	% REC Limits	RPD	RPD Limit	Notes	
Batch 23L0495 - EPA 3546													
Soil													
Blank (23L0495-BLK1)													
						Prepared: 12/14/23 05:09		Analyzed: 12/14/23 13:56					C-07
<u>EPA 8082A</u>													
Aroclor 1016	ND	2.00	4.00	ug/kg wet	1	---	---	---	---	---	---		
Aroclor 1221	ND	2.00	4.00	ug/kg wet	1	---	---	---	---	---	---		
Aroclor 1232	ND	2.00	4.00	ug/kg wet	1	---	---	---	---	---	---		
Aroclor 1242	ND	2.00	4.00	ug/kg wet	1	---	---	---	---	---	---		
Aroclor 1248	ND	2.00	4.00	ug/kg wet	1	---	---	---	---	---	---		
Aroclor 1254	ND	2.00	4.00	ug/kg wet	1	---	---	---	---	---	---		
Aroclor 1260	ND	2.00	4.00	ug/kg wet	1	---	---	---	---	---	---		
<i>Surr: Decachlorobiphenyl (Surr)</i>		<i>Recovery: 91 %</i>		<i>Limits: 60-125 %</i>		<i>Dilution: 1x</i>							
LCS (23L0495-BS1)													
						Prepared: 12/14/23 05:09		Analyzed: 12/14/23 14:14					C-07
<u>EPA 8082A</u>													
Aroclor 1016	166	2.00	4.00	ug/kg wet	1	250	---	66	47-134%	---	---		
Aroclor 1260	201	2.00	4.00	ug/kg wet	1	250	---	80	53-140%	---	---		
<i>Surr: Decachlorobiphenyl (Surr)</i>		<i>Recovery: 97 %</i>		<i>Limits: 60-125 %</i>		<i>Dilution: 1x</i>							
Duplicate (23L0495-DUP1)													
						Prepared: 12/14/23 05:09		Analyzed: 12/14/23 15:07					C-07
<u>QC Source Sample: Non-SDG (A3L1220-01)</u>													
Aroclor 1016	ND	2.22	4.44	ug/kg dry	1	---	ND	---	---	---	30%		
Aroclor 1221	ND	2.22	4.44	ug/kg dry	1	---	ND	---	---	---	30%		
Aroclor 1232	ND	2.22	4.44	ug/kg dry	1	---	ND	---	---	---	30%		
Aroclor 1242	ND	2.22	4.44	ug/kg dry	1	---	ND	---	---	---	30%		
Aroclor 1248	ND	2.22	4.44	ug/kg dry	1	---	ND	---	---	---	30%		
Aroclor 1254	ND	2.22	4.44	ug/kg dry	1	---	ND	---	---	---	30%		
Aroclor 1260	ND	2.22	4.44	ug/kg dry	1	---	ND	---	---	---	30%		
<i>Surr: Decachlorobiphenyl (Surr)</i>		<i>Recovery: 74 %</i>		<i>Limits: 60-125 %</i>		<i>Dilution: 1x</i>							
Matrix Spike (23L0495-MS1)													
						Prepared: 12/14/23 05:09		Analyzed: 12/14/23 15:42					C-07
<u>QC Source Sample: Non-SDG (A3L1220-01)</u>													
<u>EPA 8082A</u>													
Aroclor 1016	160	2.27	4.54	ug/kg dry	1	283	ND	56	47-134%	---	---		
Aroclor 1260	182	2.27	4.54	ug/kg dry	1	283	ND	64	53-140%	---	---		
<i>Surr: Decachlorobiphenyl (Surr)</i>		<i>Recovery: 76 %</i>		<i>Limits: 60-125 %</i>		<i>Dilution: 1x</i>							

Apex Laboratories

Philip Nerenberg, Lab Director

The results in this report apply to the samples analyzed in accordance with the chain of custody document(s) and updated by any subsequent written communications. This analytical report must be reproduced in its entirety.



ANALYTICAL REPORT

Apex Laboratories, LLC

6700 S.W. Sandburg Street
Tigard, OR 97223
503-718-2323
ORELAP ID: OR100062

<u>Maul Foster & Alongi, INC.</u> 3140 NE Broadway Street Portland, OR 97232	Project: <u>205 Auto Salvage</u> Project Number: 0106.30.001 Project Manager: Dana Domenighini	Report ID: A3L1221 - 12 15 23 1559
-----------------------------------------------------------------------------------------------	---------------------------------------------------------------------------------------------------------------------------	-----------------------------------------------------

QUALITY CONTROL (QC) SAMPLE RESULTS

Polychlorinated Biphenyls by EPA 8082A

Analyte	Result	Detection Limit	Reporting Limit	Units	Dilution	Spike Amount	Source Result	% REC	% REC Limits	RPD	RPD Limit	Notes
Batch 23L0495 - EPA 3546							Soil					

Apex Laboratories

The results in this report apply to the samples analyzed in accordance with the chain of custody document(s) and updated by any subsequent written communications. This analytical report must be reproduced in its entirety.

Philip Nerenberg, Lab Director



ANALYTICAL REPORT

Apex Laboratories, LLC

6700 S.W. Sandburg Street
Tigard, OR 97223
503-718-2323
ORELAP ID: OR100062

Maul Foster & Alongi, INC. 3140 NE Broadway Street Portland, OR 97232	Project: 205 Auto Salvage Project Number: 0106.30.001 Project Manager: Dana Domenighini	Report ID: A3L1221 - 12 15 23 1559
----------------------------------------------------------------------------------------	--------------------------------------------------------------------------------------------------------------------	-----------------------------------------------------

QUALITY CONTROL (QC) SAMPLE RESULTS

Total Metals by EPA 6020B (ICPMS)

Analyte	Result	Detection Limit	Reporting Limit	Units	Dilution	Spike Amount	Source Result	% REC	% REC Limits	RPD	RPD Limit	Notes
Batch 23L0490 - EPA 3051A						Soil						
Blank (23L0490-BLK1)						Prepared: 12/13/23 17:49 Analyzed: 12/14/23 14:40						
<u>EPA 6020B</u>												
Arsenic	ND	0.500	1.00	mg/kg wet	10	---	---	---	---	---	---	
LCS (23L0490-BS1)						Prepared: 12/13/23 17:49 Analyzed: 12/14/23 14:45						
<u>EPA 6020B</u>												
Arsenic	48.8	0.500	1.00	mg/kg wet	10	50.0	---	98	80-120%	---	---	
Duplicate (23L0490-DUP1)						Prepared: 12/13/23 17:49 Analyzed: 12/14/23 14:56						
<u>QC Source Sample: Non-SDG (A3L1092-02)</u>												
Arsenic	5.63	0.762	1.52	mg/kg dry	10	---	4.81	---	---	16	20%	
Matrix Spike (23L0490-MS1)						Prepared: 12/13/23 17:49 Analyzed: 12/14/23 15:01						
<u>QC Source Sample: Non-SDG (A3L1092-02)</u>												
<u>EPA 6020B</u>												
Arsenic	78.9	0.735	1.47	mg/kg dry	10	73.5	4.81	101	75-125%	---	---	

Apex Laboratories

The results in this report apply to the samples analyzed in accordance with the chain of custody document(s) and updated by any subsequent written communications. This analytical report must be reproduced in its entirety.

Philip Nerenberg, Lab Director



ANALYTICAL REPORT

Apex Laboratories, LLC

6700 S.W. Sandburg Street
Tigard, OR 97223
503-718-2323
ORELAP ID: OR100062

Maul Foster & Alongi, INC. 3140 NE Broadway Street Portland, OR 97232	Project: 205 Auto Salvage Project Number: 0106.30.001 Project Manager: Dana Domenighini	Report ID: A3L1221 - 12 15 23 1559
----------------------------------------------------------------------------------------	--------------------------------------------------------------------------------------------------------------------	-----------------------------------------------------

QUALITY CONTROL (QC) SAMPLE RESULTS

Percent Dry Weight

Analyte	Result	Detection Limit	Reporting Limit	Units	Dilution	Spike Amount	Source Result	% REC	% REC Limits	RPD	RPD Limit	Notes
Batch 23L0527 - Total Solids (Dry Weight) - 2022						Soil						
Duplicate (23L0527-DUP1)			Prepared: 12/14/23 10:17 Analyzed: 12/15/23 08:59									
<u>QC Source Sample: Non-SDG (A3L0956-01)</u>												
% Solids	50.7	1.00	1.00	%	1	---	49.5	---	---	2	10%	
Duplicate (23L0527-DUP2)			Prepared: 12/14/23 10:17 Analyzed: 12/15/23 08:59									
<u>QC Source Sample: Non-SDG (A3L0956-02)</u>												
% Solids	52.5	1.00	1.00	%	1	---	50.3	---	---	4	10%	
Duplicate (23L0527-DUP3)			Prepared: 12/14/23 10:17 Analyzed: 12/15/23 08:59									
<u>QC Source Sample: Non-SDG (A3L0956-03)</u>												
% Solids	55.2	1.00	1.00	%	1	---	52.9	---	---	4	10%	
Duplicate (23L0527-DUP4)			Prepared: 12/14/23 10:17 Analyzed: 12/15/23 08:59									
<u>QC Source Sample: Non-SDG (A3L0956-04)</u>												
% Solids	57.7	1.00	1.00	%	1	---	55.7	---	---	4	10%	
Duplicate (23L0527-DUP5)			Prepared: 12/14/23 10:17 Analyzed: 12/15/23 08:59									
<u>QC Source Sample: Non-SDG (A3L0956-05)</u>												
% Solids	60.8	1.00	1.00	%	1	---	60.0	---	---	1	10%	
Duplicate (23L0527-DUP6)			Prepared: 12/14/23 10:17 Analyzed: 12/15/23 08:59									
<u>QC Source Sample: Non-SDG (A3L0956-06)</u>												
% Solids	60.6	1.00	1.00	%	1	---	60.2	---	---	0.7	10%	
Duplicate (23L0527-DUP7)			Prepared: 12/14/23 10:17 Analyzed: 12/15/23 08:59									
<u>QC Source Sample: Non-SDG (A3L0956-07)</u>												
% Solids	61.5	1.00	1.00	%	1	---	59.5	---	---	3	10%	
Duplicate (23L0527-DUP8)			Prepared: 12/14/23 10:17 Analyzed: 12/15/23 08:59									
<u>QC Source Sample: Non-SDG (A3L0956-08)</u>												
% Solids	60.0	1.00	1.00	%	1	---	57.6	---	---	4	10%	

Apex Laboratories

The results in this report apply to the samples analyzed in accordance with the chain of custody document(s) and updated by any subsequent written communications. This analytical report must be reproduced in its entirety.

Philip Nerenberg, Lab Director



ANALYTICAL REPORT

Apex Laboratories, LLC

6700 S.W. Sandburg Street
Tigard, OR 97223
503-718-2323
ORELAP ID: OR100062

Maul Foster & Alongi, INC. 3140 NE Broadway Street Portland, OR 97232	Project: 205 Auto Salvage Project Number: 0106.30.001 Project Manager: Dana Domenighini	Report ID: A3L1221 - 12 15 23 1559
----------------------------------------------------------------------------------------	--------------------------------------------------------------------------------------------------------------------	-----------------------------------------------------

QUALITY CONTROL (QC) SAMPLE RESULTS

Percent Dry Weight

Analyte	Result	Detection Limit	Reporting Limit	Units	Dilution	Spike Amount	Source Result	% REC	% REC Limits	RPD	RPD Limit	Notes
Batch 23L0527 - Total Solids (Dry Weight) - 2022						Soil						
Duplicate (23L0527-DUP9)			Prepared: 12/14/23 10:17 Analyzed: 12/15/23 08:59									
<u>QC Source Sample: Non-SDG (A3L0956-09)</u>												
% Solids	58.3	1.00	1.00	%	1	---	56.1	---	---	4	10%	
Duplicate (23L0527-DUPA)			Prepared: 12/14/23 10:17 Analyzed: 12/15/23 08:59									
<u>QC Source Sample: Non-SDG (A3L0956-10)</u>												
% Solids	60.9	1.00	1.00	%	1	---	60.4	---	---	0.9	10%	
Duplicate (23L0527-DUPB)			Prepared: 12/14/23 10:17 Analyzed: 12/15/23 08:59									
<u>QC Source Sample: Non-SDG (A3L0956-11)</u>												
% Solids	60.5	1.00	1.00	%	1	---	56.0	---	---	8	10%	
Duplicate (23L0527-DUPC)			Prepared: 12/14/23 19:21 Analyzed: 12/15/23 08:59									
<u>QC Source Sample: Non-SDG (A3L1301-02)</u>												
% Solids	83.0	1.00	1.00	%	1	---	84.4	---	---	2	10%	

No Client related Batch QC samples analyzed for this batch. See notes page for more information.

Apex Laboratories

The results in this report apply to the samples analyzed in accordance with the chain of custody document(s) and updated by any subsequent written communications. This analytical report must be reproduced in its entirety.

Philip Nerenberg, Lab Director



ANALYTICAL REPORT

Apex Laboratories, LLC

6700 S.W. Sandburg Street
Tigard, OR 97223
503-718-2323
ORELAP ID: OR100062

Maul Foster & Alongi, INC. 3140 NE Broadway Street Portland, OR 97232	Project: 205 Auto Salvage Project Number: 0106.30.001 Project Manager: Dana Domenighini	Report ID: A3L1221 - 12 15 23 1559
----------------------------------------------------------------------------------------	--------------------------------------------------------------------------------------------------------------------	----------------------------------------------

SAMPLE PREPARATION INFORMATION

Polychlorinated Biphenyls by EPA 8082A

Prep: EPA 3546					Sample	Default	RL Prep
Lab Number	Matrix	Method	Sampled	Prepared	Initial/Final	Initial/Final	Factor
<u>Batch: 23L0495</u>							
A3L1221-01	Soil	EPA 8082A	12/13/23 13:15	12/14/23 05:09	11.98g/5mL	10g/5mL	0.84
A3L1221-02	Soil	EPA 8082A	12/13/23 13:00	12/14/23 05:09	11.37g/5mL	10g/5mL	0.88
A3L1221-03RE1	Soil	EPA 8082A	12/13/23 14:31	12/14/23 05:09	11.06g/5mL	10g/5mL	0.90
A3L1221-04	Soil	EPA 8082A	12/13/23 12:15	12/14/23 05:09	11.73g/5mL	10g/5mL	0.85
A3L1221-05RE1	Soil	EPA 8082A	12/13/23 11:00	12/14/23 05:09	11.96g/5mL	10g/5mL	0.84
A3L1221-06	Soil	EPA 8082A	12/13/23 10:00	12/14/23 05:09	11.22g/5mL	10g/5mL	0.89
A3L1221-07	Soil	EPA 8082A	12/12/23 14:30	12/14/23 05:09	11.98g/5mL	10g/5mL	0.84

Total Metals by EPA 6020B (ICPMS)

Prep: EPA 3051A					Sample	Default	RL Prep
Lab Number	Matrix	Method	Sampled	Prepared	Initial/Final	Initial/Final	Factor
<u>Batch: 23L0490</u>							
A3L1221-01	Soil	EPA 6020B	12/13/23 13:15	12/13/23 17:49	0.47g/50mL	0.5g/50mL	1.06
A3L1221-02	Soil	EPA 6020B	12/13/23 13:00	12/13/23 17:49	0.462g/50mL	0.5g/50mL	1.08
A3L1221-03	Soil	EPA 6020B	12/13/23 14:31	12/13/23 17:49	0.51g/50mL	0.5g/50mL	0.98
A3L1221-04	Soil	EPA 6020B	12/13/23 12:15	12/13/23 17:49	0.479g/50mL	0.5g/50mL	1.04
A3L1221-05	Soil	EPA 6020B	12/13/23 11:00	12/13/23 17:49	0.507g/50mL	0.5g/50mL	0.99
A3L1221-06	Soil	EPA 6020B	12/13/23 10:00	12/13/23 17:49	0.515g/50mL	0.5g/50mL	0.97
A3L1221-07	Soil	EPA 6020B	12/12/23 14:30	12/13/23 17:49	0.516g/50mL	0.5g/50mL	0.97
A3L1221-08	Soil	EPA 6020B	12/13/23 14:55	12/13/23 17:49	0.455g/50mL	0.5g/50mL	1.10

Percent Dry Weight

Prep: Total Solids (Dry Weight) - 2022					Sample	Default	RL Prep
Lab Number	Matrix	Method	Sampled	Prepared	Initial/Final	Initial/Final	Factor
<u>Batch: 23L0527</u>							
A3L1221-01	Soil	EPA 8000D	12/13/23 13:15	12/14/23 10:17			NA
A3L1221-02	Soil	EPA 8000D	12/13/23 13:00	12/14/23 10:17			NA
A3L1221-03	Soil	EPA 8000D	12/13/23 14:31	12/14/23 10:17			NA
A3L1221-04	Soil	EPA 8000D	12/13/23 12:15	12/14/23 10:17			NA
A3L1221-05	Soil	EPA 8000D	12/13/23 11:00	12/14/23 10:17			NA
A3L1221-06	Soil	EPA 8000D	12/13/23 10:00	12/14/23 10:17			NA
A3L1221-07	Soil	EPA 8000D	12/12/23 14:30	12/14/23 10:17			NA
A3L1221-08	Soil	EPA 8000D	12/13/23 14:55	12/14/23 10:17			NA

Apex Laboratories

Philip Nerenberg, Lab Director

The results in this report apply to the samples analyzed in accordance with the chain of custody document(s) and updated by any subsequent written communications. This analytical report must be reproduced in its entirety.



ANALYTICAL REPORT

Apex Laboratories, LLC

6700 S.W. Sandburg Street
Tigard, OR 97223
503-718-2323
ORELAP ID: OR100062

Maul Foster & Alongi, INC. 3140 NE Broadway Street Portland, OR 97232	Project: 205 Auto Salvage Project Number: 0106.30.001 Project Manager: Dana Domenighini	Report ID: A3L1221 - 12 15 23 1559
----------------------------------------------------------------------------------------	--------------------------------------------------------------------------------------------------------------------	----------------------------------------------

QUALIFIER DEFINITIONS

Client Sample and Quality Control (QC) Sample Qualifier Definitions:

Apex Laboratories

- C-07** Extract has undergone Sulfuric Acid Cleanup by EPA 3665A, Sulfur Cleanup by EPA 3660B, and Florisil Cleanup by EPA 3620B in order to minimize matrix interference.
- J** Estimated Result. Result detected below the lowest point of the calibration curve, but above the specified MDL.
- P-12** Result estimated due to the presence of multiple PCB Aroclors and/or PCB congeners not defined as Aroclors.
- S-05** Surrogate recovery is estimated due to sample dilution required for high analyte concentration and/or matrix interference.

Apex Laboratories

The results in this report apply to the samples analyzed in accordance with the chain of custody document(s) and updated by any subsequent written communications. This analytical report must be reproduced in its entirety.

Philip Nerenberg, Lab Director



ANALYTICAL REPORT

Apex Laboratories, LLC

6700 S.W. Sandburg Street
Tigard, OR 97223
503-718-2323
ORELAP ID: OR100062

Maul Foster & Alongi, INC. 3140 NE Broadway Street Portland, OR 97232	Project: 205 Auto Salvage Project Number: 0106.30.001 Project Manager: Dana Domenighini	Report ID: A3L1221 - 12 15 23 1559
----------------------------------------------------------------------------------------	--------------------------------------------------------------------------------------------------------------------	----------------------------------------------

REPORTING NOTES AND CONVENTIONS:

Abbreviations:

- DET Analyte DETECTED at or above the detection or reporting limit.
- ND Analyte NOT DETECTED at or above the detection or reporting limit.
- NR Result Not Reported
- RPD Relative Percent Difference. RPDs for Matrix Spikes and Matrix Spike Duplicates are based on concentration, not recovery.

Detection Limits: Limit of Detection (LOD)

Limits of Detection (LODs) are normally set at a level of one half the validated Limit of Quantitation (LOQ).
If no value is listed ('-----'), then the data has not been evaluated below the Reporting Limit.

Reporting Limits: Limit of Quantitation (LOQ)

Validated Limits of Quantitation (LOQs) are reported as the Reporting Limits for all analyses where the LOQ, MRL, PQL or CRL are requested. The LOQ represents a level at or above the low point of the calibration curve, that has been validated according to Apex Laboratories' comprehensive LOQ policies and procedures.

Reporting Conventions:

Basis: Results for soil samples are generally reported on a 100% dry weight basis.
The Result Basis is listed following the units as " dry", " wet", or " " (blank) designation.

- " dry" Sample results and Reporting Limits are reported on a dry weight basis. (i.e. "ug/kg dry")
See Percent Solids section for details of dry weight analysis.
- " wet" Sample results and Reporting Limits for this analysis are normally dry weight corrected, but have not been modified in this case.
- " " Results without 'wet' or 'dry' designation are not normally dry weight corrected. These results are considered 'As Received'.

Results for Volatiles analyses on soils and sediments that are reported on a "dry weight" basis include the water miscible solvent (WMS) correction referenced in the EPA 8000 Method guidance documents. Solid and Liquid samples reported on an "As Received" basis do not have the WMS correction applied, as dry weight was not performed.

QC Source:

In cases where there is insufficient sample provided for Sample Duplicates and/or Matrix Spikes, a Lab Control Sample Duplicate (LCS Dup) may be analyzed to demonstrate accuracy and precision of the extraction batch.

Non-Client Batch QC Samples (Duplicates and Matrix Spike/Duplicates) may not be included in this report. Please request a Full QC report if this data is required.

Miscellaneous Notes:

- " --- " QC results are not applicable. For example, % Recoveries for Blanks and Duplicates, % RPD for Blanks, Blank Spikes and Matrix Spikes, etc.
- " *** " Used to indicate a possible discrepancy with the Sample and Sample Duplicate results when the %RPD is not available. In this case, either the Sample or the Sample Duplicate has a reportable result for this analyte, while the other is Non Detect (ND).

Apex Laboratories

The results in this report apply to the samples analyzed in accordance with the chain of custody document(s) and updated by any subsequent written communications. This analytical report must be reproduced in its entirety.



ANALYTICAL REPORT

Apex Laboratories, LLC

6700 S.W. Sandburg Street
Tigard, OR 97223
503-718-2323
ORELAP ID: OR100062

Maul Foster & Alongi, INC. 3140 NE Broadway Street Portland, OR 97232	Project: 205 Auto Salvage Project Number: 0106.30.001 Project Manager: Dana Domenighini	Report ID: A3L1221 - 12 15 23 1559
----------------------------------------------------------------------------------------	--------------------------------------------------------------------------------------------------------------------	----------------------------------------------

REPORTING NOTES AND CONVENTIONS (Cont.):

Blanks:

- Standard practice is to evaluate the results from Blank QC Samples down to a level equal to ½ the Reporting Limit (RL).
- For Blank hits falling between ½ the RL and the RL (J flagged hits), the associated sample and QC data will receive a 'B-02' qualifier.
- For Blank hits above the RL, the associated sample and QC data will receive a 'B' qualifier, per Apex Laboratories' Blank Policy.
- For further details, please request a copy of this document.
- Sample results flagged with a 'B' or 'B-02' qualifier are potentially biased high if the sample results are less than ten times the level found in the blank for inorganic analyses, or less than five times the level found in the blank for organic analyses.
- 'B' and 'B-02' qualifications are only applied to sample results detected above the Reporting Level, if results are not reported to the MDL.

Preparation Notes:

Mixed Matrix Samples:

Water Samples:

Water samples containing significant amounts of sediment are decanted or separated prior to extraction, and only the water portion analyzed, unless otherwise directed by the client.

Soil and Sediment Samples:

Soil and Sediment samples containing significant amounts of water are decanted prior to extraction, and only the solid portion analyzed, unless otherwise directed by the client.

Sampling and Preservation Notes:

Certain regulatory programs, such as National Pollutant Discharge Elimination System (NPDES), require that activities such as sample filtration (for dissolved metals, orthophosphate, hexavalent chromium, etc.) and testing of short hold analytes (pH, Dissolved Oxygen, etc.) be performed in the field (on-site) within a short time window. In addition, sample matrix spikes are required for some analyses, and sufficient volume must be provided, and billable site specific QC requested, if this is required. All regulatory permits should be reviewed to ensure that these requirements are being met.

Data users should be aware of which regulations pertain to the samples they submit for testing. If related sample collection activities are not approved for a particular regulatory program, results should be considered estimates. Apex Laboratories will qualify these analytes according to the most stringent requirements, however results for samples that are for non-regulatory purposes may be acceptable.

Samples that have been filtered and preserved at Apex Laboratories per client request are listed in the preparation section of the report with the date and time of filtration listed.

Apex Laboratories maintains detailed records on sample receipt, including client label verification, cooler temperature, sample preservation, hold time compliance and field filtration. Data is qualified as necessary, and the lack of qualification indicates compliance with required parameters.

Apex Laboratories

The results in this report apply to the samples analyzed in accordance with the chain of custody document(s) and updated by any subsequent written communications. This analytical report must be reproduced in its entirety.

Philip Nerenberg, Lab Director



ANALYTICAL REPORT

Apex Laboratories, LLC

6700 S.W. Sandburg Street
Tigard, OR 97223
503-718-2323
ORELAP ID: OR100062

Table with 3 columns: Client (Maul Foster & Alongi, INC.), Project (205 Auto Salvage), and Report ID (A3L1221 - 12 15 23 1559).

LABORATORY ACCREDITATION INFORMATION

ORELAP Certification ID: OR100062 (Primary Accreditation) -
EPA ID: OR01039

All methods and analytes reported from work performed at Apex Laboratories are included on Apex Laboratories' ORELAP Scope of Certification, with the exception of any analyte(s) listed below:

Apex Laboratories

Table header with columns: Matrix, Analysis, TNI_ID, Analyte, TNI_ID, Accreditation

All reported analytes are included in Apex Laboratories' current ORELAP scope.

Secondary Accreditations

Apex Laboratories also maintains reciprocal accreditation with non-TNI states (Washington DOE), as well as other state specific accreditations not listed here.

Subcontract Laboratory Accreditations

Subcontracted data falls outside of Apex Laboratories' Scope of Accreditation. Please see the Subcontract Laboratory report for full details, or contact your Project Manager for more information.

Field Testing Parameters

Results for Field Tested data are provided by the client or sampler, and fall outside of Apex Laboratories' Scope of Accreditation.

Apex Laboratories

Handwritten signature of Philip Nerenberg

The results in this report apply to the samples analyzed in accordance with the chain of custody document(s) and updated by any subsequent written communications. This analytical report must be reproduced in its entirety.



ANALYTICAL REPORT

Apex Laboratories, LLC

6700 S.W. Sandburg Street
Tigard, OR 97223
503-718-2323
ORELAP ID: OR100062

Maul Foster & Alongi, INC. 3140 NE Broadway Street Portland, OR 97232	Project: 205 Auto Salvage Project Number: 0106.30.001 Project Manager: Dana Domenighini	Report ID: A3L1221 - 12 15 23 1559
----------------------------------------------------------------------------------------	--------------------------------------------------------------------------------------------------------------------	-----------------------------------------------------

APEX LABS COOLER RECEIPT FORM

Client: Maul Foster & Alongi Element WO#: A3 L1221

Project/Project #: 205 Auto Salvage / 0106.30.001

Delivery Info:
 Date/time received: 12/13/23 @ 1650 By: RHP
 Delivered by: Apex Client ESS FedEx UPS Radio Morgan SDS Evergreen Other

Cooler Inspection Date/time inspected: 12/13/23 @ 1650 By: RHP
 Chain of Custody included? Yes No
 Signed/dated by client? Yes No

	Cooler #1	Cooler #2	Cooler #3	Cooler #4	Cooler #5	Cooler #6	Cooler #7
Temperature (°C)	<u>0.4</u>						
Custody seals? (Y/N)	<u>N</u>						
Received on ice? (Y/N)	<u>Y</u>						
Temp. blanks? (Y/N)	<u>Y</u>						
Ice type: (Gel/Real/Other)	<u>Real</u>						
Condition (In/Out):	<u>IN</u>						

Cooler out of temp? (Y/N) Possible reason why: _____
 Green dots applied to out of temperature samples? Yes No
 Out of temperature samples form initiated? Yes No

Sample Inspection: Date/time inspected: 12/13/23 @ 17:25 By: ZAM
 All samples intact? Yes No Comments: _____

 Bottle labels/COCs agree? Yes No Comments: _____

 COC/container discrepancies form initiated? Yes No
 Containers/volumes received appropriate for analysis? Yes No Comments: _____

 Do VOA vials have visible headspace? Yes No NA
 Comments: _____
 Water samples: pH checked: Yes No NA pH appropriate? Yes No NA pH ID: _____
 Comments: _____

Additional information:

Labeled by: ZAM Witness: RHP Cooler Inspected by: ZAM Form Y-003 R-01

Appendix F

Data Validation Memorandum



MAUL
FOSTER
ALONGI

Data Quality Assurance/Quality Control Review

Project No. M0106.30.001 | December 15, 2023 | 205 Real Estate Inc.

Maul Foster & Alongi, Inc. (MFA), conducted an independent Stage 2A review of the quality of analytical results for soil samples collected on December 12 and 13, 2023, at the 205 Auto Salvage facility located at 5605 NE 105th Avenue in Portland, Oregon.

Apex Laboratories, LLC (Apex). performed the analyses. MFA reviewed Apex report number A3L1221. The analyses performed and the samples analyzed are listed in the following tables.

Analysis	Reference
Percent dry weight	EPA 8000D
Polychlorinated biphenyls as Aroclors	EPA 8082A
Total arsenic	EPA 6020B

Note

EPA = U.S. Environmental Protection Agency.

Samples Analyzed	
Report A3L1221	
GC01 Composite	GC05 Composite
GC02 Composite	GC06 Composite
GC03 Composite	GC07 Composite
GC04 Composite	IF01 Composite

Data Qualification

Analytical results were evaluated according to applicable sections of U.S. Environmental Protection Agency (EPA) guidelines for data review (EPA 2020a, 2020b) and appropriate laboratory- and method-specific guidelines (Apex 2023, EPA 1986).

Based on the results of the data quality review procedures described below, the data, with the appropriate final data qualifiers assigned, are considered acceptable for their intended use. Final data qualifiers represent qualifiers originating from the laboratory and accepted by the reviewer, and data qualifiers assigned by the reviewer during validation.

Final data qualifiers:

- J = result is estimated.
- U = result is non-detect at the laboratory detection limit (LDL).

In report A3L1221, Apex noted that, to minimize matrix interference, EPA Method 8082A samples and associated batch quality control samples were processed with sulfuric acid cleanup by EPA Method 3665A, sulfur cleanup by EPA Method 3660B, and Florisil cleanup by EPA Method 3620B. No qualification by the reviewer was required.

In report A3L1221, Apex flagged multiple EPA Method 8082A sample results as estimated due to weathering or the presence of multiple polychlorinated biphenyl (PCB) Aroclors and/or PCB congeners not defined as Aroclors. The reviewer qualified the associated sample results with J, as shown in the following table.

Report	Sample	Analyte	Original Result (ug/kg)	Qualified Result (ug/kg)
A3L1221	GC01 Composite	Aroclor 1254	47.7	47.7 J
	GC04 Composite	Aroclor 1242	18.6	18.6 J
		Aroclor 1254	172	172 J
		Aroclor 1260	23.3	23.3 J
	GC06 Composite	Aroclor 1254	61.1	61.1 J
	GC07 Composite	Aroclor 1254	158	158 J
		Aroclor 1260	36.6	36.6 J

Notes

J = result is estimated.

ug/kg = micrograms per kilogram.

Sample Conditions

Sample Custody

Sample custody was appropriately documented on the chain-of-custody form accompanying the report.

Holding Times

Extractions and analyses were performed within the recommended holding times.

Preservation and Sample Storage

The samples were preserved and stored appropriately.

Reporting Limits

The laboratory evaluated results to LDLs. Samples that required dilutions because of high analyte concentrations, matrix interferences, and/or dilutions necessary for preparation and/or analysis were reported with raised LDLs and MRLs.

The laboratory qualified results between the LDL and the MRL with J, as estimated.

Blanks

Method Blanks

Laboratory method blanks are used to assess whether laboratory contamination was introduced during sample preparation and analysis. Laboratory method blank analyses were performed at the required frequencies. For purposes of data qualification, the laboratory method blanks were associated with all samples prepared in the analytical batch.

All laboratory method blank results were non-detect to LDLs.

Equipment Rinsate Blanks

Equipment rinsate blanks are used to evaluate field equipment decontamination. These blanks were not required for this sampling event.

Trip Blanks

Trip blanks are used to evaluate whether volatile organic compound contamination was introduced during sample storage and during shipment between the sampling location and the laboratory.

Trip blank samples were not required for this sampling event because samples were not analyzed for volatile organic compounds.

Laboratory Control Sample and Laboratory Control Sample Duplicate Results

A laboratory control sample (LCS) and a laboratory control sample duplicate (LCSD) are spiked with target analytes to provide information about laboratory precision and accuracy. LCSDs were not reported in A3L1221, and laboratory precision was evaluated using laboratory duplicate results. The LCSs were prepared and analyzed at the required frequency.

All LCS results were within acceptance limits for percent recovery.

Laboratory Duplicate Results

Laboratory duplicate results are used to evaluate laboratory precision. All laboratory duplicate samples were prepared and analyzed at the required frequency.

All laboratory duplicate results met the acceptance criteria.

Matrix Spike and Matrix Spike Duplicate Results

Matrix spike (MS) and matrix spike duplicate (MSD) results are used to evaluate laboratory precision, accuracy, and the effect of the sample matrix on sample preparation and analysis. MSDs were not reported in A3L1221, and laboratory precision was evaluated using laboratory duplicate results. All MS samples were prepared and analyzed at the required frequency.

All MS results were within acceptance limits for percent recovery.

Surrogate Recovery Results

The samples were spiked with surrogate compounds to evaluate laboratory performance for individual samples for organic analyses.

All surrogate results were within percent recovery acceptance limits.

Field Duplicate Results

Field duplicate samples measure both field and laboratory precision. No field duplicates were submitted with report A3L1221.

Data Package

The data package was reviewed for transcription errors, omissions, and anomalies.

Report A3L1221 was revised on December 15, 2023, to report non-detect results to the LDL. No further action is required by the reviewer.

The chain-of-custody accompanying report A3L1221 did not have years listed. The reviewer confirmed with the field staff that it was omitted inadvertently, and the samples were collected in 2023. No further action is required by the reviewer.

No additional issues were found.

References

Apex. 2023. *Quality Systems Manual*. Rev. 11. Apex Laboratories, LLC: Tigard, OR. June 20.

EPA. 1986. *Test Methods for Evaluating Solid Waste, Physical/Chemical Methods*. EPA publication SW-846. 3rd ed. U.S. Environmental Protection Agency. Final updates I (1993), II (1995), IIA (1994), IIB (1995), III (1997), IIIA (1999), IIIB (2005), IV (2008), V (2015), VI phase I (2017), VI phase II (2018), VI phase III (2019), VII phase I (2019), and VII phase II (2020).

EPA. 2020a. *National Functional Guidelines for Inorganic Superfund Methods Data Review*. EPA 542-R-20-006. U.S. Environmental Protection Agency, Office of Superfund Remediation and Technology Innovation: Washington, DC. November.

EPA. 2020b. *National Functional Guidelines for Organic Superfund Methods Data Review*. EPA 540-R-20-005. U.S. Environmental Protection Agency, Office of Superfund Remediation and Technology Innovation: Washington, DC. November.

Appendix G

Import Materials Documentation



MAUL
FOSTER
ALONGI



Farmington Aggregate

Ticket No.: 59285288

Date : 12/13/2023 Time : 10:49:59AM

Vehicle : CAS22SS CASEDAY 6 AXLE
Customer : 622928 TELLURIC ENTERPRISES LLC
Order : MASTER 205 AUTO WRECKING, PORTLAND

P.O. : 9186
Product : 24991120 1 1/2"- 0 CRUSHED

17.63 Ton

TERMS: NET - CASH SALES PAYABLE UPON PICKUP OR DELIVERY. CHARGE SALES DUE AND PAYABLE BY THE 10TH OF MONTH FOLLOWING PURCHASE. A service charge of 1.5% per month, or a minimum of \$1.00, will be made on the unpaid balance at the end of the following month's billing cycle. This is an ANNUAL PERCENTAGE RATE OF 18%. PERSONAL NOTICE: We reserve the right to claim lien for all labor and material furnished on this job according to OREGON REVISED STATUTE 87.021

Received : _____

CUSTOMER COPY

Table with 4 columns: , Pounds, Tons, Metric. Rows: Gross (65180, 32.59, 29.57), Tare (29920*, 14.96*, 13.57*), Net (35260, 17.63, 15.99)

* P. T.

Table with 2 columns: , 299.71. Rows: Ordered, Remaining, Today: 95.79 Loads: 5

Weighmaster: Kimberly Beierle

As the owner or contractor for this job, I hereby save and hold harmless from any and all liability Knife River or their driver as a result of the Knife River Vehicle being driven inside property or curblines. I also accept full responsibility for any property damage or any equipment damage to Knife River which may occur beyond this point. I further agree to pay any towing or stand-by charges



Farmington Aggregate

Ticket No.: 59285288

Date : 12/13/2023 Time : 10:49:59AM

Vehicle : CAS22SS CASEDAY 6 AXLE
Customer : 622928 TELLURIC ENTERPRISES LLC
Order : MASTER 205 AUTO WRECKING, PORTLAND

P.O. : 9186
Product : 24991120 1 1/2"- 0 CRUSHED

17.63 Ton

TERMS: NET - CASH SALES PAYABLE UPON PICKUP OR DELIVERY. CHARGE SALES DUE AND PAYABLE BY THE 10TH OF MONTH FOLLOWING PURCHASE. A service charge of 1.5% per month, or a minimum of \$1.00, will be made on the unpaid balance at the end of the following month's billing cycle. This is an ANNUAL PERCENTAGE RATE OF 18%. PERSONAL NOTICE: We reserve the right to claim lien for all labor and material furnished on this job according to OREGON REVISED STATUTE 87.021

Received : _____

OFFICE COPY

Table with 4 columns: , Pounds, Tons, Metric. Rows: Gross (65180, 32.59, 29.57), Tare (29920*, 14.96*, 13.57*), Net (35260, 17.63, 15.99)

* P. T.

Table with 2 columns: , 299.71. Rows: Ordered, Remaining, Today: 95.79 Loads: 5

Weighmaster: Kimberly Beierle

As the owner or contractor for this job, I hereby save and hold harmless from any and all liability Knife River or their driver as a result of the Knife River Vehicle being driven inside property or curblines. I also accept full responsibility for any property damage or any equipment damage to Knife River which may occur beyond this point. I further agree to pay any towing or stand-by charges



Farmington Aggregate

Ticket No.: 59285288

Date : 12/13/2023 Time : 10:49:59AM

Vehicle : CAS22SS CASEDAY 6 AXLE
Customer : 622928 TELLURIC ENTERPRISES LLC
Order : MASTER 205 AUTO WRECKING, PORTLAND

P.O. : 9186
Product : 24991120 1 1/2"- 0 CRUSHED

17.63 Ton

TERMS: NET - CASH SALES PAYABLE UPON PICKUP OR DELIVERY. CHARGE SALES DUE AND PAYABLE BY THE 10TH OF MONTH FOLLOWING PURCHASE. A service charge of 1.5% per month, or a minimum of \$1.00, will be made on the unpaid balance at the end of the following month's billing cycle. This is an ANNUAL PERCENTAGE RATE OF 18%. PERSONAL NOTICE: We reserve the right to claim lien for all labor and material furnished on this job according to OREGON REVISED STATUTE 87.021

Received : _____

TANGENT COPY

Table with 4 columns: , Pounds, Tons, Metric. Rows: Gross (65180, 32.59, 29.57), Tare (29920*, 14.96*, 13.57*), Net (35260, 17.63, 15.99)

* P. T.

Table with 2 columns: , 299.71. Rows: Ordered, Remaining, Today: 95.79 Loads: 5

Weighmaster: Kimberly Beierle

As the owner or contractor for this job, I hereby save and hold harmless from any and all liability Knife River or their driver as a result of the Knife River Vehicle being driven inside property or curblines. I also accept full responsibility for any property damage or any equipment damage to Knife River which may occur beyond this point. I further agree to pay any towing or stand-by charges



Farmington Aggregate

Ticket No.: 59285063

Date : 12/13/2023 Time : 7:36:03AM

Vehicle : CAS22SS CASEDAY 6 AXLE
Customer : 622928 TELLURIC ENTERPRISES LLC
Order : MASTER 205 AUTO WRECKING, PORTLAND

P.O. : 9186
Product : 24991120 1 1/2"- 0 CRUSHED 19.27 Ton

TERMS: NET - CASH SALES PAYABLE UPON PICKUP OR DELIVERY. CHARGE SALES DUE AND PAYABLE BY THE 10TH OF MONTH FOLLOWING PURCHASE. A service charge of 1.5% per month, or a minimum of \$1.00, will be made on the unpaid balance at the end of the following month's billing cycle. This is an ANNUAL PERCENTAGE RATE OF 18%. PERSONAL NOTICE: We reserve the right to claim lien for all labor and material furnished on this job according to OREGON REVISED STATUTE 87.021

Received : _____

CUSTOMER COPY

Table with 3 columns: Pounds, Tons, Metric. Rows: Gross (68460, 34.23, 31.05), Tare (29920*, 14.96*, 13.57*), Net (38540, 19.27, 17.48)

* P. T.

Table with 2 columns: Item, Value. Rows: Ordered (327.59), Remaining, Today: (37.31 Loads: 2)

Weighmaster: Kimberly Beierle

As the owner or contractor for this job, I hereby save and hold harmless from any and all liability Knife River or their driver as a result of the Knife River Vehicle being driven inside property or curblines. I also accept full responsibility for any property damage or any equipment damage to Knife River which may occur beyond this point. I further agree to pay any towing or stand-by charges



Farmington Aggregate

Ticket No.: 59285063

Date : 12/13/2023 Time : 7:36:03AM

Vehicle : CAS22SS CASEDAY 6 AXLE
Customer : 622928 TELLURIC ENTERPRISES LLC
Order : MASTER 205 AUTO WRECKING, PORTLAND

P.O. : 9186
Product : 24991120 1 1/2"- 0 CRUSHED 19.27 Ton

TERMS: NET - CASH SALES PAYABLE UPON PICKUP OR DELIVERY. CHARGE SALES DUE AND PAYABLE BY THE 10TH OF MONTH FOLLOWING PURCHASE. A service charge of 1.5% per month, or a minimum of \$1.00, will be made on the unpaid balance at the end of the following month's billing cycle. This is an ANNUAL PERCENTAGE RATE OF 18%. PERSONAL NOTICE: We reserve the right to claim lien for all labor and material furnished on this job according to OREGON REVISED STATUTE 87.021

Received : _____

OFFICE COPY

Table with 3 columns: Pounds, Tons, Metric. Rows: Gross (68460, 34.23, 31.05), Tare (29920*, 14.96*, 13.57*), Net (38540, 19.27, 17.48)

* P. T.

Table with 2 columns: Item, Value. Rows: Ordered (327.59), Remaining, Today: (37.31 Loads: 2)

Weighmaster: Kimberly Beierle

As the owner or contractor for this job, I hereby save and hold harmless from any and all liability Knife River or their driver as a result of the Knife River Vehicle being driven inside property or curblines. I also accept full responsibility for any property damage or any equipment damage to Knife River which may occur beyond this point. I further agree to pay any towing or stand-by charges



Farmington Aggregate

Ticket No.: 59285063

Date : 12/13/2023 Time : 7:36:03AM

Vehicle : CAS22SS CASEDAY 6 AXLE
Customer : 622928 TELLURIC ENTERPRISES LLC
Order : MASTER 205 AUTO WRECKING, PORTLAND

P.O. : 9186
Product : 24991120 1 1/2"- 0 CRUSHED 19.27 Ton

TERMS: NET - CASH SALES PAYABLE UPON PICKUP OR DELIVERY. CHARGE SALES DUE AND PAYABLE BY THE 10TH OF MONTH FOLLOWING PURCHASE. A service charge of 1.5% per month, or a minimum of \$1.00, will be made on the unpaid balance at the end of the following month's billing cycle. This is an ANNUAL PERCENTAGE RATE OF 18%. PERSONAL NOTICE: We reserve the right to claim lien for all labor and material furnished on this job according to OREGON REVISED STATUTE 87.021

Received : _____

TANGENT COPY

Table with 3 columns: Pounds, Tons, Metric. Rows: Gross (68460, 34.23, 31.05), Tare (29920*, 14.96*, 13.57*), Net (38540, 19.27, 17.48)

* P. T.

Table with 2 columns: Item, Value. Rows: Ordered (327.59), Remaining, Today: (37.31 Loads: 2)

Weighmaster: Kimberly Beierle

As the owner or contractor for this job, I hereby save and hold harmless from any and all liability Knife River or their driver as a result of the Knife River Vehicle being driven inside property or curblines. I also accept full responsibility for any property damage or any equipment damage to Knife River which may occur beyond this point. I further agree to pay any towing or stand-by charges



Farmington Aggregate

Ticket No.: 59285539

Date: 12/13/2023 Time: 1:59:21PM

Vehicle: CAS16SS CASADAY 6 AXLE
Customer: 622928 TELLURIC ENTERPRISES LLC
Order: MASTER 205 AUTO WRECKING, PORTLAND

P.O.: 9186
Product: 24991120 1 1/2"- 0 CRUSHED

17.23 Ton

TERMS: NET - CASH SALES PAYABLE UPON PICKUP OR DELIVERY. CHARGE SALES DUE AND PAYABLE BY THE 10TH OF MONTH FOLLOWING PURCHASE...

Received: _____

CUSTOMER COPY

Table with 3 columns: Pounds, Tons, Metric. Rows: Gross (62460, 31.23, 28.33), Tare (28000, 14.00, 12.70), Net (34460, 17.23, 15.63)

Table with 2 columns: Ordered (292.91), Remaining. Today: 135.69 Loads: 7

Weighmaster: Kimberly Beierle

As the owner or contractor for this job, I hereby save and hold harmless from any and all liability Knife River or their driver as a result of the Knife River Vehicle being driven inside property or curblines...



Farmington Aggregate

Ticket No.: 59285539

Date: 12/13/2023 Time: 1:59:21PM

Vehicle: CAS16SS CASADAY 6 AXLE
Customer: 622928 TELLURIC ENTERPRISES LLC
Order: MASTER 205 AUTO WRECKING, PORTLAND

P.O.: 9186
Product: 24991120 1 1/2"- 0 CRUSHED

17.23 Ton

TERMS: NET - CASH SALES PAYABLE UPON PICKUP OR DELIVERY. CHARGE SALES DUE AND PAYABLE BY THE 10TH OF MONTH FOLLOWING PURCHASE...

Received: _____

OFFICE COPY

Table with 3 columns: Pounds, Tons, Metric. Rows: Gross (62460, 31.23, 28.33), Tare (28000, 14.00, 12.70), Net (34460, 17.23, 15.63)

Table with 2 columns: Ordered (292.91), Remaining. Today: 135.69 Loads: 7

Weighmaster: Kimberly Beierle

As the owner or contractor for this job, I hereby save and hold harmless from any and all liability Knife River or their driver as a result of the Knife River Vehicle being driven inside property or curblines...



Farmington Aggregate

Ticket No.: 59285539

Date: 12/13/2023 Time: 1:59:21PM

Vehicle: CAS16SS CASADAY 6 AXLE
Customer: 622928 TELLURIC ENTERPRISES LLC
Order: MASTER 205 AUTO WRECKING, PORTLAND

P.O.: 9186
Product: 24991120 1 1/2"- 0 CRUSHED

17.23 Ton

TERMS: NET - CASH SALES PAYABLE UPON PICKUP OR DELIVERY. CHARGE SALES DUE AND PAYABLE BY THE 10TH OF MONTH FOLLOWING PURCHASE...

Received: _____

TANGENT COPY

Table with 3 columns: Pounds, Tons, Metric. Rows: Gross (62460, 31.23, 28.33), Tare (28000, 14.00, 12.70), Net (34460, 17.23, 15.63)

Table with 2 columns: Ordered (292.91), Remaining. Today: 135.69 Loads: 7

Weighmaster: Kimberly Beierle

As the owner or contractor for this job, I hereby save and hold harmless from any and all liability Knife River or their driver as a result of the Knife River Vehicle being driven inside property or curblines...



Farmington Aggregate

Ticket No.: 59285276

Date : 12/13/2023 Time : 10:41:49AM

Vehicle : CAS16SS CASADAY 6 AXLE
Customer : 622928 TELLURIC ENTERPRISES LLC
Order : MASTER 205 AUTO WRECKING, PORTLAND

P.O. : 9186
Product : 24991120 1 1/2"- 0 CRUSHED

18.18 Ton

TERMS: NET - CASH SALES PAYABLE UPON PICKUP OR DELIVERY. CHARGE SALES DUE AND PAYABLE BY THE 10TH OF MONTH FOLLOWING PURCHASE. A service charge of 1.5% per month, or a minimum of \$1.00, will be made on the unpaid balance at the end of the following month's billing cycle. This is an ANNUAL PERCENTAGE RATE OF 18%. PERSONAL NOTICE: We reserve the right to claim lien for all labor and material furnished on this job according to OREGON REVISED STATUTE 87.021

Received : _____

CUSTOMER COPY

Table with 4 columns: Pounds, Tons, Metric, and values for Gross, Tare, Net.

* P. T.

Table with 2 columns: Ordered, Remaining, Today: 78.16 Loads: 4

Weighmaster: Kimberly Beierle

As the owner or contractor for this job, I hereby save and hold harmless from any and all liability Knife River or their driver as a result of the Knife River Vehicle being driven inside property or curblines. I also accept full responsibility for any property damage or any equipment damage to Knife River which may occur beyond this point. I further agree to pay any towing or stand-by charges



Farmington Aggregate

Ticket No.: 59285276

Date : 12/13/2023 Time : 10:41:49AM

Vehicle : CAS16SS CASADAY 6 AXLE
Customer : 622928 TELLURIC ENTERPRISES LLC
Order : MASTER 205 AUTO WRECKING, PORTLAND

P.O. : 9186
Product : 24991120 1 1/2"- 0 CRUSHED

18.18 Ton

TERMS: NET - CASH SALES PAYABLE UPON PICKUP OR DELIVERY. CHARGE SALES DUE AND PAYABLE BY THE 10TH OF MONTH FOLLOWING PURCHASE. A service charge of 1.5% per month, or a minimum of \$1.00, will be made on the unpaid balance at the end of the following month's billing cycle. This is an ANNUAL PERCENTAGE RATE OF 18%. PERSONAL NOTICE: We reserve the right to claim lien for all labor and material furnished on this job according to OREGON REVISED STATUTE 87.021

Received : _____

OFFICE COPY

Table with 4 columns: Pounds, Tons, Metric, and values for Gross, Tare, Net.

* P. T.

Table with 2 columns: Ordered, Remaining, Today: 78.16 Loads: 4

Weighmaster: Kimberly Beierle

As the owner or contractor for this job, I hereby save and hold harmless from any and all liability Knife River or their driver as a result of the Knife River Vehicle being driven inside property or curblines. I also accept full responsibility for any property damage or any equipment damage to Knife River which may occur beyond this point. I further agree to pay any towing or stand-by charges



Farmington Aggregate

Ticket No.: 59285276

Date : 12/13/2023 Time : 10:41:49AM

Vehicle : CAS16SS CASADAY 6 AXLE
Customer : 622928 TELLURIC ENTERPRISES LLC
Order : MASTER 205 AUTO WRECKING, PORTLAND

P.O. : 9186
Product : 24991120 1 1/2"- 0 CRUSHED

18.18 Ton

TERMS: NET - CASH SALES PAYABLE UPON PICKUP OR DELIVERY. CHARGE SALES DUE AND PAYABLE BY THE 10TH OF MONTH FOLLOWING PURCHASE. A service charge of 1.5% per month, or a minimum of \$1.00, will be made on the unpaid balance at the end of the following month's billing cycle. This is an ANNUAL PERCENTAGE RATE OF 18%. PERSONAL NOTICE: We reserve the right to claim lien for all labor and material furnished on this job according to OREGON REVISED STATUTE 87.021

Received : _____

TANGENT COPY

Table with 4 columns: Pounds, Tons, Metric, and values for Gross, Tare, Net.

* P. T.

Table with 2 columns: Ordered, Remaining, Today: 78.16 Loads: 4

Weighmaster: Kimberly Beierle

As the owner or contractor for this job, I hereby save and hold harmless from any and all liability Knife River or their driver as a result of the Knife River Vehicle being driven inside property or curblines. I also accept full responsibility for any property damage or any equipment damage to Knife River which may occur beyond this point. I further agree to pay any towing or stand-by charges



Farmington Aggregate

Ticket No.: 59285047

Date : 12/13/2023 Time : 7:18:40AM

Vehicle : CAS16SS CASADAY 6 AXLE
Customer : 622928 TELLURIC ENTERPRISES LLC
Order : MASTER 205 AUTO WRECKING, PORTLAND

P.O. : 9186
Product : 24991120 1 1/2"- 0 CRUSHED

18.04 Ton

TERMS: NET - CASH SALES PAYABLE UPON PICKUP OR DELIVERY. CHARGE SALES DUE AND PAYABLE BY THE 10TH OF MONTH FOLLOWING PURCHASE. A service charge of 1.5% per month, or a minimum of \$1.00, will be made on the unpaid balance at the end of the following month's billing cycle. This is an ANNUAL PERCENTAGE RATE OF 18%. PERSONAL NOTICE: We reserve the right to claim lien for all labor and material furnished on this job according to OREGON REVISED STATUTE 87.021

Received : _____

CUSTOMER COPY

Table with 4 columns: Pounds, Tons, Metric, and values for Gross, Tare, Net.

* P. T.

Table with 2 columns: Ordered, Remaining, Today, Loads.

Weighmaster: Kimberly Beierle

As the owner or contractor for this job, I hereby save and hold harmless from any and all liability Knife River or their driver as a result of the Knife River Vehicle being driven inside property or curblines. I also accept full responsibility for any property damage or any equipment damage to Knife River which may occur beyond this point. I further agree to pay any towing or stand-by charges

Farmington Aggregate

Ticket No.: 59285047



Date : 12/13/2023 Time : 7:18:40AM

Vehicle : CAS16SS CASADAY 6 AXLE
Customer : 622928 TELLURIC ENTERPRISES LLC
Order : MASTER 205 AUTO WRECKING, PORTLAND

P.O. : 9186
Product : 24991120 1 1/2"- 0 CRUSHED

18.04 Ton

TERMS: NET - CASH SALES PAYABLE UPON PICKUP OR DELIVERY. CHARGE SALES DUE AND PAYABLE BY THE 10TH OF MONTH FOLLOWING PURCHASE. A service charge of 1.5% per month, or a minimum of \$1.00, will be made on the unpaid balance at the end of the following month's billing cycle. This is an ANNUAL PERCENTAGE RATE OF 18%. PERSONAL NOTICE: We reserve the right to claim lien for all labor and material furnished on this job according to OREGON REVISED STATUTE 87.021

Received : _____

OFFICE COPY

Table with 4 columns: Pounds, Tons, Metric, and values for Gross, Tare, Net.

* P. T.

Table with 2 columns: Ordered, Remaining, Today, Loads.

Weighmaster: Kimberly Beierle

As the owner or contractor for this job, I hereby save and hold harmless from any and all liability Knife River or their driver as a result of the Knife River Vehicle being driven inside property or curblines. I also accept full responsibility for any property damage or any equipment damage to Knife River which may occur beyond this point. I further agree to pay any towing or stand-by charges

Farmington Aggregate

Ticket No.: 59285047



Date : 12/13/2023 Time : 7:18:40AM

Vehicle : CAS16SS CASADAY 6 AXLE
Customer : 622928 TELLURIC ENTERPRISES LLC
Order : MASTER 205 AUTO WRECKING, PORTLAND

P.O. : 9186
Product : 24991120 1 1/2"- 0 CRUSHED

18.04 Ton

TERMS: NET - CASH SALES PAYABLE UPON PICKUP OR DELIVERY. CHARGE SALES DUE AND PAYABLE BY THE 10TH OF MONTH FOLLOWING PURCHASE. A service charge of 1.5% per month, or a minimum of \$1.00, will be made on the unpaid balance at the end of the following month's billing cycle. This is an ANNUAL PERCENTAGE RATE OF 18%. PERSONAL NOTICE: We reserve the right to claim lien for all labor and material furnished on this job according to OREGON REVISED STATUTE 87.021

Received : _____

TANGENT COPY

Table with 4 columns: Pounds, Tons, Metric, and values for Gross, Tare, Net.

* P. T.

Table with 2 columns: Ordered, Remaining, Today, Loads.

Weighmaster: Kimberly Beierle

As the owner or contractor for this job, I hereby save and hold harmless from any and all liability Knife River or their driver as a result of the Knife River Vehicle being driven inside property or curblines. I also accept full responsibility for any property damage or any equipment damage to Knife River which may occur beyond this point. I further agree to pay any towing or stand-by charges



Angell Quarry
14545 NW St Helens Rd
Portland, OR 97231
FOR INFO PLEASE CALL
(503)-944-3570

Ticket No.: 20311812

Date: 12/13/2023 Time: 12:39:08PM

Vehicle: CAS22SS CASEDAY 6 AXLE
Customer: 622928 TELLURIC ENTERPRISES LLC
Order: MASTER 205 AUTO WRECKING, PORTLAND 5605 NE 11

P.O.:
Product: 24991120 1 1/2"- 0 CRUSHED

17.58 Ton

TERMS: NET - CASH SALES PAYABLE UPON PICKUP OR DELIVERY. CHARGE SALES DUE AND PAYABLE BY THE 10TH OF MONTH FOLLOWING PURCHASE. A service charge of 1.5% per month, or a minimum of \$1.00, will be made on the unpaid balance at the end of the following month's billing cycle. This is an ANNUAL PERCENTAGE RATE OF 18%. PERSONAL NOTICE: We reserve the right to claim lien for all labor and material furnished on this job according to OREGON REVISED STATUTE 87.021

Received: _____

CUSTOMER COPY

	Pounds	Tons	Metric
Gross	64840	32.42	29.41
Tare	29680	14.84	13.46
Net	35160	17.58	15.95

Ordered	298.86		
Remaining			
Today:	17.58	Loads:	1

Weighmaster: Sonja McBryde

As the owner or contractor for this job, I hereby save and hold harmless from any and all liability Knife River or their driver as a result of the Knife River Vehicle being driven inside property or curblines. I also accept full responsibility for any property damage or any equipment damage to Knife River which may occur beyond this point. I further agree to pay any towing or stand-by charges



Angell Quarry
14545 NW St Helens Rd
Portland, OR 97231
FOR INFO PLEASE CALL
(503)-944-3570

Ticket No.: 20311812

Date: 12/13/2023 Time: 12:39:08PM

Vehicle: CAS22SS CASEDAY 6 AXLE
Customer: 622928 TELLURIC ENTERPRISES LLC
Order: MASTER 205 AUTO WRECKING, PORTLAND 5605 NE 11

P.O.:
Product: 24991120 1 1/2"- 0 CRUSHED

17.58 Ton

TERMS: NET - CASH SALES PAYABLE UPON PICKUP OR DELIVERY. CHARGE SALES DUE AND PAYABLE BY THE 10TH OF MONTH FOLLOWING PURCHASE. A service charge of 1.5% per month, or a minimum of \$1.00, will be made on the unpaid balance at the end of the following month's billing cycle. This is an ANNUAL PERCENTAGE RATE OF 18%. PERSONAL NOTICE: We reserve the right to claim lien for all labor and material furnished on this job according to OREGON REVISED STATUTE 87.021

Received: _____

OFFICE COPY

	Pounds	Tons	Metric
Gross	64840	32.42	29.41
Tare	29680	14.84	13.46
Net	35160	17.58	15.95

Ordered	298.86		
Remaining			
Today:	17.58	Loads:	1

Weighmaster: Sonja McBryde

As the owner or contractor for this job, I hereby save and hold harmless from any and all liability Knife River or their driver as a result of the Knife River Vehicle being driven inside property or curblines. I also accept full responsibility for any property damage or any equipment damage to Knife River which may occur beyond this point. I further agree to pay any towing or stand-by charges



Angell Quarry
14545 NW St Helens Rd
Portland, OR 97231
FOR INFO PLEASE CALL
(503)-944-3570

Ticket No.: 20311812

Date: 12/13/2023 Time: 12:39:08PM

Vehicle: CAS22SS CASEDAY 6 AXLE
Customer: 622928 TELLURIC ENTERPRISES LLC
Order: MASTER 205 AUTO WRECKING, PORTLAND 5605 NE 11

P.O.:
Product: 24991120 1 1/2"- 0 CRUSHED

17.58 Ton

TERMS: NET - CASH SALES PAYABLE UPON PICKUP OR DELIVERY. CHARGE SALES DUE AND PAYABLE BY THE 10TH OF MONTH FOLLOWING PURCHASE. A service charge of 1.5% per month, or a minimum of \$1.00, will be made on the unpaid balance at the end of the following month's billing cycle. This is an ANNUAL PERCENTAGE RATE OF 18%. PERSONAL NOTICE: We reserve the right to claim lien for all labor and material furnished on this job according to OREGON REVISED STATUTE 87.021

Received: _____

TANGENT COPY

	Pounds	Tons	Metric
Gross	64840	32.42	29.41
Tare	29680	14.84	13.46
Net	35160	17.58	15.95

Ordered	298.86		
Remaining			
Today:	17.58	Loads:	1

Weighmaster: Sonja McBryde

As the owner or contractor for this job, I hereby save and hold harmless from any and all liability Knife River or their driver as a result of the Knife River Vehicle being driven inside property or curblines. I also accept full responsibility for any property damage or any equipment damage to Knife River which may occur beyond this point. I further agree to pay any towing or stand-by charges



Farmington Aggregate

Ticket No.: 59285344

Date : 12/13/2023 Time : 11:36:18AM

Vehicle : CAS18SS CASEDAY 7 AXLE
Customer : 622928 TELLURIC ENTERPRISES LLC
Order : MASTER 205 AUTO WRECKING, PORTLAND

P.O. : 9186
Product : 24991120 1 1/2"- 0 CRUSHED

22.67 Ton

TERMS: NET - CASH SALES PAYABLE UPON PICKUP OR DELIVERY. CHARGE SALES DUE AND PAYABLE BY THE 10TH OF MONTH FOLLOWING PURCHASE...

Received : _____

CUSTOMER COPY

Table with 4 columns: , Pounds, Tons, Metric. Rows: Gross, Tare, Net.

* P. T.

Table with 2 columns: , 385.39. Rows: Ordered, Remaining, Today: 118.46 Loads: 6

Weighmaster: Kimberly Beierle

As the owner or contractor for this job, I hereby save and hold harmless from any and all liability Knife River or their driver as a result of the Knife River Vehicle being driven inside property or curbsines...



Farmington Aggregate

Ticket No.: 59285344

Date : 12/13/2023 Time : 11:36:18AM

Vehicle : CAS18SS CASEDAY 7 AXLE
Customer : 622928 TELLURIC ENTERPRISES LLC
Order : MASTER 205 AUTO WRECKING, PORTLAND

P.O. : 9186
Product : 24991120 1 1/2"- 0 CRUSHED

22.67 Ton

TERMS: NET - CASH SALES PAYABLE UPON PICKUP OR DELIVERY. CHARGE SALES DUE AND PAYABLE BY THE 10TH OF MONTH FOLLOWING PURCHASE...

Received : _____

OFFICE COPY

Table with 4 columns: , Pounds, Tons, Metric. Rows: Gross, Tare, Net.

* P. T.

Table with 2 columns: , 385.39. Rows: Ordered, Remaining, Today: 118.46 Loads: 6

Weighmaster: Kimberly Beierle

As the owner or contractor for this job, I hereby save and hold harmless from any and all liability Knife River or their driver as a result of the Knife River Vehicle being driven inside property or curbsines...



Farmington Aggregate

Ticket No.: 59285344

Date : 12/13/2023 Time : 11:36:18AM

Vehicle : CAS18SS CASEDAY 7 AXLE
Customer : 622928 TELLURIC ENTERPRISES LLC
Order : MASTER 205 AUTO WRECKING, PORTLAND

P.O. : 9186
Product : 24991120 1 1/2"- 0 CRUSHED

22.67 Ton

TERMS: NET - CASH SALES PAYABLE UPON PICKUP OR DELIVERY. CHARGE SALES DUE AND PAYABLE BY THE 10TH OF MONTH FOLLOWING PURCHASE...

Received : _____

TANGENT COPY

Table with 4 columns: , Pounds, Tons, Metric. Rows: Gross, Tare, Net.

* P. T.

Table with 2 columns: , 385.39. Rows: Ordered, Remaining, Today: 118.46 Loads: 6

Weighmaster: Kimberly Beierle

As the owner or contractor for this job, I hereby save and hold harmless from any and all liability Knife River or their driver as a result of the Knife River Vehicle being driven inside property or curbsines...



Farmington Aggregate

Ticket No.: 59285100

Date : 12/13/2023 Time : 8:21:50AM

Vehicle : CAS18SS CASEDAY 7 AXLE
Customer : 622928 TELLURIC ENTERPRISES LLC
Order : MASTER 205 AUTO WRECKING, PORTLAND

P.O. : 9186
Product : 24991120 1 1/2"- 0 CRUSHED

22.67 Ton

TERMS: NET - CASH SALES PAYABLE UPON PICKUP OR DELIVERY. CHARGE SALES DUE AND PAYABLE BY THE 10TH OF MONTH FOLLOWING PURCHASE. A service charge of 1.5% per month, or a minimum of \$1.00, will be made on the unpaid balance at the end of the following month's billing cycle. This is an ANNUAL PERCENTAGE RATE OF 18%. PERSONAL NOTICE: We reserve the right to claim lien for all labor and material furnished on this job according to OREGON REVISED STATUTE 87.021

Received : _____

CUSTOMER COPY

Table with 4 columns: , Pounds, Tons, Metric. Rows: Gross (78560, 39.28, 35.63), Tare (33220*, 16.61*, 15.07*), Net (45340, 22.67, 20.57)

* P. T.

Table with 2 columns: , 385.39. Rows: Ordered, Remaining, Today: 59.98 Loads: 3

Weighmaster: Kimberly Beierle

As the owner or contractor for this job, I hereby save and hold harmless from any and all liability Knife River or their driver as a result of the Knife River Vehicle being driven inside property or curblines. I also accept full responsibility for any property damage or any equipment damage to Knife River which may occur beyond this point. I further agree to pay any towing or stand-by charges



Farmington Aggregate

Ticket No.: 59285100

Date : 12/13/2023 Time : 8:21:50AM

Vehicle : CAS18SS CASEDAY 7 AXLE
Customer : 622928 TELLURIC ENTERPRISES LLC
Order : MASTER 205 AUTO WRECKING, PORTLAND

P.O. : 9186
Product : 24991120 1 1/2"- 0 CRUSHED

22.67 Ton

TERMS: NET - CASH SALES PAYABLE UPON PICKUP OR DELIVERY. CHARGE SALES DUE AND PAYABLE BY THE 10TH OF MONTH FOLLOWING PURCHASE. A service charge of 1.5% per month, or a minimum of \$1.00, will be made on the unpaid balance at the end of the following month's billing cycle. This is an ANNUAL PERCENTAGE RATE OF 18%. PERSONAL NOTICE: We reserve the right to claim lien for all labor and material furnished on this job according to OREGON REVISED STATUTE 87.021

Received : _____

OFFICE COPY

Table with 4 columns: , Pounds, Tons, Metric. Rows: Gross (78560, 39.28, 35.63), Tare (33220*, 16.61*, 15.07*), Net (45340, 22.67, 20.57)

* P. T.

Table with 2 columns: , 385.39. Rows: Ordered, Remaining, Today: 59.98 Loads: 3

Weighmaster: Kimberly Beierle

As the owner or contractor for this job, I hereby save and hold harmless from any and all liability Knife River or their driver as a result of the Knife River Vehicle being driven inside property or curblines. I also accept full responsibility for any property damage or any equipment damage to Knife River which may occur beyond this point. I further agree to pay any towing or stand-by charges



Farmington Aggregate

Ticket No.: 59285100

Date : 12/13/2023 Time : 8:21:50AM

Vehicle : CAS18SS CASEDAY 7 AXLE
Customer : 622928 TELLURIC ENTERPRISES LLC
Order : MASTER 205 AUTO WRECKING, PORTLAND

P.O. : 9186
Product : 24991120 1 1/2"- 0 CRUSHED

22.67 Ton

TERMS: NET - CASH SALES PAYABLE UPON PICKUP OR DELIVERY. CHARGE SALES DUE AND PAYABLE BY THE 10TH OF MONTH FOLLOWING PURCHASE. A service charge of 1.5% per month, or a minimum of \$1.00, will be made on the unpaid balance at the end of the following month's billing cycle. This is an ANNUAL PERCENTAGE RATE OF 18%. PERSONAL NOTICE: We reserve the right to claim lien for all labor and material furnished on this job according to OREGON REVISED STATUTE 87.021

Received : _____

TANGENT COPY

Table with 4 columns: , Pounds, Tons, Metric. Rows: Gross (78560, 39.28, 35.63), Tare (33220*, 16.61*, 15.07*), Net (45340, 22.67, 20.57)

* P. T.

Table with 2 columns: , 385.39. Rows: Ordered, Remaining, Today: 59.98 Loads: 3

Weighmaster: Kimberly Beierle

As the owner or contractor for this job, I hereby save and hold harmless from any and all liability Knife River or their driver as a result of the Knife River Vehicle being driven inside property or curblines. I also accept full responsibility for any property damage or any equipment damage to Knife River which may occur beyond this point. I further agree to pay any towing or stand-by charges



Coffee Lake Quarry
11911 SW Waldo Way
Sherwood, OR 97140
FOR INFO PLEASE CALL
(503)-944-3570

Ticket No.: **14635867**

REPRINT

Date : 12/13/2023 Time : 12:03:55PM

Vehicle : CAS18SS CASEDAY 7 AXLE
Customer : 622928 TELLURIC ENTERPRISES LLC
Order : MASTER 5605 NE 405TH AVE PORTLAND

P.O. : 9186
Product : 24991120 1 1/2"- 0 CRUSHED

22.99 Ton

5605 NE 405TH AVE PORTLAND

TERMS: NET - CASH SALES PAYABLE UPON PICKUP OR DELIVERY. CHARGE SALES DUE AND PAYABLE BY THE 10TH OF MONTH FOLLOWING PURCHASE. A service charge of 1.5% per month, or a minimum of \$1.00, will be made on the unpaid balance at the end of the following month's billing cycle. This is an ANNUAL PERCENTAGE RATE OF 18%. PERSONAL NOTICE: We reserve the right to claim lien for all labor and material furnished on this job according to OREGON REVISED STATUTE 87.021

Received : _____

CUSTOMER COPY

	<u>Pounds</u>	<u>Tons</u>	<u>Metric</u>
Gross	79200	39.60	35.92
Tare	33220	16.61	15.07
Net	45980	22.99	20.86

Ordered	0.00	
Remaining		
Today:	22.99	Loads: 1

Weighmaster: Scott Atkinson

As the owner or contractor for this job, I hereby save and hold harmless from any and all liability Knife River or their driver as a result of the Knife River Vehicle being driven inside property or curblines. I also accept full responsibility for any property damage or any equipment damage to Knife River which may occur beyond this point. I further agree to pay any towing or stand-by charges



Coffee Lake Quarry
11911 SW Waldo Way
Sherwood, OR 97140
FOR INFO PLEASE CALL
(503)-944-3570

Ticket No.: **14635867**

REPRINT

Date : 12/13/2023 Time : 12:03:55PM

Vehicle : CAS18SS CASEDAY 7 AXLE
Customer : 622928 TELLURIC ENTERPRISES LLC
Order : MASTER 5605 NE 405TH AVE PORTLAND

P.O. : 9186
Product : 24991120 1 1/2"- 0 CRUSHED

22.99 Ton

5605 NE 405TH AVE PORTLAND

TERMS: NET - CASH SALES PAYABLE UPON PICKUP OR DELIVERY. CHARGE SALES DUE AND PAYABLE BY THE 10TH OF MONTH FOLLOWING PURCHASE. A service charge of 1.5% per month, or a minimum of \$1.00, will be made on the unpaid balance at the end of the following month's billing cycle. This is an ANNUAL PERCENTAGE RATE OF 18%. PERSONAL NOTICE: We reserve the right to claim lien for all labor and material furnished on this job according to OREGON REVISED STATUTE 87.021

Received : _____

OFFICE COPY

	<u>Pounds</u>	<u>Tons</u>	<u>Metric</u>
Gross	79200	39.60	35.92
Tare	33220	16.61	15.07
Net	45980	22.99	20.86

Ordered	0.00	
Remaining		
Today:	22.99	Loads: 1

Weighmaster: Scott Atkinson

As the owner or contractor for this job, I hereby save and hold harmless from any and all liability Knife River or their driver as a result of the Knife River Vehicle being driven inside property or curblines. I also accept full responsibility for any property damage or any equipment damage to Knife River which may occur beyond this point. I further agree to pay any towing or stand-by charges



Coffee Lake Quarry
11911 SW Waldo Way
Sherwood, OR 97140
FOR INFO PLEASE CALL
(503)-944-3570

Ticket No.: **14635867**

REPRINT

Date : 12/13/2023 Time : 12:03:55PM

Vehicle : CAS18SS CASEDAY 7 AXLE
Customer : 622928 TELLURIC ENTERPRISES LLC
Order : MASTER 5605 NE 405TH AVE PORTLAND

P.O. : 9186
Product : 24991120 1 1/2"- 0 CRUSHED

22.99 Ton

5605 NE 405TH AVE PORTLAND

TERMS: NET - CASH SALES PAYABLE UPON PICKUP OR DELIVERY. CHARGE SALES DUE AND PAYABLE BY THE 10TH OF MONTH FOLLOWING PURCHASE. A service charge of 1.5% per month, or a minimum of \$1.00, will be made on the unpaid balance at the end of the following month's billing cycle. This is an ANNUAL PERCENTAGE RATE OF 18%. PERSONAL NOTICE: We reserve the right to claim lien for all labor and material furnished on this job according to OREGON REVISED STATUTE 87.021

Received : _____

TANGENT COPY

	<u>Pounds</u>	<u>Tons</u>	<u>Metric</u>
Gross	79200	39.60	35.92
Tare	33220	16.61	15.07
Net	45980	22.99	20.86

Ordered	0.00	
Remaining		
Today:	22.99	Loads: 1

Weighmaster: Scott Atkinson

As the owner or contractor for this job, I hereby save and hold harmless from any and all liability Knife River or their driver as a result of the Knife River Vehicle being driven inside property or curblines. I also accept full responsibility for any property damage or any equipment damage to Knife River which may occur beyond this point. I further agree to pay any towing or stand-by charges



CALPORTLAND

535A FRONT AVE AGGREGA 5034 NW FRONT AVE
PORTLAND, OR 97210

12/22/2023 6:50:43

NO: 2648297

Copy



Customer: 1015435 SITE ONE LLC
Project: 46186 2023 PRICING
P.O.: Job Number.
Product: 8015 3/4 - 1/2 CRUSHED

	DELIVERY TOTALS	
	TODAY	PROJECT
LOAD	1	110
QTY	19.41	1,930.85

Delv To:
5034 NW FRONT AVE

Weighmaster.

SERVICE, SCALETRAX

PORTLAND

OR 97210

DATE	SOURCE	lbs	Tons	TNE	Gross
12/22/2023 6:50:39 A	Front Ave S	77,500	38.75	35.15	Gross
12/18/2023 6:43:58 A	Front Ave S	38,680	19.34	17.54	Tare
		38,820	19.41	17.61	Net

Driver Off

Hauler: 999 FOB
Truck: SO18SS SITE ONE CONVEYORS

	AMOUNT
PRODUCT	\$0.00
FREIGHT	\$0.00
ENV FEE	\$0.00
TAX	\$0.00
TOTAL	\$0.00

ISSUED BY

DATE

535A FRONT AVE AGGREGA 5034 NW FRONT AVE
 12/22/2023 10:54:27 PORTLAND, OR 97210



NO: 2648611

Copy

Customer: 1015436 SITE ONE LLC
 Project: 46186 2023 PRICING
 P.O.: Job Number:
 Product: 8007 1 1/2- 3/4 CRUSHED

DELIVERY TOTALS		
	TODAY	PROJECT
LOAD	1	119
QTY	19.41	2,192.15

Deliv To:
 5034 NW FRONT AVE
 PORTLAND OR 97210

Weighmaster: SERVICE, SCALETRAX

DATE	SOURCE	lbs	Tons	THE	
12/22/2023 10:54:25 A	Front Ave S	77,500	38.75	35.15	Gross
12/19/2023 6:43:58 A	Front Ave S	38,680	19.34	17.54	Tare
		38,820	19.41	17.61	Net

Driver Off

Hauler: 999 FOB
 Truck: SO18SS SITE ONE CONVEYORS

	AMOUNT
PRODUCT	\$0.00
FREIGHT	\$0.00
DRY FEE	\$0.00
TAX	\$0.00
TOTAL	\$0.00

SEC'D BY

DATE

Appendix H

Geotechnical Report



MAUL
FOSTER
ALONGI



December 19, 2023

Project No. 01723

Brooke Harmon, PE

Project Engineer

Maul Foster & Alongi, Inc.

109 East 13th Street

Vancouver, WA 98660

RE: GEOTECHNICAL CQA REPORT, 205 AUTO SALVAGE REMEDIAL ACTION, PORTLAND OREGON

Dear Ms. Harmon:

Terra-Geo, Inc. (Terrageo) has prepared this Construction Quality Assurance and Completion (CQA) report for MFA to document special inspection activities performed for the former Interstate 205 Auto Salvage Remedial Action Plan located at approximately 5605 NE 105th Ave, Portland, Oregon (see attached Figure 1). Terrageo provided laboratory testing and compaction testing CQA services for remedial action plan described in the following:

- MFA (2022) 205 AUTO SALVAGE REMEDIAL ACTION, PROJECT NUMBER M0106.30.001 TROUTDALE OREGON FOLLOWING SHEETS:
 - Sheet 2.0 EXISTING CONDITIONS
 - Sheet 3.0 GRADING AND EROSION CONTROL PLAN
 - Sheet 4.0 SITE RESTORATION PLAN

1.1 Project Scope

Reviewing the above it was noted that the maximum depth of contaminated soils is 2 feet. From a review of the volumes, it is understood that there will be two types of soils that will be excavated and placed on the site, with the approximate quantities of each as follows:

- Imported Soils: 155 CY
- Contaminated Soils: 155 CY

1.2 CQA Scope

For completion of the remedial action, Terrageo was onsite to monitor and document the following:

- i. Contractor conducted operations to minimize water in the excavations.
- ii. The water in the excavation was removed prior to backfill placement and compaction..
- iii. Fill materials was changed to be 1.5 inch minus rock. The materials were relatively dry when delivered and did not require moisture conditioning to achieve compaction.
- iv. Fill materials were be placed in continuous and approximately horizontal lifts at a thickness of not greater than 12 inches loose.
- v. Terrageo noted the Fill materials were placed to comply with COP Chapter 24.70 Clearing, Grading And Retaining walls, specifically Section 24.70.080 Fills Subsection D:

“D. Compaction of fill. All fills shall be compacted to a minimum relative dry density of 90 percent as determined in accordance with ASTM Standard D-1557-78. Field density verification shall be determined in accordance with ASTM Standard D-1556-82 or equivalent.....”

1.3 General CQA Activities

Terrageo performed the following CQA activities:

- Met with Garrick Kalmeta of MFA to develop a CQA plan and discussed site safety and access.
- Collected Soil samples for Modified Proctor ASTM D1557 determinations along with Particle Size Distributions (Sieve Tests) ASTM D6913
- Monitored and documented construction activities in relation to compliance with technical specifications as well as industry-standard construction methods.
- Prepared daily field reports to document inspections of Contractors' work and inspector work completed. for compliance with contract documents, monitored and documented corrective actions taken by the Contractor, as necessary, and provided photo-documentation of work in progress.
- Performed field density tests for compaction and moisture compliance.
- Compiled the following CQA documentation:
 - Laboratory Soils testing (attached to report)
 - Density Results (attached to report)
 - Daily field reports (attached to report)

1.4 Schedule

Terrageo provided onsite CQA services on December 13 and 14, 2023.

1.5 Field Nuclear Densimeter Testing

Field nuclear densimeter testing for the project was provided by Terrageo. The following elements were tested, and all were found to pass:

- Density and Moisture of compacted soils located in the excavated soil area.

The compaction reports are attached and all are shown to pass.

1.6 Construction CQA and Certification

With this letter, Terrageo certifies that the backfill constructed to the date of the tests were completed under the observation of Terrageo and inspected work and test results conformed to the requirements of the plans and specifications, and COP and industry-standard construction methods.

Terra-Geo is pleased to provide this update and trust that it meets your current requirements. If you have any questions or require additional information, please contact the undersigned.

Sincerely,

TERRA-GEO, INC



Brian M. Willman, PhD, PE, GE
Principal Engineer


Attachments: Figure 1
Laboratory Soil Test
Density Testing Results
Daily Field Reports





Figure 1 - Nuclear Densometer Locations

I-205 Auto Salvage

Legend

 Test -

Test - 1 

 Test - 2



100 ft

Google Earth

Image © 2023 Airbus



Soil Compaction (Proctor) Testing Data Sheet

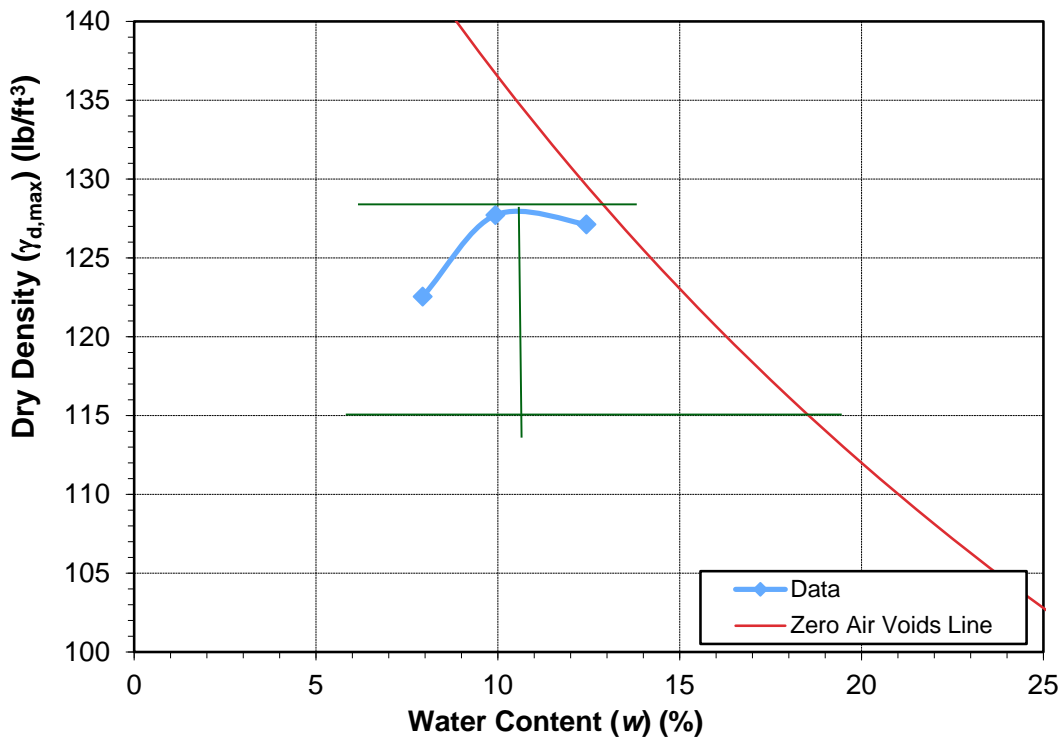
ASTM D698 & D1557

Project Name: I-205 Auto Salvage Tested By: SMW Date: 12/15/2023
 Location: 1.5 Inch Import Checked By: BMW Date: 12/18/2023
 Sample Source: Grab From Stockpile Test No.: 01723-01
 Sample Type: Composite of All Buckets

USCS Soil Classification: Poorly Graded Gravel with Sand G_s : 2.8

Test Standard: ASTM D1557 Mold Dia (in): 6
 Test Method: Method C Mold Vol. (ft³): 0.075

TRIAL NUMBER	1	2	3	4
Mass of Soil & Mold (M_t) (lb):	35.97	36.61	36.77	
Mass of Mold (M_{mold}) (lb):	26.05	26.08	26.05	
Mass of Soil (M_s) (lb):	9.92	10.53	10.72	
Wet Density (γ_{wet}) (lb/ft ³):	132.3	140.4	142.9	
Can Number	G2	TR15	TR29	
Mass of Empty Can (g):	14.09	16.10	16.50	
Mass Can & Soil (Wet) (g):	103.49	393.20	613.40	
Mass Can & Soil (Dry) (g):	96.92	359.13	547.38	
Mass of Soil (g):	82.83	343.03	530.88	
Mass of Water (g):	6.57	34.07	66.02	
Water Content w (%):	7.93	9.93	12.44	
Dry Density (γ_{dry}) (lb/ft ³):	122.5	127.7	127.1	



UNCORRECTED
 $\gamma_{d,max}$ (lb/ft³): 128.3
 OMC (%): 11

CORRECTED
 $\gamma_{d,max}$ (lb/ft³): 135.1
 OMC (%): 9.3

% retained on 3/4 Sieve
 22.52% @ Absorption of
 3.4%



18740 SW Boones Ferry Road
Tualatin, Oregon, 97062
Tel: (503) 729-9195
Fax: (503) 607-1825

ON SITE: 1:15 pm OFF SITE: 2:45 pm

DATE: 12/13/2023	JOB NO: 01723
PROJECT: I-205 Auto Salvage – Remedial Action	
LOCATION: Portland, Oregon	
CONTRACTOR: Telluric Enterprises LLC.	CLIENT: MFA
WEATHER: 55 degrees, mostly cloudy	
CQA Monitor: Brian Willman Report No.: 205 Auto Salvage 12-13-23	

Restorcap Progress and Activity

- Met with MFA Site PM Garrick Kalmeta of MFA onsite
- Excavation of contaminated soils had been completed and was being backfilled.
- Standing water was causing issues and was being drained to allow for compaction and testing

Restorcap Crew working On-Site:

- Excavator, steel drum roller dump trucks

CQA Activities and Testing:

- Collected samples import 1.5 inch minus rock for laboratory testing.

Relevant Discussions with Contractor:

- Met with Garrick Kalmeta regarding compaction efforts and pumping approach. Concurred with approach to drain water and developed compaction testing timeline.

PHOTOS:



IMAGE 1: Water management completed prior to compaction efforts.



IMAGE 2: Track Walking and bucket compaction of import.



18740 SW Boones Ferry Road
 Tualatin, Oregon, 97062
 Tel: (503) 729-9195
 Fax: (503) 607-1825

ON SITE: 1:00 pm OFF SITE: 2:30 pm

DATE: 12/14/2023	JOB NO: 01723
PROJECT: I-205 Auto Salvage – Remedial Action	
LOCATION: Portland, Oregon	
CONTRACTOR: Telluric Enterprises LLC.	CLIENT: MFA
WEATHER: 51 degrees, cloudy	
CQA Monitor: Brian Willman Report No.: 205 Auto Salvage 12-14-23	

Restorcap Progress and Activity

- Met with MFA Site PM Garrick Kalmeta of MFA onsite
- Excavation of contaminated soils was being backfilled.
- Standing water was removed and compaction was underway

Restorcap Crew working On-Site:

- Excavator, steel drum roller dump trucks

CQA Activities and Testing:

- Took Two Nuclear Densometer Tests.

Relevant Discussions with Contractor:

- Met with Garrick Kalmeta regarding compaction efforts and pumping approach. Concurred with approach track walk then proofroll. Observed compacted import.

PHOTOS:



IMAGE 1: Import after bucket compaction and trackwalking, but prior to proofroll.



IMAGE 2: Import after bucket compaction and trackwalking, but prior to proofroll.



IMAGE 3: Nuclear Densometer Test Locations