



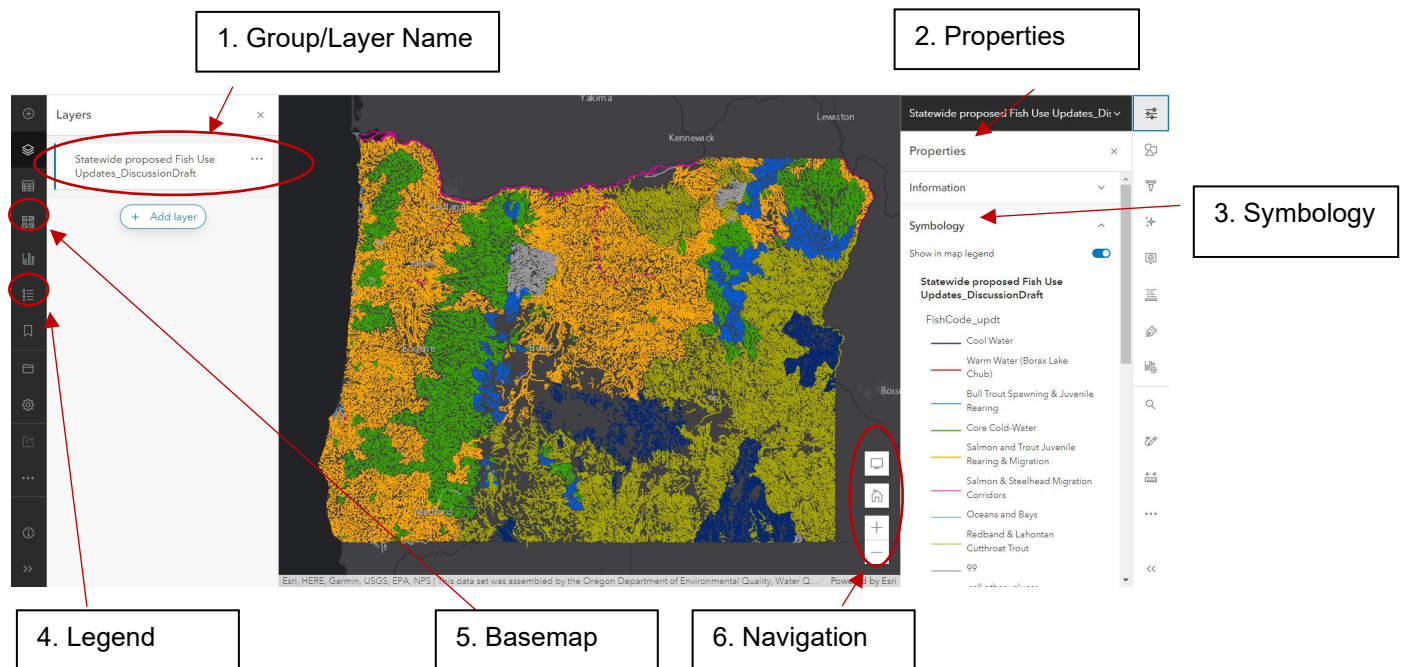
State of Oregon Department of Environmental Quality

Aquatic Life Use Updates Map Instructions

May 2023

Note: The web map is large. Depending on the speed of your internet connection it may be slow to load when zoomed out to the statewide extent. Load times can will often speed up if you zoom into an area of interest within the map.

How to navigate and control the interactive web map



1). **Group/Layer Name**

The name of the layer. Click on this name to display the properties on the left-hand side of the map. Click the ellipse (...) icon to display sub-layers within a group. Click the "eyeball" icon to toggle visibility of a layer on/off.

2). **Properties**

Lists information about the map including the feature layer, Symbology, and Appearance.

3). **Symbology**

Contains the key for line coloration of information and categories in the layer. In this example, dark blue lines indicate Cool Water Species Use.

4). **Legend**

The legend contains the symbology for displaying information in each layer. This is the same as the symbology section although it contains the symbology for all the layers together in one place.

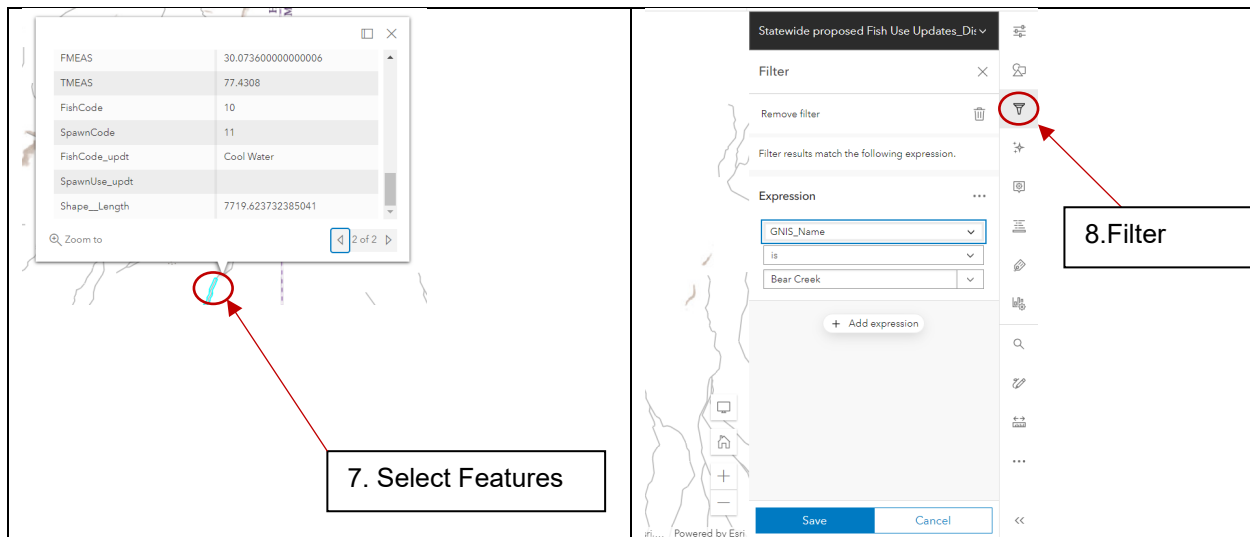
5). **Basemap**

The basemap is the background map behind the layers. You can change the basemap if you need a better option to display specific features. For example, terrain basemap's can include water features and elevation gradients.

6). **Navigation**- The home button will return the map to the default, statewide extent. The plus and minus buttons allow zooming in and out on specific areas.

7) **Select Features**- If you wish to see the specific attributes of a waterbody, you can select a waterbody with the cursor and it will display the attributes for that line in a pop-up table. Scroll up and down to see all attributes. Please see list of variables and attribute codes below to see what the numeric codes mean. The example below (left) shows a selected waterbody and the pop up table.

8) **Filter**- To search for a specific name of a waterbody, create an expression where the GNIS_Name is selected, then select the name of the waterbody. The example below (right) filters the map for streams named 'Bear Creek'.



Key of Relevant Variables and Attribute Codes

Variable	GIS Variable Name	Description
Water Type	WaterType_code	Salinity-based water type designation.
Water Body	WaterBody_code	Functional or morphologic water body type designation.
Current year-round Temperature Fish Use Subcategories	FishCode	Aquatic life use subcategories affecting application of the temperature standards. See OAR 340-041 Figures 101A to Figures 340A
Current Seasonal Salmon and Steelhead Spawning Dates (Temperature)	SpawnCode	Date ranges where seasonal salmon & steelhead spawning criteria are in effect for temperature.
Year-Round dissolved oxygen use subcategories	DO_code	Undesignated year-round DO criteria as currently implemented
Assumed seasonal salmonid criteria spawning dates (dissolved oxygen)	DO_SpawnCode	Undesignated seasonal salmonid spawning criteria as currently implemented
Waterbody Name	GNIS_Name	Name of waterbody from the Geographic Names Information System (GNIS) if applicable and available. Not all waterbodies have a name in GNIS.
Year-round Temperature Fish Code Update	FishCode_updt	Proposed use amendments to the FishCode variable.
Salmon & Steelhead Spawning Use Update	SpawnUse_updt	Proposed use amendments to the SpawnCode variable.
Year-round Dissolved Oxygen Aquatic Life use Update	DO_code_updt	Proposed use designations for dissolved oxygen.

Variable	GIS Variable Name	Description
Seasonal Dissolved Oxygen Salmonid Use Update	DO_Spawn_code_updt	Proposed use designations for salmonid spawning (dissolved oxygen).

Variable: WaterType_code	Water Types
01	Estuarine
02	Freshwater
03	Saltwater

WaterBody_code	Water Body Types
01	Estuary
02	River/Stream
03	Ocean
04	Bay
05	Coastal Water
06	Reservoir
07	Pond
08	Lake
09	Cascade lakes above 3,000 feet altitude
10	Cascade lakes above 5,000 feet altitude
11	Saline lakes
12	Highly Alkaline & Saline Lakes
13	Natural lakes that thermally stratify
14	Designated Scenic Waterway
15	Wetland
16	Beach
99	N/A

Variables: FishCode; FishCode_updt	Temperature Use Designation	Criterion (7dADM- °C)
10	Fish Use - Cool Water Species	narrative
11	Fish Use - Borax Lake Chub	narrative
12	Fish Use -Bull Trout Spawning and Juvenile Rearing	12°C
15	Fish Use - Salmon and Steelhead Spawning	13°C
16	Fish Use - Core Cold Water Habitat	16°C
18	Fish Use - Salmon and Trout Rearing and Migration	18°C
20	Fish Use - Salmon and Steelhead Migration Corridors	20°C
21	Fish Use – Special Cool Water Narrative (28°C)	28°C
88	Fish Use - Redband or Lahontan Cutthroat Trout	20°C
22	Oceans and Bays Narrative	narrative
99	No Salmonid Use/Out of State/Tribal Lands	N/A
0	Not Designated	

Variables: DO_code; DO_code_updt	Dissolved Oxygen Use Designations
01	Estuarine
02	Cold Water
03	Cool Water
04	Warm Water
05	Marine
99	No Jurisdiction/Out of State/Tribal Lands
11, 0	Not designated

Variables: SpawnCode; SpawnCode_updt; DO_SpawnCode DO_Spawn_code_updt	Spawning Date Ranges (Temperature and Dissolved Oxygen)
41	August 15 – March 31
40	November 1 – April 30
39	October 15 – April 30
38	October 1 – April 30
37	September 15 – April 30
36	August 15 – April 30
35	April 1 – July 15
34	September 1 – April 15
33	January 1 – July 15
32	August 15 – May 30
31	September 1 – April 30
30	October 15 - March 31
29	August 15 - May 15
28	August 15 - June 15
27	August 1 - June 15
25	January 1 - June 15
24	January 1 - May 15
23	November 1 - June 15
22	November 1 - May 1
21	November 1 - May 15
20	October 15 - June 15
19	October 15 - May 15
18	October 1 - June 15
17	October 1 - May 15
16	October 23 - April 15
15	September 15 - June 15
14	September 15 - May 15
13	September 1 - June 15
12	September 1 - May 15
11	X (No Spawning)
99	No Jurisdiction/Out of State/Tribal Lands
0	Not Designated

Variables: SpawnCode; SpawnCode_updt; DO_SpawnCode DO_Spawn_code_updt	Spawning Date Ranges (Temperature and Dissolved Oxygen)
41	August 15 – March 31
40	November 1 – April 30
39	October 15 – April 30
38	October 1 – April 30
37	September 15 – April 30
36	August 15 – April 30
35	April 1 – July 15
34	September 1 – April 15
33	January 1 – July 15
32	August 15 – May 30
31	September 1 – April 30
30	October 15 - March 31
29	August 15 - May 15
28	August 15 - June 15
27	August 1 - June 15
25	January 1 - June 15
24	January 1 - May 15
23	November 1 - June 15
22	November 1 - May 1
21	November 1 - May 15
20	October 15 - June 15
19	October 15 - May 15
18	October 1 - June 15
17	October 1 - May 15
16	October 23 - April 15

15	September 15 - June 15
14	September 15 - May 15
13	September 1 - June 15
12	September 1 - May 15
11	X (No Spawning)
99	No Jurisdiction/Out of State/Tribal Lands
0	Not Designated

DISCLAIMER

The maps and information provided by Oregon DEQ's *Interactive Mapping Viewer* is for informational purposes and may not have been prepared for, or be suitable for legal, engineering or surveying purposes. This information or data is provided with the understanding that conclusions drawn from such information are the responsibility of the user. The base maps in the background are provided and maintained by ESRI. Oregon DEQ cannot guarantee the quality, content, accuracy, completeness, or currency of the information transmitted by this viewer, and provides such information without expressed or implied warranties, subject to the terms and conditions stated in this Disclaimer. While we make every attempt to provide accurate, complete, and up-to-date information, Oregon DEQ shall not be held responsible for any discrepancies contained herein. **Use of the Interactive Mapping Viewer constitutes acceptance of all terms and conditions in this Disclaimer.**

Translation or other formats

[Español](#) | [한국어](#) | [繁體中文](#) | [Русский](#) | [Tiếng Việt](#) | [العربية](#)

800-452-4011 | TTY: 711 | deqinfo@deq.oregon.gov

Non-discrimination statement

DEQ does not discriminate on the basis of race, color, national origin, disability, age or sex in administration of its programs or activities. Visit DEQ's [Civil Rights and Environmental Justice page](#).