

2013 ANNUAL MONITORING AND MAINTENANCE REPORT

Ross Island Sand & Gravel Company
Portland, Oregon



August 2013



August 30, 2013

Oregon Department of Environmental Quality
Northwest Region
2020 SW Fourth Avenue, Suite 400
Portland, Oregon 97201

Attention: Jennifer Sutter

Subject: Annual Monitoring and Maintenance Report
Ross Island Sand & Gravel Company
4315 SE McLoughlin Blvd.
Portland, Oregon 97202

Ross Island Sand & Gravel (RISG) is pleased to present this Annual Monitoring and Maintenance Report for the period of July 1, 2012 to June 30, 2013 for the RISG facility on Ross and Hardtack Islands in Portland, Oregon. Monitoring and maintenance of the remedial action areas at the site were completed as required in the Consent Order (Department of Environmental Quality [DEQ] No. LQVC-NWR-11-01). Attachment B of the Consent Order included the Long Term Maintenance and Monitoring Contingency Plan. RISG performed the second year of monitoring and maintenance, and determined the engineering controls are in place and secured as constructed. RISG will continue to conduct maintenance and monitoring in accordance with the plan.

We appreciate your continued assistance on this project. Please contact us if you have any questions.

Sincerely,

Ross Island Sand & Gravel Company

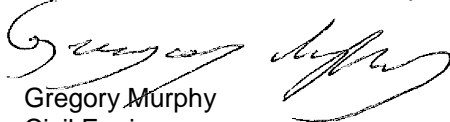

Gregory Murphy
Civil Engineer

TABLE OF CONTENTS		Page
1	INTRODUCTION	1
2	BACKGROUND	1
2.1	Site Location and Description	1
2.2	Site History	1
2.3	Previous Investigations and Studies	2
3	PURPOSE AND OBJECTIVES	3
4	REMEDIAL ACTION AREAS	3
5	LONG-TERM MONITORING AND MAINTENANCE	4
5.1	General.....	4
5.2	Upland.....	5
5.2.1	Remedial Action Area B	5
5.2.2	Remedial Action Areas A2-1 and A2-3	5
5.2.3	Remedial Action Area A2-2	6
5.3	Lagoon	6
5.3.1	Sediment Cap Thickness.....	6
5.3.2	Slope Stability	7
5.3.3	Area E - pH Monitoring.....	7
6	SUMMARY	8
	REFERENCES.....	9

TABLES

- Table 1 pH Summary Table
- Table 2 pH Background
- Table 3 pH Comparison Chart

FIGURES

- Figure 1 Vicinity Map
- Figure 2 Site Plan
- Figure 3 2001-2013 Sediment Cap Analysis
- Figure 4 2012-2013 Sediment Cap Analysis
- Figure 5 Cross Section Locations
- Figure 6 Cross Section A-A'
- Figure 7 Cross Section B-B'
- Figure 8 Cross Section C-C'
- Figure 9 Cross Section D-D'
- Figure 10 Cross Section E-E'
- Figure 11 pH Sampling
- Figure 12 2012-2013 Zone 1 pH Sampling Comparison
- Figure 13 Background pH Sampling Locations

APPENDICES

- Appendix A - Monitoring Forms and Data Sheets
- Appendix B - Project Site Photographs

ACRONYMS

BMP	Best Management Practice
CAD	Confined Aquatic Disposal
DEQ	Department of Environmental Quality
DSL	Department of State Lands
FS	Feasibility Studies
H:V	Horizontal to Vertical
LTMMCP	Long Term Maintenance and Monitoring Contingency Plan
NOAA	National Oceanic and Atmospheric Association
PAH	Polynuclear Aromatic Hydrocarbon
PCB	Polychlorinated Biphenyl
RI/RA	Remedial Investigation/Risk Assessment
RID	Ross Island Datum
RISG	Ross Island Sand & Gravel
ROD	Record of Decision
TBT	Tributyltin

1 INTRODUCTION

Ross Island Sand & Gravel (RISG) concluded annual maintenance and monitoring of the remedial action areas as defined in the Long Term Maintenance and Monitoring and Contingency Plan (LTMMCP) (GeoDesign, 2011b) for the RISG Plant and Lagoon at Ross and Hardtack Islands. This report summarizes data collected from upland monitoring of the remedial action areas on scheduled dates and after major rain events; an updated bathymetric survey to check the slopes and status of sediment caps; and pH testing in the four historically elevated pH zones.

Figure 1 shows the site relative to surrounding features. Figure 2 describes the plan of the site.

2 BACKGROUND

2.1 SITE LOCATION AND DESCRIPTION

The remedial action areas are located at River Mile 15 on the Willamette River in Portland, OR. The main river channel flows along the west side of Ross Island, while Holgate Slough flows along the east side of Hardtack Island.

The remedial action area is split into two areas, upland and lagoon. The upland areas consist of the RISG plant operation and fill area. The plant operation contains an aggregate processing plant, office, shop, storage buildings, and aggregate stockpiles. The fill area contains vegetation consisting of grass, cottonwood trees, and shrubs, bordered by the shoreline. The lagoon was formed back in the 1920's when a dike was built between the southern points of Hardtack and Ross Islands. The gauge height of the lagoon varies during the year from -1.0 feet to +15.0 feet RID.

2.2 SITE HISTORY

RISG supplies the Portland metro area with aggregate used for concrete, asphalt, road base, and fill. Mining and processing of aggregates in the Ross Island Lagoon began in the 1920's and concluded in 2001. RISG currently imports raw aggregates by barge from a mine in Klickitat County, WA and will continue processing aggregate on Hardtack Island for the foreseeable future.

In 1979, a Conditional Use Permit was issued by the City of Portland, establishing the need for RISG to replace the upland and in-water material that had been previously mined. For the next 20 years, RISG would import fill material per the guidelines of the Conditional Use Permit. Fill material has been accepted from various sources, and available documentation shows it predominantly originated from:

- Non-commercial grade materials from on-site aggregate processing
- Material from various other local maintenance dredging projects
- Material from US Army Corps of Engineers Bonneville Locks project

With a modern scientific understanding of the river, surrounding habitat and facilities the 1979 Reclamation Plan was updated in 2002. The new strategies in the updated plan (Landau, 2002a) determined the need to use clean fill to achieve the reclamation goals and to accelerate the creation of a habitat of biodiversity. The updated plan estimated that placement of an additional 4 to 4.6 million cubic yards of clean fill material over a ten year period would achieve habitat creation goals described in the 2002 plan. Fill placed on-site, both upland and in-water, from 1979

to 2002 under the old plan, is documented in the Remedial Investigation/Risk Assessment (RI/RA) report (Landau, 2002b).

Under the 2002 Reclamation Plan, over 4.6 million cubic yards of clean fill has been placed in the reclamation and remedial action areas as noted in Annual Monitoring Reports (GeoDesign, 2005a, 2005b, 2006b, 2007a, 2008, 2009, 2010b, 2011a; 2012; Ross Island, 2013) submitted to the Department of State Lands (DSL) in accordance with the DSL Removal Fill Permit No. 26.

RISG will continue the placement of clean fill until the objectives in the 2002 Reclamation Plan have been achieved. Fill volumes and sources will be documented in the DSL Annual Monitoring Reports.

2.3 PREVIOUS INVESTIGATIONS AND STUDIES

Since 1998 several investigations were conducted at the site and the results are documented in the RI/RA report (Landau, 2002b) and the Feasibility Study (FS) (GeoDesign, 2005c), which are on file at the Department of Environmental Quality's (DEQ's) Northwest Regional office. The following is a listing of the pertinent investigations:

- 1998 investigation of the breach Confined Aquatic Disposal (CAD) cell
- 1999 baseline characterization investigation of "clear zones" in the lagoon and upland areas
- 1999 Turbidity study of Willamette River and Ross Island Lagoon
- 1999 and 2000 biological assessment of lagoon and upland areas
- 1999 and 2000 Investigation of dredged Port of Portland material in CAD cells
- 1999 and 2001 Phase 1 and Phase 2 RI/RAs

The above mentioned investigations assessed:

- The CAD cells' effectiveness in containing contaminants from the aquatic environment
- Contaminants present in fill material and surface sediment in the southern region of the lagoon, particularly near the breached CAD Cell No. 5
- Contamination of the upland areas

These investigations reported the presence of following contaminants on-site:

- Metals
- Polynuclear Aromatic Hydrocarbons (PAHs)
- Polychlorinated Biphenyls (PCBs)
- Pesticides
- Petroleum hydrocarbons
- Tributyltin (TBT)

Recognized probable sources of the contamination are the Port of Portland shipyards at Swan Island and Terminal 4, naturally occurring contaminants in the sediment placed on-site, and on-site operations and maintenance of RISG processing facility. Elevated pH levels were observed in the southern portion of the Lagoon, thought to result from historical disposal of concrete truck cleanout residues.

In August 2005, GeoDesign executed a FS (GeoDesign, 2005c) for the site. This study recognized areas requiring remedial action and different remedial action options to mitigate the contaminants. The identified remedial action areas were divided into five upland areas and three in-water areas. The upland areas are identified as A1, A2 (divided into three sub-areas), and C. The three in-water areas are identified as D, E, and F. In addition, DEQ's Record of Decision (ROD) (DEQ, 2005) established the requirements for remedial action founded on the results of past investigations and the FS. Figure 2 shows the locations of each remedial action area. Section 4.0 of this report defines the designated remedies for each area.

The last of the design reports and addendums for the upland remedial areas (GeoDesign, 2007b, 2007d) and in-water remedial areas (GeoDesign, 2007c, 2007e, and 2007f) were completed, submitted, and approved by the DEQ in 2007. Upland remedial action was completed in 2007, except for Sub-Area A2-2 as described in the Construction Completion Report for Remedial Action Areas A1, A2, and C (GeoDesign, 2007g). The remedial action for Sub-Area A2-2 started in fall 2007 and concluded in early 2008. In-water remedial action has been ongoing since the 2002 Reclamation Plan was implemented, and sediment cap was largely completed in December 2009. In-water fill in Areas D, E, and F continued in 2010, and completion of the in-water remedial action areas, as well as Sub-Area A2-2, are recorded in the Construction Completion Report for Remedial Action Areas A2-2, D, E, and F (GeoDesign, 2010a) and Addendum Nos. 1 and 2 (GeoDesign, 2010c and 2010d).

3 PURPOSE AND OBJECTIVES

The purpose of this report is to document the past year's monitoring and maintenance activities for each remedial action area.

In monitoring, we achieve the objective of making sure the remedial actions are functioning and remain effective in achieving our remedial action goals and to provide maintenance as needed. If maintenance is required, it will be performed in the identified area to restore the effective remedial action. Monitoring requirements will undergo a periodic review as required.

4 REMEDIAL ACTION AREAS

The following table describes the remedial action areas, the contamination in each area, and the remedy that is monitored and maintained. Locations for each remedial action area are shown on Figure 2.

AREA	CONTAMINANTS	ACTION REQUIRED
A1	Arsenic and zinc on surface	Excavated soil and contained in Area B, covered with clean fill
A2-1	PAHs along access road	Drainage berms and erosion Best Management Practices (BMPs) to prevent erosion
A2-2	PAHs along dike between settling pond and lagoon	Slope stabilization with ecology blocks and clean fill to prevent erosion
A2-3	PAHs along gravel road	BMPs to control erosion into lagoon
B	Former settling pond with TBT soil from CAD cell #5 breach and arsenic and zinc soil from Area A1	Capped with 3 feet of clean fill
C	Groundwater contained benzo(a)pyrene, manganese, and elevated pH	Monitoring confirmed no unacceptable risk
D	TBT, PCBs, and PAHs from CAD cell #5 breach	Capped with 3 feet of clean fill
E	Elevated pH in southern lagoon	Capped with 3 feet of clean fill
F	CAD cell Nos. 1 through 5	Capped and stabilized slopes adjacent to CAD cells

Monitoring is not required for Remedial Action Areas A1 and C.

5 LONG-TERM MONITORING AND MAINTENANCE

5.1 GENERAL

From July 1, 2012 to June 30, 2013, RISG performed and completed the monitoring and maintenance of remedial action areas as defined in the LTMMCP. The upland monitoring areas and requirements are the following:

- Annual monitoring of BMPs in Sub-Areas A2-1 and A2-3
- Annual monitoring of stabilized slopes in Sub-Area A2-2
- Annual monitoring of capped Area B

In addition to the annual monitoring, Sub-Areas A2-1, A2-2, and A2-3 require monitoring after a rain event of 0.5 inch or greater in a 24 hour period.

In-water monitoring areas have the following requirements:

- Annual bathymetric surveys to evaluate slope stability and cap thickness in Areas D, E, and F
- Annual pH monitoring in Zones 1 through 4 in Area E

Finally, the LTMMCP requires additional monitoring after any of the following significant events:

- A flood of 18 gauge feet or greater on Ross Island Datum (RID) (National Oceanic and Atmospheric Association [NOAA], 2011a) that covers any upland area and requires assessment once water subsides

- A flood of 24 gauge feet or greater on RID (NOAA, 2011b) will require assessment of in-water and upland remedial action areas once water subsides
- Rainfall great than 3.4 inches in a 24 hour period (COP, 2008) will require monitoring of BMPs and stabilized slopes
- A seismic event of 6.0 or greater on the Richter scale will require assessment of sediment caps, soil caps, and slopes adjacent to lagoon and CAD cells

None of the above mentioned significant events occurred during this period.

The following sections document monitoring that has occurred during this period.

5.2 UPLAND

Monitoring of the upland remedial action areas was completed in general accordance with the LTMMCP. The reporting is described below, with monitoring forms included in Appendix A and site photographs in Appendix B.

5.2.1 REMEDIAL ACTION AREA B

Remedial Action Area B is the site of a former settling pond that is now capped with clean fill material. RISG performed the annual monitoring event on April 26, 2013. The soil cap was inspected for displacement of cap material. The soil cap was in good condition with no signs of settling, holes, animal intrusions, erosion, or ponding. The vegetation on the soil cap was inspected for any signs of dead spots and stress. Vegetation appeared to be in good shape. Based on the inspection, the soil cap did not require any maintenance or contingency measures at this time.

5.2.2 REMEDIAL ACTION AREAS A2-1 AND A2-3

Remedial Action Area A2-1 is an area covered with gravel, and contains berms and trenches to mitigate surface runoff into vegetation to the east and biofilter bags to the west. Remedial Action Area A2-3 is covered with gravel and includes a trench to lessen runoff.

The annual monitoring event for Remedial Action Area Sub-Area A2-1 was conducted by RISG on April 26, 2013. The monitoring included field observation for erosion or damage to improved areas, and the condition of biofilter bags, vegetation, and ecology blocks. The monitoring event resulted in the observed BMPs and improved areas to be in excellent condition and therefore no maintenance or contingency measures were deemed necessary at this time.

On April 26, 2013, RISG conducted the annual monitoring of Remedial Action Area A2-3. Inspection of the gravel roadway and filter trench indicated the BPM's were helping to reduce and/or prevent erosion. Additional action is not required based on the visual observations.

The LTMMCP calls for monitoring of the before mentioned areas following a rain event of 0.5 inches or greater within a 24 hour period. RISG uses the rain gauge at the Multnomah County Building at 501 SE Hawthorne Blvd., Portland, OR, located 1.8 miles north from Ross Island, as listed on the U.S. Geological Survey site. During the period July 1, 2012 to June 30, 2013, the rain gauge exceeded 0.5 inches 26 times. Rain gauge monitoring data is included in Appendix A, and photographs are in Appendix B. RISG performed the required monitoring and the documents show the BMPs were achieving their primary objectives with the following exceptions.

On October 19, 2012, rainfall data showed 0.54 inch of rain in 24 hours. The rain event occurred during late evening hours on Friday. Because the office was closed during the weekend, no RISG employees were present to monitor and collect data.

On October 27, 2012, a rain event occurred with 0.62 inch of precipitation in 24 hours. Although there was no monitoring for this date, the next day was a rain event with 0.85 inch of rain in 24 hours. RISG completed monitoring for the October 28, 2012 rain event and did not observe sediment runoff during this inspection. Based on the October 28, 2012 data, the two consecutive rain events have been adequately documented and the BMPs were performing as designed.

November 17 was the first day of four consecutive rain events. Precipitation totals for each day were 0.69 inch, 0.54 inch, 2.10 inches, and 0.60 inch, respectively. RISG performed monitoring for the last three days of period. No signs of erosion were observed for November 19, 2013, which was the greatest amount of these sequential rain events.

On November 23, 2012, precipitation data indicated 1.36 inches of rain in 24 hours. This date is the Friday after Thanksgiving and the facilities were closed to observe the four day holiday weekend. Therefore, RISG did not have staff on site to complete the monitoring.

Maintenance of Remedial Action Area Sub-Area A2-1 incorporated intermittent contouring of the existing crushed stone surface. Routine maintenance of Remedial Action Area Sub-Area A2-1 included placement of additional gravel on the roadway to prevent rutting and periodic reshaping of the roadway after activities in this area.

5.2.3 REMEDIAL ACTION AREA A2-2

Monitoring of Remedial Action Area A2-2 occurred annually and following a rain event of 0.5 inch or greater in a 24 hour period. Examinations are made for signs of erosion such as sloughing and minor rills. On January 7, 2013, river levels were low enough to see the ecology blocks used to stabilize the slope, with photos in Appendix B. Observations show the slope with no signs of erosion, and thus stable. As recorded in the monitoring events, the blocks were under water for most of the year, thus making it impossible to observe the blocks after rain events.

Based on the visual observation, no routine maintenance was necessary during this period.

5.3 LAGOON

The success of the lagoon remedial action elements depends on the limiting and prevention of aquatic receptor contact with contaminated sediments. This has been achieved with the construction of a 3-foot-thick sediment cap and stabilization of the slopes adjacent to the CAD cells.

Annual monitoring for Remedial Action Areas D, E, and F are below.

5.3.1 SEDIMENT CAP THICKNESS

According to the LTMMCP, annual monitoring will utilize bathymetric surveys to evaluate the sediment cap thickness. The annual survey data will be compared to the 2001 bathymetric survey and the 2012 survey data.

On May 23, 2013, Northwest Hydro Inc. completed the annual bathymetric survey. A comparison in elevation changes between 2001 and 2013 was conducted and shown on Figure 3. The analysis illustrates a gain in elevation within the remedial action area of greater than 3 feet, with an exception along the south shoreline of Remedial Action Area Sub-Area A2-2. In our opinion, the elevation in this area is inaccurate due to a vessel anchored in that local area that interfered with the collection of survey data.

Figure 4 shows the bathymetric comparisons between the 2012 and 2013 surveys. Shown is a majority gain of 0 to 2 feet across the remedial action area. An elevation gain of greater than 2

feet is illustrated near the western half of pH zone 1. The greatest change in elevation is within a submerged valley that helped to reinforce the buttressing slopes near CAD cells 2 and 3. Scattered spots of loss of 0.5 feet or less and less frequent areas of loss of 0.5 or greater are the result of settlement due to the ebb and flow of the tides in the lagoon and soil placement activity that changed localized areas of the underwater landscape. Based on a comparison of the 2001 to 2013 surveys, RISG was able to correct the loss in sediment cap that was shown in the 2012 bathymetric survey. Based on the bathymetric comparisons between the 2001 pre-remedial action survey and the 2013 survey, the sediment cap does not require maintenance at this time.

5.3.2 SLOPE STABILITY

Cross sections created from the 2013 bathymetric survey are shown in Figures 6 through 10. The slopes in the vicinity of CAD cells vary from 2H:1V to Zero Slope as seen in Cross Section Figures 6 through 10. The final slopes will be 3H:1V per previous reports, and slopes less than 2H:1V will be maintained. Figures 7 and 8 illustrate an increase in elevation of the toe of the buttressing slopes adjacent to CAD cells 2 and 3, stabilizing the slopes and lessening the steepness, and thus reducing the risk of a slope failure near the CAD cells. Figures 9 and 10 also show an elevation increase at the slope toe, lessening the steepness and reducing the possibility of erosion. Additional monitoring is not needed at this time, and annual monitoring of the slopes will continue per the LTMMCP. Events that require additional monitoring, 6.0 earthquake, or 24.0 feet datum flood, did not occur.

5.3.3 AREA E - PH MONITORING

Ross Island Sand & Gravel, in cooperation with EES Environmental Consulting, completed the second annual monitoring in the designated areas with historical elevated pH. Monitoring occurred on April 29, 2013 and April 30, 2013 in Zones 1 through 4 as required in the LTMMCP. An illustration of the pH monitoring is shown in Figures 11 through 13 and summarized as follows.

In Zone 1, seven sediment samples were collected using a Ponar grab sampler, resulting in pH readings ranging from 8.05 to 8.67.

In Zone 2, three sediment samples were collected using a Ponar grab sampler, one using the Henry Probe, and three sample pits were excavated upland in Zone 2. The sample pits resulted in pH readings ranging from 7.80 to 8.08. The sample pits were established due to the fine nature of the clay beneath the surface clogging the pores on the Henry Probe. The sample pits were dug to depths of 4" and 12" below the surface which allowed ground water to pool in these depressions so pH could be measured. The Ponar samples resulted in pH readings ranging from 7.74 to 8.21. The Henry Probe resulted in a pH reading of 7.51 at a depth of 26" where the Henry Probe met refusal.

The areal extent of Zone 3 is upland and above the water line, therefore no pH data was collected.

In Zone 4, five sediment samples were collected using a Ponar grab sampler, resulting in pH readings ranging from 7.32 to 7.61.

From our annual monitoring, Zone 1 was the only area with elevated pH readings above the 8.5 threshold. The slightly elevated readings were along the western edge of Zone 1, and appear consistent with pH readings in previous monitoring events. However, pH levels have dropped compared to last year's monitoring. In this same region of Zone 1 an elevated level of 9.83 was recorded in 2012, by comparison, a reading of 8.67 for the 2013 annual monitoring that is only slightly above the threshold.

During the monitoring event, surface water pH measurements were obtained from the northern lagoon area and lagoon entrance, with the pH readings ranging from 7.9 to 8.84. Additional surface water pH testing for ambient conditions outside the south lagoon area was conducted at the end of the second day of testing. The pH measurements in Holgate Slough and the main Willamette River channel varied between 7.5 and 8.26.

The results of the pH monitoring event are summarized in Tables 1 and 2.

6 SUMMARY

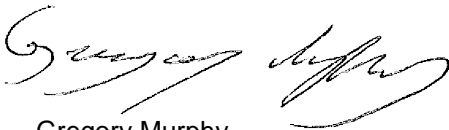
Ross Island Sand & Gravel has completed its annual monitoring and maintenance report as required by DEQ Consent Order No. LQVC-NWR-11-01. The observation for this second year has shown remedial action areas meeting their goals and corrected previous issues that had arisen from the previous report.

The pH levels in Zone 1 were still above the 8.5 upper threshold limits in a few spots. However, the pH levels are down from last year's Ponar sample tests. Overall pH monitoring results indicate that RISG is successfully continuing work to achieve the goal of reducing pH in this area to at or below 8.5. Other areas that previously had elevated pH readings, Zones 2-4, are now under the threshold.

RISG will continue to monitor and provide maintenance in accordance with the LTMMCP. The next annual report will be submitted in August 2014. If significant events trigger maintenance requirements or additional actions in the coming year, or if problems are encountered, RISG will notify DEQ to coordinate appropriate response.

We appreciate your assistance to RISG. If you have questions please call.

Respectfully,



Gregory Murphy
Civil Engineer



Craig Jacobs
Operations Manager

REFERENCES

COP, 2008, *Stormwater Management Manual Revision 4*, City of Portland, Aug. 1.

DEQ, 2005. Record of Decision; Remedial Action for Ross Island Sand & Gravel; Portland, OR, Dec., 2005.

GeoDesign, 2005a. Revised 2003 Annual Monitoring Report; Ross Island Sand & Gravel; Portland, OR, Oct. 14.

GeoDesign, 2005b. Revised 2004 Annual Monitoring Report; Ross Island Sand & Gravel; Portland, OR, Oct. 14.

GeoDesign, 2005c. Feasibility Study; Ross Island Sand & Gravel; Portland, OR, Aug. 2, 2005.

GeoDesign 2006b. 2005 Annual Monitoring Report; Ross Island Sand & Gravel; Portland, OR, Sept. 25.

GeoDesign 2007a. 2006 Annual Monitoring Report; Ross Island Sand & Gravel; Portland, OR, Feb. 15.

GeoDesign 2007b. Final Design Report; Remedial Action Areas A1, A2, and C; Ross Island Sand & Gravel; Portland, OR, Feb. 28.

GeoDesign 2007c. Final Design Report; Remedial Action Areas D, E, and F; Ross Island Sand & Gravel; Portland, OR, May 25.

GeoDesign 2007d. Addendum; Final Design Report; Remedial Action Area A1; Ross Island Sand & Gravel; Portland, OR, Jun. 4.

GeoDesign, 2007e. Addendum 1; Final Design Report; Remedial Action Areas D, E, and F; Ross Island Sand & Gravel; Portland, OR, Aug. 10.

GeoDesign, 2007f. Addendum 2; Final Design Report; Remedial Action Areas D, E, and F; Ross Island Sand & Gravel; Portland, OR, Oct. 15.

GeoDesign, 2007g. Construction Completion Report; Remedial Action Areas A1, A2, and C; Ross Island Sand & Gravel; Portland, OR, Oct. 15.

GeoDesign, 2008. 2007 Annual Monitoring Report; Ross Island Sand & Gravel; Portland, OR, Feb. 15.

GeoDesign, 2009. 2008 Annual Monitoring Report; Ross Island Sand & Gravel; Portland, OR, Feb. 16.

GeoDesign, 2010a. Construction Completion Report; Remedial Action Upland Area A2-2 and In-Water Areas D, E, and F; Ross Island Sand & Gravel; Portland, OR, Jan. 29.

GeoDesign, 2010b. 2009 Annual Monitoring Report; Ross Island Sand & Gravel; Portland, OR, Feb. 15.

GeoDesign, 2010c. Addendum 1; Construction Completion Report; Remedial Action Upland Area A2-2 and In-Water Areas D, E, and F; Ross Island Sand & Gravel; Portland, OR, Jul. 23.

GeoDesign, 2010d. Addendum 2; Construction Completion Report; Remedial Action Upland Area A2-2 and In-Water Areas D, E, and F; Ross Island Sand & Gravel, Portland, OR, Dec. 6.

GeoDesign, 2011a. 2010 Annual Monitoring Report; Ross Island Sand & Gravel; Portland, OR, February 15.

GeoDesign, 2011b. Long-Term Monitoring, Maintenance, and Contingency Plan; Ross Island Sand & Gravel, Portland, OR, April 29.

GeoDesign, 2012a. 2011 Annual Monitoring Report; Ross Island Sand & Gravel; Portland, OR; May 21.

GeoDesign, 2012b. Annual Monitoring and Maintenance Report; July 30.

Landau, 2002a. Ross Island Reclamation Plan; Ross Island Sand & Gravel; Portland, OR, Sept. 30.

Landau, 2002b. Remedial Investigation/Risk Assessment; Ross Island Sand & Gravel; Portland, OR, Oct. 21.

NOAA, 2011a. <http://water.weather.gov>, Advanced Hydrologic Prediction Service, Morrison Bridge Gauge, Flood Stage.

NOAA, 2011b. <http://water.weather.gov>, Advanced Hydrologic Prediction Service, Morrison Bridge Gauge, Moderate Flood Stage.

Ross Island, 2013. 2012 Annual Monitoring Report; Ross Island Sand & Gravel; Portland, OR, Feb. 28.

USGS. <http://or.water.usgs.gov>, City of Portland HYDRA Rainfall Network, Multnomah Rain Gage, 501 SE. Hawthorne Blvd.

USGS. <http://nwis.waterdata.usgs.gov>, 14211720 Willamette River at Portland, OR, Morrison Bridge Gauge.

Tables

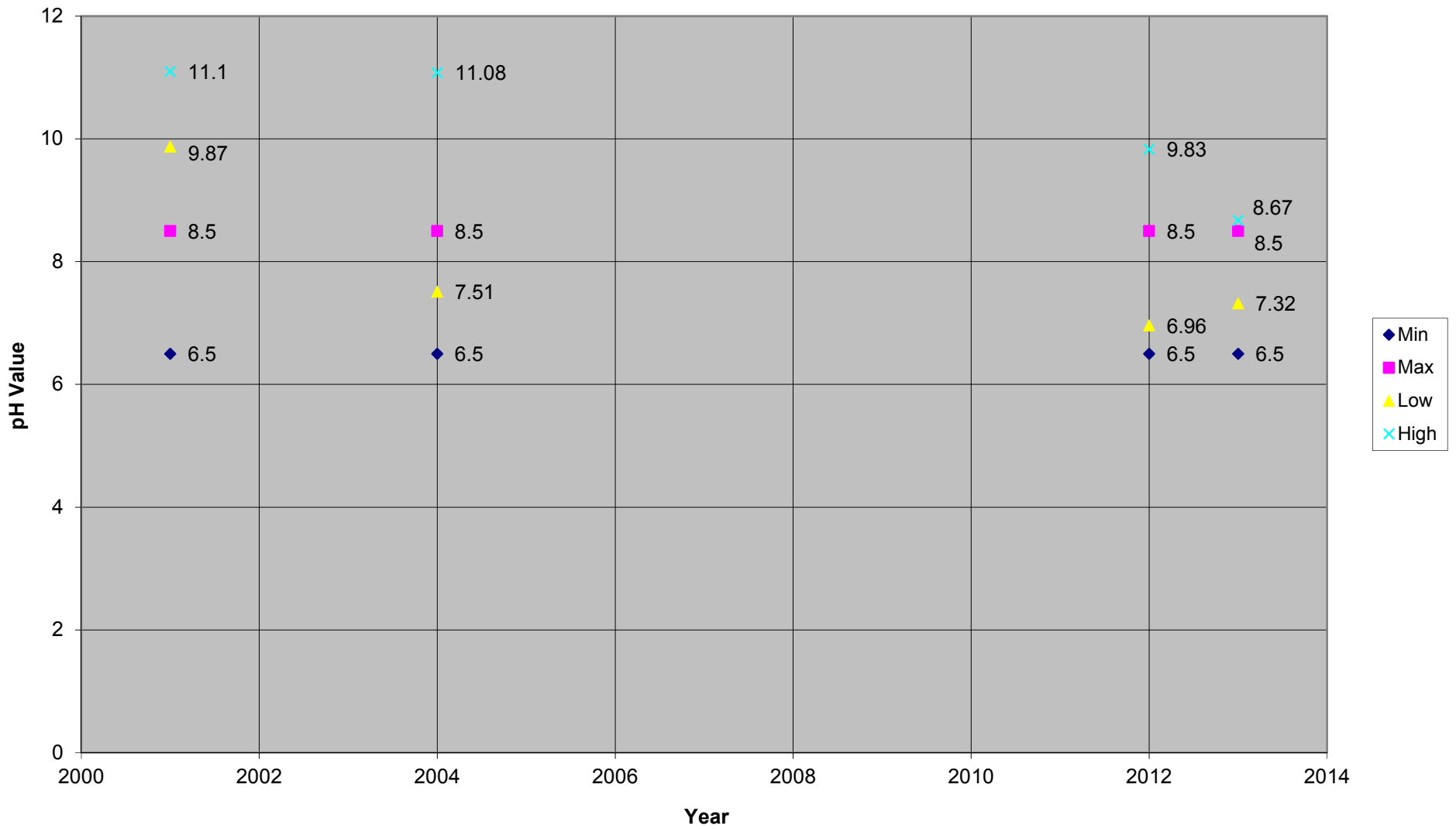
Table 1
Ross Island Sand and Gravel Company
 pH Summary Table
 April 2013

Zone	Sample Identification	Date	Time	Sampling Method	Location		Lagoon Depth (feet)	Stage Feet (USGS)	Depth Below Surface (feet)	Sample Gauge Elevation (feet)	pH	Background pH
					State Plane							
					Northing	Easting						
2	105	29-Apr	1103	Ponar	669139	7647795	1.9	7.23	0-0.5	5.33	8.21	8.7
2	106	29-Apr	1120	Ponar	669163	7647681	6.6	7.20	0-0.5	0.60	7.74	8.8
2	107	29-Apr	1129	Ponar	669138	7647627	1.6	7.16	0-0.5	5.56	8.03	8.9
2	H-1-12	29-Apr	1208	Test Pit	669128	7647625	-	7.05	1.0	6.05	7.80	-
2	H-1-4	29-Apr	1223	Test Pit	669128	7647625	-	6.98	0.3	6.68	8.08	-
2	H-2-4	29-Apr	1231	Test Pit	669111	7647745	-	6.94	0.3	6.64	7.98	-
2	H-2-26	29-Apr	1240	Henry	669111	7647745	-	6.94	2.2	4.74	7.51	-
1	108	29-Apr	1440	Ponar	669749	7648211	10.5	6.40	0-0.5	-4.10	8.67	-
1	109	29-Apr	1456	Ponar	669714	7648284	7.8	6.36	0-0.5	-1.44	8.62	9.1
1	110	30-Apr	903	Ponar	669646	7648265	7.9	7.05	0-0.5	-0.85	8.38	9.0
1	111	30-Apr	917	Ponar	669706	7648329	5.0	7.11	0-0.5	2.11	8.09	8.8
1	112	30-Apr	927	Ponar	669652	7648340	3.5	7.11	0-0.5	3.61	8.05	8.8
1	113	30-Apr	945	Ponar	669599	7648203	11.5	7.14	0-0.5	-4.36	8.56	8.8
1	114	30-Apr	950	Ponar	669654	7648189	11.1	7.14	0-0.5	-3.96	8.66	8.7
4	115	30-Apr	1007	Ponar	670568	7646692	22.6	7.13	0-0.5	-15.47	7.41	8.6
4	116	30-Apr	1021	Ponar	670623	7646568	22.1	7.09	0-0.5	-15.01	7.37	7.6
4	117	30-Apr	1033	Ponar	670791	7646585	21.2	7.04	0-0.5	-14.16	7.32	8.1
4	118	30-Apr	1039	Ponar	670782	7646699	23.3	7.04	0-0.5	-16.26	7.48	8.4
4	119	30-Apr	1054	Ponar	670698	7646619	21.4	7.0	0-0.5	-14.40	7.61	8.7

Table 2
Ross Island Sand and Gravel Company
 pH Background
 April 2013

Location	Sample Identification	Date	Time	Location		pH Surface	pH 8 feet
				State Plane			
				Northing	Easting		
N. Lagoon	A-1	30-Apr	1213	671367	7647904	7.90	8.34
N. Lagoon	A-2	30-Apr	1217	672987	7647387	8.74	8.75
Lagoon Entrance	A-3	30-Apr	1220	672214	7648585	8.80	8.84
Holgate Slough	A-4	30-Apr	1225	668933	7649150	8.26	8.02
S. of Island	A-5	30-Apr	1230	667164	7647291	7.67	7.67
Willamette Channel	A-6	30-Apr	1237	669815	7645780	7.50	7.52
Willamette Channel	A-7	30-Apr	1241	672362	7646005	7.58	7.54

Table 3
Ross Island Sand and Gravel Company
pH Comparison Chart



Figures

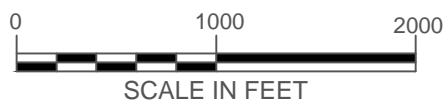


Imagery Date: 8/15/2012
© 2013 Google

Annual Monitoring & Maintenance Report
Ross Island Sand & Gravel Co.

FIGURE 1
Ross Island Location

Prepared by: Ross Island Sand & Gravel Co.
Portland, Oregon
July 2013





LEGEND

REMEDIAL ACTION AREAS

- | | | | |
|---|--------|---|----------|
|  | AREA A |  | AREA D/E |
|  | AREA B |  | AREA F |
|  | AREA C | | |



Annual Monitoring & Maintenance Report
Ross Island Sand & Gravel Co.

FIGURE 2
Ross Island Overview

Prepared by: Ross Island Sand & Gravel Co.
Portland, Oregon
July 2013



LEGEND:

- INDICATES GREATER THAN 3 FEET OF FILL PLACED BETWEEN 2001 AND 2013
- INDICATES BETWEEN 0 AND 3 FEET OF FILL PLACED BETWEEN 2001 AND 2013
- INDICATES BETWEEN 0 AND 0.5 FEET OF MATERIAL LOSS BETWEEN 2001 AND 2013
- INDICATES GREATER THAN 0.5 FEET OF MATERIAL LOSS BETWEEN 2001 AND 2013

NOTES:

1. THIS SUBSURFACE PROFILE IS GENERALIZED FROM DRAWINGS PROVIDED BY LANDAU ASSOCIATES, INC. AND GEODESOGN, INC.. SURVEY DATA FROM MINISTER-GLAESER SURVEYING, INC., (3D)I, LLC, AND NORTHWEST HYDRO, INC.
2. ELEVATIONS ARE IN ROSS ISLAND DATUM.

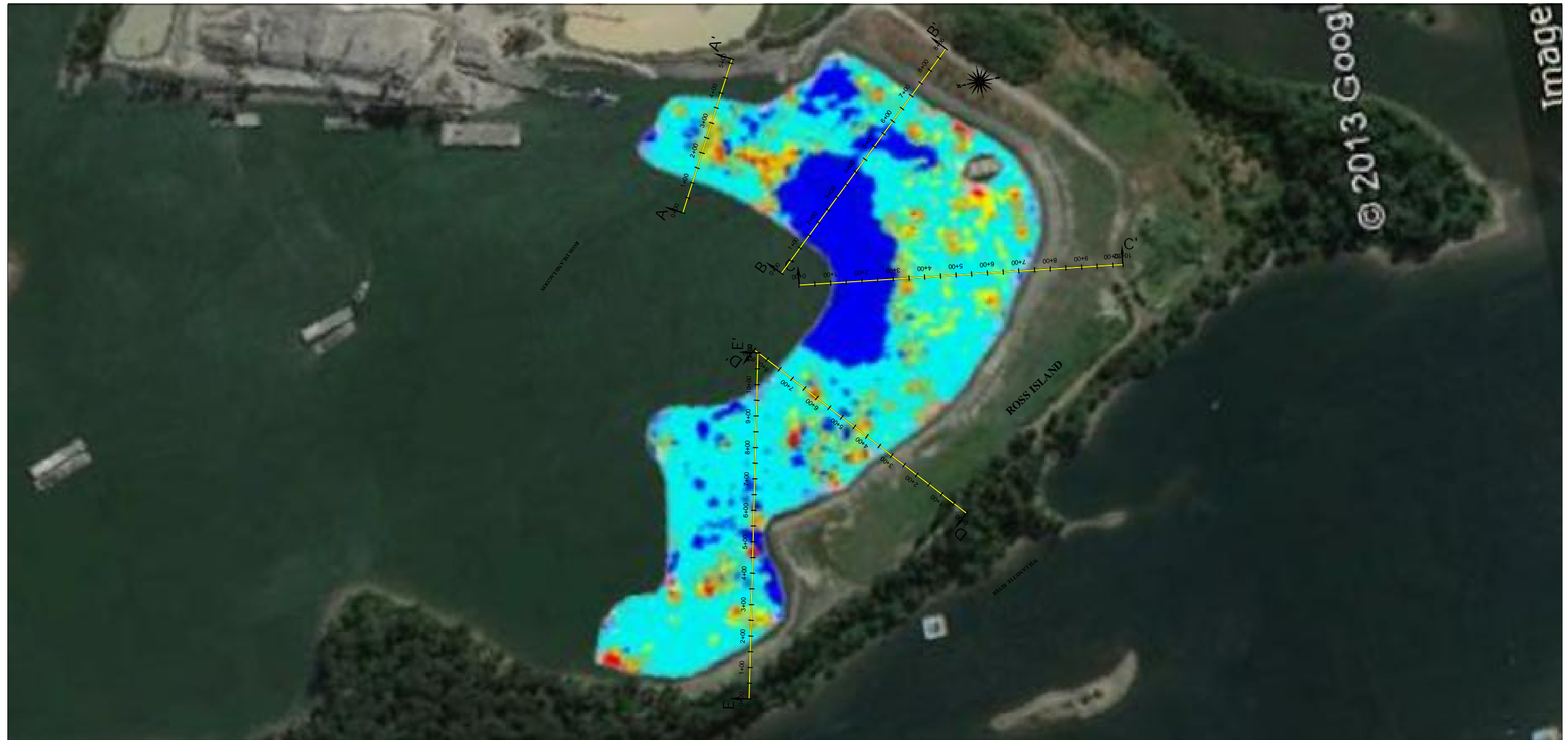
2013 Annual Monitoring and Maintenance Report

Ross Island Sand & Gravel Co.

FIGURE 3
2013 vs. 2001 Surface Comparison

Prepared By: Ross Island Sand & Gravel Co.
Portland, Oregon

Date: July 2013



LEGEND:

- INDICATES GREATER THAN 2 FEET OF FILL PLACED BETWEEN 2012 AND 2013
- INDICATES BETWEEN 0 AND 2 FEET OF FILL PLACED BETWEEN 2012 AND 2013
- INDICATES BETWEEN 0 AND 0.5 FEET OF MATERIAL LOSS BETWEEN 2012 AND 2013
- INDICATES GREATER THAN 0.5 FEET OF MATERIAL LOSS BETWEEN 2012 AND 2013

NOTES:

1. THIS SUBSURFACE PROFILE IS GENERALIZED FROM DRAWINGS PROVIDED BY LANDAU ASSOCIATES, INC. AND GEODESOGN, INC.. SURVEY DATA FROM MINISTER-GLAESER SURVEYING, INC., (3D)I, LLC, AND NORTHWEST HYDRO, INC.
2. ELEVATIONS ARE IN ROSS ISLAND DATUM.

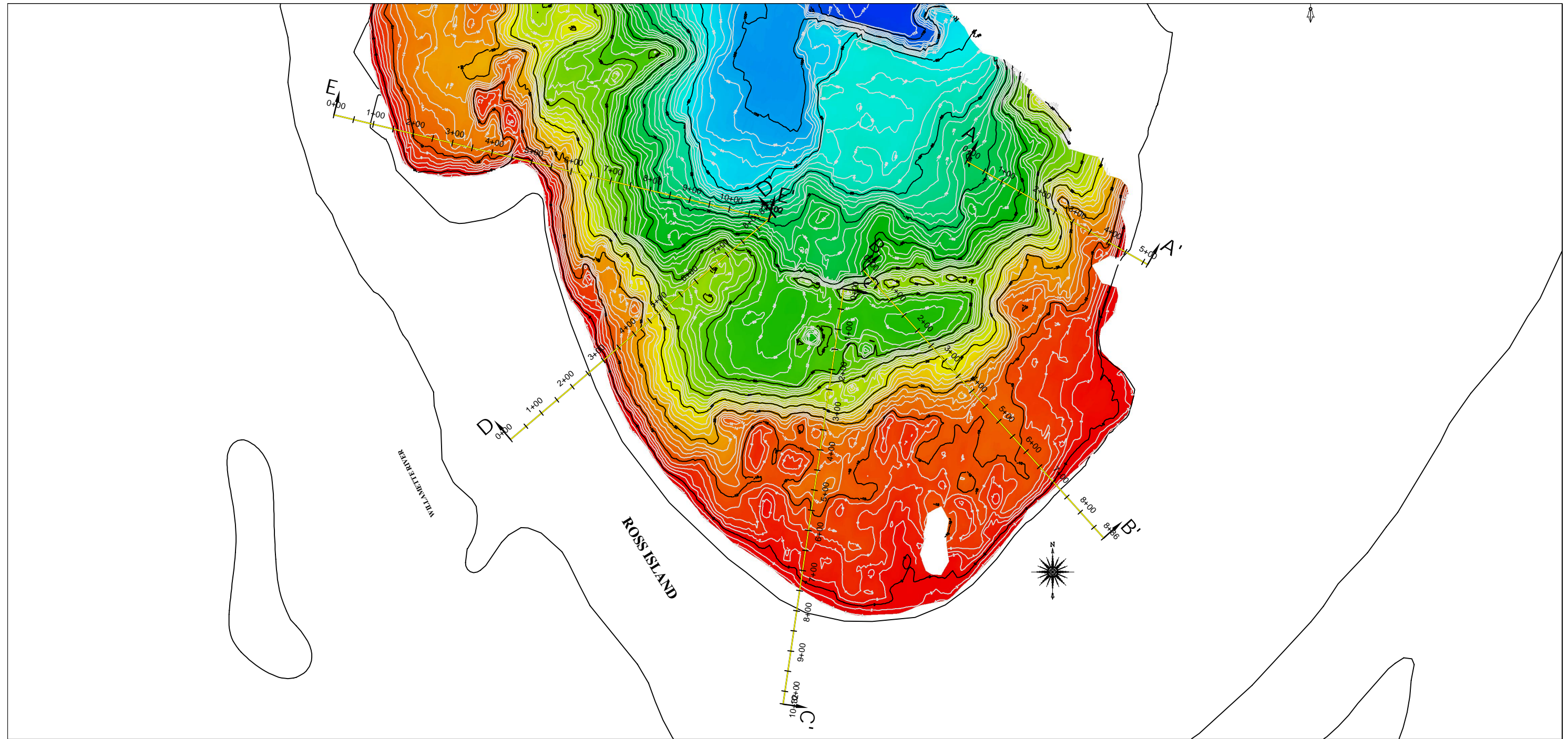
2013 Annual Monitoring and Maintenance Report

Ross Island Sand & Gravel Co.

FIGURE 4
2013 vs. 2012 Surface Comparison

Prepared By: Ross Island Sand & Gravel Co.
Portland, Oregon

Date: July 2013



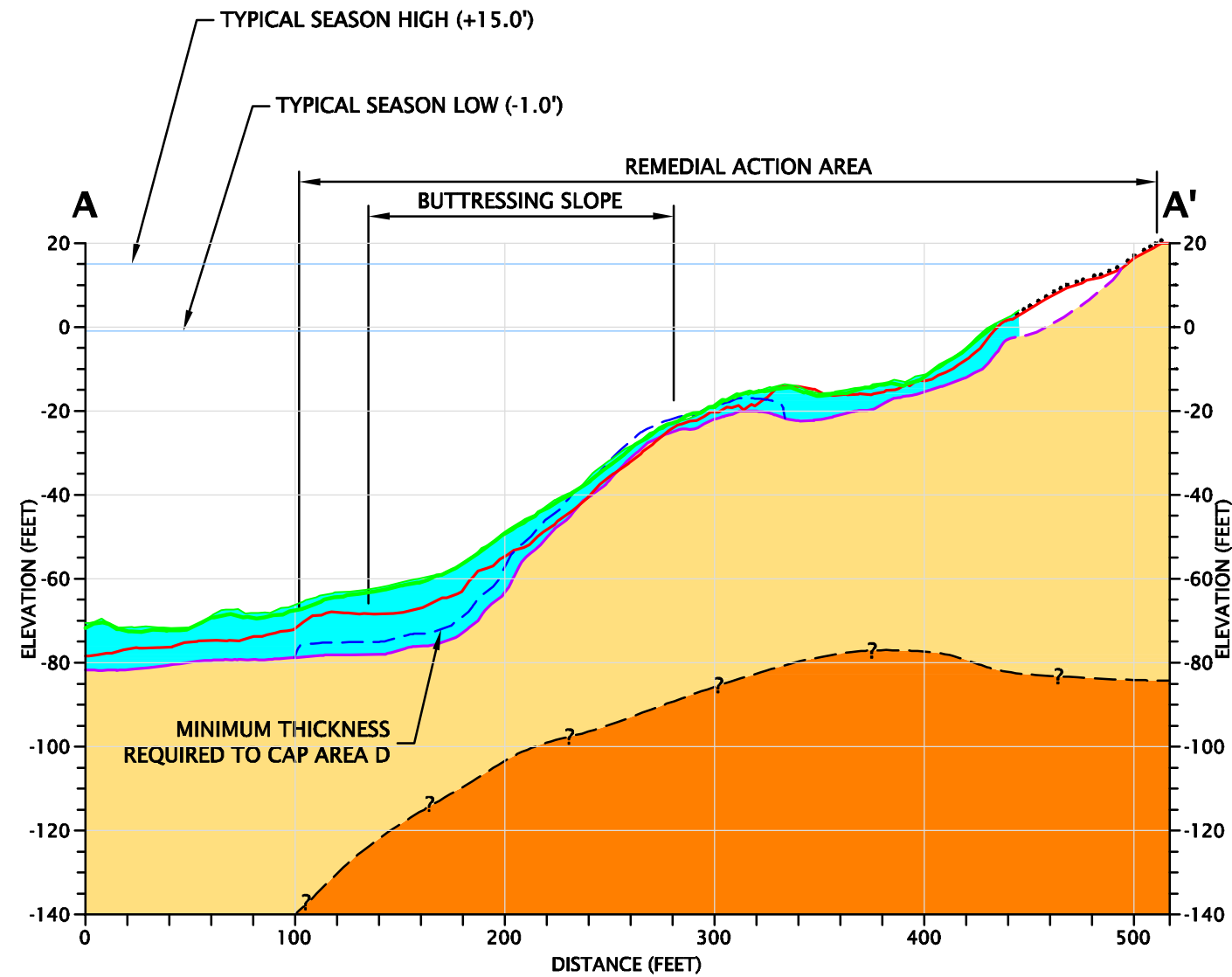
NOTES:

1. THIS SUBSURFACE PROFILE IS GENERALIZED FROM DRAWINGS PROVIDED BY LANDAU ASSOCIATES, INC. AND GEODESOGN, INC.. SURVEY DATA FROM MINISTER-GLAESER SURVEYING, INC., (3D)I, LLC, AND NORTHWEST HYDRO, INC.
2. ELEVATIONS ARE IN ROSS ISLAND DATUM.

2013 Annual Monitoring and
Maintenance Report
Ross Island Sand & Gravel Co.

FIGURE 5
2013 Cross Section Locations

Prepared By: Ross Island Sand & Gravel Co.
Portland, Oregon
Date: July 2013

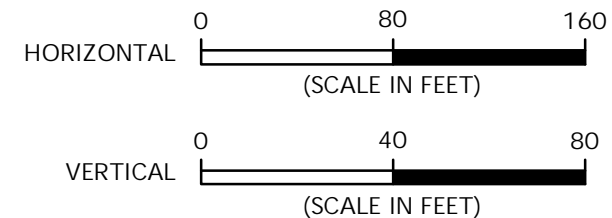


LEGEND:

- CONCEPTUAL RECLAMATION FILL SURFACE
- REMEDIAL/RECLAMATION FILL
- FINE SAND WITH SILT (FILL)
- EXISTING SURFACE AS SURVEYED MAY 2013
- EXISTING SURFACE AS SURVEYED DECEMBER 2009
- INFERRED SURFACE DECEMBER 2009
- EXISTING SURFACE AS SURVEYED NOVEMBER 2001
- INFERRED SURFACE NOVEMBER 2001

NOTES:

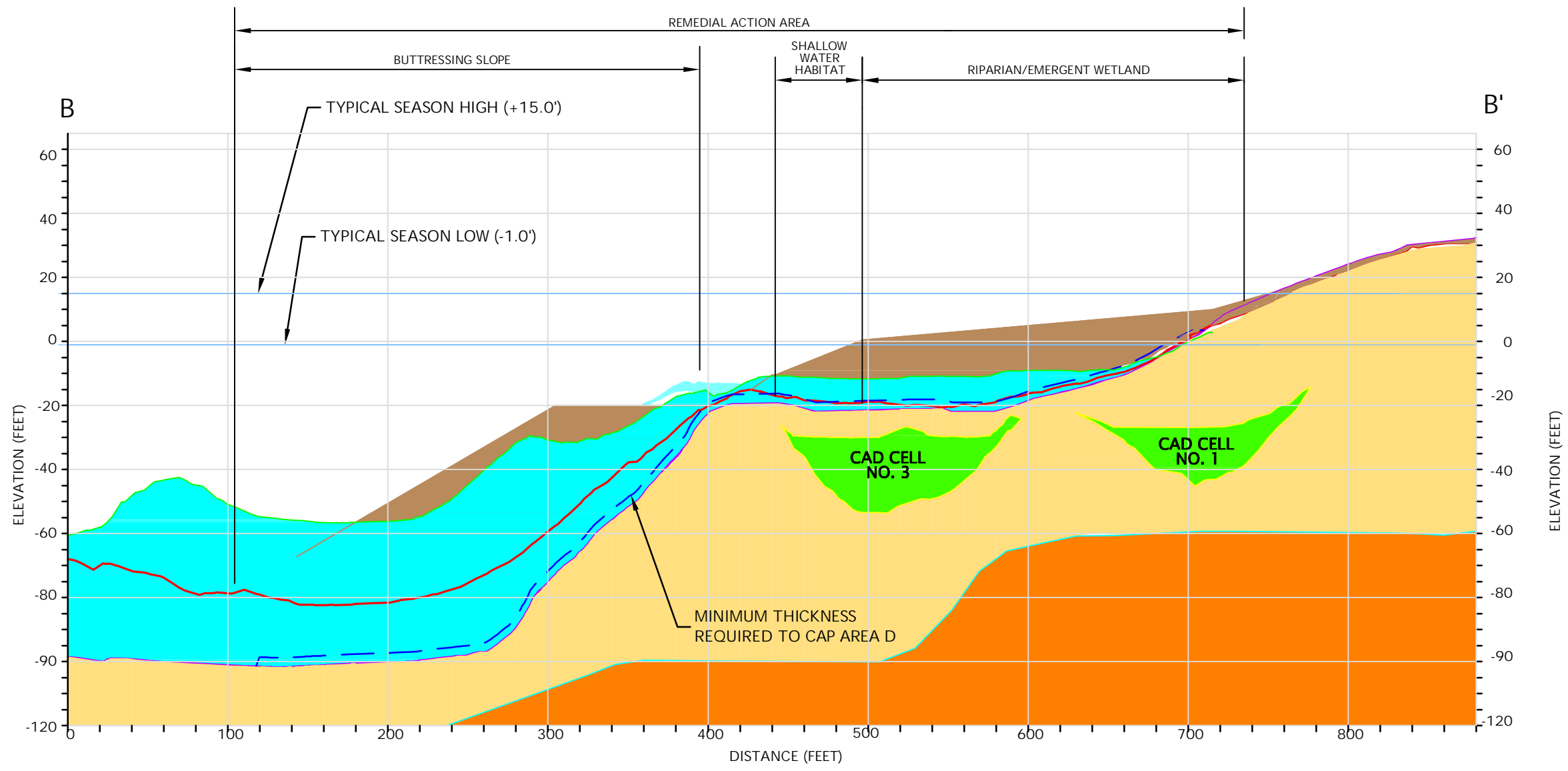
1. THIS SUBSURFACE PROFILE IS GENERALIZED FROM DRAWINGS PROVIDED BY LANDAU ASSOCIATES, INC. AND GEODESOGN, INC.. SURVEY DATA FROM MINISTER-GLAESER SURVEYING, INC., (3D)I, LLC, AND NORTHWEST HYDRO, INC.
2. ELEVATIONS ARE IN ROSS ISLAND DATUM.



2013 Annual Monitoring and Maintenance Report
 Ross Island Sand & Gravel Co.

FIGURE 6
Cross Section A-A'

Prepared By: Ross Island Sand & Gravel Co.
 Portland, Oregon
 Date: July 2013

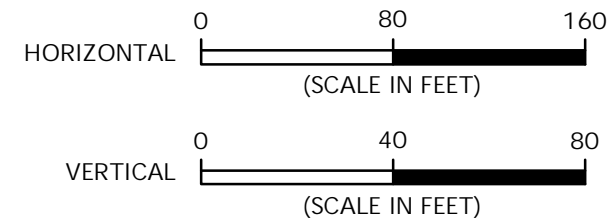


LEGEND:

- CONCEPTUAL RECLAMATION FILL SURFACE
- REMEDIAL/RECLAMATION FILL
- FINE SAND WITH SILT (FILL)
- EXISTING SURFACE AS SURVEYED MAY 2013
- EXISTING SURFACE AS SURVEYED DECEMBER 2009
- INFERRED SURFACE DECEMBER 2009
- EXISTING SURFACE AS SURVEYED NOVEMBER 2001
- INFERRED SURFACE NOVEMBER 2001

NOTES:

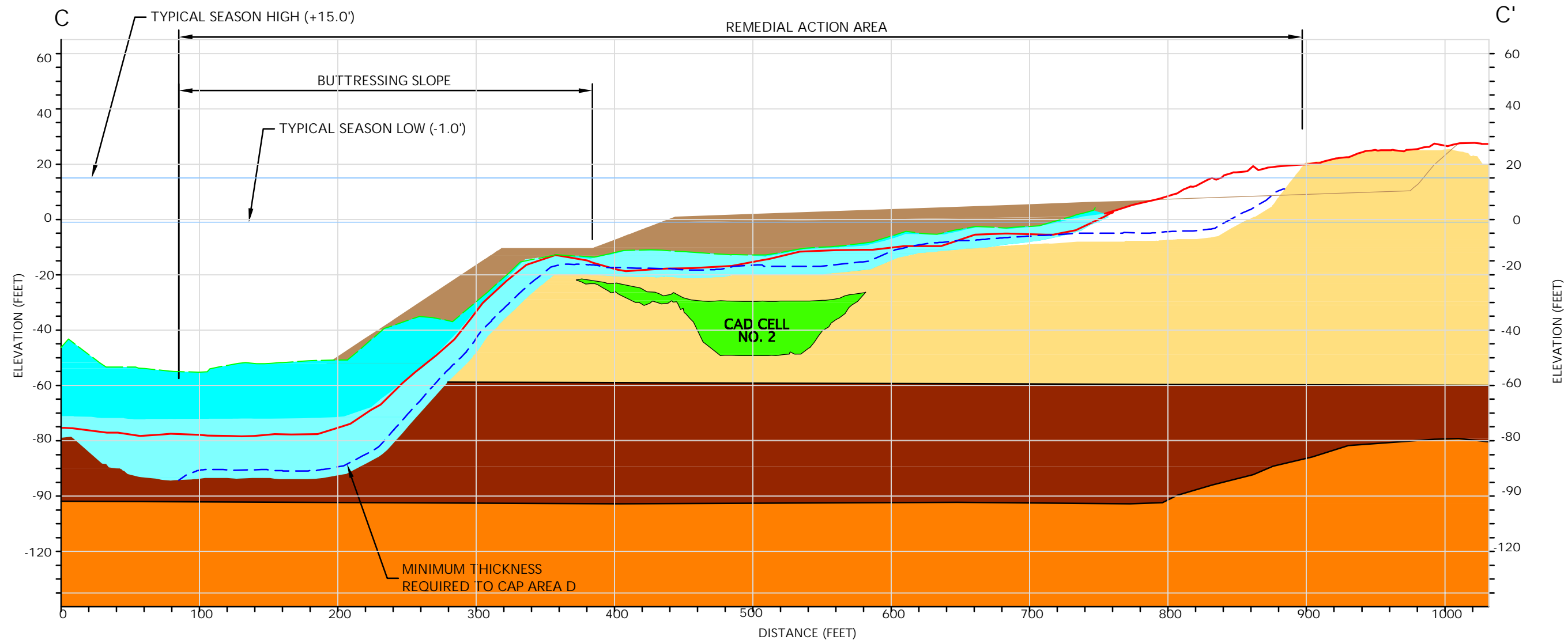
1. THIS SUBSURFACE PROFILE IS GENERALIZED FROM DRAWINGS PROVIDED BY LANDAU ASSOCIATES, INC. AND GEODESOGN, INC.. SURVEY DATA FROM MINISTER-GLAESER SURVEYING, INC., (3D)I, LLC, AND NORTHWEST HYDRO, INC.
2. ELEVATIONS ARE IN ROSS ISLAND DATUM.



2013 Annual Monitoring and Maintenance Report
 Ross Island Sand & Gravel Co.

FIGURE 7
Cross Section B-B'

Prepared By: Ross Island Sand & Gravel Co.
 Portland, Oregon
 Date: July 2013

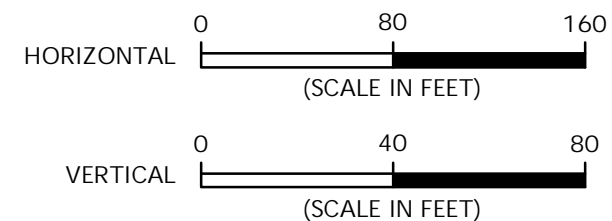


LEGEND:

- CONCEPTUAL RECLAMATION FILL SURFACE
- REMEDIAL/RECLAMATION FILL
- FINE SAND WITH SILT (FILL)
- EXISTING SURFACE AS SURVEYED MAY 2013
- EXISTING SURFACE AS SURVEYED DECEMBER 2009
- INFERRED SURFACE DECEMBER 2009
- EXISTING SURFACE AS SURVEYED NOVEMBER 2001
- INFERRED SURFACE NOVEMBER 2001

NOTES:

1. THIS SUBSURFACE PROFILE IS GENERALIZED FROM DRAWINGS PROVIDED BY LANDAU ASSOCIATES, INC. AND GEODESOGN, INC.. SURVEY DATA FROM MINISTER-GLAESER SURVEYING, INC., (3D)I, LLC, AND NORTHWEST HYDRO, INC.
2. ELEVATIONS ARE IN ROSS ISLAND DATUM.



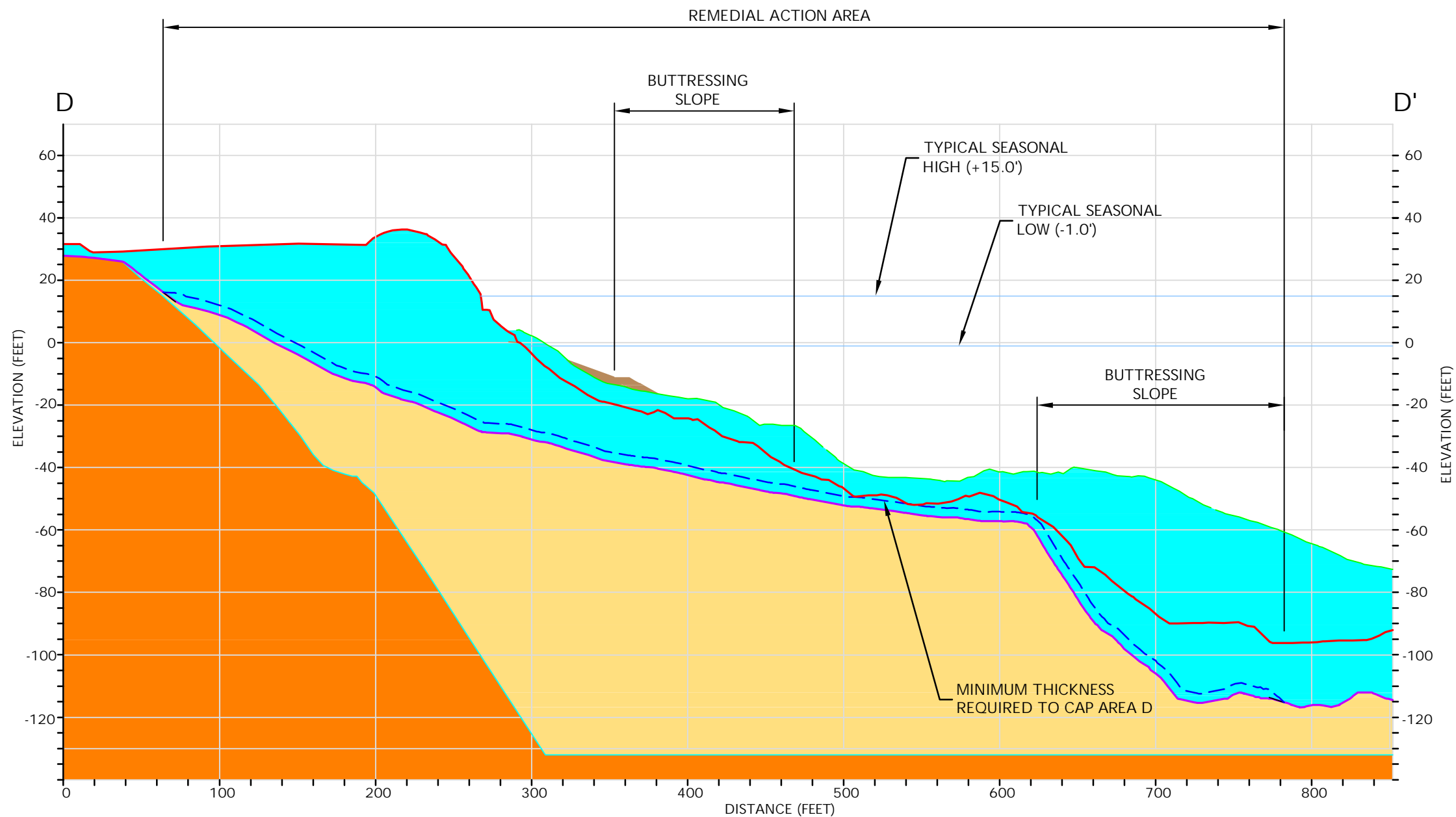
2013 Annual Monitoring and Maintenance Report

Ross Island Sand & Gravel Co.

FIGURE 8
Cross Section C-C'

Prepared By: Ross Island Sand & Gravel Co.
Portland, Oregon

Date: July 2013

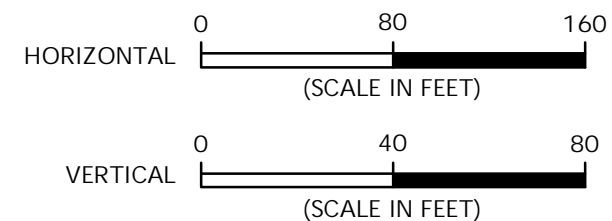


LEGEND:

- CONCEPTUAL RECLAMATION FILL SURFACE
- REMEDIAL/RECLAMATION FILL
- FINE SAND WITH SILT (FILL)
- EXISTING SURFACE AS SURVEYED MAY 2013
- EXISTING SURFACE AS SURVEYED DECEMBER 2009
- INFERRED SURFACE DECEMBER 2009
- EXISTING SURFACE AS SURVEYED NOVEMBER 2001
- INFERRED SURFACE NOVEMBER 2001

NOTES:

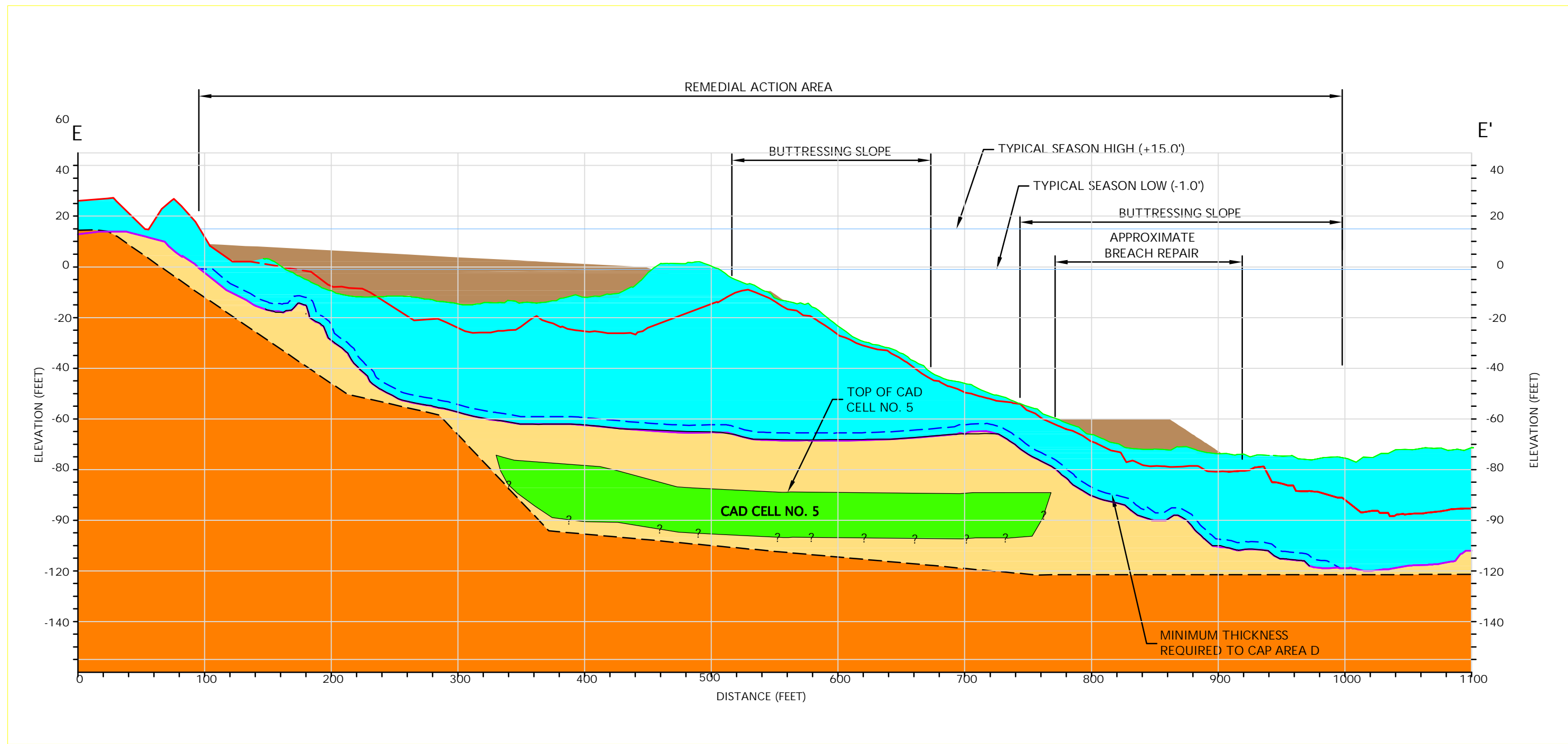
1. THIS SUBSURFACE PROFILE IS GENERALIZED FROM DRAWINGS PROVIDED BY LANDAU ASSOCIATES, INC. AND GEODESOGN, INC.. SURVEY DATA FROM MINISTER-GLAESER SURVEYING, INC., (3D)I, LLC, AND NORTHWEST HYDRO, INC.
2. ELEVATIONS ARE IN ROSS ISLAND DATUM.



2013 Annual Monitoring and Maintenance Report
 Ross Island Sand & Gravel Co.

FIGURE 9
Cross Section D-D'

Prepared By: Ross Island Sand & Gravel Co.
 Portland, Oregon
 Date: July 2013

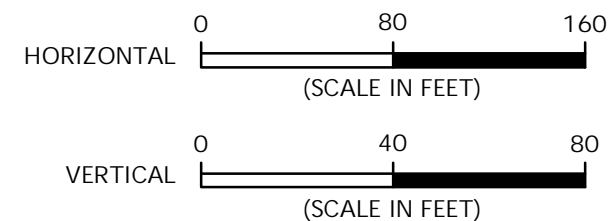


LEGEND:

- CONCEPTUAL RECLAMATION FILL SURFACE
- REMEDIAL/RECLAMATION FILL
- FINE SAND WITH SILT (FILL)
- EXISTING SURFACE AS SURVEYED MAY 2013
- EXISTING SURFACE AS SURVEYED DECEMBER 2009
- INFERRED SURFACE DECEMBER 2009
- EXISTING SURFACE AS SURVEYED NOVEMBER 2001
- INFERRED SURFACE NOVEMBER 2001

NOTES:

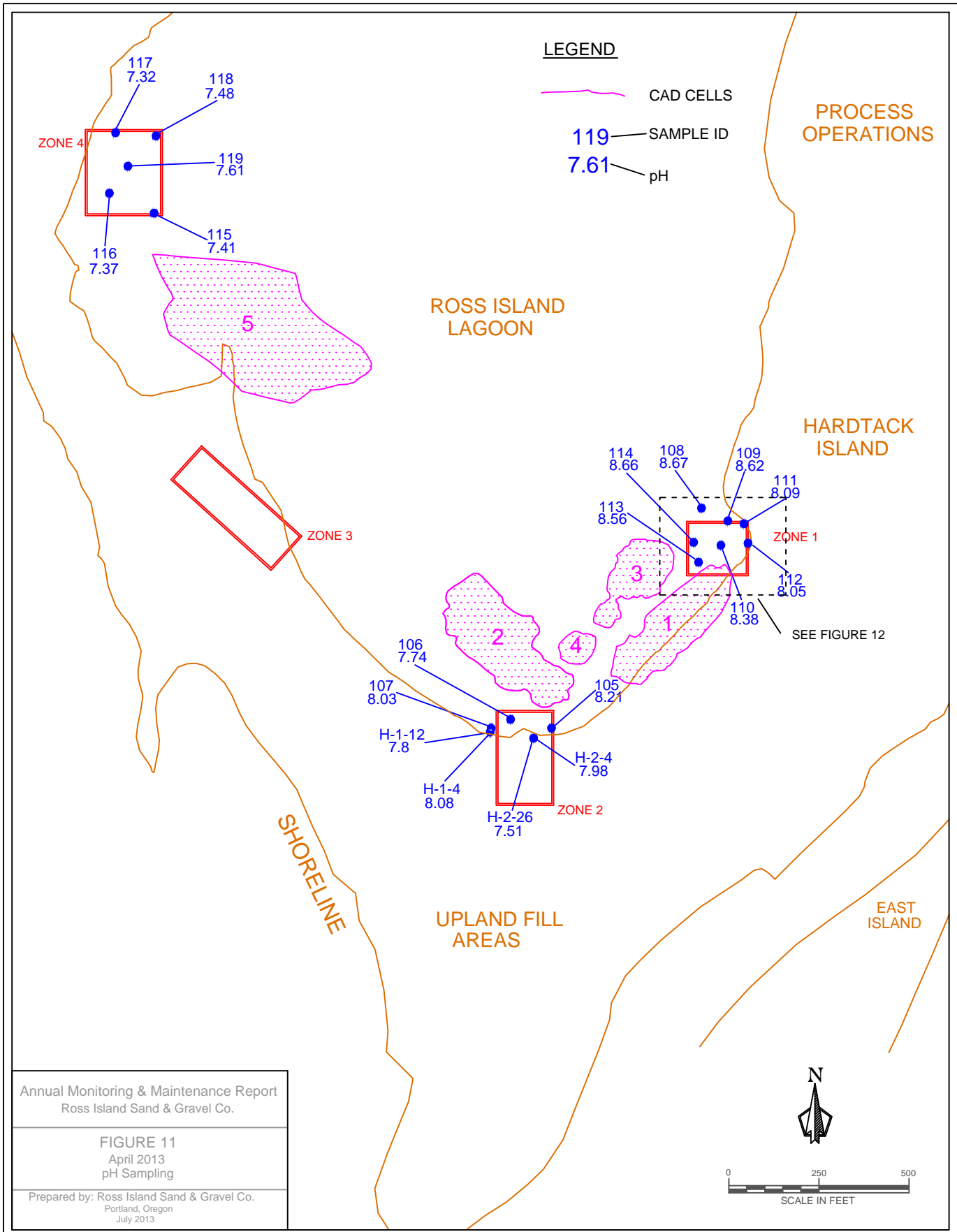
1. THIS SUBSURFACE PROFILE IS GENERALIZED FROM DRAWINGS PROVIDED BY LANDAU ASSOCIATES, INC. AND GEODESOGN, INC.. SURVEY DATA FROM MINISTER-GLAESER SURVEYING, INC., (3D)I, LLC, AND NORTHWEST HYDRO, INC.
2. ELEVATIONS ARE IN ROSS ISLAND DATUM.



2013 Annual Monitoring and Maintenance Report
 Ross Island Sand & Gravel Co.

FIGURE 10
Cross Section E-E'

Prepared By: Ross Island Sand & Gravel Co.
 Portland, Oregon
 Date: July 2013



Annual Monitoring & Maintenance Report
 Ross Island Sand & Gravel Co.

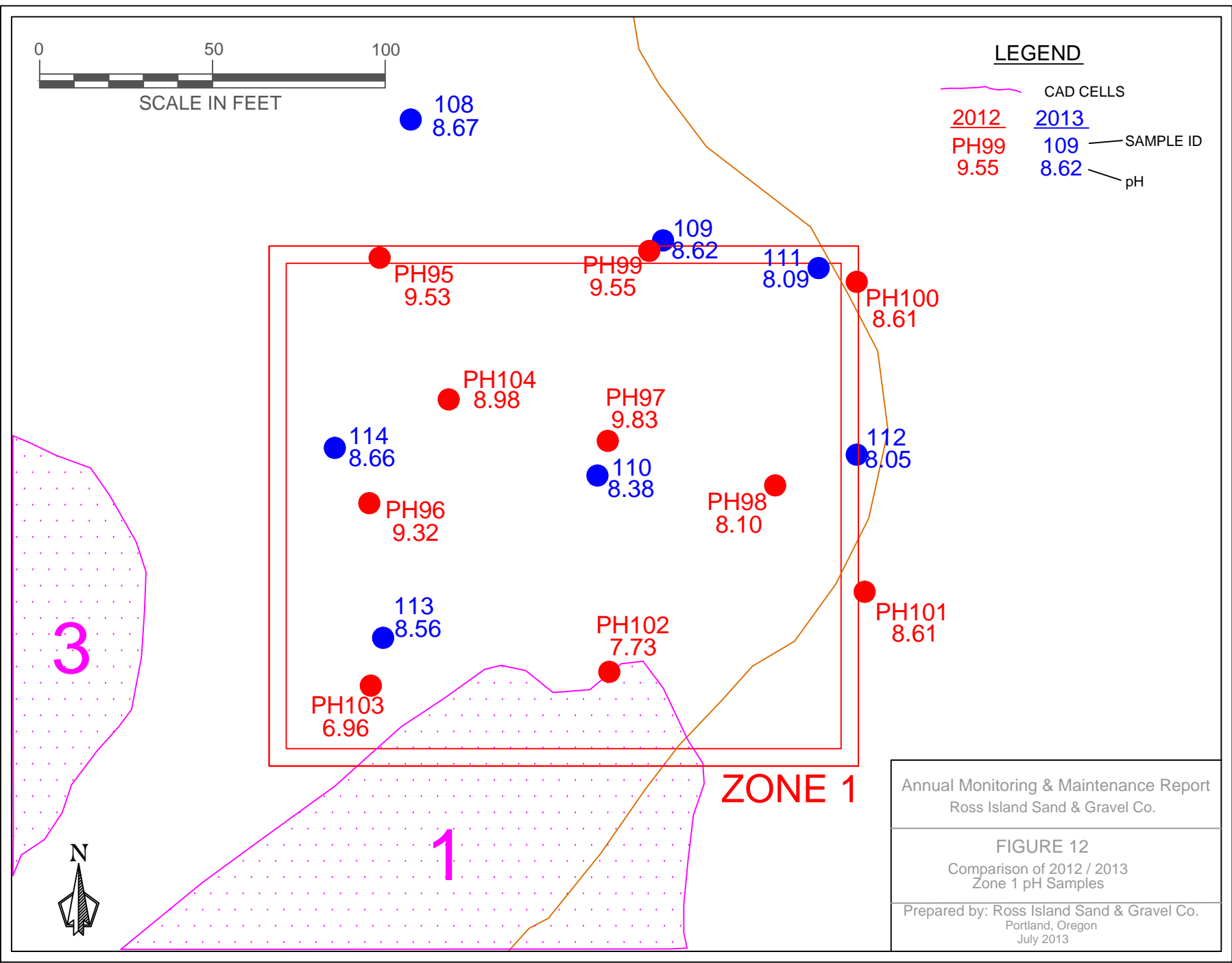
FIGURE 11
 April 2013
 pH Sampling

Prepared by: Ross Island Sand & Gravel Co.
 Portland, Oregon
 July 2013



LEGEND

	CAD CELLS	
<u>2012</u>	<u>2013</u>	
PH99	109	— SAMPLE ID
9.55	8.62	— pH

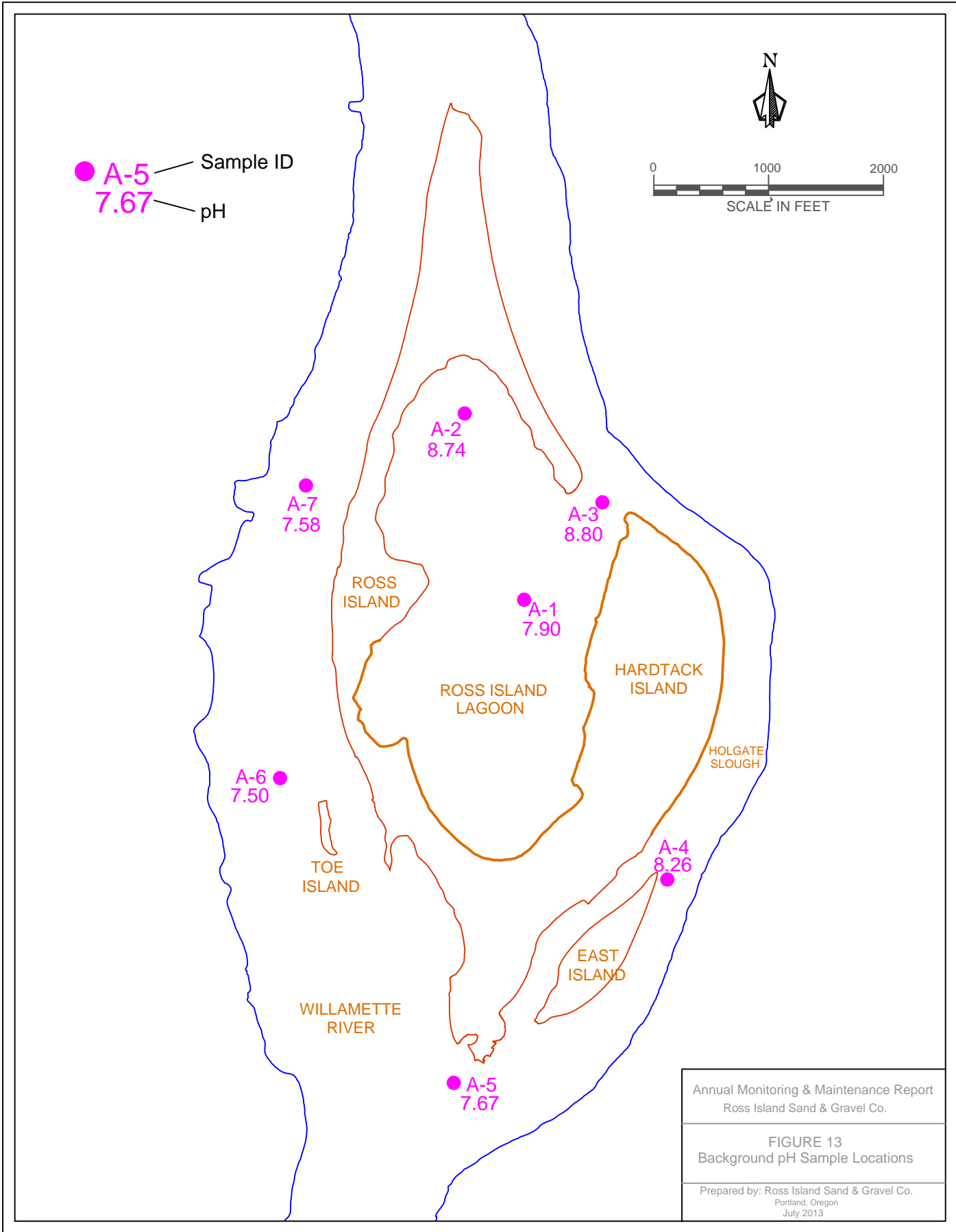


Sample ID	2012 pH	2013 pH
PH95	9.53	
PH96	9.32	
PH97	9.83	
PH98	8.10	
PH99	9.55	
PH100	8.61	
PH101	8.61	
PH102	7.73	
PH103	6.96	
PH104	8.98	
108		8.67
109		8.62
110		8.38
111		8.09
112		8.05
113		8.56
114		8.66

Annual Monitoring & Maintenance Report
Ross Island Sand & Gravel Co.

FIGURE 12
Comparison of 2012 / 2013
Zone 1 pH Samples

Prepared by: Ross Island Sand & Gravel Co.
Portland, Oregon
July 2013



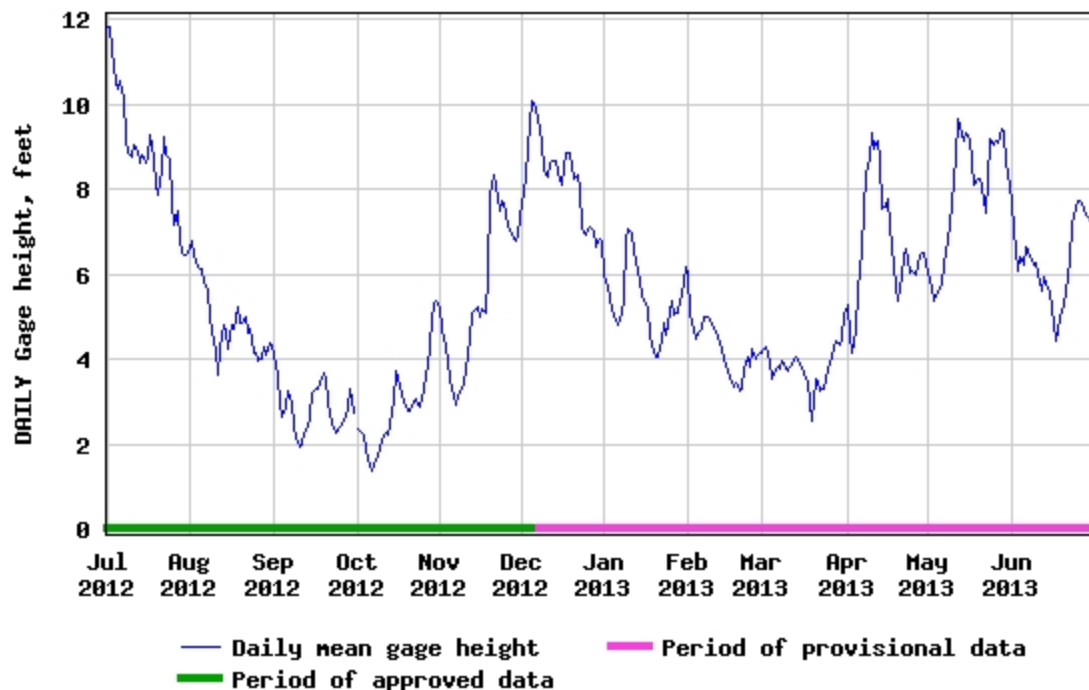
Annual Monitoring & Maintenance Report
 Ross Island Sand & Gravel Co.

FIGURE 13
 Background pH Sample Locations

Prepared by: Ross Island Sand & Gravel Co.
 Portland, Oregon
 July 2013

Appendix A

USGS 14211720 WILLAMETTE RIVER AT PORTLAND, OR



Date	24hr. Rainfall (.00 in.)	Hourly Totals (.00 in.)																							
		0	1	2	3	4	5	6	7	8	9	10	11	12	13	14	15	16	17	18	19	20	21	22	23
06-AUG-2012	0	0	0	0	0	0	0	0	0	0	0	0	0	0	0	0	0	0	0	0	0	0	0	0	0
05-AUG-2012	0	0	0	0	0	0	0	0	0	0	0	0	0	0	0	0	0	0	0	0	0	0	0	0	0
04-AUG-2012	0	0	0	0	0	0	0	0	0	0	0	0	0	0	0	0	0	0	0	0	0	0	0	0	0
03-AUG-2012	0	0	0	0	0	0	0	0	0	0	0	0	0	0	0	0	0	0	0	0	0	0	0	0	0
02-AUG-2012	0	0	0	0	0	0	0	0	0	0	0	0	0	0	0	0	0	0	0	0	0	0	0	0	0
01-AUG-2012	0	0	0	0	0	0	0	0	0	0	0	0	0	0	0	0	0	0	0	0	0	0	0	0	0
31-JUL-2012	0	0	0	0	0	0	0	0	0	0	0	0	0	0	0	0	0	0	0	0	0	0	0	0	0
30-JUL-2012	0	0	0	0	0	0	0	0	0	0	0	0	0	0	0	0	0	0	0	0	0	0	0	0	0
29-JUL-2012	0	0	0	0	0	0	0	0	0	0	0	0	0	0	0	0	0	0	0	0	0	0	0	0	0
28-JUL-2012	0	0	0	0	0	0	0	0	0	0	0	0	0	0	0	0	0	0	0	0	0	0	0	0	0
27-JUL-2012	0	0	0	0	0	0	0	0	0	0	0	0	0	0	0	0	0	0	0	0	0	0	0	0	0
26-JUL-2012	0	0	0	0	0	0	0	0	0	0	0	0	0	0	0	0	0	0	0	0	0	0	0	0	0
25-JUL-2012	0	0	0	0	0	0	0	0	0	0	0	0	0	0	0	0	0	0	0	0	0	0	0	0	0
24-JUL-2012	0	0	0	0	0	0	0	0	0	0	0	0	0	0	0	0	0	0	0	0	0	0	0	0	0
23-JUL-2012	0	0	0	0	0	0	0	0	0	0	0	0	0	0	0	0	0	0	0	0	0	0	0	0	0
22-JUL-2012	0	0	0	0	0	0	0	0	0	0	0	0	0	0	0	0	0	0	0	0	0	0	0	0	0
21-JUL-2012	0	0	0	0	0	0	0	0	0	0	0	0	0	0	0	0	0	0	0	0	0	0	0	0	0
20-JUL-2012	1	1	0	0	0	0	0	0	0	0	0	0	0	0	0	0	0	0	0	0	0	0	0	0	0
19-JUL-2012	0	0	0	0	0	0	0	0	0	0	0	0	0	0	0	0	0	0	0	0	0	0	0	0	0
18-JUL-2012	0	0	0	0	0	0	0	0	0	0	0	0	0	0	0	0	0	0	0	0	0	0	0	0	0
17-JUL-2012	0	0	0	0	0	0	0	0	0	0	0	0	0	0	0	0	0	0	0	0	0	0	0	0	0
16-JUL-2012	0	0	0	0	0	0	0	0	0	0	0	0	0	0	0	0	0	0	0	0	0	0	0	0	0
15-JUL-2012	11	0	0	0	0	0	0	1	2	6	1	0	0	1	0	0	0	0	0	0	0	0	0	0	0
14-JUL-2012	0	0	0	0	0	0	0	0	0	0	0	0	0	0	0	0	0	0	0	0	0	0	0	0	0
13-JUL-2012	0	0	0	0	0	0	0	0	0	0	0	0	0	0	0	0	0	0	0	0	0	0	0	0	0
12-JUL-2012	0	0	0	0	0	0	0	0	0	0	0	0	0	0	0	0	0	0	0	0	0	0	0	0	0
11-JUL-2012	0	0	0	0	0	0	0	0	0	0	0	0	0	0	0	0	0	0	0	0	0	0	0	0	0
10-JUL-2012	0	0	0	0	0	0	0	0	0	0	0	0	0	0	0	0	0	0	0	0	0	0	0	0	0
09-JUL-2012	0	0	0	0	0	0	0	0	0	0	0	0	0	0	0	0	0	0	0	0	0	0	0	0	0
08-JUL-2012	0	0	0	0	0	0	0	0	0	0	0	0	0	0	0	0	0	0	0	0	0	0	0	0	0
07-JUL-2012	0	0	0	0	0	0	0	0	0	0	0	0	0	0	0	0	0	0	0	0	0	0	0	0	0
06-JUL-2012	0	0	0	0	0	0	0	0	0	0	0	0	0	0	0	0	0	0	0	0	0	0	0	0	0
05-JUL-2012	0	0	0	0	0	0	0	0	0	0	0	0	0	0	0	0	0	0	0	0	0	0	0	0	0
04-JUL-2012	0	0	0	0	0	0	0	0	0	0	0	0	0	0	0	0	0	0	0	0	0	0	0	0	0
03-JUL-2012	1	0	0	0	1	0	0	0	0	0	0	0	0	0	0	0	0	0	0	0	0	0	0	0	1
02-JUL-2012	1	0	0	0	0	0	0	0	0	0	0	0	0	0	0	0	0	0	0	0	0	0	0	0	0
01-JUL-2012	14	2	8	1	1	1	1	0	0	0	0	0	0	0	0	0	0	0	0	0	0	0	0	0	0

**UPLAND MONITORING AND MAINTENANCE FORM
Remedial Action Area B**

Date and Time: 4-26-13 14:50 Weather: Sunny / Warm

Name: Tony Signature _____

Other Parties Present During Monitoring Event: N/A

Date DEQ notified: N/A

Reason for Monitoring Event: Routine/Significant Event
Describe significant event (e.g., 3.4 inches of rain in 24 hours, Flood stage of 18 feet RID, Flood stage of 24 feet, RID, Seismic event 6.0 or greater):
Annual Report

This form documents field observations of the remedial actions. Areas of concern and sample locations, if collected, are identified on the attached site maps. Photo-documentation of each remedial action area is also attached.

Remedial Action Area B Soil Cap (Includes soil from Remedial Action Area A1)

General condition of soil cap: Great shape

Cracks, Settlement? YES NO
Location: _____

Maintenance required? YES NO

Holes, Penetrations? YES NO
Location: _____

Maintenance required? YES NO

Animal intrusion, burrowing? YES NO
Location: _____

Maintenance required? YES NO

Erosion, rills?

YES

NO

Location: _____

Maintenance required?

YES

NO

Subsurface soil (>3 feet) exposed?

YES

NO

Location: _____

Maintenance required?

YES

NO

Ponding?

YES

NO

Location: _____

Maintenance required?

YES

NO

Dead/dying vegetation?

YES

NO

Location: _____

Maintenance required?

YES

NO

Do any observations warrant urgent attention?

YES

NO

If yes, describe: _____

Are contingency measures necessary?

YES

NO

If yes, describe: _____

UPLAND MONITORING AND MAINTENANCE FORM
Remedial Action Sub-Areas A2-1, A2-2, and A2-3

Date and Time: 4-26-13 15:00 Weather: Sunny

Name: Tony W. Signature _____

Other Parties Present During Monitoring Event: N/A

Date DEQ notified: N/A

Reason for Monitoring Event: Routine 0.5 Inch of rain in 24 hours/Significant Event
 Describe significant event (e.g., 3.4 Inches of rain in 24 hours, Flood stage of 18 feet RID, Flood stage of 24 feet, RID, Seismic event 6.0 or greater):
Annual Report

This form documents field observations of the remedial actions. Areas of concern and sample locations, if collected, are identified on the attached site maps. Photo-documentation of each remedial action area is also attached.

REMEDIAL ACTION SUB-AREAS A2-1 and A2-3 - EROSION CONTROL BMPS

Remedial Action Sub-Area	BMP	Describe Condition of BMP	Maintenance/Action Needed
A2-1	Drainage Berms	Excellent	Yes <input type="checkbox"/> No <input checked="" type="checkbox"/>
	Biofilter Bags	Excellent	Yes <input type="checkbox"/> No <input checked="" type="checkbox"/>
	Gravel	Excellent	Yes <input type="checkbox"/> No <input checked="" type="checkbox"/>
	Ditches	Excellent	Yes <input type="checkbox"/> No <input checked="" type="checkbox"/>
	Vegetation	Excellent	Yes <input type="checkbox"/> No <input checked="" type="checkbox"/>
	Ecology Block	Excellent	Yes <input type="checkbox"/> No <input checked="" type="checkbox"/>
A2-3	Gravel	Excellent	Yes <input type="checkbox"/> No <input checked="" type="checkbox"/>
	Filter Trench	Excellent	Yes <input type="checkbox"/> No <input checked="" type="checkbox"/>

Do any observations warrant urgent attention?

YES

NO

If yes, describe:

Are contingency measures necessary?

YES

NO

If yes, describe:

REMEDIAL ACTION SUB-AREA A2-2

General condition of slope

Excellent Condition

Are there signs of erosion on the slope (e.g., sloughing, rivelets, or rills)?

YES

NO

If yes, provide description:

Are the ecology blocks intact and aligned?

YES

NO

If no, provide description:

Tide is too high to see ecology blocks
Assume they are intact and aligned.

Are there signs of erosion adjacent to the ecology blocks?

YES

NO

If yes, provide description:

There is no signs of erosion on
slope area adjacent to blocks. Cant see blocks due to
high tide

Do any observations warrant urgent attention?

YES

NO

If yes, describe:

Are contingency measures necessary?

YES

NO

If yes, describe:

BATHYMETRY REVIEW FORM

Survey completed by: NW Hydro
Equipment used: _____

Review Date: Aug. 27, 2013
Reviewer(s) Greg Murphy, Ross Estlund
Signature: Gregory Murphy

The lagoon bathymetry data has been reviewed. Lagoon bathymetric elevations have been summarized on the attached figure.

Lagoon Bathymetry

General Condition of Sediment Cap: The bathymetry survey shows an intact cap with gains in elevation compared to the 2001 survey.

General Condition of slopes: Slopes look stable. Cross sections generated show an increase in elevation at slope toes compared to the 2012 survey, with slopes currently ranging from 2H:1V to zero slope

Are there any signs of erosion or thinning of sediment cap? YES NO
If yes, provide description: _____

Are there any signs of slope failure? YES NO
If yes, provide description: _____

Do any observations warrant urgent attention? YES NO
If yes, provide description: _____

Are contingency measures necessary based on review? YES NO
If yes, provide description: _____

Maintenance performed since last reporting period: RISG placed fill in Zone 1 to lessen pH

in bit #26
X 462 (2)

UPLAND MONITORING AND MAINTENANCE FORM
Remedial Action Area B

Date and Time: 5-28-13 14:10 Weather: Cloudy / Drizzle

Name: Tony W. Signature

Other Parties Present During Monitoring Event: N/A

Date DEQ notified: N/A

Reason for Monitoring Event: Routine/Significant Event
Describe significant event (e.g., 3.4 inches of rain in 24 hours, Flood stage of 18 feet RID, Flood stage of 24 feet, RID, Seismic event 6.0 or greater):

This form documents field observations of the remedial actions. Areas of concern and sample locations, if collected, are identified on the attached site maps. Photo-documentation of each remedial action area is also attached.

Remedial Action Area B Soil Cap (Includes soil from Remedial Action Area A1)

General condition of soil cap:

Cracks, Settlement? YES NO
Location:

Maintenance required? YES NO

Holes, Penetrations? YES NO
Location:

Maintenance required? YES NO

Animal Intrusion, burrowing? YES NO
Location:

Maintenance required? YES NO

Erosion, rills? YES NO

Location: _____

Maintenance required? YES NO

Subsurface soil (>3 feet) exposed? YES NO

Location: _____

Maintenance required? YES NO

Ponding? YES NO

Location: _____

Maintenance required? YES NO

Dead/dying vegetation? YES NO

Location: _____

Maintenance required? YES NO

Do any observations warrant urgent attention? YES NO

If yes, describe: _____

Are contingency measures necessary? YES NO

If yes, describe: _____

UPLAND MONITORING AND MAINTENANCE FORM
Remedial Action Sub-Areas A2-1, A2-2, and A2-3

Date and Time: 5-28-13 14:10 Weather: cloudy/mist/windy

Name: _____ Signature _____

Other Parties Present During Monitoring Event: N/A

Date DEQ notified: N/A

Reason for Monitoring Event: Routine/0.5 inch of rain in 24 hours/Significant Event
 Describe significant event (e.g., 3.4 inches of rain in 24 hours, Flood stage of 18 feet RID, Flood stage of 24 feet, RID, Seismic event 6.0 or greater): 0.71" Rainfall 5-27-13

This form documents field observations of the remedial actions. Areas of concern and sample locations, if collected, are identified on the attached site maps. Photo-documentation of each remedial action area is also attached.

REMEDIAL ACTION SUB-AREAS A2-1 and A2-3 - EROSION CONTROL BMPS

Remedial Action Sub-Area	BMP	Describe Condition of BMP	Maintenance/Action Needed
A2-1	Drainage Berms	Excellent	Yes <input type="checkbox"/> No <input checked="" type="checkbox"/>
	Biofilter Bags	Excellent	Yes <input type="checkbox"/> No <input checked="" type="checkbox"/>
	Gravel	Excellent	Yes <input type="checkbox"/> No <input checked="" type="checkbox"/>
	Ditches	Excellent	Yes <input type="checkbox"/> No <input checked="" type="checkbox"/>
	Vegetation	Excellent	Yes <input type="checkbox"/> No <input checked="" type="checkbox"/>
	Ecology Block	Excellent	Yes <input type="checkbox"/> No <input checked="" type="checkbox"/>
A2-3	Gravel	Excellent	Yes <input type="checkbox"/> No <input checked="" type="checkbox"/>
	Filter Trench	Excellent	Yes <input type="checkbox"/> No <input checked="" type="checkbox"/>

Do any observations warrant urgent attention?

YES

NO

If yes, describe:

Are contingency measures necessary?

YES

NO

If yes, describe:

REMEDIAL ACTION SUB-AREA A2-2

General condition of slope

Very good

Are there signs of erosion on the slope (e.g., sloughing, rivelets, or rills)?

YES

NO

If yes, provide description:

Are the ecology blocks intact and aligned?

YES

NO

If no, provide description:

blocks are under water not visible due to high tide
Assume they are intact

Are there signs of erosion adjacent to the ecology blocks?

YES

NO

If yes, provide description:

Do any observations warrant urgent attention?

YES

NO

If yes, describe:

Are contingency measures necessary?

YES

NO

If yes, describe:

**UPLAND MONITORING AND MAINTENANCE FORM
Remedial Action Area B**

Date and Time: May 24th, 2013 Weather: Cloudy Windy

10:30

Name: _____ Signature _____

Other Parties Present During Monitoring Event: N/A

Date DEQ notified: N/A

Reason for Monitoring Event: Routine/Significant Event

Describe significant event (e.g., 3.4 inches of rain in 24 hours, Flood stage of 18 feet RID, Flood stage of 24 feet, RID, Selsmic event 6.0 or greater): _____

This form documents field observations of the remedial actions. Areas of concern and sample locations, if collected, are identified on the attached site maps. Photo-documentation of each remedial action area is also attached.

Remedial Action Area B Soil Cap (Includes soil from Remedial Action Area A1)

General conditlon of soil cap: _____

Cracks, Settlement? YES NO
Location: _____

Maintenance required? YES NO

Holes, Penetrations? YES NO
Location: _____

Maintenance required? YES NO

Animal Intrusion, burrowing? YES NO
Location: _____

Maintenance required? YES NO

Erosion, rills? YES NO

Location: _____

Maintenance required? YES NO

Subsurface soil (>3 feet) exposed? YES NO

Location: _____

Maintenance required? YES NO

Ponding? YES NO

Location: _____

Maintenance required? YES NO

Dead/dying vegetation? YES NO

Location: _____

Maintenance required? YES NO

Do any observations warrant urgent attention? YES NO

If yes, describe: _____

Are contingency measures necessary? YES NO

If yes, describe: _____

UPLAND MONITORING AND MAINTENANCE FORM
Remedial Action Sub-Areas A2-1, A2-2, and A2-3

Date and Time: May 24th, 2013 Weather: Cloudy Windy
10:30

Name: _____ Signature: _____

Other Parties Present During Monitoring Event: N/A

Date DEQ notified: N/A

Reason for Monitoring Event: Routine / 0.5 Inch of rain in 24 hours / Significant Event
 Describe significant event (e.g., 3.4 inches of rain in 24 hours, Flood stage of 18 feet RID, Flood stage of 24 feet, RID, Seismic event 6.0 or greater):
May 23rd Rainfall (0.74")

This form documents field observations of the remedial actions. Areas of concern and sample locations, if collected, are identified on the attached site maps. Photo-documentation of each remedial action area is also attached.

REMEDIAL ACTION SUB-AREAS A2-1 and A2-3 - EROSION CONTROL BMPS

Remedial Action Sub-Area	BMP	Describe Condition of BMP	Maintenance/Action Needed
A2-1	Drainage Berms	EXCELLENT	Yes <input type="checkbox"/> No <input checked="" type="checkbox"/>
	Biofilter Bags	EXCELLENT	Yes <input type="checkbox"/> No <input checked="" type="checkbox"/>
	Gravel	EXCELLENT	Yes <input type="checkbox"/> No <input checked="" type="checkbox"/>
	Ditches	EXCELLENT	Yes <input type="checkbox"/> No <input checked="" type="checkbox"/>
	Vegetation	EXCELLENT	Yes <input type="checkbox"/> No <input checked="" type="checkbox"/>
	Ecology Block	EXCELLENT	Yes <input type="checkbox"/> No <input checked="" type="checkbox"/>
A2-3	Gravel	EXCELLENT	Yes <input type="checkbox"/> No <input checked="" type="checkbox"/>
	Filter Trench	EXCELLENT	Yes <input type="checkbox"/> No <input checked="" type="checkbox"/>

Do any observations warrant urgent attention?

YES

NO

If yes, describe:

Are contingency measures necessary?

YES

NO

If yes, describe:

REMEDIAL ACTION SUB-AREA A2-2

General condition of slope

Very good

Are there signs of erosion on the slope (e.g., sloughing, rivelets, or rills)?

YES

NO

If yes, provide description:

Are the ecology blocks intact and aligned?

YES

NO

If no, provide description:

Tide is high so blocks are under water cannot be seen. Assume they are intact

Are there signs of erosion adjacent to the ecology blocks?

YES

NO

If yes, provide description:

Do any observations warrant urgent attention?

YES

NO

If yes, describe:

Are contingency measures necessary?

YES

NO

If yes, describe:

UPLAND MONITORING AND MAINTENANCE FORM
Remedial Action Sub-Areas A2-1, A2-2, and A2-3

Date and Time: 5-23-13 Weather: Partial cloudy / drizzle

Name: Tony W Signature: _____

Other Parties Present During Monitoring Event: N/A

Date DEQ notified: N/A

Reason for Monitoring Event: Routine/0.5 inch of rain in 24 hours/Significant Event
 Describe significant event (e.g., 3.4 inches of rain in 24 hours, Flood stage of 18 feet RID, Flood stage of 24 feet, RID, Seismic event 6.0 or greater):
Rainfall 5-22-13 1.38"

This form documents field observations of the remedial actions. Areas of concern and sample locations, if collected, are identified on the attached site maps. Photo-documentation of each remedial action area is also attached.

REMEDIAL ACTION SUB-AREAS A2-1 and A2-3 - EROSION CONTROL BMPS

Remedial Action Sub-Area	BMP	Describe Condition of BMP	Maintenance/Action Needed
A2-1	Drainage Berms	EXcellent	Yes <input type="checkbox"/> No <input checked="" type="checkbox"/>
	Biofilter Bags	EXcellent	Yes <input type="checkbox"/> No <input checked="" type="checkbox"/>
	Gravel	EXcellent	Yes <input type="checkbox"/> No <input checked="" type="checkbox"/>
	Ditches	EXcellent	Yes <input type="checkbox"/> No <input checked="" type="checkbox"/>
	Vegetation	EXcellent	Yes <input type="checkbox"/> No <input checked="" type="checkbox"/>
	Ecology Block	EXcellent	Yes <input type="checkbox"/> No <input checked="" type="checkbox"/>
A2-3	Gravel	EXcellent	Yes <input type="checkbox"/> No <input checked="" type="checkbox"/>
	Filter Trench	EXcellent	Yes <input type="checkbox"/> No <input checked="" type="checkbox"/>

Do any observations warrant urgent attention?

YES

NO

If yes, describe:

Are contingency measures necessary?

YES

NO

If yes, describe:

REMEDIAL ACTION SUB-AREA A2-2

General condition of slope

Excellent condition

Are there signs of erosion on the slope (e.g., sloughing, rivelets, or rills)?

YES

NO

If yes, provide description:

Are the ecology blocks intact and aligned?

YES

NO

If no, provide description:

Blocks are not visible due to high tide
Assume blocks are intact

Are there signs of erosion adjacent to the ecology blocks?

YES

NO

If yes, provide description:

Do any observations warrant urgent attention?

YES

NO

If yes, describe:

Are contingency measures necessary?

YES

NO

If yes, describe:

**UPLAND MONITORING AND MAINTENANCE FORM
Remedial Action Area B**

Date and Time: _____ Weather: _____

Name: _____ Signature _____

Other Parties Present During Monitoring Event: _____

Date DEQ notified: _____

Reason for Monitoring Event: Routine/Significant Event

Describe significant event (e.g., 3.4 inches of rain in 24 hours, Flood stage of 18 feet RID, Flood stage of 24 feet, RID, Selsmic event 6.0 or greater): _____

This form documents field observations of the remedial actions. Areas of concern and sample locations, if collected, are identified on the attached site maps. Photo-documentation of each remedial action area is also attached.

Remedial Action Area B Soil Cap (Includes soil from Remedial Action Area A1)

General condition of soil cap: _____

Cracks, Settlement? YES NO

Location: _____

Maintenance required? YES NO

Holes, Penetrations? YES NO

Location: _____

Maintenance required? YES NO

Animal Intrusion, burrowing? YES NO

Location: _____

Maintenance required? YES NO

Erosion, rills? YES NO

Location: _____

Maintenance required? YES NO

Subsurface soil (>3 feet) exposed? YES NO

Location: _____

Maintenance required? YES NO

Ponding? YES NO

Location: _____

Maintenance required? YES NO

Dead/dying vegetation? YES NO

Location: _____

Maintenance required? YES NO

Do any observations warrant urgent attention? YES NO

If yes, describe: _____

Are contingency measures necessary? YES NO

If yes, describe: _____

UPLAND MONITORING AND MAINTENANCE FORM
Remedial Action Sub-Areas A2-1, A2-2, and A2-3

Date and Time: 10:15 @ 5-22-13 Weather: Rainy

Name: Tony Signature _____

Other Parties Present During Monitoring Event: _____

Date DEQ notified: N/A

Reason for Monitoring Event: Routine/0.5 inch of rain in 24 hours/Significant Event
 Describe significant event (e.g., 3.4 inches of rain in 24 hours, Flood stage of 18 feet RID, Flood stage of 24 feet, RID, Seismic event 6.0 or greater):
Rain on 5-21-13 (0.67")

This form documents field observations of the remedial actions. Areas of concern and sample locations, if collected, are identified on the attached site maps. Photo-documentation of each remedial action area is also attached.

REMEDIAL ACTION SUB-AREAS A2-1 and A2-3 - EROSION CONTROL BMPS

Remedial Action Sub-Area	BMP	Describe Condition of BMP	Maintenance/Action Needed
A2-1	Drainage Berms	Excellent	Yes <input type="checkbox"/> No <input checked="" type="checkbox"/>
	Biofilter Bags	Excellent	Yes <input type="checkbox"/> No <input checked="" type="checkbox"/>
	Gravel	Excellent	Yes <input type="checkbox"/> No <input checked="" type="checkbox"/>
	Ditches	Excellent	Yes <input type="checkbox"/> No <input checked="" type="checkbox"/>
	Vegetation	Excellent	Yes <input type="checkbox"/> No <input checked="" type="checkbox"/>
	Ecology Block	Excellent	Yes <input type="checkbox"/> No <input checked="" type="checkbox"/>
A2-3	Gravel	Excellent	Yes <input type="checkbox"/> No <input checked="" type="checkbox"/>
	Filter Trench	Excellent	Yes <input type="checkbox"/> No <input checked="" type="checkbox"/>

Do any observations warrant urgent attention? YES NO
If yes, describe: _____

Are contingency measures necessary? YES NO
If yes, describe: _____

REMEDIAL ACTION SUB-AREA A2-2

General condition of slope Excellent Condition

Are there signs of erosion on the slope (e.g., sloughing, rivelets, or rills)? YES NO
If yes, provide description: _____

Are the ecology blocks intact and aligned? YES NO
If no, provide description: Due to high water, the blocks cannot be seen under water. Assume the blocks are intact.

Are there signs of erosion adjacent to the ecology blocks? YES NO
If yes, provide description: _____

Do any observations warrant urgent attention? YES NO
If yes, describe: _____

Are contingency measures necessary? YES NO
If yes, describe: _____

UPLAND MONITORING AND MAINTENANCE FORM
Remedial Action Area B

Date and Time: 5-22-13 10:15 Weather: Rainy

Name: Tony W. Signature _____

Other Parties Present During Monitoring Event: N/A

Date DEQ notified: N/A

Reason for Monitoring Event: Routine/Significant Event

Describe significant event (e.g., 3.4 inches of rain in 24 hours, Flood stage of 18 feet RID, Flood stage of 24 feet, RID, Seismic event 6.0 or greater):

This form documents field observations of the remedial actions. Areas of concern and sample locations, if collected, are identified on the attached site maps. Photo-documentation of each remedial action area is also attached.

Remedial Action Area B Soil Cap (Includes soil from Remedial Action Area A1)

General condition of soil cap: _____

Cracks, Settlement? YES NO
Location: _____

Maintenance required? YES NO

Holes, Penetrations? YES NO
Location: _____

Maintenance required? YES NO

Animal Intrusion, burrowing? YES NO
Location: _____

Maintenance required? YES NO

Erosion, rills? YES NO

Location: _____

Maintenance required? YES NO

Subsurface soil (>3 feet) exposed? YES NO

Location: _____

Maintenance required? YES NO

Ponding? YES NO

Location: _____

Maintenance required? YES NO

Dead/dying vegetation? YES NO

Location: _____

Maintenance required? YES NO

Do any observations warrant urgent attention? YES NO

If yes, describe: _____

Are contingency measures necessary? YES NO

If yes, describe: _____

UPLAND MONITORING AND MAINTENANCE FORM
Remedial Action Sub-Areas A2-1, A2-2, and A2-3

Date and Time: 11-21-12 13:30 Weather: Partial Cloudy

Name: Tony W Signature: _____

Other Parties Present During Monitoring Event: N/A

Date DEQ notified: N/A

Reason for Monitoring Event: Routine (0.5 inch of rain in 24 hours) / Significant Event
 Describe significant event (e.g., 3.4 inches of rain in 24 hours, Flood stage of 18 feet RID, Flood stage of 24 feet, RID, Seismic event 6.0 or greater): 0.60" Rainfall 24 hrs. (11-20-12)

This form documents field observations of the remedial actions. Areas of concern and sample locations, if collected, are identified on the attached site maps. Photo-documentation of each remedial action area is also attached.

REMEDIAL ACTION SUB-AREAS A2-1 and A2-3 - EROSION CONTROL BMPS

Remedial Action Sub-Area	BMP	Describe Condition of BMP	Maintenance/Action Needed
A2-1	Drainage Berms	Excellent	Yes <input type="checkbox"/> No <input checked="" type="checkbox"/>
	Biofilter Bags	Excellent	Yes <input type="checkbox"/> No <input checked="" type="checkbox"/>
	Gravel	Excellent	Yes <input type="checkbox"/> No <input checked="" type="checkbox"/>
	Ditches	Excellent	Yes <input type="checkbox"/> No <input checked="" type="checkbox"/>
	Vegetation	Excellent	Yes <input type="checkbox"/> No <input checked="" type="checkbox"/>
	Ecology Block	Excellent	Yes <input type="checkbox"/> No <input checked="" type="checkbox"/>
A2-3	Gravel	Very good	Yes <input type="checkbox"/> No <input checked="" type="checkbox"/>
	Filter Trench	Very good	Yes <input type="checkbox"/> No <input checked="" type="checkbox"/>

Do any observations warrant urgent attention? YES NO
If yes, describe: Standing water in some small areas

Are contingency measures necessary? YES NO
If yes, describe: _____

REMEDIAL ACTION SUB-AREA A2-2

General condition of slope Very good condition

Are there signs of erosion on the slope (e.g., sloughing, rivelets, or rills)? YES NO
If yes, provide description: _____

Are the ecology blocks intact and aligned? YES NO
If no, provide description: Due to high water, blocks cannot be seen. Assuming they are intact

Are there signs of erosion adjacent to the ecology blocks? YES NO
If yes, provide description: _____

Do any observations warrant urgent attention? YES NO
If yes, describe: _____

Are contingency measures necessary? YES NO
If yes, describe: _____

UPLAND MONITORING AND MAINTENANCE FORM
Remedial Action Area B

Date and Time: 11-20-12 11:15 Weather: Partly cloudy / windy

Name: Tony W Signature _____

Other Parties Present During Monitoring Event: N/A

Date DEQ notified: N/A

Reason for Monitoring Event: Routine/Significant Event
Describe significant event (e.g., 3.4 inches of rain in 24 hours, Flood stage of 18 feet RID, Flood stage of 24 feet, RID, Selsmic event 6.0 or greater):

N/A

This form documents field observations of the remedial actions. Areas of concern and sample locations, if collected, are identified on the attached site maps. Photo-documentation of each remedial action area is also attached.

Remedial Action Area B Soil Cap (Includes soil from Remedial Action Area A1)

General condition of soil cap: _____

Cracks, Settlement? YES NO
Location: _____

Maintenance required? YES NO

Holes, Penetrations? YES NO
Location: _____

Maintenance required? YES NO

Animal intrusion, burrowing? YES NO
Location: _____

Maintenance required? YES NO

Erosion, rills?

YES NO

Location: _____

Maintenance required?

YES NO

Subsurface soil (>3 feet) exposed?

YES NO

Location: _____

Maintenance required?

YES NO

Ponding?

YES NO

Location: _____

Maintenance required?

YES NO

Dead/dying vegetation?

YES NO

Location: _____

Maintenance required?

YES NO

Do any observations warrant urgent attention?

YES NO

If yes, describe: _____

Are contingency measures necessary?

YES NO

If yes, describe: _____

UPLAND MONITORING AND MAINTENANCE FORM
Remedial Action Sub-Areas A2-1, A2-2, and A2-3

Date and Time: 11-20-12 11:15 Weather: Partial cloudy/windy

Name: Tony W. Signature: _____

Other Parties Present During Monitoring Event: N/A

Date DEQ notified: N/A

Reason for Monitoring Event: Routine / 0.5 inch of rain in 24 hours / Significant Event
 Describe significant event (e.g., 3.4 inches of rain in 24 hours, Flood stage of 18 feet RID, Flood stage of 24 feet, RID, Seismic event 6.0 or greater): 2.10" Rain on 11-19-12

This form documents field observations of the remedial actions. Areas of concern and sample locations, if collected, are identified on the attached site maps. Photo-documentation of each remedial action area is also attached.

REMEDIAL ACTION SUB-AREAS A2-1 and A2-3 - EROSION CONTROL BMPS

Remedial Action Sub-Area	BMP	Describe Condition of BMP	Maintenance/Action Needed
A2-1	Drainage Berms	Good condition	Yes <input type="checkbox"/> No <input checked="" type="checkbox"/>
	Biofilter Bags	Good condition	Yes <input type="checkbox"/> No <input checked="" type="checkbox"/>
	Gravel	Good condition	Yes <input type="checkbox"/> No <input checked="" type="checkbox"/>
	Ditches	Good condition	Yes <input type="checkbox"/> No <input checked="" type="checkbox"/>
	Vegetation	Good condition	Yes <input type="checkbox"/> No <input checked="" type="checkbox"/>
	Ecology Block	Good condition	Yes <input type="checkbox"/> No <input checked="" type="checkbox"/>
A2-3	Gravel	Good condition	Yes <input type="checkbox"/> No <input checked="" type="checkbox"/>
	Filter Trench	Good condition	Yes <input type="checkbox"/> No <input checked="" type="checkbox"/>

Do any observations warrant urgent attention? YES NO
If yes, describe: Small area of Standing Water No major
Problem

Are contingency measures necessary? YES NO
If yes, describe: _____

REMEDIAL ACTION SUB-AREA A2-2

General condition of slope Good Condition

Are there signs of erosion on the slope (e.g., sloughing, rivelets, or rills)? YES NO
If yes, provide description: _____

Are the ecology blocks intact and aligned? YES NO
If no, provide description: Assume they are Due to high water cannot
view blocks

Are there signs of erosion adjacent to the ecology blocks? YES NO
If yes, provide description: _____

Do any observations warrant urgent attention? YES NO
If yes, describe: _____

Are contingency measures necessary? YES NO
If yes, describe: _____

UPLAND MONITORING AND MAINTENANCE FORM
Remedial Action Area B

Date and Time: 13:30 11-19-12 Weather: Rainy / Windy

Name: Tony Signature: _____

Other Parties Present During Monitoring Event: N/A

Date DEQ notified: N/A

Reason for Monitoring Event: Routine/Significant Event
Describe significant event (e.g., 3.4 inches of rain in 24 hours, Flood stage of 18 feet RID, Flood stage of 24 feet, RID, Seismic event 6.0 or greater):
N/A

This form documents field observations of the remedial actions. Areas of concern and sample locations, if collected, are identified on the attached site maps. Photo-documentation of each remedial action area is also attached.

Remedial Action Area B Soil Cap (Includes soil from Remedial Action Area A1)

General condition of soil cap: _____

Cracks, Settlement? YES NO
Location: _____

Maintenance required? YES NO

Holes, Penetrations? YES NO
Location: _____

Maintenance required? YES NO

Animal Intrusion, burrowing? YES NO
Location: _____

Maintenance required? YES NO

Erosion, rills? YES NO

Location: _____

Maintenance required? YES NO

Subsurface soil (>3 feet) exposed? YES NO

Location: _____

Maintenance required? YES NO

Ponding? YES NO

Location: _____

Maintenance required? YES NO

Dead/dying vegetation? YES NO

Location: _____

Maintenance required? YES NO

Do any observations warrant urgent attention? YES NO

If yes, describe: _____

Are contingency measures necessary? YES NO

If yes, describe: _____

UPLAND MONITORING AND MAINTENANCE FORM
Remedial Action Sub-Areas A2-1, A2-2, and A2-3

Date and Time: 13:30 11-19-12 Weather: 12pming / windy

Name: Tony W. Signature: _____

Other Parties Present During Monitoring Event: N/a

Date DEQ notified: N/a

Reason for Monitoring Event: Routine 0.5 Inch of rain in 24 hours/Significant Event
 Describe significant event (e.g., 3.4 inches of rain in 24 hours, Flood stage of 18 feet RID, Flood stage of 24 feet, RID, Seismic event 6.0 or greater): 0.54" Rain 11-18-12

This form documents field observations of the remedial actions. Areas of concern and sample locations, if collected, are identified on the attached site maps. Photo-documentation of each remedial action area is also attached.

REMEDIAL ACTION SUB-AREAS A2-1 and A2-3 - EROSION CONTROL BMPS

Remedial Action Sub-Area	BMP	Describe Condition of BMP	Maintenance/Action Needed
A2-1	Drainage Berms	Good Conditions	Yes <input type="checkbox"/> No <input checked="" type="checkbox"/>
	Biofilter Bags	Good Conditions	Yes <input type="checkbox"/> No <input checked="" type="checkbox"/>
	Gravel	Good Conditions	Yes <input type="checkbox"/> No <input checked="" type="checkbox"/>
	Ditches	Good Condition	Yes <input type="checkbox"/> No <input checked="" type="checkbox"/>
	Vegetation	Good	Yes <input type="checkbox"/> No <input checked="" type="checkbox"/>
A2-3	Ecology Block	Good Condition	Yes <input type="checkbox"/> No <input checked="" type="checkbox"/>
	Gravel	Good Condition	Yes <input type="checkbox"/> No <input checked="" type="checkbox"/>
	Filter Trench	Good Condition	Yes <input type="checkbox"/> No <input checked="" type="checkbox"/>

Do any observations warrant urgent attention? YES NO
If yes, describe: Standing water in a small area. Need
little more gravel over the spot. Not water problem

Are contingency measures necessary? YES NO
If yes, describe:

REMEDIAL ACTION SUB-AREA A2-2

General condition of slope Good Condition

Are there signs of erosion on the slope (e.g., sloughing, rivelets, or rills)? YES NO
If yes, provide description:

Are the ecology blocks intact and aligned? YES NO
If no, provide description: High water causes no visibility of blocks. Assuming
in good condition

Are there signs of erosion adjacent to the ecology blocks? YES NO
If yes, provide description:

Do any observations warrant urgent attention? YES NO
If yes, describe:

Are contingency measures necessary? YES NO
If yes, describe:

UPLAND MONITORING AND MAINTENANCE FORM
Remedial Action Area B

Date and Time: 11-13-12 12:30 P.M. Weather: Partial Cloudy

Name: Tony W. Signature _____

Other Parties Present During Monitoring Event: N/A

Date DEQ notified: N/A

Reason for Monitoring Event: Routine/Significant Event
Describe significant event (e.g., 3.4 inches of rain in 24 hours, Flood stage of 18 feet RID, Flood stage of 24 feet, RID, Seismic event 6.0 or greater): _____

This form documents field observations of the remedial actions. Areas of concern and sample locations, if collected, are identified on the attached site maps. Photo-documentation of each remedial action area is also attached.

Remedial Action Area B Soil Cap (Includes soil from Remedial Action Area A1)

General condition of soil cap: _____

Cracks, Settlement? YES NO
Location: _____

Maintenance required? YES NO

Holes, Penetrations? YES NO
Location: _____

Maintenance required? YES NO

Animal Intrusion, burrowing? YES NO
Location: _____

Maintenance required? YES NO

Erosion, rills? YES NO

Location: _____

Maintenance required? YES NO

Subsurface soil (>3 feet) exposed? YES NO

Location: _____

Maintenance required? YES NO

Ponding? YES NO

Location: _____

Maintenance required? YES NO

Dead/dying vegetation? YES NO

Location: _____

Maintenance required? YES NO

Do any observations warrant urgent attention? YES NO

If yes, describe: _____

Are contingency measures necessary? YES NO

If yes, describe: _____

UPLAND MONITORING AND MAINTENANCE FORM
Remedial Action Sub-Areas A2-1, A2-2, and A2-3

Date and Time: 11-13-12 12:30 P.M. Weather: Partial cloudy

Name: Tony W. Signature _____

Other Parties Present During Monitoring Event: N/A

Date DEQ notified: N/A

Reason for Monitoring Event: Routine 0.5 inch of rain in 24 hours/Significant Event

Describe significant event (e.g., 3.4 inches of rain in 24 hours, Flood stage of 18 feet RID, Flood stage of 24 feet, RID, Seismic event 6.0 or greater): 0.60" Rainfall 11-12-12

This form documents field observations of the remedial actions. Areas of concern and sample locations, if collected, are identified on the attached site maps. Photo-documentation of each remedial action area is also attached.

REMEDIAL ACTION SUB-AREAS A2-1 and A2-3 - EROSION CONTROL BMPS

Remedial Action Sub-Area	BMP	Describe Condition of BMP	Maintenance/Action Needed
A2-1	Drainage Berms	EXcellent	Yes <input type="checkbox"/> No <input checked="" type="checkbox"/>
	Biofilter Bags	EXcellent	Yes <input type="checkbox"/> No <input checked="" type="checkbox"/>
	Gravel	EXcellent	Yes <input type="checkbox"/> No <input checked="" type="checkbox"/>
	Ditches	EXcellent	Yes <input type="checkbox"/> No <input checked="" type="checkbox"/>
	Vegetation	EXcellent	Yes <input type="checkbox"/> No <input checked="" type="checkbox"/>
	Ecology Block	EXcellent	Yes <input type="checkbox"/> No <input checked="" type="checkbox"/>
A2-3	Gravel	EXcellent	Yes <input type="checkbox"/> No <input checked="" type="checkbox"/>
	Filter Trench	EXcellent	Yes <input type="checkbox"/> No <input checked="" type="checkbox"/>

Do any observations warrant urgent attention? YES NO

If yes, describe: _____

Are contingency measures necessary? YES NO

If yes, describe: _____

REMEDIAL ACTION SUB-AREA A2-2

General condition of slope Very good

Are there signs of erosion on the slope (e.g., sloughing, rivelets, or rills)? YES NO

If yes, provide description: _____

Are the ecology blocks intact and aligned? YES NO

If no, provide description: High water, assume they are

Are there signs of erosion adjacent to the ecology blocks? YES NO

If yes, provide description: _____

Do any observations warrant urgent attention? YES NO

If yes, describe: _____

Are contingency measures necessary? YES NO

If yes, describe: _____

UPLAND MONITORING AND MAINTENANCE FORM
Remedial Action Area B

Date and Time: 11-12-12 11:50 A.m. Weather: Cloudy

Name: Tony W. Signature

Other Parties Present During Monitoring Event: n/a

Date DEQ notified: n/a

Reason for Monitoring Event: Routine/Significant Event

Describe significant event (e.g., 3.4 inches of rain in 24 hours, Flood stage of 18 feet RID, Flood stage of 24 feet, RID, Seismic event 6.0 or greater):

This form documents field observations of the remedial actions. Areas of concern and sample locations, if collected, are identified on the attached site maps. Photo-documentation of each remedial action area is also attached.

Remedial Action Area B Soil Cap (Includes soil from Remedial Action Area A1)

General condition of soil cap:

Cracks, Settlement? YES NO

Location:

Maintenance required? YES NO

Holes, Penetrations? YES NO

Location:

Maintenance required? YES NO

Animal Intrusion, burrowing? YES NO

Location:

Maintenance required? YES NO

Erosion, rills? YES NO

Location: _____

Maintenance required? YES NO

Subsurface soil (>3 feet) exposed? YES NO

Location: _____

Maintenance required? YES NO

Ponding? YES NO

Location: _____

Maintenance required? YES NO

Dead/dying vegetation? YES NO

Location: _____

Maintenance required? YES NO

Do any observations warrant urgent attention? YES NO

If yes, describe: _____

Are contingency measures necessary? YES NO

If yes, describe: _____

UPLAND MONITORING AND MAINTENANCE FORM
Remedial Action Sub-Areas A2-1, A2-2, and A2-3

Date and Time: 11-12-12 11:50 A.M. Weather: cloudy

Name: _____ Signature _____

Other Parties Present During Monitoring Event: None

Date DEQ notified: None

Reason for Monitoring Event: Routine/0.5 inch of rain in 24 hours/Significant Event
 Describe significant event (e.g., 3.4 inches of rain in 24 hours, Flood stage of 18 feet RID, Flood stage of 24 feet, RID, Seismic event 6.0 or greater): Rain event 0.55" Rain Fall Nov. 11th, 2012

This form documents field observations of the remedial actions. Areas of concern and sample locations, if collected, are identified on the attached site maps. Photo-documentation of each remedial action area is also attached.

REMEDIAL ACTION SUB-AREAS A2-1 and A2-3 - EROSION CONTROL BMPS

Remedial Action Sub-Area	BMP	Describe Condition of BMP	Maintenance/Action Needed
A2-1	Drainage Berms	Excellent Condition	Yes <input type="checkbox"/> No <input checked="" type="checkbox"/>
	Biofilter Bags	EXCELLENT Condition	Yes <input type="checkbox"/> No <input checked="" type="checkbox"/>
	Gravel	EXCELLENT Condition	Yes <input type="checkbox"/> No <input checked="" type="checkbox"/>
	Ditches	EXCELLENT Condition	Yes <input type="checkbox"/> No <input checked="" type="checkbox"/>
	Vegetation	EXCELLENT Condition	Yes <input type="checkbox"/> No <input checked="" type="checkbox"/>
	Ecology Block	EXCELLENT Condition	Yes <input type="checkbox"/> No <input checked="" type="checkbox"/>
A2-3	Gravel	EXCELLENT Condition	Yes <input type="checkbox"/> No <input checked="" type="checkbox"/>
	Filter Trench	Good condition	Yes <input type="checkbox"/> No <input checked="" type="checkbox"/>

Do any observations warrant urgent attention? YES NO
If yes, describe: Little bit of standing water. Nothing major.
Near future need to lay more gravel over the area.

Are contingency measures necessary? YES NO
If yes, describe: _____

REMEDIAL ACTION SUB-AREA A2-2

General condition of slope Very Good

Are there signs of erosion on the slope (e.g., sloughing, rivelets, or rills)? YES NO
If yes, provide description: _____

Are the ecology blocks intact and aligned? YES NO
If no, provide description: Tide is too high to see blocks. Assuming that they are

Are there signs of erosion adjacent to the ecology blocks? YES NO
If yes, provide description: _____

Do any observations warrant urgent attention? YES NO
If yes, describe: _____

Are contingency measures necessary? YES NO
If yes, describe: _____

**UPLAND MONITORING AND MAINTENANCE FORM
Remedial Action Area B**

Date and Time: Oct 29th, 2012 12:45 Weather: Partly cloudy / windy

Name: Tony W. Signature _____

Other Parties Present During Monitoring Event: _____ N/A

Date DEQ notified: _____ N/A

Reason for Monitoring Event: Routine/Significant Event
Describe significant event (e.g., 3.4 inches of rain in 24 hours, Flood stage of 18 feet RID, Flood stage of 24 feet, RID, Seismic event 6.0 or greater):

_____ N/A

This form documents field observations of the remedial actions. Areas of concern and sample locations, if collected, are identified on the attached site maps. Photo-documentation of each remedial action area is also attached.

Remedial Action Area B Soil Cap (Includes soil from Remedial Action Area A1)

General condition of soil cap: _____ N/A

Cracks, Settlement? YES NO
Location: _____

Maintenance required? YES NO N/A

Holes, Penetrations? YES NO
Location: _____

Maintenance required? YES NO

Animal intrusion, burrowing? YES NO
Location: _____

Maintenance required? YES NO

Erosion, rills? YES NO

Location: _____

Maintenance required? YES NO

Subsurface soil (>3 feet) exposed? YES NO

Location: _____

Maintenance required? YES NO

Ponding? YES NO

Location: _____

N/A

Maintenance required? YES NO

Dead/dying vegetation? YES NO

Location: _____

Maintenance required? YES NO

Do any observations warrant urgent attention? YES NO

If yes, describe: _____

Are contingency measures necessary? YES NO

If yes, describe: _____

UPLAND MONITORING AND MAINTENANCE FORM
Remedial Action Sub-Areas A2-1, A2-2, and A2-3

Date and Time: Oct 29th, 2012 12:45 Weather: Partly cloudy / windy

Name: Tony W. Signature _____

Other Parties Present During Monitoring Event: n/a

Date DEQ notified: n/a

Reason for Monitoring Event: Routine/0.5 inch of rain in 24 hours/Significant Event
 Describe significant event (e.g., 3.4 inches of rain in 24 hours, Flood stage of 18 feet RID, Flood stage of 24 feet, RID, Seismic event 6.0 or greater): 0.85 Rainfall Oct 28th

This form documents field observations of the remedial actions. Areas of concern and sample locations, if collected, are identified on the attached site maps. Photo-documentation of each remedial action area is also attached.

REMEDIAL ACTION SUB-AREAS A2-1 and A2-3 - EROSION CONTROL BMPS

Remedial Action Sub-Area	BMP	Describe Condition of BMP	Maintenance/Action Needed
A2-1	Drainage Berms	not excellent condition	Yes <input type="checkbox"/> No <input checked="" type="checkbox"/>
	Biofilter Bags	excellent condition	Yes <input type="checkbox"/> No <input checked="" type="checkbox"/>
	Gravel	excellent condition	Yes <input type="checkbox"/> No <input checked="" type="checkbox"/>
	Ditches	excellent condition	Yes <input type="checkbox"/> No <input checked="" type="checkbox"/>
	Vegetation	Very good	Yes <input type="checkbox"/> No <input checked="" type="checkbox"/>
A2-3	Ecology Block	excellent condition	Yes <input type="checkbox"/> No <input checked="" type="checkbox"/>
	Gravel	Very good	Yes <input type="checkbox"/> No <input checked="" type="checkbox"/>
	Filter Trench	Very good	Yes <input type="checkbox"/> No <input checked="" type="checkbox"/>

Do any observations warrant urgent attention? YES NO

If yes, describe: _____

Are contingency measures necessary? YES NO

If yes, describe: _____

REMEDIAL ACTION SUB-AREA A2-2

General condition of slope Very good slope. Could not view
Blocks Due to high water.

Are there signs of erosion on the slope (e.g., sloughing, rivelets, or rills)? YES NO

If yes, provide description: _____

Are the ecology blocks intact and aligned? YES NO

If no, provide description: _____
Could not view Due to high water

Are there signs of erosion adjacent to the ecology blocks? YES NO

If yes, provide description: _____

Do any observations warrant urgent attention? YES NO

If yes, describe: _____

Are contingency measures necessary? YES NO

If yes, describe: _____

UPLAND MONITORING AND MAINTENANCE FORM
Remedial Action Area B

Date and Time: Oct 16th, 2012 2:00 p.m. Weather: Sunny

Name: Tony W. Signature _____

Other Parties Present During Monitoring Event: n/a

Date DEQ notified: n/a

Reason for Monitoring Event: Routine/Significant Event
Describe significant event (e.g., 3.4 inches of rain in 24 hours, Flood stage of 18 feet RID, Flood stage of 24 feet, RID, Seismic event 6.0 or greater): _____

This form documents field observations of the remedial actions. Areas of concern and sample locations, if collected, are identified on the attached site maps. Photo-documentation of each remedial action area is also attached.

Remedial Action Area B Soil Cap (Includes soil from Remedial Action Area A1)

General condition of soil cap: _____

Cracks, Settlement? YES NO
Location: _____

Maintenance required? YES NO N/A

Holes, Penetrations? YES NO
Location: _____

Maintenance required? YES NO

Animal Intrusion, burrowing? YES NO
Location: _____

Maintenance required? YES NO

Erosion, rills? YES NO

Location: _____

Maintenance required? YES NO

Subsurface soil (>3 feet) exposed? YES NO

Location: _____

Maintenance required? YES NO N/A

Ponding? YES NO

Location: _____

Maintenance required? YES NO

Dead/dying vegetation? YES NO

Location: _____

Maintenance required? YES NO

Do any observations warrant urgent attention? YES NO

If yes, describe: _____

Are contingency measures necessary? YES NO

If yes, describe: _____

UPLAND MONITORING AND MAINTENANCE FORM
Remedial Action Sub-Areas A2-1, A2-2, and A2-3

Date and Time: Oct 16th, 2012 2:00 P.M. Weather: Sunny

Name: Tony W. Signature

Other Parties Present During Monitoring Event: N/A

Date DEQ notified: N/A

Reason for Monitoring Event: Routine/0.5 inch of rain in 24 hours/Significant Event
 Describe significant event (e.g., 3.4 inches of rain in 24 hours, Flood stage of 18 feet RID, Flood stage of 24 feet, RID, Seismic event 6.0 or greater):

0.72" Rainfall 24 hr Period
(Oct 15, 2012)

This form documents field observations of the remedial actions. Areas of concern and sample locations, if collected, are identified on the attached site maps. Photo-documentation of each remedial action area is also attached.

REMEDIAL ACTION SUB-AREAS A2-1 and A2-3 - EROSION CONTROL BMPS

Remedial Action Sub-Area	BMP	Describe Condition of BMP	Maintenance/Action Needed
A2-1	Drainage Berms	Excellent Condition	Yes <input type="checkbox"/> No <input checked="" type="checkbox"/>
	Biofilter Bags	Excellent Condition	Yes <input type="checkbox"/> No <input checked="" type="checkbox"/>
	Gravel	Excellent Condition	Yes <input type="checkbox"/> No <input checked="" type="checkbox"/>
	Ditches	Excellent Condition	Yes <input type="checkbox"/> No <input checked="" type="checkbox"/>
	Vegetation	No Vegetation Visible	Yes <input type="checkbox"/> No <input checked="" type="checkbox"/>
	Ecology Block	Excellent Condition	Yes <input type="checkbox"/> No <input checked="" type="checkbox"/>
A2-3	Gravel	Very good Condition	Yes <input type="checkbox"/> No <input checked="" type="checkbox"/>
	Filter Trench	Very good Condition	Yes <input type="checkbox"/> No <input checked="" type="checkbox"/>

Do any observations warrant urgent attention? YES NO

If yes, describe: N/A

Are contingency measures necessary? YES NO

If yes, describe: N/A

REMEDIAL ACTION SUB-AREA A2-2

General condition of slope Visual Appearance of Condition is in good Condition

Are there signs of erosion on the slope (e.g., sloughing, rivelets, or rills)? YES NO

If yes, provide description: N/A

Are the ecology blocks intact and aligned? YES NO

If no, provide description: Visual inspection in very good condition

Are there signs of erosion adjacent to the ecology blocks? YES NO

If yes, provide description: N/A

Do any observations warrant urgent attention? YES NO

If yes, describe: _____

Are contingency measures necessary? YES NO

If yes, describe: _____

UPLAND MONITORING AND MAINTENANCE FORM
Remedial Action Area B

Date and Time: 10-15-12

Weather: Cloudy, misting

Name: Tony W.

Signature

Other Parties Present During Monitoring Event:

Date DEQ notified:

Reason for Monitoring Event: Routine/Significant Event

Describe significant event (e.g., 3.4 inches of rain in 24 hours, Flood stage of 18 feet RID, Flood stage of 24 feet, RID, Seismic event 6.0 or greater):

This form documents field observations of the remedial actions. Areas of concern and sample locations, if collected, are identified on the attached site maps. Photo-documentation of each remedial action area is also attached.

Remedial Action Area B Soil Cap (Includes soil from Remedial Action Area A1)

General condition of soil cap:

N/A

Cracks, Settlement?

YES NO

Location:

Maintenance required?

YES NO

Holes, Penetrations?

YES NO

Location:

Maintenance required?

YES NO

Animal Intrusion, burrowing?

YES NO

Location:

Maintenance required?

YES NO

Erosion, rills? YES NO

Location: _____

Maintenance required? YES NO

Subsurface soil (>3 feet) exposed? YES NO

Location: _____

Maintenance required? YES NO

Ponding? YES NO

Location: _____

N/A

Maintenance required? YES NO

Dead/dying vegetation? YES NO

Location: _____

Maintenance required? YES NO

Do any observations warrant urgent attention? YES NO

If yes, describe: _____

Are contingency measures necessary? YES NO

If yes, describe: _____

UPLAND MONITORING AND MAINTENANCE FORM
Remedial Action Sub-Areas A2-1, A2-2, and A2-3

Date and Time: 10-15-12 Weather: cloudy, misting

Name: Tony W. Signature _____

Other Parties Present During Monitoring Event: _____

Date DEQ notified: _____

Reason for Monitoring Event: Routine/0.5 inch of rain in 24 hours/Significant Event
 Describe significant event (e.g., 3.4 inches of rain in 24 hours, Flood stage of 18 feet RID, Flood stage of 24 feet, RID, Seismic event 6.0 or greater): Oct 12th (0.94), Oct 14th (0.54) business was closed Sunday after to do testing after Oct 12th (24hrs)

This form documents field observations of the remedial actions. Areas of concern and sample locations, if collected, are identified on the attached site maps. Photo-documentation of each remedial action area is also attached.

REMEDIAL ACTION SUB-AREAS A2-1 and A2-3 - EROSION CONTROL BMPS

Remedial Action Sub-Area	BMP	Describe Condition of BMP	Maintenance/Action Needed
A2-1	Drainage Berms	EXCELLENT	Yes <input type="checkbox"/> No <input checked="" type="checkbox"/>
	Biofilter Bags	EXCELLENT	Yes <input type="checkbox"/> No <input checked="" type="checkbox"/>
	Gravel	EXCELLENT	Yes <input type="checkbox"/> No <input checked="" type="checkbox"/>
	Ditches	EXCELLENT	Yes <input type="checkbox"/> No <input checked="" type="checkbox"/>
	Vegetation	Little Vegetation	Yes <input type="checkbox"/> No <input checked="" type="checkbox"/>
	Ecology Block	EXCELLENT	Yes <input type="checkbox"/> No <input checked="" type="checkbox"/>
A2-3	Gravel	Very good	Yes <input type="checkbox"/> No <input checked="" type="checkbox"/>
	Filter Trench	Very good	Yes <input type="checkbox"/> No <input checked="" type="checkbox"/>

Do any observations warrant urgent attention? YES NO
If yes, describe: There is A few Pools of standing water in small Areas on the gravel but not causing An issue

Are contingency measures necessary? YES NO
If yes, describe:

REMEDIAL ACTION SUB-AREA A2-2

General condition of slope Very good

Are there signs of erosion on the slope (e.g., sloughing, rivelets, or rills)? YES NO
If yes, provide description:

Are the ecology blocks intact and aligned? YES NO
If no, provide description:

Are there signs of erosion adjacent to the ecology blocks? YES NO
If yes, provide description:

Do any observations warrant urgent attention? YES NO
If yes, describe:

Are contingency measures necessary? YES NO
If yes, describe:

Erosion, rills? YES NO

Location: _____

Maintenance required? YES NO

Subsurface soil (>3 feet) exposed? YES NO

Location: _____

Maintenance required? YES NO

Ponding? YES NO

Location: _____

Maintenance required? YES NO

Dead/dying vegetation? YES NO

Location: _____

Maintenance required? YES NO

Do any observations warrant urgent attention? YES NO

If yes, describe: _____

Are contingency measures necessary? YES NO

If yes, describe: _____

**UPLAND MONITORING AND MAINTENANCE FORM
Remedial Action Area B**

Date and Time: April 8, 2013 13:15 Weather: Sunny

Name: Tony W. Signature _____

Other Parties Present During Monitoring Event: N/A

Date DEQ notified: N/A

Reason for Monitoring Event: Routine/Significant Event
Describe significant event (e.g., 3.4 inches of rain in 24 hours, Flood stage of 18 feet RID, Flood stage of 24 feet, RID, Seismic event 6.0 or greater): _____

This form documents field observations of the remedial actions. Areas of concern and sample locations, if collected, are identified on the attached site maps. Photo-documentation of each remedial action area is also attached.

Remedial Action Area B Soil Cap (Includes soil from Remedial Action Area A1)

General condition of soil cap: _____

Cracks, Settlement? YES NO
Location: _____

Maintenance required? YES NO

Holes, Penetrations? YES NO
Location: _____

Maintenance required? YES NO

Animal Intrusion, burrowing? YES NO
Location: _____

Maintenance required? YES NO

Erosion, rills? YES NO

Location: _____

Maintenance required? YES NO

Subsurface soil (>3 feet) exposed? YES NO

Location: _____

Maintenance required? YES NO

Ponding? YES NO

Location: _____

Maintenance required? YES NO

Dead/dying vegetation? YES NO

Location: _____

Maintenance required? YES NO

Do any observations warrant urgent attention? YES NO

If yes, describe: _____

Are contingency measures necessary? YES NO

If yes, describe: _____

UPLAND MONITORING AND MAINTENANCE FORM
Remedial Action Sub-Areas A2-1, A2-2, and A2-3

Date and Time: April 8th, 2013 13:15 Weather: Sunny

Name: Tony W. Signature _____

Other Parties Present During Monitoring Event: N/A

Date DEQ notified: N/A

Reason for Monitoring Event: Routine/0.5 inch of rain in 24 hours/Significant Event
 Describe significant event (e.g., 3.4 inches of rain in 24 hours, Flood stage of 18 feet RID, Flood stage of 24 feet, RID, Seismic event 6.0 or greater):
April 6th Rainfall - (0.68")

This form documents field observations of the remedial actions. Areas of concern and sample locations, if collected, are identified on the attached site maps. Photo-documentation of each remedial action area is also attached.

REMEDIAL ACTION SUB-AREAS A2-1 and A2-3 - EROSION CONTROL BMPS

Remedial Action Sub-Area	BMP	Describe Condition of BMP	Maintenance/Action Needed
A2-1	Drainage Berms	Excellent	Yes <input type="checkbox"/> No <input checked="" type="checkbox"/>
	Biofilter Bags	Excellent	Yes <input type="checkbox"/> No <input checked="" type="checkbox"/>
	Gravel	Excellent	Yes <input type="checkbox"/> No <input checked="" type="checkbox"/>
	Ditches	Excellent	Yes <input type="checkbox"/> No <input checked="" type="checkbox"/>
	Vegetation	Excellent	Yes <input type="checkbox"/> No <input checked="" type="checkbox"/>
	Ecology Block	Excellent	Yes <input type="checkbox"/> No <input checked="" type="checkbox"/>
A2-3	Gravel	Excellent	Yes <input type="checkbox"/> No <input checked="" type="checkbox"/>
	Filter Trench	Excellent	Yes <input type="checkbox"/> No <input checked="" type="checkbox"/>

Do any observations warrant urgent attention?

YES NO

If yes, describe:

Are contingency measures necessary?

YES NO

If yes, describe:

REMEDIAL ACTION SUB-AREA A2-2

General condition of slope

Very good

Are there signs of erosion on the slope (e.g., sloughing, rivelets, or rills)?

YES NO

If yes, provide description:

Are the ecology blocks intact and aligned?

YES NO

If no, provide description:

Water blocks are not visible due to high water
Assume blocks intact

Are there signs of erosion adjacent to the ecology blocks?

YES NO

If yes, provide description:

Do any observations warrant urgent attention?

YES NO

If yes, describe:

Are contingency measures necessary?

YES NO

If yes, describe:

**UPLAND MONITORING AND MAINTENANCE FORM
Remedial Action Area B**

Date and Time: MARCH 20th, 09:30 2013 Weather: Rain

Name: Tony W. Signature _____

Other Parties Present During Monitoring Event: N/A

Date DEQ notified: N/A

Reason for Monitoring Event: Routine/Significant Event
Describe significant event (e.g., 3.4 Inches of rain in 24 hours, Flood stage of 18 feet RID, Flood stage of 24 feet, RID, Seismic event 6.0 or greater): _____

This form documents field observations of the remedial actions. Areas of concern and sample locations, if collected, are identified on the attached site maps. Photo-documentation of each remedial action area is also attached.

Remedial Action Area B Soil Cap (Includes soil from Remedial Action Area A1)

General condition of soil cap: _____

Cracks, Settlement? YES NO
Location: _____

Maintenance required? YES NO

Holes, Penetrations? YES NO
Location: _____

Maintenance required? YES NO

Animal Intrusion, burrowing? YES NO
Location: _____

Maintenance required? YES NO

Erosion, rills? YES NO

Location: _____

Maintenance required? YES NO

Subsurface soil (>3 feet) exposed? YES NO

Location: _____

Maintenance required? YES NO

Ponding? YES NO

Location: _____

Maintenance required? YES NO

Dead/dying vegetation? YES NO

Location: _____

Maintenance required? YES NO

Do any observations warrant urgent attention? YES NO

If yes, describe: _____

Are contingency measures necessary? YES NO

If yes, describe: _____

UPLAND MONITORING AND MAINTENANCE FORM
Remedial Action Sub-Areas A2-1, A2-2, and A2-3

Date and Time: MARCH 20th, 2013 09:00 Weather: Rain

Name: Tony W. Signature _____

Other Parties Present During Monitoring Event: N/A

Date DEQ notified: N/A

Reason for Monitoring Event: Routine/0.5 Inch of rain in 24 hours/Significant Event
 Describe significant event (e.g., 3.4 inches of rain in 24 hours, Flood stage of 18 feet RID, Flood stage of 24 feet, RID, Seismic event 6.0 or greater): _____

MARCH 19th Rainfall (0.62")

This form documents field observations of the remedial actions. Areas of concern and sample locations, if collected, are identified on the attached site maps. Photo-documentation of each remedial action area is also attached.

REMEDIAL ACTION SUB-AREAS A2-1 and A2-3 - EROSION CONTROL BMPS

Remedial Action Sub-Area	BMP	Describe Condition of BMP	Maintenance/Action Needed
A2-1	Drainage Berms	EXCELLENT	Yes <input type="checkbox"/> No <input checked="" type="checkbox"/>
	Biofilter Bags	EXCELLENT	Yes <input type="checkbox"/> No <input checked="" type="checkbox"/>
	Gravel	EXCELLENT	Yes <input type="checkbox"/> No <input checked="" type="checkbox"/>
	Ditches	EXCELLENT	Yes <input type="checkbox"/> No <input checked="" type="checkbox"/>
	Vegetation	EXCELLENT	Yes <input type="checkbox"/> No <input checked="" type="checkbox"/>
	Ecology Block	EXCELLENT	Yes <input type="checkbox"/> No <input checked="" type="checkbox"/>
A2-3	Gravel	EXCELLENT	Yes <input type="checkbox"/> No <input checked="" type="checkbox"/>
	Filter Trench	EXCELLENT	Yes <input type="checkbox"/> No <input checked="" type="checkbox"/>

Do any observations warrant urgent attention?

YES NO

If yes, describe:

Are contingency measures necessary?

YES NO

If yes, describe:

REMEDIAL ACTION SUB-AREA A2-2

General condition of slope

Very good

Are there signs of erosion on the slope (e.g., sloughing, rivelets, or rills)?

YES NO

If yes, provide description:

Are the ecology blocks intact and aligned?

YES NO

If no, provide description:

Blocks are under water due to high tide. Assume they are intact.

Are there signs of erosion adjacent to the ecology blocks?

YES NO

If yes, provide description:

Do any observations warrant urgent attention?

YES NO

If yes, describe:

Are contingency measures necessary?

YES NO

If yes, describe:

**UPLAND MONITORING AND MAINTENANCE FORM
Remedial Action Area B**

Date and Time: Jan 29th, 2013 11:00 Weather: Cloudy/misting

Name: Tony Signature: _____

Other Parties Present During Monitoring Event: N/A

Date DEQ notified: N/A

Reason for Monitoring Event: Routine/Significant Event
Describe significant event (e.g., 3.4 inches of rain in 24 hours, Flood stage of 18 feet RID, Flood stage of 24 feet, RID, Seismic event 6.0 or greater): _____

N/A

This form documents field observations of the remedial actions. Areas of concern and sample locations, if collected, are identified on the attached site maps. Photo-documentation of each remedial action area is also attached.

Remedial Action Area B Soil Cap (Includes soil from Remedial Action Area A1)

General condition of soil cap: _____

Cracks, Settlement? YES NO
Location: _____

N/A

Maintenance required? YES NO

Holes, Penetrations? YES NO
Location: _____

Maintenance required? YES NO

Animal intrusion, burrowing? YES NO
Location: _____

Maintenance required? YES NO

Erosion, rills?

YES NO

Location: _____

Maintenance required?

YES NO

Subsurface soil (>3 feet) exposed?

YES NO

Location: _____

Maintenance required?

YES NO

Ponding?

YES NO

Location: _____

Maintenance required?

YES NO

Dead/dying vegetation?

YES NO

Location: _____

Maintenance required?

YES NO

Do any observations warrant urgent attention?

YES NO

If yes, describe: _____

Are contingency measures necessary?

YES NO

If yes, describe: _____

UPLAND MONITORING AND MAINTENANCE FORM
Remedial Action Sub-Areas A2-1, A2-2, and A2-3

Date and Time: 1-29-13 11:00 Weather: Cloudy / misting

Name: Tony Signature _____

Other Parties Present During Monitoring Event: n/a

Date DEQ notified: n/a

Reason for Monitoring Event: Routine 0.5 inch of rain in 24 hours / Significant Event
 Describe significant event (e.g., 3.4 inches of rain in 24 hours, Flood stage of 18 feet RID, Flood stage of 24 feet, RID, Seismic event 6.0 or greater):
.55" Rainfall 1-28-13

This form documents field observations of the remedial actions. Areas of concern and sample locations, if collected, are identified on the attached site maps. Photo-documentation of each remedial action area is also attached.

REMEDIAL ACTION SUB-AREAS A2-1 and A2-3 - EROSION CONTROL BMPS

Remedial Action Sub-Area	BMP	Describe Condition of BMP	Maintenance/Action Needed
A2-1	Drainage Berms	Very good	Yes <input type="checkbox"/> No <input checked="" type="checkbox"/>
	Biofilter Bags	Very good	Yes <input type="checkbox"/> No <input checked="" type="checkbox"/>
	Gravel	Very good	Yes <input type="checkbox"/> No <input checked="" type="checkbox"/>
	Ditches	Very good	Yes <input type="checkbox"/> No <input checked="" type="checkbox"/>
	Vegetation	Very good	Yes <input type="checkbox"/> No <input checked="" type="checkbox"/>
A2-3	Ecology Block	Very good	Yes <input type="checkbox"/> No <input checked="" type="checkbox"/>
	Gravel	Very good	Yes <input type="checkbox"/> No <input checked="" type="checkbox"/>
	Filter Trench	Very good	Yes <input type="checkbox"/> No <input checked="" type="checkbox"/>

Do any observations warrant urgent attention?

YES NO

If yes, describe: _____

Are contingency measures necessary?

YES NO

If yes, describe: _____

REMEDIAL ACTION SUB-AREA A2-2

General condition of slope

Very good

Are there signs of erosion on the slope (e.g., sloughing, rivelets, or rills)?

YES NO

If yes, provide description: _____

Are the ecology blocks intact and aligned?

YES NO

If no, provide description:

Assume they are. Tide is high and blocks are not visible

Are there signs of erosion adjacent to the ecology blocks?

YES NO

If yes, provide description: _____

Do any observations warrant urgent attention?

YES NO

If yes, describe: _____

Are contingency measures necessary?

YES NO

If yes, describe: _____

UPLAND MONITORING AND MAINTENANCE FORM
Remedial Action Area B

Date and Time: Dec 26th, 10:30 Weather: Partial cloudy

Name: Tony Signature: N/A

Other Parties Present During Monitoring Event: _____

Date DEQ notified: N/A

Reason for Monitoring Event: Routine/Significant Event
Describe significant event (e.g., 3.4 inches of rain in 24 hours, Flood stage of 18 feet RID, Flood stage of 24 feet, RID, Seismic event 6.0 or greater):
N/A

This form documents field observations of the remedial actions. Areas of concern and sample locations, if collected, are identified on the attached site maps. Photo-documentation of each remedial action area is also attached.

Remedial Action Area B Soil Cap (Includes soil from Remedial Action Area A1)

General condition of soil cap: _____

Cracks, Settlement? YES NO
Location: _____

Maintenance required? YES NO

Holes, Penetrations? YES NO
Location: _____

Maintenance required? YES NO

Animal Intrusion, burrowing? YES NO
Location: _____

Maintenance required? YES NO

Erosion, rills? YES NO

Location: _____

Maintenance required? YES NO

Subsurface soil (>3 feet) exposed? YES NO

Location: _____

Maintenance required? YES NO

Ponding? YES NO

Location: _____

Maintenance required? YES NO

Dead/dying vegetation? YES NO

Location: _____

Maintenance required? YES NO

Do any observations warrant urgent attention? YES NO

If yes, describe: _____

Are contingency measures necessary? YES NO

If yes, describe: _____

UPLAND MONITORING AND MAINTENANCE FORM
Remedial Action Sub-Areas A2-1, A2-2, and A2-3

Date and Time: 12-26-12 10:30 Weather: Partial cloudy

Name: Tony Signature _____

Other Parties Present During Monitoring Event: N/A

Date DEQ notified: N/A

Reason for Monitoring Event: Routine 0.5 inch of rain in 24 hours / Significant Event
 Describe significant event (e.g., 3.4 inches of rain in 24 hours, Flood stage of 18 feet RID, Flood stage of 24 feet, RID, Seismic event 6.0 or greater): 0.90" Rainfall 12-25-12

This form documents field observations of the remedial actions. Areas of concern and sample locations, if collected, are identified on the attached site maps. Photo-documentation of each remedial action area is also attached.

REMEDIAL ACTION SUB-AREAS A2-1 and A2-3 - EROSION CONTROL BMPS

Remedial Action Sub-Area	BMP	Describe Condition of BMP	Maintenance/Action Needed
A2-1	Drainage Berms	EXcellent	Yes <input type="checkbox"/> No <input checked="" type="checkbox"/>
	Biofilter Bags	EXcellent	Yes <input type="checkbox"/> No <input checked="" type="checkbox"/>
	Gravel	EXcellent	Yes <input type="checkbox"/> No <input checked="" type="checkbox"/>
	Ditches	EXcellent	Yes <input type="checkbox"/> No <input checked="" type="checkbox"/>
	Vegetation	EXcellent	Yes <input type="checkbox"/> No <input checked="" type="checkbox"/>
	Ecology Block	EXcellent	Yes <input type="checkbox"/> No <input checked="" type="checkbox"/>
A2-3	Gravel	EXcellent	Yes <input type="checkbox"/> No <input checked="" type="checkbox"/>
	Filter Trench	EXcellent	Yes <input type="checkbox"/> No <input checked="" type="checkbox"/>

Do any observations warrant urgent attention? YES NO
If yes, describe: _____

Are contingency measures necessary? YES NO
If yes, describe: _____

REMEDIAL ACTION SUB-AREA A2-2

General condition of slope Excellent Condition

Are there signs of erosion on the slope (e.g., sloughing, rivelets, or rills)? YES NO
If yes, provide description: _____

Are the ecology blocks intact and aligned? YES NO
If no, provide description: _____

Blocks Under water due to high water

Are there signs of erosion adjacent to the ecology blocks? YES NO
If yes, provide description: _____

Do any observations warrant urgent attention? YES NO
If yes, describe: _____

Are contingency measures necessary? YES NO
If yes, describe: _____

**UPLAND MONITORING AND MAINTENANCE FORM
Remedial Action Area B**

Date and Time: 12-21-12 14:00 Weather: Raining

Name: _____ Signature _____

Other Parties Present During Monitoring Event: _____

Date DEQ notified: N/A

Reason for Monitoring Event: Routine/Significant Event
Describe significant event (e.g., 3.4 inches of rain in 24 hours, Flood stage of 18 feet RID, Flood stage of 24 feet, RID, Seismic event 6.0 or greater): _____

This form documents field observations of the remedial actions. Areas of concern and sample locations, if collected, are identified on the attached site maps. Photo-documentation of each remedial action area is also attached.

Remedial Action Area B Soil Cap (Includes soil from Remedial Action Area A1)

General condition of soil cap: _____

Cracks, Settlement? YES NO
Location: _____

Maintenance required? YES NO

Holes, Penetrations? YES NO
Location: _____

Maintenance required? YES NO

Animal Intrusion, burrowing? YES NO
Location: _____

Maintenance required? YES NO

Erosion, rills? YES NO

Location: _____

Maintenance required? YES NO

Subsurface soil (>3 feet) exposed? YES NO

Location: _____

Maintenance required? YES NO

Ponding? YES NO

Location: _____

Maintenance required? YES NO

Dead/dying vegetation? YES NO

Location: _____

Maintenance required? YES NO

Do any observations warrant urgent attention? YES NO

If yes, describe: _____

Are contingency measures necessary? YES NO

If yes, describe: _____

UPLAND MONITORING AND MAINTENANCE FORM
Remedial Action Sub-Areas A2-1, A2-2, and A2-3

Date and Time: 12-21-12 14:00 Weather: Raining

Name: _____ Signature _____

Other Parties Present During Monitoring Event: na

Date DEQ notified: na

Reason for Monitoring Event: Routine 0.5 inch of rain in 24 hours / Significant Event
 Describe significant event (e.g., 3.4 inches of rain in 24 hours, Flood stage of 18 feet RID, Flood stage of 24 feet, RID, Seismic event 6.0 or greater): 1.15" (12-20-12)

This form documents field observations of the remedial actions. Areas of concern and sample locations, if collected, are identified on the attached site maps. Photo-documentation of each remedial action area is also attached.

REMEDIAL ACTION SUB-AREAS A2-1 and A2-3 - EROSION CONTROL BMPS

Remedial Action Sub-Area	BMP	Describe Condition of BMP	Maintenance/Action Needed
A2-1	Drainage Berms	Excellent	Yes <input type="checkbox"/> No <input checked="" type="checkbox"/>
	Biofilter Bags	Excellent	Yes <input type="checkbox"/> No <input checked="" type="checkbox"/>
	Gravel	Excellent	Yes <input type="checkbox"/> No <input checked="" type="checkbox"/>
	Ditches	Excellent	Yes <input type="checkbox"/> No <input checked="" type="checkbox"/>
	Vegetation	Excellent	Yes <input type="checkbox"/> No <input checked="" type="checkbox"/>
	Ecology Block	Excellent	Yes <input type="checkbox"/> No <input checked="" type="checkbox"/>
A2-3	Gravel	Excellent	Yes <input type="checkbox"/> No <input checked="" type="checkbox"/>
	Filter Trench	Excellent	Yes <input type="checkbox"/> No <input checked="" type="checkbox"/>

Do any observations warrant urgent attention?

YES

NO

If yes, describe:

Are contingency measures necessary?

YES

NO

If yes, describe:

REMEDIAL ACTION SUB-AREA A2-2

General condition of slope

Very good condition

Are there signs of erosion on the slope (e.g., sloughing, rivelets, or rills)?

YES

NO

If yes, provide description:

Are the ecology blocks intact and aligned?

YES

NO

If no, provide description:

Assuming the blocks are intact. The blocks are under water due to high tide

Are there signs of erosion adjacent to the ecology blocks?

YES

NO

If yes, provide description:

Do any observations warrant urgent attention?

YES

NO

If yes, describe:

Are contingency measures necessary?

YES

NO

If yes, describe:

UPLAND MONITORING AND MAINTENANCE FORM
Remedial Action Area B

Date and Time: 12-17-12 2:00 P.M. Weather: Cloudy Tide: 9.0'

Name: Tony Signature _____

Other Parties Present During Monitoring Event: n/a

Date DEQ notified: N/A

Reason for Monitoring Event: Routine/Significant Event
Describe significant event (e.g., 3.4 inches of rain in 24 hours, Flood stage of 18 feet RID, Flood stage of 24 feet, RID, Seismic event 6.0 or greater):
N/A

This form documents field observations of the remedial actions. Areas of concern and sample locations, if collected, are identified on the attached site maps. Photo-documentation of each remedial action area is also attached.

Remedial Action Area B Soil Cap (includes soil from Remedial Action Area A1)

General condition of soil cap: _____

Cracks, Settlement? YES NO
Location: _____

Maintenance required? YES NO

Holes, Penetrations? YES NO
Location: _____

Maintenance required? YES NO

Animal Intrusion, burrowing? YES NO
Location: _____

Maintenance required? YES NO

Erosion, rills? YES NO

Location: _____

Maintenance required? YES NO

Subsurface soil (>3 feet) exposed? YES NO

Location: _____

Maintenance required? YES NO

Ponding? YES NO

Location: _____

Maintenance required? YES NO

Dead/dying vegetation? YES NO

Location: _____

Maintenance required? YES NO

Do any observations warrant urgent attention? YES NO

If yes, describe: _____

Are contingency measures necessary? YES NO

If yes, describe: _____

UPLAND MONITORING AND MAINTENANCE FORM
Remedial Action Sub-Areas A2-1, A2-2, and A2-3

Date and Time: 12-17-12 2:00 P.m. Weather: Cloudy Tide 9.0'

Name: Tony W. Signature _____

Other Parties Present During Monitoring Event: N/A

Date DEQ notified: N/A

Reason for Monitoring Event: Routine 0.5 inch of rain in 24 hours / Significant Event
 Describe significant event (e.g., 3.4 inches of rain in 24 hours, Flood stage of 18 feet RID, Flood stage of 24 feet, RID, Seismic event 6.0 or greater): ~~0.82"~~ Rainfall 12-16-12 0.82"

This form documents field observations of the remedial actions. Areas of concern and sample locations, if collected, are identified on the attached site maps. Photo-documentation of each remedial action area is also attached.

REMEDIAL ACTION SUB-AREAS A2-1 and A2-3 - EROSION CONTROL BMPS

Remedial Action Sub-Area	BMP	Describe Condition of BMP	Maintenance/Action Needed
A2-1	Drainage Berms	Excellent	Yes <input type="checkbox"/> No <input checked="" type="checkbox"/>
	Biofilter Bags	Excellent	Yes <input type="checkbox"/> No <input checked="" type="checkbox"/>
	Gravel	Excellent	Yes <input type="checkbox"/> No <input checked="" type="checkbox"/>
	Ditches	Excellent	Yes <input type="checkbox"/> No <input checked="" type="checkbox"/>
	Vegetation	Excellent	Yes <input type="checkbox"/> No <input checked="" type="checkbox"/>
	Ecology Block	Excellent	Yes <input type="checkbox"/> No <input checked="" type="checkbox"/>
A2-3	Gravel	Excellent	Yes <input type="checkbox"/> No <input checked="" type="checkbox"/>
	Filter Trench	Excellent	Yes <input type="checkbox"/> No <input checked="" type="checkbox"/>

Do any observations warrant urgent attention? YES NO

If yes, describe: _____

Are contingency measures necessary? YES NO

If yes, describe: _____

REMEDIAL ACTION SUB-AREA A2-2

General condition of slope Excellent Condition

Are there signs of erosion on the slope (e.g., sloughing, rivelets, or rills)? YES NO

If yes, provide description: _____

Are the ecology blocks intact and aligned? YES NO

If no, provide description: They are under water due to high water

Are there signs of erosion adjacent to the ecology blocks? YES NO

If yes, provide description: _____

Do any observations warrant urgent attention? YES NO

If yes, describe: _____

Are contingency measures necessary? YES NO

If yes, describe: _____

UPLAND MONITORING AND MAINTENANCE FORM
Remedial Action Area B

Date and Time: Dec 5th, 2012 14:30 Weather: ☉ Partial Sunny

Name: Tony O. Signature _____

Other Parties Present During Monitoring Event: N/A

Date DEQ notified: N/A

Reason for Monitoring Event: Routine/Significant Event
Describe significant event (e.g., 3.4 inches of rain in 24 hours, Flood stage of 18 feet RID, Flood stage of 24 feet, RID, Seismic event 6.0 or greater): _____

This form documents field observations of the remedial actions. Areas of concern and sample locations, if collected, are identified on the attached site maps. Photo-documentation of each remedial action area is also attached.

Remedial Action Area B Soil Cap (Includes soil from Remedial Action Area A1)

General condition of soil cap: _____

Cracks, Settlement? YES NO
Location: _____

Maintenance required? YES NO

Holes, Penetrations? YES NO
Location: _____

Maintenance required? YES NO

Animal intrusion, burrowing? YES NO
Location: _____

Maintenance required? YES NO

Erosion, rills? YES NO

Location: _____

Maintenance required? YES NO

Subsurface soil (>3 feet) exposed? YES NO

Location: _____

Maintenance required? YES NO

Ponding? YES NO

Location: _____

Maintenance required? YES NO

Dead/dying vegetation? YES NO

Location: _____

Maintenance required? YES NO

Do any observations warrant urgent attention? YES NO

If yes, describe: _____

Are contingency measures necessary? YES NO

If yes, describe: _____

UPLAND MONITORING AND MAINTENANCE FORM
Remedial Action Sub-Areas A2-1, A2-2, and A2-3

Date and Time: Dec 5th, 2012 14:30 Weather: Partial ~~Sunny~~

Name: Tony W. Signature: _____

Other Parties Present During Monitoring Event: N/A

Date DEQ notified: N/A

Reason for Monitoring Event: Routine (0.5 Inch of rain in 24 hours) / Significant Event
 Describe significant event (e.g., 3.4 inches of rain in 24 hours, Flood stage of 18 feet RID, Flood stage of 24 feet, RID, Seismic event 6.0 or greater): Dec 4th (1.19" Rainfall)

This form documents field observations of the remedial actions. Areas of concern and sample locations, if collected, are identified on the attached site maps. Photo-documentation of each remedial action area is also attached.

REMEDIAL ACTION SUB-AREAS A2-1 and A2-3 - EROSION CONTROL BMPs

Remedial Action Sub-Area	BMP	Describe Condition of BMP	Maintenance/Action Needed
A2-1	Drainage Berms	Excellent Condition	Yes <input type="checkbox"/> No <input checked="" type="checkbox"/>
	Biofilter Bags	Excellent Condition	Yes <input type="checkbox"/> No <input checked="" type="checkbox"/>
	Gravel	Excellent Condition	Yes <input type="checkbox"/> No <input checked="" type="checkbox"/>
	Ditches	Excellent Condition	Yes <input type="checkbox"/> No <input checked="" type="checkbox"/>
	Vegetation	Excellent Condition	Yes <input type="checkbox"/> No <input checked="" type="checkbox"/>
	Ecology Block	Excellent Condition	Yes <input type="checkbox"/> No <input checked="" type="checkbox"/>
A2-3	Gravel	Excellent Condition	Yes <input type="checkbox"/> No <input checked="" type="checkbox"/>
	Filter Trench	Excellent Condition	Yes <input type="checkbox"/> No <input checked="" type="checkbox"/>

Do any observations warrant urgent attention? YES NO
If yes, describe: _____

Are contingency measures necessary? YES NO
If yes, describe: _____

REMEDIAL ACTION SUB-AREA A2-2

General condition of slope Very good Condition Partial Area
Under water due to high tide

Are there signs of erosion on the slope (e.g., sloughing, rivelets, or rills)? YES NO
If yes, provide description: _____

Are the ecology blocks intact and aligned? YES NO
If no, provide description: Blocks are under water due to high tide.
I assume they are ~~not~~ intact and holding tight.

Are there signs of erosion adjacent to the ecology blocks? YES NO
If yes, provide description: _____

Do any observations warrant urgent attention? YES NO
If yes, describe: _____

Are contingency measures necessary? YES NO
If yes, describe: _____

UPLAND MONITORING AND MAINTENANCE FORM
Remedial Action Area B

Date and Time: Dec 3, 2012 11:00 Am Weather: Partial cloudy / windy

Name: Tony W. Signature _____

Other Parties Present During Monitoring Event: N/A

Date DEQ notified: N/A

Reason for Monitoring Event: Routine/Significant Event
Describe significant event (e.g., 3.4 inches of rain in 24 hours, Flood stage of 18 feet RID, Flood stage of 24 feet, RID, Selsmic event 6.0 or greater):

This form documents field observations of the remedial actions. Areas of concern and sample locations, if collected, are identified on the attached site maps. Photo-documentation of each remedial action area is also attached.

Remedial Action Area B Soil Cap (Includes soil from Remedial Action Area A1)

General condition of soil cap: _____

Cracks, Settlement? YES NO
Location: _____

Maintenance required? YES NO

Holes, Penetrations? YES NO
Location: _____

Maintenance required? YES NO

Animal intrusion, burrowing? YES NO
Location: _____

Maintenance required? YES NO

Erosion, rills? YES NO

Location: _____

Maintenance required? YES NO

Subsurface soil (>3 feet) exposed? YES NO

Location: _____

Maintenance required? YES NO

Ponding? YES NO

Location: _____

Maintenance required? YES NO

Dead/dying vegetation? YES NO

Location: _____

Maintenance required? YES NO

Do any observations warrant urgent attention? YES NO

If yes, describe: _____

Are contingency measures necessary? YES NO

If yes, describe: _____

UPLAND MONITORING AND MAINTENANCE FORM
Remedial Action Sub-Areas A2-1, A2-2, and A2-3

Date and Time: Dec 3, 2012 11:00 Am. Weather: Partial Cloudy / Windy

Name: Tony W. Signature _____

Other Parties Present During Monitoring Event: N/A

Date DEQ notified: N/A

Reason for Monitoring Event: Routine (0.5 inch of rain in 24 hours) / Significant Event
 Describe significant event (e.g., 3.4 inches of rain in 24 hours, Flood stage of 18 feet RID, Flood stage of 24 feet, RID, Seismic event 6.0 or greater): ~~XXXX~~
Nov 30, (0.64" Rain) Dec 1 (0.75" Rain). The office was closed the 1st & 2nd Dec so couldn't do testing until the 3rd.

This form documents field observations of the remedial actions. Areas of concern and sample locations, if collected, are identified on the attached site maps. Photo-documentation of each remedial action area is also attached.

REMEDIAL ACTION SUB-AREAS A2-1 and A2-3 - EROSION CONTROL BMPS

Remedial Action Sub-Area	BMP	Describe Condition of BMP	Maintenance/Action Needed
A2-1	Drainage Berms	Excellent Condition	Yes <input type="checkbox"/> No <input checked="" type="checkbox"/>
	Biofilter Bags	Excellent Condition	Yes <input type="checkbox"/> No <input checked="" type="checkbox"/>
	Gravel	Excellent Condition	Yes <input type="checkbox"/> No <input checked="" type="checkbox"/>
	Ditches	Excellent Condition	Yes <input type="checkbox"/> No <input checked="" type="checkbox"/>
	Vegetation	Excellent Condition	Yes <input type="checkbox"/> No <input checked="" type="checkbox"/>
	Ecology Block	Excellent Condition	Yes <input type="checkbox"/> No <input checked="" type="checkbox"/>
A2-3	Gravel	Excellent Condition	Yes <input type="checkbox"/> No <input checked="" type="checkbox"/>
	Filter Trench	Excellent Condition	Yes <input type="checkbox"/> No <input checked="" type="checkbox"/>

Do any observations warrant urgent attention?

YES

NO

If yes, describe: _____

Are contingency measures necessary?

YES

NO

If yes, describe: _____

REMEDIAL ACTION SUB-AREA A2-2

General condition of slope

Very good condition. Due to high water most of slope is under water.

Are there signs of erosion on the slope (e.g., sloughing, rivelets, or rills)?

YES

NO

If yes, provide description: Most of slope is under water but the exposed area is holding firm.

Are the ecology blocks intact and aligned?

YES

NO

If no, provide description: They are under water. But I assume they are still in place and holding firm.

Are there signs of erosion adjacent to the ecology blocks?

YES

NO

If yes, provide description: _____

Do any observations warrant urgent attention?

YES

NO

If yes, describe: _____

Are contingency measures necessary?

YES

NO

If yes, describe: _____

UPLAND MONITORING AND MAINTENANCE FORM
Remedial Action Area B

Date and Time: 11-21-12 13:30 Weather: Partial Cloudy

Name: Tony W. Signature _____

Other Parties Present During Monitoring Event: n/a

Date DEQ notified: n/a

Reason for Monitoring Event: Routine/Significant Event

Describe significant event (e.g., 3.4 inches of rain in 24 hours, Flood stage of 18 feet RID, Flood stage of 24 feet, RID, Seismic event 6.0 or greater):

This form documents field observations of the remedial actions. Areas of concern and sample locations, if collected, are identified on the attached site maps. Photo-documentation of each remedial action area is also attached.

Remedial Action Area B Soil Cap (Includes soil from Remedial Action Area A1)

General condition of soil cap: _____

Cracks, Settlement? YES NO
Location: _____

Maintenance required? YES NO

Holes, Penetrations? YES NO
Location: _____

Maintenance required? YES NO

Animal intrusion, burrowing? YES NO
Location: _____

Maintenance required? YES NO

Appendix B



REMEDIAL ACTION SUB-AREA A2-1. FACING NORTH



REMEDIAL ACTION SUB-AREA A2-1. ECOLOGY BLOCKS AND BIOFILTER BAGS, FACING SOUTH





REMEDIAL ACTION SUB-AREA A2-2. FACING NORTH



REMEDIAL ACTION SUB-AREA A2-2. DURING LOW WATER. FACING EAST





REMEDIAL ACTION SUB-AREA A2-3. FACING SOUTHEAST



REMEDIAL ACTION SUB-AREA A2-3. FACING NORTHWEST





REMEDIAL ACTION SUB-AREA B. FACING SOUTHWEST



REMEDIAL ACTION SUB-AREA B. FACING NORTHWEST





REMEDIAL ACTION SUB-AREA A2-2. DURING LOW WATER. FACING EAST



REMEDIAL ACTION SUB-AREA A2-2. DURING LOW WATER. FACING SOUTH

