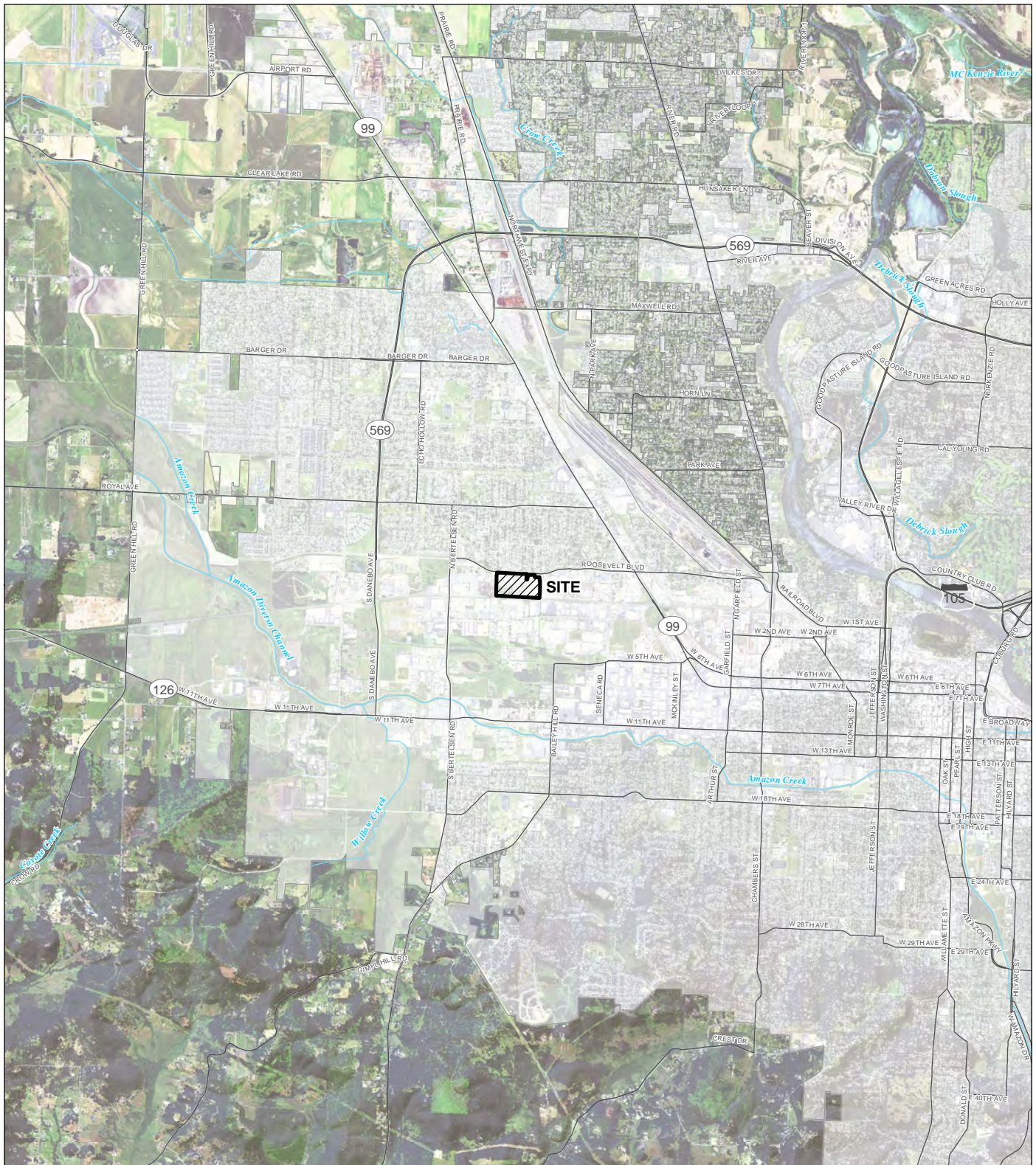


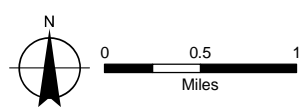
APPENDIX B
FIGURES
J.H. Baxter Facility
Eugene, Oregon

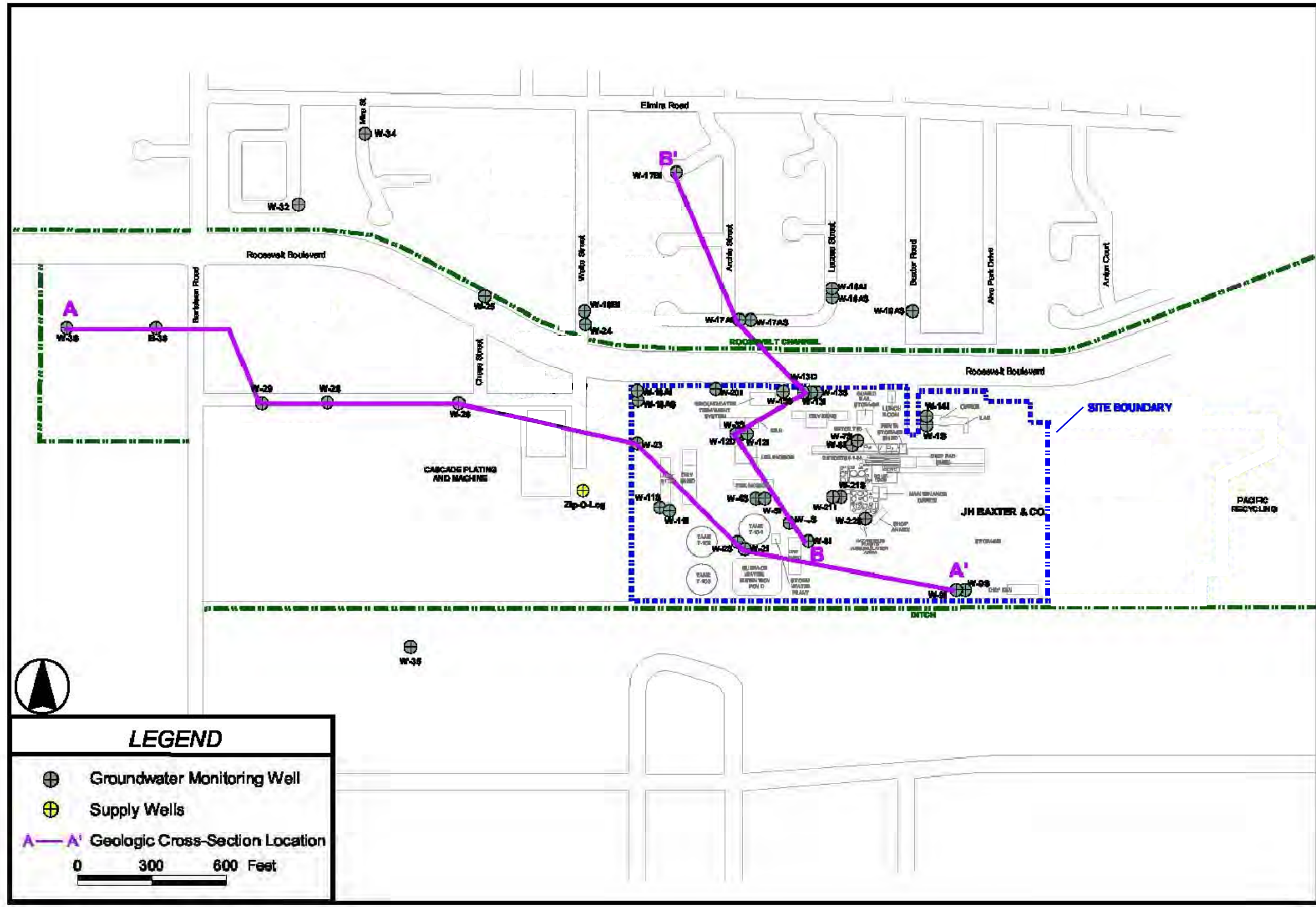


- LEGEND**
- Eugene City Limits
 - Major Roads
 - Watercourses




MAP NOTES:
 Date: January 15, 2016
 Data Sources: Air photo taken on June 11, 2014 by the USDA

FIGURE 1
 Site Vicinity Map
 J.H. Baxter Wood Treating Facility
 Eugene, Oregon





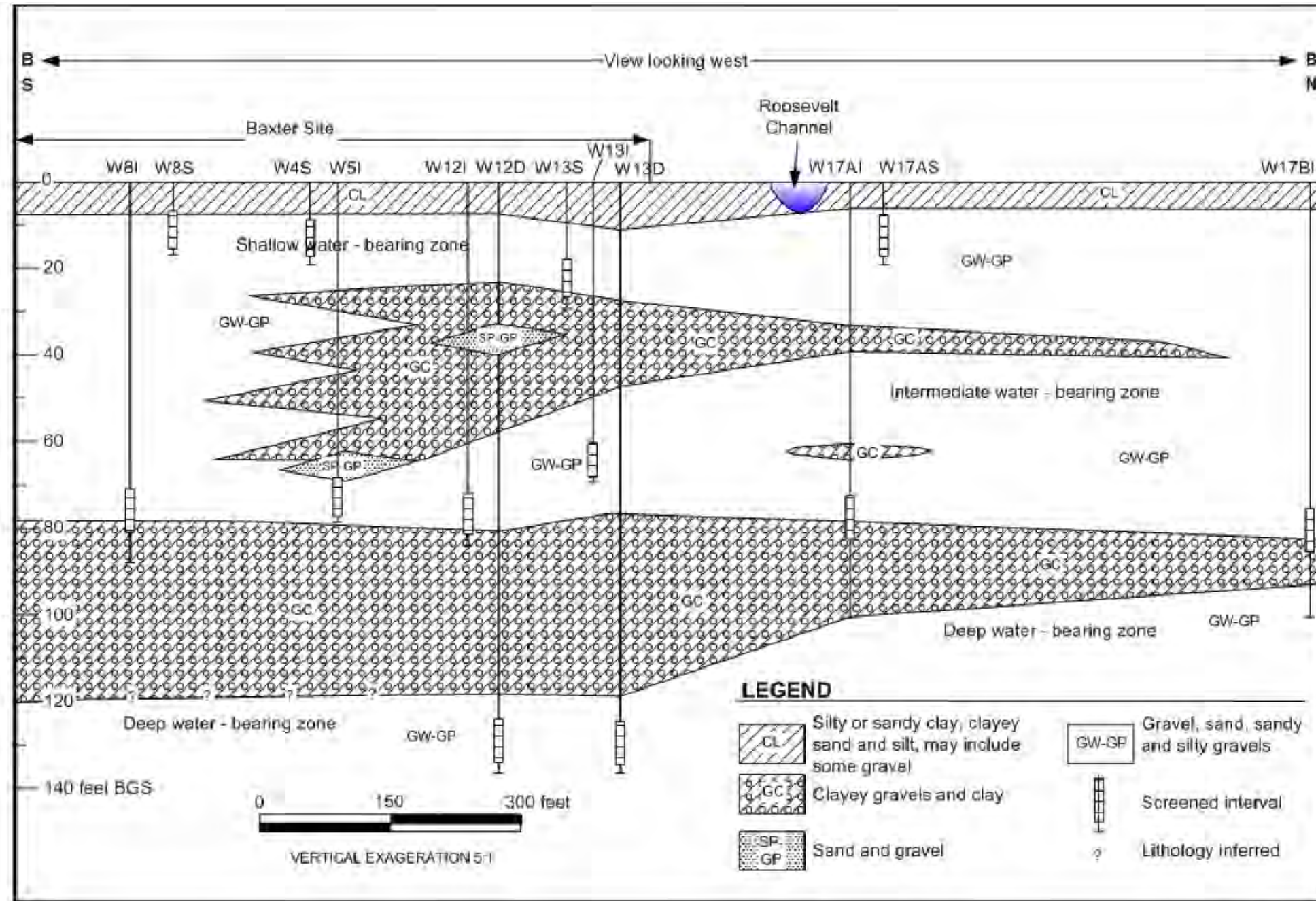
LEGEND

-  Groundwater Monitoring Well
-  Supply Wells
-  Geologic Cross-Section Location

0 300 600 Feet

FILENAME: S:\CAD\PREMIER\JH BAXTER - EUGENE, OREGON\Series 4-and-5-

 EUGENE, OREGON PROJECT NO. 211088.00.005	 EarthCon Consultants, Inc. 333 SW FIFTH AVENUE, SUITE 505, PORTLAND, OR 97204	GROUNDWATER MONITORING WELL LOCATIONS
DRAWN: DCN	CHECKED: JSB	DATE: 08/08/2011
		FIGURE: 2



FILENAME: S:\CAD\PREMISES\BAXTER-EUGENE-OREGON\Sinks 4.rvt



EUGENE, OREGON

PROJECT NO. 211088.00.005



EarthCon Consultants, Inc.
333 SW FIFTH AVENUE, SUITE 505, PORTLAND, OR 97204

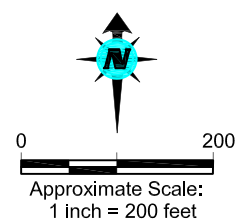
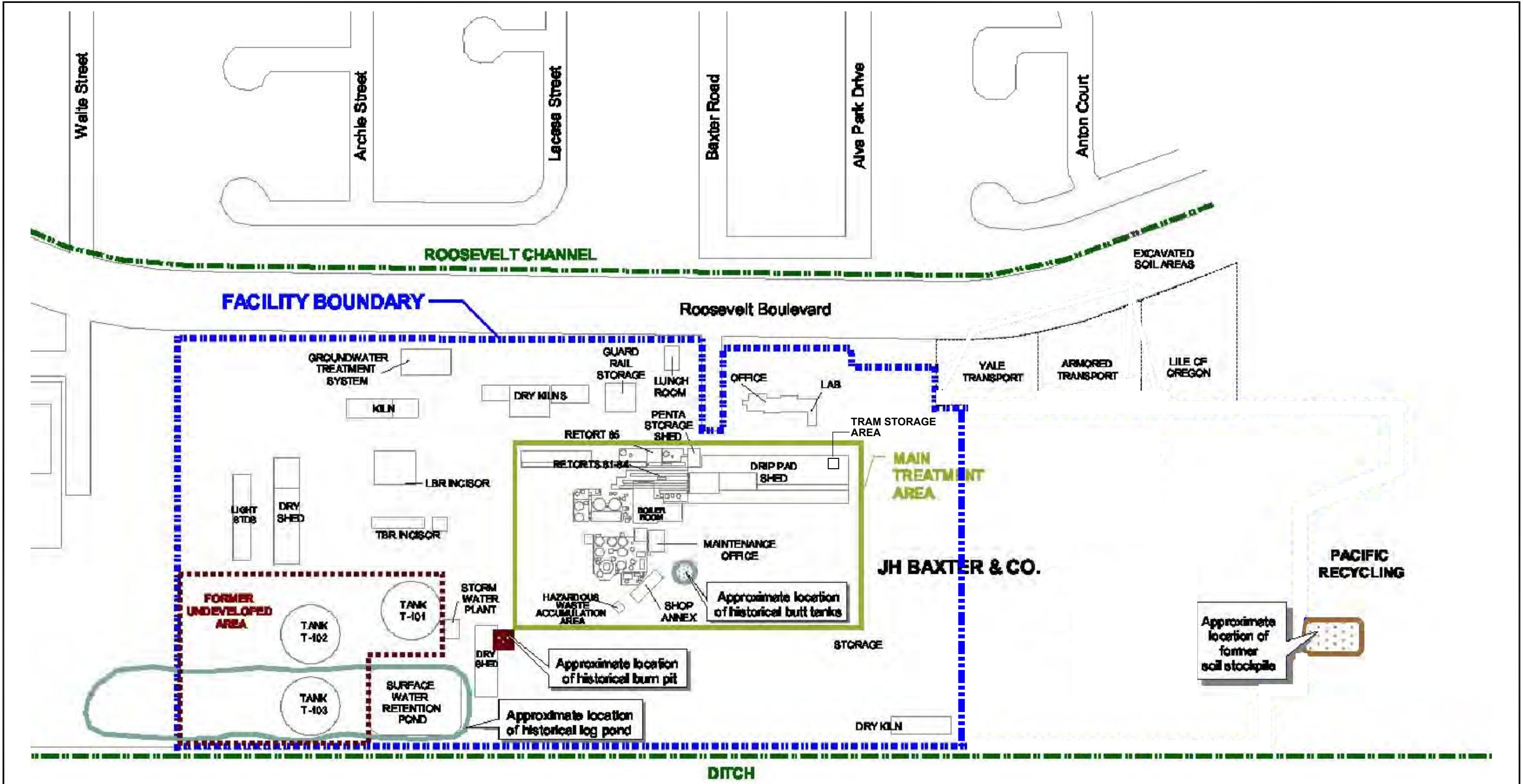
GENERALIZED SOUTH - NORTH
GEOLOGIC CROSS SECTION (B-B')

DRAWN: DCN

CHECKED: JSB

DATE: 08/08/2011

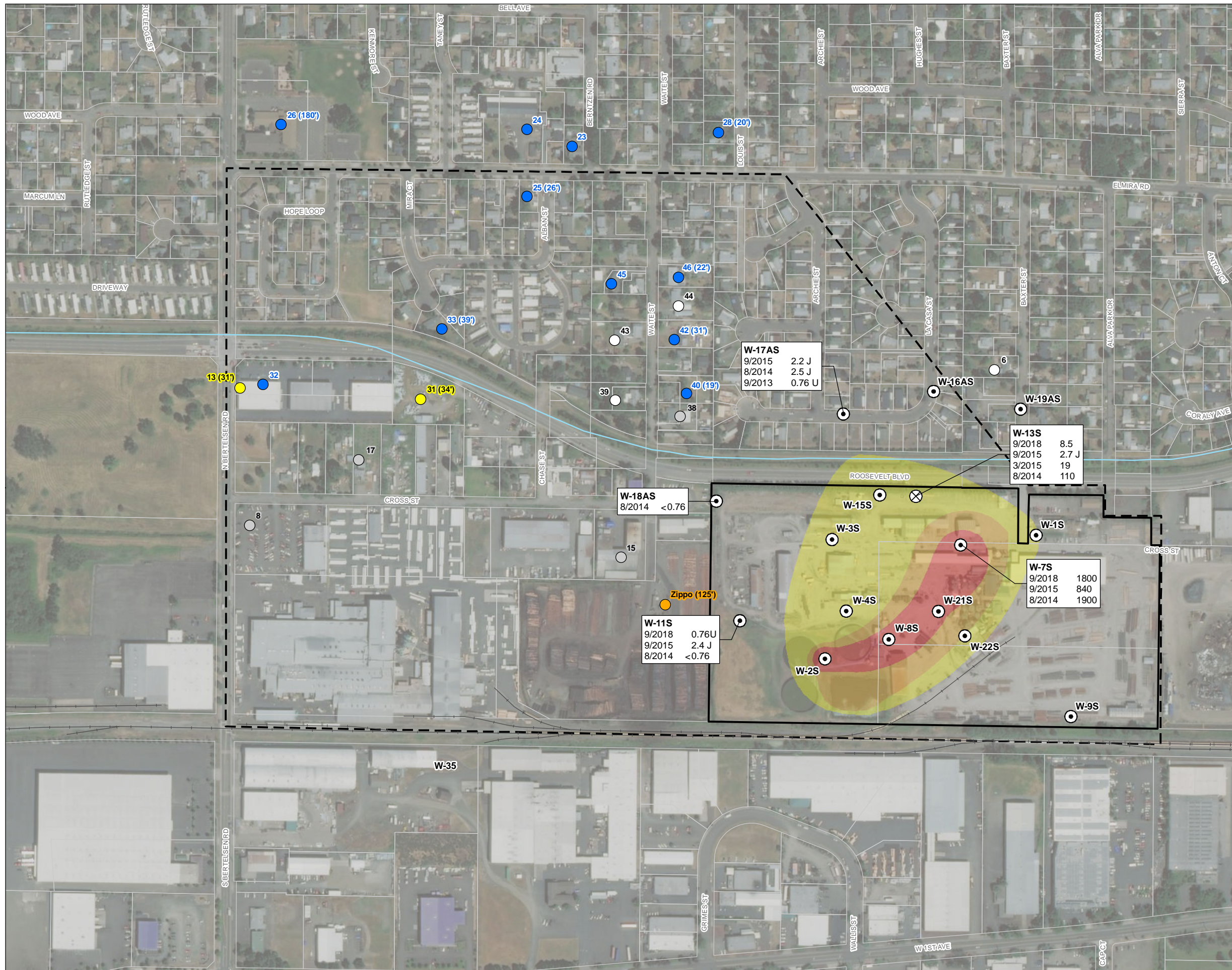
FIGURE: 4



FILENAME: S:\CAD\PREMIER\JH BAXTER - EUGENE, OREGON\SHRHS 4-and-5-

 EUGENE, OREGON PROJECT NO. 211088.00.005	 EarthCon Consultants, Inc. 333 SW FIFTH AVENUE, SUITE 505, PORTLAND, OR 97204	HISTORICAL FEATURES
DRAWN: DCN	CHECKED: JSB	DATE: 08/08/2011
		FIGURE: 5

FIGURE 6
Area of Concern
- Shallow Groundwater
JH Baxter
Eugene, Oregon



LEGEND

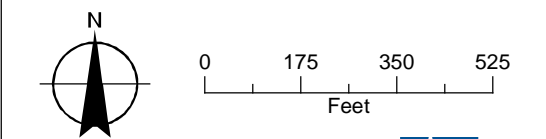
- ⊙ Monitoring Well
- ⊗ Extraction Well
- Water Wells³**
 - Domestic, Irrigation in Use (depth)
 - Industrial, in Use <35' (shallow)
 - Industrial, in Use >100' (deep)
 - Not in Use (residential)
 - Abandoned (residential)
- Pentachlorophenol Concentration (ug/L)**
 - 1 - <50
 - 50 - <150
 - ≥150
- All Other Features**
 - ▭ Facility Boundary
 - - - Locality of Facility
 - ▭ Tax Lot
 - Railroad
 - ~ Watercourse

NOTES:

1. Pentachlorophenol concentration in ug/L (microgram per liter).
2. Samples taken on dates shown. Not all wells were sampled.
3. Water wells and Locality of Facility from Beneficial Water Use Determination. June 28, 2002

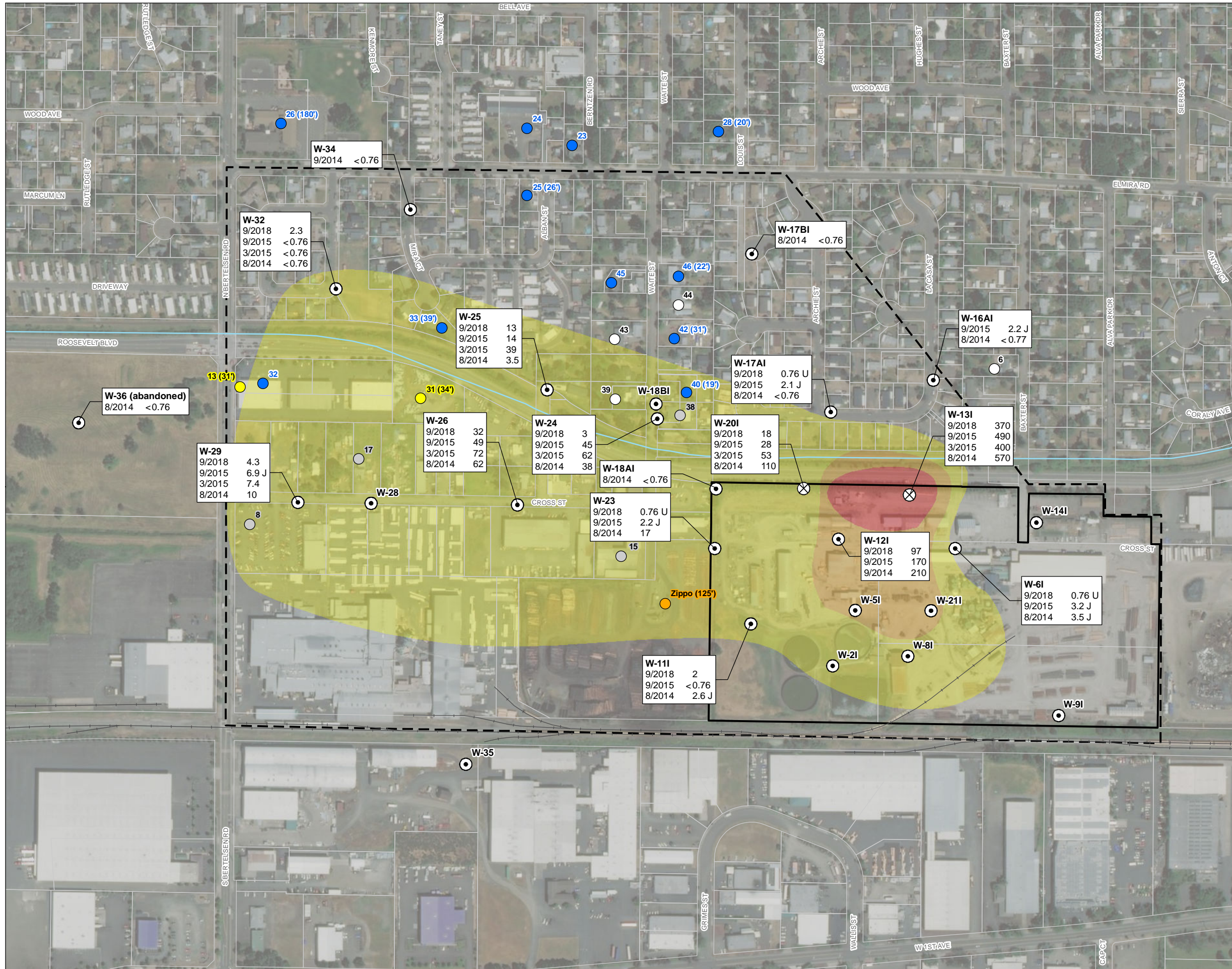
Abbreviations:

- J Estimated
- < Not-Detected at concentration shown



Date: April 3, 2019
 Data Sources: AMEC, USGS, ESRI, Lane Co.

FIGURE 7
Area of Concern
- Intermediate Groundwater
JH Baxter
Eugene, Oregon



LEGEND

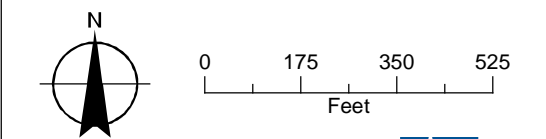
- ⊙ Monitoring Well
- ⊗ Extraction Well
- Water Wells³**
 - Domestic, Irrigation in Use (depth)
 - Industrial, in Use <35' (shallow)
 - Industrial, in Use >100' (deep)
 - Not in Use (residential)
 - Abandoned (residential)
- Pentachlorophenol Concentration (ug/L)**
 - 1 - <50
 - 50 - <150
 - ≥150
- All Other Features**
 - ▭ Facility Boundary
 - - - Locality of Facility
 - ▭ Tax Lot
 - Railroad
 - ~ Watercourse

NOTES:

1. Pentachlorophenol concentration in ug/L (microgram per liter).
2. Samples taken on dates shown. Not all wells were sampled.
3. Water wells and Locality of Facility from Beneficial Water Use Determination. June 28, 2002

Abbreviations:

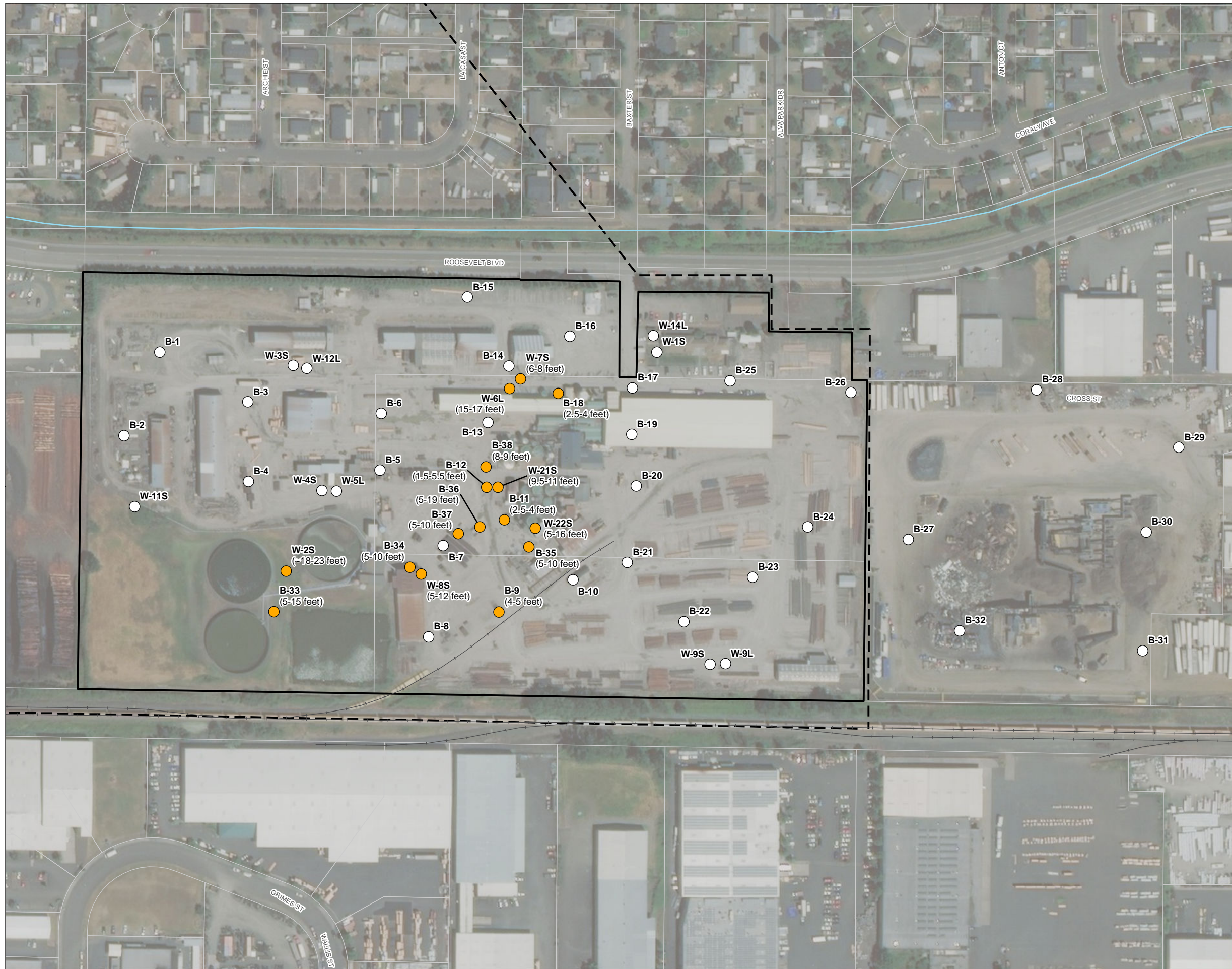
- J Estimated
- < Not-Detected at concentration shown



Date: April 3, 2019
 Data Sources: AMEC, USGS, ESRI, Lane Co.

FIGURE 8

Residual NAPL Observations in Soil
JH Baxter
Eugene, Oregon



LEGEND

Subsurface Soil Samples

● Samples with Residual NAPL at time of drilling boreholes and wells from 1986 through 1995 (depth of NAPL observation)

○ All Other Samples

All Other Features

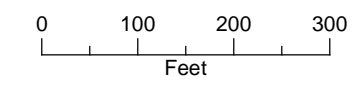
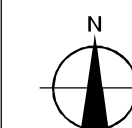
▭ Facility Boundary

- - - Locality of Facility

□ Tax Lot

— Railroad

~ Watercourse



Date: March 28, 2019
Data Sources: AMEC, USGS, ESRI, Lane Co.

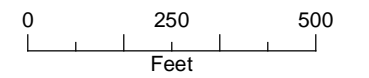
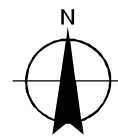


FIGURE 9
Surface Soil Sample Locations
 JH Baxter
 Eugene, Oregon



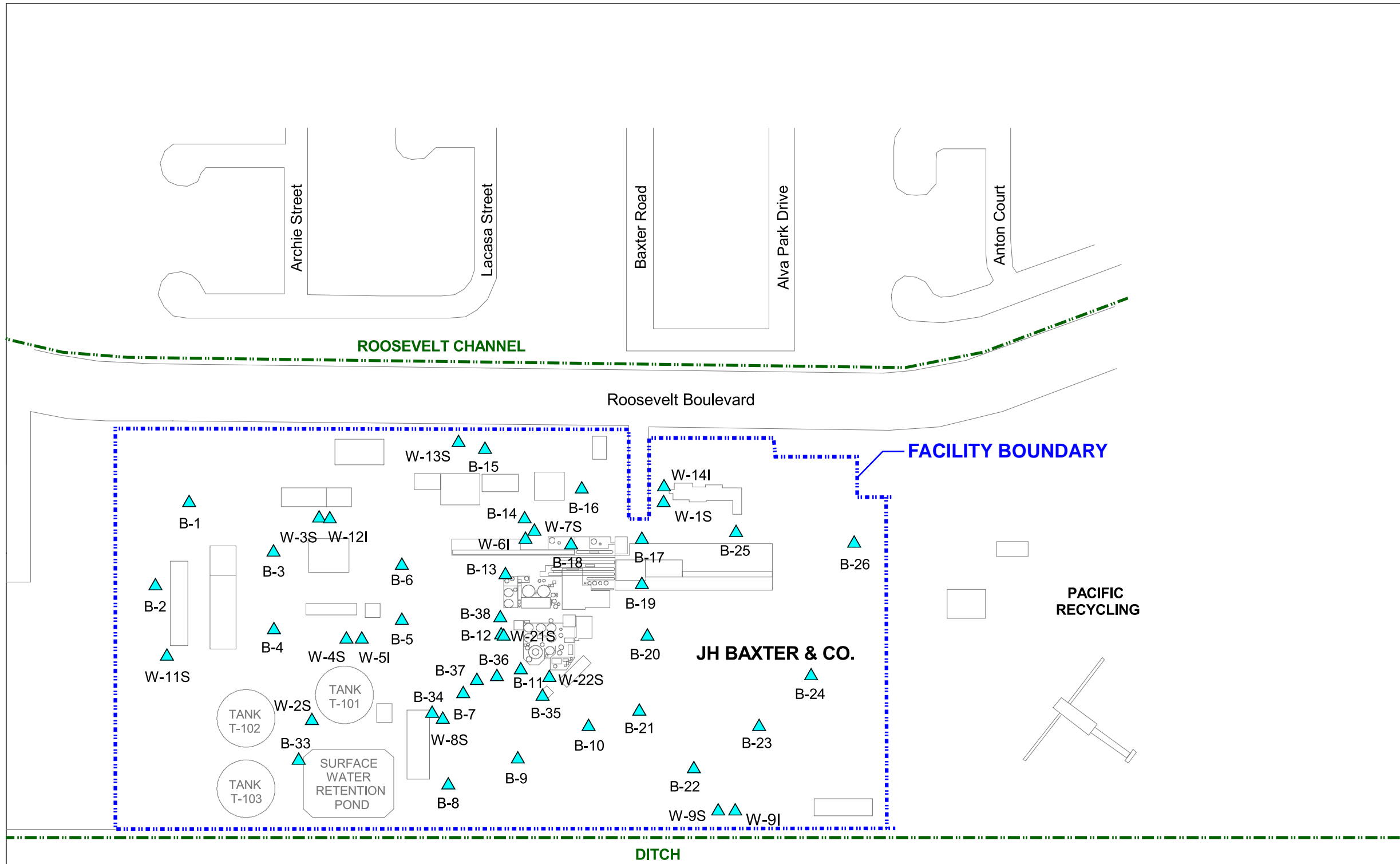
LEGEND

- SS-1 Surface Soil Location (1994)
- ▲ B-1 Surface Soil Location (1994)
- SS-1 Surface Soil Location (1997)
- SS98-1 Surface Soil Location (1998)
- ▲ BH00-1 Surface Soil Location (2000)
- ▲ Surface Soil Location (2002)
- COMP S1



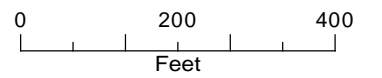
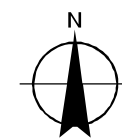
Date: March 28, 2019
 Data Sources: JHBaxter

FIGURE 10
Subsurface Soil Sample Locations
 JH Baxter
 Eugene, Oregon



LEGEND

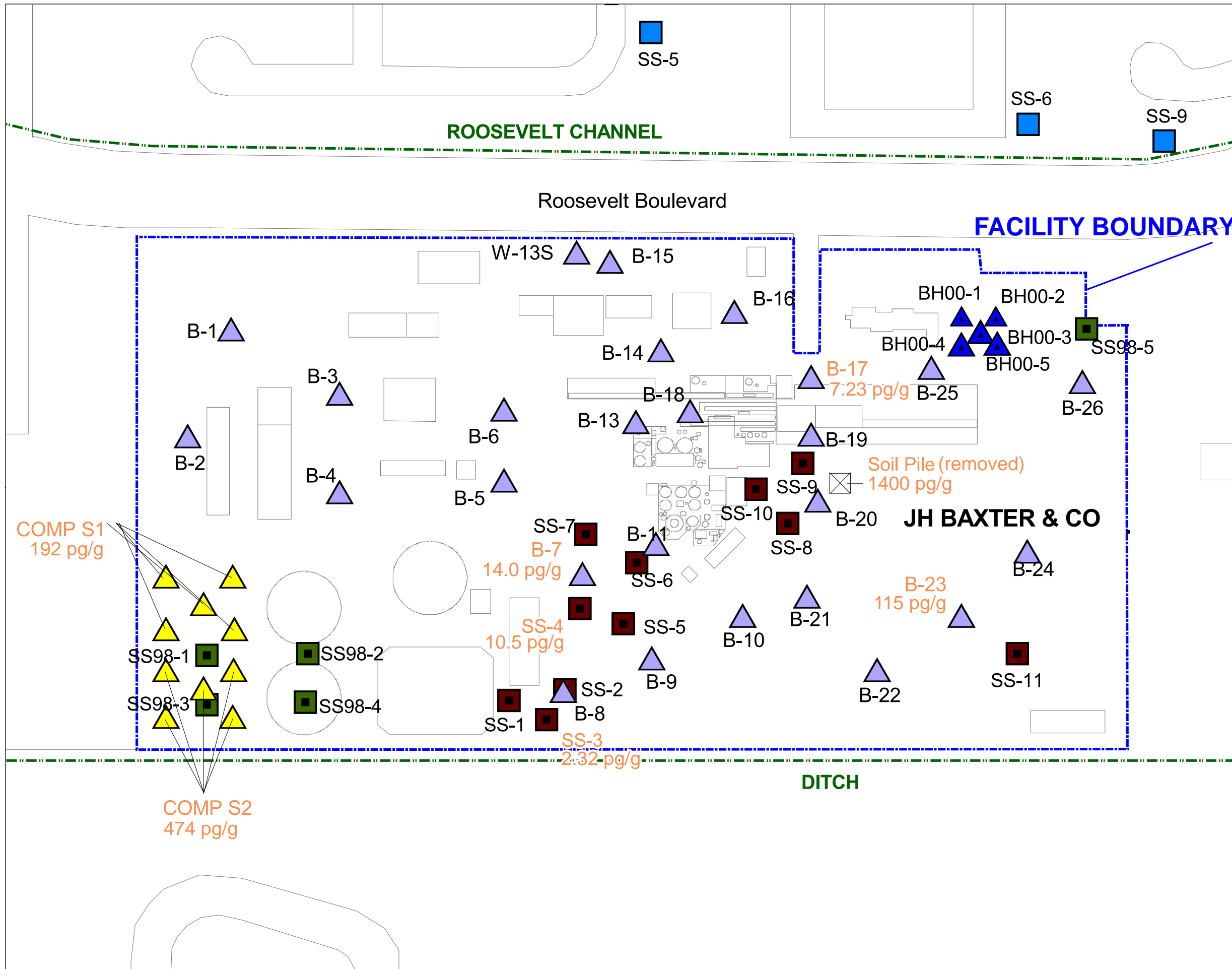
▲ B-36 Soil Sample Station



Date: March 28, 2019
 Data Sources: JHBaxter

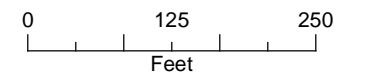
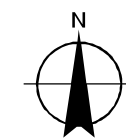


FIGURE 10a
Surface Soil Sample Locations
for Dioxins/Furans
 JH Baxter
 Eugene, Oregon

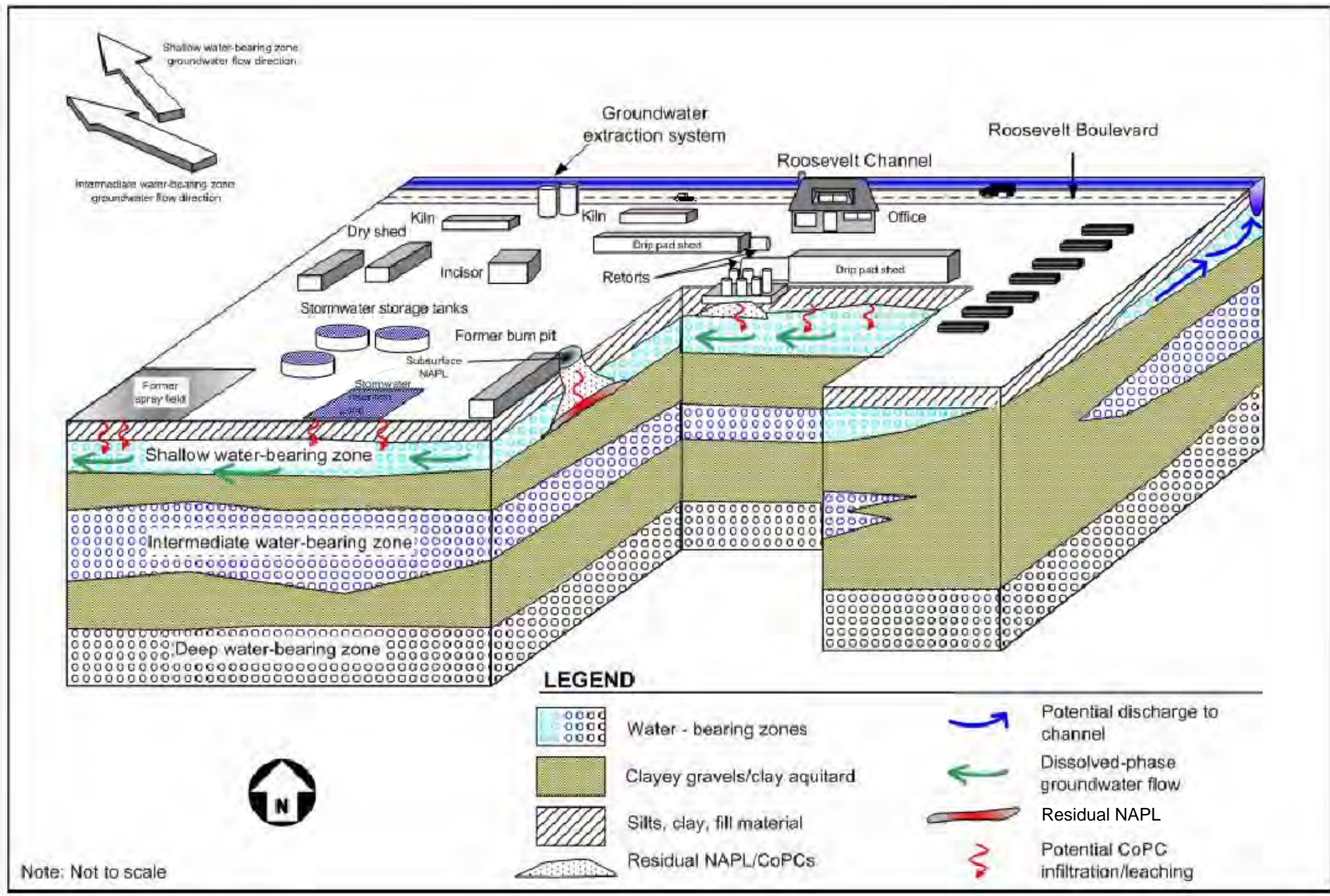


LEGEND

- SS-1 Surface Soil Location (1994)
- ▲ B-1 Surface Soil Location (1994)
- SS-1 Surface Soil Location (1997)
- SS-1 Surface Soil Location (1998)
- ▲ B-1 Surface Soil Location (2000)
- ▲ BH00-1 Surface Soil Location (2002)
- COMP S1



Date: March 28, 2019
 Data Sources: JHBaxter



Note: Not to scale

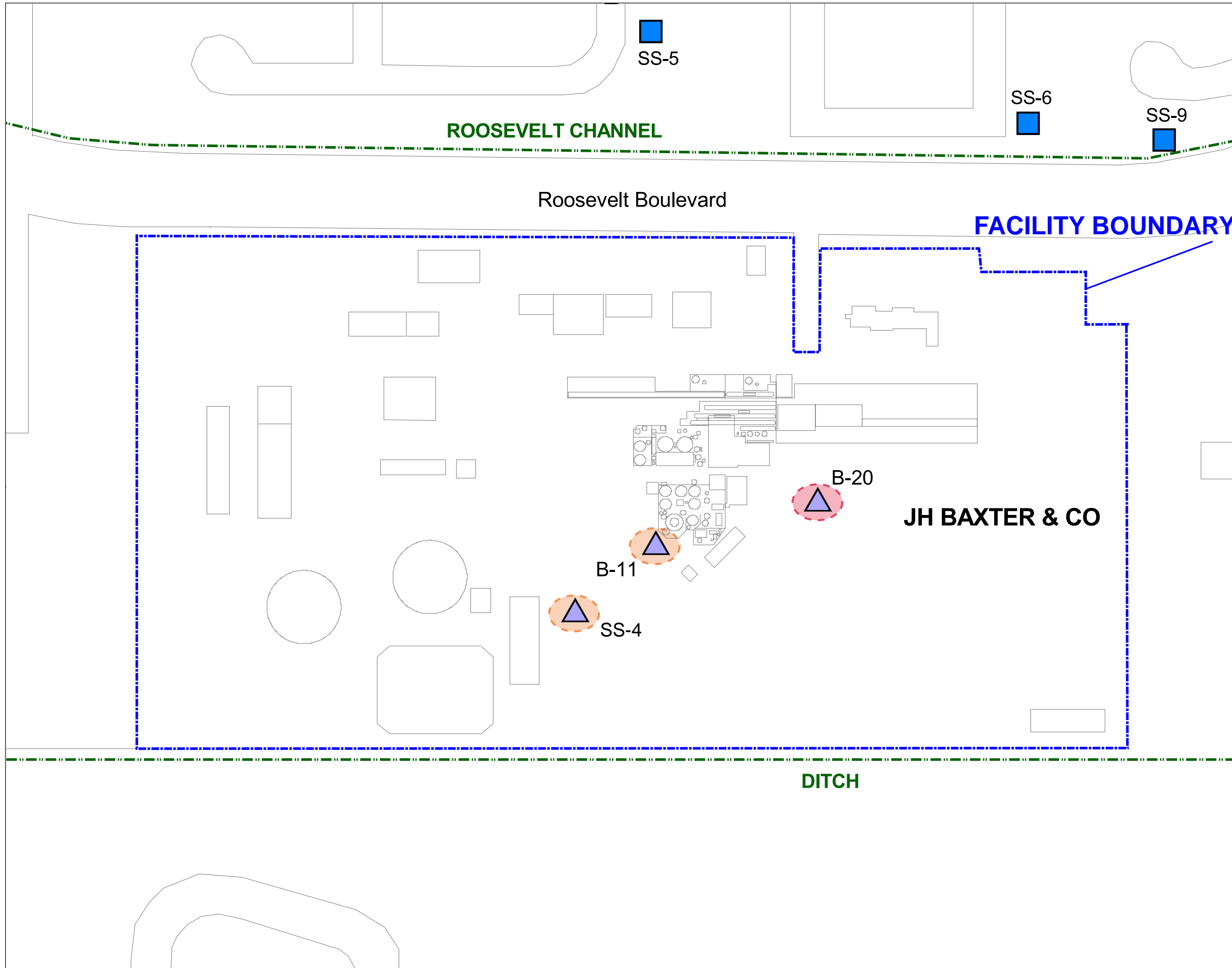
LEGEND

- Water - bearing zones
- Clayey gravels/clay aquitard
- Silts, clay, fill material
- Residual NAPL/CoPCs
- Potential discharge to channel
- Dissolved-phase groundwater flow
- Residual NAPL
- Potential CoPC infiltration/leaching

FILENAME: S:\CAD\PREMIER\BAXTER - EUGENE, OREGON\Shis 4-and-9-

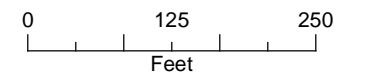
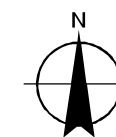
 Baxter EUGENE, OREGON PROJECT NO. 211088.00.005	 EARTHCON SM EarthCon Consultants, Inc. 333 SW FIFTH AVENUE, SUITE 505, PORTLAND, OR 97204	CONCEPTUAL SITE MODEL
DRAWN: DCN	CHECKED: JSB	DATE: 08/08/2011
		FIGURE: 11

FIGURE 11a
Hotspot Soil Sample Locations
for Arsenic
 JH Baxter
 Eugene, Oregon

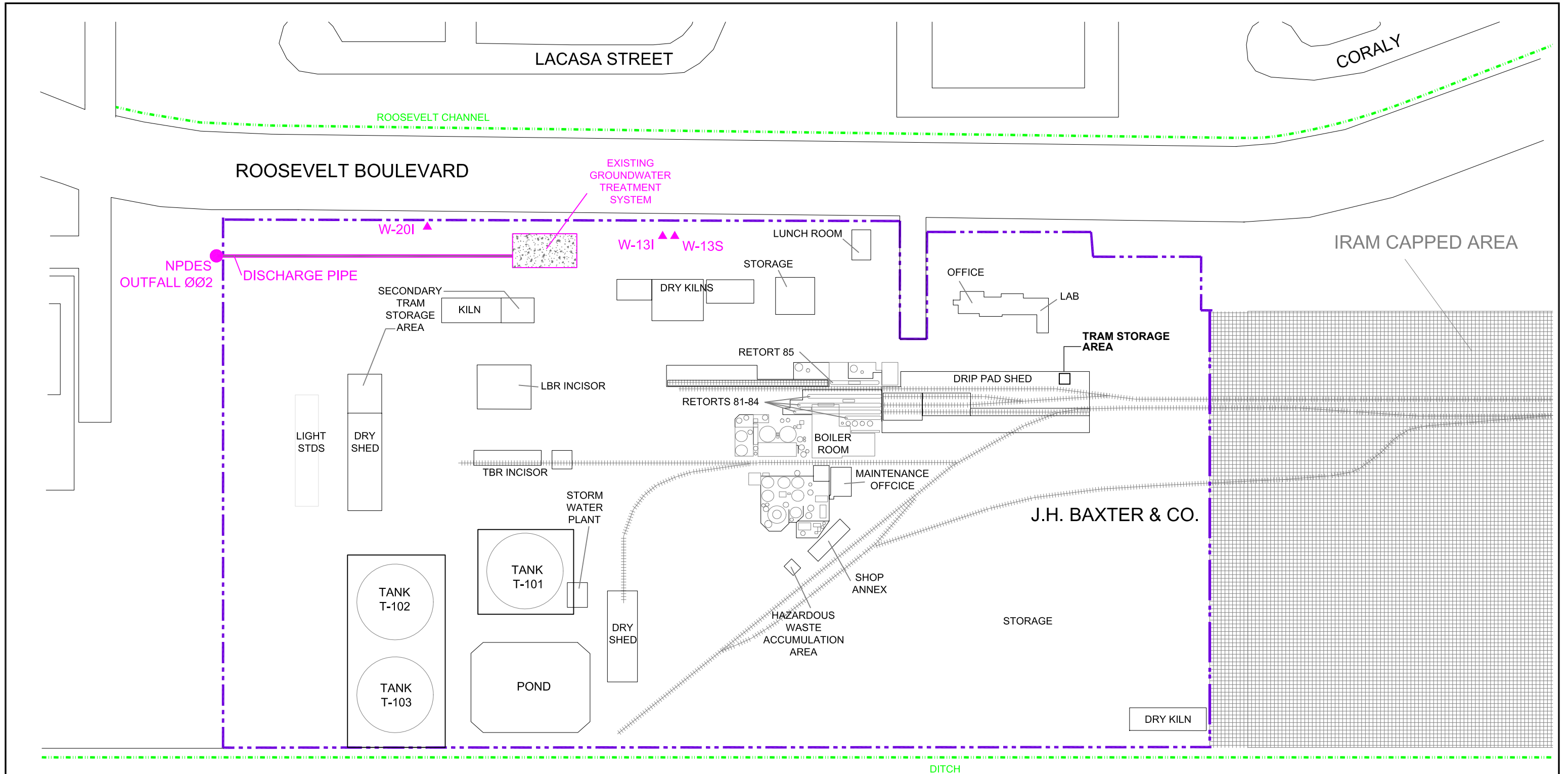


LEGEND

- Surface Soil Location (1994)
- Surface soil sample location with arsenic concentration above DEQ hotspot criteria (340 mg/kg)
- Surface and Subsurface soil sample location with arsenic concentration above DEQ hotspot criteria (1735 mg/kg for subsurface)

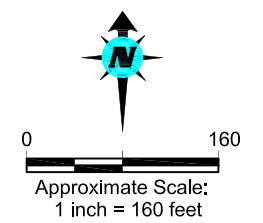


Date: March 28, 2019
 Data Sources: JHBaxter



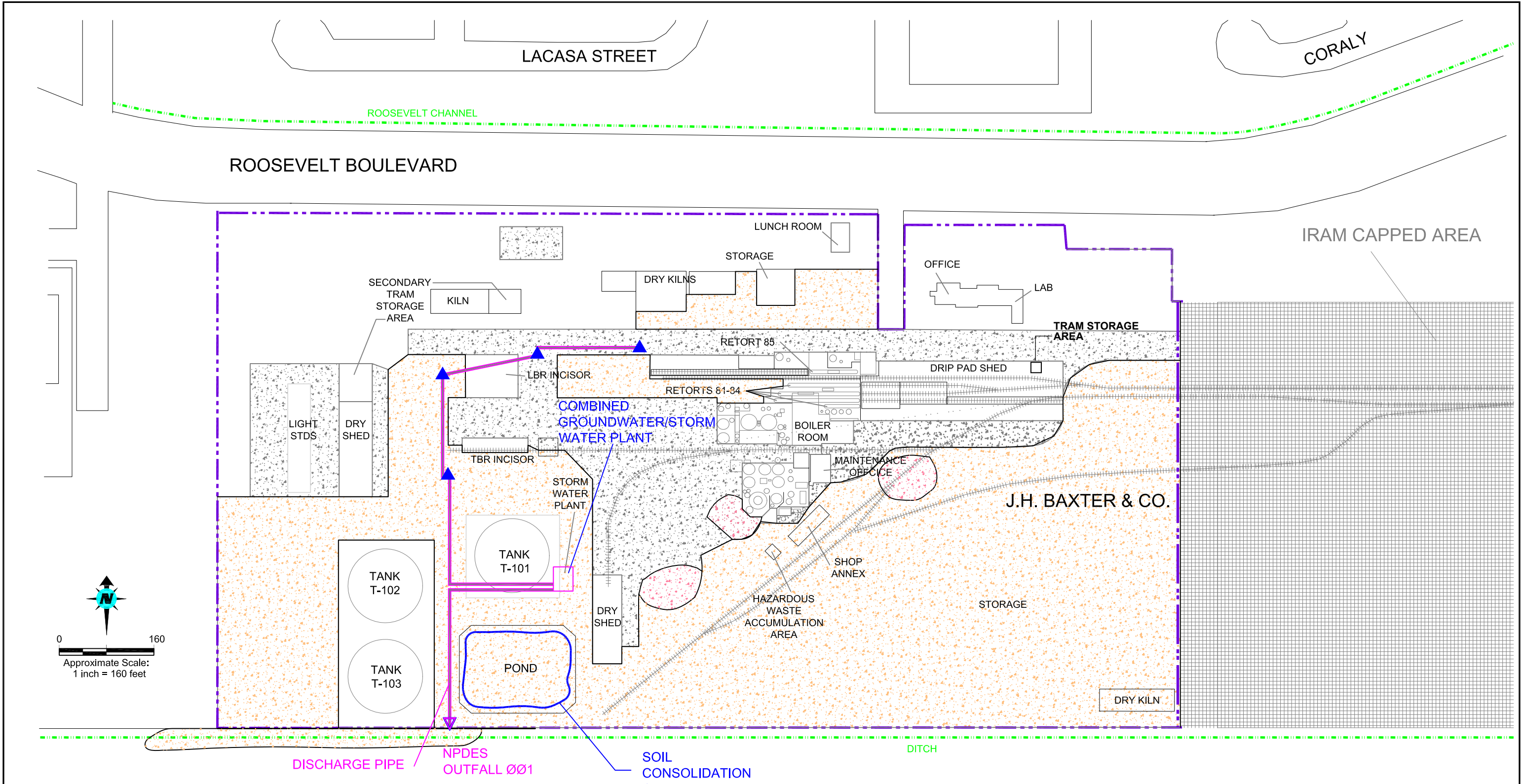
LEGEND

-  FACILITY BOUNDARY
-  RAILROAD
-  PAVED AREAS
-  EXISTING EXTRACTION WELL



FILENAME: S:\CAD\PREMIER\JH BAXTER - EUGENE, OREGON\Series 4-and-6-

 EUGENE, OREGON PROJECT NO. 211088.00.005	 EarthCon Consultants, Inc. 333 SW FIFTH AVENUE, SUITE 505, PORTLAND, OR 97204	ALTERNATIVE 1 - NO ACTION
DRAWN: DCN	CHECKED: JSB	DATE: 08/08/2011
		FIGURE: 12

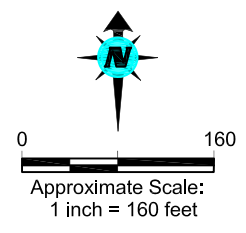
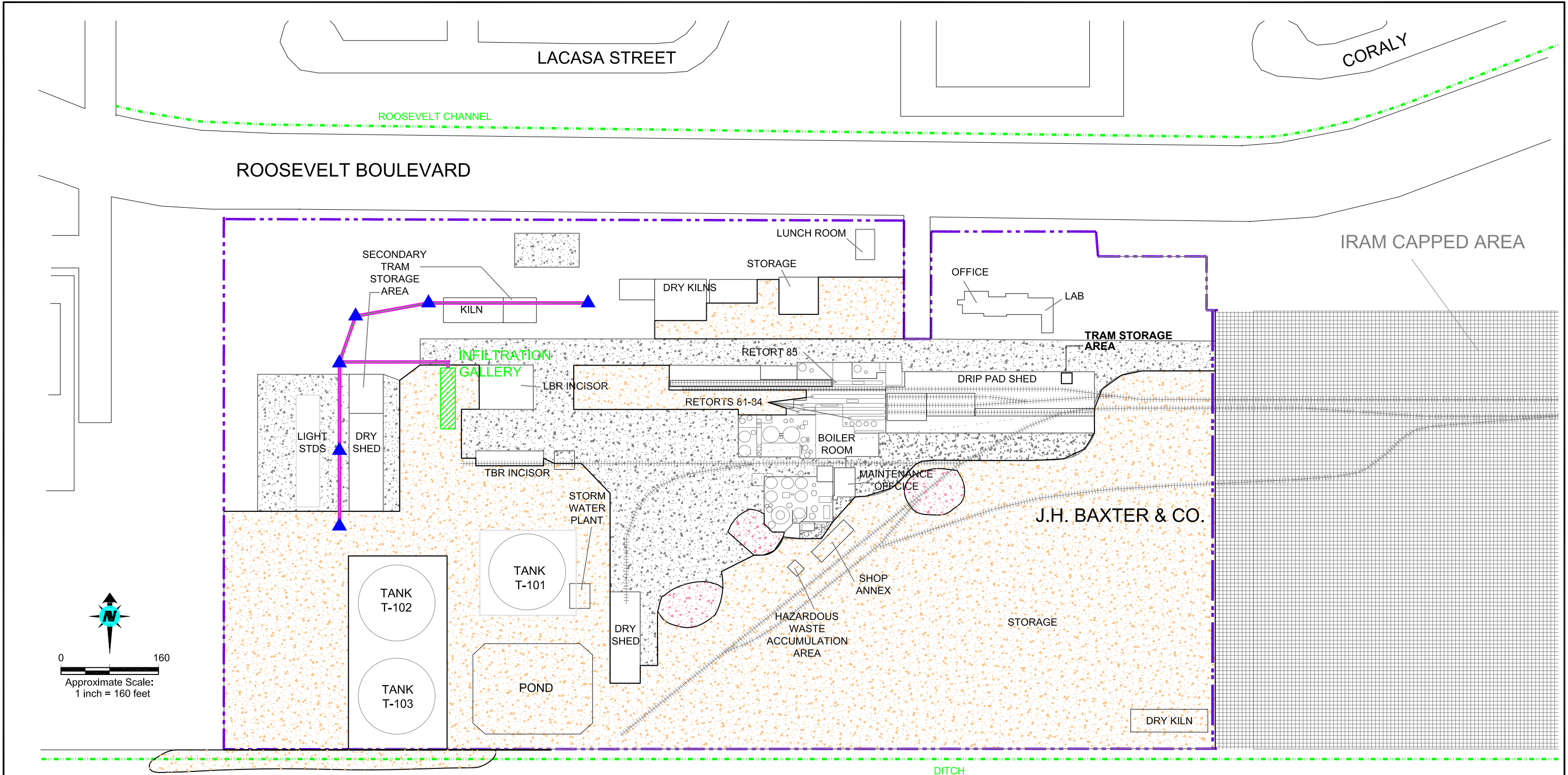


LEGEND

- FACILITY BOUNDARY
- RAILROAD
- PAVED AREAS
- HOT SPOT EXCAVATION AREAS
- CAPPED AREAS
- NEW EXTRACTION WELL
- PIPING

 JHaxter EUGENE, OREGON PROJECT NO. 211088.00.005	 EARTHCON SM EarthCon Consultants, Inc. 333 SW FIFTH AVENUE, SUITE 505, PORTLAND, OR 97204	ALTERNATIVE 2 - CAPPING, HOT SPOT CONSOLIDATION, AND ENHANCED GROUNDWATER EXTRACTION, MNA
DRAWN: DCN	CHECKED: JSB	DATE: 09/30/11
		FIGURE: 13

FILENAME: S:\CAD\PREM\JH BAXTER - EUGENE, OREGON\Shris 4-and-9-



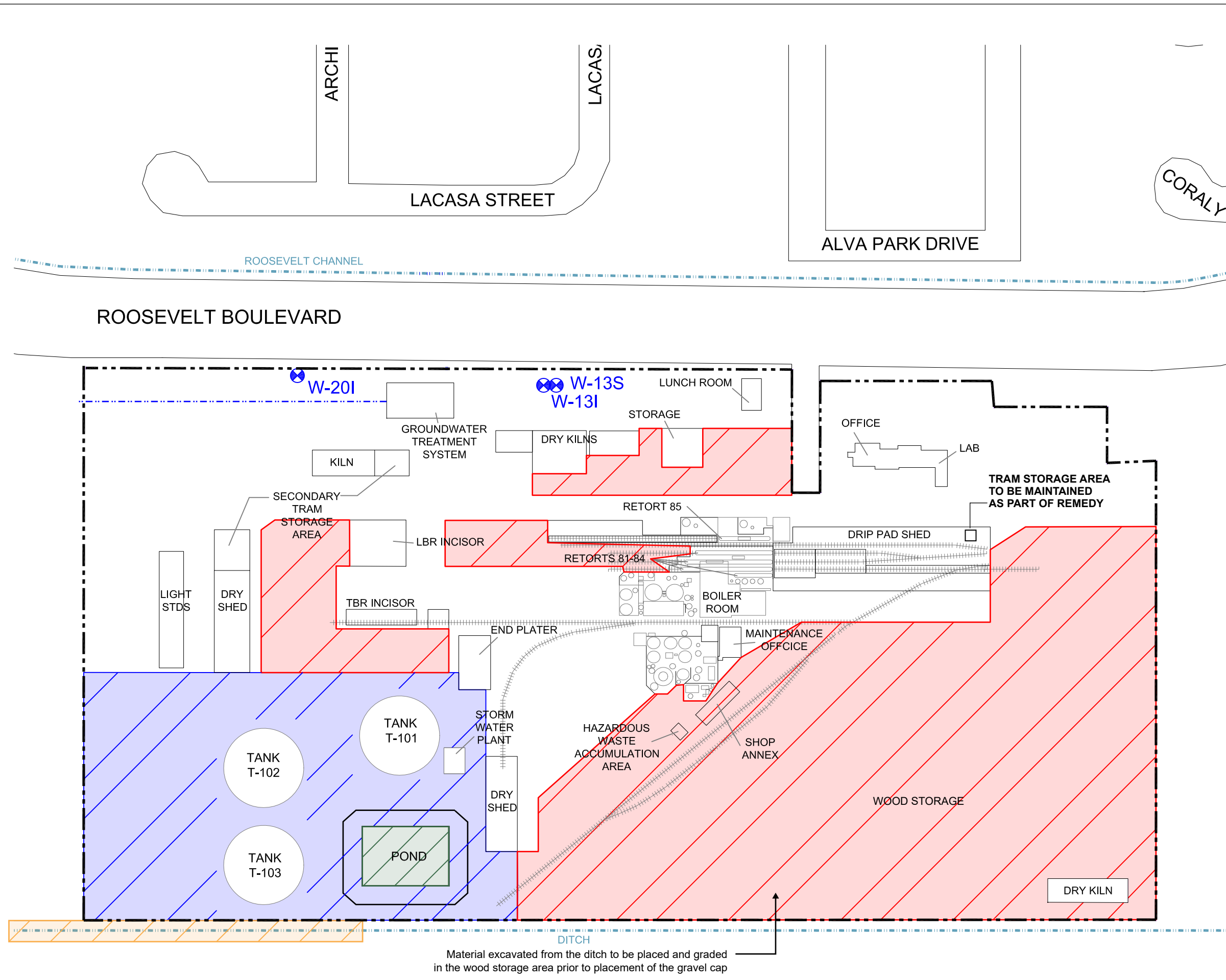
LEGEND

- FACILITY BOUNDARY
- RAILROAD
- PAVED AREAS
- HOT SPOT EXCAVATION AREAS
- CAPPED AREAS
- ▲ NEW EXTRACTION WELL
- PIPING

FILENAME: S:\CAD\PREMIER\JH BAXTER - EUGENE, OREGON\Series 4-and-9-

 EUGENE, OREGON PROJECT NO. 211088.00.005	 EarthCon Consultants, Inc. 333 SW FIFTH AVENUE, SUITE 505, PORTLAND, OR 97204	ALTERNATIVE 3 - CAPPING, HOT SPOT EXCAVATION AND DISPOSAL ENHANCED BIOREMEDIATION
DRAWN: DCN	CHECKED: JSB	DATE: 09/30/11
		FIGURE: 14

FIGURE 15
Preferred Alternative 3a
 J. H. Baxter Wood Treating Facility
 Eugene, Oregon



LEGEND

- Groundwater Extraction Well
- Facility Boundary
- Railroad
- Treatment System Discharge (Outfall 002)
- 12" Gravel and Geotextile Cap
- 6" Gravel and Geotextile Cap
- 6" Sediment Removal and Gravel Cap
- 3" Gravel and Geotextile Cap in Pond Bottom

NOTE:
 The thickness and construction material for the cap may be different than described in the legend, based on operational needs and approval by DEQ.

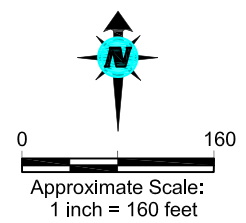
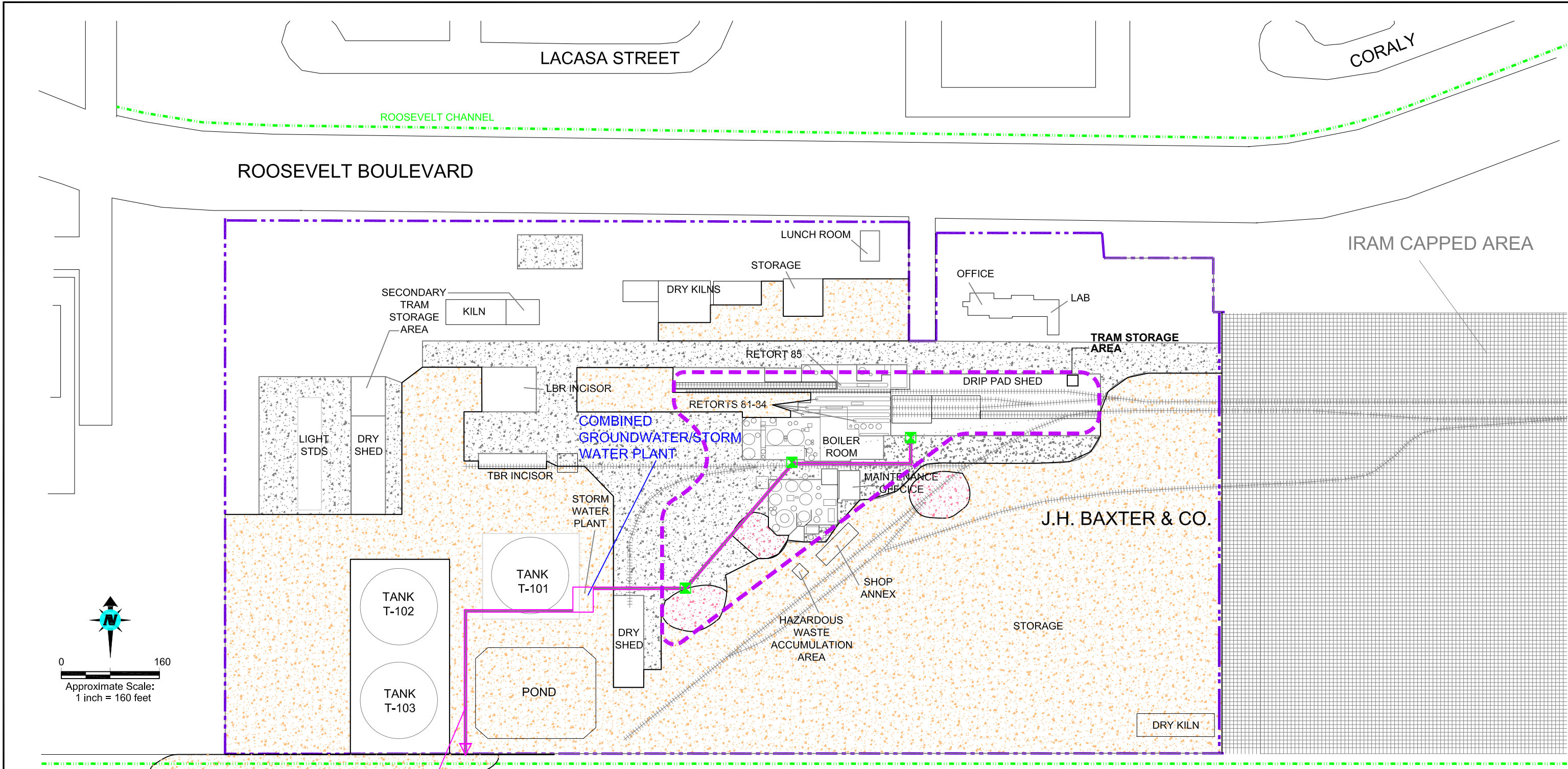
N

0 100 200
Feet

GSI
 Water Solutions, Inc.

Data Sources: AMEC

Material excavated from the ditch to be placed and graded in the wood storage area prior to placement of the gravel cap

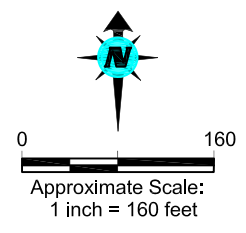
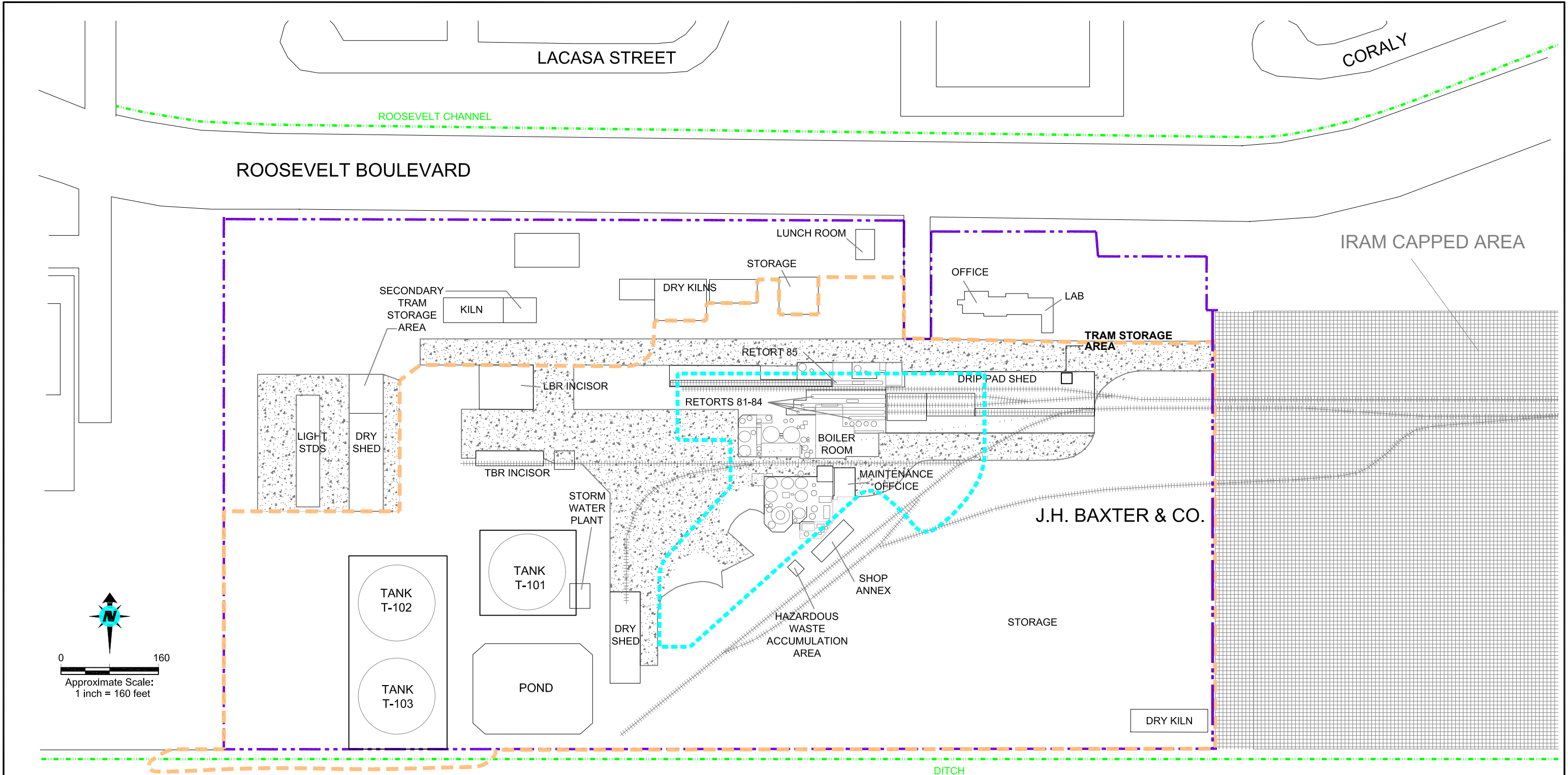


LEGEND

- FACILITY BOUNDARY
- RAILROAD
- PAVED AREAS
- HOT SPOT EXCAVATION AREAS
- CAPPED AREAS
- TOTAL FLUID EXTRACTION WELL
- PIPING
- APPROXIMATE LOCATION OF CONTAINMENT WALL

FILENAME: S:\CAD\PREMIER\JH BAXTER - EUGENE, OREGON\Series 4 and 9_rev 092311

<p>JHaxter EUGENE, OREGON PROJECT NO. 211088.00.005</p>	<p>EarthConSM EarthCon Consultants, Inc. 333 SW FIFTH AVENUE, SUITE 505, PORTLAND, OR 97204</p>	<p>ALTERNATIVE 4 - CAPPING, HOT SPOT EXCAVATION AND DISPOSAL, PHYSICAL/HYDRAULIC CONTAINMENT, MNA</p>
DRAWN: DCN	CHECKED: JSB	DATE: 09/30/11
		FIGURE: 16



LEGEND

- FACILITY BOUNDARY
- RAILROAD
- APPROXIMATE LIMIT OF DEEPER EXCAVATION (± 10 FT.)
- APPROXIMATE LIMIT OF SHALLOW EXCAVATION
- PAVED AREAS

FILENAME: S:\CAD\PREMIER\JH BAXTER - EUGENE, OREGON\Series 4.rvt

 EUGENE, OREGON PROJECT NO. 211088.00.005	 EarthCon Consultants, Inc. 333 SW FIFTH AVENUE, SUITE 505, PORTLAND, OR 97204	ALTERNATIVE 5 - SOIL EXCAVATION AND OFFSITE DISPOSAL, MNA
DRAWN: DCN	CHECKED: JSB	DATE: 09/30/11
		FIGURE: 17