



## INSPECTOR'S DAILY REPORT

**City of Molalla • Public Works Department  
117 N. Molalla Ave. • Molalla, OR 97038  
(503) 829-6855 Phone • (503) 829-3676 Fax**

<b>Date: 06/04/2020</b>	<b>Project Name: 302 N Cole Ave</b>
<b>Weather/Temp: ±72 °</b>	<b>Permit No.: PW38-2020</b>
<b>Type of Inspection: Sewer Tap</b>	<b>Engineering File: 302 N Cole Home Cons.</b>

### Contractors, Personnel, & Equipment (if needed)

<b>Gen. Contractor: Spanfellner Construction</b>	<b>Superintendent: Cody</b>
<b>Sub-Contractor: Columbia Excavating</b>	<b>Foreman: Chas</b>
<b>Personnel: Foreman (1), Operators (1), Laborers (2)</b>	
<b>Equipment: Track Hoe &amp; Dump Truck</b>	

## COMMENTS

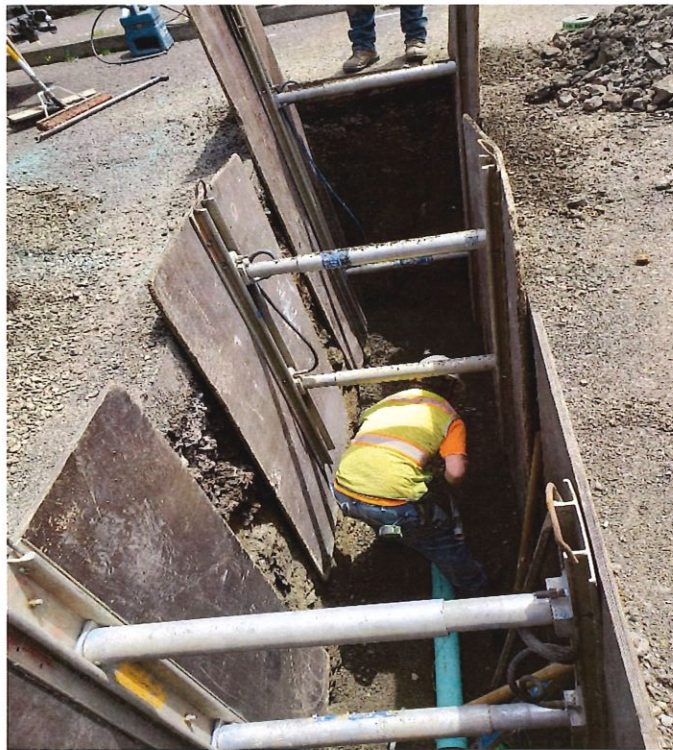
Arrived on site at 10:30 am.

Columbia Excavating conducting Sewer Tap to the main line for 302 N Cole Ave. Spoke with foreman (Chas) about conditions that pertain to the permit, (Refer to the 302 N Cole Ave., Sewer & Water Connection – PW Permit Conditions). Traffic Control was in place, But inefficient flaggers on site to direct traffic. Sewer Tap involved a three quarter street cut going west to east. Columbia Excavating exposed the sewer main line by removing approx. 16 yards of fill to open a 3' wide by 10' deep trench. line tap was core drilled and Inserta Tee installed to complete the connection to main line. Additional 14' of 4' PVC pipe was laid, connecting to Inserta Tee going west to the property. Green tracer wire was placed over pipe with one foot a ¾-0 gravel and green reflective tape. ¾-0 gravel was placed in the trench and compacted in 3' increments. Steel plates where place over trench at the end of the day.

See Images Below.



View to the East Inserta Tee connection to sewer main line.



View to the east, 14' of 4" PVC connecting to Inserta Tee.



View to the East,  $\frac{3}{4}$ -0 gravel, green tracer wire and reflective tape.

Approx. 3' wide x 22' long and 6" deep AC and Approx. 16 yards of fill was removed. One Inserta Tee with 14' of 4" PVC pipe installed and Approx. 10 yards of  $\frac{3}{4}$ -0 gravel of back fill placed in trench.

*Sam Miller*

Sam Miller  
Sr. Engineer Tech.

