

Kim

AGENDA

CITY OF THE DALLES
TRAFFIC SAFETY COMMISSION

July 20, 1988

Recreation Cafe
215 E 2nd St.
The Dalles, Oregon

- I. CALL TO ORDER 7:00
- II. ROLL CALL Don Hall, Mark, Merritt, Maury, Scott Mergis
- III. MINUTES - May 18, 1988 Jerry Jeffers, Jerry Betts
Mark Maury 2nd unanimous
- IV. ~~OLD~~ NEW BUSINESS Absent: Cecelia, Frank
 - A. Request from Downtown Development Association to increase downtown parking. Jerry Jeffers - planters, seating, drinking fountains
 - B. Request to eliminate the left turn off of U.S. 30 (E 2nd St.) onto Brewery Grade (see attached map). Mark, Scott 2nd
leave as is - unanimous
- VI. MISCELLANEOUS BUSINESS Jim Peterson appointed
- VII. ADJOURNMENT Maury Mark 8:25
 - accident report
 - emergency vehicles
 - A. Wasco County Court will be eliminating parking spaces plus adding employees
 - B. W. 3rd & delineators

MINUTES OF TRAFFIC SAFETY COMMISSION
JULY 20, 1988

Recreation Cafe
The Dalles, Oregon

CALL TO ORDER

The meeting was called to order at 7:00 a.m., by Chairman Don Hall at the Recreation Cafe, 215 E 2nd Street, The Dalles, Oregon.

ROLL CALL

Present: Don Hall, Scott Mengis, Maury Snow, and Mark Sullivan.

Absent: Cecelia Cushing and Frank Bonn.

City Council: Merritt Probstfield.

Staff: Jerry Betts and Kim McMillan.

Visitor: Jerry Jeffers, Mel O's Camera Shop.

MINUTES

A motion was made by Mark Sullivan, and seconded by Maury Snow, to approve the minutes of May 18, 1988. Motion carried unanimously.

OLD BUSINESS

None.

NEW BUSINESS

- A. Request from Downtown Development Association to increase downtown parking. Jerry Jeffers was present to discuss this issue.

Jerry discussed the idea of beautifying the downtown area with plantings, trees, street lamps, drinking fountains and seating. There was discussion among the members concerning traffic and pedestrian flow. The members agreed that the ideas for beautification are good and they would like to be kept informed as the plans become more defined.

- B. Request to eliminate left turn off of U.S. 30 (East Second Street) onto Brewery Grade.

Kim McMillan presented this request from a local citizen. The proposal would eliminate the left turn onto Brewery Grade to go down to Monroe Street to turn around. After

much debate, Mark Sullivan moved, seconded by Scott to leave the left turn as is. Motion carried unanimously.

MISCELLANEOUS BUSINESS

- A. Scott Mengis wanted to inform the Commission that Wasco County may be building a jail facility on their parking lot at the Courthouse. If the jail is built there, it would eliminate 18-25 regularly used parking spaces, as well as create additional parking needs for new employees. No action was required.

- B. Mark Sullivan has received several comments regarding the delineators placed on West Third Place. The comments from citizens have been favorable, but usually accompanied by a request to put a similar delineator along the centerline at this location. Jerry Betts stated that those types of delineators are not usually used because they come off easily when the streets are plowed in the winter. Kim McMillan and Jerry Betts will look into this further.

ADJOURNMENT

A motion was made by Maury Snow and seconded by Mark Sullivan, to adjourn the meeting at 8:25 a.m. Motion carried unanimously.

Submitted by Kim McMillan



CITY of THE DALLES

313 COURT STREET
THE DALLES, OREGON 97058
AREA CODE (503) 296-2233

POLICE DEPARTMENT

Office of The Chief of Police
PAUL J. NAGY

June 29, 1988

MEMORANDUM

TO: Barbara Sacks, Planner I

FROM: Paul J. Nagy, Chief of Police

SUBJECT: Proposal to Increase the Number of Downtown On-Street Parking Spaces.

The subject proposal was discussed in depth at a recent department staff meeting, and it was generally agreed that while a few additional parking spaces would be created, there would be more traffic problems created. They are:

1. Second and Third Streets are one-way streets with two lanes of traffic on each. Court and Federal Streets, under this proposal would also be one-way streets with two lanes of traffic on each. Court and Federal Streets are controlled by stop-signs only, and without a signalized or all-way stop sign, the potential collisions will be greatly increased.
2. The Oregon State Highway Department strongly discourages 'angle parking'. The reason being backing into traffic at an angle poses a greater risk of collision, than does coming to a stop in traffic lane, then backing into a parallel parking space. Pulling out of a parallel parking space is much safer, also, as the driver has better vision for oncoming traffic.

The police staff was highly complimentary about the planters at intersections.

We hope this information helps the Downtown Development Association in their deliberation.

Paul J. Nagy
Chief of Police

PHN:mrm





June 9, 1988

MEMO

TO: TRAFFIC SAFETY COMMISSION, ROD McKEE/KIM McMILLAN, JERRY UNDERHILL, AND PAUL NAGY.

FROM: BARBARA SACK, PLANNER I (FOR JACK LESCH)

RE: A NEW PROPOSAL TO INCREASE THE NUMBER OF DOWNTOWN ON-STREET PARKING SPACES BY THE DOWNTOWN DEVELOPMENT ASSOCIATION

The Downtown Development Association would like feedback on a proposal to create additional parking in the downtown core. It involves changing the parking spaces to diagonal ones as shown on the attached map. This would involve changing Court Street into a one-way street going south and Federal to a one-way street going north. This proposal might create problems for police and fire vehicles leaving City Hall that need to gain quick access to Second Street.

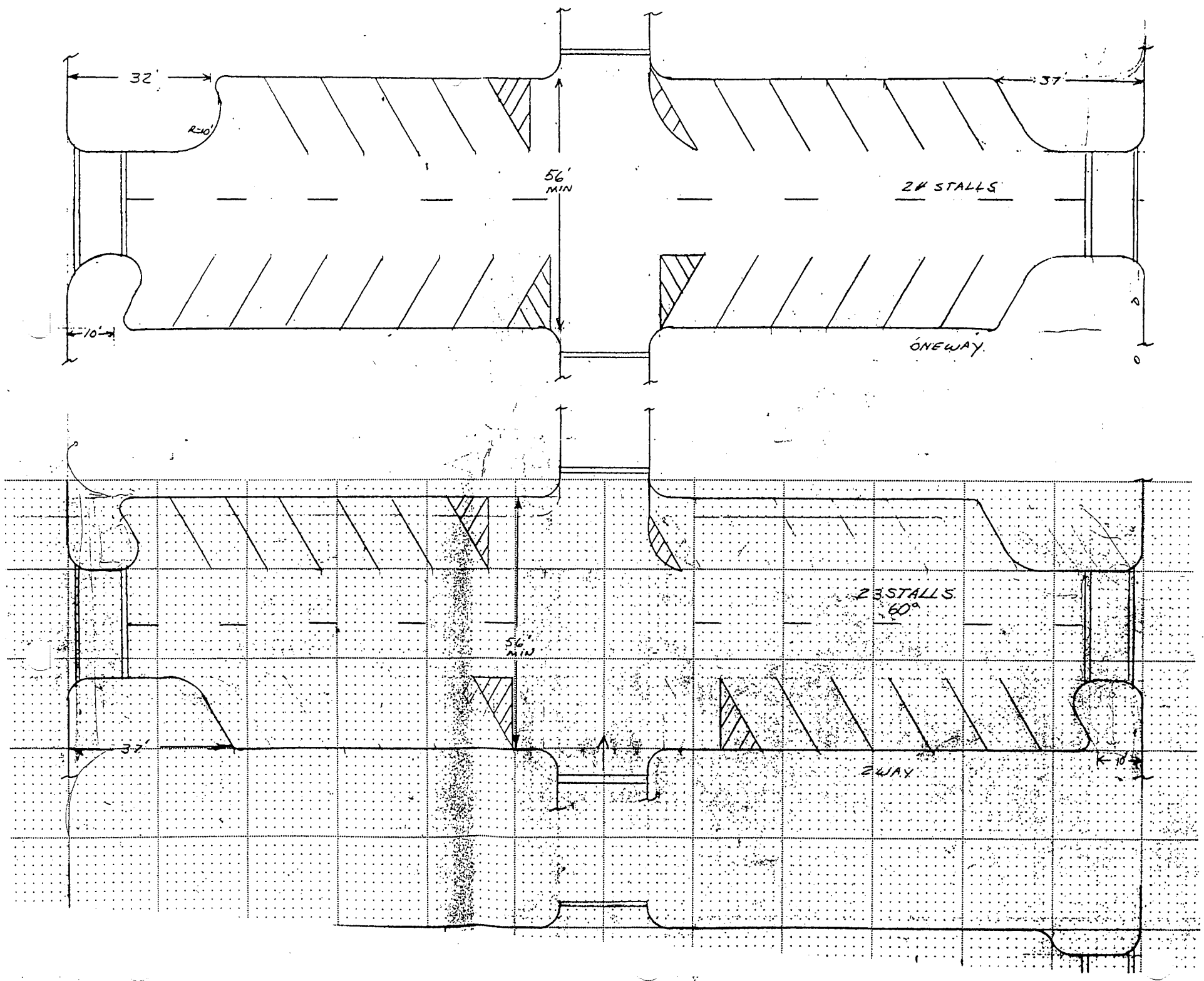
Court and Federal are 58' wide. The parking stalls would take up 18-19' on either side of the street. This leaves a roadway of 22' or 23'.

The first attachment is a rough approximation of their plan. The second attachment is a proposal for channelization of the streets containing the diagonal parking. There would be planters at intersections.

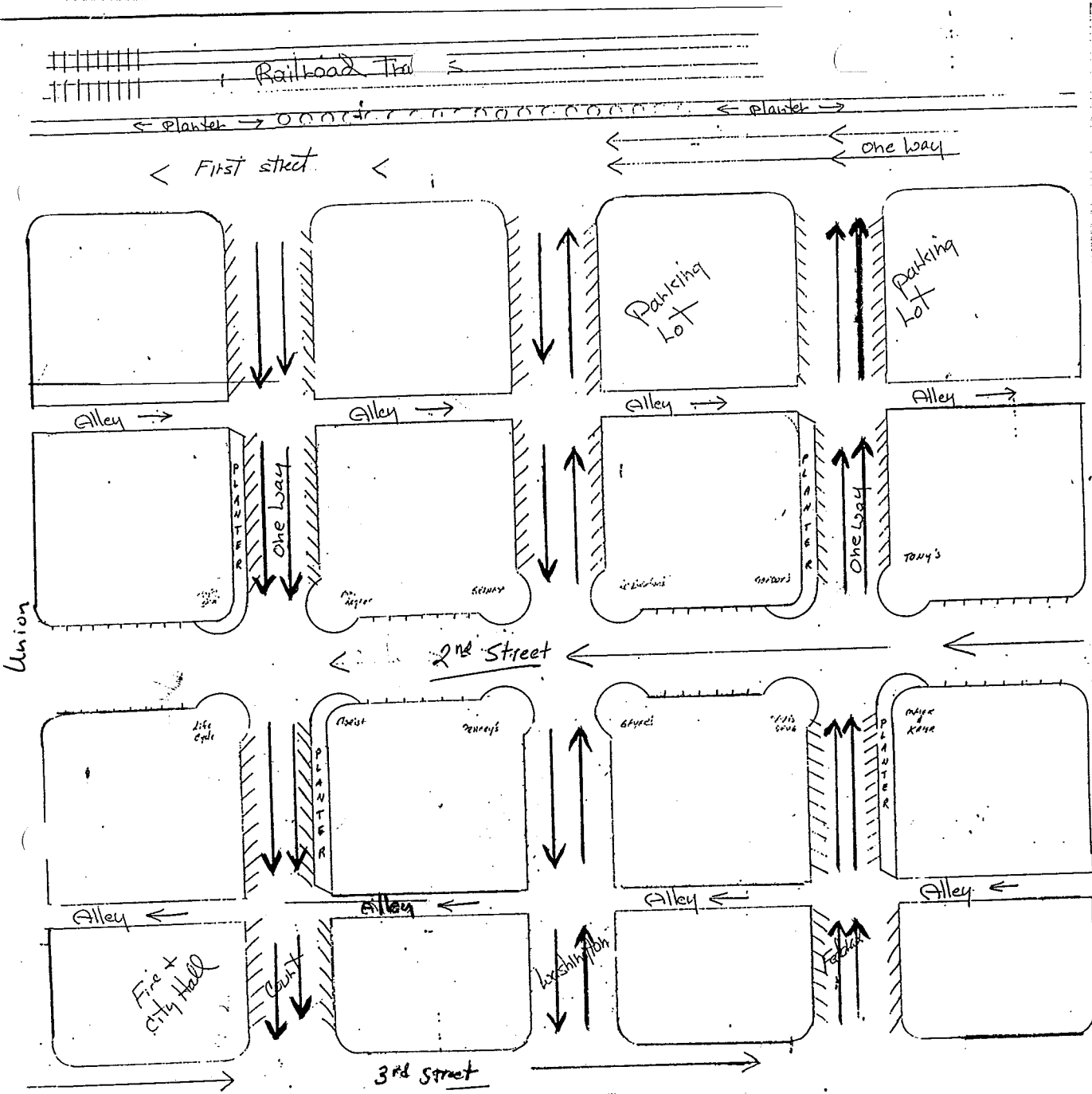
At this point, the downtown association wants comments, not a final recommendation.

BJS/db

attachment



PROPOSED CHANNELIZATION SCHEME



THE DOWNTOWN DEVELOPMENT ASSOCIATION'S
PRELIMINARY PARKING PLAN

