

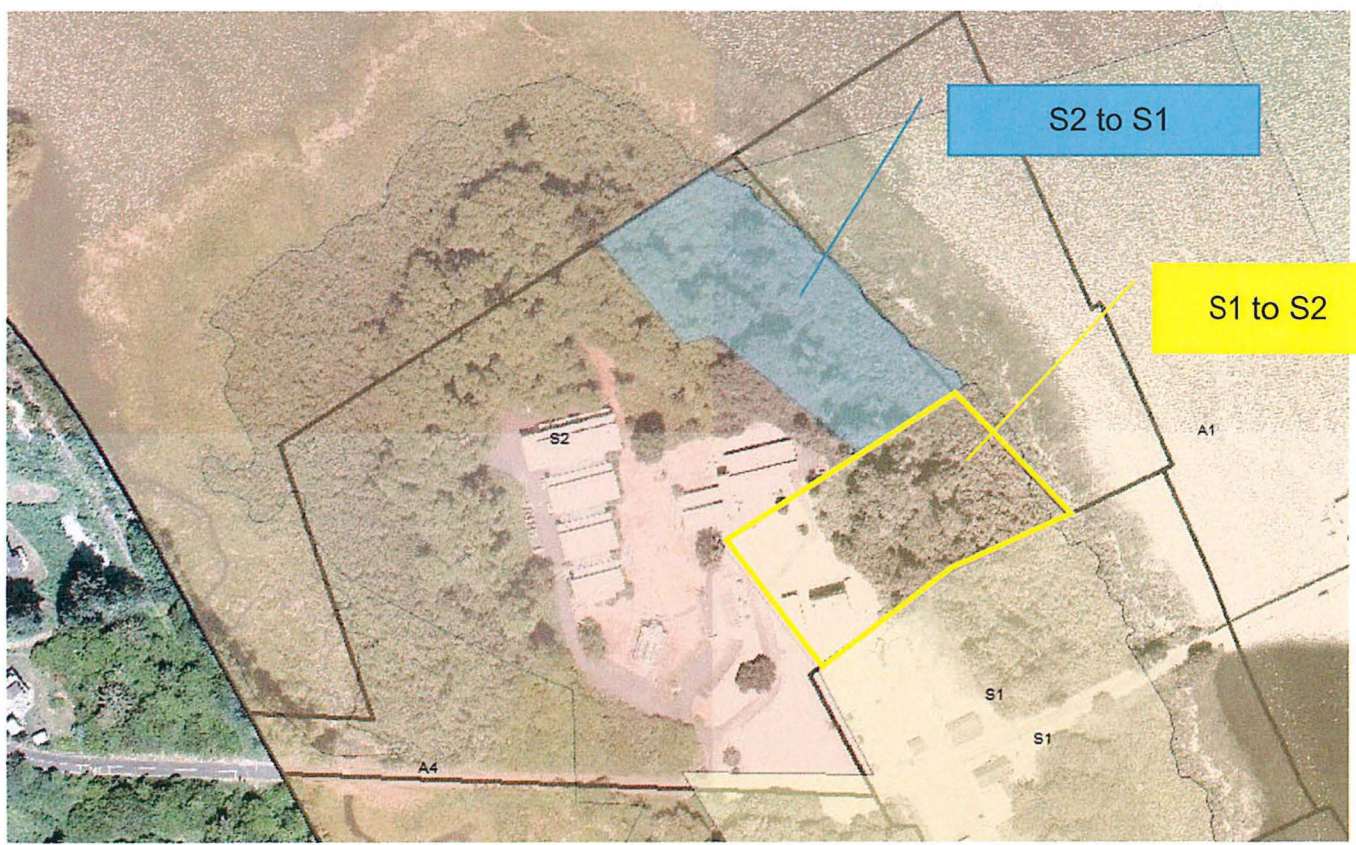
ORDINANCE NO. 20-09

AN ORDINANCE AMENDING THE ASTORIA LAND USE AND ZONING MAP BY SHAUN MARTIN, ON BEHALF OF CLATSOP COMMUNITY COLLEGE, TO AMEND THE CITY OF ASTORIA ZONING MAP ON THREE ACRES FROM S1 (MARINE INDUSTRIAL SHORELANDS) TO S2 (GENERAL DEVELOPMENT SHORELANDS) AND A CORRESPONDING THREE ACRES FROM S2 (GENERAL DEVELOPMENT SHORELANDS) TO S1 (MARINE INDUSTRIAL SHORELANDS) AT 6562 LIBERTY LANE AS SHOWN ON THE ATTACHED MAP

THE CITY OF ASTORIA DOES ORDAIN AS FOLLOWS:

Section 1. Astoria Land Use and Zoning Map is amended with rezoning three acres of the following property from S1 (Marine Industrial Shorelands) to S2 (General Development Shorelands) and rezoning three acres of the following property from S2 (General Development Shorelands) to S1 (Marine Industrial Shorelands).

Map T8N R9W Section 12, Tax Lot 00102: Parcel 2 of Partition Plat 2018-017. The area to be rezoned is as described in Attachment A.



Attachment "A"

METES AND BOUNDS LEGAL DESCRIPTION FOR ZONING MAP AMENDMENT AREA

THENCE (1) South 57°28'11" West, 275.07 feet to a point of non-tangency;

THENCE (2) South 39°43'50" East, 229.24 feet to a point of non-tangency; THENCE

(3) North 73°41'10" East, 53.83 feet to a point of non-tangency; THENCE (4) South

51°14'53" East, 325.56 feet to a point of non-tangency; THENCE (5) North

57°10'48" East, 193.02 feet to a point of non-tangency; THENCE (6) North

43°07'30" West, 559.37 feet;

Containing 134,798.64 square feet, (3.09 acres) more or less, is now zoned Marine Industrial Shorelands (S1);

and

THENCE (1) North 43°07'30" West, 287.48 feet to a point of non-tangency;

THENCE (2) South 57°27'46" West, 478.38 feet to a point of non-tangency;

THENCE (3) South 34°21'35" East, 272.97 feet to a point of non-tangency; THENCE

(4) North 53°54'17" East, 301.82 feet to a point of non-tangency; THENCE (5)

North 64°47'48" East, 223.11 feet;

Containing 132,469.21 square feet, (3.04 ac.) more or less, is now zoned General Development Shorelands (S2).