

**RESOLUTION TO EXPAND PIONEER SCHOOL
SPEED ZONE ONTO REEVES PARKWAY IN THE
VICINITY OF 5TH STREET**

) **RESOLUTION NO. 2019-29**
)
)

WHEREAS, the City Council of the City of Lebanon did review the existing speed zone on Reeves Parkway in the vicinity of South 5th Street with staff and, with concurrence of the Lebanon Chief of Police, recommends that the school speed zone be expanded.

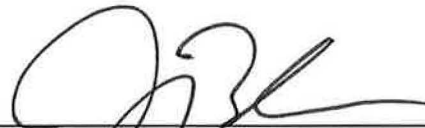
NOW, THEREFORE, THE LEBANON CITY COUNCIL HEREBY RESOLVES AS FOLLOWS:

SECTION 1: The Pioneer School Speed Zone is expanded onto Reeves Parkway in the vicinity of 5th Street as specified in Exhibit "A", which is incorporated herein.

SECTION 2: Effective Date. This Resolution shall become effective upon passage.

Passed by the Lebanon City Council and executed by the Mayor on this 13th day of November 2019, by a vote of 6 yeas and 0 nays.

CITY OF LEBANON, OREGON



Paul R. Aziz, Mayor

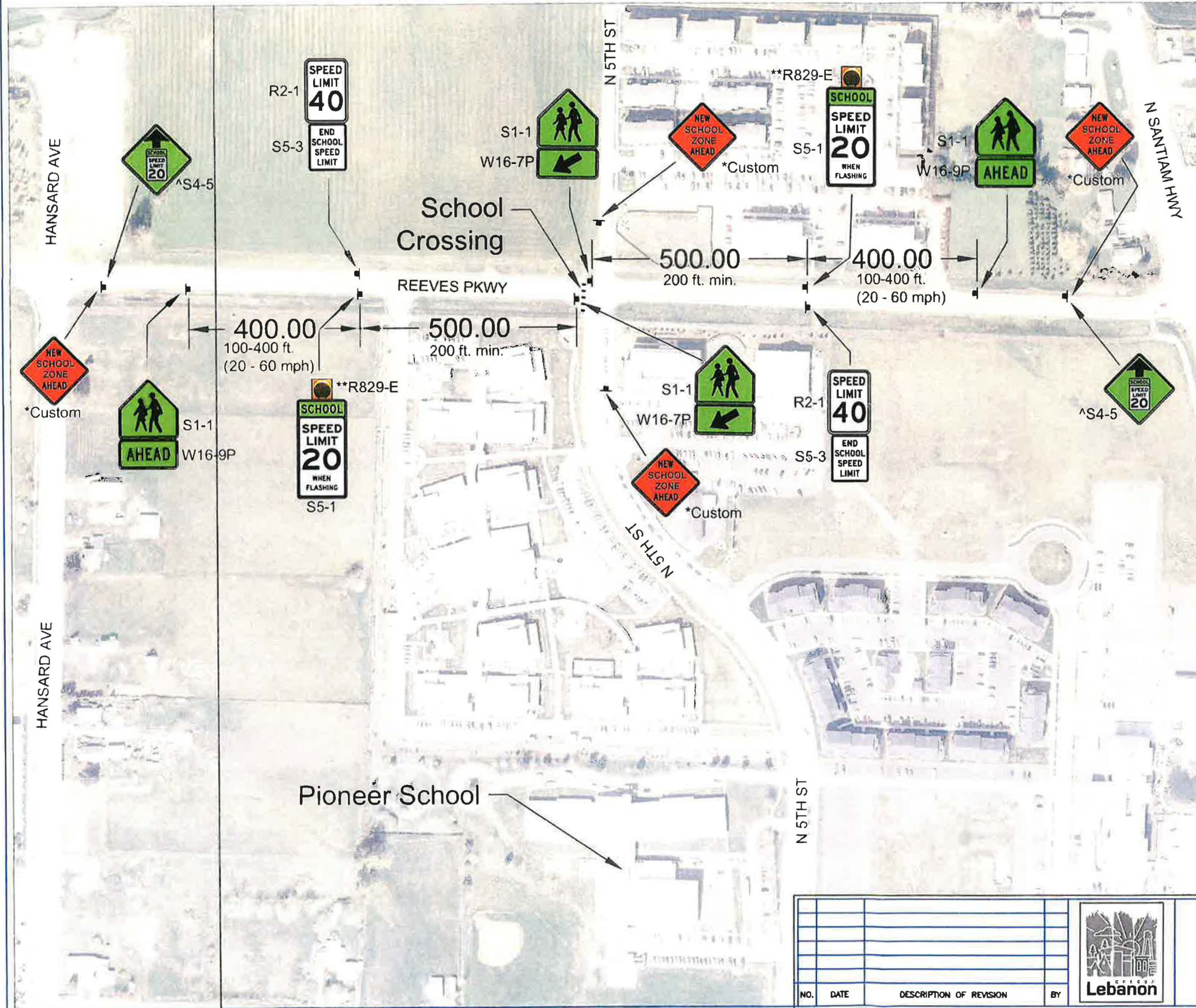
Jason Bolen, Council President

ATTESTED:



Kim Scheafer, MMC, City Clerk

Proposed Signage on Reeves Parkway



Sign	Sign Designation	Section	Size
School	S1-1	7B.08	36X36
^Reduced School Speed Limit Ahead	S4-5	7B.16	36X36
School Speed Limit XX When Flashing	S5-1	7B.15	24X48
End School Speed Limit	S5-3	7B.15	24X30
Speed Limit	R2-1	7B.15	24X30
*New School Zone Ahead	Custom	N/A	36X36

Plaque	Sign Designation	Section	Size
Diagonal Arrow	W16-7P	7B.12	24X12
Ahead	W16-9P	7B.11	24X12

See Manual on Uniform Traffic Control Devices - 2009 Edition Chapter 7B. Signs

* Two week temporary use

^ Permanent use following temporary placement of "NEW SCHOOL ZONE AHEAD" sign

Flashing Beacon - Single, Solar Powered with Integrated Engine

Beacon Model	Beacon Diameter	Pole	Mounting Height	Panel	Battery	Activation Method
**R829-E	8" Yellow	2.38" - 2.88" OD Round	≥ 15 ft	≥ 12.8W	≥ 14Ah	Calendar

See Manual on Uniform Traffic Control Devices - 2009 Edition Chapter 4L. Flashing Beacons

** Or similar model



NO.	DATE	DESCRIPTION OF REVISION	BY



Addition of School Speed Zone (Reeves Parkway)				SHEET 3	OF 3
DESIGNED BY/DATE K. Shanks October 2019				PROJECT NUMBER	
DRAWN BY/DATE K. Shanks October 2019				FILE NAME	Signage Plan
TITLE Proposed Signage on Reeves Pkwy				SCALE: AS SHOWN	