

A RESOLUTION AMENDING BOUNDARIES OF THE) RESOLUTION NO. 4
SOUTH SANTIAM ENTERPRISE ZONE TO INCLUDE)
A 4.3 ACRE PARCEL OF THE CITY OF ALBANY) for 2000~~1~~
AND DECLARING AN EMERGENCY)

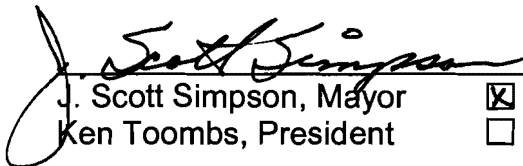
WHEREAS, on October 11, 2000, the Lebanon City Council approved a Resolution (No. 77) expanding the South Santiam Enterprise Zone to include portions of the City of Albany and City of Millersburg for the economic benefit of the City of Lebanon and the area.

WHEREAS, the City of Albany's portion of the South Santiam Enterprise Zone has the opportunity to locate a well known company to its jurisdiction. With the stipulation of adding an additional 4.3 acres to the South Santiam Enterprise Zone.

WHEREAS, amending Resolution No. 77 to add the additional parcel to the South Santiam Enterprise Zone would have an economic benefit for the entire region.

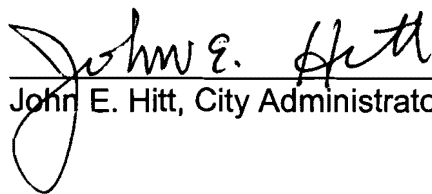
NOW, THEREFORE BE IT RESOLVED by the Lebanon City Council that the South Santiam Enterprise Zone be amended to include the 4.3 acre parcel located in the City of Albany. See attached Exhibit "A" for property description.

Passed by the Council by a vote of 4 for and 1 against and approved by the Mayor this 24 day of January 2001.



J. Scott Simpson, Mayor
Ken Toombs, President

ATTEST:



John E. Hitt, City Administrator

THIS MAP WAS PREPARED FOR
ASSESSMENT PURPOSES ONLY

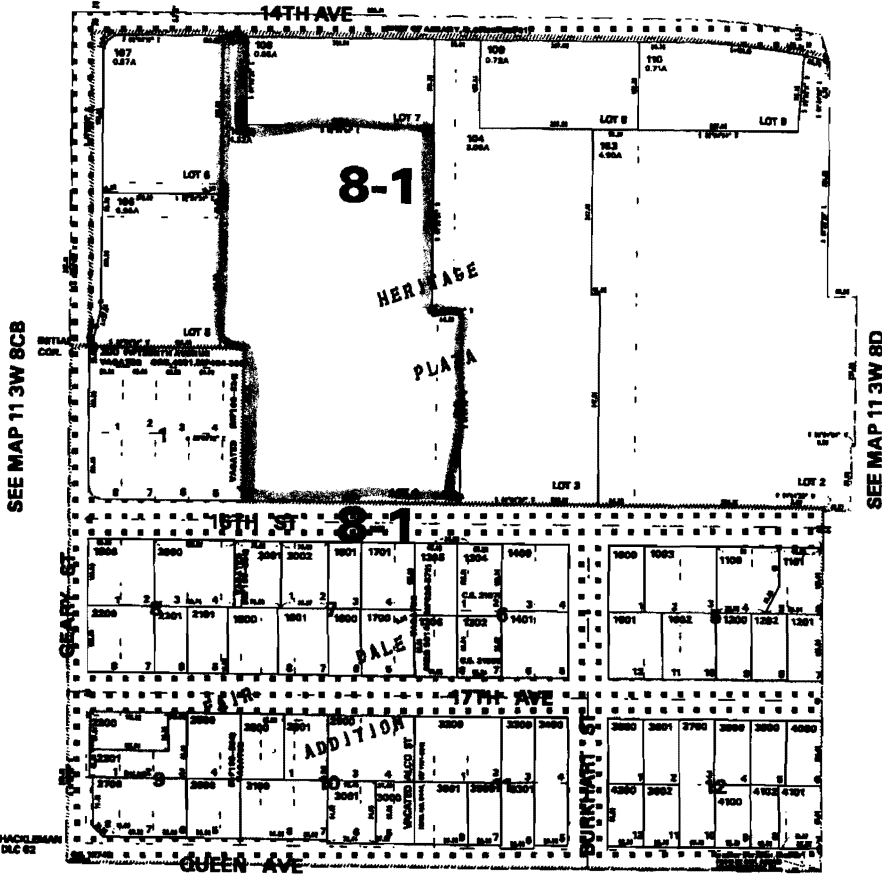
NE1/4 SW1/4 SEC.08 T.11S. R.03W. W.M.
LINN COUNTY, OREGON

1" = 100'

11 3W 8CA
ALBANY

MAP REVISION:
MAP 10/08/00 2-779
COMPLETIONS:
100-102 INTO 103
111 INTO 102
200-400 INTO 200
201-200 INTO 103
1300 INTO 1202
1301 INTO 1200
1303 INTO 1202
1500 INTO 2000
2100 INTO 1500
3401 CLOSE TO STREET
4300 INTO 103

SEE MAP 11 3W 8BD



SEE MAP 11 3W 8CD

ALBANY
11 3W 8CA

10/08/00,08:04:47,Pl