

A RESOLUTION STOPPING TRAFFIC)
ON MAPLE STREET AT THE)
INTERSECTION OF 12TH STREET)

RESOLUTION NO. 8
for 2001

WHEREAS, the City Engineer has recommended stopping traffic on Maple Street at the intersection of 12th Street and,

WHEREAS, such regulation is deemed to be reasonable and necessary for the safe movement of traffic in the City of Lebanon,

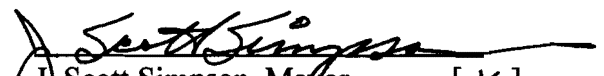
NOW, THEREFORE, BE IT RESOLVED BY THE COUNCIL OF THE CITY OF LEBANON AS FOLLOWS:

West bound traffic on Maple Street shall be stopped at 12th Street. One stop sign shall be installed at the intersection of Maple Street and 12th Street on the east side of the intersection.

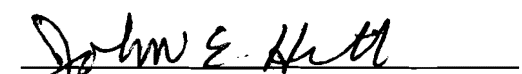
Suitable signs shall be erected and/or markings painted and such designation shall be part of the traffic regulations of the City of Lebanon.

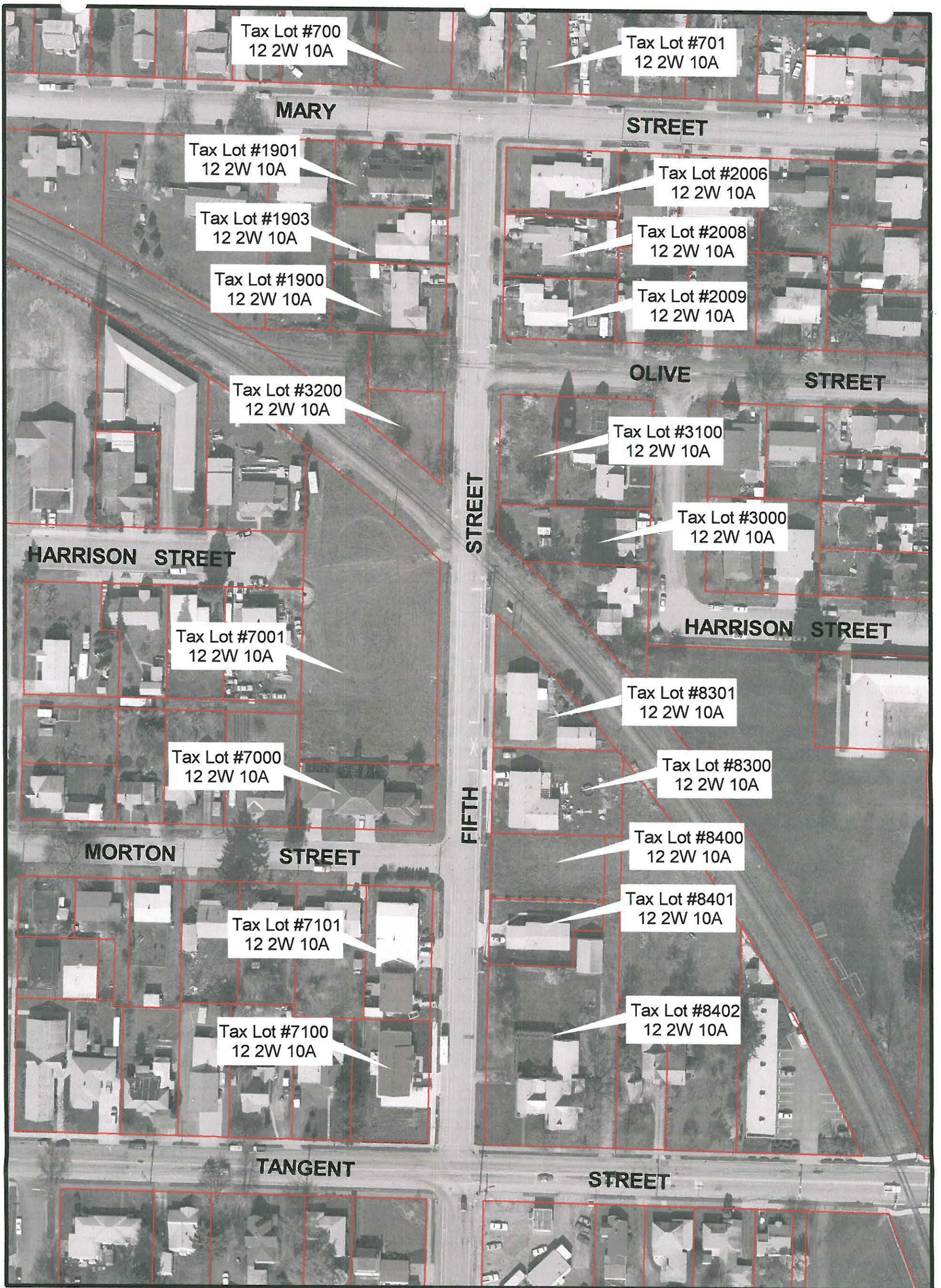
This Resolution supersedes and replaces conflicting portions of previous Resolutions governing traffic control devices at this location.

Passed by the Council by a vote of 5 for and 0 against and approved by the Mayor this 14 day of February, 2001.


J Scott Simpson, Mayor [X]
Ken Toombs, Council President []

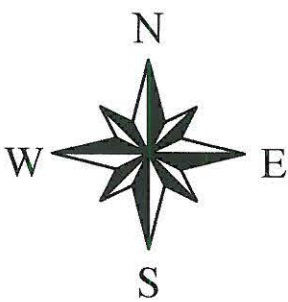
ATTEST:


John E. Hitt, City Recorder



FIFTH STREET EXTENSION

Mary Street to Tangent Street



CITY OF
LEBANON

Date of Photography: March 3, 1995
Date of Plot: January 29, 2001

Green Acres
School

12TH STREET

Proposed Stop
Sign



MAPLE STREET



01/08/01
Prepared by: jk
File: u\maple&12th.apr

Proposed Stop
Sign
Maple Street & 12th Street

- Tax lots (lines)
- Canal
- Creek
- Tax lot
- Public ROW
- Lot