

A RESOLUTION ACCEPTING CERTAIN)
PROPERTIES OWNED BY LINN COUNTY)
WITHIN THE CITY OF LEBANON)

RESOLUTION NO. 33

WHEREAS, the Linn County Board of Commissioners has reached a decision that certain properties acquired due to tax foreclosure within the city of Lebanon are not needed by the county for public use; and

WHEREAS, Linn County has offered these same properties to the City of Lebanon for public use; and

WHEREAS, the governing body of the city of Lebanon deems it expedient and for the best interest of the City of Lebanon to acquire ownership of these properties; and

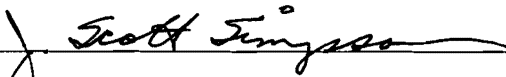
WHEREAS, these properties need to be accepted by lawful authority;

NOW THEREFORE, be it resolved by the City of Lebanon as follows:

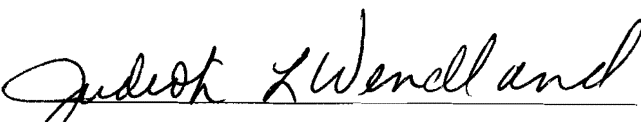
Section 1. The governing body of the City of Lebanon hereby determines that it is expedient, and for the best interests of the City to accept the following listed properties from Linn County for the purposes listed.

<u>Map & Tax Lot</u>	<u>Acct. #</u>	<u>Planned Use</u>
12-02W-09DA, TL 1311	724910	Addition to adjacent city owned property
12-02W-09DA, TL 1319	728135	Addition to adjacent city owned property

Passed by the Council of the City of Lebanon by a vote of 5 for and 0 against, and approved by the Mayor this 13th day of October, 1999.



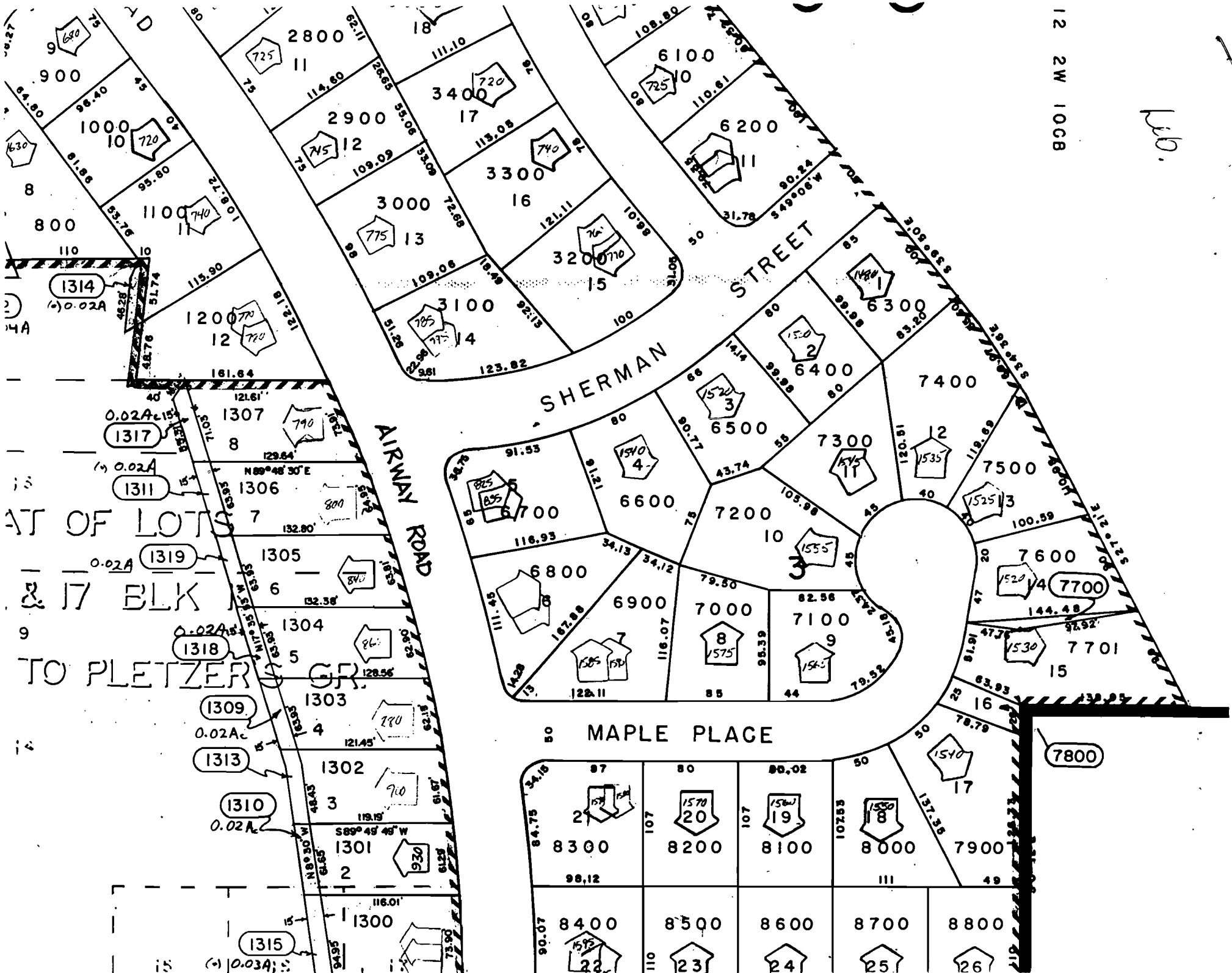
Mayor



City Recorder

12 2W 10CB

100.



AT OF LOTS 7
& 17 BLK
TO PLETZER GR.

SHERMAN STREET

AIRWAY ROAD

MAPLE PLACE