

A RESOLUTION RESTRICTING STREET )  
PARKING ON A PORTION OF MAIN ST. )

RESOLUTION NO. 14  
for 1992

WHEREAS, the City Engineer has recommended that parking be prohibited on a portion of S. Main Street between Maple Street and Oak Street; and,

WHEREAS, such regulation is deemed to be reasonable and necessary for the safe movement of traffic in the City of Lebanon,

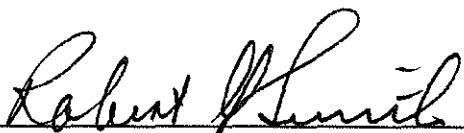
NOW, THEREFORE, BE IT RESOLVED BY THE COUNCIL OF THE CITY OF LEBANON AS FOLLOWS:

Parking shall be restricted to 15 minute parking on a portion of S. Main Street between Maple Street and Oak Street. Specifically the east side of S. Main Street beginning 10 feet south of the Maple Street right of way line and extending 15 feet south.

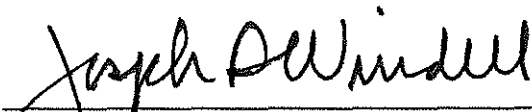
Suitable signs shall be erected and/or markings painted and such designation shall be part of the traffic regulations of the City of Lebanon.

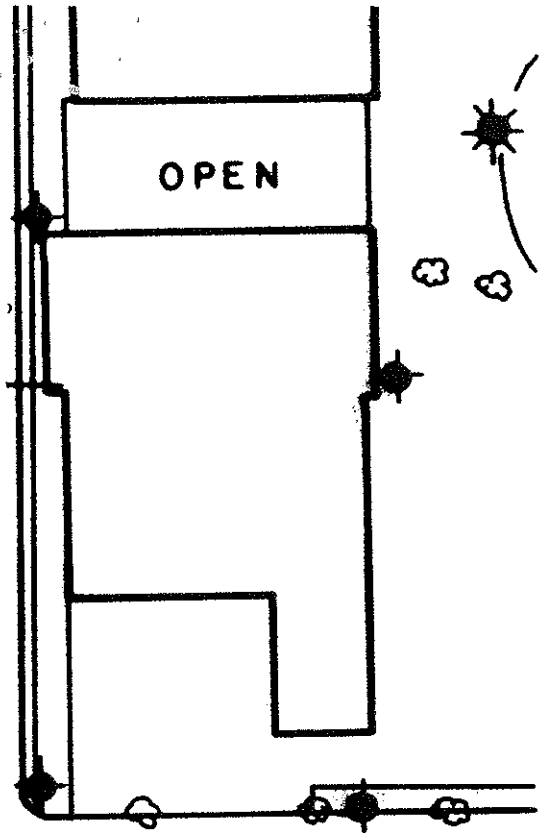
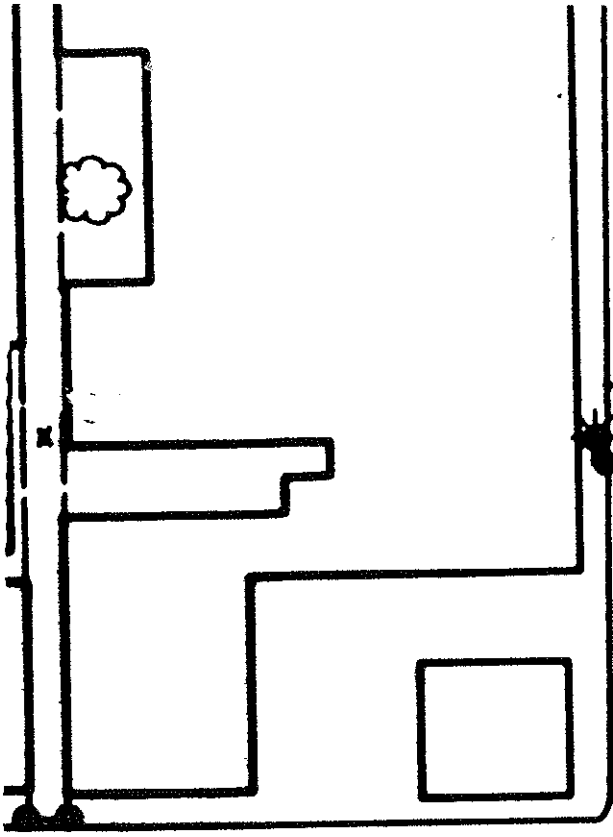
This Resolution supersedes and replaces conflicting portions of previous Resolutions governing parking at this location.

Passed by the Council by a vote of 5 for and 0 against and approved by the Mayor this 25th day of March, 1992.

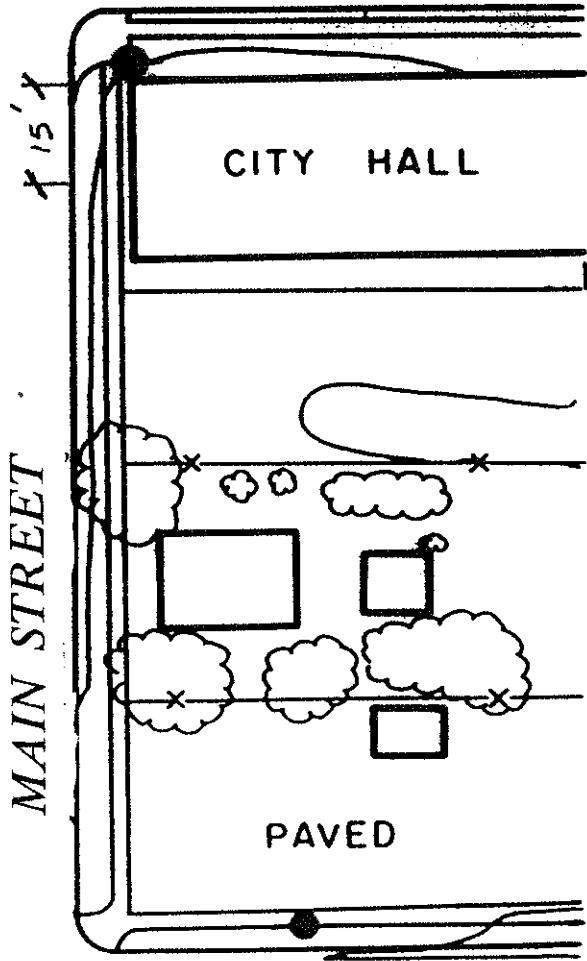
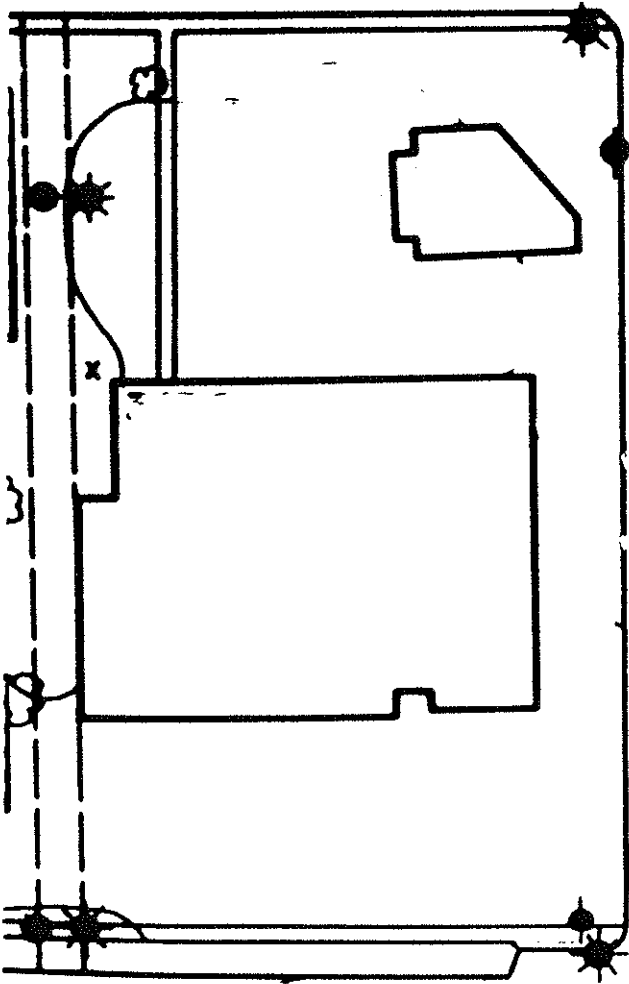
  
\_\_\_\_\_  
Mayor

ATTEST:

  
\_\_\_\_\_  
City Administrator



MAPLE STREET



MAIN STREET

OAK STREET



NOT TO SCALE