

A RESOLUTION PROHIBITING STREET)
PARKING ON A PORTION OF 2ND ST.)

RESOLUTION NO. 44
for 1991

WHEREAS, the City Engineer has recommended that parking be prohibited on a portion of Second Street between Maple Street and Oak Street; and,

WHEREAS, such regulation is deemed to be necessary for the safe movement of traffic in the City of Lebanon,

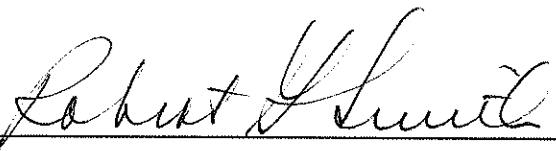
NOW, THEREFORE, BE IT RESOLVED BY THE COUNCIL OF THE CITY OF LEBANON AS FOLLOWS:

Parking shall be prohibited on the east side of Second Street beginning at a point 62 feet from the southern curb line of Maple Street and extending southward a distance of 20 feet.

Suitable signs shall be erected and/or markings painted and such designations shall be part of the traffic regulation of the City of Lebanon.

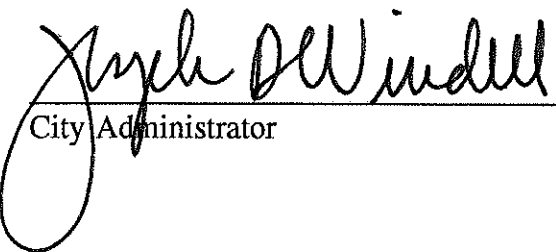
This Resolution supersedes and replaces conflicting portions of previous Resolutions governing parking at this location.

Passed by the Council by a vote of 4 for and 0 against and approved by the Mayor this 11th day of September, 1991.

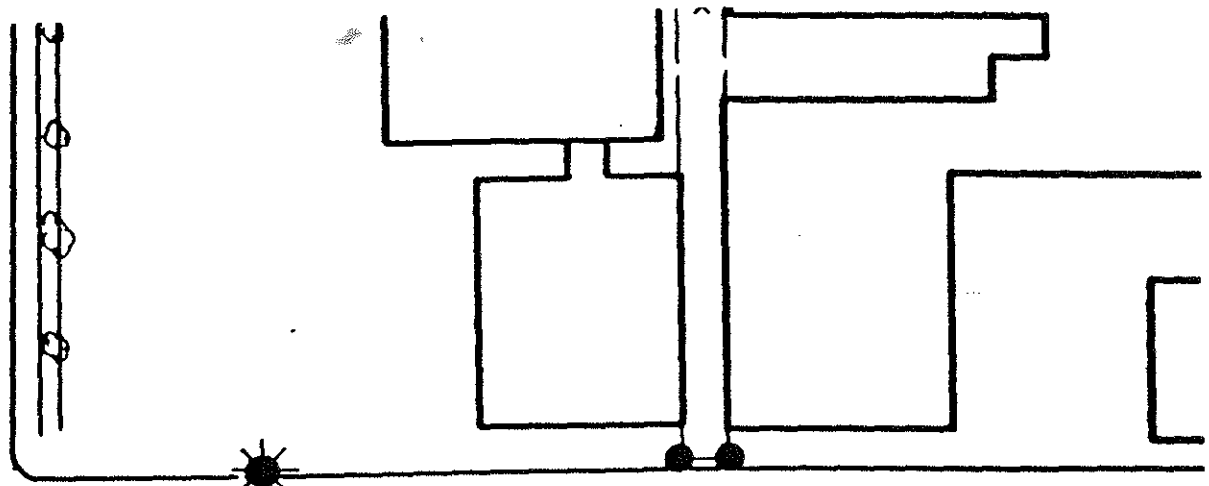


Mayor

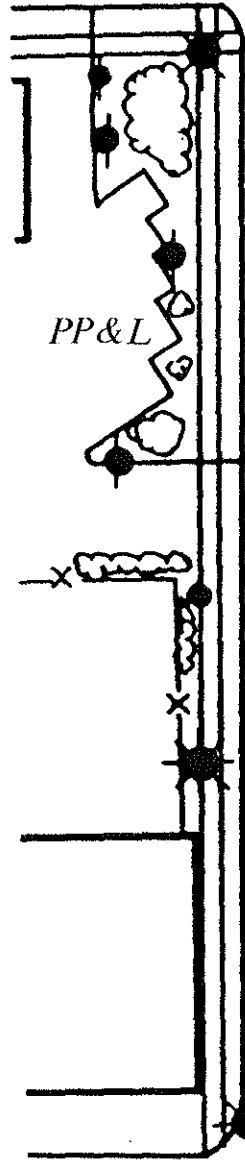
ATTEST:



City Administrator

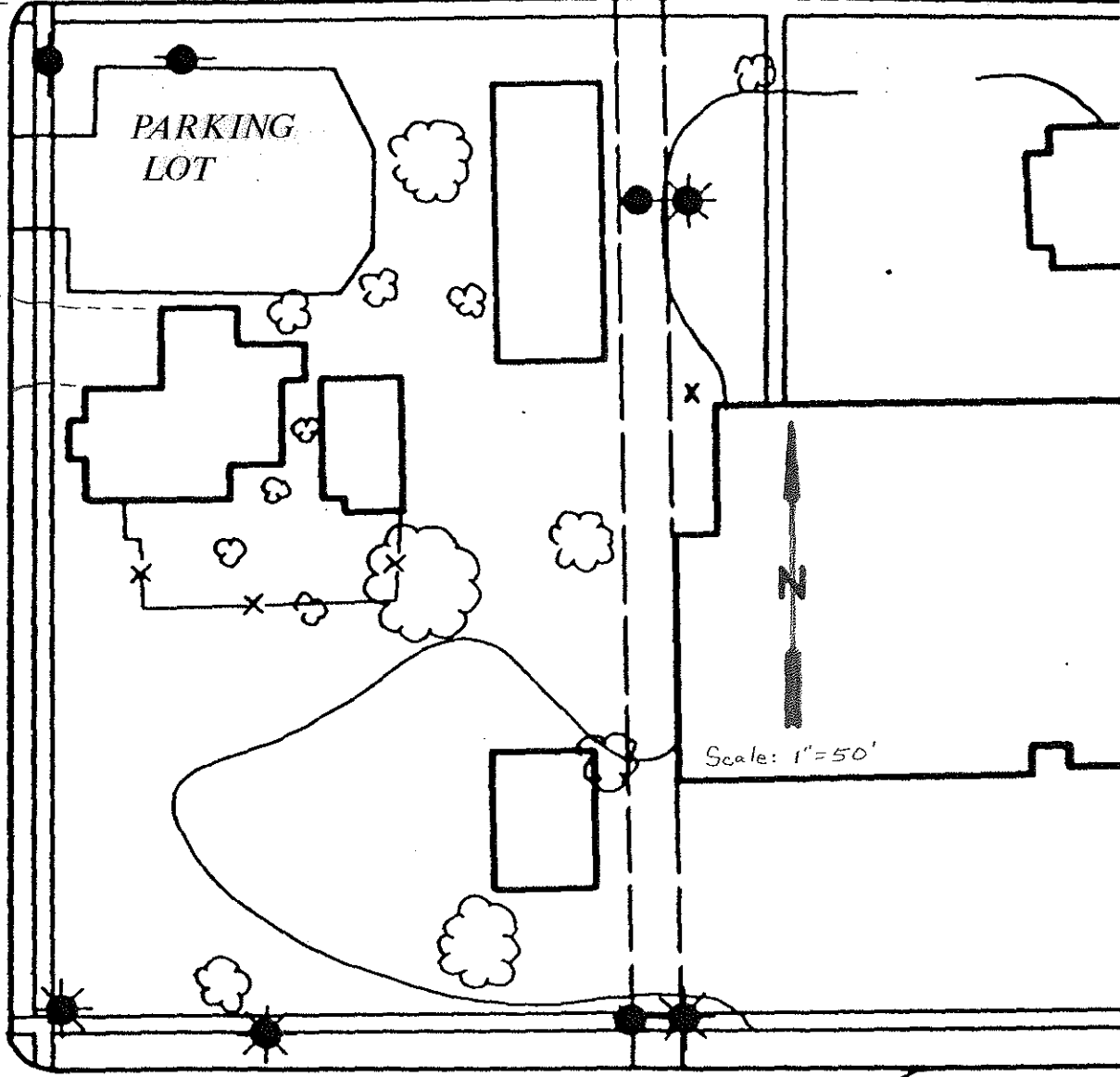


MAPLE STREET



62'
20'
N.P.

2ND STREET



OAK STREET

