

The following figures are included for reference only and were not amended with this rulemaking.

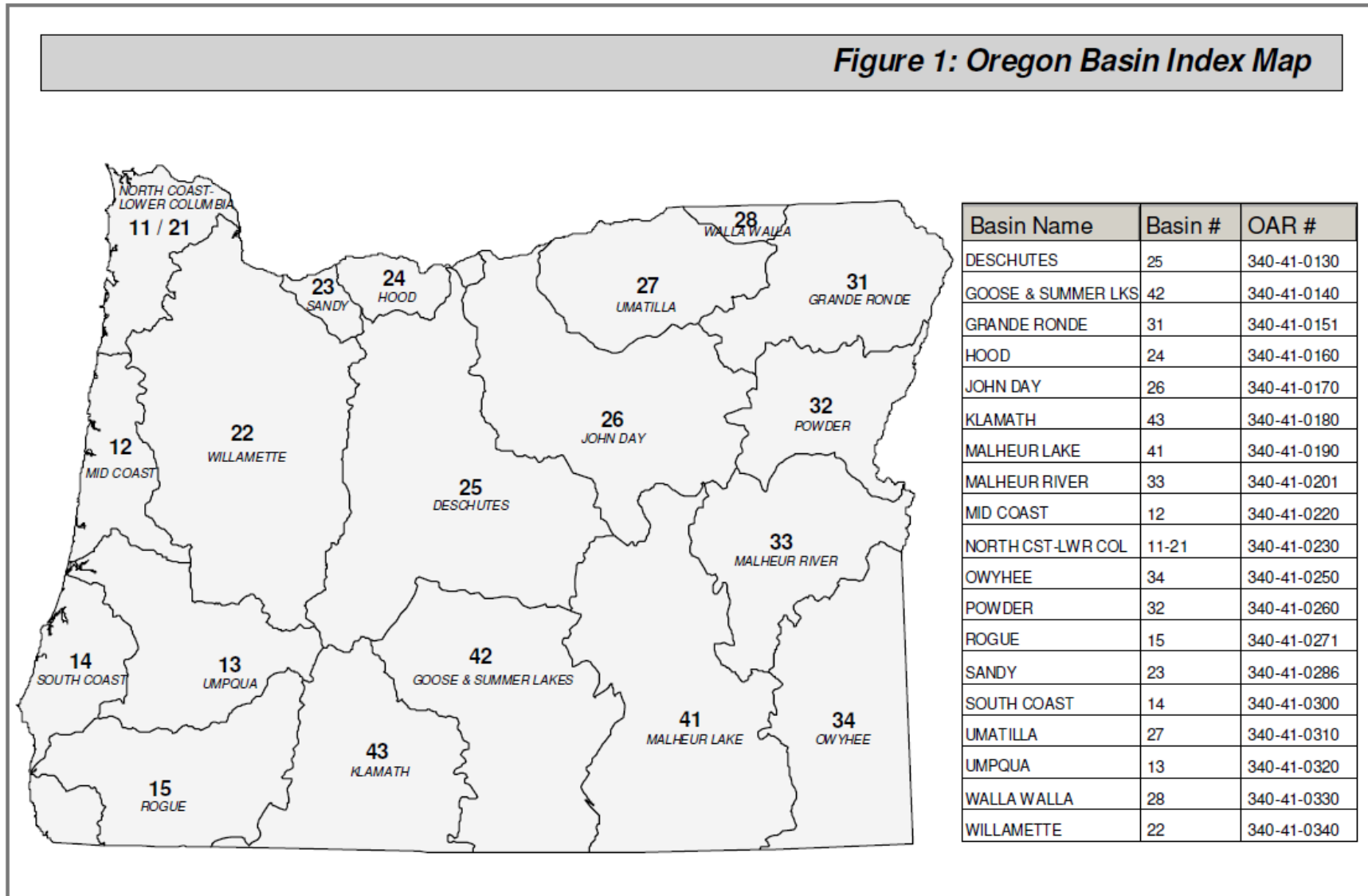


Table 310A
Designated Beneficial Uses
Umatilla Basin
(340-41-0310)

Beneficial Uses	Umatilla Subbasin	Willow Creek Subbasin	West Division Main Canal – constructed channel³	West Division Main Canal – overflow channels³
Public Domestic Water Supply ¹	X	X		
Private Domestic Water Supply ¹	X	X		
Industrial Water Supply	X	X	X	X
Irrigation	X	X	X	X
Livestock Watering	X	X	X	X
Fish & Aquatic Life ²	X	X		
Modified Aquatic Habitat				X
Wildlife & Hunting	X	X	X	X
Fishing	X	X		
Boating	X	X (at mouth)		
Water Contact Recreation	X	X	X	X
Aesthetic Quality	X	X	X	X
Hydro Power	X	X	X	X
Commercial Navigation & Transportation				
¹ With adequate pretreatment (filtration & disinfection) and natural quality to meet drinking water standards.				
² See also Figures 310A and 310B for fish use designations for this basin. Note: The fish & aquatic life use designations for the West Division Main Canal in this table supersede Figure 310A, which incorrectly identifies Redband trout use in the canal.				
³ The West Division Main Canal extends from the point of diversion from the Umatilla River to the confluence with the Columbia River. The canal consists of two segments. The constructed channel segment extends from the Umatilla River 27 miles down gradient to the flow control gate at the end of the concrete structure as it was originally built (concrete-lining was later added to parts of the overflow channels). The overflow channels segment extends from the lower end of the constructed channel to the outflow to the Columbia River.				

Table revised April 2012

Figure 310A: Fish Use Designations*
Umatilla Basin, Oregon

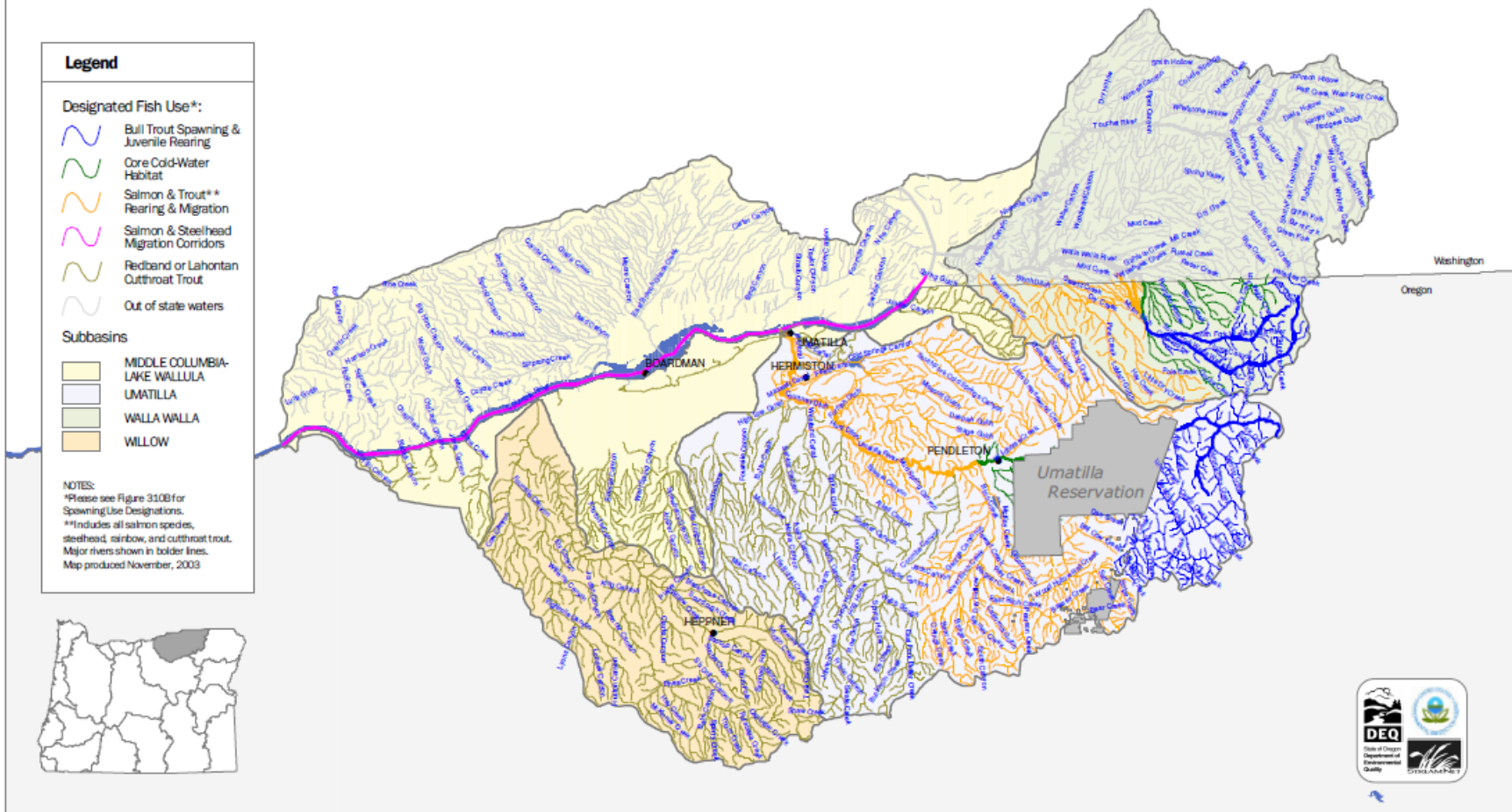


Figure 310B: Salmon and Steelhead Spawning Use Designations*
 Umatilla Basin, Oregon

