

AGENDA
CITY OF BROOKINGS
PARKS AND RECREATION COMMISSION MEETING
Council Chamber - 898 Elk Drive
July 25, 2013 - 7:00 pm

I. CALL TO ORDER

II. PLEDGE OF ALLEGIANCE

III. ROLL CALL

IV. APPROVAL OF MINUTES

Minutes of May 23, 2013

V. PUBLIC APPEARANCES

VI. REGULAR AGENDA

A. Unleashed Dog area in Stout Park

VII. INFORMATION UPDATES/DISCUSSION ITEMS

A. Festival of Art in Stout Park

B. Bear Sculpture at Oasis Park

C. Alder Street - Boulder Park ROW

D. Insect Infestation

VIII. STAFF UPDATES

IX. COMMISSIONER REPORTS/COMMENTS

X. ADJOURNMENT

MINUTES
BROOKINGS PARKS AND RECREATION COMMISSION
May 23, 2013

CALL TO ORDER

Chair Patricia Brown called the meeting to order at 7:03pm followed by the Pledge of Allegiance

ROLL CALL

Present: Commissioners Garth Richey, Don Vilelle and Chair Patricia Brown

Also present: Parks/Tech Services Supervisor Tony Baron

APPROVAL OF MINUTES

A. Motion made to approve the minutes of February 21, 2013 as written; motion seconded and Commission voted; the motion carried unanimously.

PUBLIC APPEARANCES

None

REGULAR AGENDA

- A. Tree Removal at Stout Park - Tony Parrish requested removal of two Tanoaks, a Madrone, and Cascara tree at Stout Park. Tree removal are would open up area, improve view, provide more sunlight, remove tree hazards and enable Stout Mountain Railway to expand their railway lines. Cost of tree removal would be \$450 with the Railway willing to pay half. Commissioner Vilelle wondered if trees would be replaced, Tony advised that they are planting trees and shrubs in the park, and that the trees removed will not be noticed. Tony Baron had no objections to the trees removal. **Commissioner Ritchey made a motion to approve the request to remove the four trees assuming that it will cost the City no more than \$225 and that Desi's tree service will in fact clean up all the branches and debris; motion seconded by Commissioner Vilelle and Commission voted; the motion carried unanimously.**
- B. 2013 Pool Schedule & Fees - Tony Baron provided the 2013 revised pool schedule. The new pool manager has made suggestions and changes to improve the pool and make it more kid friendly. Pool still operating at a loss, hoping with improved management and implementation of a more family oriented area to increase attendance. **Commissioner Vilelle made a motion to approve the revisions; motion seconded by Commissioner Ritchey and Commission voted; the motion carried unanimously.**
- C. Bear Sculpture at Oasis Park - Tony Baron advised that Mike Woodstra has provided plans for a bear sculpture with a planter in the top that is on a concrete pad and removable and proposes installing it in Oasis Park. Commissioners concern is that kids will climb it, Tony advises the surface is smooth and the branch is strong and not very high if a child were to climb it; said kids typically do not hang around Oasis Park, it's more a place where families stop and take photographs of the downtown bears . **Commissioner Ritchey made a motion to approve and forward a recommendation to City Council for the installation of a bear sculpture at Oasis Park donated by local artist, Mike Woodstra; motion seconded by Commissioner Vilelle and Commission voted; the motion carried unanimously.**

INFORMATION UPDATES/DISCUSSION ITEMS

- A. Alder Street ROW - Tony Baron advised that this ROW also known as Boulder Park is difficult to maintain with the boulders on the grass and wanted to get the Commissions feelings on possibly removing the boulders. Believed the boulders were originally placed there to keep cars from parking on the grassy area and now that the grass is established the boulders could be removed and used elsewhere in City. To be discussed again at a later date.

- B. Chetco Overlook - Tony Baron advised that the ODOT ROW Maintenance Agreement starts July 1. City will now take care of the Hwy 101 ODOT right of way from Chetco Bridge to Harris Beach which entails mowing, street sweeping, sidewalk/curb /gutter, and storm/sewer maintenance. City hiring a seasonal employee to assist with the maintenance. Chetco Overlook area will be accessible for maintenance.
- C. Fire Hydrants Painted - Tony Baron showed photographs of fire hydrants that had been painted by the Public Arts Committee for use in an off leash dog park area which has been discussed in the past. He indicated that the grass area of Stout Park is looking to be the best location as there are no children activities in the area or possibly the grassy area in Easy Manor Park behind the restrooms if it was fenced. The Commission had previously approved a change in the Brookings Municipal Code to allow for an off leash dog park.
- D. Insect Infestation- Leaf Rollers and Redheaded Azalea Caterpillars are eating all the tender new growth on all of the native azaleas in Stout Park and Azalea Park. Full Spectrum Landscaping will be spraying the parks twice, now and in September when they typically hatch. Unknown if azaleas have been previously infested, Tony Baron to check into a possible bug that would eat the caterpillars and leaf rollers so spraying is not forever necessary.

STAFF UPDATES

- Have hired Dennis Tippits full time to work park maintenance and have also hired a seasonal employee for the next four months working parks and streets.

COMMISSIONER REPORTS/COMMENTS

Chair Brown - Regrets that the Garden Club did not have time to spread bark mulch before the Azalea festival, but thought everything looked great around town. Don Vilelle volunteered to spread bark mulch by Bankus fountain after the festival.

ADJOURNMENT

With no further business before the Commission, the meeting adjourned at 7:51pm.

Respectfully submitted,

Patricia Brown, Chair
(approved at July 25, 2013 meeting)

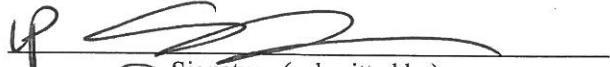
CITY OF BROOKINGS

PARKS & RECREATION COMMISSION

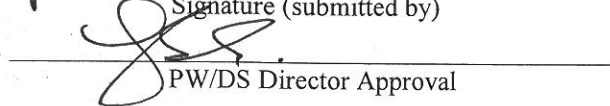
AGENDA REPORT

Meeting Date: July 25, 2013

Originating Dept: Parks



Signature (submitted by)



PW/DS Director Approval

Subject: Stout Park Unleashed Area

Motion: To forward a recommendation to City Council supporting the development of an Unleashed Area at Stout Park.

Background/Discussion: In March of 2013 Council followed the recommendation from the Parks and Recreation Commission to approved a change to the BMC and allow for designated areas for unleashed dogs in parks. Stout Park is one of three areas under consideration and currently the only location fit for the development of an unleashed area.

The Unleashed Area to include:

- Bench
- Watering station
- Trash receptacle
- Doggie Pot bag dispenser
- Unleashed Area information sign board including rules and announcements.
- Boundary signage identifying boundary of Unleashed Area
- Dummy fire hydrant supplied by Public Art Committee

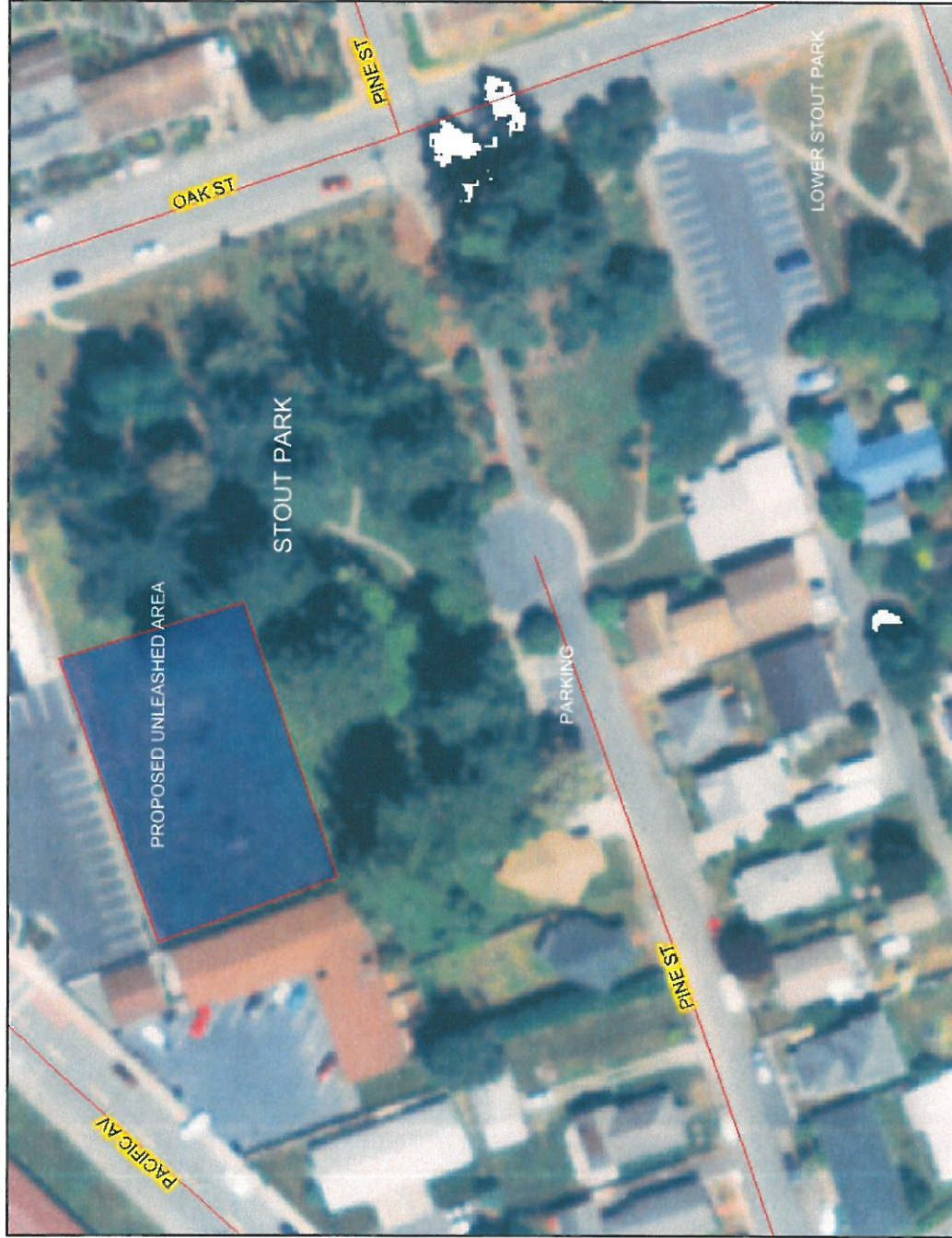
Financial Impact:

\$1500 - \$2500 from Parks C.I.P. budget

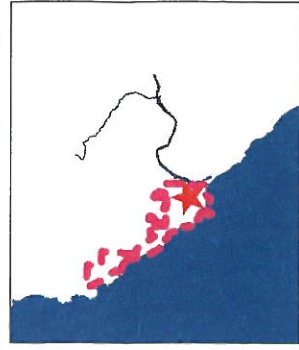
Attachments:

- a. Stout Park Map,
- b. Sample Unleashed Area Rules

Stout Park - Unleashed Area



Map center: 42° 3' 17.4" N, 124° 16' 48.1" W



- Legend**
- RIVERS
 - ROADS
 - URBAN GROWTH BOUNDARY
 - OCEAN



Scale: 1:1,100

This map is a public resource of general information. Use this information at your own risk. Curry County makes no warranty of any kind, expressed or implied, including any warranty of merchantability, fitness for any particular purpose or any other matter.



Stout Park Unleashed Area

Daily

Unleashed Area Rules

- Dogs must demonstrate appropriate social interaction.
- Dogs displaying aggressive behavior toward people or other dogs must be leashed and removed from the Dog Park immediately.
- Owners and handlers must accept responsibility for any damage or injury caused by their dog.
- Dogs must display tags showing proof of current license and rabies vaccination.
- Bring no more than two dogs to the Unleashed Area at any time.
- Owners and handlers must remain in the Unleashed Area to supervise pets, and keep them within view and under verbal control at all times.
- To prevent injury, remove pinch or choke collars when playing off leash.
- For health and safety reasons, do not bring a dog in heat to a Brookings park.
- For health and safety reasons, do not bring a puppy without a complete cycle of vaccinations to a Brookings park.
- Children must be closely supervised
- Be considerate of park neighbors by playing quietly with dogs in the early morning and evening hours.
- Comply with all other park rules.