

**AGENDA**  
**CITY OF BROOKINGS**  
**PARKS AND RECREATION COMMISSION MEETING**  
**Council Chamber - 898 Elk Drive**  
**September 25, 2014 - 7:00 pm**

**I. CALL TO ORDER**

**II. PLEDGE OF ALLEGIANCE**

**III. ROLL CALL**

**IV. APPROVAL OF MINUTES**

Minutes of July 24, 2014

**V. PUBLIC APPEARANCES**

**VI. REGULAR AGENDA**

- A. A Carousel in Azalea Park
- B. Memorial Benches in Azalea Park

**VII. INFORMATION UPDATES/DISCUSSION ITEMS**

- A. Introduce Rare Participant – Austin Dunn
- B. Mapping of Azaleas and Trees in Azalea Park

**VIII. STAFF UPDATES**

- A. November meeting date change to November 20th

**IX. COMMISSIONER REPORTS/COMMENTS**

**X. ADJOURNMENT**

MINUTES  
BROOKINGS PARKS AND RECREATION COMMISSION  
July 24, 2014

**CALL TO ORDER**

Chair Patricia Brown called the meeting to order at 7:02pm followed by the Pledge of Allegiance.

**ROLL CALL**

*Present:* Commissioners Trace Kather, Garth Richey, and Chair Patricia Brown

*Absent:* Commissioner Don Vilelle

*Also present:* Parks/Tech Services Supervisor Tony Baron

**APPROVAL OF MINUTES**

**A. Motion made to approve the minutes of February 27, 2014 as written; motion seconded and Commission voted; the motion carried unanimously.**

**PUBLIC APPEARANCES**

Forest Duncan of Harbor appeared before the commission expressing interest in the dog park at Stout Park, and would like to have the park dedicated to the late Catherine Powers, dog lover and Manager of the Curry County Animal Shelter. He also volunteered to help make dog park happen. Tony advised that the park has been approved, but fencing the area is required which he is in the process of trying to budget for, with hopes of accomplishing by September/October. Commission had previously agreed to dedicate park to Catherine.

**REGULAR AGENDA**

None

**INFORMATION UPDATES/DISCUSSION ITEMS**

**A. Park Master Plan Update/Addendum - To include trails and recreation programming**  
Tony discussed desire of his and Loree Pryce's to develop a hiking trail map into the Parks Master Plan, which would be part of a RARE students job that we are currently interviewing for. Also part of the RARE position is to research and develop a plan to create a City recreation program utilizing City parks and facilities. Commission agreed those were good ideas.

**STAFF UPDATES**

- A. Stout Park lighting & power CIP project** – Tony advised that four electrical pedestals are being installed at Stout Park, which is being readied for the Art in Stout Park Festival, Aug 2 and 3<sup>rd</sup>, with 70 vendors. The lights poles will be installed in late August.
- B. OPRD grant application** – Tony advised that he had applied for two grants this year for Azalea Park, Phase I and neither had been granted. He plans to scale project down and reapply next year.
- C. Bench installation at Chetco Point Park** – On hold until WWTP slope stabilization project is complete, probably in September/October.

**COMMISSIONER REPORTS/COMMENTS**

Commissioner Kather – wondered if there had been any interest in installing exercise program functional movement equipment, like pull ups bars, balance beams, and/or a climbing wall in parks next to trails. Tony advised the idea had previously been discussed and could be pursued again. He believes there are areas in Azalea and Stout Park that could accommodate those items.

Commissioner Richey – is impressed with the parks and how many people are using them. He appreciates the effort that is being made by the group that is pursuing a new pool plan.

Tony advised the pool is doing well this summer and is being used more by the public and swim lesson programs filling up. Tony would like to schedule a walk-thru of Azalea Park with the Commissioners to review some projects that are planned for the area. Date to be determined.

### **ADJOURNMENT**

With no further business before the Commission, the meeting adjourned at 7:28 pm.

Respectfully submitted,

---

Patricia Brown, Chair  
(approved at September 25, 2014 meeting)

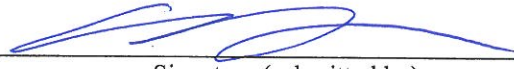
# CITY OF BROOKINGS

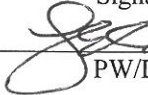
## PARKS & RECREATION COMMISSION

### AGENDA REPORT

Meeting Date: September 25, 2014

Originating Dept: Parks

  
\_\_\_\_\_  
Signature (submitted by)

  
\_\_\_\_\_  
PW/DS Director Approval

---

Subject: A Carousel in Azalea Park

Motion: Forward to City Council support from the Parks & Recreation Commission for the location of a Carousel in Azalea Park.

Background/Discussion: A Carousel for Brookings, an Oregon non-profit corporation, is requesting the City of Brookings consider the location of an antique two to three row carousel in Azalea Park. The carousel will be secured in a fully enclosed pavilion approximately sixty feet in diameter adjacent to Kidtown and restrooms (see map). The group will bear all cost associated with the installation of the pavilion and carousel as well as commit to a long term agreement requiring all operation, maintenance and capital improvement costs are the responsibility of the group.

Attachments:

- a. Letter of Request
- b. Location Map
- c. Pavilion Example
- d. Carousel Brochure

## A CAROUSEL FOR BROOKINGS, Inc.

P.O. Box 616  
Brookings, OR 97415

(541) 469-0321



### LETTER OF INTENT

We are pleased to inform you that the organization known as A CAROUSEL FOR BROOKINGS INC. is incorporated with the Secretary of State of Oregon. The organization is a non-profit corporation and has tax exempt status from the Internal Revenue Service.

In preliminary plans, we are making an inquiry at this point, as to whether the City of Brookings has property available at Azalea Park to locate a carousel. We anticipate a Carousel for Brookings Inc. will need approximately one fourth to one half acre. We will need access to electricity, water, and parking in the vicinity. We feel that the carousel will be a great asset for the city and Azalea Park, and would to like you to be a part of this great project.

At this point in time we are not asking for dedication of property, but would instead consider dedicating the Carousel to the City and Azalea Park for use by the public.

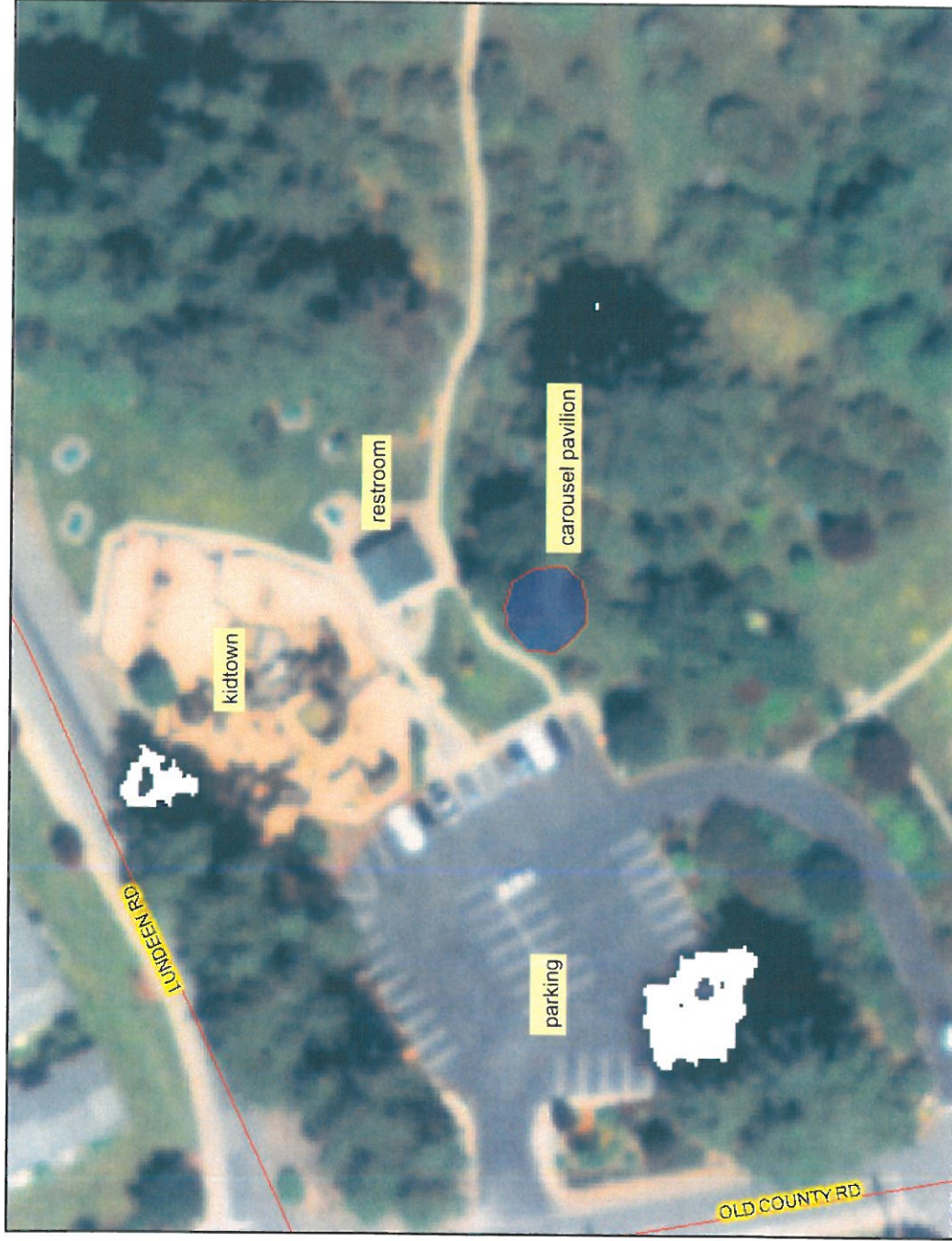
Thank you for your consideration.

Sincerely,

  
Richard A. Halliday  
A CAROUSEL FOR BROOKINGS, INC.



# Carousel - Azalea Park



This map is a public resource of general information. Use this information at your own risk. Curry County makes no warranty of any kind, expressed or implied, including any warranty of merchantability, fitness for any particular purpose or any other matter.

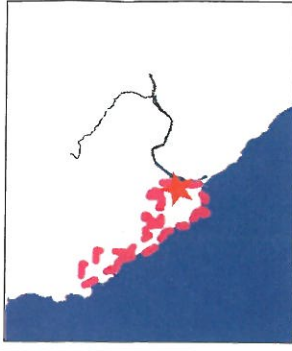
Map center: 42° 3' 30.23" N, 124° 16' 30.8" W



Scale: 1:822

## Legend

- RIVERS
- ROADS
- URBAN GROWTH BOUNDARY
- OCEAN





Outdoor Space Redefined

products | market gallery | poligon advantage | drawings | literature | find rep | find installer | request quote

Clerestory Pavilion

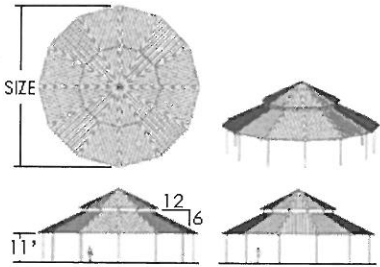
twelve sided, two tiered pavilion, hip roof

PLC

- squares
- rectangles
- hexagons
- octagons
- dodecagons
- trellises
- via series
- small shelters
- specialty
- custom
- shelter options
- wood shelters
- fabric shelters



PLC 66 CUSTOM



Standard Dimensions		Download Type			
BIN	Size				
PLC 50		<a href="#">eDr</a>	<a href="#">PDF</a>	<a href="#">Dwg</a>	<a href="#">SKP</a>
PLC 60		<a href="#">eDr</a>	<a href="#">PDF</a>	<a href="#">Dwg</a>	<a href="#">SKP</a>
PLC 66		<a href="#">eDr</a>	<a href="#">PDF</a>	<a href="#">Dwg</a>	<a href="#">SKP</a>
PLC 72		<a href="#">eDr</a>	<a href="#">PDF</a>	<a href="#">Dwg</a>	
PLC 86		<a href="#">eDr</a>	<a href="#">PDF</a>	<a href="#">Dwg</a>	

Shelter Sizes Also Available in Increments of 1'

[Picnic Table Capacity](#)

[Product Cut Sheet](#)



frame

roof

decorative

functional

home

|

about us

|

site map

|

©2014 porter corp.

|

factory specials

\$ 89,000



# ANTIQUE CAROUSELS FOR SALE



## TWO AND THREE ROW MACHINES 1920s ALLAN HERSCHELLS

Many to choose from. Two and Three row machines, 36'-40'. These are great pieces for a city or smaller park wanting a historic carousel at a friendly price. These machines come and go fast so inventory changes all the time. Photos show here are part of current inventory.



**BRASS RING  
ENTERTAINMENT**  
*America's Traditional Carousel Builders*

**BRASS RING ENTERTAINMENT**  
11001 PEORIA STREET, SUN VALLEY, CA 91352  
phone: 818-394-0028 • fax: 818-332-0062  
email: sales@carousel.com • www.carousel.com



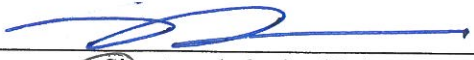
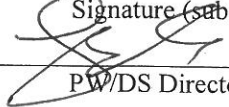
# CITY OF BROOKINGS

## PARKS & RECREATION COMMISSION

### AGENDA REPORT

Meeting Date: September 25, 2014

Originating Dept: Parks

  
\_\_\_\_\_  
Signature (submitted by)  
  
\_\_\_\_\_  
PW/DS Director Approval

---

Subject: Memorial Benches in Azalea Park

Motion: Approve the placement of two curved granite memorial park benches in Azalea Park

Background/Discussion: Meg & Mike Claflin are requesting the City of Brookings consider the location of two curved granite memorial benches in Azalea Park. The benches are to be installed in the vicinity of the Capella. The family will bear all cost associated with the installation of the benches. The benches are to read "In Loving Memory of William Graham, COL,USMC, (ret) and Maggie Graham, from family and friends – 2014"

Attachments:

- a. Letter of Request
- b. Sample Bench

## **Graham Family Memorial Bench Proposal for Azalea Park -2014**

Bill and Maggie Graham settled in Brookings, Oregon, in 1980. The family wishes to have 2 memorial benches erected in their honor in Azalea Park. This was one of Maggie's favorite places in Brookings.

The family wishes to select matching granite benches that meet the specifications of the city. The family will buy the benches, and pay the fee to have them placed at specific locations. We like the "Curved Natural Granite Benches", website picture attached, with specific detail when the photo is clicked. Not only beautiful, they blend well with the park, and should require no maintenance.

We would like to place them near the Cappella. The path leading up to the Cappella from the parking lot has one location on the left (harbor side) that looks ideal; additionally, there is also a location on the right side of the path, near a tree, before the entry to the Cappella. These 2 locations are not only beautiful, offer fabulous views, and were favorite views of our mother, Maggie.

On the benches, each will have a bronze plaque that reads:

"In loving memory of William Graham, COL, USMC, (ret), and Maggie Graham, from family and friends - 2014"

Please contact me, Linda Crosser, 816-522-6766, [lgcrosser@gmail.com](mailto:lgcrosser@gmail.com), with questions or comments.

Meg and Mike Claflin, will also be the on site point of contacts: 541-505- 1235 [mmclaflin@gmail.com](mailto:mmclaflin@gmail.com),

Phone Agents Available Now!

866-855-2284



SKU: 917583

## CURVED NATURAL GRANITE BENCH

**\$599.95**

LIST PRICE \$809.95

FREE SHIPPING!

Provide the perfect seating area for your guests to relax with the Curved Natural Granite Bench. Use as a focal point or pair with other granite products to accessorize your outdoor living space. To clean, simply rinse the outdoor stone bench with water.

Ships in 1 - 2 Business Days