

**AGENDA**  
**CITY OF BROOKINGS**  
**PARKS AND RECREATION COMMISSION MEETING**  
**Council Chamber - 898 Elk Drive**  
**September 24, 2015 - 7:00 pm**

**I. CALL TO ORDER**

**II. PLEDGE OF ALLEGIANCE**

**III. ROLL CALL**

**IV. APPROVAL OF MINUTES**

Minutes of July 23, 2015

**V. PUBLIC APPEARANCES**

**VI. REGULAR AGENDA**

**VII. INFORMATION UPDATES/DISCUSSION ITEMS**

- A. Disc Golf Course
- B. Native Azaleas - Work Plan
- C. Compassionate Friends Park Bench
- D. Foot Wash Station- Mill Beach

**VIII. COMMISSIONER REPORTS/COMMENTS**

**IX. ADJOURNMENT**

MINUTES  
BROOKINGS PARKS AND RECREATION COMMISSION  
July 23, 2015

**CALL TO ORDER**

Chair Patricia Brown called the meeting to order at 7:00pm followed by the Pledge of Allegiance.

**ROLL CALL**

*Present:* Commissioners Tom Bozack, Trace Kather, Dennis Triglia, Don Vilelle and Chair Patricia Brown

Tony Baron introduced new Commissioner Dennis Triglia

*Also present:* Parks/Tech Services Supervisor Tony Baron and Austin Dunn, RARE employee, and members of the public.

**APPROVAL OF MINUTES**

**A.** Minutes corrected on page 2, Information Updates, Section C to read Drew Carter. **Motion made to approve the minutes of May 28, 2015 as corrected; motion seconded and Commission voted; the motion carried unanimously.**

**PUBLIC APPEARANCES**

**A.** Silas Pieper – 17163 Parkview – appeared to request a foot shower at Mill Beach. He has seen lots of sand in the restroom sink causing the drain to clog. Tony Baron advised he will check further into costs and location and place on next meeting's agenda.

**REGULAR AGENDA**

**A. Compassionate Friends Memorial** - Georgia Cockerham presented her request to place a memorial bench and monument in Azalea Park. The monument is on a base, stands @2' high and holds 40 engraved names. They currently have @20 names to be engraved on the monument and additional names can be engraved on it. Commissioners concerned that the monument looks like a headstone and the possibility of vandalism. Georgia advised that the shape of the monument could be rectangular. Commission discussed accepting the bench but not the monument as they believe it will lead to more people wanting to erect memorials. Georgia stated her group would not want to place just the bench as the memorial has the names of the individuals. Commission suggested having the names engraved on the bench and making it a half circle or two benches. **Motion made to approve the bench and monument at Azalea Park, motion seconded, and the Commission voted, one in favor, four opposed; motion fails. Motion made to approve up to two benches, curved if possible to be placed in Azalea Park without the monument and have the names be engraved on the benches if possible; motion seconded and Commission voted; four in favor, one opposed, the motion carries.** Georgia to bring to the next Parks & Rec Commission meeting further details on the bench.

**INFORMATION UPDATES/DISCUSSION ITEMS**

**A. Disk Golf Course – Azalea Park** – Austin Dunn advised the disc golf course recently had its ribbon cutting ceremony. Tee Pads, tee signs and baskets are complete and a kiosk with course map and rules is in progress. An inauguration tournament is scheduled July 25<sup>th</sup>. The back nine fairways have been cut, they still need grooming and the high school robotic class will build nine more baskets this school year. Tony advised he has budgeted for completion of the back nine with the help of volunteers and the project will continue after Austin leaves. He believes it is a positive addition to Azalea Park, encourages park use and will cut down on transients in the park. Austin will be leaving July 31<sup>st</sup>; he thanked the commission for their dedication and plans to continue his degree in landscape architecture and planning.

- B. Azalea Park – Native Azalea Work Plan** – Tony is developing work plans to cut trees and prune azaleas, making plans on getting information out to the public so positive communication is established to educate the public on the project and has scheduled tentative dates for work parties. Plans to include the Master Gardeners, Azalea Park Foundation, the Garden Club, volunteers and the public in the project..
- C. Pickle Ball Lines on Tennis Court** – Paul Wittenmeier, 15709 Pelican Bay Drive, Brookings presented a request to have pickleball lines painted on the tennis courts. Pickleball, played with a paddle and whiffle ball, is becoming popular and a local group plays weekly in the high school gym. The local pickleball group is willing to paint the lines however is approved by the City. Local tennis players advise the additional lines would not be distracting, just not white in color. Tony will go over further details with the group regarding paint color and striping.
- D. Azalea Park Ball Field Reconfiguration** – Tony advised that the City had been awarded a grant from Oregon Parks & Rec for the Azalea Park Ball Field Reconfiguration and many projects are underway. Currently in the process of installing electrical service in the ball field area for the Wild River Music Festival who has donated \$5000 towards the project. The overall budget was projected at \$350,000, the grant is for \$225,000, the remaining amount will be from community support donations, the Softball League, West Family Foundation and the public. Phase I of the project will include a maintenance building, a restroom/concession building, two new backstops, and accessible pathways. This was the second year Tony had applied for this grant and it was ranked 13<sup>th</sup> of 17 funded, and had lots of competition. Hopes that since they granted Phase I they will also grant Phase II when the time comes.

## **STAFF REPORTS**

- A.** Tony advised that staff will be draining the Elmer Bankus fountain and spraying for the weeds. Plan to schedule a time when coordinated with the flushing of fire hydrant so as not to waste water.

## **COMMISSIONER REPORTS/COMMENTS**

Commissioner Vilelle – wondered if plans for reconstruction of Chetco and Fifth Street intersection were still being discussed. Tony advised that he did not know of any.

Commissioner Bozack – questioned if anything further had been determined for a community rec flag football program. Tony advised it is too late to pursue this season and thought the interested group had found another means to establish themselves. Currently no recreational managing/programming is being pursued by the City due to lack of staff and funding. A much larger parks plan is required, City's present aim is to maintain facilities that currently exist, in future that may change. Willing to look into partnership with volunteers/groups to discuss possible future basic recreational programs.

## **ADJOURNMENT**

With no further business before the Commission, the meeting adjourned at 8:12 pm.

Respectfully submitted,

---

Patricia Brown, Chair  
(Approved at September 24, 2015 meeting)

**CITY OF BROOKINGS**  
**Press Release: For immediate release**  
**September 14, 2015**



**MASTER GARDENERS TEAM WITH CITY  
TO OFFER AZALEA EDUCATION AT PARK**

*Volunteers Sought to Help Maintain Historic Azaleas*

Brookings area residents can help improve the condition of the Azalea Park's native azaleas by participating in an education program starting in September, Brookings Parks and Technical Services Supervisor Tony Baron announced.

In collaboration with Curry County Master Gardeners, the City of Brookings will host a series of azalea pruning work parties at Azalea Park beginning Wednesday, September 16. Volunteers are invited to meet in the lower parking lot off Old County Road at 9:00 AM. Work parties will be formed and training will continue through 1:00 PM.

Master Gardeners and City staff will provide educational materials to volunteers and provide basic training in the pruning process.

The program is a result of a visit to Azalea Park by azalea expert Dick "Red" Cavender who evaluated the native azaleas and made recommendations on how to improve their condition. Cavender made a presentation on his findings at a public workshop hosted by the Brookings Parks and Recreation Commission in March.

"Our City's historic azaleas are in dire need of human intervention, especially pruning to encourage more prolific and robust growth, and removal of competing vegetation which has invaded their space," said Parks and Recreation Commissioner and Oregon Master Gardener Dennis Triglia. "If rejuvenating these azaleas is postponed any longer, I fear that additional azaleas may, tragically, be lost."

"Red Cavender's visit was extremely helpful as he provided valuable information for us to move forward and address what is needed to sustain these beautiful plants," Baron said.

"The purpose of the Master Gardeners is to provide public outreach and education and this is a great opportunity to do just that in a landmark park that has great value to the residents of southern Curry County," said Curry County Master Gardener Coordinator Scott Thiemann.

Additional work party dates scheduled so far include Tuesday, September 22, 12:00 PM to 4:00 p.m., and September 28, 9:00 AM to 1:00 PM.

For more information on this project, contact Tony Baron at (541) 469-1159.

**NEWS MEDIA CONTACT INFO:** For further information contact the City Manager office at 541-469-1101.

# What is Happening Here?

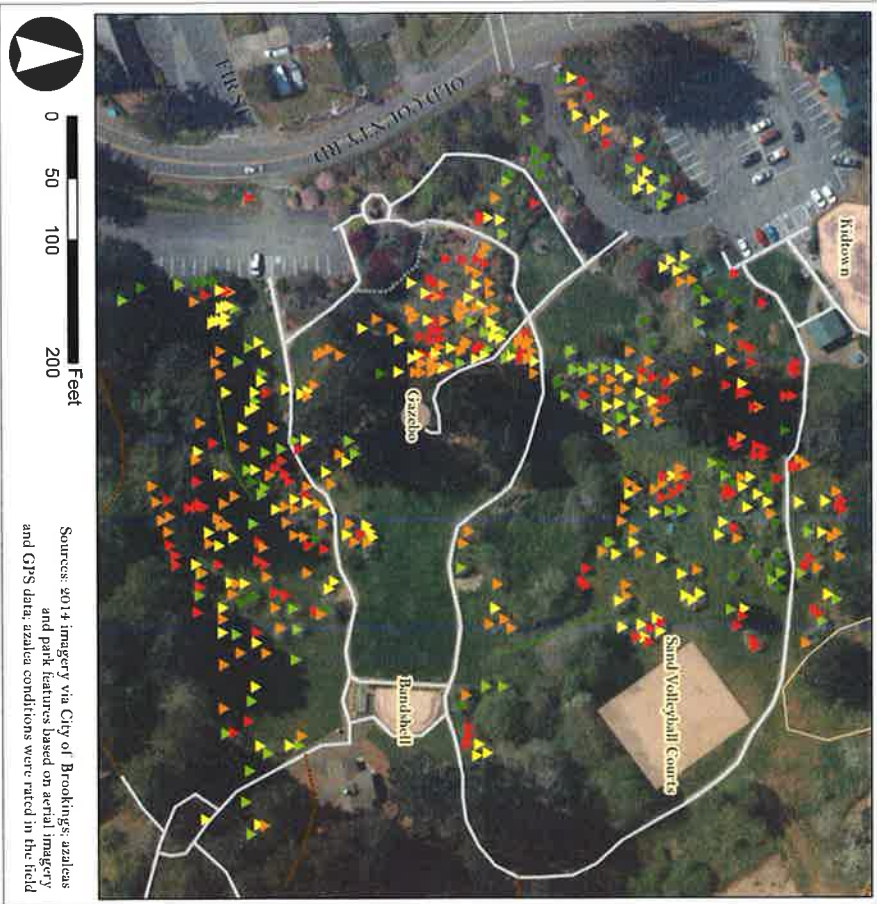
Your park's historic Western Azaleas (*Rhododendron occidentale*) are occasionally in need of human intervention to maintain or improve their health. Careful pruning of old growth coupled with removal of competing invasive vegetation will assist the azaleas to put out new robust growth and will help to ensure their survival for future generations to enjoy!



For questions or comments please contact Tony Baron, Parks and Technical Services Supervisor, at (541) 469-1159 or by e-mail at [abaron@brookings.or.us](mailto:abaron@brookings.or.us)



# Native Azalea Condition Map | Azalea Park



**Azaleas**

- ▲ 1 "Poor"
- ▲ 2 "Not Good"
- ▲ 3 "OK"
- ▲ 4 "Good"
- ▲ 5 "Great"

Each azalea bush was given a rating of 1 - 5, with 1=poor and 5=great condition. Ratings were influenced by the following factors: size and shape of the plant, amount of foliage vs. dead branches, presence of weeds around base of plant. See photo examples.

Factors that may affect azalea condition: age, shade/sun, water, invasive weeds, pruning, groundhogs, and/or moss & lichens.



1 - Poor



2 - Not Good



3 - OK



4 - Good



5 - Great



# Contrary to popular belief, azaleas should be pruned

First of all I want to deal with a problem that has troubled me.

We've lived in this house for 47 years and many times traveled for months at a time. Never have we had a problem with anything missing. But I was gone for two weeks recently and came home to find my favorite walking stick missing from beside my door. It's just a stick to whoever took it. But, to me a has a special connection to my deceased husband. If anyone has any information about what happened to my walking stick, I would greatly appreciate your call at 541-469-3850.

I would really be happy if it showed up at my door again.

So, now let's get gardening.



GROWING  
YOUR GARDEN  
Jerry Holcomb

Every year when the azaleas in Azalea Park are pruned, observers become concerned, maybe believing they should never be pruned.

Actually, they do require pruning. Otherwise, they grow tall and spindly, and their blooms will be sparse after a few years. But, proper pruning is important.

This year an azalea specialist from Portland has been invited

to come and advise the best pruning methods. He will be at the park on Monday and Tuesday, March 16 and 17, supervising the local pruning for the most productive effects.

On March 17 he will be speaking at the Chenco Community Public Library at 6 p.m. The public is invited to this very informative presentation.

This is a great chance to learn more about azaleas and their care and proper pruning.

You may ask, "Why prune?" You just got that bush looking fabulous, it blooms its head off — you ask again, "Why mess with success?"

The real question is, What are our reasons for pruning? And there

are several. 1. To remove dead or diseased wood; 2. To keep the size of the plant within the space allotted in your garden; 3. To shape young shrubs so their growth will be uniform; 4. Pruning

certain shrubs improves flowering and fruiting; 5. To renew the vigor of older shrubs; 6. To make the plant look better and branch symmetrically.

Obviously all these points do not apply to every bush. The type of pruning you do will depend on the type of plant. How to prune is probably the most puzzling question of all.

"Thinning" cuts open up the plant, allowing more light into the center. To assess where to cut, study the shrub's lines and determine which main branches

lend form. You can often take out some of the older branches to the ground. You may also want to thin out some shoots to open the plant more. Weak, twiggy, or dead limbs should also be removed.

"Heading" cuts are made at the tips of main branches to encourage clusters of smaller shoots, thus making the shrub more bushy. Heading cuts are usually made to make or keep a plant smaller, bushier, and more compact.

"Shearing" is similar to heading, except it is done to shape the plant to make it produce dense twiggy growth.

"Pinching" is usually done only at the tip of a plant (the terminal bud) to force it to branch. We pinch fuchsias for this

reason, but there are other plants where this applies.

When pruning, always cut back to a part that will continue to grow. To the trunk, to a bud, or to another branch. Clean cuts callus faster than ragged cuts. Removing that extra growth will give the plant more vigor for blooming.

Now, tool out and get started as soon as weather permits.

~~~~~  
Jerry Holcomb is author of "Pacific Coastal Gardening." Its mission is to offer practical information to those who garden in coastal climates. It's loaded with color photos. Holcomb is happy to answer gardening questions. Call evenings, 541-469-3850, or send email to [jholcomb27@gmail.com](mailto:jholcomb27@gmail.com).

## **AZALEA REJUVENATION WORK DATES**

**Wed, Sept 18 from 9 AM until 1 PM**

**Tues, Sept 22 from noon until 4 PM**

**Mon, Sept 28 from 9 AM until 1 PM**

**Volunteers: meet in the lower parking lot off Old County Road at 9 AM (16 & 28th) or noon on Sep 22.**

**Questions: Curry County Master Gardeners (OSU Extension Office) contact number: (541) 247-6672**





Fig. 25. Azalea State Park, Brookings, Oregon. The view is from the shelter on the knoll toward the Chetco River. A shower of rain is passing. May 30, 1954. *Breakey photo*

Reprinted from **NOTES ON OUR WESTERN AZALEA RHODODENDRON OCCIDENTALE** By E. P. Breakey  
Illustrated Lecture Delivered at the 16th Annual Meeting of the American Rhododendron Society (May 7, 1960 in Portland, OR)  
Subsequently published in the *Journal of the American Rhododendron Society*, Vol. 14, No. 3, July, 1960



# THE COMPASSIONATE FRIENDS

Assisting families after the death of a child

Northwest Coast Chapter

P.O. Box 1595, Brookings, OR 97415, (541) 469-5814

[www.tcfnorthwestcoast.org](http://www.tcfnorthwestcoast.org)

September 15, 2015

Parks and Recreation Commission  
City of Brookings  
898 Elk Drive  
Brookings, OR 97415

RE: THE COMPASSIONATE FRIENDS MEMORIAL MONUMENT

Dear Commissioners:

The Northwest Coast Chapter of The Compassionate Friends kindly thanks you all for your June 23 approval of a memorial bench to be placed in Azalea Park at a location designated by Parks/Technical Services Supervisor Anthony Baron.

Attached for your information is a picture of how the bench backrest will appear. I am working with Mr. Baron on coordinating placement of the bench, when completed.

Thank you all, again. Your support is very much appreciated.

Sincerely,

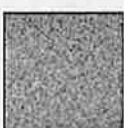
Georgia Cockerham  
Chapter Leader  
TCF, Northwest Coast

# The Compassionate Friends

REDWOOD MEMORIAL  
CHAPEL  
TCF  
NORTHWEST  
COAST  
CHAPTER  
BRATTAIN FAMILY  
TRUST

Redwood  
Chapel

Memorial Design Style:



Polish



Black

Cut in Polish

Our print will not  
guarantee a 100%  
color match.  
Granite is a natural product.

ORDER: #15-2261

DATE: 8.18.2015

ARTIST: TOM ALBERS

SIZE: 48" BENCH

COLOR: PREMIER WHT.

|                                                   |                                                |                                                                                                                                                                                                  |                                                   |
|---------------------------------------------------|------------------------------------------------|--------------------------------------------------------------------------------------------------------------------------------------------------------------------------------------------------|---------------------------------------------------|
| McCaleb Mac DeCausmaker<br>10/26/1980 - 6/30/2010 | Leonidas Grant Lee Katanopoulos<br>7/10/2010   |                                                                                                                                                                                                  |                                                   |
| Jessie Rose Lee Fisher<br>5/5/1989 - 7/17/2012    | Jamie Elizabeth Hoy<br>9/22/1989 - 5/18/2008   |                                                                                                                                                                                                  |                                                   |
| Lee G. MacDonald<br>7/14/1956 - 10/17/2012        | Scott O. Neal<br>7/9/1959 - 1/7/1960           | They shall grow not old,<br>as we that are left grow old:<br>Age shall not weary them,<br>nor the years condemn.<br>At the going down of the sun<br>and in the morning<br>we will remember them. | Ryan Michael Olds<br>8/4/1995 - 9/7/2013          |
| Zachary Owen Ward<br>4/21/1976 - 5/25/2003        | Jamber Lee Neal<br>7/3/1961 - 5/14/2002        |                                                                                                                                                                                                  | Billy Jay Ward<br>6/11/1980 - 10/11/2004          |
| Sean Michael Smith<br>4/18/1967 - 11/23/2012      | Michael A. Gomez<br>7/3/1985 - 8/27/2004       |                                                                                                                                                                                                  | Elizabeth Kollman<br>12/5/1975 - 4/11/2013        |
| Kyle Taylor Smith<br>5/17/1991 - 1/22/2012        | Jerrl Widmer Smith<br>3/14/1961 - 1/20/2009    |                                                                                                                                                                                                  | Michael Thomas Klonowski<br>4/21/1969 - 5/22/2015 |
| Steve Harvey Morris<br>12/18/1985 - 6/30/2002     | Michael John McKinney<br>3/6/1989 - 11/21/2013 | By Laurence Binyon<br>from For the Fallen.                                                                                                                                                       | Jennifer Lee Dinan<br>9/23/1978 - 5/20/2013       |
|                                                   |                                                |                                                                                                                                                                                                  | Natalie Rene Cunningham<br>9/27/1976 - 4/16/2013  |
|                                                   |                                                |                                                                                                                                                                                                  | Kevin Davison<br>11/19/1961 - 12/22/1994          |

\*PLEASE CHECK, SIGN, DATE AND RETURN.

\*Please do not make notes in shaded area.

☐ APPROVED

Signature

Date

☐ REQUESTED WITH MODIFICATIONS

Please check the proof carefully for names, dates, spelling, punctuation, layout and design. Your signature above constitutes acceptance of full responsibility for all before we can proceed with your order.

