

AGENDA
CITY OF BROOKINGS
PARKS AND RECREATION COMMISSION MEETING
Council Chamber - 898 Elk Drive
November 29th, 2007 - 7:00 p.m.

- I. CALL TO ORDER**
- II. PLEDGE OF ALLEGIANCE**
- III. ROLL CALL**
- IV. APPROVAL OF MINUTES**
 - A. Minutes of October 25, 2007
- V. PUBLIC APPEARANCES**
- VI. REGULAR AGENDA**
 - A. Flagpole at Azalea Park Bandshell Area (Commission Chair Parrish)
 - B. Review proposal to remove trees by Coos Curry Electric Co-op and make recommendation for City Council consideration.
- VII. INFORMATION UPDATES/DISCUSSION ITEMS**
 - A. Easy Manor Park Update (Commissioner Brown)
- VIII. COMMISSIONER REPORTS/COMMENTS**
- IX. ADJOURNMENT** (Next meeting December 20th, 7 pm)

MINUTES
BROOKINGS PARKS AND RECREATION COMMISSION
October 25, 2007

CALL TO ORDER

Chair Tony Parrish called the meeting to order at 7:00 pm followed by the Pledge of Allegiance.

ROLL CALL

Commissioners present: Michelle Benoit, Patricia Brown, Frances Hartmann & Chair Tony Parrish

Commissioners absent: Don Vilelle, excused absence

Others present: City Councilor Jan Willms, City Manager Gary Milliman, Public Works Director John Cowan

APPROVAL OF MINUTES

- A. **Motion was made by Commissioner Hartmann to approve the minutes of September 27, 2007 as written; the motion was seconded and the Commission voted, the motion carried unanimously.**

PUBLIC APPEARANCES

None

REGULAR AGENDA

- A. Review of City Parks Reservation Fee Schedule – City Manager Gary Milliman presented a recommendation to: 1) remove park use fees from the Administrative Fee ordinance and add language allowing park use fees to be set by resolution; and to 2) adopt by resolution a revised fee schedule for City park use. Discussion of park use fees ensued including clarification of increased fees for events with more than 200 participants and 50% fee reduction for non-profit organizations. **A motion was made by Commissioner Benoit to approve the proposed City Park Reservation Fee Schedule as presented; the motion was seconded and the Commission voted, the motion carried unanimously.**
- B. Grant Application Planning – City Manager Gary Milliman presented information on the Local Government and Recreation Trails Grant Programs and possible projects to begin planning to apply for grants. Discussed prioritization of grant projects currently in the process of pursuing. **A motion was made by Commissioner Brown to make replacement of existing Easy Manor Park playground equipment the number one priority for the Local Government Grant Program; motion was seconded and the Commission voted, the motion carried unanimously. A motion was made by Commissioner Hartmann to recommend that the City Council look at the Chetco Point Park grant and it be resubmitted with modifications as necessary under the Recreation Trails Head grant; the motion was seconded and the Commission voted, the motion carried unanimously.**
- C. Flagpole at Azalea Park Bandshell Area – Commissioner Parrish advised that an anonymous donor would like to install a flagpole at the bandshell to be used at public functions requiring a flag. Discussion ensued, it was suggested to bring the matter up at the Azalea Park Master Plan meeting October 30th; matter tabled at this time.

- D. 4-H Use of Bankus Park for Holiday Candy Sale Fundraiser -- **A motion was made by Commissioner Hartmann to approve the use of Bankus Park by the 4-H as presented; the motion was seconded and the Commission voted, the motion carried unanimously.**

INFORMATION UPDATES/DISCUSSION ITEMS

- A. Easy Manor Park Update – Commissioner Brown presented a review of the Easy Manor Subcommittee meeting on October 5th where they received Local Government Program Grant Manuals to review and reviewed park comment forms received at the Ice Cream Social. Scheduling of another subcommittee meeting to go over grant requirements and to get neighborhood members involved is planned.

COMMISSIONER REPORTS/COMMENTS

Commissioner Hartmann questioned if the Peace Gathering scheduled for October 27th at Bankus Park needed permission of the Park & Recreation Commission. City Manager Milliman advised that it was a public gathering permitted under the law and were not required to get permission to gather in a public place.

Chair Parrish provided information on the progress of the Stout Mountain Railroad. Would like to know what can be done with the cistern and if it could eventually be made into a water feature for the park. The March of the Santas is scheduled for November 23rd.

Public Works Director John Cowan advised that the Department of Forestry is in the final stage of removal of the SOD trees and that the quarantine will continue to be in effect indefinitely. PW will be posting "Keep Out" signs with the quarantine signs to persuade people not to walk on trails and the spreading of SOD. Commissioner Parrish advised there is a tree on the corner of the cul-de-sac at Stout Park that may possibly need to be taken down.

ADJOURNMENT

With no further business before the Commission, the meeting adjourned at 7:57 p.m.

Respectfully submitted,

Tony Parrish, Chair

(approved at November 29, 2007 meeting)

PARKS & RECREATION AGENDA REPORT



To: Parks & Recreation Commission

From: John Cowan, Public Works Director

Date: November 14, 2007

Subject: Request by Coos-Curry Electric Coop (CCEC) to remove, at their expense, four hazardous trees on Lundeen Lane near Azalea Park and four hazardous trees at Stout Park adjacent to Oak Street due to their close proximity to major power lines.

Recommendation: Authorize CCEC to remove the eight trees at their cost.

Background /Discussion: Staff was contacted by CCEC's tree removal contractor regarding hazardous trees, four at Stout Park and four on Lundeen Lane in Azalea Park, which either overhang or lean toward power main feed lines in those two areas. Fallen limbs from trees at Stout Park caused the downtown power outage approximately two weeks ago. Staff has received an email from Randy McDonald, CCEC representative, which is included with this agenda item. The removal of these trees would reduce the probability of power outages due to falling or wind blown tree limbs from city property.

CCEC has agreed to cut the trees down in log form so that the City can sell them to South Coast Lumber under our current permit.

Financial Impact(s): None. If trees are removed in log form approximately two truck loads of logs could be sold to South Coast Lumber, generating approximately \$3,000 from the sale of logs and those monies could be put toward planting new trees in the parks away from power lines.

Parks & Recreation Commission Review and Approval for Placement on Council Agenda:

Tony Parrish, Chair – Parks & Recreation Commission

John Cowan

From: Randy McDonald [randym@cooscurryelectric.com]
Sent: Tuesday, November 06, 2007 11:17 AM
To: John Cowan
Cc: Lauren Porsch
Subject: danger tree

John, we have identified several danger trees in the city of Brookings, four of them are on Lundeen Lane and are a danger to our Transmission line feeding Harbor and our line #5 feeding the North Bank Chetco. These trees have multiple tops and are leaning heavy toward our lines. Stout Park is the other location; these old growth trees have created several outages over the years. Most recent was last week causing a major outage to the City of Brookings. These trees are a hazard to our lines, our workers and the general public and would like you to consider working with CCEC in the removal of these trees.

Thank you,

Randy McDonald

11/6/2007

CCEC Azalea Park Hazard Trees

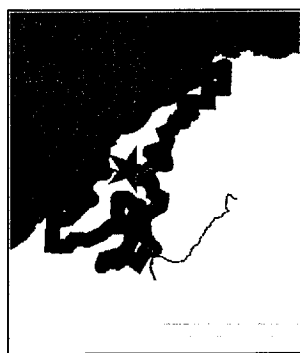


0 190 380 570 ft.

This map is a public resource of general information. Use this information at your own risk. Curry County makes no warranty of any kind, expressed or implied, including any warranty of merchantability, fitness for any particular purpose or any other matter.

Notes: There are 4 trees in this area which are referenced in the CCEC Danger Tree Correspondance.

Map center: 42° 3' 35.6" N, 124° 16' 18.1" W



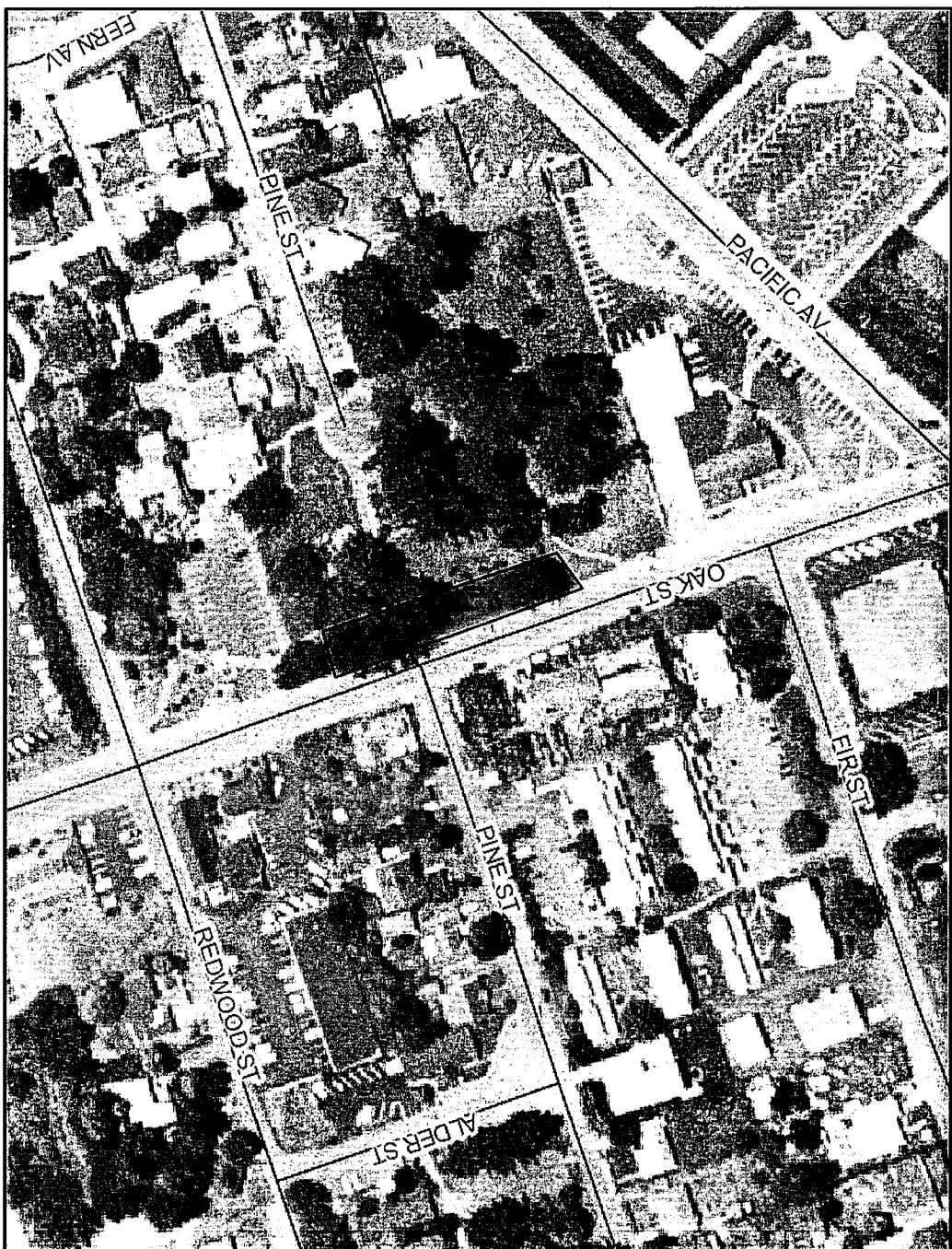
Legend

- RIVERS
- ~ ROADS
- URBAN GROWTH BOUNDARY
- SPECIAL PROVISIONS
- OCEAN
- ORTHOIMAGE



Scale: 1:1,961

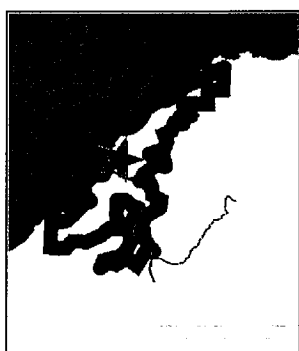
2007 Stout Park CCEC danger tree removal



This map is a public resource of general information. Use this information at your own risk. Curry County makes no warranty of any kind, expressed or implied, including any warranty of merchantability, fitness for any particular purpose or any other matter.

Notes: In this area there are 4 trees total. Three firs and one Redwood. CCEC would like to remove these trees.

Map center: 42° 3' 18.5" N, 124° 16' 45.1" W



Legend

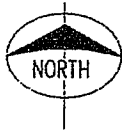
- RIVERS
- ~ ROADS
- URBAN GROWTH BOUNDARY
- SPECIAL PROVISIONS
- OCEAN
- ORTHOIMAGE



Scale: 1:1,961

STOUT PARK

MISC. FRUIT TREES



**FIR STREET
TREES**

Knob Cone
Pine Variety

SYCAMORE

Weeping
Birch

PINE STREET

**TREE
FRIENDS
BROOKINGS
HARBOR**

A=ALDER

T=TANOAK

W=WILLOW

M=WAX MYRTLE

J=JAPANESE MAPLE

D=EVERGREEN DOGWOOD

H=HONEY LOCUST

----- SIDEWALKS

☼ LARGE DOUGLAS FIR

F=SMALL DOUGLAS FIR

▬ =PARK BENCH

TURN AROUND

NATIVE
DOGWOOD

MANLEY
ARTS
CENTER
BLDG.

FLOWERING
CHERRIES

W
CRAB APPLES

PARKING

SWEET GUM

PLUMS

ALDERS

ELDERBERRY

M ALDERS

REDWOOD STREET

OAK STREET

REDWOOD

Map designed by
al Colinet - 2005