

### Metro Update



**Troutdale City Council**  
March 9, 2010  
Metro Councilor Rod Park

### What defines a successful region



- People live and work in vibrant communities where they can choose to walk for pleasure and to meet their everyday needs.
- Current and future residents benefit from the region's sustained economic competitiveness and prosperity.
- People have safe and reliable transportation choices that enhance their quality of life.
- The region is a leader in minimizing contributions to global warming.
- Current and future generations enjoy clean air, clean water and healthy ecosystems.
- The benefits and burdens of growth and change are distributed equitably.

### Making the Greatest Place accomplishments 2007-2009

- Concept planning for new urban areas
- Funding approved for 19 new TOD projects
- Federal stimulus funds allocation for transportation projects
- Active Transportation Demonstration projects
- High Capacity Transit System Plan
- Regional Freight Plan
- Supported dozens of local park and trail projects and protected natural areas with "local share" funding
- Launched The Intertwine

### Regional Transportation Plan update



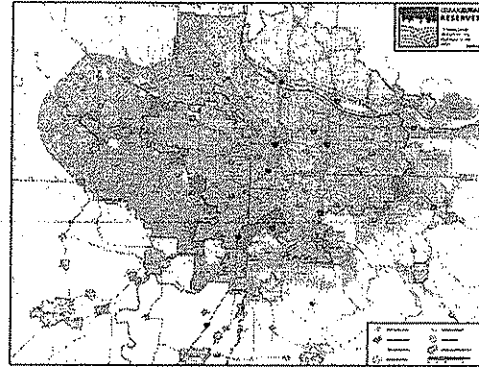
- JPACT, Metro Council accepted RTP in December to analyze air quality conformity
  - Final adoption in June
- Invests in existing network to support jobs and economic growth, enhance communities
- Climate Change Action Plan

### Urban and Rural Reserves



- In December Metro Council and three counties released draft agreements and a map
- Final agreements were adopted in February
- Formal land use actions in Spring 2010
  - Metro to designate urban reserves
  - Counties to designate rural reserves
- More information:  
[www.oregonmetro.gov/reserves](http://www.oregonmetro.gov/reserves)

### Final Urban/Rural Reserve Map

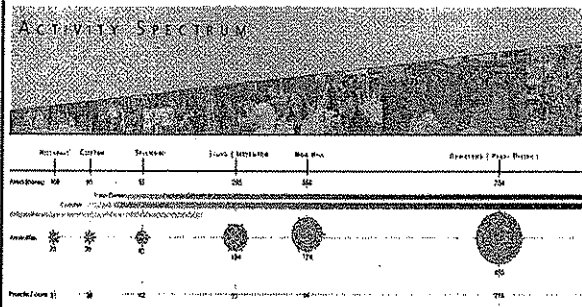


### Building healthy, vibrant communities



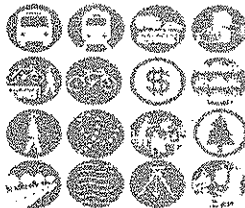
- Urban Growth Report adopted in December
  - Need to accommodate 44,100 to 62,100 new households by 2030
  - Need to find additional land for industrial, large-lot employment
- Metro working with cities, counties to support more growth within current UGB
- Metro Council decision on UGB in 2010

### LINKING ASPIRATIONS TO PRIORITIES Activity Spectrum

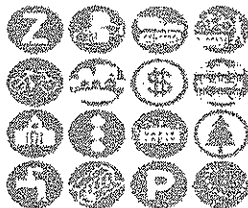


### A mix of regional and local actions are needed to support aspirations

#### Regional actions



#### Local actions



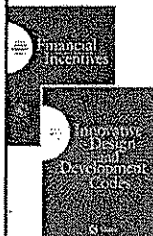
Another tool - [www.Walkscore.com](http://www.Walkscore.com), calculates the walkability of any address

### Metro's Community Investment Toolkit

Tools and best practices for creating and enhancing vibrant urban communities.

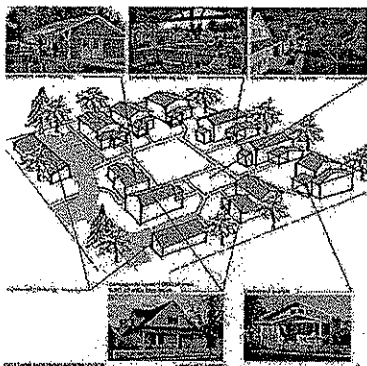
#### Two Volumes:

- Financial Incentives
- Innovative Design and Development Codes



Cottage Housing in Volume 2 as a tool for creative infill development in transition areas

### Cottage housing



### Chehalem Ridge

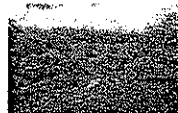


### Local share program: Troutdale



- \$591,096 in local share bond funds
- Funding will go towards:
  - Improvements to the Mt Hood Community College Natural Area.
  - Improvements to the Beaver Creek Greenway Trail.
  - Construction of the Sandy River Trail at the former sewage treatment plant.

### 2009 Restoration and Enhancement Grant program



- SOLV was awarded \$12,930
- Grant award will:
  - restore native vegetation
  - improve water quality
  - stabilize eroding banks along Beaver Creek Canyon in Troutdale

### Highlights

- 2002 Urban Growth Boundary decision
- Nature in Neighborhoods restoration grants
- Stabilizing Metro funding
- Charter campaign, anti-density
- Regional Transportation Plan with Councilor Rex Burkholder
- Disposal Service Planning
- Outdoor School Funding
- MERC, increasing accountability and transparency

### Your questions...

Rod Park  
Metro Councilor, District 1  
600 NE Grand Avenue  
Portland, OR 97232

503-797-1547  
[rod.park@oregonmetro.gov](mailto:rod.park@oregonmetro.gov)  
[www.oregonmetro.gov/park](http://www.oregonmetro.gov/park)