

RESOLUTION NO.2025

A RESOLUTION RECOGNIZING THE COMPLETION OF WELL #5 AND ASSOCIATED PUBLIC IMPROVEMENTS, AND ACCEPTING THEM INTO THE CITY'S FIXED ASSET SYSTEM

THE TROUTDALE CITY COUNCIL FINDS AS FOLLOWS:

1. The construction of Well #5 and associated public improvements was necessary to meet the demands of public health, safety, and welfare.
2. The construction of Well #5 and associated public improvements has now been completed.
3. Well #5 and associated public improvements have been inspected and found to be in compliance with the City of Troutdale *Construction Standards for Public Works Facilities* and the construction plans and specifications.

NOW, THEREFORE, BE IT RESOLVED BY THE COUNCIL OF THE CITY OF TROUTDALE


Section 1. The following public improvements are accepted into the City's fixed asset system, valued as follows:

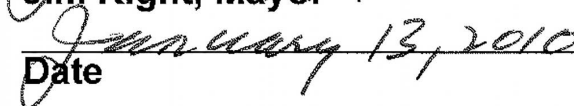
<u>Improvement</u>	<u>Estimated Value</u>
Domestic groundwater well, drilled to 697' below ground surface, includes 521' of 16" blank steel casing, 83' of 12" blank steel casing, and 89' of 12" steel wire-wrap screen	\$343,000
Well house, structure and appurtenances	\$185,000
Pump and motor assembly, 350 HP vertical line shaft turbine type	\$176,000
Electrical improvements, includes 400 HP variable frequency drive	\$217,000
Well house piping and chlorination system	\$89,000

Water mains to existing system, includes approx. 208 LF of 12" ductile iron pipe, one 8" gate valve, one 12" gate valve, and appurtenances	\$69,000
Storm sewer for pump-to-waste, includes approx. 390 LF of 12" ADS pipe and one 48" manhole	\$44,000
Domestic water and 4" sanitary sewer services for well house	\$15,000
Pervious asphalt driveway and parking lot, includes gate	\$46,000
Site landscaping	\$23,000
Total Estimated Value:	\$1,207,000

Section 2. This resolution is effective upon adoption.

YEAS: 7
NAYS: 0
ABSTAINED: 0



Jim Kight, Mayor


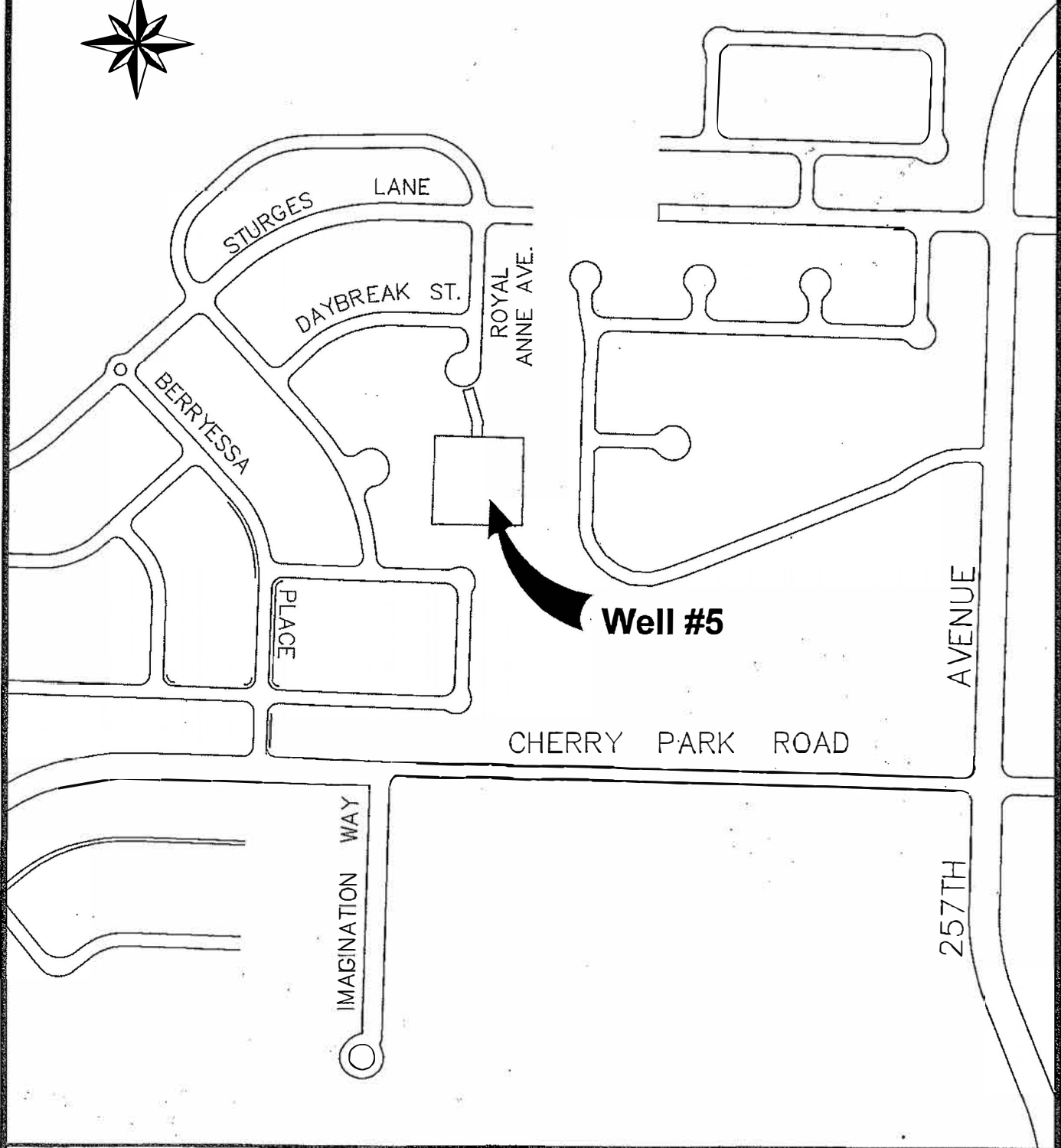
Date



Debbie Stickney, City Recorder

Adopted: January 12, 2010

Exhibit A



FILE NAME: *Exhibit A - Vicinity Map*
TITLE BLOCK: *TB8X11*
EXTERNAL REFERENCES: *NONE*
PLOT DATE: *1-4-2010*
BY: *O.S.*
PREVIOUS REVISION DATE: *NONE*



DEPARTMENT OF PUBLIC WORKS
CITY OF TROUTDALE

Vicinity Map

MULTNOMAH COUNTY, OREGON
January 2010