

RESOLUTION NO. 2313

A RESOLUTION EXPRESSING SUPPORT FOR THE GORGE HUB PROJECT AT DEPOT PARK

THE TROUTDALE CITY COUNCIL FINDS AS FOLLOWS:

1. Gorge Hubs are a series of park facilities which, when completed, will comprise a network of bicycle support structures for recreational and commuter bicyclists.
2. Troutdale staff and the West Columbia Gorge Chamber of Commerce are aggressively pursuing development of the Gorge Hub Bicycle Project at Troutdale's Depot Park.
3. The Chamber and City staff are currently developing grant applications to fund implementation of the design approach in Troutdale, and afterwards will seek additional grants to fund construction of the Hub facilities.
4. The support embodied in this Resolution is directed towards establishing Troutdale's Hub, along with grant funding in support of the Hub.

NOW, THEREFORE, BE IT RESOLVED BY THE COUNCIL OF THE CITY OF TROUTDALE:


Section 1. The City Council expresses its support of the Columbia Gorge Hub Project and the Troutdale Bike Hub component of the project.

Section 2. Council directs City staff to pursue grant applications and design work to construct the project in approximately the form illustrated in Exhibits A and B to the staff report presented in connection with this Resolution.

YEAS: 7

NAYS: 0

ABSTAINED: 0



Doug Daoust, Mayor
10/15/15

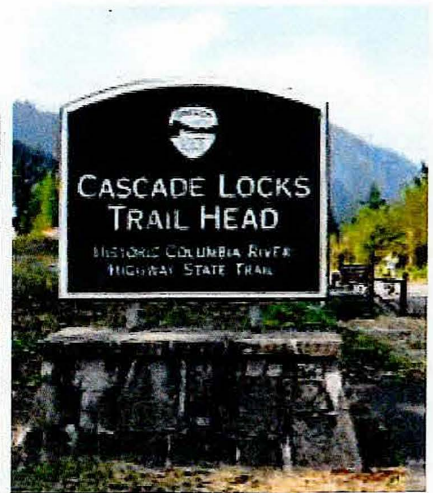
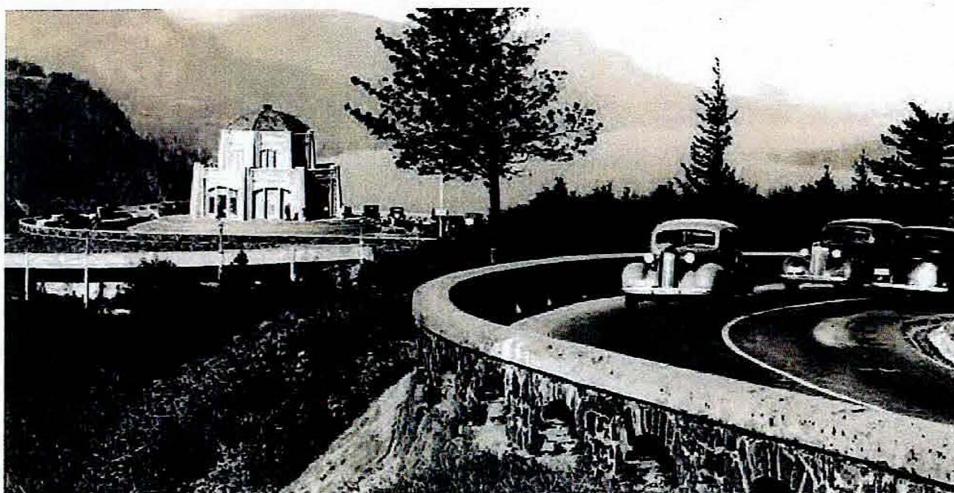
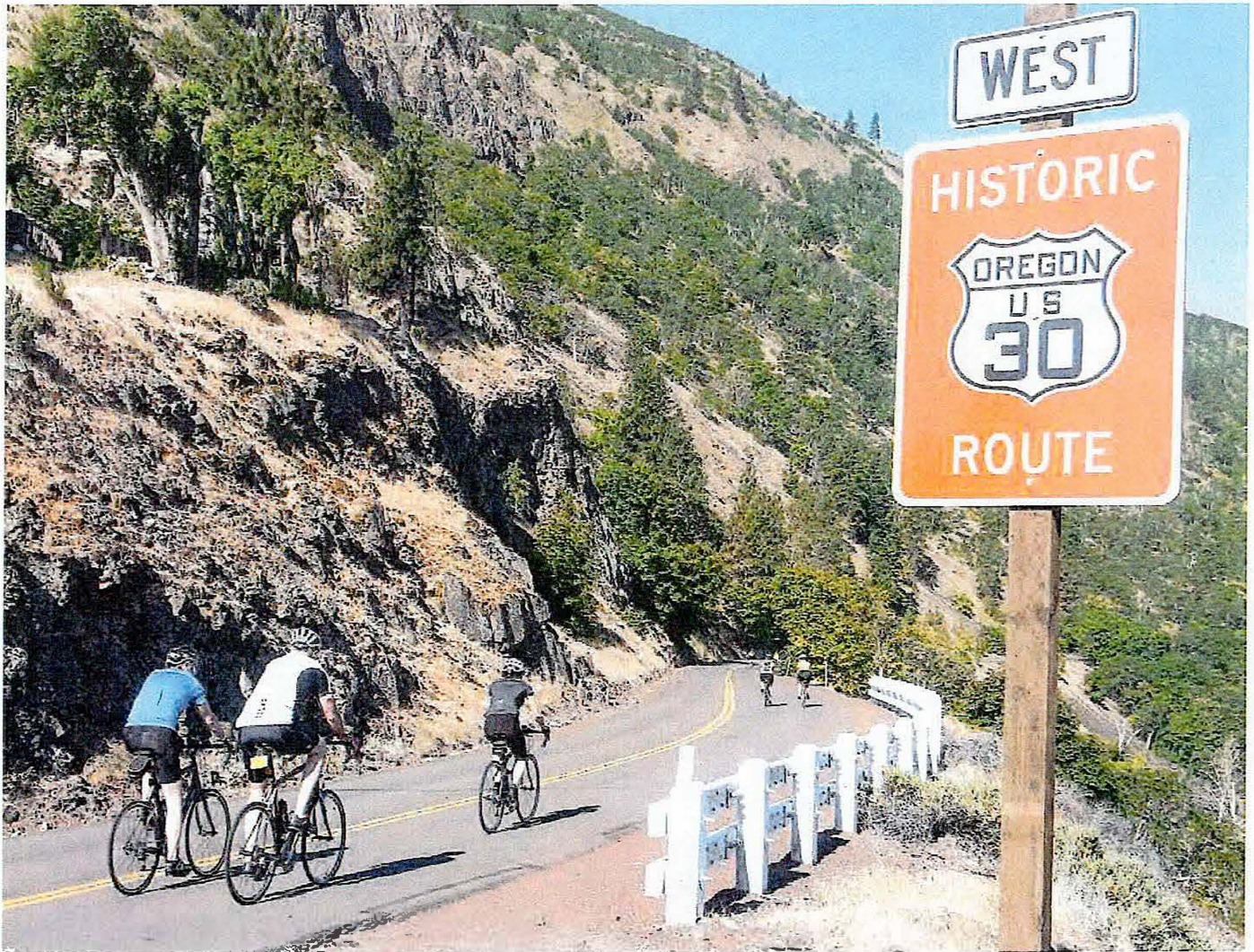
Date



Sarah Skroch, Acting City Recorder

Adopted: October 13, 2015

Troutdale



March 2015



Historic Columbia River Highway
Community Cycling Hubs

Acknowledgements

Gorge Hubs Working Group

Name	Affiliation
Arthur Babitz	Former Mayor of Hood River
Ben Hedstrom	OPRD
Claude Cruz	WCGCC
Craig Ward	City of Troutdale
Daniel Hunter	City of The Dalles
Greg Dirks	City of Wood Village
Holly Howell	Port of Cascade Locks
Karen Schaaf	WCGCC
Kate McBride	Friends of the Gorge and Hood River
Kathy Fitzpatrick	City of Mosier
Kristen Stallman	ODOT
Michele Spatz	MCEDD
Sandra Koike	ODOT
Staj Pace	Travel Oregon
Stan Hinatsu	USFS
Steve Lawrence	Mayor of the Dalles

Design Description

The Troutdale hub is located right off the Historic Highway, adjacent to Depot City Park and the local Historical Society museum, which includes a historic train caboose. Taking advantage of local history as well as the visibility from the Highway, the hub would provide a small plaza and rail station-inspired wooden shelter next to the caboose, plus bike amenities including bike racks and a fix-it station. Consistent with other hub sites, a decorative stone-faced low wall, similar to ones found along the HCRH, is used around the perimeter and functions as an informal seat wall. A large stone drinking fountain, like those once found at HCRH waysides, would be placed under the shelter. Locally-produced art could also be displayed in the plaza. A standard hub sign would be placed off of the Historic Highway, to be seen by east- and west-bound travelers. Deeper into the site, off of an existing trail, portable restrooms and wood picnic tables could be provided on new concrete pads. Also, trail connections to the north and south of the new hub will provide a future link between the hub site and the 40-Mile Loop Trail system.

Amenities include--

Core amenities (common to all hubs):

- Drinking fountain (new)
- Signage, including informational/wayfinding and hub identifier (new)
- Shelter (new)
- Restrooms (new portables)
- Seating (new)
- Paving (new)
- Wayfinding maps (new)
- Bike Racks (new)
- Bike Fix Station (new)

Additional amenities:

- Picnic tables (existing)
- Art (new)

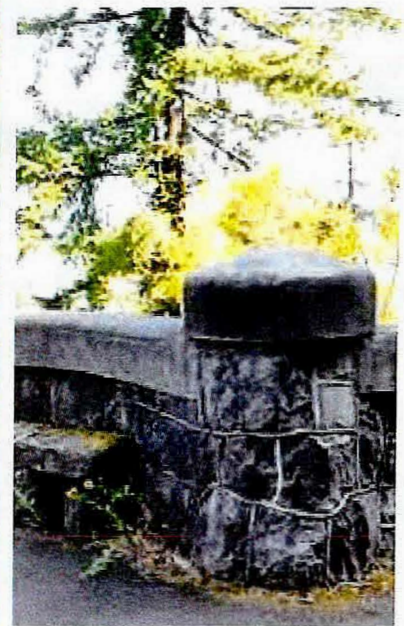
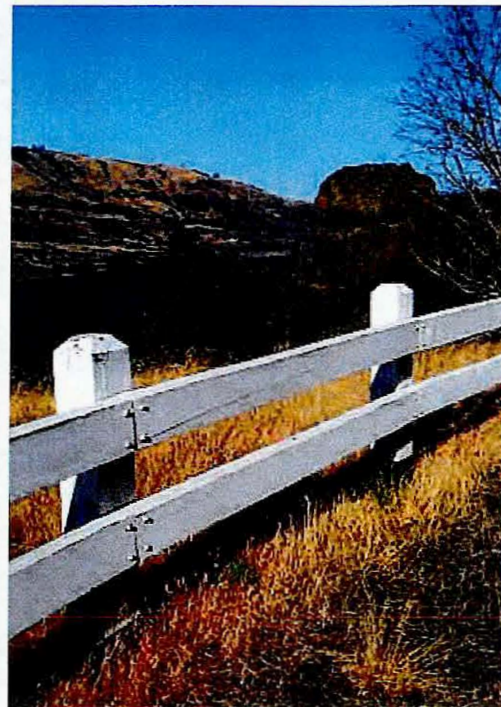
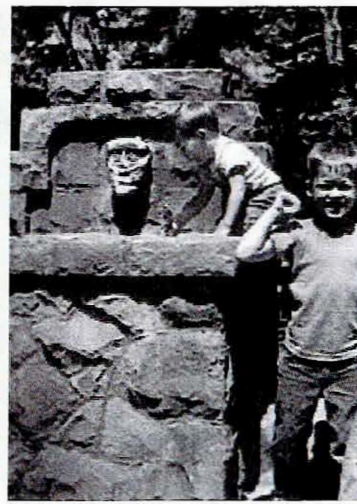
Historic Columbia River Highway

Precedent Imagery



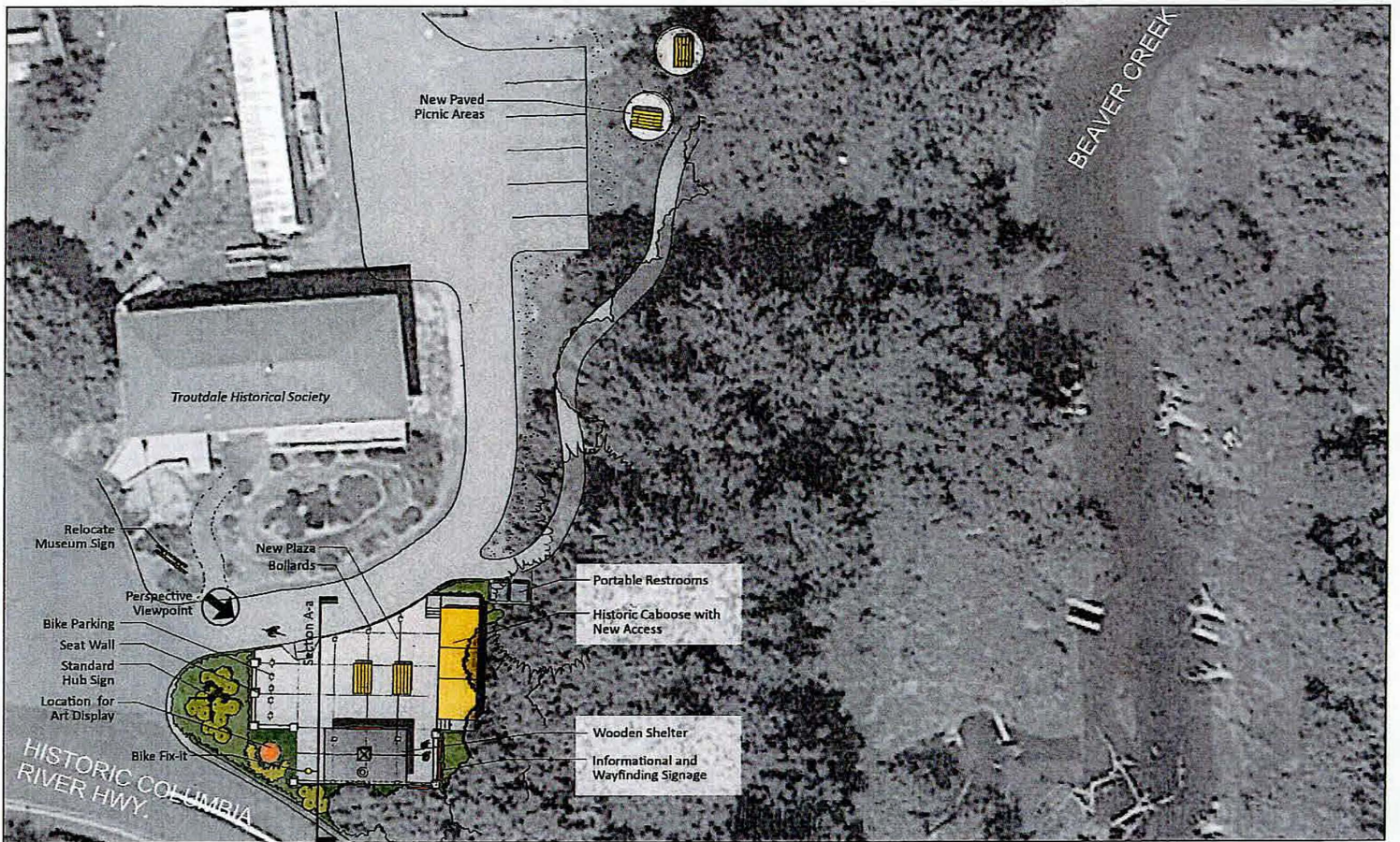
Along the Historic Columbia River Highway (HCRH), a palette of materials and details displays the timeless craftsmanship first established with the highway's construction. This has since become an iconic element of traveling through the gorge. Some of these details, including stone-faced walls, drinking fountains, concrete benches, and white guardrail posts have been

incorporated into the hub design concepts, to provide a sense of connection to the HCRH and continuity along the state trail. In doing so, the user's experience will remain connected to the HCRH and the gorge whether they visit a bike hub in Troutdale, Wood Village, Cascade Locks, Hood River, The Dalles or Mosier.



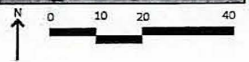
Hub Site Photos



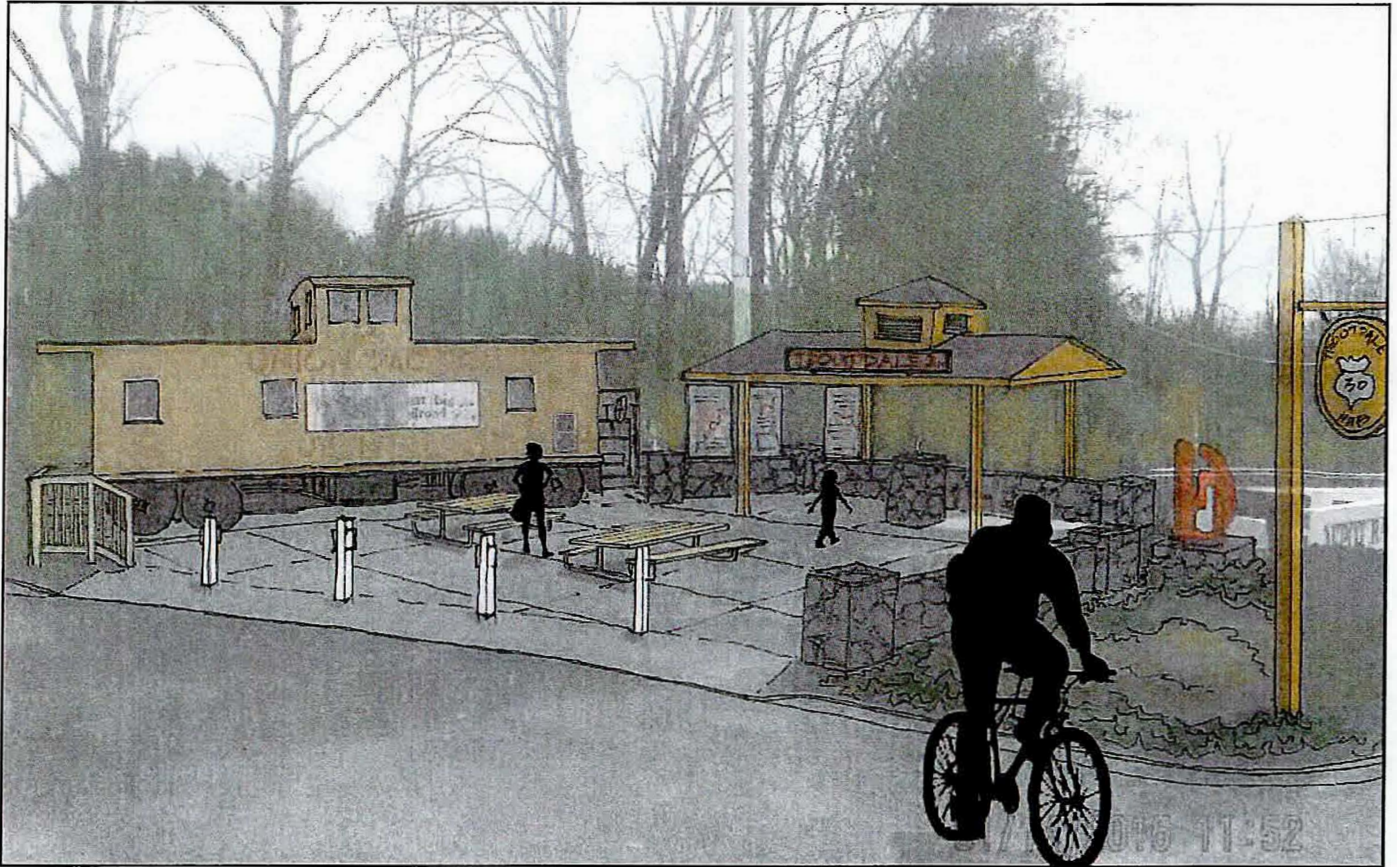


Troutdale Hub

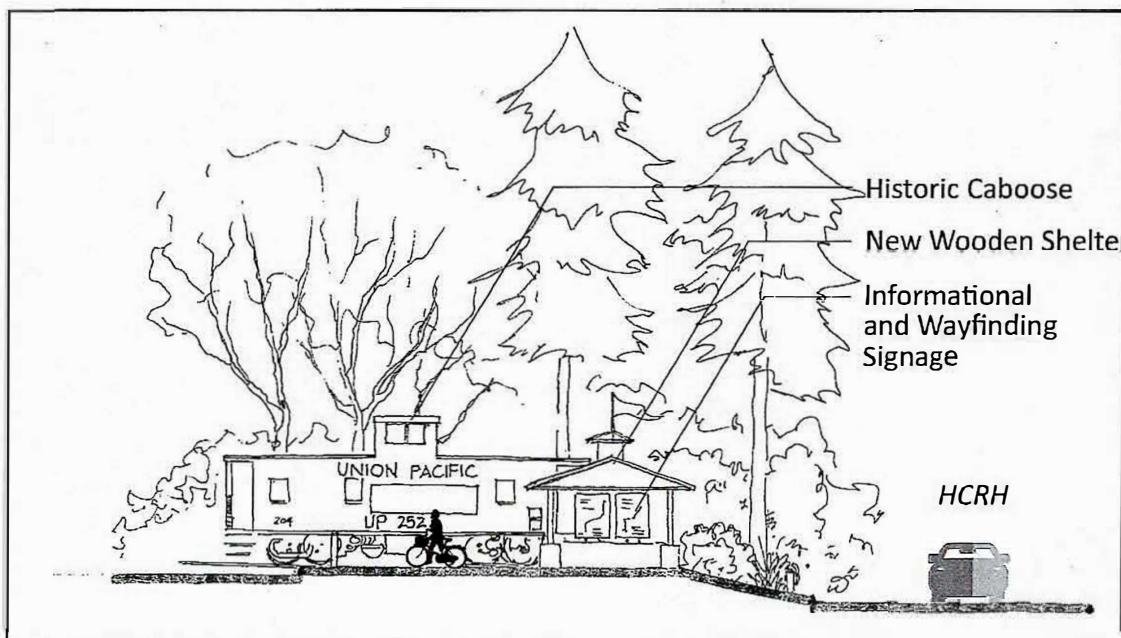
Conceptual Plan



Site Sketches



The proposed Troutdale hub creates a plaza space next to the historic rail caboose belonging to the Troutdale Historical Society. A wooden shelter would anchor the new plaza, and informational and wayfinding signage would be placed on one side. Stone-faced low walls provide seating, and bike services like parking and a fix-it station would complete the space. Signage and locally-provided art would attract cyclists and drivers traveling along the Historic Highway.



Section A-a

Preliminary Opinion of Cost

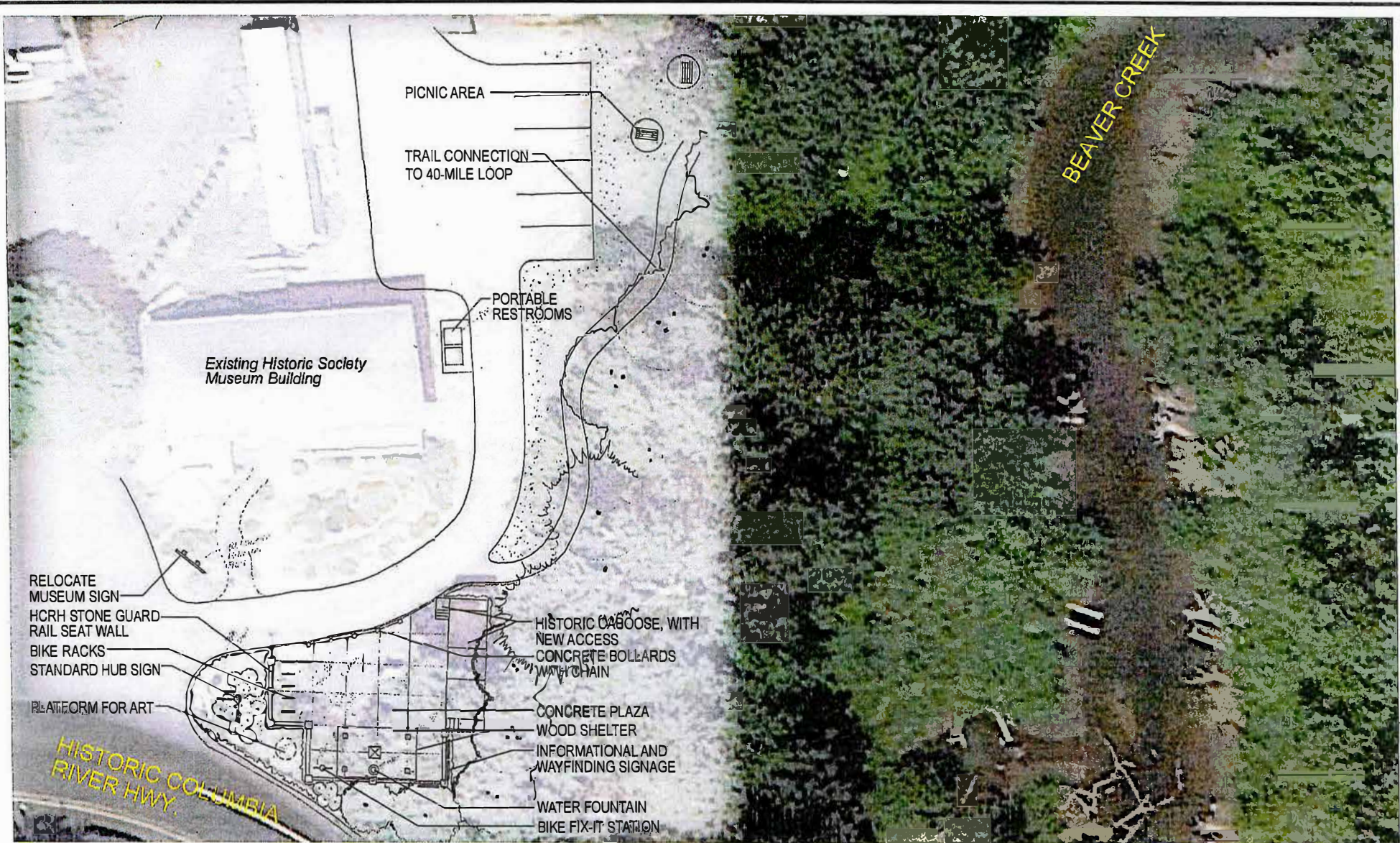
TROUTDALE HUB

Item	Units	Quantity	Cost Per Unit	Item Total	Notes
Wooden Shelter	SF	300	30 \$	9,000.00	Cost will vary by future design
Paving	SF	1472	\$ 8.00	\$ 11,776.00	
Planting Areas	SF	750	\$ 5.00	\$ 3,750.00	
Decorative Seat Wall	SF	360	\$ 40.00	\$ 14,400.00	Assumes double-sided
Bike Racks	EA	5	\$ 300.00	\$ 1,500.00	
Bike Fix-It Station	EA	1	\$ 500.00	\$ 500.00	
Wayfinding Panel Signs	EA	3	\$ 250.00	\$ 750.00	
Hub Sign	EA	1	\$ 500.00	\$ 500.00	
Sub-Total				\$ 42,176.00	
Concept-level Contingency				\$ 21,088.00	50% assumed
Total				\$ 63,264.00	

*Unit prices reflect 2015 costs

This page intentionally left blank.

Historic Columbia River Highway
Community Cycling Hubs



SCALE 1"=10'

0 10 20

JANUARY 2015

SITE ANALYSIS DIAGRAM
DEPOT PARK
 TROUTDALE, OREGON

DAVID EVANS AND ASSOCIATES INC.
 3100 Southwest Elwell Parkway
 Portland Oregon 97201
 Phone 503.223.6903