

RESOLUTION NO. 1969

A RESOLUTION RECOGNIZING THE COMPLETION OF THE PUBLIC IMPROVEMENTS ASSOCIATED WITH THE ESTATES AT RIVERBEND WEST RESIDENTIAL SUBDIVISION AND ACCEPTING THEM INTO THE CITY'S FIXED ASSET SYSTEM.

THE TROUTDALE CITY COUNCIL FINDS AS FOLLOWS:

1. The construction of the public improvements associated with the Estates at Riverbend West subdivision was necessary to meet the demands of public health, safety, and welfare.
2. The construction of these public improvements has now been completed.
3. The public improvements have been inspected and found to be in compliance with the City of Troutdale *Construction Standards for Public Works Facilities* and the construction plans and specifications.

NOW, THEREFORE, BE IT RESOLVED BY THE COUNCIL OF THE CITY OF TROUTDALE


Section 1. The following public improvements associated with the Estates at Riverbend West subdivision are accepted into the City's fixed asset system, valued as follows:

<u>Improvement</u>	<u>Estimated Value</u>
Sanitary sewer system, consisting of 2,034 linear feet of 8" PVC sewer main and 14 manholes as shown on Sheets C5.0-C5.3 of the project as-builts.	\$101,390
Stormwater collection and conveyance system, consisting of 1,215 linear feet of 12" ADS-N12 storm main, 314 linear feet of 15" ADS-N12 storm main, 208 linear feet of 18" ADS-N12 storm main, 13 linear feet of 24" ADS-N12 storm, 277 linear feet of 96" CMP detention pipe, 12 48" manholes, two 72" flow-control manholes, two 36" access risers, 15 catch basins, one ditch inlet, two detention ponds, and one water quality swale, as shown on Sheets C4.0-C4.5 of the project as-builts.	\$372,563

Water system, consisting of 1,663 linear feet of 8" ductile iron water main, 159 linear feet of 12" ductile iron water main, six 8" gate valves, two 12" butterfly valves, three fire hydrant assemblies, three air release valve assemblies, and four 8" blow-off assemblies, as shown on Sheets C5.0-C5.3 of the project as-built.	\$82,104
On-site 32' wide paved streets (SE Jones Lane, 321 linear feet; SE 48 th Street, 565 linear feet; SE Sweetbriar Lane, 404 linear feet; SE Pioneer Lane, 275 linear feet), consisting of base rock and asphalt surfacing as shown on Sheets C4.0-C4.2 of the project as-built.	\$102,774
On-site pedestrian facilities, consisting of 209 linear feet of 5-foot-wide sidewalk and 12 ADA ramps as shown on Sheet C4.0 of the project as-built.	\$21,371
On-site curb and gutter, consisting of 2,929 linear feet of curb and gutter as shown on Sheets C4.0-C4.2 of the project as-built.	\$27,913
Total Estimated Value:	\$708,115

Section 2. This resolution is effective upon adoption.

YEAS: 7
NAYS: 0
ABSTAINED: 0


 Paul Thalhoffer, Mayor
 November 26, 2008

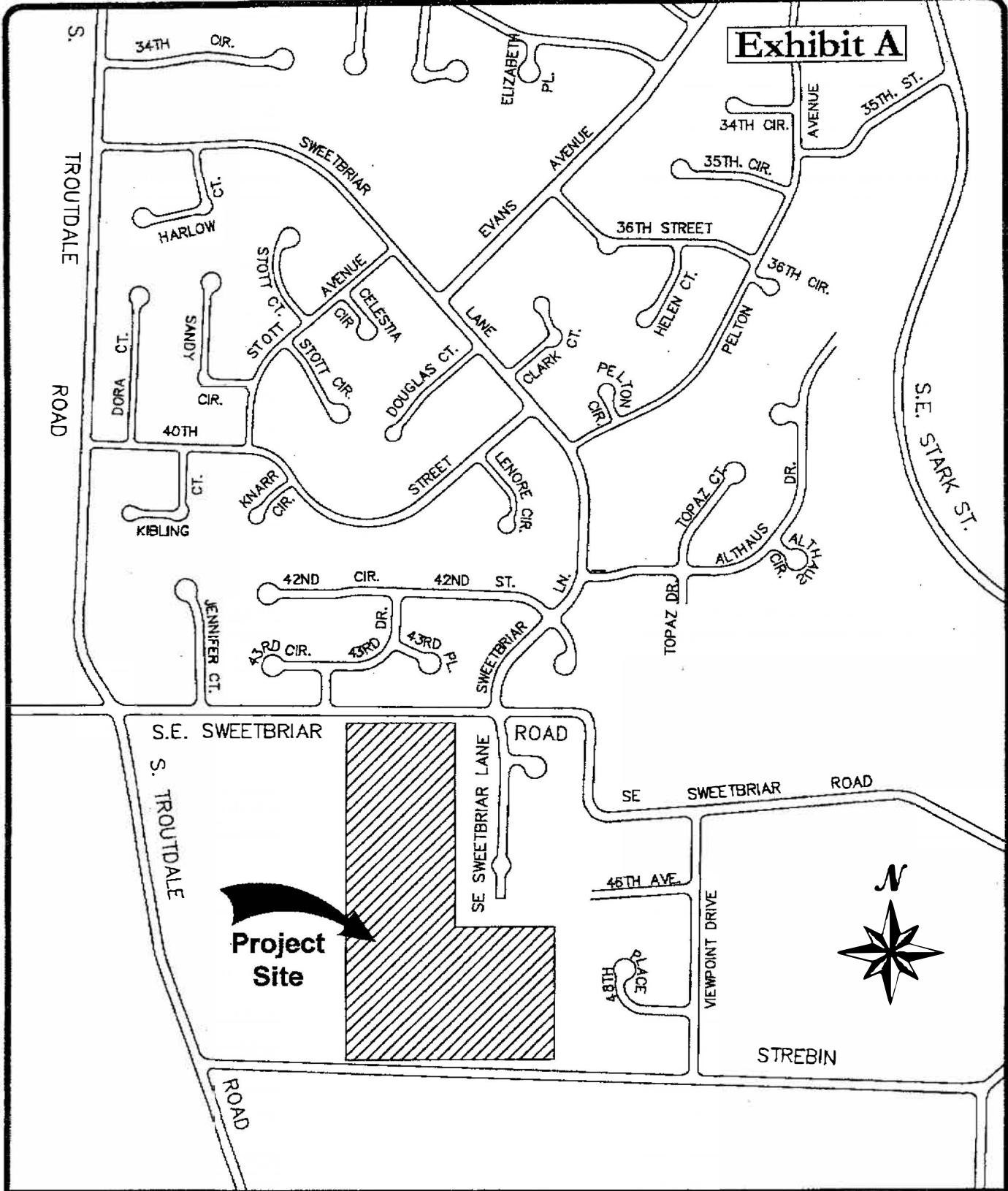
 Date



 Sarah Skroch, Deputy City Recorder

Adopted: November 25, 2008

Exhibit A



FILE NAME: *Exhibit A - Vicinity Map*
TITLE BLOCK: *TBBX11*
EXTERNAL REFERENCES: *NONE*
PLOT DATE: *10-28-2008*
BY: *D.S.*
PREVIOUS REVISION DATE: *NONE*



DEPARTMENT OF PUBLIC WORKS
CITY OF TROUTDALE
Estates at Riverbend West
MULTNOMAH COUNTY, OREGON
November 2008