

RESOLUTION NO. 1861

A RESOLUTION RECOGNIZING THE COMPLETION OF THE PUBLIC IMPROVEMENTS ASSOCIATED WITH THE ESTATES AT RIVERBEND RESIDENTIAL SUBDIVISION AND ACCEPTING THEM INTO THE CITY'S FIXED ASSET SYSTEM

THE TROUTDALE CITY COUNCIL FINDS AS FOLLOWS:

1. The construction of the public improvements associated with the Estates at Riverbend subdivision was necessary to meet the demands of public health, safety and welfare.
2. The construction of these public improvements has now been completed.
3. The public improvements have been inspected and found to be in compliance with the City of Troutdale *Construction Standards for Public Works Facilities* and the construction plans and specifications.
4. As-built drawings have been received and found to be acceptable.

NOW, THEREFORE, BE IT RESOLVED BY THE COUNCIL OF THE CITY OF TROUTDALE

Section 1. The following public improvements associated with the Estates at Riverbend subdivision are accepted into the City's fixed asset system, valued as follows:

Improvement	Estimated Value
Sanitary Sewer System, consisting of approximately 1546 linear feet of 8" PVC sewer main (SE Viewpoint Drive, SE Topaz Drive and SE Walter Circle) and 14 manholes, as shown on sheets C5.0-C5.4 of the project as-builts.	\$101,686
Stormwater collection system, consisting of 181 linear feet of 24" ADS-N-12 storm main, 566 linear feet of 18" ADS-N12 storm main, 1200 linear feet of 12" ADS-N12 storm main, 400 linear feet of 66" CMP detention pipe, 15 48" standard manholes, 6 60" manholes, 1 72" flow-control manhole, 2 water quality swales w/ sedimentation manholes and fencing (Tracts A and C) and 20 catch basins (Viewpoint, Topaz, Walter and Offsite) as shown on sheets C4.0-C4.6 of the project as-builts.	\$276,169

Water System, consisting of 2088 linear feet of 8" ductile iron water main, 12 gate valves, 1 blow off assembly, 1 air release, 14 1" double water services, 12 ¾" single water services and 4 fire hydrant assemblies as shown on sheets C5.0-C5.4 of the project as-builts. **\$124,633**

On-site 32' wide paved streets, consisting of cement-treated base, base rock and the 1st lift of asphalt-concrete surfacing as follows:

SW Viewpoint Drive – 802 linear feet (sheets C4.0-C4.1) **\$178,565**

SW Topaz Drive – 190 linear feet (sheet C4.3-C4.4)

SE Walter Circle – 138 linear ft cul-de-sac (sheet C4.2)

as shown on the indicated sheets of the project as-builts.

On-site pedestrian facilities consisting of 230 linear feet of 5' wide sidewalk, 120 linear feet of 10' wide A.C. pedestrian path with bollards and 16 ADA ramps as shown on sheets C4.0, C4.2 and C4.5 of the project as-builts. **\$29,542**

Curb and gutter consisting of 3377 linear feet of curb and gutter as shown on sheets C4.0-C4.4 of the project as-builts. **\$23,639**


TOTAL ESTIMATED VALUE \$734,234

Section 2. This resolution is effective upon adoption.

YEAS: 7

NAYS: 0

ABSTAINED: 0



Paul Thathofer, Mayor
March 14, 2007

Date



Debbie Stickney, City Recorder

Adopted: March 13, 2007

Estates at Riverbend Vicinity Map

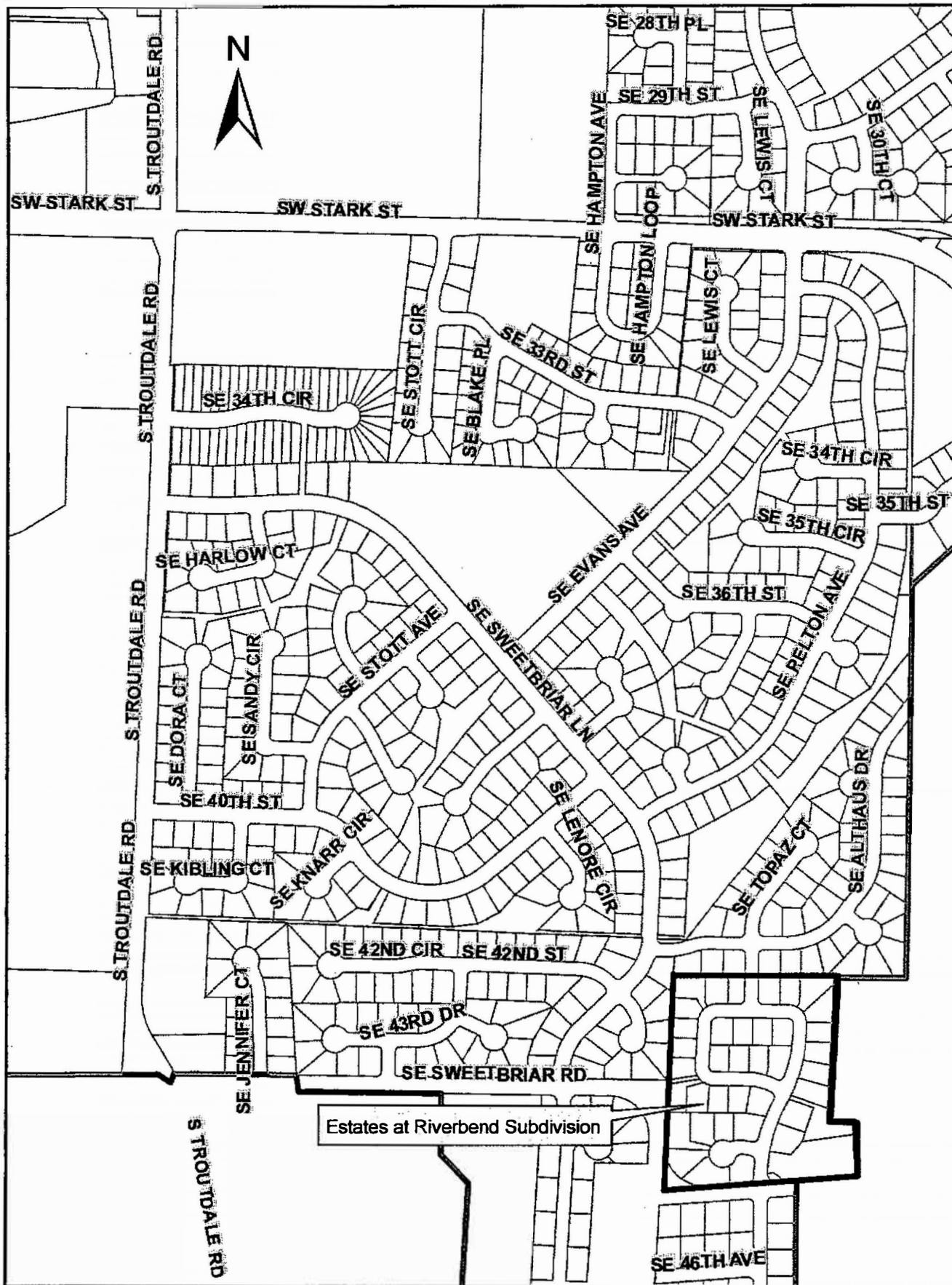


EXHIBIT A