

## RESOLUTION NO. 1709

### A RESOLUTION RECOGNIZING THE COMPLETION OF THE PUBLIC IMPROVEMENTS ASSOCIATED WITH THE WEST COLUMBIA SEWAGE PUMP STATION UPGRADE AND ACCEPTING THEM INTO THE FIXED ASSET SYSTEM

#### THE TROUTDALE CITY COUNCIL FINDS AS FOLLOWS:

1. The public improvements associated with the upgrade and rehabilitation of the West Columbia Sewer Pump Station were necessary to meet the demands of public health, safety and welfare.
2. The construction of these improvements has now been completed.
3. The public improvements have been inspected and found to be in compliance with the City of Troutdale *Construction Standards for Public Works Facilities* and the construction plans and specifications

#### NOW, THEREFORE, BE IT RESOLVED BY THE COUNCIL OF THE CITY OF TROUTDALE


Section 1. The following public improvements associated with the West Columbia Sewer Pump Station Upgrade project are accepted into the City's fixed asset system.

Improvement	Estimated Value
Force Main consisting of approximately 36 linear feet of new 6" ductile iron, approximately 25 linear feet of 4" ductile iron pipe and appurtenant fittings as shown on Attachment A	\$11,000
Water Service consisting of one 1-inch type "K" soft copper water lateral, meter and backflow prevention device as shown on Attachment A	\$1,200
Site Improvements consisting of paving, landscaping fencing and retaining wall as shown on Attachment A	\$32,300

Pump Station, consisting of 2 Flygt model NP submersible pumps, rails, and wet well cap with safety doors, as shown on Attachment B	\$55,000
Valve Vault consisting of concrete vault, 2 check valves, 2 pressure gauges, 2 plug valves and appurtenant fittings as shown on Attachment B	\$18,150
Electrical systems and Controls consisting of control panel with hard logic components, sensors, communications gear (telemetry) and appurtenant electrical components and appliances as shown on Attachment C	\$54,300
<b>TOTAL ESTIMATED VALUE</b>	
	<b>\$171,950</b>

Section 2. This resolution is effective upon adoption.

**YEAS: 7**  
**NAYS: 0**  
**ABSTAINED: 0**

  
 \_\_\_\_\_  
 Paul Thalhofer, Mayor  
 June 23, 2004  
 \_\_\_\_\_  
 Date

  
 \_\_\_\_\_  
 Debbie Stickney, City Recorder

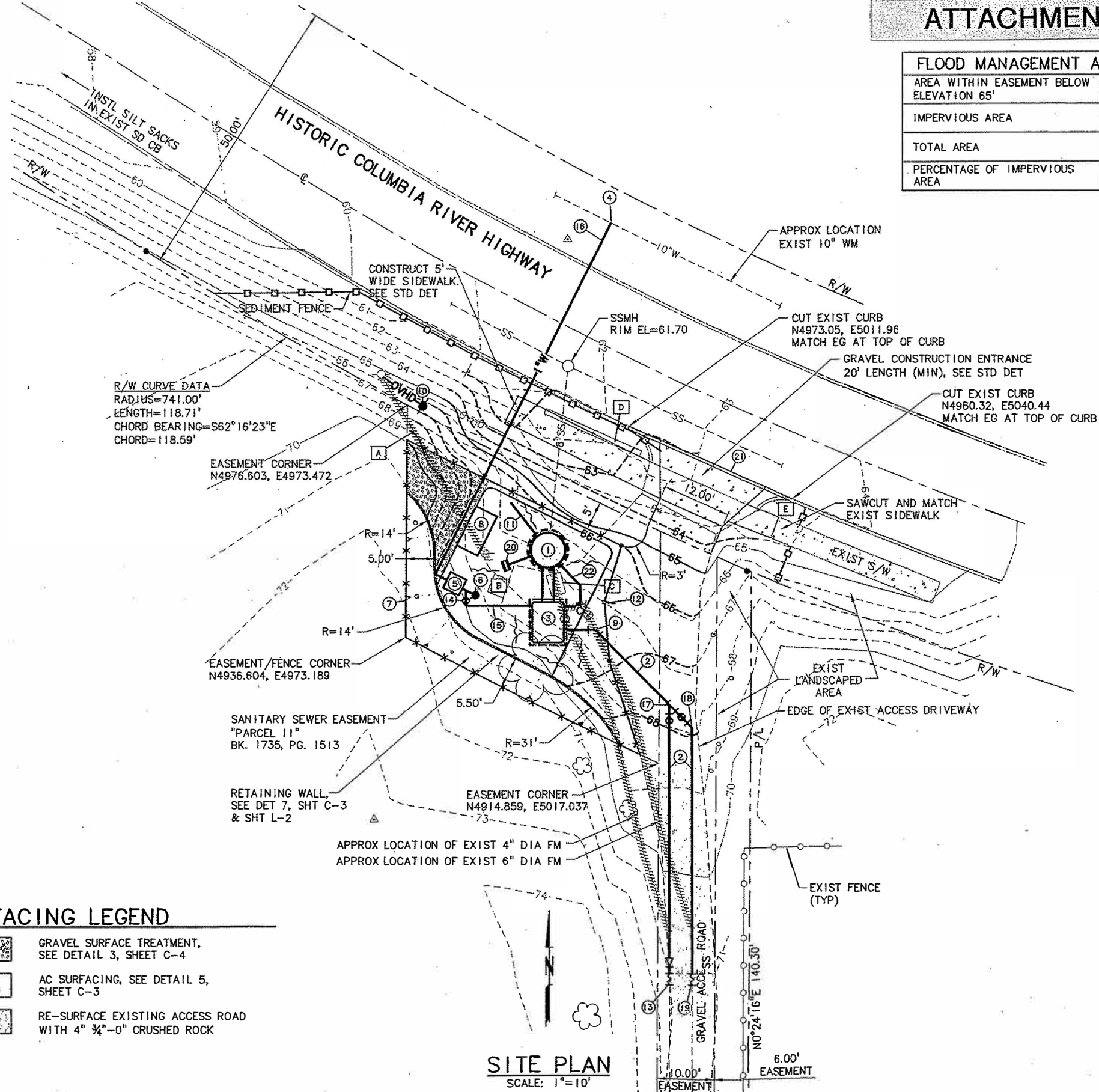
**Adopted: June 22, 2004**

FLOOD MANAGEMENT AREA	
AREA WITHIN EASEMENT BELOW ELEVATION 65'	AREA (ft <sup>2</sup> )
IMPERVIOUS AREA	40
TOTAL AREA	133
PERCENTAGE OF IMPERVIOUS AREA	30%

- KEY NOTES:**
- 1 EXIST SEWAGE PUMP STATION TO BE UPGRADED, SEE SHT C-2 N4951.60, E4997.84
  - 2 6" FM. CONSTRUCT FM AT INCREASING SLP & CONNECT TO EXIST FM. RESTR ALL JOINTS
  - 3 VALVE VAULT, SEE SHT C-2
  - 4 CONNECT TO EXIST 10" WM, SEE STD DET
  - 5 BACKFLOW PREVENTION ASSY, SEE DET 2, SHT C-3 N4945.81, E4981.80
  - 6 NON-FREEZE YARD HYDRANT, SEE DET 3, SHT C-3 N4943.82, E4985.39
  - 7 6' HIGH CHAIN LINK FENCE, SEE DET 8, SHT C-3 N4959.54, E4998.03
  - 8 ELECTRICAL & PUMP CONTROL PANEL, SEE ELECTRICAL PLANS
  - 9 6" DIA 45° BEND, MJ W/RESTR N4937.87, E5006.02
  - 10 POLE-MOUNTED TRANSFORMER & METER BASE, SEE ELECTRICAL PLANS
  - 11 4" DIA DI WETWELL VENT. SEE ALSO DET 4, SHT C-4 N4959.78, E4991.44
  - 12 6' HIGH, 20' WIDE, DOUBLE CHAIN LINK ACCESS GATE, SEE DET 9, SHT C-3. ROTATE INTO SITE. SET BOTTOM ROD TO CLEAR VAULT & WET WELL
  - 13 CONNECT TO EXIST 4" FM WITH 6"x4" MJ RDCR W/RESTR. 4" PE SPL; 4" FLEX CPLG. CONTRACTOR TO POT HOLE EXIST FM PRIOR TO CONSTRUCTION. NOTIFY ENGINEER IMMEDIATELY OF ANY CONFLICT
  - 14 1" TEE, W/1"x3/4" RDCR. 3/4" BV
  - 15 3/4" CU W INTO VAULT. TYPE I TRENCH
  - 16 1" CU WATERLINE BORE & JACK ROAD CROSSING
  - 17 6" DIA WYE, FLGxFLGxFLG, W/2-6" DIA PVs, FLGxMJ, & 1-6" DIA MxFLG ADAPTER, RESTR ALL MJs N4925.03, E5018.87 (WYE)
  - 18 6" DIA 45° BEND, MJ W/RESTR. N4921.13, E5022.87
  - 19 CONNECT TO EXIST 6" FM W/FLEX CPLG. CONTRACTOR TO POT HOLE EXIST FM PRIOR TO CONSTRUCTION. NOTIFY ENGINEER IMMEDIATELY OF ANY CONFLICT
  - 20 LYNCH STYLE CATCH BASIN. RIM=65.67' IE OUT=63.0' CONNECT TO PIPING W/FERNCO COUPLING. SEE DET 2, SHT C-4
  - 21 CONSTRUCT COMMERCIAL DRIVEWAY AND SIDEWALK, SEE STD DET
  - 22 2" DRAIN PIPE, SEE DET 1, SHT C-2

- DEMOLITION KEY NOTES:**
- A REMOVE EXIST OVHD SERVICE & SERVICE POLE
  - B REMOVE EXIST TRANSFORMER
  - C REMOVE EXIST VAULT, VALVES, REMOVE AND/OR ABAN EXIST AND FMs
  - D REMOVE EXIST RR TIES
  - E REMOVE EXIST CURB RETURNS

- NOTES:**
1. ELECTRICAL IMPROVEMENTS NOT SHOWN FOR CLARITY, SEE ELECTRICAL DRAWINGS.
  2. EXISTING UTILITY LOCATIONS ARE ONLY APPROXIMATE, THE CONTRACTOR SHALL FIELD VERIFY LOCATIONS AND DEPTHS.
  3. FILL MATERIAL UNDER STRUCTURES SHALL BE 3/4" MINUS CRUSHED ROCK COMPACTED TO 95% MAXIMUM DRY DENSITY.
  4. CLEAR AND GRUB ALL VEGETATION FROM THE PROJECT SITE.
  5. RESTORE AND HYDROSEED ALL DISTURBED AREAS NOT OTHERWISE SCHEDULED FOR SURFACE TREATMENT, PER TECHNICAL SPECIFICATIONS.
  6. ALL NORTHINGS AND EASTINGS REPRESENT CENTER OF STRUCTURE/COMPONENT.



**SURFACING LEGEND**

	GRAVEL SURFACE TREATMENT, SEE DETAIL 3, SHEET C-4
	AC SURFACING, SEE DETAIL 5, SHEET C-3
	RE-SURFACE EXISTING ACCESS ROAD WITH 4" 3/4"-0" CRUSHED ROCK

**SITE PLAN**  
SCALE: 1"=10'

G:\02\0558\201\02-0558-201-OR-C-1.dwg C-1 4/9/03 10:47 (norm)

NO.	DATE	BY	REVISION

**NOTICE**

0 1/2 1

IF THIS BAR DOES NOT MEASURE 1" THEN DRAWING IS NOT TO SCALE

DESIGNED: CES  
MBE/HCM/DKH  
DRAWN: JLH  
CHECKED: JLH



**MSA** Murray Smith & Associates, Inc.  
Engineers/Planners

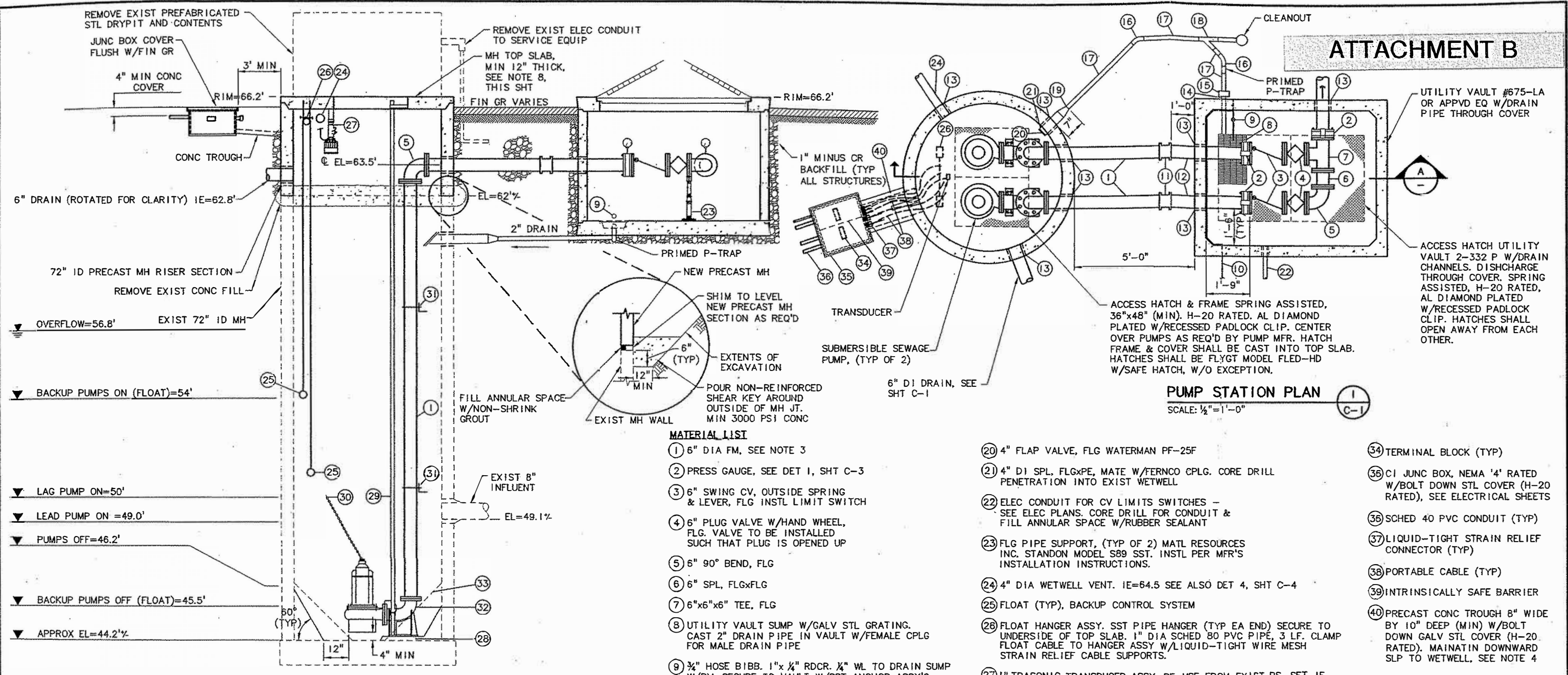
121 S.W. Salmon, Suite 900 PHONE 503-225-9010  
Portland, Oregon 97204 FAX 503-225-9022

**CITY OF TROUTDALE**  
WEST COLUMBIA SEWAGE  
PUMP STATION UPGRADE

**PUMP STATION SITE PLAN  
AND EROSION CONTROL PLAN**

PROJECT NO.: 02-0558.201 SCALE: AS SHOWN DATE: APRIL 2003

# ATTACHMENT B



**PUMP STATION PLAN**  
SCALE: 1/2" = 1'-0"

**SECTION A**  
SCALE: 1/2" = 1'-0"

**MATERIAL LIST**

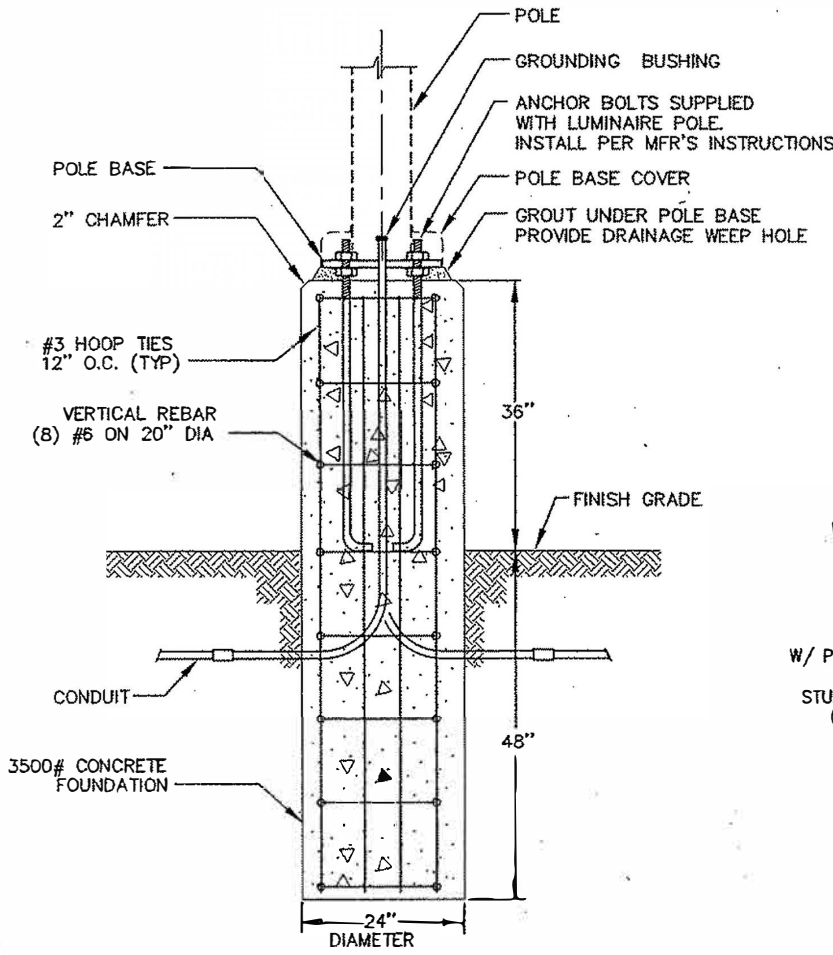
- ① 6" DIA FM, SEE NOTE 3
- ② PRESS GAUGE, SEE DET 1, SHT C-3
- ③ 6" SWING CV, OUTSIDE SPRING & LEVER, FLG INSTL LIMIT SWITCH
- ④ 6" PLUG VALVE W/HAND WHEEL, FLG. VALVE TO BE INSTALLED SUCH THAT PLUG IS OPENED UP
- ⑤ 6" 90° BEND, FLG
- ⑥ 6" SPL, FLGxFLG
- ⑦ 6"x6"x6" TEE, FLG
- ⑧ UTILITY VAULT SUMP W/GALV STL GRATING. CAST 2" DRAIN PIPE IN VAULT W/FEMALE CPLG FOR MALE DRAIN PIPE
- ⑨ 3/4" HOSE BIBB. 1"x 1/4" RDCR. 1/4" WL TO DRAIN SUMP W/BV. SECURE TO VAULT W/SST ANCHOR ASSY'S
- ⑩ VAULT DRAIN P-TRAP PRIMING LINE. CORE DRILL HOLE FOR PRIMING LINE, FILL ANULAR SPACE W/RUBBER SEALANT. EXTEND WATERLINE TO VAULT SUMP. SECURE TO VAULT W/SST ANCHORS. SEE ALSO SHT C-1
- ⑪ 6" LONG SLV, MJ W/RESTR
- ⑫ 6" SPL, PEXxFLG
- ⑬ SEAL WALL PENETRATION, SEE DET 4, SHT C-3
- ⑭ 2" DRAIN PIPE - MATE W/VAULT CPLG
- ⑮ 2" FERNCO CPLG
- ⑯ 2" 45° BEND
- ⑰ 2" DRAIN PIPE
- ⑱ 2" WYE
- ⑲ 2"x4" FERNCO RDCR CPLG
- ⑳ 4" FLAP VALVE, FLG WATERMAN PF-25F
- ㉑ 4" DI SPL, FLGxPE, MATE W/FERNCO CPLG. CORE DRILL PENETRATION INTO EXIST WETWELL
- ㉒ ELEC CONDUIT FOR CV LIMITS SWITCHES - SEE ELEC PLANS. CORE DRILL FOR CONDUIT & FILL ANULAR SPACE W/RUBBER SEALANT
- ㉓ FLG PIPE SUPPORT, (TYP OF 2) MATL RESOURCES INC. STANDON MODEL S89 SST. INSTL PER MFR'S INSTALLATION INSTRUCTIONS.
- ㉔ 4" DIA WETWELL VENT. IE=64.5 SEE ALSO DET 4, SHT C-4
- ㉕ FLOAT (TYP), BACKUP CONTROL SYSTEM
- ㉖ FLOAT HANGER ASSY. SST PIPE HANGER (TYP EA END) SECURE TO UNDERSIDE OF TOP SLAB. 1" DIA SCHED 80 PVC PIPE, 3 LF. CLAMP FLOAT CABLE TO HANGER ASSY W/LIQUID-TIGHT WIRE MESH STRAIN RELIEF CABLE SUPPORTS.
- ㉗ ULTRASONIC TRANSDUCER ASSY. RE-USE FROM EXIST PS. SET IE PER MFR'S REQMT'S TO ACCURATELY MONITOR OPERATING LEVELS SHOWN. INSTL PER MFR'S RECOMMENDATIONS.
- ㉘ HARD SHIM TO LEVEL PUMPS. FILL ANULAR SPACE W/NON-SHRINK GROUT. MIN 1" SPACE
- ㉙ 2" DIA GUIDE RAILS - PROVIDE HORIZ/VERT BRACKET SUPPORTS AS REQ'D BY PUMP MFR. SECURE TO INSIDE OF ACCESS HATCH AS REQ'D BY PUMP MFR
- ㉚ SST LIFTING CHAIN (1 PER PUMP). ANCHOR TO TOP SLAB AS REQ'D BY PUMP MFR. PROVIDE SNAP SWIVEL ON UPPER END
- ㉛ PIPE SUPPORT, SPACED EVENLY. SEE DET 1, SHT C-4
- ㉜ 4"x6" PUMP DISCHARGE REDUCING ELBOW - CONNECTION AS REQ'D BY PUMP MFR. ANCHOR TO BASE SLAB PER MFR'S RECOMMENDATIONS
- ㉝ CONTRACTOR TO REMOVE SUMP AS REQ'D TO INSTL PUMPS. RECONSTRUCT SUMP AS SHOWN. GROUT SUMP SMOOTH.
- ㉞ TERMINAL BLOCK (TYP)
- ㉟ CI JUNC BOX, NEMA '4' RATED W/BOLT DOWN STL COVER (H-20 RATED), SEE ELECTRICAL SHEETS
- ㊱ SCHED 40 PVC CONDUIT (TYP)
- ㊲ LIQUID-TIGHT STRAIN RELIEF CONNECTOR (TYP)
- ㊳ PORTABLE CABLE (TYP)
- ㊴ INTRINSICALLY SAFE BARRIER
- ㊵ PRECAST CONC TROUGH 8" WIDE BY 10" DEEP (MIN) W/BOLT DOWN GALV STL COVER (H-20 RATED). MAINATIN DOWNWARD SLP TO WETWELL, SEE NOTE 4

**NOTES:**

1. CONTRACTOR TO COORDINATE BETWEEN MANHOLE MANUFACTURER AND PUMPING EQUIPMENT SUPPLIER FOR LOCATION AND EXACT DIMENSIONS OF HATCH.
2. DRAIN PIPE SHALL BE ABS PIPE WITH PUSH-ON, SOLVENT WELDED JOINTS. SLOPE AT MINIMUM 1/4" PER FOOT TO MANHOLE.
3. CONTRACTOR TO VERIFY MINIMUM SPACING REQUIREMENTS WITH PUMP MANUFACTURER.
4. CORE DRILL MANHOLE AS REQUIRED FOR ELECTRICAL CONCRETE TROUGH AND SEAL JOINT WITH NON-SHRINK GROUT.
5. BASE MATERIAL FOR MANHOLE AND VAULT SHALL BE 18-INCHES OF 1" MINUS CRUSHED ROCK FILL COMPACTED TO 95% MAXIMUM DRY DENSITY (STANDARD PROCTOR).
6. ALL HARDWARE AND FASTENERS INSIDE WET WELL SHALL BE 316 STAINLESS STEEL UNLESS OTHERWISE NOTED.
7. GROUT JOINTS INSIDE AND OUTSIDE WITH HIGH STRENGTH GROUT AFTER MANHOLE HAS BEEN SET.
8. TOP SLAB SHALL BE DESIGNED FOR H-20 LOADING.
9. COAT PIPING AND FITTINGS IN MANHOLE AND VAULT - SEE SPECIFICATIONS.

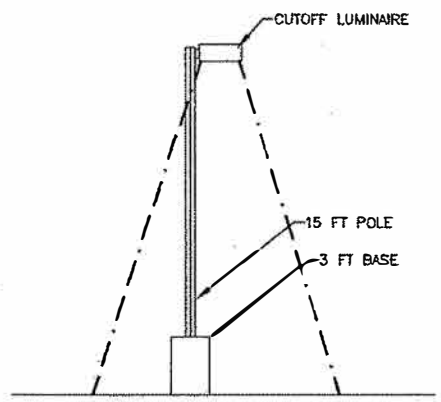
G:\02\0558\201\02-0558-201-OR-C-2.dwg, C-2 4/9/03 10:50 (hcm)

<p>NOTICE</p> <p>0 1/2 1</p> <p>IF THIS BAR DOES NOT MEASURE 1" THEN DRAWING IS NOT TO SCALE</p>	<p>BMG DESIGNED BAH/MBE DRAWN JLH CHECKED</p>		<p><b>Murray Smith &amp; Associates, Inc.</b> Engineers/Planners 121 S.W. Salmon, Suite 900 Portland, Oregon 97204 PHONE 503-225-9010 FAX 503-225-9022</p>	<p><b>CITY OF TROUTDALE</b> <b>WEST COLUMBIA SEWAGE</b> <b>PUMP STATION UPGRADE</b></p>	<p><b>PUMP STATION</b> <b>PLAN AND SECTION</b></p>	<p>SHEET</p> <p><b>C-2</b></p> <p>4 of 12</p>								
<table border="1" style="width: 100%; border-collapse: collapse;"> <tr> <th>NO.</th> <th>DATE</th> <th>BY</th> <th>REVISION</th> </tr> <tr> <td> </td> <td> </td> <td> </td> <td> </td> </tr> </table>		NO.	DATE	BY	REVISION					<p>PROJECT NO.: 02-0558.201 SCALE: AS SHOWN DATE: APRIL 2003</p>				
NO.	DATE	BY	REVISION											



POLE FOUNDATION DETAIL

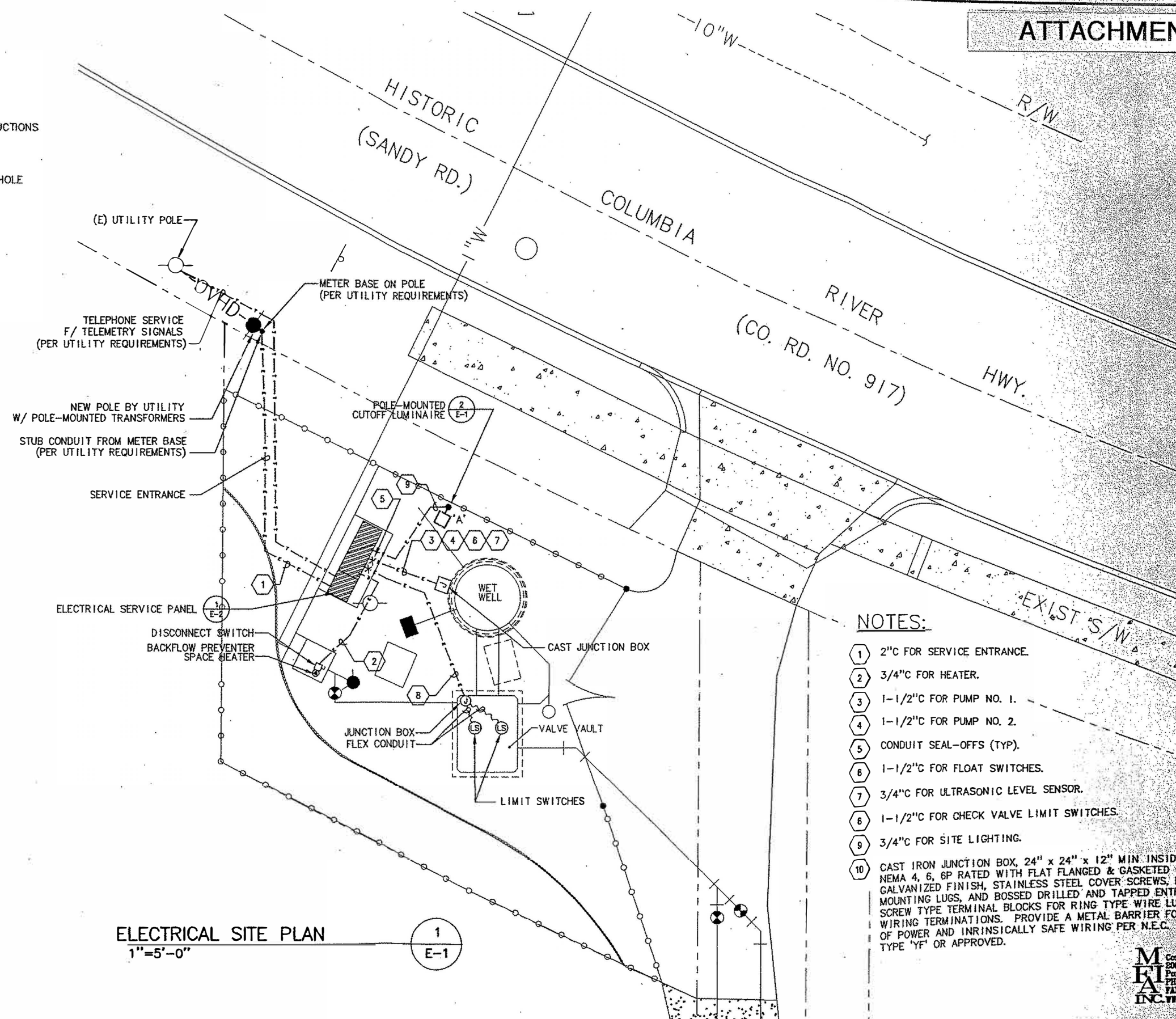
2  
E-1



ELEVATION - LIGHT

1"=5'-0"

3  
E-1



ELECTRICAL SITE PLAN

1"=5'-0"

1  
E-1

NOTES:

- 1 2" FOR SERVICE ENTRANCE.
- 2 3/4" FOR HEATER.
- 3 1-1/2" FOR PUMP NO. 1.
- 4 1-1/2" FOR PUMP NO. 2.
- 5 CONDUIT SEAL-OFFS (TYP).
- 6 1-1/2" FOR FLOAT SWITCHES.
- 7 3/4" FOR ULTRASONIC LEVEL SENSOR.
- 8 1-1/2" FOR CHECK VALVE LIMIT SWITCHES.
- 9 3/4" FOR SITE LIGHTING.
- 10 CAST IRON JUNCTION BOX, 24" x 24" x 12" MIN. INSIDE DIMENSIONS. NEMA 4, 6, 6P RATED WITH FLAT FLANGED & GASKETED COVER. HOT DIP GALVANIZED FINISH, STAINLESS STEEL COVER SCREWS, NEOPRENE GASKET, MOUNTING LUGS, AND BOSSED DRILLED AND TAPPED ENTRIES. PROVIDE SCREW TYPE TERMINAL BLOCKS FOR RING TYPE WIRE LUGS ON ALL WIRING TERMINATIONS. PROVIDE A METAL BARRIER FOR SEPARATION OF POWER AND INTRINSICALLY SAFE WIRING PER N.E.C. 0-7/GEDNEY TYPE 'YF' OR APPROVED.

**Murray Smith & Associates, Inc.**  
 Consulting Engineers  
 2007 S.E. Ash St.  
 Portland, OR 97214  
 TEL: (503) 234-6548  
 FAX: (503) 234-0677  
 WWW.MS&A-ENG.COM

G:\02\0558\201\E-1.dwg 22 x 34 4/9/03 09:45 (HCM)

NO.	DATE	BY	REVISION

NOTICE  
 0 1/2 1  
 IF THIS BAR DOES NOT MEASURE 1" THEN DRAWING IS NOT TO SCALE

MFIA  
 DESIGNED  
 MFIA  
 DRAWN  
 MFIA  
 CHECKED



**Murray Smith & Associates, Inc.**  
 Engineers/Planners  
 121 S.W. Salmon, Suite 900 PHONE 503-225-9010  
 Portland, Oregon 97204 FAX 503-225-9022

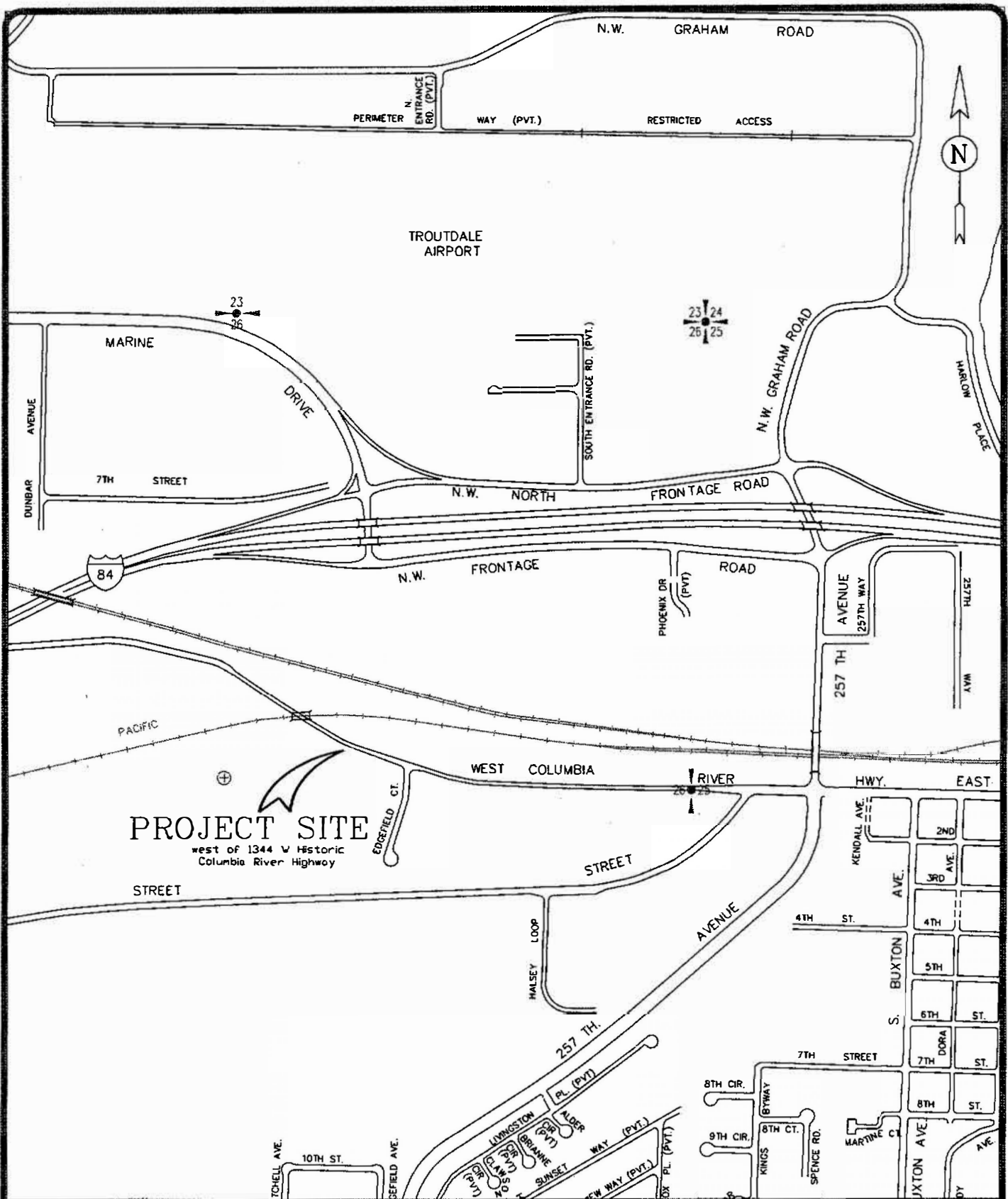


**CITY OF TROUTDALE**  
**WEST COLUMBIA SEWAGE**  
**PUMP STATION UPGRADE**

PROJECT NO.: 02-0558.201 SCALE: AS SHOWN DATE: APRIL, 2003

ELECTRICAL SITE PLAN

SHEET  
 E-1  
 7 of 12



**EXHIBIT A**

FILE NAME: Troutbos  
 TITLE BLOCK: TBBX11  
 EXTERNAL REFERENCES: NONE  
 PLOT DATE: 4/7/03  
 BY: th  
 PREVIOUS REVISION DATE: NONE



DEPARTMENT OF PUBLIC WORKS  
 West Columbia Pump Station  
 Vicinity Map  
 MULTNOMAH COUNTY, OREGON  
 4/03