

RESOLUTION NO. 1686

A RESOLUTION RECOGNIZING THE COMPLETION OF THE PUBLIC IMPROVEMENTS ASSOCIATED WITH THE GENTRY HEIGHTS SUBDIVISION AND ACCEPTING THEM INTO THE CITY'S FIXED ASSET SYSTEM.

THE TROUTDALE CITY COUNCIL FINDS AS FOLLOWS:

1. The construction of the public improvements associated with the Gentry Heights subdivision was necessary to meet the demands of public health, safety and welfare.
2. The construction of these public improvements has now been completed.
3. The public improvements have been inspected and found to be in compliance with the City of Troutdale "Construction Standards for Public Works Facilities" and the construction plans and specifications.

NOW, THEREFORE, BE IT RESOLVED BY THE COUNCIL OF THE CITY OF TROUTDALE

Section 1. The following public improvements associated with the Gentry Heights subdivision are accepted into the City's fixed asset system, valued as follows:


Improvement	Estimated Value
Sanitary Sewer System, consisting of approximately 199.65 linear feet of 8" PVC sewer main (Sanitary Line A) and 1 manhole, as shown on attachment A	\$7,850.00
Water System, consisting of 226.01 linear feet of 6" ductile iron water main, 1 blow off assembly, 1 gate valve and 1 fire hydrant as shown on attachment B	\$10,922.00
Stormwater collection system for the subdivision, consisting of 550.37 linear feet of 12" ADS-N12 storm main (Storm Line 3), 3 manholes and 2 catch basins, as shown on attachment C	\$20,797.00

Stormwater collection components for SW Hensley Road, consisting of 1 manhole and 2 catch basins, as shown on attachment C	\$5,250.00
1 Stormwater detention facility, including piping, 2 inlets structures, 1 flow-control manhole, 2 outfalls, fencing and retaining walls, as shown on attachment C	\$27,600.00
1 Stormwater Management Stormfilter™ water quality facility as shown on attachment C	\$22,300.00
New asphalt-concrete-paved street, consisting of 225.31 linear feet (to cul-de-sac center-point) of 32' wide street terminating in a 41' radius cul-de-sac as shown on attachment C	\$19,750.00
New curb and gutter consisting of 540 linear feet on SW 12 th Way and 290 linear feet on SW Hensley Road as shown on attachment C	\$6,432.00

TOTAL ESTIMATED VALUE \$120,901

Section 2. This resolution is effective upon adoption.

YEAS: 7
NAYS: 0
ABSTAINED: 0


Paul Thalhofer, Mayor
March 11, 2004
Date


Debbie Stickney, City Recorder

Adopted: March 9, 2004

1N 3E 36BB

NOTE:
THIS LOT IS NOT A PART
OF THE SUBDIVISION. DO
NOT ENCR OACH ON LOT.

**CONTRACTOR TO VERIFY LOCATION
DEPTH OF EXISTING SANITARY
HOLE PRIOR TO CONSTRUCTION.**

EX. 10" SANITARY

EX. SANITARY MH
CONNECT TO EXISTING MH
LINE A STA 0+00

4" PVC SERVICE
STA 1+43.5
L=27.0'
S=0.0200
IE 282.8

4" PVC SERVICE
STA 1+89.2
L=30.0'
S=0.0200
IE 283.2

4" PVC SERVICE
STA 1+93.2
L=71.5'
S=0.0200
IE 284.0

2TH ST

4" SW 12TH CIRCLE

CLEANOUT WITH
STEEL CAP

MH A-1
LINE A STA 1+99.65

**MANHOLE BY CORE-DRILLING
TALL APPROVED COMMERCIAL
WITH LATEX CONCRETE
AND NON-SHRINK GROUT
CHANNEL MANHOLE BASE
DRAWING.**

4" PVC SERVICE
STA 0+48.2
L=35.0'
S=0.0200
IE 282.5

4" PVC SERVICE
STA 1+03.2
L=35.0'
S=0.0200
IE 282.70

4" PVC SERVICE
STA 1+87.0
L=69.0'
S=0.0200
IE 283.9

4" PVC SERVICE
STA 1+71.2
L=82.0'
S=0.0200
IE 284.0

4" PVC SERVICE
STA 1+81.5
L=87.0'
S=0.0200
IE 284.2

NOTE:
ALL SANITARY LATERALS
ON NEW SANITARY LINE TO
BE CONNECTED WITH WYES.

4" PVC SERVICE
L=22.7'
S=0.042
IE 283.5



[1N 3E 36BB]

NOTE:
THIS LOT IS NOT A PART
OF THE SUBDIVISION. DO
NOT ENCRASH ON LOT.

15' PRIVATE
STORM DRAIN
EASEMENT

9

8

7

CL. STA 0+47.87 (12' RT)
6"x6" TEE
6" G.V. (S)
FIRE HYDRANT ASSEMBLY
W/ T.B.

DOUBLE WATER
SERVICE (TYPICAL)

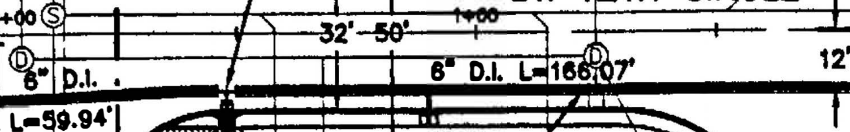
5' P.U.E.

36" MINIMUM
SEPARATION
BETWEEN TEES

W 12TH ST

SW 12TH CIRCLE

EX. WATERLINE



44+87.85 (12' LT)
VET TAP
(E)
(W)

EX 10" C.I. WATERLINE

WATERLINE TO BE
UNDER STORM
LINE

6

CL. STA 2+12.31 (13.63' LT)
BLOWOFF ASSEMBLY
W/ T.B.

2

3

15' PRIVATE
STORM DRAIN
EASEMENT

5' P.U.E.

18'

SINGLE WATER
SERVICE

50'

1

4

5



TROUTDALE FIRE STATION

NOTE:
WHEEL CHAIR RAMPS AND HATCHED
SIDEWALK TO BE INSTALLED BY
CONTRACTOR. REMAINING SIDEWALK
TO BE INSTALLED BY HOME BUILDER.

SW HENSLEY ROAD

SW 12TH ST

M-3
CL STA 48+87.03
(5.00' RT)
LINE 3 STA 0+60.23

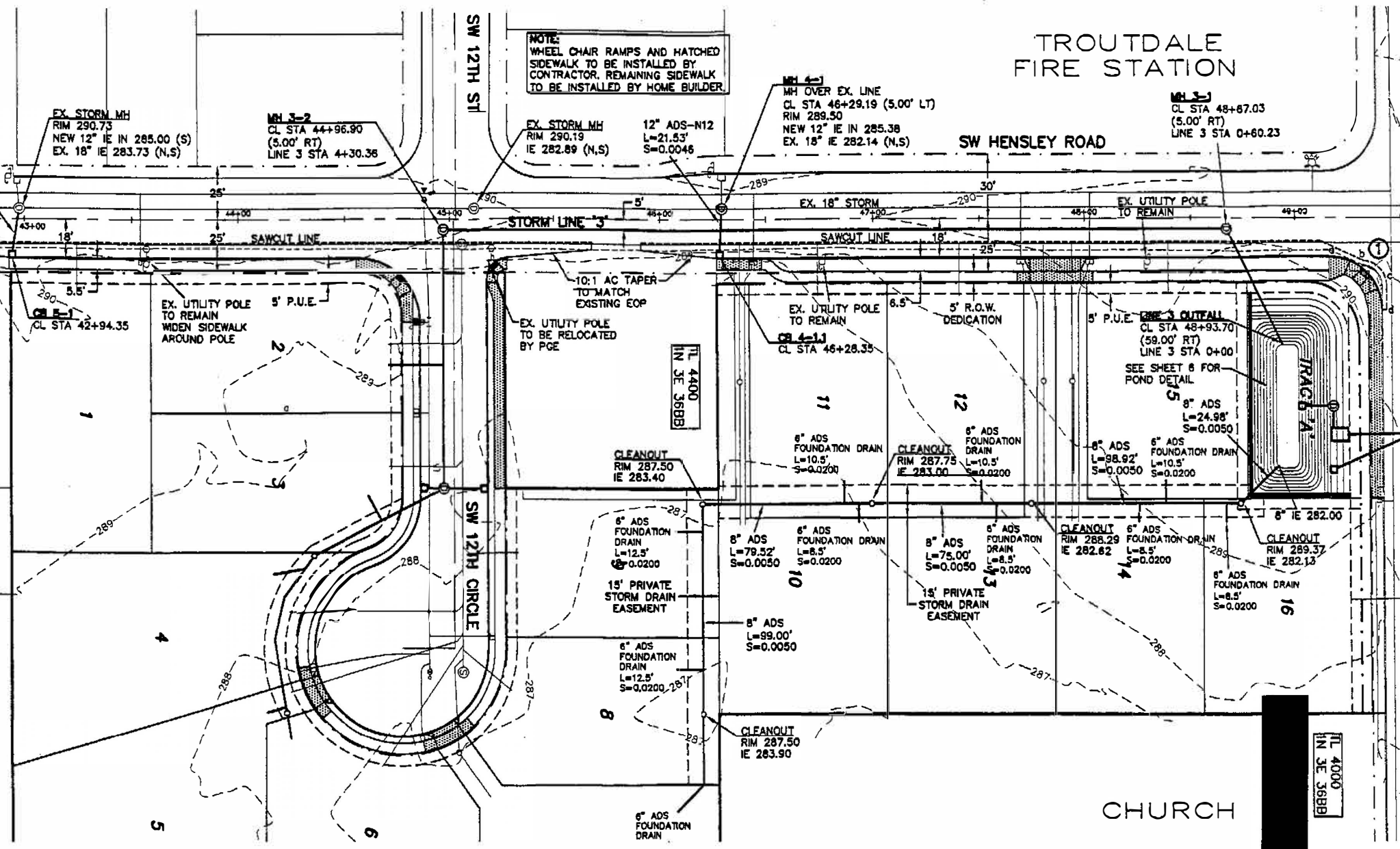
EX STORM MH
RIM 290.73
NEW 12" IE IN 285.00 (S)
EX. 18" IE 283.73 (N,S)

MH 3-2
CL STA 44+96.90
(5.00' RT)
LINE 3 STA 4+30.36

EX STORM MH
RIM 290.19
IE 282.89 (N,S)

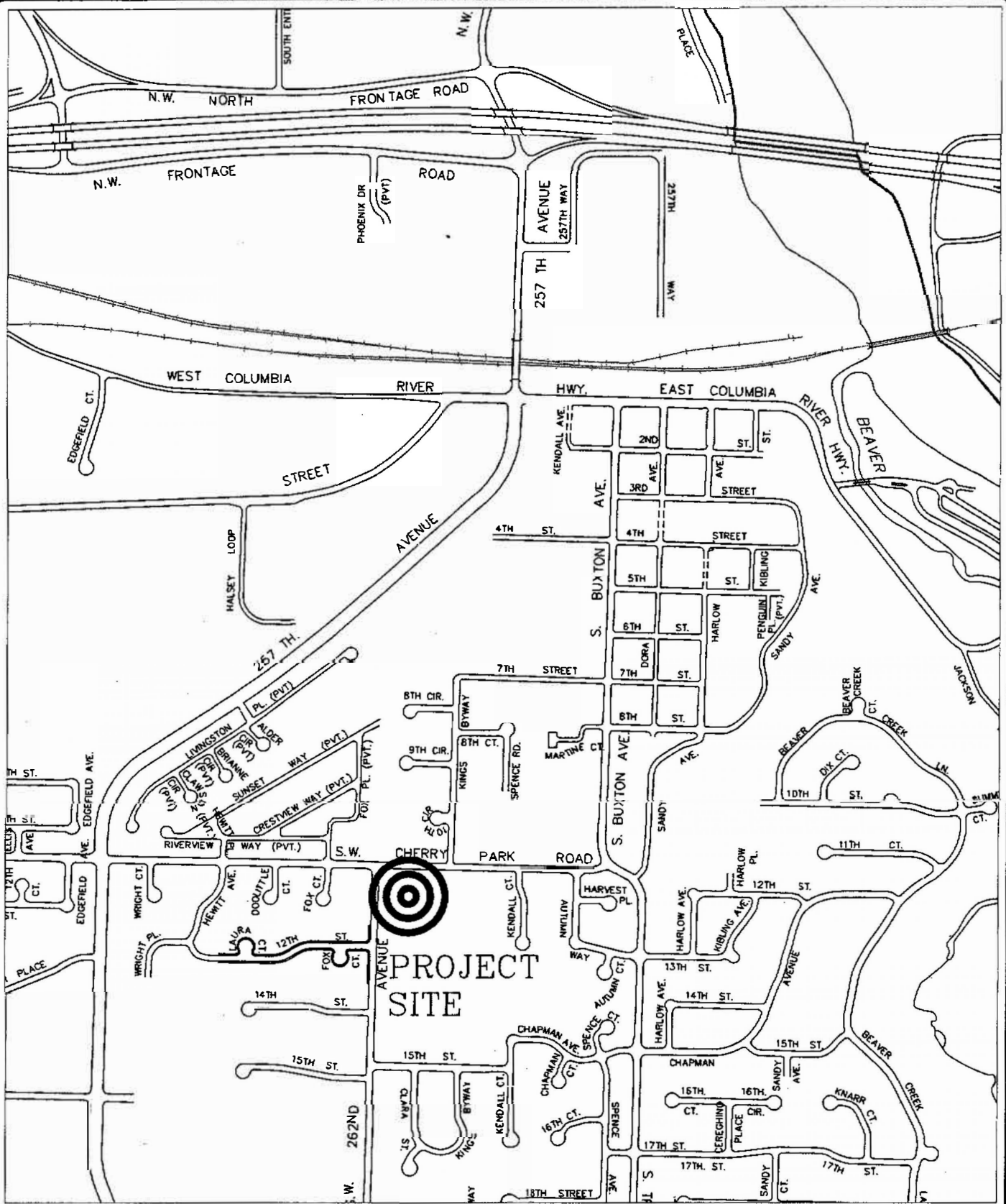
12" ADS-N12
L=21.53'
S=0.0046

MH 4-1
MH OVER EX. LINE
CL STA 46+29.19 (5.00' LT)
RIM 289.50
NEW 12" IE IN 285.38
EX. 18" IE 282.14 (N,S)



TL 4000
IN 3E 368B

CHURCH



PROJECT SITE

EXHIBIT 1

FILE NAME: Troutbas
 TITLE BLOCK: TB8X11
 EXTERNAL REFERENCES: NONE
 PLOT DATE: 3/3/04
 BY: th
 PREVIOUS REVISION DATE: NONE



DEPARTMENT OF PUBLIC WORKS
GENTRY HEIGHTS
VICINITY MAP
 MULTNOMAH COUNTY, OREGON
 3/04