

# RESOLUTION NO. 1675

## A RESOLUTION RECOGNIZING THE COMPLETION OF THE PUBLIC IMPROVEMENTS IN THE SANDY HEIGHTS SUBDIVISION AND ACCEPTING THEM INTO THE CITY'S FIXED ASSET SYSTEM

### THE TROUTDALE CITY COUNCIL FINDS AS FOLLOWS:

1. The construction of the public improvements in the Sandy Heights Subdivision was necessary to meet the demands of public health, safety and welfare.
2. The construction of these public improvements has now been completed.
3. The public improvements have been inspected and found to be in compliance with the City of Troutdale "Construction Standards for Public Works Facilities" and the construction plans and specifications.

### NOW THEREFORE BE IT RESOLVED BY THE COUNCIL OF THE CITY OF TROUTDALE

Section 1. The following public improvements in the Sandy Heights Subdivision are accepted into the City's fixed asset system, valued as follows:

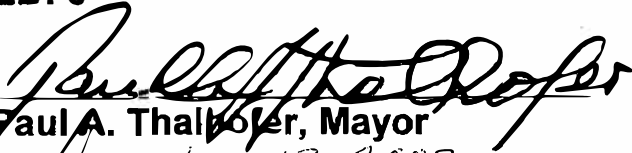
<u>Improvement</u>	<u>Estimated Value</u>
Streets, consisting of approximately 3,800 SY of 3.5" asphaltic concrete and 1,800 linear feet of concrete curb and gutter.	\$ 162,577
Water System, consisting of approximately 1,418 linear feet of 8" ductile iron water main, 105 linear feet of 4" ductile iron water main, and 3 fire hydrants.	93,000
Sanitary Sewer System, consisting of approximately 845 linear feet of 8" PVC sewer main, 1,304 linear feet of 4" ductile iron force main, and 7 manholes.	123,715
Sanitary Sewer Pump Station	129,308
Total	508,600

Section 2. This Resolution is effective upon adoption.

**YEAS: 6**

**NAYS: 0**

**ABSTAINED: 0**

  
Paul A. Thalhoffer, Mayor

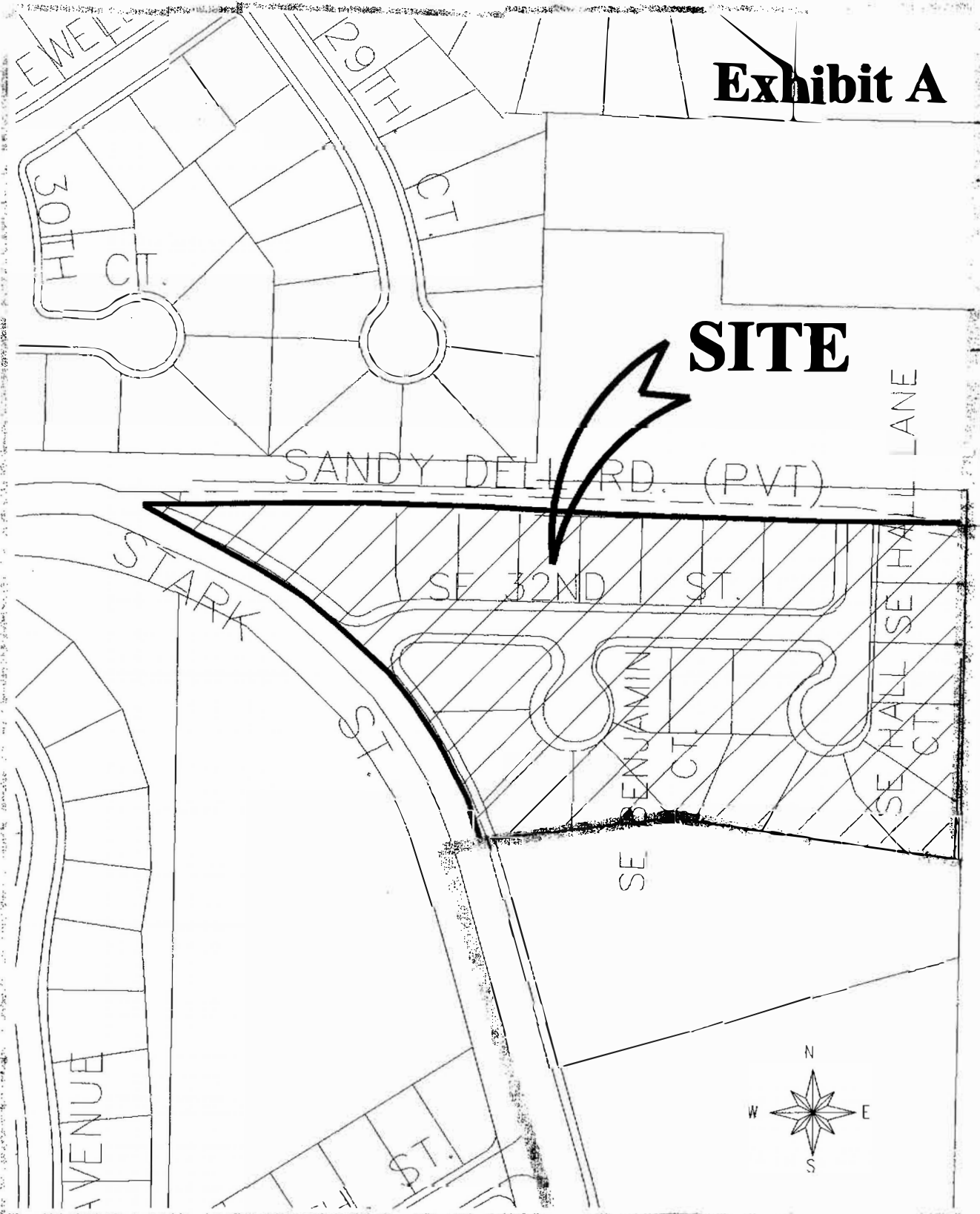
December 12, 2003  
Date:

  
Debbie Stickney, City Recorder

**Adopted: December 9, 2003**

# Exhibit A

## SITE



FILE NAME: TRCUTBAS  
TITLE BLOCK: TB8X11  
EXTERNAL REFERENCES: NONE  
PLOT DATE: 11-24-2003  
BY: W.H.  
PREVIOUS REVISION DATE:



### CITY OF TROUTDALE *Sandy Heights Subdivision* **Site Map**

MULTNOMAH COUNTY, OREGON

**Sandy Heights Subdivision  
Public Improvements Quantity Backup (from As-Builts)**

**Exhibit B**

<b>Item</b>	<b>Component</b>	<b>Description</b>	<b>Quantity</b>
Storm	12" ADS Storm Main	DMH-1 to DMH-2	265.56 LF
	12" ADS Storm Main	DMH-2 to CDS-1	14.39 LF
	12" ADS Storm Main	CDS-1 to DMH-4	10.60 LF
	12" ADS Catch Basin Leads	CB-1 to DMH-1	77.91 LF
		CB-2 to DMH-1	17.72 LF
		CB-3 to DMH-1	33.47 LF
		CB-4 to DMH-2	12.57 LF
		CB-5 to DMH-2	55.00 LF
		CB-6 to DMH-4	56.56 LF
		CB-7 to CB-5 Lead	8.6 LF
12" ADS Storm Main	DMH-5 to Outfall	154 LF	
<i>Total, 12" ADS</i>			<i>706.38 LF</i>
72" RCP Detention Line	72" RCP Detention Line	DMH-3 to DMH-4	107 LF
	72" RCP Detention Line	DMH-4 to DMH-5	87.6 LF
	<i>Total, 72" RCP</i>		<i>194.6 LF</i>
24" Concrete Pipe	24" Concrete Pipe	DMH-3 to DMH-4	5 LF
	24" Concrete Pipe	DMH-4 to DMH-5	15 LF
	<i>Total, 24" Concrete Pipe</i>		<i>20 LF</i>
Catch Basins	CB-1 through CB-7	7 EA	
Manholes	DMH-1 through DMH-5	5 EA	
Treatment Unit	Stormceptor	1 EA	
Sanitary	Manholes	SMH-1 through SMH-7	7 EA
	Pump Station		1 EA
	8" PVC Sanitary Sewer Main	SMH-1 to SMH-2	199.73 LF
	8" PVC Sanitary Sewer Main	SMH-2 to SMH-3	275.15 LF
	8" PVC Sanitary Sewer Main	SMH-3 to Pump Station	26.6 LF
	8" PVC Sanitary Sewer Main	SMH-4 to SMH-2	112.0 LF
	8" PVC Sanitary Sewer Main	SMH-5 to SMH-6	88.30 LF
	8" PVC Sanitary Sewer Main	SCO-1 to SMH-6	100.66 LF
	8" PVC Sanitary Sewer Main	SMH-6 to Pump Station	42.3 LF
	<i>Total, 8" PVC</i>		<i>844.74 LF</i>
4" Ductile Iron Force Main	Pump Station to SMH-7	1,304.24 LF	
Water	8" Ductile Iron Water Main	From Stark to Hall	581.52 LF
	8" Ductile Iron Water Main	From Stark to SE 35th	701.69 LF
	8" Ductile Iron Water Main	On Hall	135 LF
	<i>Total 8" Ductile Iron</i>		<i>1,418.21 LF</i>
	4" Ductile Iron Water Main	On Hall	105 LF
Fire Hydrants		3 EA	
Street	3.5" AC Pavement	All Streets	34,147 SF
	Curb & Gutter	All Streets	1,800 LF

**RON JOHNSTON ENTERPRISES**

1918 SE 302ND AVENUE, TROUTDALE, OR 97060  
503-661-4414 Fax: 503-661-7315

**ACTUAL COSTS OF SANDY HEIGHTS SUBDIVISION**  
**AS OF FEB 11, 2002**

**STREETS**

Les Brown Excavation	\$ 177,000.00
ACF	\$ 3,527.25
Second Lift Asphalt	\$ 16,050.00
Sharp & Associates (curb)	\$ 26,000.00
	<u>\$162,577.25</u>

**STREET LIGHTS**

North Coast Lighting	\$ 21,841.56
Platt Electric	\$ 236.13
FNW	\$ 2,539.44
Utility Vault	\$ 7,438.00
	<u>\$ 32,103.13</u>

**WATER**

Les Brown Excavation	\$ 93,000.00
----------------------	--------------

**STORM DRAINS**

Les Brown Excavation	\$ 106,000.00
----------------------	---------------

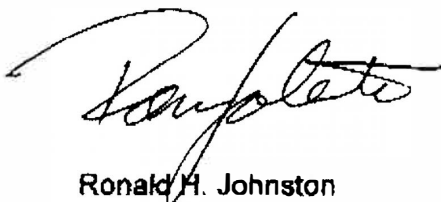
**SEWER**

Les Brown Excavation	\$ 123,714.81
----------------------	---------------

**SEWER PUMP STATION**

PGE	\$ 450.00
Zochert Fence	\$ 1,584.00
Utility Vault	\$ 1,663.00
Electrical Contractor	\$ 4,796.18
Troutdale Sand & Gravel	\$ 3,910.04
Les Brown Excavation	\$ 75,000.00
Familian Northwest	\$ 35,159.72
Crane & Merzeth	\$ 5,000.00
Western Waterproofing	\$ 935.00
DEQ	\$ 810.00
	<u>\$ 129,307.94</u>

I am requesting this item to be placed on a future development reimbursement program.



Ronald H. Johnston