

RESOLUTION NO. 1625

A RESOLUTION RECOGNIZING THE COMPLETION OF A WATER MAIN AND RELATED IMPROVEMENTS FOR THE TROUTDALE TERRACE APARTMENTS AND ACCEPTING THEM INTO THE CITY'S FIXED ASSET SYSTEM

THE TROUTDALE CITY COUNCIL FINDS AS FOLLOWS:

1. The construction of a water main and related improvements associated with the Troutdale Terrace Apartments located on SW 257th Avenue was necessary to meet the demands of public health, safety and welfare.
2. The construction of these improvements has now been completed.
3. These new improvements were inspected by Public Works personnel and found to be in compliance with the City's "Construction Standards for Public Works Facilities".

NOW THEREFORE BE IT RESOLVED BY THE COUNCIL OF THE CITY OF TROUTDALE

Section 1. The following public works facilities associated with the Troutdale Terrace Apartments are accepted into the City's fixed asset system, valued as follows:

| | |
|---|--------------|
| Approximately 400 Lineal Feet of 8" Ductile Iron Water Main | \$ 21,094 |
| 1" Irrigation Meter | 602 |
| 8" Double Check Backflow Prevention Device | 11,166 |
| 4" Meter Vault | 6,205 |
| 6" Backflow Prevention Device | <u>5,086</u> |
| Total | \$ 44,153 |

Section 2. This Resolution is effective immediately upon adoption.

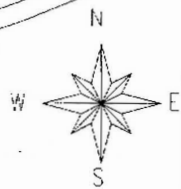
YEAS: 7
NAYS: 0
ABSTAINED: 0


Paul Thayer, Mayor
Dated: 8/29/02

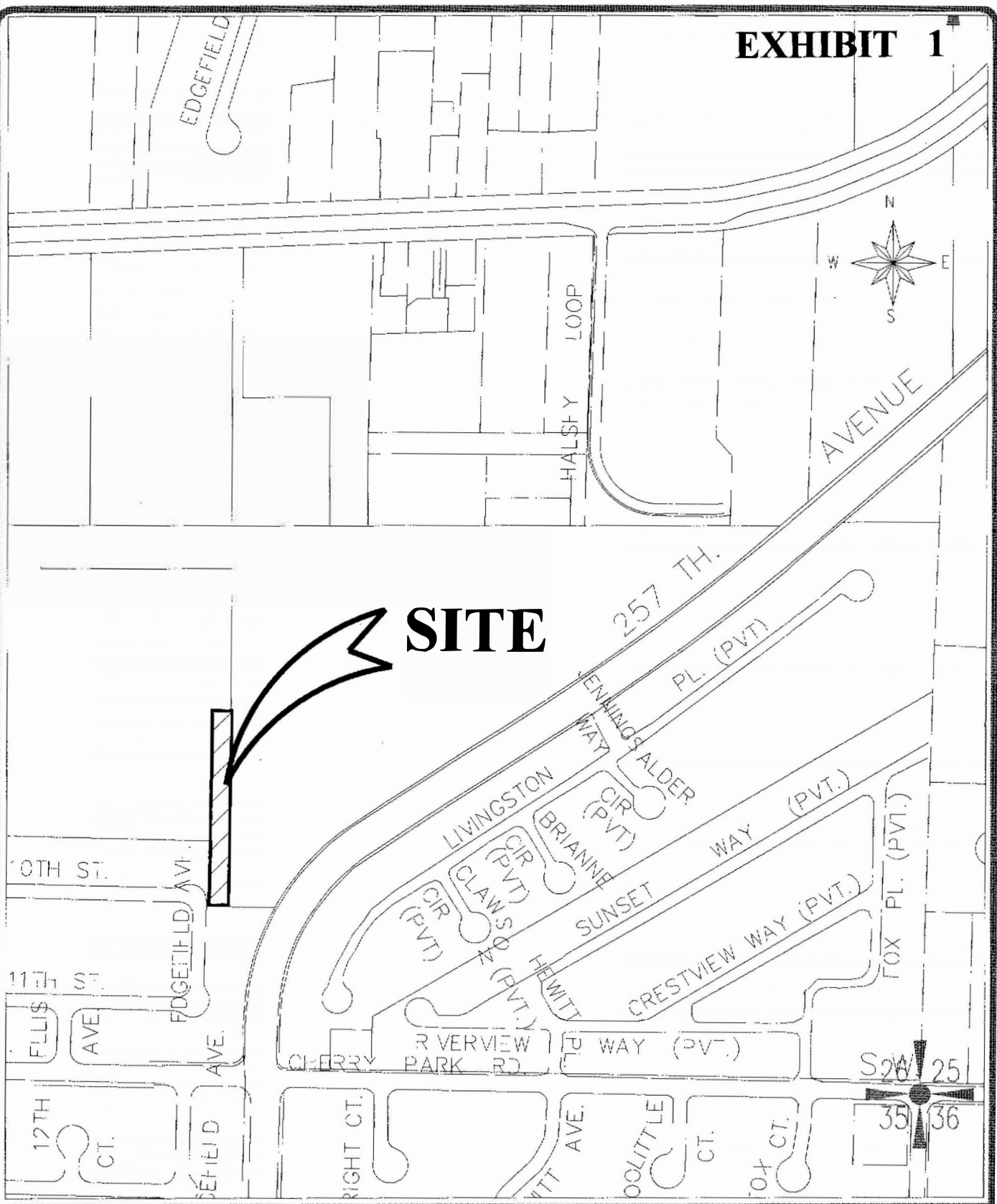
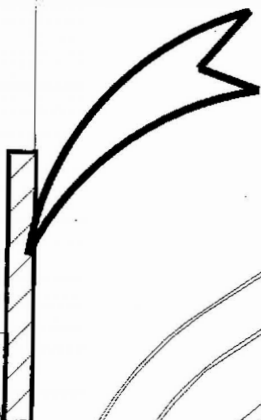

Debbie Stickney, City Recorder

Adopted: August 27, 2002

EXHIBIT 1



SITE



FILE NAME: 1RCUTBAS
TITLE BLOCK: 188X11
EXTERNAL REFERENCES: NCHE
PLOT DATE: 07-30-2002
BY: W.H.
PREVIOUS REVISION DATE:



DEPARTMENT OF PUBLIC WORKS
CITY OF TROUTDALE
Troutdale Terrace Apartments
Water Main Vicinity Map
MULTNOMAH COUNTY, OREGON
JULY 2002