

RESOLUTION NO. 1540

A RESOLUTION RECOGNIZING THE COMPLETION OF THE PUBLIC IMPROVEMENTS ASSOCIATED WITH THE TROUTDALE COMMONS (A.K.A. ALBERTSON'S PLAZA) AND ACCEPTING THEM INTO THE CITY'S FIXED ASSET SYSTEM.

THE TROUTDALE CITY COUNCIL FINDS AS FOLLOWS:

Peter Powell Development, of Kirkland, WA, was the developer and the general contractor of the Troutdale Commons commercial site recently constructed. The design civil engineering firm was Pacific Land Design of Portland.

To adequately access this new commercial center, public improvements were necessary. These public improvements consisted of streets, sidewalks, drainage facilities, water and sanitary sewer facilities.

The Public Works Department inspected these public improvements proposed for public ownership, and they were found to be constructed in accordance with the Troutdale City Standards and the project's plans and specifications.

NOW THEREFORE BE IT RESOLVED BY THE COUNCIL OF THE CITY OF TROUTDALE

That the public improvements associated with the Troutdale Commons (a.k.a. Albertson's Plaza), as depicted on Exhibit A, are accepted into the City's fixed assets system, at respective values as shown below:

Streets:

355 l.f. of 36' wide Street @ \$138,022

Water:

D.I. Pipe - 390 lf of 8" diameter @ \$ 20,100
Fire hydrant - 1 each @ 1,500 21,600

Storm:

ADS-N12 Pipe - 80 lf of 12" diameter @ 5,700
Drywell - 2 each of 48" diameter by 20' @ 5,000
Water Pollution Control Manholes - 2 each @ 6,000
Catch Basins - 4 each @ 2,800
19,500

Sanitary:

PVC Pipe - 320 l.f. of 8" diameter @

19,500

Manholes - 4 each of 48" diameter @

10,000

29,500

GRAND TOTAL

\$208,622

YEAS:

6

NAYS:

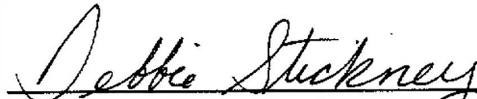
0

ABSTAINED:

0


Paul Thalhofer, Mayor

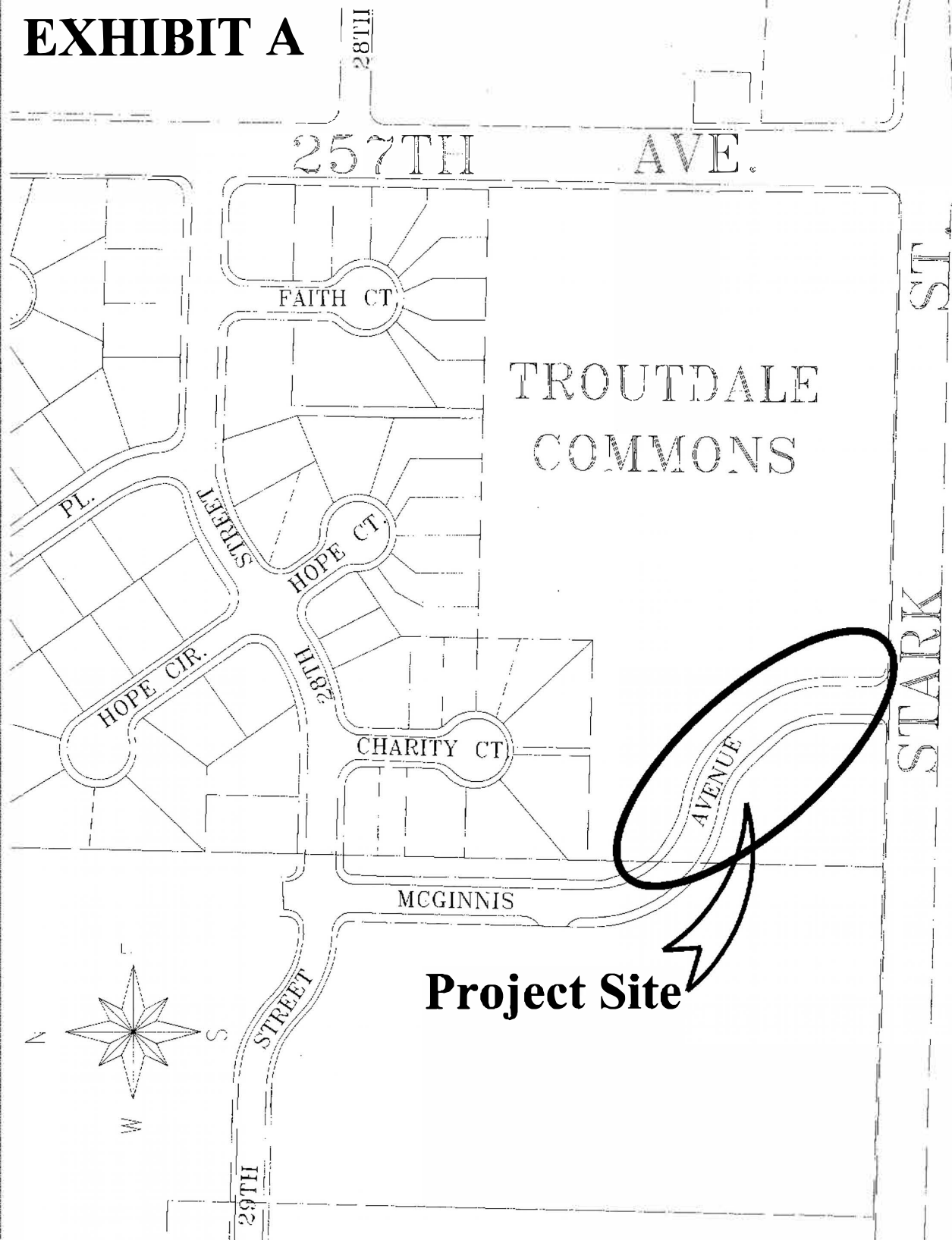
Dated: 2-28-01


Debbie Stickney, City Recorder

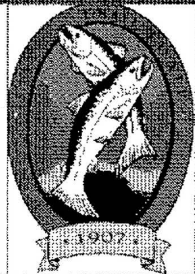
Adopted: 2-27-01

C:\RESOL01

EXHIBIT A



FILE NAME: Troutbas
TITLE BLOCK: TB2X11
EXTERNAL REFERENCES: NONE
PLOT DATE: 02-16-2001
BY: M.H.
PREVIOUS REVISION DATE: NONE



DEPARTMENT OF PUBLIC WORKS
CITY OF TROUTDALE
SW McGinnis Ave.
Troutdale Commons/Albertson's
MULTNOMAH COUNTY, OREGON
FEBRUARY 2001