

RESOLUTION NO. 1515

A RESOLUTION RECOGNIZING THE COMPLETION OF THE PUBLIC IMPROVEMENTS ASSOCIATED WITH THE CHERRY MEADOWS SUBDIVISION AND ACCEPTING THEM INTO THE CITY'S FIXED ASSET SYSTEM.

THE TROUTDALE CITY COUNCIL FINDS AS FOLLOWS:

It was found that the construction of the public facilities for the Cherry Meadows subdivision was necessary to meet the demands of public health, safety and welfare.

The construction of these new improvements: streets, underground utilities (water, sanitary and storm sewers) and streetlights, have been completed.

These new facilities have been inspected by the Public Works Department and found to be in compliance with the City of Troutdale "Construction Standards for Public Works Facilities," and the construction plans and specifications.

NOW THEREFORE BE IT RESOLVED BY THE COUNCIL OF THE CITY OF TROUTDALE

That the following public works facilities of the Cherry Meadows subdivision are accepted into the City's fixed asset system:

<u>Item No.</u>	<u>Qty</u>	<u>Units</u>	<u>Unit Cost</u>	<u>Amount</u>
<u>Streets & Earthwork</u>				
Mobilization, De-Mobilization Clean-up	1	LS	\$15,000.00	\$15,000
1"-0 Crushed Aggregate - 8"Thick	1,614	SY	7.50	12,105
Asphalt Concrete- Class "B"	1,614	SY	3.80	6,134
Standard Concrete Curb, 6" Reveal	1,223	LF	7.00	8,561
Standard Concrete Sidewalk	99	SY	22.50	2,228
6" Concrete Walkway on 6" Crushed Rock	102	SY	26.00	2,652
Erosion Control	1	LS	4,000.00	4,000
Street Barricades	1	EA	750.00	750
Subtotal Street Construction				<u>\$51,430</u>
<u>Storm System</u>				
12" ADS N-12 CB Lead - In New Street	66	LF	32.00	2,112
12" ADS N12 Storm - In New Street (0'- 8)	15	LF	32.00	480
48" Pollution Control Storm Manhole	1	LS	2,000.00	2,000
Drywell	1	LS	4,500.00	4,500
Standard Catch Basin	3	EA	1,100.00	<u>3,300</u>
Subtotal Storm System				<u>\$12,392</u>

Sanitary Sewer System

8" PVC Sanitary, 0'- 12'- In New Street	651	LF	30.00	\$19,530
Sanitary Services	467	LF	29.00	13,543
48" Std. Manhole, 0'- 12'	5	EA	1,750.00	8,750
Sanitary Connections	2	EA	1,200.00	<u>2,400</u>
Subtotal Sanitary System				\$44,223

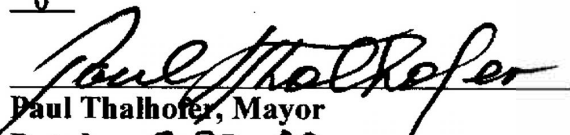
Water System

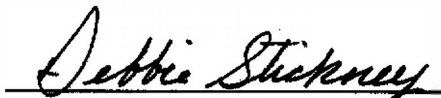
6" DI Water Main	333	LF	32.00	\$10,656
8" DI Water Main	328	LF	36.00	11,808
Fire Hydrant Assembly	1	EA	1,700.00	1,700
2" Blow Off Assembly	2	EA	250.00	500
8" x 6" Tee	1	EA	300.00	300
6" Gate Valve	1	EA	425.00	425
8" Gate Valve	1	EA	500.00	500
Double 1" Water Services	7	EA	400.00	2,800
Single 3/4" Water Services	2	EA	350.00	<u>700</u>
Subtotal Water System				\$29,389

Cost Total - Summary

Street Construction	\$ 51,430
Storm System	12,392
Sanitary System	44,223
Water System	<u>29,389</u>
TOTAL	137,434

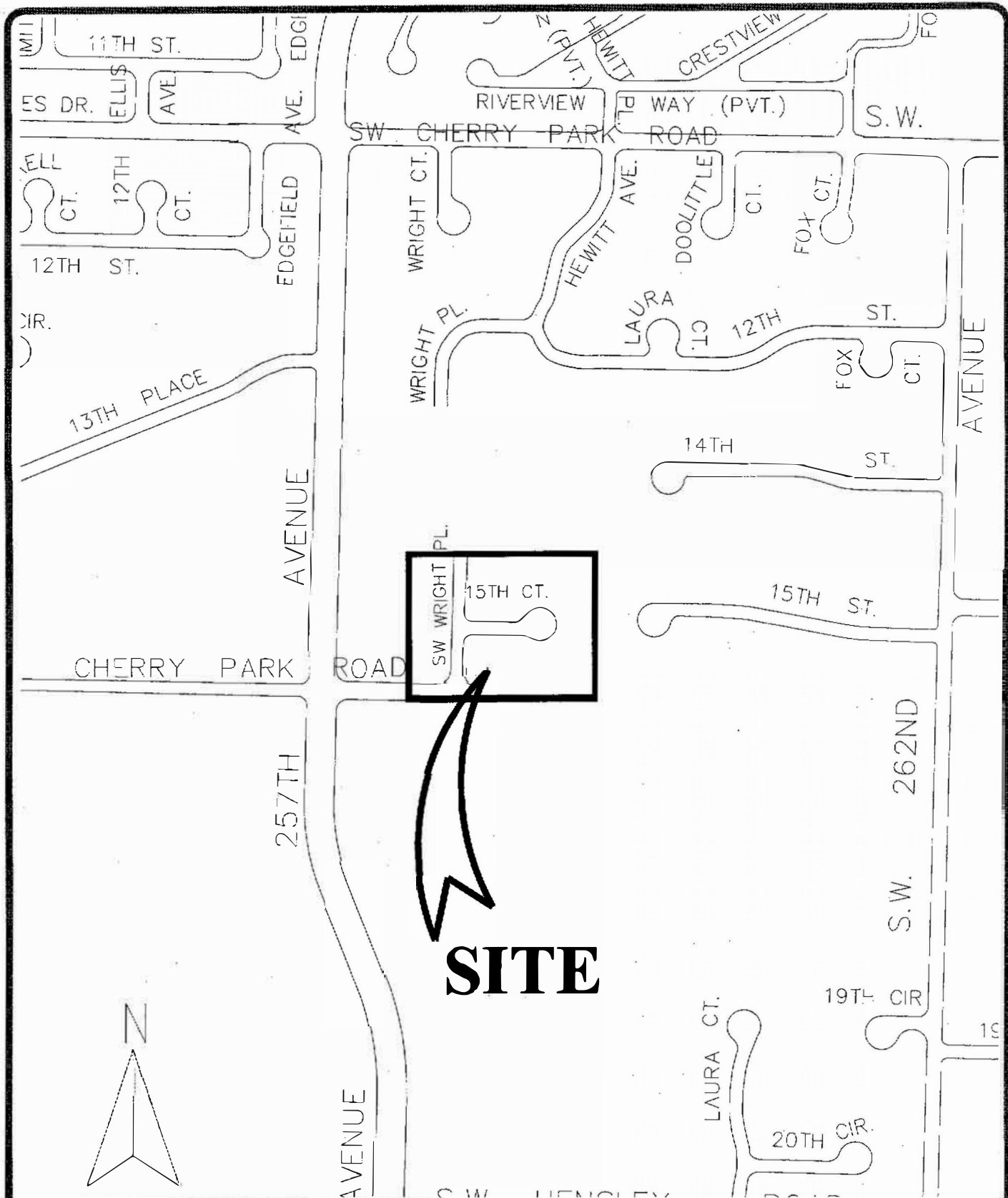
YEAS: 5
NAYS: 0
ABSTAINED: 0


Paul Thalhofer, Mayor
Dated: 8-23-00


Debbie Stickney, City Recorder

Adopted: 8-22-00

C:RESOL00



SITE

FILE NAME: TROUTBAS
 TITLE BLOCK: T88X11
 EXTERNAL REFERENCES: NONE
 PLOT DATE: 08-14-2000
 BY: W.H.
 PREVIOUS REVISION DATE:



DEPARTMENT OF PUBLIC WORKS
CITY OF TROUTDALE
Exhibit 1/Site's Vicinity Map
Cherry Meadows Subdivision
 MULTNOMAH COUNTY, OREGON
 AUGUST 2000