

RESOLUTION NO. 1417

A RESOLUTION RECOGNIZING THE COMPLETION OF THE PUBLIC IMPROVEMENTS ASSOCIATED WITH THE ROYAL OAKS SUBDIVISION AND ACCEPTING THEM INTO THE CITY'S FIXED ASSET SYSTEM.

WHEREAS, it was found that the construction of the public facilities for this subdivision was necessary to meet the demands of public health, safety, and welfare; and

WHEREAS, the construction of these facilities has now been completed; and

WHEREAS, these new improvements have been inspected by the Public Works Department and found to be in compliance with the City of Troutdale "Construction Standards for Public Works Facilities", and the construction plans and specifications.

NOW THEREFORE BE IT RESOLVED BY THE COUNCIL OF THE CITY OF TROUTDALE

That the following public works facilities of the Royal Oaks subdivision are accepted into the City's fixed asset system:

Streets

AC paving (3.5")	535 TN	@	43.00	\$ 23,005
Base Rock	1,222 TN	@	13.00	15,886
Curb & Gutter	1,744 LF	@	9.00	15,696
Sidewalk (4")	942 SF	@	4.00	3,768
Finish Grading	43,898 SF	@	.08	<u>3,512</u>
	Total Streets			61,867

Storm System

Storm Drain - 12"	165 LF	@	18.00	\$ 2,970
Storm Drain - 30"	20 LF	@	45.00	900
Storm Drain - 48"	285 LF	@	90.00	25,650
Catch Basins	8 EA	@	1,000.00	8,000
Manhole	4 EA	@	2,529.00	10,116
Manhole - 60"	1 EA	@	3,500.00	3,500
Reducers 48"x30"	4 EA	@	825.00	3,300
Concrete Cap	1,150 SF	@	6.00	6,900
Tie-in @ Manhole	1 EA	@	750.00	750
Work in R-O-W	20 LF	@	120.00	2,400
Manhole - 60"	2 EA	@	1,500.00	3,000
Drain - 12"	17 LF	@	18.00	<u>306</u>
	Total Storm Drain			67,792

Sanitary Sewer System

Sewerline - 4"	587 LF	@	18.00	\$ 10,566
Sewerline - 8"	585 LF	@	27.00	15,795
Manholes - 48"	4 EA	@	2,000.00	8,000
Manholes	2 EA	@	3,700.00	7,400
Tap @ SS	2 EA	@	300.00	600
Tap @ MH	1 EA	@	300.00	300
Work in R-O-W	40 LF	@	40.00	<u>1,600</u>
Total Sanitary Sewer				44,261

Water System

Waterline 8"	882 LF	@	22.00	\$ 19,404
Bends 8"	11 EA	@	350.00	3,850
Water Service Sgl	3 EA	@	350.00	1,050
Water Service Dbl	8 EA	@	400.00	3,200
Fire Hydrant Asmbly	2 EA	@	1,800.00	3,600
Water Tie-ins	2 EA	@	1,800.00	3,600
Work in R-O-W	100 LF	@	40.00	4,000
CDF Backfill	30 CY	@	60.00	<u>1,800</u>
Total Waterline System				40,504

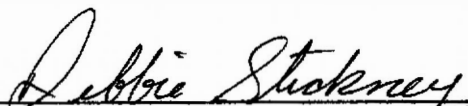
Total Utilities

\$214,424

YEAS: 6
NAYS: 0
ABSTAINED: 0

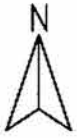

Paul Thalhofer, Mayor

Dated: 11-16-98


Debbie Stickney, Acting City Recorder

Adopted: 11-10-98

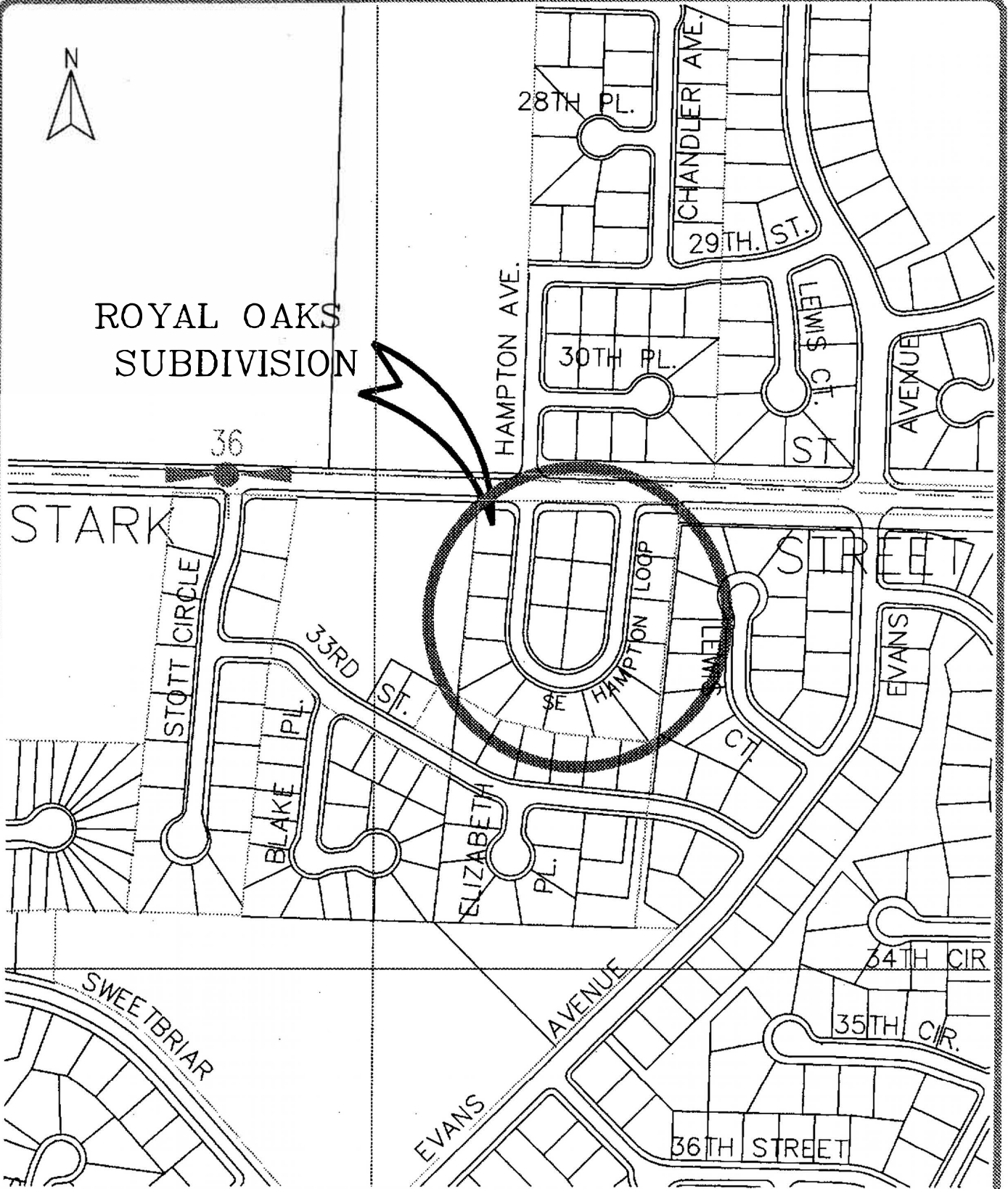
C:\RESOL98



ROYAL OAKS SUBDIVISION

36

STARK



FILE NAME: *TROUTBAS*
TITLE BLOCK: *TB8X11*
EXTERNAL REFERENCES: *NONE*
PLOT DATE: *10-30-98*
BY: *W.H.*
PREVIOUS REVISION DATE:



DEPARTMENT OF PUBLIC WORKS
CITY OF TROUTDALE
Royal Oaks Subdivision
Site / Vicinity Map
MULTNOMAH COUNTY, OREGON
NOVEMBER 1998