

RESOLUTION NO. 1360

A RESOLUTION RECOGNIZING THE COMPLETION OF THE PUBLIC IMPROVEMENTS IN THE BELLINGHAM PARK SUBDIVISION AND ACCEPTING THEM INTO THE CITY'S FIXED ASSET SYSTEM

WHEREAS, it was found that the construction of the public facilities in the Bellingham Park subdivision was necessary to meet the demands of public health, safety and welfare; and

WHEREAS, the construction of these public facilities have now been completed; and

WHEREAS, these new improvements have been inspected by the Public Works Department and these facilities were found to be in compliance with the Troutdale Construction Standards for Public Works Facilities, construction plans and specifications; and

WHEREAS, a "Certificate of Completion" has been issued to Cascade Communities, Inc.

NOW THEREFORE BE IT RESOLVED BY THE COUNCIL OF THE CITY OF TROUTDALE

The following public works facilities are accepted into the City's fixed asset system:

ITEM	QTY	UNITS	UNIT COST	AMOUNT
STREET CONSTRUCTION				
Mobilize/Demobilization/Cleanup	1	LS	\$ 14,147.00	\$ 14,147
Sub-Grade Stabilization	39	CY	24.00	933
Geotextile Fabric	2,849	SY	1.35	3,846
1"-0" Crushed Aggregate Base	636	CY	26.00	16,536
2" Asphalt Concrete 'Class B'	2,849	SY	5.04	14,359
Standard Concrete Curb, 6" Reveal	1,316	LF	7.21	9,488
Handicap Ramps	6	EA	980.00	5,880
10' Wide Asphalt Concrete Access Road	271	LF	21.00	5,691
Monument Boxes	7	EA	365.00	2,555
Removable Bollard	1	EA	360.00	360
Erosion Control	1	LS	7,700.00	7,700
SUB-TOTAL STREET CONSTRUCTION				81,495

ITEM	QTY	UNITS	UNIT COST	AMOUNT
STORM SEWER SYSTEM				
12" ADS N-12 CB Lead	192	LF	\$ 29.00	\$ 5,568
12" ADS N-12 Storm Drain, in Street	70	LF	34.50	2,415
12" ADS N-12 Storm Drain, Native Bkfil	912	LF	24.50	22,344
48" Std. Storm Manhole, 5"-8" deep	2	EA	1,800.00	3,600
48" Flat-top Storm Manhole	7	EA	1,800.00	12,600
60" Inside Drop Storm Manhole, 18" Dp	1	EA	5,400.00	5,400

Standard Cleanout	1	EA	660.00	660
Standard Catch Basin	5	EA	1045.00	5,225
6" Storm Sewer Lateral	50	LF	26.00	1,300
6" Perforated Pipe w/ Fabric Wrap	200	LF	26.00	5,200
WQ Inlet Control Structure	1	EA	1,785	1,785
SUB-TOTAL STORM SYSTEM				66,097

ITEM	QTY	UNITS	UNIT COST	AMOUNT
SANITARY SEWER SYSTEM				
8" PVC Sanitary, 5'-12' Depth	814	LF	\$ 39.70	\$ 32,316
8" PVC Sanitary, 12'-16' Depth	180	LF	54.60	9,828
4" Sanitary Services	672	LF	26.90	18,077
48" Standard Manhole 5'-12' Depth	4	EA	1,825.00	7,300
48" Standard Manhole 12'-16' Depth	1	EA	2,540.00	2,540
Sanitary Connections	1	EA	9,500.00	9,500
SUB-TOTAL SANITARY SYSTEM				79,561

ITEM	QTY	UNITS	UNIT COST	AMOUNT
WATER SYSTEM				
8" DI Water Main	659	LF	\$ 28.70	\$ 18,913
4" DI Water Main	40	LF	24.70	988
Fire Hydrant Assembly	2	EA	1,890.00	3,780
Air Release Valve Assembly	1	EA	855.00	855
8" Gate Valve	2	EA	535.00	1,070
4" Gate Valve	1	EA	370.00	370
4" Water Meter Vault (687-WA)	1	EA	3,210.00	3,210
Connect to Stark Street Water Main	1	EA	1,975.00	1,975
Remove Blowoff & Connect to Existing	1	EA	515.00	515
Double 1" Water Services	9	EA	265.00	2,385
Single 3/4" Water Services	2	EA	230.00	460
SUB-TOTAL WATER SYSTEM				34,521

COST TOTAL SUMMARY:

Street Construction	\$ 81,495
Storm System	66,097
Sanitary System	79,561
Water System	<u>34,521</u>
Total	261,674

YEAS: 7
 NAYS: 0
 ABSTAINED: 0

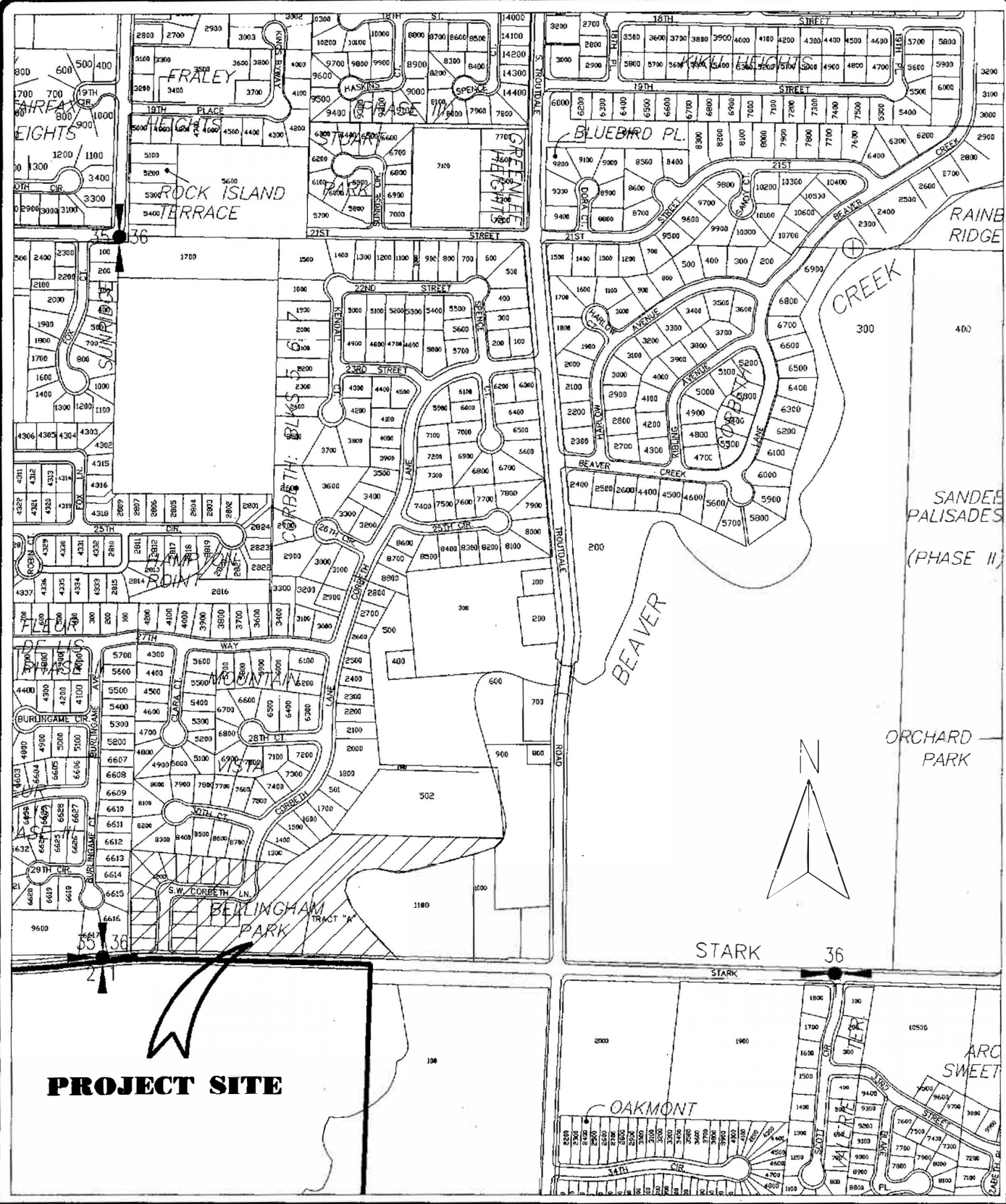

Paul Thalhoffer, Mayor

Dated: 1-30-98


George Martínez, City Recorder

Adopted: 1-27-98

C:\RESOL98



PROJECT SITE



DEPARTMENT OF PUBLIC WORKS
CITY OF TROUTDALE
BELLINGHAM PARK SUBDIVISION
(VICINITY MAP)
 MULTNOMAH COUNTY, OREGON
 JANUARY 1998

FILE NAME: Troutbas
 TITLE BLOCK: TBX11
 EXTERNAL REFERENCES: NONE
 PLOT DATE: 01-21-98
 BY: W.H.
 PREVIOUS REVISION DATE: NONE