

RESOLUTION NO. 1303

A RESOLUTION RECOGNIZING THE COMPLETION OF THE PUBLIC WORKS FACILITIES IN PHASE II OF THE STRAWBERRY MEADOWS SUBDIVISION AND ACCEPTING THEM INTO THE CITY'S FIXED ASSET SYSTEM.

WHEREAS, it was found that the construction of the public facilities in the Strawberry Meadows Phase II subdivision was necessary to meet the demands of public health, safety and welfare; and

WHEREAS, the construction of these public improvements has been completed; and

WHEREAS, City staff has inspected these improvements and found them to be in compliance with the Troutdale City Standards, plans and specifications.

NOW THEREFORE BE IT RESOLVED BY THE COUNCIL OF THE CITY OF TROUTDALE

That the following public works facilities in the Strawberry Meadows Subdivision Phase II are accepted into the City's fixed asset system:

FACILITIES

VALUE

STREETS:

SE 10th Street 850 l.f.	\$ 69,643.29
SE Dix Court 300 l.f.	24,579.98
SE 11th Court 450 l.f.	<u>36,869.98</u>
Total Linear Feet 1600 l.f.	131,093.25

STREETS COMPONENTS:

2400 l.f. of 5 foot Concrete Walk	33,360.00
4 Wheel Chair Ramps	1,800.00
3423 l.f. Concrete Curb & Gutter	23,105.25
1 lump sum Asphalt Concrete & Base	71,628.00
3 Barricades	450.00
5 Survey Monument Boxes	<u>750.00</u>
Total.	131,093.25

STORM WATER COLLECTION SYSTEM:

1285 l.f. Concrete Storm Pipe 12" diameter	\$ 25,798.00
306 l.f. Concrete Storm Pipe 18" diameter	8,721.00
7 Manholes 48-inch diameter	13,600.00
8 Catch Basins	6,000.00
1670 l.f. Laterals 6-inch diameter	<u>24,158.00</u>
Total	78,277.00

SANITARY SEWER COLLECTION SYSTEM:

1272 l.f. of 8-inch PVC Pipe Schedule D3034	\$ 35,874.00
7 Manholes 48-inch diameter	15,600.00
1934 l.f. Laterals of 4-inch PVC	32,508.50
1 lump sum miscellaneous work on Manholes	<u>1,500.00</u>
Total	85,482.50

WATER DISTRIBUTION SYSTEM:

1630 l.f. of 8-inch Ductile Iron Pipe	\$ 45,640.00
2 Gate Valves 8-inch	950.00
3 Fire Hydrant Assemblies	5,850.00
50 Water Services	10,220.00
1 Blow-off Assembly	700.00
1 lump sum Connection to Existing Water Main	<u>2,000.00</u>
Total	65,360.00

PROJECT GRAND TOTAL **\$360,212.75**

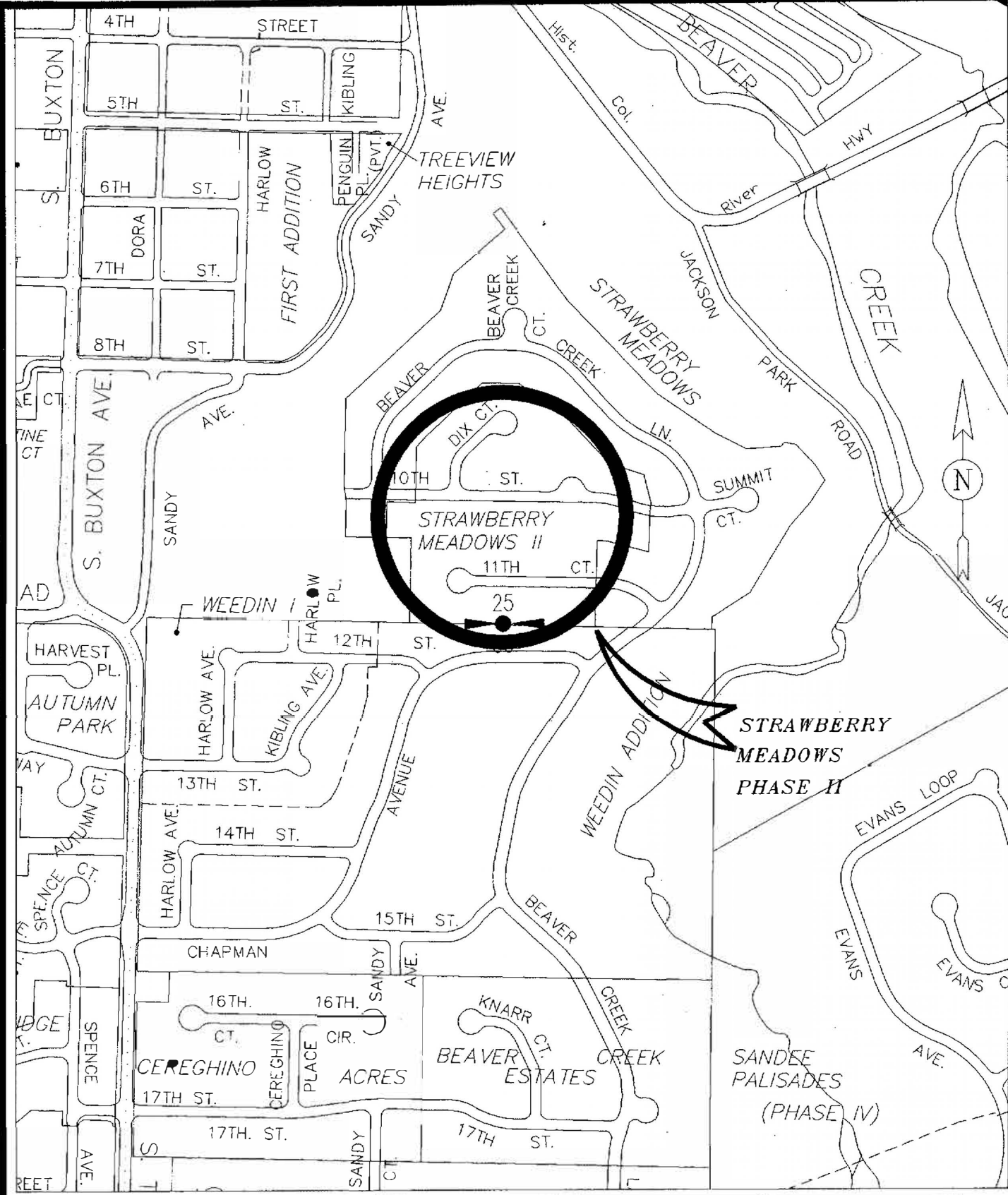
YEAS: 6
NAYS: 0
ABSTAINED: 0


Paul Thalhofer, Mayor

Dated: 3-26-97


George Martinez, City Recorder

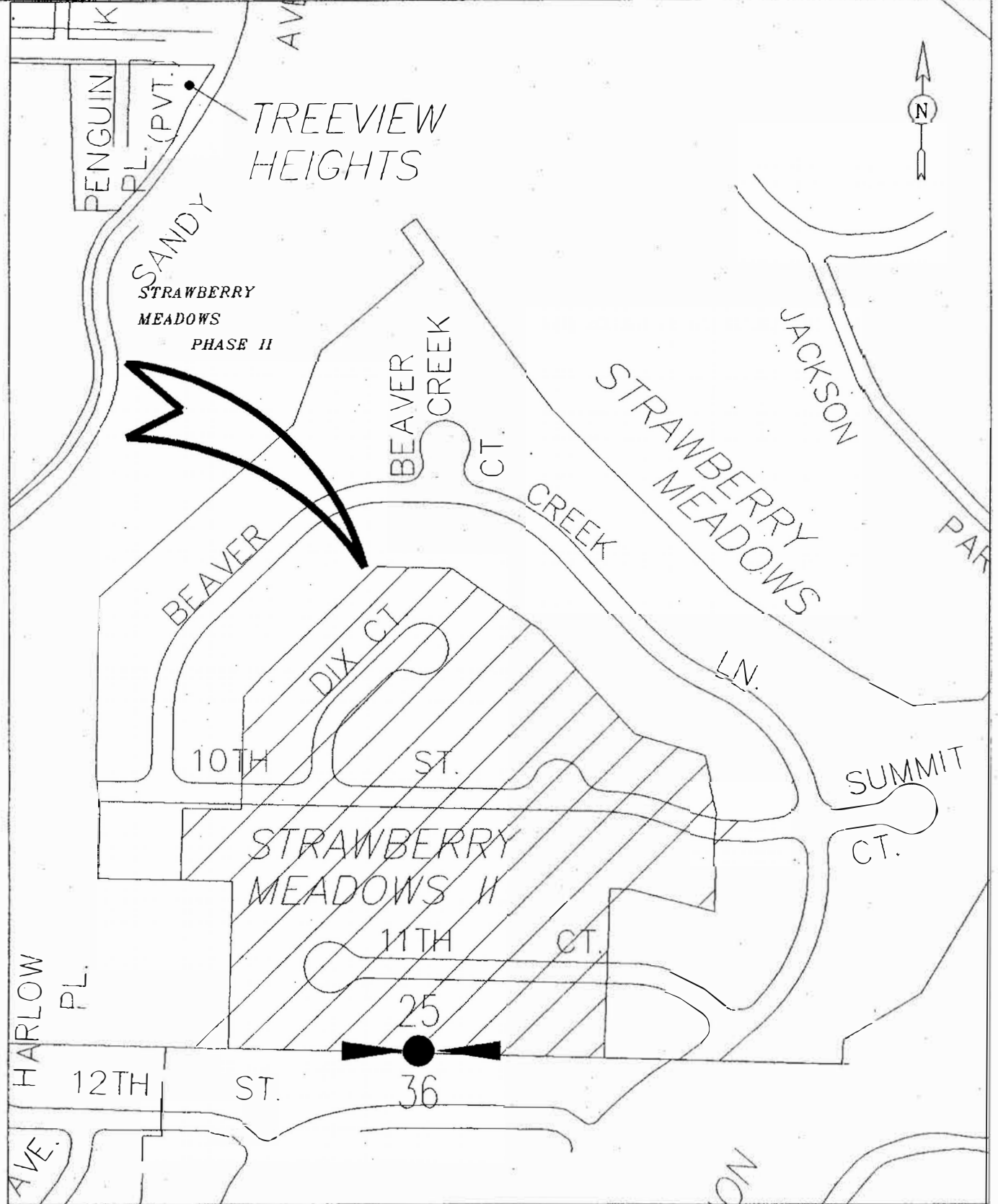
Adopted: 3-25-97



FILE NAME: STR-BRV
 TITLE BLOCK: 188X11
 EXTERNAL REFERENCES: NONE
 PLOT DATE: 3-19-97
 BY: W.H.
 PREVIOUS REVISION DATE: NONE



DEPARTMENT OF PUBLIC WORKS
 CITY OF TROUTDALE
 VICINITY MAP
 MULTNOMAH COUNTY, OREGON
 MARCH, 1997



FILE NAME: STRB
 TITLE BLOCK: TB8X11
 EXTERNAL REFERENCES: NONE
 PLOT DATE: 3-19-97
 BY: W.H.
 PREVIOUS REVISION DATE: NONE



DEPARTMENT OF PUBLIC WORKS
 CITY OF TROUTDALE
 STRAWBERRY MEADOWS II
 MULTNOMAH COUNTY, OREGON
 MARCH, 1997