

RESOLUTION NO. 1292

A RESOLUTION RECOGNIZING THE COMPLETION OF THE SW INDIAN MARY COURT PUBLIC WORKS FACILITIES AND ACCEPTING THEM INTO THE CITY'S FIXED ASSET SYSTEM

WHEREAS, SW Indian Mary Court was a stub street intended to extend to the north at some future date; and

WHEREAS, the expansion and development of Columbia Park has made extension of that stub to the north impossible; and

WHEREAS, it was determined that the best use of this land would be removal of the stub street and subsequent transfer to the Parks Division; and

WHEREAS, the pavement section, curb, and two catch basins were removed and a new straight curb line, a catch basin and appurtenances on adjacent SW 22nd Street were constructed; and

WHEREAS, construction of these improvements has been completed; and

WHEREAS, City staff has inspected this project and found it to be in accordance with the Troutdale City Standards.

NOW THEREFORE BE IT RESOLVED BY THE COUNCIL OF THE CITY OF TROUTDALE

That the following public works facilities associated with the demolition of SW Indian Mary Court are accepted into the City's fixed asset system:

Curbs and Sidewalks valued at	\$3,250.00
Storm Sewer Collection System valued at	<u>\$2,000.00</u>
TOTAL	\$5,250.00

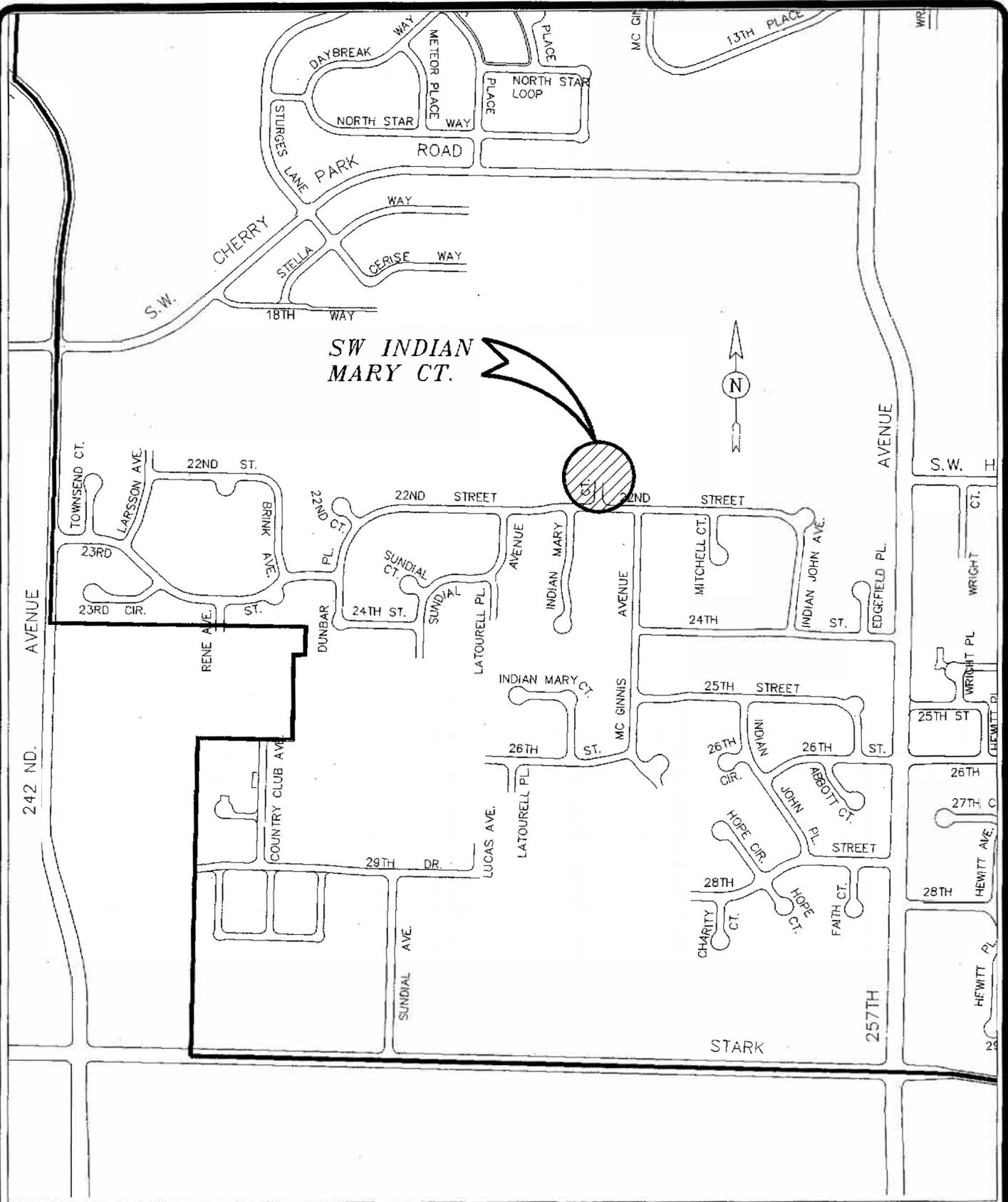
YEAS:	<u>7</u>
NAYS:	<u>0</u>
ABSTAINED:	<u>0</u>


Paul Thalhoffer, Mayor

Dated: 1-16-97


George Martinez, City Recorder

Adopted: 1-14-97



FILE NAME: SW INDIAN MARY CT
 TITLE BLOCK: TB8X11
 EXTERNAL REFERENCES: NONE
 PLOT DATE: 01-07-97
 BY: J.M
 PREVIOUS REVISION DATE: NONE



DEPARTMENT OF PUBLIC WORKS
CITY OF TROUTDALE
SW INDIAN MARY COURT
DEMOLITION PROJECT
 MULTNOMAH COUNTY, OREGON
 JANUARY 1997