

RESOLUTION NO. 793-R

A RESOLUTION GRANTING A UTILITY EASEMENT ACROSS PROPERTY IN SECTION 25, T1N, R3E, W.M., MULTNOMAH COUNTY, STATE OF OREGON, TO PORTLAND GENERAL ELECTRIC COMPANY

WHEREAS, such property is needed for the purpose of erecting, maintaining, repairing, rebuilding, operating and patrolling electric power lines and appurtenant signal or communication lines, and all uses directly or indirectly necessary thereto.

WHEREAS, such use shall include the necessary erection of poles, towers, wires, cables, guys, supports and appurtenances and the protection thereof from fire and other hazards, and

WHEREAS, such use shall include keeping the property free from structures, equipment, trees, vines, brush and any and all other obstructions of any kind, and

WHEREAS, Troutdale has the right to use the property for all purposes not inconsistent with the uses and purposes of the easement.

NOW, THEREFORE, BE IT RESOLVED BY THE COMMON COUNCIL OF THE CITY OF TROUTDALE THAT:

The City does hereby grant the utility easement described as follows:

Situated in Section 25, Township 1 North, Range 3 East, Willamette Meridian.

Beginning at a point that bears North $86^{\circ} 04'$ East, 3.48 feet from a 1 inch iron pipe located at the Southerly interior corner of the tract of land as described in Book 745, Page 580, Deed Records of said county; thence North $3^{\circ} 08' 15''$ West, 0.68' feet to point "B"; thence North $3^{\circ} 01' 37''$ West 167.92 feet to the terminus of said centerline.

Together with a centerline beginning at said point "B"; thence North $85^{\circ} 23' 35''$ East 169.04 feet; thence North $85^{\circ} 07' 32''$ East, 58.3" feet to the terminus of said centerline.

The above-described centerlines are shown on PGE Drawing E-7926, attached hereto as Exhibit 'A' which by reference thereto is made a part hereof.

ADOPTED BY THE COMMON COUNCIL OF THE CITY OF TROUTDALE THIS
23RD DAY OF JANUARY, 1990.

YEAS 6

NAYS 0

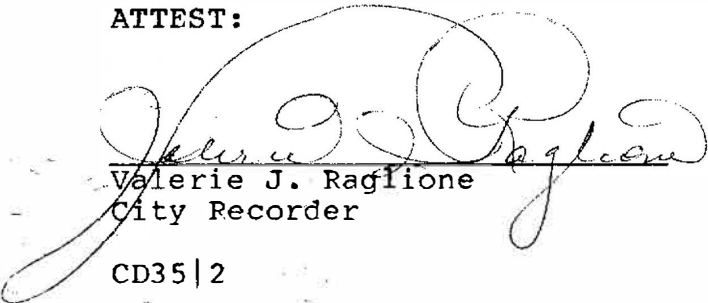
ABSTAINED 0



Sam K. Cox, Mayor

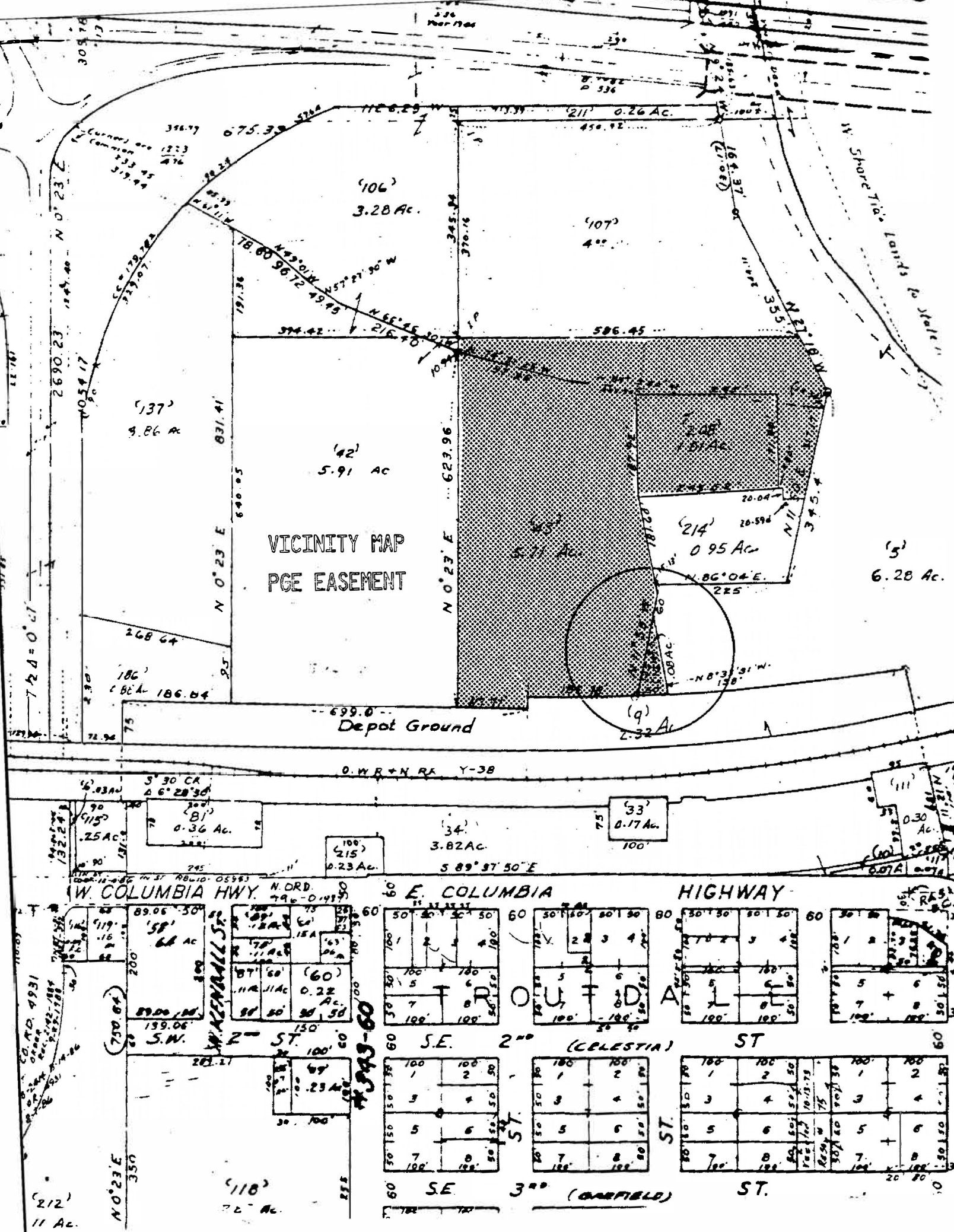
Date Signed: 1-24-90

ATTEST:



Valerie J. Raglione
City Recorder

CD35|2



VICINITY MAP
PGE EASEMENT

Depot Ground

W. COLUMBIA HWY.

E. COLUMBIA HIGHWAY

ROUTED ALLEY

S.E. 2ND (CELESTIA) ST.

S.E. 3RD (GARFIELD) ST.

W. KENALL ST.
S.N.
2ND ST.

(212)
11 Ac.

(118)
22 Ac.

(5)
6.28 Ac.

(9)
2.32 Ac.

(186)
186.64

(137)
9.86 Ac.

(42)
5.91 Ac.

(45)
5.71 Ac.

(214)
0.95 Ac.

(106)
3.28 Ac.

(107)
4.00 Ac.

(123)
476

(536)

(536)

305.78

11.78

37.81

110.00

132.24

139.06

255

255

255

255

255

255

255

255

255

255

255

255

255

255

255

255

255

255

255

255

255

255

255

255

255

255

255

255

255

255

255

255

255

255

255

255

255

255

255

255

255

255

255

255

255

255

255

255

255

255

255

255

255

255

255

255

255

255

255

255

255

255

255

255

255

255

255

255

255

255

255

255

255

255

255

255

255

255

255

255

255

255

255

255

255

255

255

255

255

255

255

255

255

255

255

255

255

255

255

255

255

255

255

255

255

255

255

255

255

255

255

255

255

255

255

255

255

255

255

255

255

255

255

255

255

255

255

255

255

255

255

255

255

255

255

255

255

255

255

255

255

255

255

255

255

255

255

255

255

255

255

255

255

255

255

255

255

255

255

255

255

255

255

255

255

255

255

255

255

255

255

255

255

255

255

255

255

255

255

255

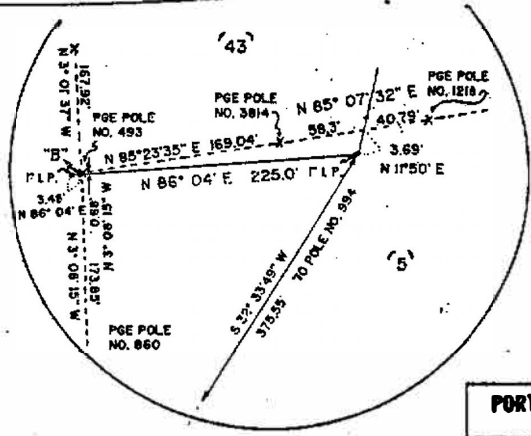
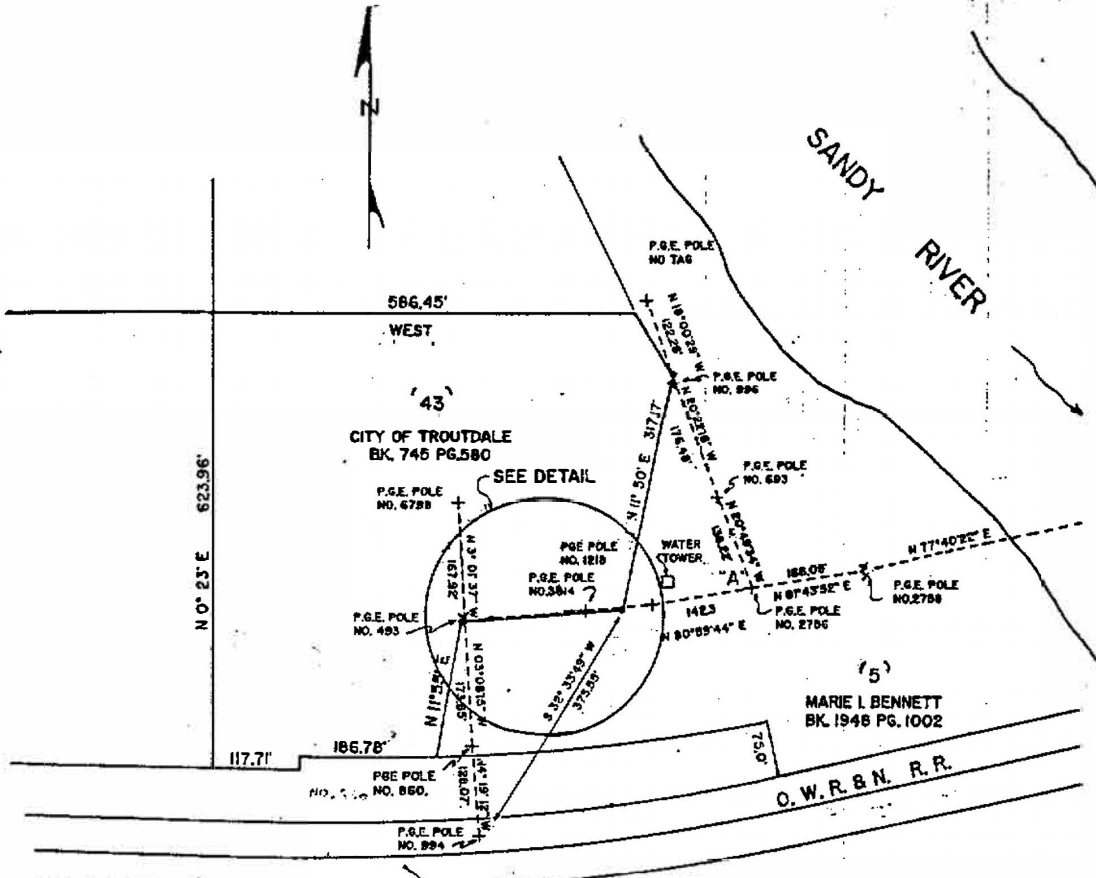
255

255

255

255

UTILITY EASEMENT - EXHIBIT A



DETAIL
NOT TO SCALE

BASIS OF BEARINGS:
DEEDS

PORTLAND GENERAL ELECTRIC CO. PORTLAND, OREGON		
TO ACCOMPANY POWER LINE EASEMENT MARIE I. BENNETT SEC. 25, T. 1 N. R. 3 E. W. M. MULT. CO. OR.		
SCALE: 1" = 200'	DATE: 8-30-89	
DRAWN BY: R.D.L.	TRACED BY:	CHECKED: A.D.O.
APPROVED: <i>[Signature]</i>		
DRG. NO. E-7926		