

RESOLUTION NO. 584-R

A RESOLUTION ACCEPTING DEDICATED STREETS, PARK, AND PUBLIC IMPROVEMENTS FOR USE BY THE PUBLIC.

WHEREAS, the streets and park below named, which are recorded on the final plat of Corbeth, Blocks 5, 6, and 7, located within the City of Troutdale, have been dedicated to the City of Troutdale, and

WHEREAS, the public improvements, required as a condition of approval, have been constructed to City of Troutdale standards, and

WHEREAS, the City Engineer, Community Services Director, and Facilities Maintenance Superintendent have inspected the streets, public improvements, and park below named, and are recommending City acceptance of the below named improvements:

NOW, THEREFORE BE IT PASSED BY THE COMMON COUNCIL OF THE CITY OF TROUTDALE, THAT:

The City does hereby accept the following streets and park as dedicated streets and park, and the public improvements below named to be operated and maintained by the City of Troutdale, for use by the general public from this date forward.

NAME OF RECORDED STREETS:

1. S. Troutdale Road
2. SW Corbeth Lane
3. SW Kendall Court
4. SW Spence Court
5. SW 22nd Street
6. SW 23rd Street
7. SW 25th Circle
8. SW 26th Circle

NAME OF DEDICATED PARK:

1. Tract "A"

NAME OF PUBLIC IMPROVEMENTS:

1. Water Lines
2. Storm Sewers
3. Sanitary Sewer Lines

PASSED BY THE COMMON COUNCIL OF THE CITY OF TROUTDALE THIS first DAY OF

April, 1985

YEAS 6

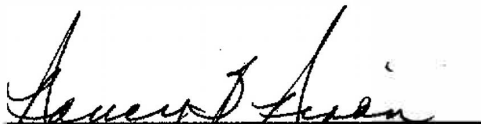
NAYS 0



Sam K. Cox, MAYOR

Date Signed: 4-1-85

ATTEST:



Nancy B. Nixon
FINANCE DIRECTOR/CITY RECORDER

* Map attached to resolution.

SITUATED IN THE S. W. 1/4 SECTION 36, T. 1 N., R. 3 E., W. M.
CITY OF TROUTDALE-MULTNOMAH COUNTY, OREGON
 SURVEYED APRIL, 1980

BY: MARX & CHASE, INCORPORATED
 SHEET 1 OF 2

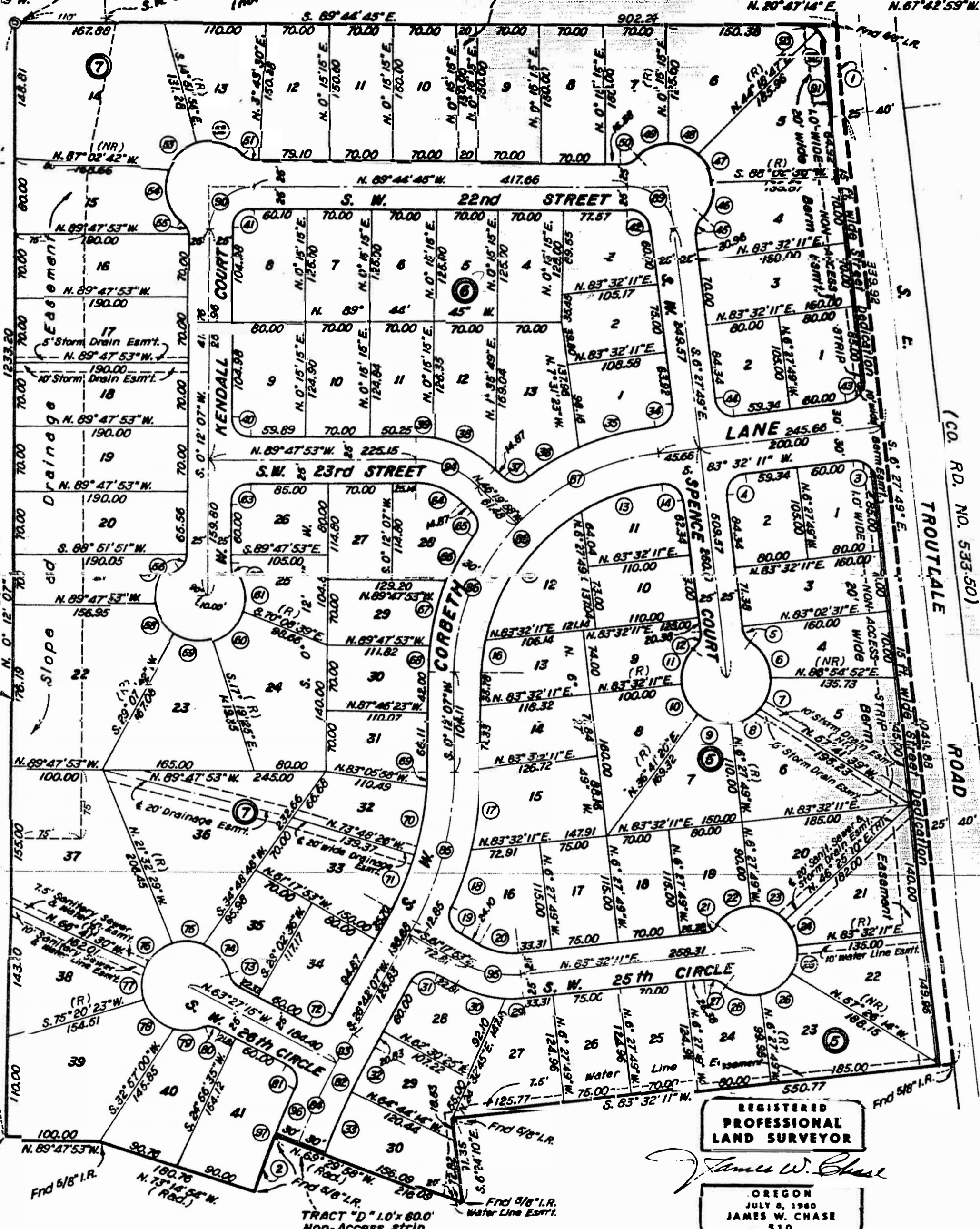
- (45) Δ- 49° 59' 40" R- 20.00 T- 23.31 L- 17.45 Ch- 16.90 N. 18° 32' 02" E.
- (46) Δ- 45° 29' 16" R- 50.00 T- 20.88 L- 39.70 Ch- 38.66 N. 20° 47' 14" E.
- (47) Δ- 43° 43' 49" R- 50.00 T- 20.07 L- 38.16 Ch- 37.24 N. 23° 49' 18" W.
- (48) Δ- 44° 03' 32" R- 50.00 T- 20.23 L- 38.45 Ch- 37.51 N. 67° 42' 59" W.

- NOTE -

See Sheet 2 for additional curve data and additional notes.

TRACT "C" To be Dedicated to the City of Troutdale

INITIAL POINT
 FND BRASS CAP MONUMENT
 N. W. COR. Benjamin Hall D.L.C.
 S.W. COR. J DOUGLAS D.L.C. (not found)



REGISTERED
 PROFESSIONAL
 LAND SURVEYOR

James W. Chase

OREGON
 JULY 8, 1980
 JAMES W. CHASE
 510

TRACT "D" 1.0' x 60.0'
 Non-Access strip