

RESOLUTION NO. 522-R

A RESOLUTION ACCEPTING DEDICATED STREETS AND PARK, AND PUBLIC IMPROVEMENTS FOR USE BY THE PUBLIC.

WHEREAS, the streets and park below named, which are recorded on the final plat of "Kiku Heights" and located within the City of Troutdale, have been dedicated to the City of Troutdale, and

WHEREAS, the public improvements, required as a condition of approval, have been constructed to City of Troutdale standards, and

WHEREAS, the City Engineer, Community Services Director and Facilities Maintenance Foreman have inspected the streets, public improvements and park below named and are recommending City acceptance of the below named improvements:

NOW, THEREFORE BE IT RESOLVED BY THE COMMON COUNCIL OF THE CITY OF TROUTDALE, THAT:

The City does hereby accept the following streets and park as dedicated streets and park and the public improvements below named to be operated and maintained by the City of Troutdale, for use by the general public from this date forward.

NAME OF RECORDED STREETS:

1. S.E. 18th Place
2. S.E. 18th Street
3. S.E. 19th Place
4. S.E. 19th Street
5. S.E. Sandy Court
6. S.E. BeaverCreek Lane

NAME OF DEDICATED PARK:

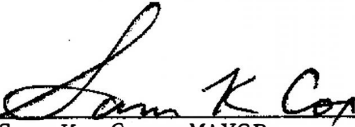
1. Kiku Park

NAME OF PUBLIC IMPROVEMENTS:

1. Water Lines
2. Storm Sewers
3. Sanitary Sewer Lines

PASSED BY THE COMMON COUNCIL OF THE CITY OF TROUTDALE THIS 13th DAY OF
December, 1983.

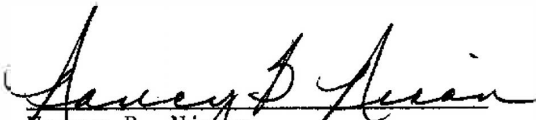
YEAS 6
NAYS 0



Sam K. Cox, MAYOR

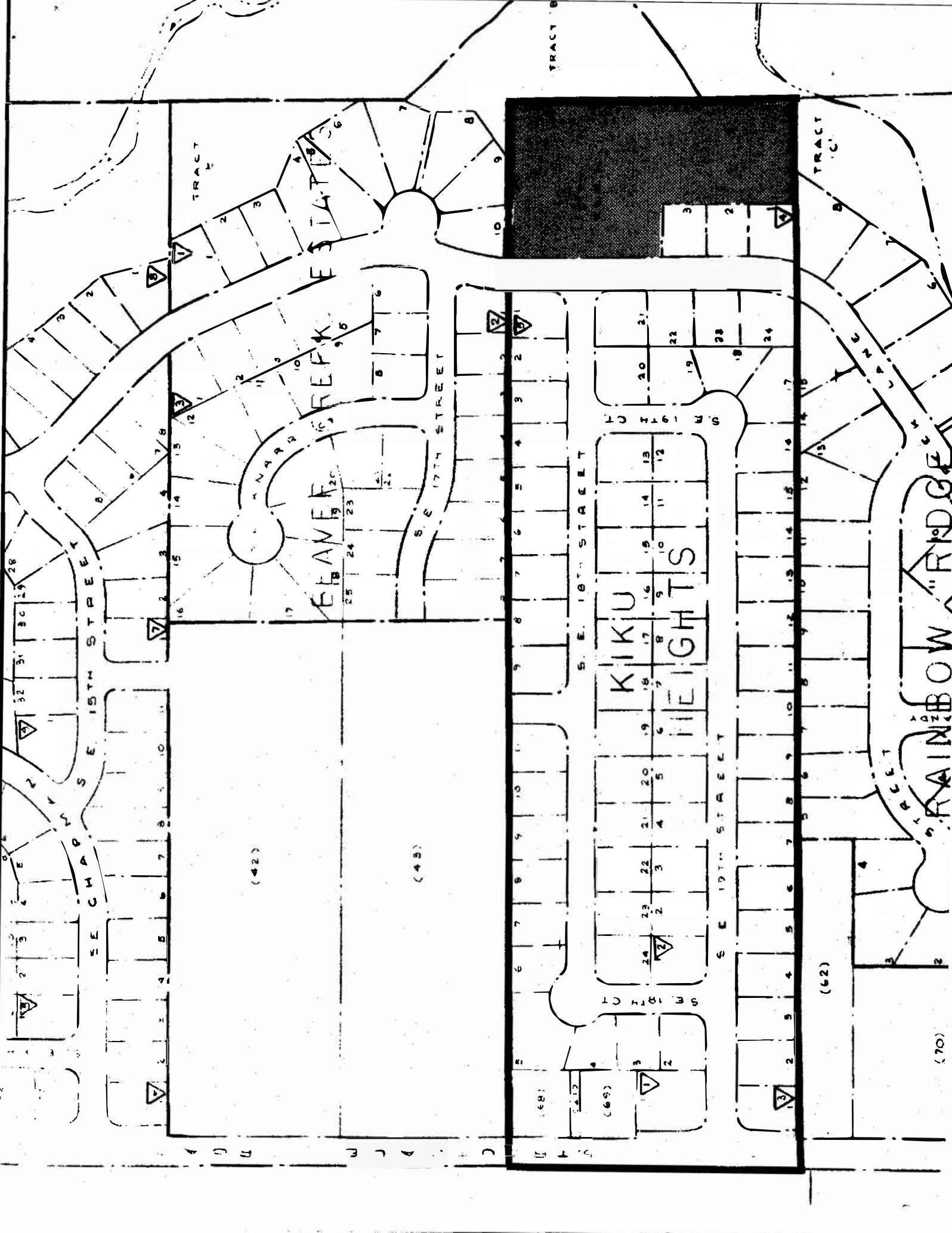
Date Signed: 12-14-83

ATTEST:



Nancy B. Nixon
FINANCE DIRECTOR/CITY RECORDER

* Map attached to resolution



TRACT B

TRACT C

TRACT 2

SE 15TH STREET

SE 17TH STREET

SE 18TH STREET

SE 19TH STREET

BEAVER CREEK

KIKU HEIGHTS

RAINBOW RIDGE

(42)

(43)

(62)

(70)

(68)

(69)

SE 15TH STREET

SE 15TH STREET

SE 15TH STREET

SE 15TH STREET

SE 15TH STREET

SE 15TH STREET

SE 15TH STREET

SE 15TH STREET

SE 15TH STREET

SE 15TH STREET

SE 15TH STREET

SE 15TH STREET

SE 15TH STREET

SE 15TH STREET

SE 15TH STREET

SE 15TH STREET

SE 15TH STREET

SE 15TH STREET