

RESOLUTION NO. 494-R

A RESOLUTION ACCEPTING THE DEDICATION OF THE RIGHT-OF-WAY FOR THE HALSEY LOOP STREET, ACCEPTING WATER, STORM SEWER AND STREET IMPROVEMENTS WITHIN HALSEY LOOP STREET RIGHT-OF-WAY, ACCEPTING ON-SITE WATER IMPROVEMENTS, AND ACCEPTING AN OFF-SITE WATER LINE ALONG HALSEY STREET FOR PUBLIC USE.

WHEREAS, Halsey Station Limited has constructed a condominium project within the City of Troutdale, Oregon known as "Halsey Station Phase I", and

WHEREAS, the street below named, which is recorded on the final plat of Halsey Station Phase I and located within the City of Troutdale, has been dedicated to the City of Troutdale by Halsey Station Limited, and

WHEREAS, the City Engineer and Public Works Director have inspected and are recommending City acceptance of the below named improvements, and

WHEREAS, a bond or equivalent security has been issued in favor of the City guaranteeing the quality of construction of said street and improvements for a period of one year, and

WHEREAS, Halsey Station Limited has submitted a bond which will guarantee the placement of a one-inch (1") overlay on the below named street as required by the City of Troutdale;

NOW, THEREFORE BE IT RESOLVED BY THE COMMON COUNCIL OF THE CITY OF TROUTDALE, THAT:

The City does hereby accept the following street and improvements as a dedicated street and improvements, to be operated and maintained by the City of Troutdale, for use by the general public from this date forward.

Name of Recorded Street:

1. Halsey Loop Street (designated as per Exhibit "A")

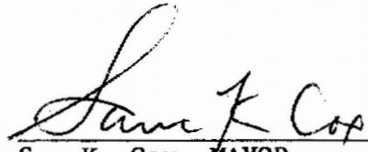
Name of Public Improvements:

1. Water and storm sewer lines situated within the Halsey Loop Street right-of-way (designated as per Exhibit "B")
2. The on-site twelve-inch (12") A.W.W.A. C900 D.R. 18-C.L. 150 water line (designated as per Exhibit "B")
3. The off-site twelve inch A.W.W.A. C900, D.R. 18-Class 150 situated within the N.E. Halsey Street right-of-way (designated as per Exhibit "B")

PASSED BY THE COMMON COUNCIL OF THE CITY OF TROUTDALE THIS 12th DAY
OF April, 1983.

YEAS 6

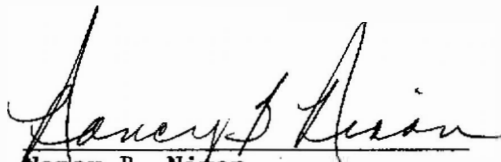
NAYS 0



Sam K. Cox, MAYOR

Date Signed: April 13, 1983

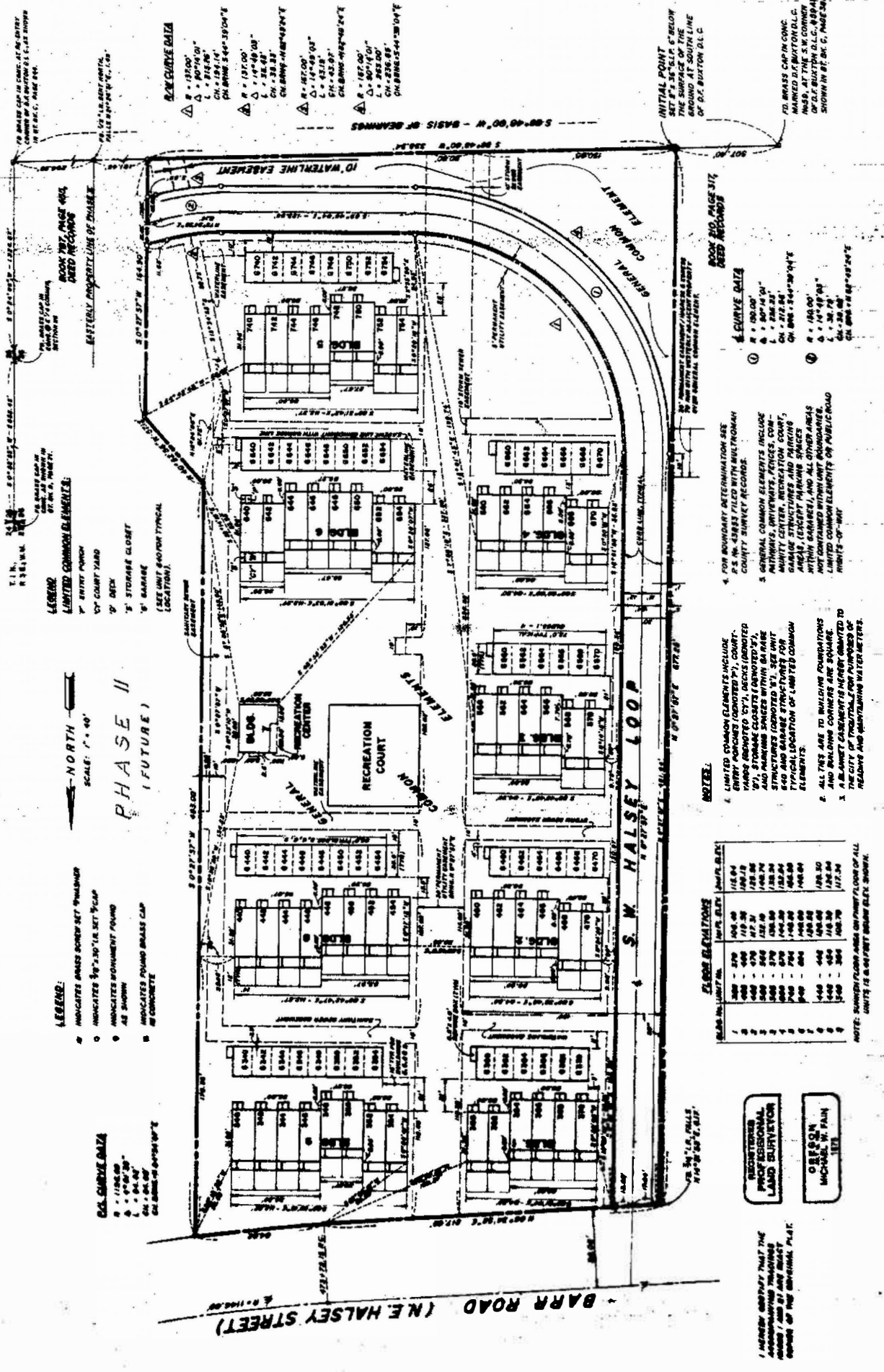
ATTEST:



Nancy B. Nixon
FINANCE DIRECTOR/CITY RECORDER

HALSEY STATION, A CONDOMINIUM (PHASE I)

IN THE S.E. 1/4 OF SECTION 26, T.1N., R.3E., W.M., MULTNOMAH COUNTY, OREGON
(IN D.E. DUXTON D.L.C. No. 59)



LEGEND:

- INDICATES BRASS SPOKE SET FOUNDATION
- INDICATES MONUMENT FOUND
- AS SHOWN
- INDICATES FOUND BRASS CAP
- CONCRETE

LEGEND:

- LIMITED COMMON ELEMENTS
- 3' DRIVE PAVING
- 3' DRIVE YARD
- 3' STORAGE CLOSET
- 3' GARAGE
- (SEE UNIT RATION TYPICAL LOCATION)

LEGEND:

- LIMITED COMMON ELEMENTS
- 3' DRIVE PAVING
- 3' DRIVE YARD
- 3' STORAGE CLOSET
- 3' GARAGE
- (SEE UNIT RATION TYPICAL LOCATION)

RAW CURVE DATA

- △ R = 137.00'
Δ = 80°14'00"
CH = 154.14'
CH BEARING = 44°39'04"E
- △ R = 137.00'
Δ = 14°45'00"
CH = 33.33'
CH BEARING = 118°48'24"E
- △ R = 137.00'
Δ = 80°14'00"
CH = 154.14'
CH BEARING = 44°39'04"E
- △ R = 137.00'
Δ = 14°45'00"
CH = 33.33'
CH BEARING = 118°48'24"E

RAW CURVE DATA

- △ R = 137.00'
Δ = 80°14'00"
CH = 154.14'
CH BEARING = 44°39'04"E
- △ R = 137.00'
Δ = 14°45'00"
CH = 33.33'
CH BEARING = 118°48'24"E
- △ R = 137.00'
Δ = 80°14'00"
CH = 154.14'
CH BEARING = 44°39'04"E
- △ R = 137.00'
Δ = 14°45'00"
CH = 33.33'
CH BEARING = 118°48'24"E

RAW CURVE DATA

- △ R = 137.00'
Δ = 80°14'00"
CH = 154.14'
CH BEARING = 44°39'04"E
- △ R = 137.00'
Δ = 14°45'00"
CH = 33.33'
CH BEARING = 118°48'24"E
- △ R = 137.00'
Δ = 80°14'00"
CH = 154.14'
CH BEARING = 44°39'04"E
- △ R = 137.00'
Δ = 14°45'00"
CH = 33.33'
CH BEARING = 118°48'24"E

RAW CURVE DATA

- △ R = 137.00'
Δ = 80°14'00"
CH = 154.14'
CH BEARING = 44°39'04"E
- △ R = 137.00'
Δ = 14°45'00"
CH = 33.33'
CH BEARING = 118°48'24"E
- △ R = 137.00'
Δ = 80°14'00"
CH = 154.14'
CH BEARING = 44°39'04"E
- △ R = 137.00'
Δ = 14°45'00"
CH = 33.33'
CH BEARING = 118°48'24"E

RAW CURVE DATA

- △ R = 137.00'
Δ = 80°14'00"
CH = 154.14'
CH BEARING = 44°39'04"E
- △ R = 137.00'
Δ = 14°45'00"
CH = 33.33'
CH BEARING = 118°48'24"E
- △ R = 137.00'
Δ = 80°14'00"
CH = 154.14'
CH BEARING = 44°39'04"E
- △ R = 137.00'
Δ = 14°45'00"
CH = 33.33'
CH BEARING = 118°48'24"E

RAW CURVE DATA

- △ R = 137.00'
Δ = 80°14'00"
CH = 154.14'
CH BEARING = 44°39'04"E
- △ R = 137.00'
Δ = 14°45'00"
CH = 33.33'
CH BEARING = 118°48'24"E
- △ R = 137.00'
Δ = 80°14'00"
CH = 154.14'
CH BEARING = 44°39'04"E
- △ R = 137.00'
Δ = 14°45'00"
CH = 33.33'
CH BEARING = 118°48'24"E

FLOOR ELEVATIONS

UNIT NO.	1st FL. ELEV.	2nd FL. ELEV.
101	104.00	115.04
102	104.00	115.04
103	104.00	115.04
104	104.00	115.04
105	104.00	115.04
106	104.00	115.04
107	104.00	115.04
108	104.00	115.04
109	104.00	115.04
110	104.00	115.04
111	104.00	115.04
112	104.00	115.04
113	104.00	115.04
114	104.00	115.04
115	104.00	115.04
116	104.00	115.04
117	104.00	115.04
118	104.00	115.04
119	104.00	115.04
120	104.00	115.04
121	104.00	115.04
122	104.00	115.04
123	104.00	115.04
124	104.00	115.04
125	104.00	115.04
126	104.00	115.04
127	104.00	115.04
128	104.00	115.04
129	104.00	115.04
130	104.00	115.04
131	104.00	115.04
132	104.00	115.04
133	104.00	115.04
134	104.00	115.04
135	104.00	115.04
136	104.00	115.04
137	104.00	115.04
138	104.00	115.04
139	104.00	115.04
140	104.00	115.04
141	104.00	115.04
142	104.00	115.04
143	104.00	115.04
144	104.00	115.04
145	104.00	115.04
146	104.00	115.04
147	104.00	115.04
148	104.00	115.04
149	104.00	115.04
150	104.00	115.04
151	104.00	115.04
152	104.00	115.04
153	104.00	115.04
154	104.00	115.04
155	104.00	115.04
156	104.00	115.04
157	104.00	115.04
158	104.00	115.04
159	104.00	115.04
160	104.00	115.04
161	104.00	115.04
162	104.00	115.04
163	104.00	115.04
164	104.00	115.04
165	104.00	115.04
166	104.00	115.04
167	104.00	115.04
168	104.00	115.04
169	104.00	115.04
170	104.00	115.04
171	104.00	115.04
172	104.00	115.04
173	104.00	115.04
174	104.00	115.04
175	104.00	115.04
176	104.00	115.04
177	104.00	115.04
178	104.00	115.04
179	104.00	115.04
180	104.00	115.04
181	104.00	115.04
182	104.00	115.04
183	104.00	115.04
184	104.00	115.04
185	104.00	115.04
186	104.00	115.04
187	104.00	115.04
188	104.00	115.04
189	104.00	115.04
190	104.00	115.04
191	104.00	115.04
192	104.00	115.04
193	104.00	115.04
194	104.00	115.04
195	104.00	115.04
196	104.00	115.04
197	104.00	115.04
198	104.00	115.04
199	104.00	115.04
200	104.00	115.04

NOTE: FINISH FLOOR AREA ON FINISH FLOOR OF ALL UNITS IS 8,000 SQ. FT. BRASS ELEV. SHOWN.

NOTES:

1. LIMITED COMMON ELEMENTS INCLUDE:
 - a. DRIVEWAYS
 - b. DRIVEWAYS
 - c. DRIVEWAYS
 - d. DRIVEWAYS
 - e. DRIVEWAYS
 - f. DRIVEWAYS
 - g. DRIVEWAYS
 - h. DRIVEWAYS
 - i. DRIVEWAYS
 - j. DRIVEWAYS
 - k. DRIVEWAYS
 - l. DRIVEWAYS
 - m. DRIVEWAYS
 - n. DRIVEWAYS
 - o. DRIVEWAYS
 - p. DRIVEWAYS
 - q. DRIVEWAYS
 - r. DRIVEWAYS
 - s. DRIVEWAYS
 - t. DRIVEWAYS
 - u. DRIVEWAYS
 - v. DRIVEWAYS
 - w. DRIVEWAYS
 - x. DRIVEWAYS
 - y. DRIVEWAYS
 - z. DRIVEWAYS
2. ALL TREES ARE TO REMAIN UNLESS OTHERWISE SHOWN.
3. A BRASS CAP IS TO BE SET AT THE CENTER OF EACH UNIT.
4. FOR BOUNDARY DETERMINATION SEE:
 - a. COUNTY SURVEY RECORDS
 - b. COUNTY SURVEY RECORDS
 - c. COUNTY SURVEY RECORDS
 - d. COUNTY SURVEY RECORDS
 - e. COUNTY SURVEY RECORDS
 - f. COUNTY SURVEY RECORDS
 - g. COUNTY SURVEY RECORDS
 - h. COUNTY SURVEY RECORDS
 - i. COUNTY SURVEY RECORDS
 - j. COUNTY SURVEY RECORDS
 - k. COUNTY SURVEY RECORDS
 - l. COUNTY SURVEY RECORDS
 - m. COUNTY SURVEY RECORDS
 - n. COUNTY SURVEY RECORDS
 - o. COUNTY SURVEY RECORDS
 - p. COUNTY SURVEY RECORDS
 - q. COUNTY SURVEY RECORDS
 - r. COUNTY SURVEY RECORDS
 - s. COUNTY SURVEY RECORDS
 - t. COUNTY SURVEY RECORDS
 - u. COUNTY SURVEY RECORDS
 - v. COUNTY SURVEY RECORDS
 - w. COUNTY SURVEY RECORDS
 - x. COUNTY SURVEY RECORDS
 - y. COUNTY SURVEY RECORDS
 - z. COUNTY SURVEY RECORDS

REGISTERED
PROFESSIONAL
LAND SURVEYOR

OREGON
MICHAEL W. FAHN
1978

I HEREBY CERTIFY THAT THE
CONDOMINIUM PLAN AND
ASSOCIATED RECORDS
ARE CORRECT AND
TRUE TO THE ORIGINAL PLAN.

INITIAL POINT
SET 7' 36" S.P. 6' BELOW
THE SURFACE OF THE
GROUND AT SOUTH LINE
OF D.E. DUXTON D.L.C.

BOOK NO. PAGE NO.
DEED RECORDS

RAW CURVE DATA

- △ R = 137.00'
Δ = 80°14'00"
CH = 154.14'
CH BEARING = 44°39'04"E
- △ R = 137.00'
Δ = 14°45'00"
CH = 33.33'
CH BEARING = 118°48'24"E
- △ R = 137.00'
Δ = 80°14'00"
CH = 154.14'
CH BEARING = 44°39'04"E
- △ R = 137.00'
Δ = 14°45'00"
CH = 33.33'
CH BEARING = 118°48'24"E

RAW CURVE DATA

- △ R = 137.00'
Δ = 80°14'00"
CH = 154.14'
CH BEARING = 44°39'04"E
- △ R = 137.00'
Δ = 14°45'00"
CH = 33.33'
CH BEARING = 118°48'24"E
- △ R = 137.00'
Δ = 80°14'00"
CH = 154.14'
CH BEARING = 44°39'04"E
- △ R = 137.00'
Δ = 14°45'00"
CH = 33.33'
CH BEARING = 118°48'24"E

RAW CURVE DATA

- △ R = 137.00'
Δ = 80°14'00"
CH = 154.14'
CH BEARING = 44°39'04"E
- △ R = 137.00'
Δ = 14°45'00"
CH = 33.33'
CH BEARING = 118°48'24"E
- △ R = 137.00'
Δ = 80°14'00"
CH = 154.14'
CH BEARING = 44°39'04"E
- △ R = 137.00'
Δ = 14°45'00"
CH = 33.33'
CH BEARING = 118°48'24"E

RAW CURVE DATA

- △ R = 137.00'
Δ = 80°14'00"
CH = 154.14'
CH BEARING = 44°39'04"E
- △ R = 137.00'
Δ = 14°45'00"
CH = 33.33'
CH BEARING = 118°48'24"E
- △ R = 137.00'
Δ = 80°14'00"
CH = 154.14'
CH BEARING = 44°39'04"E
- △ R = 137.00'
Δ = 14°45'00"
CH = 33.33'
CH BEARING = 118°48'24"E

RAW CURVE DATA

- △ R = 137.00'
Δ = 80°14'00"
CH = 154.14'
CH BEARING = 44°39'04"E
- △ R = 137.00'
Δ = 14°45'00"
CH = 33.33'
CH BEARING = 118°48'24"E
- △ R = 137.00'
Δ = 80°14'00"
CH = 154.14'
CH BEARING = 44°39'04"E
- △ R = 137.00'
Δ = 14°45'00"
CH = 33.33'
CH BEARING = 118°48'24"E

RAW CURVE DATA

- △ R = 137.00'
Δ = 80°14'00"
CH = 154.14'
CH BEARING = 44°39'04"E
- △ R = 137.00'
Δ = 14°45'00"
CH = 33.33'
CH BEARING = 118°48'24"E
- △ R = 137.00'
Δ = 80°14'00"
CH = 154.14'
CH BEARING = 44°39'04"E
- △ R = 137.00'
Δ = 14°45'00"
CH = 33.33'
CH BEARING = 118°48'24"E

RAW CURVE DATA

- △ R = 137.00'
Δ = 80°14'00"
CH = 154.14'
CH BEARING = 44°39'04"E
- △ R = 137.00'
Δ = 14°45'00"
CH = 33.33'
CH BEARING = 118°48'24"E
- △ R = 137.00'
Δ = 80°14'00"
CH = 154.14'
CH BEARING = 44°39'04"E
- △ R = 137.00'
Δ = 14°45'00"
CH = 33.33'
CH BEARING = 118°48'24"E

RAW CURVE DATA

- △ R = 137.00'
Δ = 80°14'00"
CH = 154.14'
CH BEARING = 44°39'04"E
- △ R = 137.00'
Δ = 14°45'00"
CH = 33.33'
CH BEARING = 118°48'24"E
- △ R = 137.00'
Δ = 80°14'00"
CH = 154.14'
CH BEARING = 44°39'04"E
- △ R = 137.00'
Δ = 14°45'00"
CH = 33.33'
CH BEARING = 118°48'24"E