

RESOLUTION No. 376-R

A Resolution Initiating the vacation of Sandy Street between S.E. 8th Street and Cherry Park Road/Troutdale Road.

WHEREAS, A preliminary plat for a subdivision named "Troutdale Heights" has been approved by the Planning Commission; and

WHEREAS, Such plat map calls for the re-alignment of Buxton and Troutdale Road, and the closing off of Sandy Street between Troutdale Road and 8th Street; and

WHEREAS, Such action requires that the City of Troutdale vacate any public interest it has in Sandy Street between 8th Street and Troutdale Road before the final plat can be recorded; and

WHEREAS, The vacation of said street is consistent with previous City Council directions and decisions relating to the development of Tax Lot 14, Section 25, T1N, R3E, W.M., or "Troutdale Heights" subdivision; and

WHEREAS, The street vacation process requires that the City Council initiate the vacation, and hold hearings on said matter after proper public notice has been given; now

NOW, THEREFORE BE IT RESOLVED BY THE COMMON COUNCIL OF THE CITY OF TROUTDALE THAT the City does hereby initiate the vacation of Sandy Street from 8th Street to Troutdale Road, and calls for a public hearing on said proposed vacation.

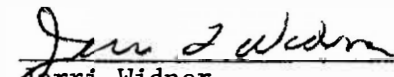
PASSED THIS 2ND DAY OF SEPTEMBER, 1980.

YEAS 5

NAYS 0

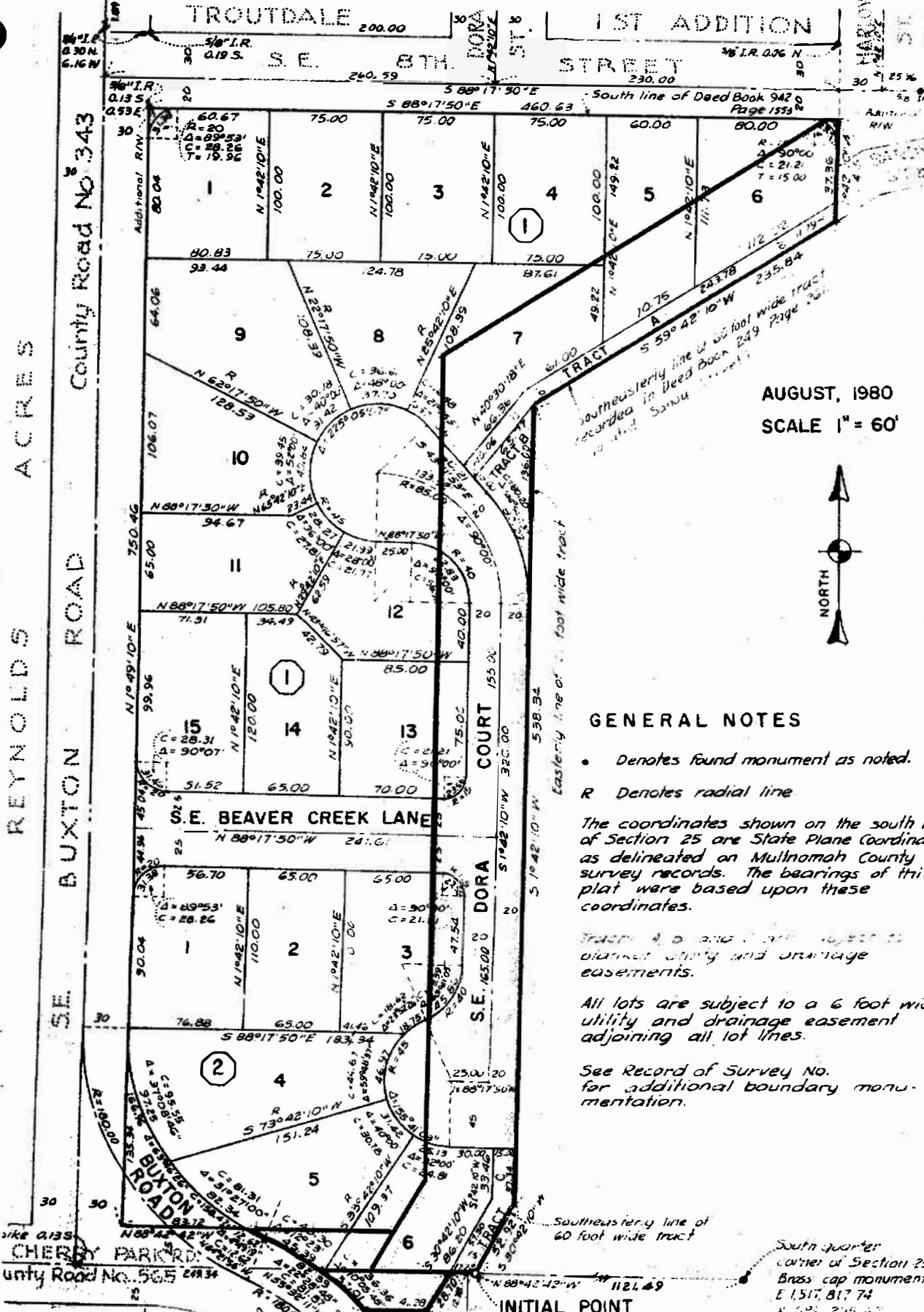
  
\_\_\_\_\_  
R.M. Sturges, Mayor

ATTEST:

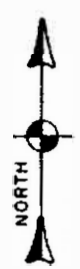
  
\_\_\_\_\_  
Jerri Widner  
Finance Director/City Recorder

# TROUTDALE HEIGHTS

IN THE S.W. 1/4 OF SECTION 25 AND THE NORTHWEST 1/4 OF SECTION 36  
TOWNSHIP 1 NORTH, RANGE 3 EAST, MULTNOMAH COUNTY, OREGON



AUGUST, 1980  
SCALE 1" = 60'



### GENERAL NOTES

- Denotes found monument as noted.
- R Denotes radial line.

The coordinates shown on the south line of Section 25 are State Plane Coordinates as delineated on Multnomah County survey records. The bearings of this plat were based upon these coordinates.

Tracts A, B and C are subject to blanket utility and drainage easements.

All lots are subject to a 6 foot wide utility and drainage easement adjoining all lot lines.

See Record of Survey No. for additional boundary monumentation.

South quarter corner of Section 25  
Brass cap monument  
E 1517.817 74  
N 696 249.27

INITIAL POINT

AUTUMN PARK