

RESOLUTION No. 362 -R

A RESOLUTION ACCEPTING DEDICATED STREETS AND PARKS FOR USE BY THE PUBLIC

WHEREAS, the streets and parks below named, which are recorded on the final plat of "Weedin Addition" and located within the City of Troutdale, have been dedicated to the City of Troutdale by George F. Brice, III, and

WHEREAS, the City Engineer, Public Works Director, Parks Foreman and Planning Director have inspected the streets and parks below named and are recommending that they be accepted by the City, and

WHEREAS, a bond or equivalent security has been issued in favor of the City guaranteeing the quality of construction of said streets and parks for a period of one year;

NOW, THEREFORE BE IT RESOLVED BY THE COMMON COUNCIL OF THE CITY OF TROUTDALE that the City does hereby accept the following streets and parks as dedicated streets and parks to be operated and maintained by the City, and for use by the general public from this date forward.

NAME OF RECORDED STREETS:

1. S.E. Harlow Street
2. S.E. 14th Street
3. S.E. Chapman Street
4. S.E. 12th Street
5. S.E. 15th Street
6. S.E. Sandy Street
7. S.E. Beaver creek Lane

NAME OF RECORDED PARKS:

1. Tract D (Weedin Park)
2. Tract E (Beaver creek Canyon)

PASSED BY THE COMMON COUNCIL OF THE CITY OF TROUTDALE THIS 12TH DAY OF AUGUST, 1980.

YEAS: 6

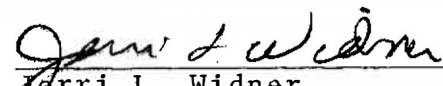
NAYS: 0



R. M. Sturges, Mayor

ATTEST:

Date Signed 9/4/80

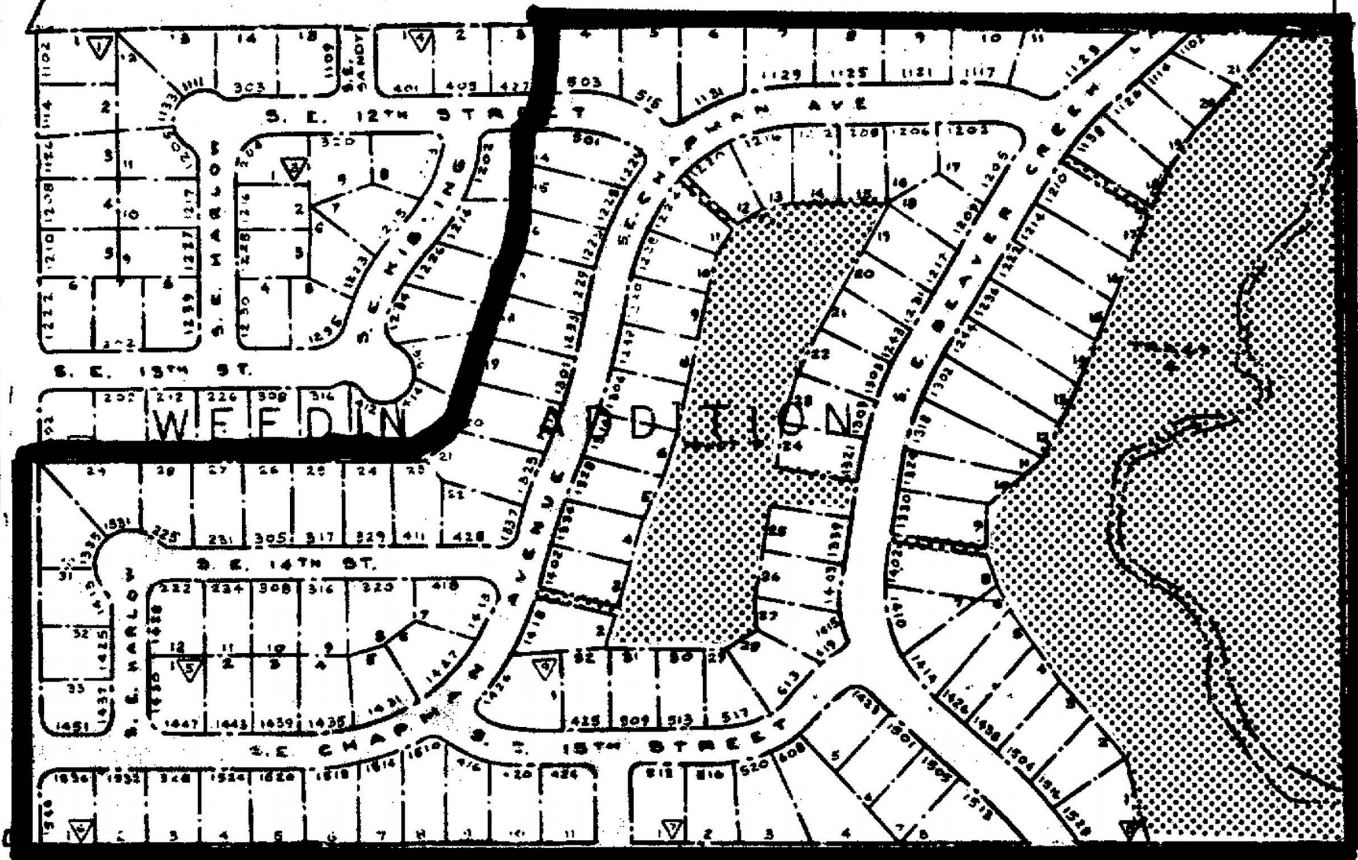
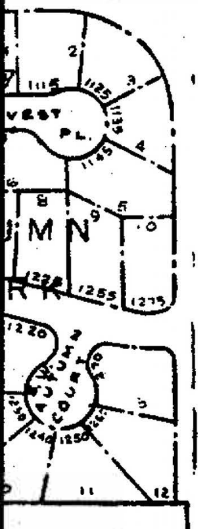


Terri L. Widner,
Finance Director/City Recorder

Map attached to resolution.

(14)

(71)



(42)

430



TRACT 8